

Local Authority Climate Action Plan 2024 -2029

Progress Report 2025

Table of Contents

Executive Summary	5
Improving Energy Performance	5
Building Internal Leadership	5
Empowering Communities.....	5
Looking Ahead.....	6
Introduction	7
Climate Action Unit	8
Overview of Limerick’s LACAP.....	8
Monitoring, Reporting & Evaluation	9
Climate Action National Key Performance Indicators (KPIs)	9
Status of Actions within the LACAP (2025)	10
Overall Performance	11
Total CO ₂ Emissions	11
Fossil CO ₂ Target.....	12
Energy Efficiency Target.....	12
Thematic Updates	13
Travel & Mobility	13
Council Operations.....	13
Fleet Transition	14
Sustainable Road Infrastructure	14
Spotlight - Limerick’s Public EV Charging Network	15
Active Travel.....	16
Active Travel Schemes & Data	16
Limerick Shannon Metropolitan Area Walking & Cycling Index	16
Spotlight - 3 Kilometres of New & Improved Footpaths	17
Built Environment & Energy	17
Council Operations.....	18
Pathfinder	18
Public Lighting Energy Efficiency Project (PLEEP)	18

Social Housing Retrofitting.....	19
Regeneration Thermal Upgrade Programme.....	19
Flood Resilience - Implementation of the CFRAM Flood Risk Management Plans	20
Governance & Leadership	20
Embedding Climate Action.....	20
Staff & Climate Action.....	21
Staff Climate Action Training	21
Climate Awareness Survey	22
Spotlight - Climate Champions Programme	23
Junior Achievers Ireland.....	24
Spotlight - Climate Action Week	25
Spotlight - The Fireplace Site	25
Community & Partnership	26
Community Climate Action Programme	27
Spotlight - Doon Social Farm (Ballyhoura Rural Services)	27
Spotlight – St. Mary’s RFC	28
Spotlight - Thomondgate Biodiversity Trail	28
Síolta Glasa	29
Citizen Innovation Lab	29
Natural Environment	29
Nature Based Solutions.....	30
Biodiversity Plan.....	31
Spotlight - Harvesting & Growing Local Oak Trees	31
Air & noise monitoring: Real-time insights for a healthier Limerick.....	31
Spotlight - People’s Park: A living soundscape	32
Environment & Circular Economy	32
Return & Employ.....	33
Limerick Greenway Award	33
Spotlight - Riverfest Sustainability	34
Priorities for 2026	34

DRAFT

Executive Summary

Limerick City and County Council made significant progress in 2025 in implementing its Local Authority Climate Action Plan 2024–2029 (LACAP), toward meeting national climate and decarbonisation targets. The year marked a decisive shift from planning to delivery across emissions reduction, organisational leadership, and community-led climate action.

Improving Energy Performance

Limerick City and County Council is ahead of schedule on its emissions reduction pathway towards a 71.5% cut by 2030. Energy efficiency reached 58.2% in 2025 compared to 2009 levels, putting the Council in a strong position to surpass the 2030 target of 50%.

Emissions from transport and heating continue to be the greatest challenge in meeting targets. 2025 saw the introduction of Hydrotreated Vegetable Oil (HVO) at the Park Road Depot which delivered carbon savings of approximately 110 tonnes in six months. In addition, the Council entered the Sustainable Energy Authority Ireland's (SEAI) [Pathfinder Programme](#). With the formation of the Mid-West Energy Unit this programme will provide 50% match funding for the retrofitting of Limerick City and County Council's corporate buildings. In advance of this work investment grade audits were completed for our 3 main corporate buildings, establishing a prioritised and costed retrofit pipeline through to 2030.

Building Internal Leadership

In 2025, the Council established its first staff Climate Champions Programme that aims to strengthen internal leadership and embed climate action within and across the organisation. The Climate Champions Programme facilitates climate related initiatives/projects, fieldtrips, and practical learning such as borrowing Council owned Home Energy Kits, which helps to break down organisational silos.

In 2025, over 165 completed climate training with 132 staff completing additional training, for example, green procurement, Nearly Zero Energy Buildings (NZEB) Awareness Days and eco driving techniques for truck drivers. Combined, this demonstrates the organisation's readiness to deliver more complex decarbonisation projects in the later years of the LACAP.

Empowering Communities

Community-led action continued to be a cornerstone of Limerick's climate response. Through Phase 1 of the [Community Climate Action Programme](#), 19 community projects were supported under the "Building Low Carbon Communities" strand, delivering fully funded, locally tailored initiatives across energy, biodiversity, sustainable food systems, and circular economy practices. These projects demonstrated how climate action can deliver multiple benefits by reducing emissions, enhancing biodiversity, improving wellbeing, and strengthening social cohesion.

Looking Ahead

Overall, 2025 can be characterised as a pivotal year for climate action in Limerick. Measurable emissions reductions, strong organisational engagement through the Climate Champions Programme, and impactful community-led initiatives have created a solid foundation for accelerated delivery. With delivery structures, partnerships, and project pipelines now firmly in place, the Council is well positioned to accelerate retrofit delivery, fleet decarbonisation, and area-based solutions through initiatives such as the Pathfinder and Community Climate Action Programmes supporting sustained progress towards a low-carbon, climate resilient Limerick to 2029.

DRAFT

Introduction

The Limerick City and County Council Local Authority Climate Action Plan 2024 - 2029 (LACAP) was adopted on the 12th of March 2024. The LACAP sets out how the council will reduce its energy use and increase its overall energy efficiency across its own operations and facilities. It also sets out how the council through its actions can facilitate and advocate for climate action across other sectors as well as influencing and supporting communities to take positive climate actions.



The LACAP sets out 98 actions across several areas both internally and externally with the overall aim of achieving a carbon neutral society by 2050. The primary focus of the LACP is on reducing its own emissions by 51% by 2030 as a key first step on this journey. Limerick City and County Council require transformative action, but the environmental, social, and economic benefits will motivate communities and business to meet their own targets.

The LACAP outlines the key areas where Limerick City and County Council seek to deliver climate action. To deliver across these areas Limerick City and County Council focus on both internal structures (organisational) and external (community).

Internal	External
<ul style="list-style-type: none"> • Managing and reducing greenhouse gas emissions while ensuring essential functions and services are delivered • Protecting and enhancing the resilience of the local authority’s human and infrastructural assets against the negative impacts of climate change • Facilitate a systemic climate action culture that celebrates innovation and empowers staff to be internal champions for sustainability 	<ul style="list-style-type: none"> • Influencing sectors, business, communities, and individuals in the delivery of local climate action • Coordinating and working in partnership with other stakeholders to facilitate and enable the delivery of climate action • Advocating for climate action by raising awareness, communicating and engaging on climate related issues and responses • Ensure that the transition to a low carbon society is just and equitable

This is the second annual ‘Progress Report’ of the LACAP’s implementation period from January – December 2025. It is a summary of climate action progress and showcases the wide-ranging delivery of climate action by staff and departmental teams, and across Council services overall.

Climate Action Unit

To achieve the key greenhouse gases target, Limerick City and County Council's Climate Action Unit (CAU) was established in June 2024 with the support of funding from the Department of the Environment, Climate and Communications (DECC).

Overview of Limerick's LACAP

Limerick's LACAP demonstrates how the Council is actively influencing, facilitating and advocating for climate action across other sectors. The Council's responsibilities for climate action are reflected in the plan's 98 actions (excluding decarbonisation zone actions¹). Limerick's proposed Decarbonisation Zone (DZ) is in the city centre, covering much of Newtown Pery. Anchored by the Innovation Playground from the Horizon 2020 +CityxChange project, the DZ applies the Positive Energy Block concept to energy, retrofit, mobility, and innovation. Covering 133 hectares and approximately 7,127 residents, the LACAP identifies a pipeline of low-carbon projects, although further funding will be required to support full delivery.

The LACAP actions are positioned under six themes. This report tracks the progress made within these themes and gives a clear overview of the current position.

The Council's LACAP six themes are:

1. Travel and Mobility (21 actions)
2. Built environment & Energy (18 actions)
3. Governance & Leadership (17 actions)
4. Community & Partnership (14 actions)
5. Natural Environment (17 actions)
6. Environment & Circular Economy (11 actions)

Figure 1 describes each theme.

¹ Limerick Decarbonising Zone (Section 5 of the LACAP) focuses on Georgian core and proposed Colbert Quarter as the Decarbonising Zone (DZ) including the vision for the spatial area, strategic priority areas and actions.

Limerick's Climate Action Plan Themes	
Travel & Mobility	Focuses on expanding safe, accessible active travel routes and encouraging walking, cycling, and other low-emission travel choices. Additional approaches include reducing transport-related emissions through fleet electrification and the use of HVO as a cleaner transitional fuel.
Built Environment & Energy	Plays a crucial role in climate action because it significantly reduces emissions by improving energy efficiency, integrating renewable energy systems, and adopting sustainable construction and retrofit practices.
Governance & Leadership	Oversight and the procedural aspects of integrating climate related matters into governance processes, as well as organisational models, staff training, and operational measures.
Community & Partnership	Central to climate action as it empowers local populations to adapt and prepare for environmental changes. The strengthening of social local networks, supporting low-carbon and sustainable futures are integral to community climate action activities.
Natural Environment	The integration of the natural environment into climate related activities is essential to climate action. Strategies can include tree planting, sustainable urban drainage, nature-based solutions and enhancing biodiversity.
Environment & Circular Economy	Sustainability and resource management support climate action by ensuring natural resources are used efficiently and waste is minimised. Approaches include circular economy models, renewable energy adoption and effective waste management.

Figure 1: Limerick's Climate Action Themes

Each of the LACAP's actions are categorised as either 'adaptation' or 'mitigation'. Of the LACAP's 98 actions, 46 are adaptation, and 52 are mitigation.

Climate adaptation means preparing for and adjusting to climate change impacts that are already happening or expected. It focuses on protecting people, places and services from things like flooding, heat and extreme weather.

Climate mitigation means reducing our carbon emissions that causes climate change.

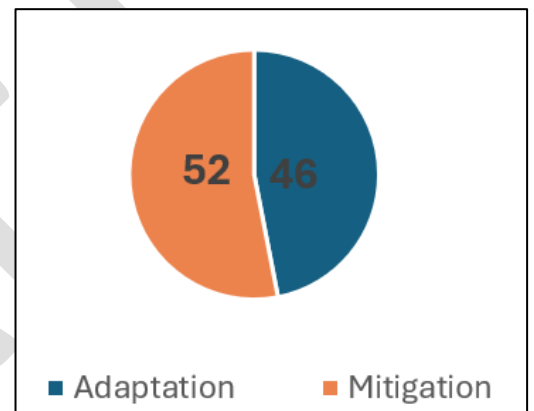


Figure 2: LACAP Adaptation and Mitigation Actions

Monitoring, Reporting & Evaluation

Climate Action National Key Performance Indicators (KPIs)

Key Performance Indicators (KPIs) are essential to track and monitor climate action delivery. They provide measurable and relevant data that can track progress and determine the effectiveness of climate strategies.

In 2020, and for reporting purposes, the Climate Action Regional Offices² (CARO) setup a Climate Action KPI working group to track, measure and report on progress in delivering effective climate action at both local authority and sectoral levels. The KPIs have evolved in number since 2021 and will continue to commensurate with strengthening climate policy and broadly reflect areas of work contained in the Charter, the local government strategy on climate action ([Delivering Effective Climate Action 2030](#) and the [National Climate Action Plan](#)).

In January 2026, all local authorities completed a KPI Climate Action Report for 2025 giving the KPI working group a national picture. This data is then collated in an annual Climate Action Key Performance Indicators (KPIs) report

² [The Climate Action Regional Offices coordinate and support local government climate action](#)

by the Local Government Management Agency (LGMA). Please see Figure 3 for the top ten KPIs for climate action at local government level.

Local Government CA KPI Theme	Climate Action Theme	Data supplied by
1. Climate Action Staff	Mainstreaming	Local Authorities
2. Climate Action Teams	Mainstreaming	Local Authorities
3. Active Travel Projects	Mitigation	NTA
4. Social Housing Retrofit	Mitigation	LGMA (HDCO)
5. Greenhouse Gas Reduction	Mitigation	SEAI
6. Climate Action Plans	Adaptation / Mitigation	Local Authorities
7. Severe Weather Responses	Adaptation	Local Authorities
8. Community Climate Action Programme	Internal Behavioural Change and Capacity Building	DECC
9. Councillor & Staff Training	Internal Behavioural Change and Capacity Building	LASNTG
10. Green for Micro	Internal Behavioural Change and Capacity Building	Enterprise Ireland

Figure 3: Top Ten KPIs

Status of Actions within the LACAP (2025)

Limerick's Climate Action Plan KPIs were collected over the period January 15th - January 31st, 2025, and will be published alongside all LA results in Q2 2026 by the LGMA.

Limerick results for 2025 show 14 actions are complete, 69 actions are ongoing, and 15 are yet to start with 82 'recurring' actions. 'Recurring' actions take into consideration the wider influences on delivery of actions, such as funding, resources, training, and policy/strategic documents across the council. These factors can progress or delay the implementation of climate actions over longer periods of time (beyond the scope of the current LACAP). The recurring actions can also be implemented on more than one occasion during the lifetime of the Limerick's LACAP overall.

Other types of actions remain unchanged, for example, adaptation (11), mitigation (34), and combined (53).


 Actions Summary by Theme					
LACAP Theme	Completed	In Progress	Not Started	Recurring (Yes)	Total Actions
Built Environment & Energy	3	14	1	13	18
Communities & Partnerships	1	11	2	14	14
Environment & Circular Economy	1	8	2	11	11
Governance & Leadership	5	8	4	14	17
Natural Environment	0	16	1	15	17
Travel & Mobility	4	12	5	15	21
Grand Total	14	69	15	82	98

Figure 4: Actions Summary

Overall Performance

Limerick City and County Council is obligated to achieve a 50% improvement in energy efficiency (based on a 2009 baseline) by 2030 and a 71.5% reduction in overall GHG carbon emissions (based on a 2016-2018 baseline) with a specific requirement to achieve a 51% reduction in thermal and transport emissions by 2030 (under the Climate Action Plan 2023 as set out by the Government).

The SEAI Monitoring and Reporting system is the platform for all local authorities to report on their energy and carbon emissions. Limerick City and County Council have an Energy Management System which is accredited to the ISO50001 standard³. This accreditation demonstrates that the information is collected and collated in accordance with best practice and that these processes are independently verified. For the purposes of this 2025 report the most up to date data available relates to Limerick City and County Council’s energy performance for the period 2024 and some preliminary data available for 2025.

Total CO₂ Emissions

Limerick City and County Council are slightly ahead of target to achieve the 71.5% reduction of overall emissions by 2030. Fig 6, below, shows the performance of Limerick City and County Council in reducing its CO₂ emissions across Electricity, Transport and Thermal (heating)

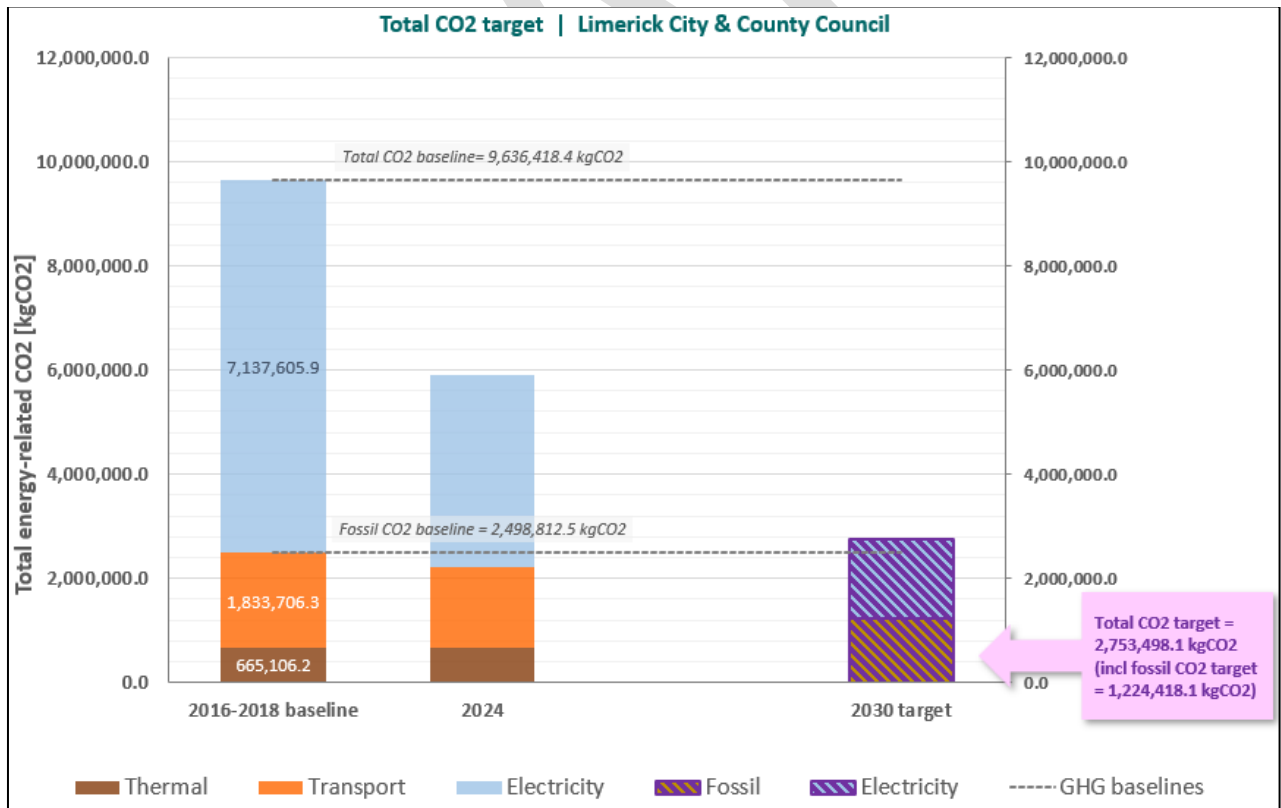


Figure 5: Total CO₂ Target

³ The International Organisation for Standardisation (ISO) is a worldwide federation of national standards bodies. It enables organisations to establish systems and processes to help improve performance. ISO 50001 is the international standard for establishing, implementing, maintaining and improving an energy management system.

This report outlines some of the initiatives being undertaken that will address this issue over the lifetime of Limerick’s LACAP, including the retrofitting of the main corporate buildings through participation in the Pathfinder Programme, the introduction of EVs and the use of HVO to significantly reduce Transport emissions, to meet the 2030 target.

Fossil CO₂ Target

Local Authorities have a specific Fossil Fuel reduction target of 51% by 2030, which is sum of emissions from Transport fuels and Thermal (heating) fuels. Transport fuels account for roughly three quarters of these emissions, with Thermal fuels accounting for a quarter of emissions. Figure 6, below, illustrates that the level of fossil fuel consumption across the Councils operations are behind target, with 11% reduction recorded for 2024. Preliminary data for 2025 shows a relatively unchanged figure of 11.6% reduction from the baseline.

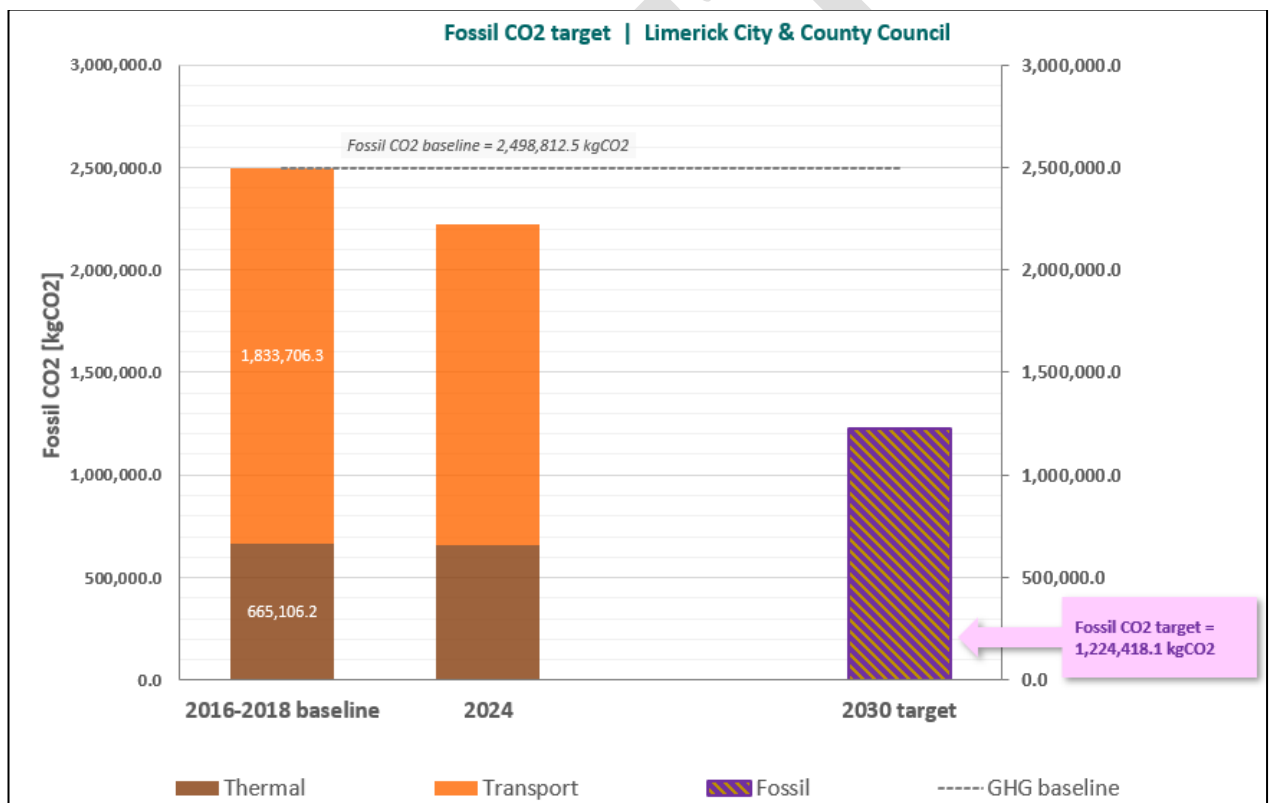


Figure 6: Fossil CO₂ Target

Energy Efficiency Target

Limerick City and County Council is on course to achieving its overall energy efficiency reduction target of 50% by 2030. For 2025 this figure stood at 58.2%, requiring the council to improve by at least another 8.2% over the next few years as shown in LCCC energy performance (figure 7). The retrofitting of the corporate building stock and completion of the PLEEP project are the identified pathways to achieving these targets.

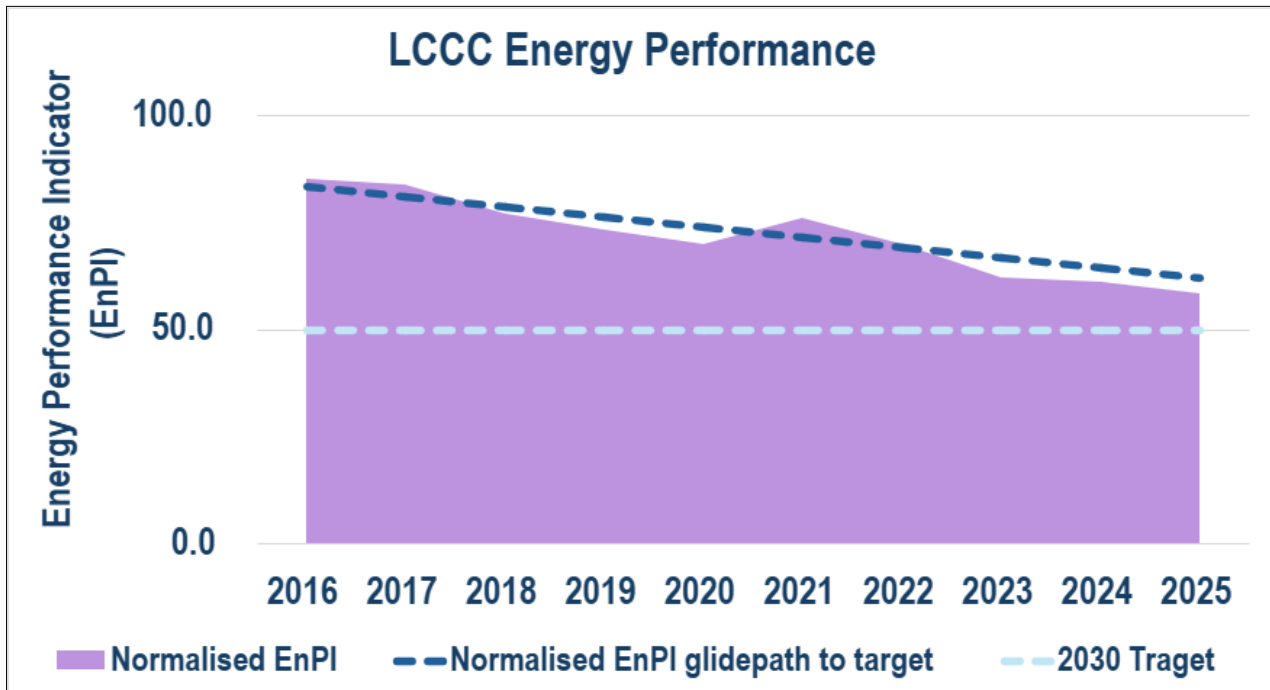


Figure 7: LCCC Energy Performance

Thematic Updates

Travel & Mobility

Council Operations

Travel and transportation are responsible for 11% of carbon emissions in Limerick⁴. Within Limerick City and County Council this figure is 25%. It is therefore essential that if we are to meet the targets set by government this issue is addressed as a matter of urgency. The Avoid Shift Improve framework provides the strategic context for implementation of actions. Key elements of our strategy are:

- Assessment of the existing fleet
- Identifying those vehicles capable of being replaced by electric vehicles
- For those vehicles not capable of being replaced by an EV alternative examine the case for the use of alternative fuels
- Assess depots for vehicle charging infrastructure
- Establish the potential for an EV sharing pool at key locations

⁴ [Limerick's LACAP](#) Fig 3.2, p. 22

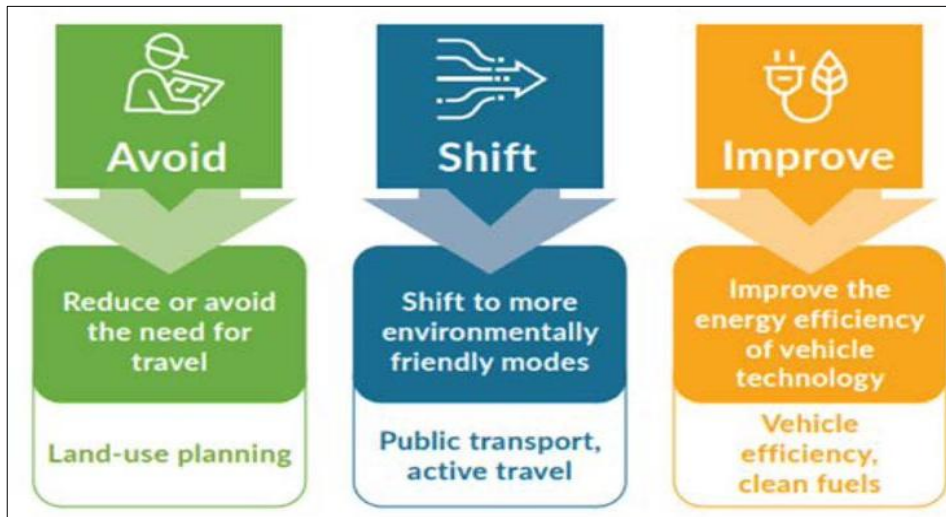


Figure 8: Avoid Shift Improve

Fleet Transition

Actions #T13 T14 T15 T16

Limerick City and County Council's fleet is predominately internal combustion engine (ICE) vehicles, and which accounted for 25% of the Council's total emissions in 2021. Since 2018 emissions from the fleet has increased. Limerick's LACAP set out the steps required to address this by the development of a fleet strategy which also uses the approach of Avoid Shift Improve.

An assessment of the fleet for transition to EVs and installation of charging infrastructure commenced in 2025. A HVO bulk tanker has been installed in the Park Road Depot and has generated CO₂ savings of 110 tonnes in six months of operation in 2025. This initiative will be rolled out in Newcastlewest depot in 2026 and will result in significant CO₂ savings. In addition, training has been provided to staff in respect of driving behaviour such as idling that further reduces emissions.

Sustainable Road Infrastructure

Actions #T4 T6

During 2025, Limerick City and County Council delivered significant and tangible progress under the Limerick–Shannon Metropolitan Area Transport Strategy. Key achievements included the continued delivery of active travel and pedestrian infrastructure, the embedding of city-centre safety measures such as 30km/h speed limits, and substantial advancement of strategic transport infrastructure. Progress was achieved on major sustainable road schemes, including the Coonagh to Knockalisheen Distributor Road Scheme, the Bloodmill Road Realignment Scheme, and the Cappamore Junction Improvement Scheme, all of which provide improved safety, enhanced connectivity, and high-quality facilities for pedestrians, cyclists, and vulnerable road users, while supporting modal shift objectives.

The BusConnects programme progressed through planning and early delivery stages, strategic Park & Ride sites advanced through planning and land acquisition, and electrification of the Limerick city bus fleet was substantially

completed. The Electric Vehicle Charging Strategy advanced with pilot charging sites scheduled to become operational in early 2026.

Spotlight - Limerick's Public EV Charging Network

Actions # T7 T16 T19 B4

LCCC's Travel & Transport team with ZEVI (Zero Emission Vehicles Ireland) funding advanced 12 new pilot sites with P&D Lydon Ltd. completing civil and electrical works throughout 2025.

The Council procured a longterm CPO (Charge Point Operator), awarding a 10-year concession to Weev Ltd. in 2025. Installation of 100 kW chargers began in Q1 2026 across the pilot locations.

Once live, this network will provide over 1,200 kW of charging capacity—placing Limerick at the forefront of public EV infrastructure and supporting national and EU climate targets.



Complementing the roll out of a public charging network and the introduction of byelaws an open procurement process was conducted to appoint a service provider for a regularised Car Share scheme in the city. Outline agreement with a leading market service provider was advanced in 2025 with the intention re-commencing a targeted trial service in Q2 2026.

Active Travel

Active Travel Schemes & Data

Actions #T4 T6 C1

Active travel delivery in 2025 focused on accelerating modal shift away from private car use by expanding safe, accessible walking, wheeling and cycling networks across Limerick. Supported by the National Transport Authority (NTA), over €25 million was invested in active and sustainable travel projects during the year, guided by the Limerick Metropolitan Cycle Network Study. This investment directly supports climate mitigation objectives by enabling shorter trips to be made by active modes and by improving access to public transport.



To strengthen evidence-based delivery and track progress towards modal shift, the Active Travel team led a programme of mobility data collection and analysis in 2025. Data initiatives included:

- The deployment of micro radar technology to monitor pedestrian footfall
- Cyclability audits using route-based video surveys to identify network gaps and priority improvements
- Ongoing cordon surveys to track vehicle movements at key locations



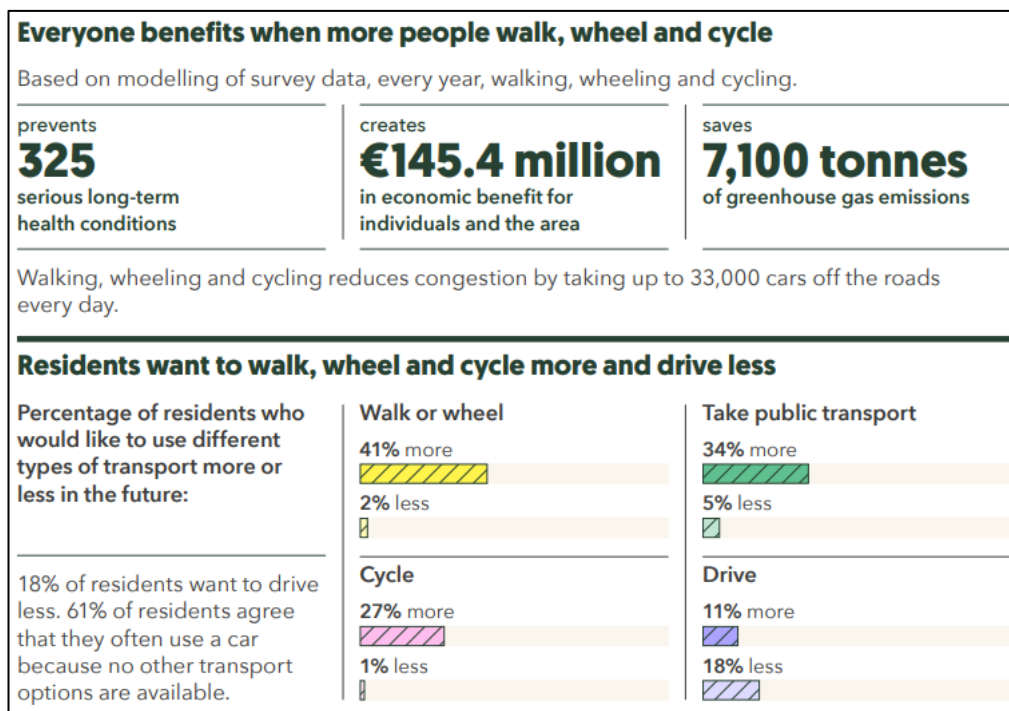
Limerick Shannon Metropolitan Area Walking & Cycling Index

Actions #T4 T6 C1 B9

The Walking and Cycling Index 2025 provides important evidence base for assessing progress on modal shift and climate mitigation in the Limerick–Shannon Metropolitan Area. Produced with the National Transport Authority, it is based on local data, modelling and an independent survey of 1,106 residents conducted in 2025. A summary of the findings is set out below.

The findings show strong latent demand for active travel, with 41% of residents wishing to walk more and 27% wishing to cycle more, alongside widespread support for physically separated cycle infrastructure and improved footpaths. Modelling demonstrates that increased walking, wheeling and cycling delivers significant climate,

health and economic benefits. These findings are informing the prioritisation and design of active travel measures under the LACAP to support sustained modal shift and emissions reduction.



Spotlight - 3 Kilometres of New & Improved Footpaths

Action #T4

In 2025, the Active Travel Programme delivered significant progress in expanding safe walking and cycling infrastructure to support modal shift away from private car use. Over €25 million was invested in city and county schemes, including the Mill Road, R510 Raheen–Quinn’s Cross, Plassey Park Road and Bloodmill Road projects. Delivery also included footpath upgrades across towns and villages such as Feohanagh, Cappamore, Kiltelly, Doon, Murroe and Athea. Schemes incorporated public lighting upgrades and tree planting and landscaping, improving safety, comfort and the quality of the public realm. Collectively, these measures enhance everyday walkability and health outcomes across the county.



Built Environment & Energy

The built environment accounts for 17% of emissions in Limerick and within the council our corporate building stock accounts for 28% of total energy consumption with public lighting accounting for 47% of energy consumption. Making all our buildings more energy efficient is therefore a key element of our climate transition.

Council Operations

Addressing the energy demand of Council buildings and public lighting remains a critical priority for achieving the LACAP's emissions-reduction and energy-efficiency targets. Delivery in this area is supported through a combination of corporate building retrofitting, public lighting upgrades, and strengthened energy management arrangements. Progress and performance in these areas are detailed below.

The Energy Management Team within the Council and in particular the Energy Officer monitors the Councils energy performance and supports building managers within the organisation to manage and reduce energy consumption. In 2025, Limerick City and County Council Energy Management System (EnMS) was recertified to the ISO50001 standard.

Within Limerick City and County Council buildings account for 20% of the Councils energy consumption and public lighting accounts for 43.5% of energy consumption. The LACAP identified several key priorities to address its emissions in the first instance:

- Retrofit of the Council's own buildings and facilities, to include renewable energy, and renewable heating systems to decarbonise the buildings and facilities and reduce energy consumption
- Retrofitting of public lighting to LED will substantially reduce electrical demand

Pathfinder

Action #B18 B12, B13

Managed by the Sustainable Energy Authority of Ireland (SEAI), the objective of the Pathfinder programme is to support public bodies in meeting the 2030 emission reduction and energy efficiency targets. The programme provides up to 50% match funding for projects that accelerate the process of decarbonisation of public building stock. In 2025, Limerick City and County Council in partnership with Kerry and Clare County Councils formally entered the Pathfinder Programme with the establishment of the Mid-West Energy Unit. Over the course of 2025 Limerick City and County Council have carried out detailed investment grade audits that sets out in detail the range of interventions to be considered. These audits were carried out by the Tipperary Energy Agency as part of the EU sponsored TRESS project. The next stage will see the commencement of detailed design work for the three main corporate buildings.

Furthermore, as part of the Pathfinder programme, SEAI provided 100% finance to Limerick City and County Council to carry out a District Heating Feasibility Study for the metropolitan area. The development of district heating is a key objective of the government Climate Action Plan and is an identified opportunity in the Decarbonisation Zone strategy. This District Heating Feasibility Study will be completed in 2026.

Public Lighting Energy Efficiency Project (PLEEP)

Action #B15

Limerick City and County Council is one of twenty-one local authorities taking part in the National Public Lighting Energy Efficiency Project (PLEEP) to upgrade all public lights to LED. The project will upgrade approximately 205,000 public lights across the twenty-one local authorities through an investment of €150 million.

Limerick City and County Council have over the last number of years put in place an active programme of light replacement that will support the PLEEP project. To-date, Limerick City and County Council have replaced over 2,500 public lights to date. It is estimated that the replacement of these lights will deliver approx. 750,000 kWh of electricity savings per annum.





To date:

- Limerick City and County Council have in advance of the project commencing has put in place an active programme of light replacement
- The Council have replaced over 2,500 public lights to date through the PLEEP, with the remaining 2,600 to be done in 2026

Social Housing Retrofitting

Action #B17

Retrofitting of the social housing stock is identified as a key action within the LACAP not just as a means of reducing carbon emissions but critically in addressing fuel poverty and ensuring “no one gets left behind”. Retrofitting includes 'wrapping' house insulation in attic, new windows and doors, heat pumps where suitable. Please see below key deliverables in 2025.

Housing 2025 Actions #B7 B12 B13 B17		
60 houses retrofitted		20% stock condition survey complete
Energy Retrofit Programme designs and surveys completed by LCCC		Complete Traditional homes pilot (SEAI)
New builds A2 rating Upgrades at B2 BER		LCCC Energy Cloud Combat energy poverty
Traveller Accommodation Programme 2025-2029 2 energy efficiency recommendations		Solar panels Rathkeale Traveller Accommodation Contractor procured

Regeneration Thermal Upgrade Programme

Action #B17

Limerick City and County Council’s Regeneration Programme has since 2013 undertaken a significant programme of thermal upgrade works in addition to the social housing retrofitting programme.

Thermal upgrade works involve a combination of insulation of roofs, walls and floors, the upgrading windows and doors, improving heating systems and controls, and related ventilation measures.

In 2025, 47 units were completed. By the end of the programme approx. 1517 properties will have been thermally upgraded.

Flood Resilience - Implementation of the CFRAM Flood Risk Management Plans

Action #B3

The LACAP identified that one of the most severe effects of climate change that can be anticipated, and a key climate change adaptation issue, is the management of rainfall runoff as global temperature rises and rainfall patterns change. These severe weather events and sea level rises are having a considerable impact on flooding and flood risk for communities and infrastructure across Limerick. The commencement of the Kings Island Flood Scheme in September 2024 will ensure that significant flooding events (2014) will be mitigated against. These works are due to be completed in 2026.

Over the course of 2025 (and before):

- Adare Flood Relief Scheme: Impact Assessment Report at Final Review
- Athea Flood Relief Scheme: Environmental Impact Assessment Report (EIAR) complete and land Acquisition mapping finalised
- Limerick City and Environs Flood Relief Scheme: Ecological surveys progressed, stakeholder meetings on options progressed and public realm proposals and funding options being reviewed

Governance & Leadership

Embedding climate action across all the Council's operations is a key objective of the LACAP. The Climate Action Unit (CAU) plays a central role in supporting, coordinating, advising and reporting on the implementation of the LACAP within and across the Council. The core roles of Limerick's CAU comprise the following:

- Climate Action Coordinator
- Climate Action Officer
- Community Climate Action Fund Officer
- Energy Officer
- LGMA Graduate

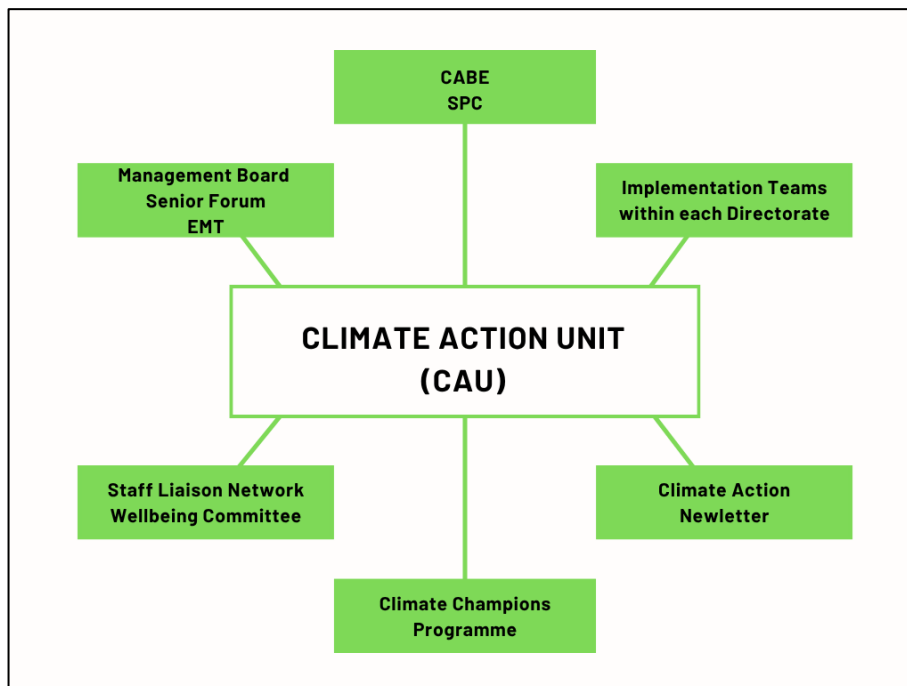
Embedding Climate Action

Actions # G7 G10 G12

The LACAP is being implemented by all departments within the Council. The CAU plays a central role in coordinating the implementation of the LACAP action across the organisation.

The reporting structure for the Council's LACAP is through the Senior Forum, chaired by a Director of Service and comprised of the Senior Staff with the Council. Implementation of the LACAP is also supported through the

Climate Champions programme (detailed below), Staff Liaison Network, Wellbeing Committee, and the Climate Action Newsletter.



Over the course of 2025 several key decisions/actions were presented to the Senior Forum and Management Board:

- A review of progress on implementing the LACAP
- A review of the energy performance of the council and an update to the Energy Policy.
- Participation in the Pathfinder programme
- The undertaking of the District Heating Feasibility Study
- The Climate Champions Programme

In addition, the CAU has participated in and provided:





- A presentation to staff liaison network and one presentation to the well-being committee
- Staff induction training
- Staff newsletters were issued in the course of 2025

Staff & Climate Action

Staff Climate Action Training

Actions #G1 G2

Education and training are essential elements in embedding Climate Action into the operation of the Council. The Local Authority Climate Action Training Programme was developed by CARO. It aims to strengthen and empower Local Authority climate action leadership and build awareness and capacity within the sector. In 2025, 165 Council staff completed this training which covered a wide range of climate themes for both indoor and outdoor staff. In addition to this, 132 staff completed additional training, for example, green procurement, Nearly Zero Energy Buildings (NZEB) Awareness Days or eco driving techniques for truck drivers.

297 Staff Completed Climate Related Training in 2025		
Actions #G1 G2 G4		
48 X Building Capacity		87 X EcoDriving Techniques Cut fuel use & reduce CO ₂ emissions Truck drivers
16 X Green Procurement		29 X NZEB Awareness Day
67 X Raising Awareness (Indoor Staff)		137 X Delivering Action (Outdoor Staff)
CAROLA CAPs Climate Change Sectoral Adaptation Plan (CCSAP)		Historic Structure Fund Conservation Advice Scheme

Climate Awareness Survey

Actions #G2 G10

A key output of the CAU in 2025 was the circulation of a staff awareness survey. The purpose of the survey was to gain an understanding of Limerick City and County Council staff's awareness and attitudes towards climate change and to identify actions the CAU could take to address concerns raised. A total of 189 responses were received from staff across a range of service areas. The survey findings informed internal capacity-building priorities and directly supported the development of targeted interventions, including the Climate Champions Programme and expanded staff training provision. Key results are summarised below and provide an evidence base for continued organisational engagement and behaviour-change initiatives under the LACAP. The work was showcased in an article published by the Local Government Information Unit (LGIU)⁶.

- 55% are aware of Limerick City and County Council climate action initiatives or policies
- 31% participated in climate related training
- 50% think climate actions should be a very high priority for LCCC
- 85% want to learn more about climate related issues (see fig 9)

⁶ ['What we learned from speaking with staff about climate action'](#)

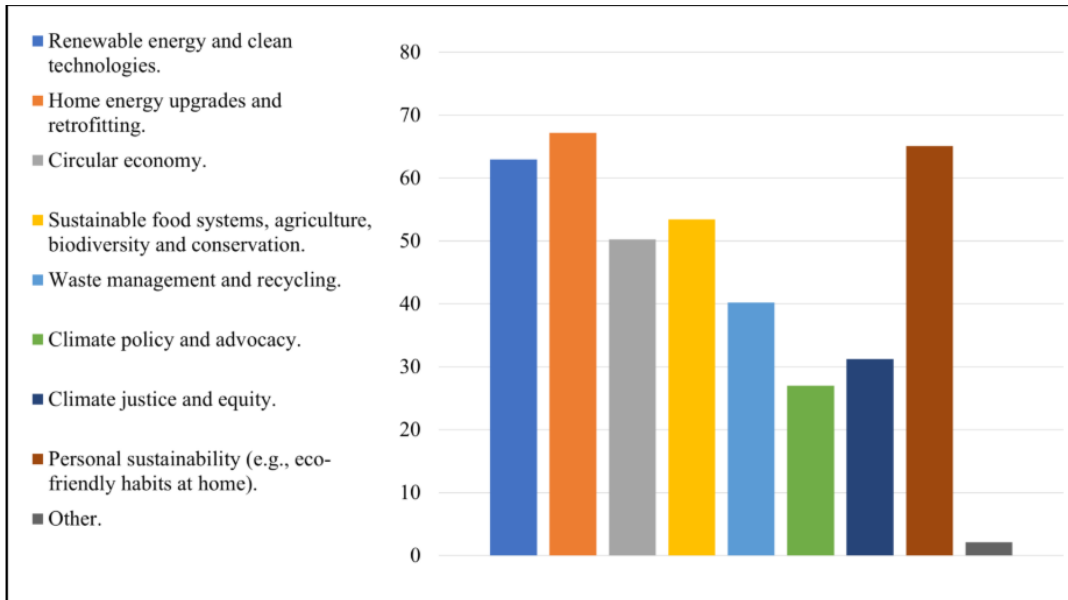


Figure 9: What Staff Want to Learn

Spotlight - Climate Champions Programme

Actions #G10

One of the outputs from the survey was the development of the Climate Champions Programme. The Climate Champions Programme aims to address the issues raised in the survey and support staff from across the organisation to be champions of change both inside and outside of the Council. The Champions partake in a wide range of activities, such as managing compost bins in kitchenettes and offices, installing a clothes swap rail, sharing climate related experiences/ideas, going on site visits.



The Champions also piloted Home Energy kits which are now open to all staff. Each borrower completes a survey during the loan time and a follow-up two months after, to give feedback.

Experiences can be either shared during a Climate Champion meeting, or through the Climate Action Newsletter (all staff).

AUG 25

CLIMATE CHAMPIONS

POLL RESULTS

- Expand your own climate awareness & knowledge
- Learn from others/diff depts.
- Support on how to engage staff longterm
- Interested in energy efficiency & circular economy
- Yes, to fieldtrips & updates
- What is the council doing for CC & CA

Junior Achievers Ireland

Actions #C1 C5

Junior Achievement Ireland (JAI) is a non-profit organisation established in 1996 that partners with schools and businesses to provide experiential, volunteer-led education programs for students aged 5-18. It focuses on fostering employability, entrepreneurship, financial literacy, and STEM skills to bridge the gap between education and the working world.

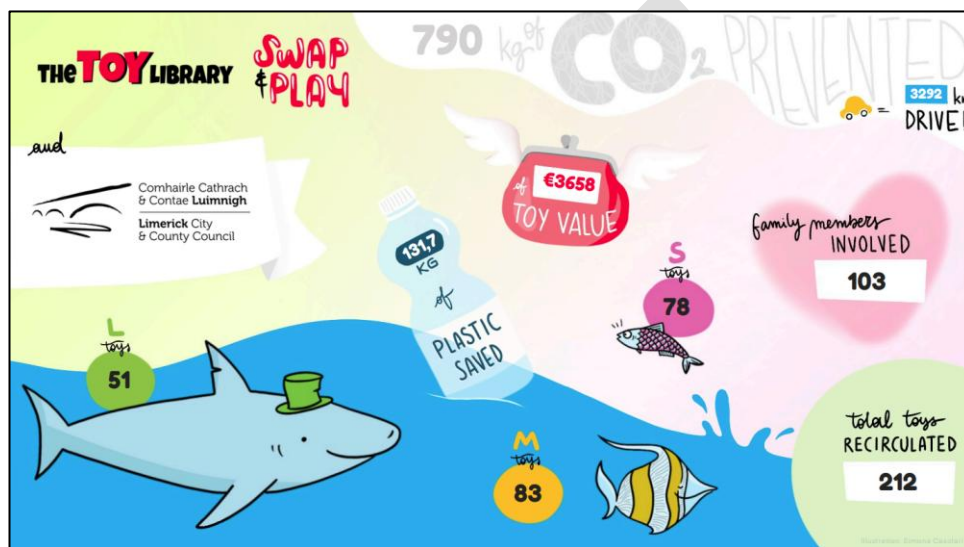
In 2025, Limerick City and County Council staff including the CAU delivered JA climate related workshops to 98 primary school pupils.



Spotlight - Climate Action Week

Actions #G2 C1 C5 C6 C9 C13 N13 N14

Limerick's first [Climate Action Week](#) (28th April - 3rd May) demonstrated Limerick City and County Council's commitment to taking a leadership role in promoting climate action both internally and externally. Over the course of the week 17 events were held across the city and county. Events and workshops focused on waste management, food growing, toy swaps, book swaps, circular economy initiatives such as composting or repair shops, exploring local woodlands, STEM activities, batch cooking, energy cafés, art exhibitions and dance performances. The most attended event was the Toy Library held in city hall. Over 100 people young and old came to donate/swap toys or just to play.



Spotlight - Award Limerick WHO European Healthy City - support people and the planet

Actions #G12 C5 C6 C14

Limerick City and County Council was awarded to the World Health Organisation (WHO) European Healthy Cities and Counties Network – Phase VII. Healthy Cities are designed to support both people and the planet recognising the interconnectedness of human, animal and environmental health through a One Health approach.



Spotlight - The Fireplace Site

Action #G6 G8

The Council secured over €6.5 million to transform Nos. 35–39 Nicholas Street, the Fireplace Site, into a new Design and Innovation Hub as part of the THRIVE Scheme. The hub will offer studios, exhibition, café, and retail areas creating a vibrant destination at the heart of King's Island.

An essential element of the project's development was the preparation of a Climate Proofing Assessment to evaluate the project's overall climate impact across carbon impact, energy performance, and resilience to flooding, heatwaves, and extreme weather. The methodology use will provide a template for similar project evaluation within the Council.



Community & Partnership

Community engagement for climate action is a crucial aspect for addressing one of the most challenging aspects of our time at all levels of local governance. This type of specific engagement is a central process that will involve individuals, organisations and communities working together to address the shared concerns around climate change and its implications.

Limerick City and County Council seek to foster collaboration to enhance the wellbeing of communities by involving them in decision-making, problem solving and delivery of climate related initiatives.

Engagement raises awareness, gathers diverse perspectives and collaborates on strategies to reduce greenhouse gas emissions, build resilience to climate impacts, and the transition to a sustainable society overall. The table below sets out some of the wide-ranging community climate related projects delivered throughout 2025.

Community & Partnership Actions #C1 C2 C5 C6 C8 C12 C13 C14		
Faith Communities 10 X Churches Pollinator workshops, signage, nature report		Hare's Corner 120 X applications Landowners, community groups
57 X applications Tidy Towns		78 X applications Going for Gold
169 X Green Schools Mungret Park awarded Green Flag		Midwest Simon Community Kitchen created
Period Equity Programme 49 X sites Encourage sustainable period wear		Integration Health & Wellbeing Conference Food poverty, period equity & quality greenspace

Community Climate Action Programme

Actions #C11 C12 C13 C14

The Community Climate Action Programme supports communities across Limerick to deliver practical, locally led climate action aligned with county and national climate targets, in partnership with the Department of the Environment, Climate and Communications (DECC). The programme aims to build low carbon, sustainable communities by enabling action at local level.

In 2024, Phase 1 of the programme (Building Low Carbon Communities) provided €811,000 in funding, supporting 19 not-for-profit community projects across Limerick. All projects were 100% funded and addressed key climate themes including community energy, sustainable travel, food and waste, responsible consumption, recycling, and local environmental action. Building on this delivery, applications for Phase 2 funding (€811,000) opened in October 2025, supporting continued community led climate action.

Spotlight - Doon Social Farm (Ballyhoura Rural Services)

Actions #C11 C12 C13 C14

Doon Social Farm is a certified organic farm, social enterprise, and registered charity in County Limerick that integrates sustainable food production, social inclusion, and climate action. Through its social farming programmes, including the *Happy Saplings* initiative, the farm engages young people in hands-on, farm-to-fork activities that combine organic food production with education on sustainability, healthy eating, and environmental stewardship. Participants take part in growing food, harvesting produce, preparing meals, and sharing food, delivering measurable benefits for health, wellbeing, and environmental awareness.

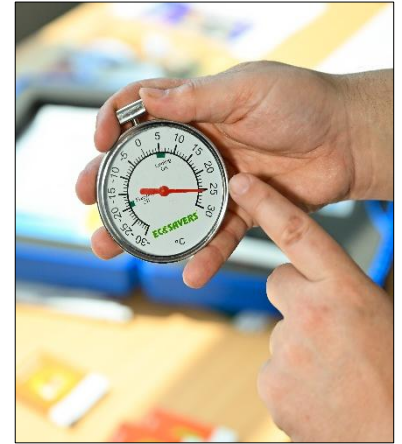
Supported by Ireland's Community Climate Action Programme, the farm delivered a wetland restoration project in 2024–2025, including the creation of a new wetland pond and a 400-metre wetland walk. Native wetland species such as bulrush, kingcup, and sedge naturally filter pollutants, improving water quality flowing into the Mulcair and Shannon rivers. The project delivers climate, biodiversity, and water quality benefits while supporting the return of native species such as the snipe and marsh fritillary butterfly. See before and after below (L-R).



Spotlight – St. Mary’s RFC

Actions #C11 C12 C13 C14

St Mary’s RFC delivered a renewable energy upgrade with support from the Community Climate Action Programme, improving the sustainability and resilience of local sports infrastructure. The project included the installation of solar PV panels, a modern inverter, and battery storage at the club’s facilities. This system enables on-site generation of clean electricity, reduces reliance on grid power, and lowers operating costs and carbon emissions. Battery storage allows surplus energy to be used when needed, increasing efficiency and energy resilience. The project demonstrates how community organisations can take practical climate action while strengthening long-term infrastructure sustainability.



Spotlight - Thomondgate Biodiversity Trail

Actions #C8 C11 C12 C13 C14

Two previously underused green spaces in Limerick have been transformed into contemplative community amenities through a project led by the Thomondgate Residents Association, supported by climate action funding. The initiative focused on Canon Breen Park and the green space between Cross Road and Quarry Road, enhancing local biodiversity while creating meaningful spaces for reflection and remembrance.

Funding from the Community Climate Action Programme enabled the planting of 60 mature native trees and 30 metres of native Irish hedging, strengthening urban biodiversity and habitat connectivity. Each tree is dedicated to a loved one who has passed away, with plaques marking individual memorials. What began as a biodiversity project has evolved into a living memorial, fostering social connection, supporting wellbeing, and strengthening community stewardship of local green spaces while contributing to wider climate and environmental goals.



Síolta Glasa

Actions #C8 C12 C13 C14

Síolta Glasa was funded as part of the Creative Climate Action Fund II and facilitated by the CAU and the Arts



Office Limerick City and County Council. Its purpose was to harness culture and creativity as a means of building climate awareness and supporting behavioural change at community level. The project brought seven community groups together with creative partners to explore and champion decarbonisation in their communities through a variety of creative mediums. Projects ranged from training programmes, extending the life of clothing through repair and repurposing, increasing awareness of a bog habitat as a carbon sink, promote sustainable travel and transport in a local train station.

Citizen Innovation Lab

Action #C9

Funded through the Horizon 2020 +CityxChange project, Limerick's Citizen Innovation Lab provides a space for experimentation, cocreation, and citizen-led climate action. Delivered in partnership between the University of Limerick and Limerick City and County Council, the Lab supports collaborative research, digital and citizen-science tools, and public engagement on sustainability and climate action. Accredited by the European Network of Living Labs, it is recognised as international best practice. During 2025, the Lab hosted and facilitated almost 50 climate-related workshops, projects, and public engagement activities, supporting innovation, learning, partnership and participation in Limerick's low-carbon transition.

Citizen Innovation Lab Activities

- Climate Action Week
- The Limerick Lifelong Learning Festival
- Twin Cities Finland Team
- Climate Change Sectoral Adaptation Plan I & II Workshop
- URBACT Project Event
- ISCycle 2
- The Limerick Cycling Campaign Group
- Cycling Ireland
- The Active Travel Team
- Inaugural Transport & Mobility Forum Meeting
- Limerick Lace
- Sewing Workshop
- The Repair Café
- Síolta Glasa
- Cruinniú na nÓg
- Local Sports Plan Workshop

Natural Environment

The LACAP acknowledges the importance of protecting, maintaining, and enhancing our Natural Environment in accordance with the framework set out in the County Development Plan. Limerick's natural habitats and biodiversity are based around a large network of rivers, grasslands and established woodlands. While a rich

network of urban greenspaces are in place, there is potential to further enhance the value and quality of these areas by creating strong, multifunctional linkages between them, in keeping with the principles of [European Green Infrastructure Strategy](#). The LACAP highlights the importance of maintaining and development a healthy ecosystem, the adoption of green infrastructure and Nature based Solutions as well tree and hedgerows.

Nature Based Solutions

Action #N6

Research consistently demonstrates the value of green and blue infrastructure—such as parks, greenways, and traffic-free spaces—for public health, education, play, and ecosystem enhancement. The LACAP highlights the importance of the [Blue Green Infrastructure Strategy](#) as the framework for delivery of integrated biodiversity, surface water management and climate resilience into developments.



In 2025, the Council progressed this action by embedding low-carbon and nature-based approaches into the design, creation, and maintenance of public spaces. Measures included re-use of materials from existing parks, incorporation of Sustainable Drainage Systems (SUDs) such as rain gardens and swales, recycling of felled trees for seating and landscaping, and minimising imported materials. Reduced-mowing regimes and expanded managed wildflower areas were also applied through the planning application review process.

Nature Based Solutions (NBS) and SUDs were advanced across several key projects, including:

- The Fosse Project associated with regeneration works at King’s Island
- The Patrickswell Sports Campus proposal includes proposals for water storage on site and increased biodiversity
- URBACT Design for Limerick City is developing proposals to reduce hard surface areas in favour of rain gardens
- Future Lakes at Lough Gur provides an integrated approaches for the restoration of the lake’s ecosystem.
- URBACT ReDAN project will develop proposals to transform wastewater basins into biodiversity hotspots.

Biodiversity Plan

Actions #N1 – N17

Limerick’s Biodiversity Action Plan (LBAP) 2025–2030 was adopted in March 2025, providing a coordinated framework for conserving, enhancing, and restoring biodiversity across Limerick city and county. The Plan focuses Council resources and stakeholder action on addressing the biodiversity crisis in partnership with communities, conservation groups, and individuals.

During 2025, delivery was supported through a programme of public engagement, monitoring, and training activities, including the National Mayfly Survey, Shannon Estuary Birds & Storyboard, Woodland Bat Monitoring Survey, and hedgerow training in Newcastlewest Demesne and Curraghchase. Limerick Biodiversity Week further advanced LBAP objectives, alongside completion of a wetland survey, introduction of pilot conservation grazing at Coonagh Nature Reserve, and identification of potential landscape corridors for the lesser horseshoe bat using Circuitscape (Phase I).



The Future of Moths and Butterflies in Ireland Conference acted as a flagship LBAP initiative, supporting both citizen science and professional conservation capacity. Practical biodiversity actions delivered in 2025 included 641 trees planted, 4,500 native whips distributed, completion of GreenPlace URBACT, and Biodiversity URBACT, strengthening habitat protection, pollinator awareness, and ecological connectivity.

Spotlight - Harvesting & Growing Local Oak Trees

Actions #N11 N12

Limerick City and County Council and the community collected acorns for creating a stock from one of Limerick’s veteran trees found in Baggot Estate. The acorns have sprouted and will continue growing in the Council’s nursery. Once ready they will be planted in the Council’s local parks and estates.



Air & noise monitoring: Real-time insights for a healthier Limerick

Action #N16 E11

The [Noise Action Plan 2024-2028](#) sets out to proactively manage environmental noise where it may have a significant adverse impact on the health and quality of life. The Council supports the aims of the Environmental Noise Regulations, through the development and implementation of Noise Action Plans.

In 2025, Limerick City and County Council launched a new Environmental Monitoring Dashboard, giving the public real-time access to air quality and noise data across the city and county (click [HERE](#) and [HERE](#)).

Spotlight - People's Park: A living soundscape

Actions #N13 N16



People's Park is recognised as a Candidate Quiet Area under the Limerick Agglomeration Noise Action Plan 2024–2028. While traditional noise metrics show sound levels above typical Quiet Area criteria, the character of the soundscape tells a different story. Here, the environment is shaped not by traffic, but by birdsong, nature, and low impact human activity—sounds that people generally find pleasant, calming and beneficial for wellbeing.

Following public consultation and engagement with the EPA, a formal proposal to designate the park as a Quiet Area was submitted to the Department of Climate, Energy and the Environment in December 2025.

Environment & Circular Economy

The LACAP recognises the need to transition from a linear economic model (take–make–use–waste) to a circular economy centred on designing out waste and maximising reuse, repair, and recycling. This transition is supported nationally through the [Waste Action Plan for a Circular Economy 2020–2025](#), the [National Waste Management Plan for a Circular Economy 2024–2030](#), and public consultation in 2025 on the [Whole of Government Circular Economy Strategy 2026–2028](#).

Across Limerick City and County Council, circular economy actions were delivered at both operational and strategic levels in 2025. At operational levels, initiatives included eliminating single-use cups through reusable delph, recycling of coffee pods, and staff-led clothing swaps with surplus donated to local charities.

At a strategic levels, Limerick City and County Council circular economy actions were seen across infrastructure, public spaces, and community programmes. The Adare Bypass embedded emission avoidance through mass haul balancing and local reuse of excavated materials, reducing imported aggregates, haulage, and landfill disposal. Felled timber from Council works is now repurposed as natural play features in parks and greenspaces. Circular economy awareness was further strengthened through education with 169 schools participating in the Green Schools programme (approximately 86% of all schools in Limerick) and 38 schools being awarded Green Flags in 2025. Community initiatives also saw strong uptake, with 78 applications to Limerick Going for Gold and 57 Tidy Towns applications, reinforcing local participation in sustainable and circular practices.

Return & Employ

Actions #G2 C1 E2 E7 E10

The 'Return & Employ' initiative demonstrates how circular economy measures can deliver both environmental and social benefits. The scheme supports the circular economy by reducing single-use plastic waste while creating meaningful, paid employment opportunities for people in the disability sector. Supported by Limerick City and County Council in partnership with the HSE and The Urban Co-Op, programme participants regularly collect Re-turn deposit bottles and cans from Council buildings at Dooradoyle and Merchants Quay. Materials are returned to reverse vending machines, with deposits contributing directly to wages, ensuring participants receive at least the minimum wage.



Limerick Greenway Award

Actions #E4 E5

The Limerick Greenway received international recognition, winning Third Prize in the Excellence Category at the 12th European Greenways Awards in Spain. The 40km route promotes low-carbon travel, supports the [EuroVelo 1 network](#), and has attracted over 680,000 users since 2021. Judges highlighted the reuse of historic railway infrastructure, which reduced construction-related emissions, and inclusive design features such as [U-Turn audio](#) installations with ISL interpretation, reinforcing the Greenway's environmental and social value.



Spotlight - Riverfest Sustainability

Action #E8

Riverfest Limerick, the flagship May Bank Holiday festival, won Best Event and Best Green Event at the Event Industry Awards (EIAs), recognising excellence in live event delivery and leadership in sustainability. The festival delivered major sustainability improvements, including an 88% reduction in fuel-related carbon emissions over two years through the switch to HVO fuel, generator right-sizing and power-down schedules, a 14% reduction in waste volumes, and a 51% reduction in waste-related CO₂ emissions.




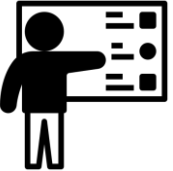





Priorities for 2026

Limerick City and County Council has continued to progress implementation of the Local Authority Climate Action Plan, with delivery evident across energy efficiency, sustainable mobility, and community engagement. Of the 98 actions contained in the Plan, 7 actions are complete and 71 actions are ongoing, with a significant number classified as recurring, reflecting the ongoing and multi-year nature of climate action implementation. This level of progress indicates that the Plan is being actively implemented, however, challenges remain in ensuring consistent integration of climate action objectives across all service areas.

Accordingly, 2026 will focus on strengthening organisational embedding, delivery oversight, and performance monitoring. Progress will continue to be tracked through structured internal reporting and external engagement, ensuring alignment with national reporting frameworks and statutory requirements. The priorities set out below are organised under the thematic structure of the LACAP and represent corporate-wide priorities, requiring collective ownership across Directorates. This approach provides assurance that climate action delivery remains a shared organisational responsibility and that the Council is positioned to maintain progress towards its climate mitigation and adaptation targets.

PRIORITIES FOR 2026

	<p>Monitoring and Reporting</p> <ul style="list-style-type: none"> a. To continue to monitor and report on progress in implementing the LACAP b. To maintain ISO5001 accreditation and to report the Council's overall performance to the SEAI M&R dashboard
	<p>Travel and Mobility</p> <ul style="list-style-type: none"> a. To expand the use of HVO into the Newcastle West Depot b. To commence the process of procuring the Council's first EVs
	<p>Built Environment and Energy:</p> <ul style="list-style-type: none"> a. To progress in the Pathfinder programme to design stage for 3 corporate buildings b. To continue to implement the Kings Island Flood Relief Scheme and progress all other schemes c. To complete the District Heating Feasibility Study for the Metropolitan Area
	<p>Governance and Leadership:</p> <ul style="list-style-type: none"> a. Roll out the Climate Champions Campaign across the organisation b. Meet each directorate to discuss their climate action initiatives at least twice a year c. Make applications for funding to the EU to support Climate Action in Limerick d. Report on progress in implementing the LACAP across the year and highlight best practice across the council
	<p>Community and Partnership:</p> <ul style="list-style-type: none"> a. To oversee the implementation of phase 2 of the Community Climate Action Programme and the completion of phase 1 b. To deliver Limerick's second Climate Action Week c. To develop a group-based programme to support communities in Limerick d. Continue to identify and engage with communities across Limerick on Climate Action and to support their actions where possible e. Engage with our third level institutions in supporting research in climate action in Limerick
	<p>Natural Environment:</p> <ul style="list-style-type: none"> a. Support the implementation of the Biodiversity Action Plan b. Partner with LAWPRO and others to implement a NBs pilot in Limerick
	<p>Environment and Circular Economy:</p> <ul style="list-style-type: none"> a. Continue to engage with event promoters such as Riverfest and Ryder Cup to minimise waste and promote the use of sustainable practices b. Develop initiatives to reduce single waste plastics in Limerick City and County Council premises

Appendix 1 LACAP Actions

DRAFT

TRAVEL AND MOBILITY

Ref.	Action	Tracking Measure	Lead	Partners	Impact	SDGs	Status
Objective 1: Modal Shift -							
Support the shift to more sustainable transport modes such as walking, cycling and public transport							
T1	Increase the use of public transport through the implementation of the bus connects programme. Promote - through control or influence, as appropriate - project adherence to planning and environmental protection criteria	No. of routes completed	Travel and Transport Strategy	NTA, Bus Eireann, TII	Mitigation	11	In progress
T2	Develop and implement a park and ride strategy having due regard to environmental sensitivities such as the receiving water environment, biodiversity, European sites, local air quality, traffic and transport conditions and cultural heritage.	No. Park and Ride Locations implemented	Travel and Transport Strategy	NTA, Bus Eireann, TII	Mitigation	9, 11	In progress
T3	Examine the feasibility of the provision of new greenways either within disused rail lines or immediately adjacent to existing or proposed rail corridors having due regard to environmental sensitivities such as archaeology, European sites, biodiversity and amenity value, and the potential to enhance ecological connectivity	KMs of new greenways provided	Mid-West Road Design Office	NTA, Failte Ireland, Active Travel, Travel and Transport Strategy	Adaptation	11, 13	Not started
T4	Implement the Active travel programme in particular the Limerick Metropolitan Cycle Network Study having due regard to environmental sensitivities such as archaeology, European sites, biodiversity and amenity value, and the potential to enhance ecological connectivity	No. of routes completed	Active Travel Team	National Transport Authority	Mitigation	11, 13	In progress
T5	Deliver a network of secure, public bicycle and powered personal transportation parking, to accommodate a variety of bike types across the County, including at schools, parks, playgrounds, towns, and villages having due regard to environmental sensitivities such as the receiving water environment, biodiversity, European sites, and local air quality.	No. of secured parking spaces provided	Active Travel Team	National Transport Authority	Mitigation	11	In progress
T6	Continue to promote active travel, for a wide range of ages, abilities and journey types, utilising LCCC's active travel website, social media and events.	No of updates provided on our communication channels	Active Travel Team	National Transport Authority	Mitigation	10, 11	In progress

Ref.	Action	Tracking Measure	Lead	Partners	Impact	SDGs	Status
Objective: Support the provision of EV infrastructure and other infrastructure across the County to support the transition to zero emissions vehicles							
T7	Prepare an EV charging strategy to support 'public residential and destination charging' locations having due regard to environmental sensitivities such as the receiving water environment, biodiversity, European sites, local air quality, and cultural heritage.	Strategy Developed	Travel and Transport Strategy	NTA, ZEVI	Mitigation	7, 9, 11	Complete
T8	Prepare a freight strategy to support last mile logistics	Freight strategy adopted	Travel and Transport Strategy	TII	Mitigation	9, 11	Not started
Objective: Future-proof the transport network to adapt to the risks posed by Climate change							
T9	Implement an Annual Gully Cleaning Scheme (AGCS) ensuring the plan takes nature-based solutions and protection of biodiversity into consideration.	Annual Update Report	Road Traffic and Cleansing		Adaptation	11	In progress
T10	Implement a bridge rehabilitation programme that is resilient to the impacts of Climate Change having due regard to the need to appropriately protect and conserve protected structures in accordance with relevant protected structures regulations, and the need to not negatively impinge on any protected species or European sites.	Annual Update Report	Road Traffic and Cleansing		Adaptation	11	In progress
T11	Carry out maintenance and rehabilitation of regional and local roads in accordance with the guidance document on the climate adaptation of regional and local roads having due regard to environmental sensitivities such as the receiving water environment, biodiversity, European sites, and local air quality.	Annual Update Report	Road Traffic and Cleansing		Mitigation	9, 11	In progress
T12	In road construction projects, minimise the use of virgin materials and promote the use of reclaimed asphalt pavement (RAP) or low carbon alternatives Ensure material reuse takes place in accordance with Regulation 27 and 28 of the Waste management Act and materials reused are inert and environmentally non-hazardous.	Annual Update Report	Road Traffic and Cleansing		Mitigation	9, 11	In progress

Ref	Action	Tracking Measure	Lead	Partners	Impact	SDGs	Status
Objective: Transition all council fleet and Internal Combustion Machinery (ICE) to be zero emissions							
T13	Prepare inventory of Local Authority fleet, including leased vehicles and status of same	Inventory completed	Road Traffic and Cleansing	Travel and Transport Strategy	Mitigation	9, 11	Complete
T14	Assess individual vehicles of the Class (GVW) available in EV format. Ascertain the minimum annual KM to be of benefit as a change from ICE (Internal Combustion Engine) to EV. Agree a fleet replacement plan to comply with SI-381- 2021 whilst ensuring appropriate end-of-life management practices are in place for Electric Vehicles under the ownership of local authorities.	Number of vehicles replaced by electric vehicles	Road Traffic and Cleansing	Travel and Transport Strategy, Finance	Mitigation	9, 11	In progress
T15	For the vehicles that will not migrate to EV, assess EURO Stage emissions and look at replacements with newer improved emission levels. Alternatively Switch from DERV to HVO (Hydrotreated Vegetable Oil) proposed test at Park rd depot before rolling out to main depots Ensure renewable fuels procured by the local authority are sourced from sustainable sources.	Implementation of test activities	Road Traffic and Cleansing	Travel and Transport Strategy	Mitigation	9, 11	In progress
T16	Assess depots etc. for suitability for EV charging and parking to include potential for solar generation to support charging Ensure development supported by the strategy is delivered in a manner that has due regard to environmental sensitivities (European sites, biodiversity, built heritage, glint and glare impact) and available grid capacity.	Delivery of Report	Road Traffic and Cleansing	Facilities	Mitigation	9, 11	Not started
T17	Assess of non-vehicle ICE usage within the organisation, Con Saws, Leaf Blowers, etc. to establish what can be migrated to chargeable options.	Inventory Completed	Road Traffic and Cleansing		Mitigation	9, 11	Not started
T18	Assess & record ICE vehicle idling and implement training programme to increase awareness and reduce occurrence.	No. of staff trained	Road Traffic and Cleansing	Human Resources	Mitigation	9, 11	In progress
T19	Examine the viability of establishing an EV pool to include optimum locations. Establish charging locations and booking platform.	Establishment of system	Road Traffic and Cleansing	Finance, Human Resources	Mitigation	9, 11	In progress
T20	Appoint a dedicated Walking and Cycling Officer within the Local Authority	Officer Appointed	Human Resources	Travel and Transport Strategy, Active Travel	Mitigation	9, 11	Not started
T21	Implement a smarter travel workplace plan for corporate buildings	Delivery of Plan	Human Resources	Facilities, Human Resources, Travel and Transport Strategy	Mitigation	9, 11	Not started

BUILT ENVIRONMENT AND ENERGY

Ref.	Action	Tracking Measure	Lead	Partners	Impact	SDGs	Status
Objective: Create a policy framework to support the transition to carbon neutrality across county.							
B1	Implement the LCCC County Development Plan 2023	Core strategy targets as set out in the CDP	Planning		Adaptation	3, 7, 8, 9, 11, 12, 13	In progress
B2	Prepare a renewable energy strategy for Limerick incorporating all forms of renewable energy including integrated renewables that will guide the development of new energy infrastructure in the county. This strategy shall be informed by planning and environmental protection related considerations and constraints	Adoption of Strategy	Planning		Mitigation	7	Not started
B3	Implement the Catchment Flood Risk Management (CFRAM) programme across Limerick following the OPW Plans (2016) for Athea, Adare, Askeaton, Croom, Foynes, Newcastlewest, Rathkeale, Castleconnell and Limerick City and Environs Ensure due regard is given to promoting Sustainable Drainage Systems, nature-based solutions, and environmental sensitivities, including water quality, biodiversity, European sites, riparian corridors and aquatic ecology.	Number of schemes completed	Planning, Environment and Place-Making	OPW	Adaptation	11	In progress
B4	To support communities to be make the transition to EV it is necessary to set out a strategy for the development of a public charging network across the county that is based on site suitability, grid capacity and demand. The strategy will identify both on street and off-street options including the provision of eMaaS hubs. Ensure development supported by the strategy are delivered in a manner that has due regard to environmental sensitivities (European sites, biodiversity, built heritage) and available grid capacity.	Strategy Completed	Travel and Transport Strategy	Environment	Mitigation	9, 11	Complete
B5	Carry out a feasibility study on the introduction of a district heating network in Limerick City	Study Completed	Planning, Environment and Place-Making	DECC, LDA, SEAI	Adaptation	7	In progress

Ref.	Action	Tracking Measure	Lead	Partners	Impact	SDGs	Status
Objective: Provide additional infrastructure to support communities to become climate resilient							
B6	Investigate the establishment of a sustainable investment fund to support the retrofitting of historic buildings across Limerick	Report completed	Climate Action Team	DG REFORM, DPER, DECC, SEAI	Adaptation	7, 11	In progress
B7	Support owners of historic buildings to carry out appropriate retrofitting initiatives by developing guidance and supports	Guidance Document Published	Climate Action Team	Conservation Officer	Adaptation	7, 11	In progress
B8	Partner with the Chamber of Commerce to encourage businesses to carry out energy efficiency upgrade works to their premises and to reduce their carbon emissions	No. of buildings upgraded	Climate Action Team	Chamber of Commerce, SEAI	Adaptation	7, 11	In progress
Objective: Increase the resilience of people, businesses and infrastructure to the effects of climate change							
B9	Implement the Blue Green Infrastructure strategy for Limerick City and Environs whose aim is to inform and guide the planning and management of green and blue spaces in Limerick City and Environs, including our rivers, parks and open green spaces, helping drive the transition to a low carbon and climate resilient society having due regard to opportunities to enhance tourism, recreation and cultural heritage value associated with routes, and environmental sensitivities such as the receiving water environment, local air quality, biodiversity, European sites, and cultural heritage related sensitivities.	No. of actions implemented	Environment	NTA, TII, Bus Eireann, Active Travel, Travel and Transport Strategy	Adaptation	3, 11, 13, 14, 15	In progress
B10	Implement the LSMATS Strategy was prepared by the NTA in collaboration with Limerick City and County Council. The strategy aims to deliver a transport system for the region, which will enable it to become an environmentally sustainable and unified metropolitan unit use influence and control, as appropriate, to promote climate action co-benefits and development project conformance with planning and environmental protection requirements.	Modal split, Carbon reductions	NTA, TII	Transport Strategy	Adaptation	11	In progress

Ref.	Action	Tracking Measure	Lead	Partners	Impact	SDGs	Status
Objective: Increase the resilience of people, businesses and infrastructure to the effects of climate change							
B11	Support the implementation of the Shannon Estuary Taskforce Plan sets out recommendations for the delivery of up to 30GW of Atlantic Offshore Wind through the Estuary by 2050, and measures to maximise the industrial development opportunities arising from this whilst advocating and exerting influence to ensure supported projects promote climate action co-benefits and do not contravene relevant environmental protection criteria or cause significant negative environmental effects.	No. of actions implemented	Dept of Enterprise	SFPCO	Mitigation	7, 11	In progress
Objective: Implement measures to reduce carbon emissions from all council buildings by 51% by 2030 and to be net zero by 2050							
B12	Carryout an energy audit of Council properties to identify the scale of investments required to meet the required carbon reductions	No. of audits carried out	Facilities	SEAI	Adaptation	11	In progress
B13	Set out a roadmap to Decarbonise the council's building stock buildings through: A. Connection to District Heating B. Use of Heat Pumps & associated fabric improvements C. Use of other non-fossil fuels (e.g. Woodchip, Bio LPG)	Roadmap Developed	Facilities		Mitigation	11	In progress
B14	All buildings leased or bought by LCCC shall have an energy rating of A3 or better, as per SI 426 of 2014	No. of building leased by Council with a BER of A3	Corporate	Finance	Mitigation	11, 12	In progress
B15	Carry out an assessment of the renewable energy potential across the council's property portfolio to include buildings and land. Should include the potential to support EV roll out as well as local REC formation.	Feasibility Report Delivered	Facilities	Road Traffic and Cleansing	Mitigation	7	In progress
B16	Install maximum solar PV on appropriate LCCC owned corporate building whilst having due regard to environmental sensitivities (European sites, biodiversity, glint and glare impacts-built heritage).	No. of buildings with renewables installed	Facilities		Mitigation	7, 11	Not started
B17	Continue retrofitting Council owned social housing to reduce carbon emissions as well as addressing fuel poverty having due regard to environmental sensitivities such as local human receptors, European sites and biodiversity, and the need to appropriately protect and conserve protected structures in accordance with relevant protected structures regulations.	No. of houses retrofitted	Housing		Mitigation	7, 11	In progress
B18	Make applications to Pathfinder. Pathfinder is a programme operated by SEAI. It provides finance to achieve substantial energy savings by bundling similar large-scale projects together. It is operated by SEAI having due regard to environmental sensitivities such as biodiversity, European Sites and sensitive human receptors.	No. of applications made to SEAI	Facilities		Mitigation	7, 11	In progress

GOVERNANCE AND LEADERSHIP

Ref.	Action	Tracking Measure	Lead	Partners	Impact	SDGs	Status
Objective: Ensure that climate action is embedded in all Council actions, plans & policies							
G1	All staff training for new staff will include specific input on Climate Action and the understanding of climate change.	Annual Report	Human Resources	Corporate, Climate Action Team	Adaptation	13	Complete
G2	Deliver an education and awareness building programme for LCCC staff and Councillors	Annual Report	Climate Action Team	Corporate	Adaptation	13	In progress
G3	The Management Team Agenda shall include a progress update on implementation of the LACAP as a standing item on its monthly agenda.	monthly report	Corporate	Corporate	Adaptation	13	Complete
G4	Partner with the Climate Action Regional Office (CARO) Atlantic Seaboard South in implementing the LACAP	Annual Report	Climate Action Team	Corporate	Adaptation	13	Complete
G5	Quantify the carbon-footprint of staff and Councillors' business travel and explore setting a carbon budget for business travel.	Annual Report	Human Resources	Corporate	Adaptation	13	Not started
G6	Implement a methodology for carbon proofing major decisions, projects and strategies	No. of projects proofed for climate impact	Finance	Corporate	Adaptation	13	Not started
G7	Establish a clear set of KPI's to measure the progress to carbon neutrality	Annual Report	Climate Action Team	Corporate	Adaptation	13	In progress
G8	Develop a protocol to climate proof capital plans	Process template agreed and in place	Climate Action Team	Corporate	Adaptation	13	Not started
G9	Ensure that the Councils emergency plans are climate proofed.	Annual Report	Climate Action Team	Corporate	Adaptation	13	Not started
Objective: Ensure that key stakeholders are actively engaged and involved in implementing climate action initiatives across the county.							
G10	Establish a number of implementation teams across the Council to champion climate action across the council.	Team is Active	Climate Action Team	Corporate	Adaptation	13	In progress
G11	Establish a public-sector forum with key state agencies across limerick to deliver on the ambitions of this plan						Not started
G12	Continue to participate in and maximise the benefits of EU-funded environmental and climate-related European Projects.	Annual Report	EU Projects	Climate Action Team	Adaptation	13	In progress

G13	Use the Decarbonisation Zone to engage stakeholders in innovative actions, using pilot projects designed to reduce emissions.	No. of projects commenced	Climate Action Team	Corporate	Adaptation	13	In progress
G14	Ensure Climate Action pilot projects are inclusive and driven at community level.	All projects are mapped	Climate Action Team	Corporate	Adaptation	13	In progress
Ref.	Action	Tracking Measure	Lead	Partners	Impact	SDGs	Status
Objective: Ensure that the adequate resources, structures and processes are in place to support accountability, transparency and delivery with regards to climate action							
G15	Establish a reporting and monitoring system to track the progress of the climate actions.	Annual Report	Climate Action Team	Corporate	Adaptation	13	In progress
G16	Establish a Steering Group with representatives of key stakeholder groups to oversee plan implementation.	Steering Group Established	Corporate	Climate Action Team	Adaptation	13	Not started
G17	Adopt and implement the Green Public Procurement Strategy.	Steering Group Established	Corporate	Climate Action Team	Adaptation	13	Not started

DRAFT

COMMUNITY AND PARTNERSHIP

Ref.	Action	Tracking Measure	Lead	Partners	Impact	SDGs	Status
Objective: Actively engage with communities on Climate Action Initiatives that impact them							
C1	Deliver an education and awareness building programme which includes a suite of engagement tools to support community capacity building	No. of engagement tools developed	Climate Action Team	Digital Strategy	Adaptation	2, 3, 10, 13	In progress
C2	Increase participation in the Green-Schools programme in Limerick City and County	No. of Schools in the programme	Climate Action Team	Environment	Adaptation	13	In progress
C3	Create a new Citizen Innovation lab on the Innovative Limerick campus with the support of the URDF funding.	Development of the space	Climate Action Team		Adaptation	13	In progress
C4	Develop a new digital platform for the Citizen Innovation Lab that can actively support and enable communities to collaborate and activate their Climate Action Plans	Development of digital platform	Digital Strategy	Climate Action Team	Adaptation	13	Not started
Objective: Deliver an education and awareness building programme across the county that all communities can access							
C5	Deliver education and behaviour change campaigns to encourage reduction in food waste and reducing, reusing and recycling residual waste	No. of Campaigns Developed	Climate Action Team	Environment, Regional Waste Management Agency	Adaptation	2, 11, 13	In progress
Objective: Deliver an education and awareness building programme across the county that all communities can access							
C6	Develop Cultural, social, recreational & environmental initiatives to promote integration of different cultural communities into implementation of climate action initiatives	No. of Initiatives Delivered	Climate Action Team	Rural Community and Culture Development	Adaptation	3, 13	In progress

C7	Complete the SMARTLABs SEAI supported project which supports up to 100 residents/property owners better understand their energy usage and promotes behavioural change to reduce overall energy consumption.	No. of Residents Taking Part	Climate Action Team	SEAI, University of Limerick	Adaptation	7, 11, 13	In progress
C8	Develop Group-based programmes and activities to build social and environmental inclusion.	No. of Programmes Developed	Climate Action Team	DECC	Adaptation	3, 13	In progress
C9	Utilise the facilities of the CIL and other programmes to encourage communities to form SECs. Facilitate project adherence to planning and environmental protection requirements.	No. of Interactions with Communities	Climate Action Team	SEAI	Adaptation	7, 11	In progress
Ref.	Action	Tracking Measure	Lead	Partners	Impact	SDGs	Status

Objective: Support communities to actively engage with the Climate crisis

C10	Create a Community SDG Dashboard for tracking community climate programs in limerick city and county	Delivery of the mapping tool	Climate Action Team		Adaptation	3, 13	Not started
C11	Continue to deliver on the Community Climate Action Fund	No. of projects Funded	Climate Action Team	CARO, DECC	Adaptation	3, 7, 11, 13	In progress
C12	Deliver Engagement programmes regarding funding opportunities and local development	No. of Events held	Climate Action Team	Community	Adaptation	13	In progress
C13	Utilise the Creative Climate Action Communities as a driver of community climate action	No. of projects Funded	Climate Action Team	Arts Office	Adaptation	3, 7, 11, 13	In progress
C14	Partner with community groups/ organisations/academic institutes (green schools) in designing amenities and services for them and involve them in the decision- making	No. of New Stakeholders activated	Climate Action Team	PAUL Partnership, Ballyhoura Development CLG, West Limerick Resources	Adaptation	3, 7, 11, 14	In progress

NATURAL ENVIRONMENT

Ref.	Action	Tracking Measure	Lead	Partners	Impact	SDGs	Status
Objective: Protect conserve, and enhance the County's biodiversity and heritage through the implementation of effective climate-related actions							
N1	A local Biodiversity Action Plan will set out measures to protect and enhance local biodiversity, including climate-relevant measures. Implement relevant actions of the national Bio-diversity Action Plan at local level having due regard to co-benefit opportunities such the maintenance and improvement of water quality in line with the aims of the Water Framework Directive, or the potential for increasing carbon sequestration levels.	Biodiversity Action Plan Delivered	Biodiversity Officer	Environment	Mitigation	13, 15	In progress
N2	Set targets to maintain existing woodlands in good condition and plant new native trees in urban and rural areas, subject to independent ecological assessment, to enhance carbon storage, biodiversity and landscape, air quality, and urban heat island mitigation.	No. of Areas Maintained	Environment	Biodiversity Officer	Mitigation	13, 15	In progress
N3	A wetland survey will inform the council strategy and planning documents and implement recommendations in terms of conservation and restoration of wetlands.	Completion of Survey	Environment	Biodiversity Officer	Mitigation	13, 15	In progress
N4	Develop a Local Food Growing Strategy and expand the number of community growing projects and support them with skills training, materials and capacity building.	Local Food Growing Strategy Delivered	Environment	Food Waste	Mitigation	2, 3, 11, 13	In progress
N5	Support the implementation of Marine Spatial Plan and to protect the Shannon estuary	Annual Report	Housing		Mitigation	7, 11	Not started
N6	Deliver a habitat protection and creation of new habitats, landscapes, hedgerows strategy having due regard to the need to appropriately protect, conserve and enhance important habitats and species and European sites, and support the maintenance and improvement of water quality in line with the aims of the Water Framework Directive. This plan shall be developed by a competent ecology team and shall have due regard to the need to appropriately manage these habitats.	Habitat Protection Strategy Delivered	Environment		Mitigation	13, 15	In progress
N7	Implement a policy to cease the use of chemical pesticides and herbicides across council operations	Policy Developed	Environment		Mitigation	13, 15	In progress

Ref.	Action	Tracking Measure	Lead	Partners	Impact	SDGs	Status
Objective: Protect conserve, and enhance the County's biodiversity and heritage through the implementation of effective climate-related actions							
N8	Carry out ecological/habitat surveys and highlight areas at risk and those suitable for ecological restoration and, where appropriate, enhanced carbon storage	Survey Completed	Environment	Climate Action Team	Mitigation	13, 15	In progress
N9	Create and maintain pollinator-friendly habitats based on most up to date scientific advice from AIPP.	No. of Active Pollinators	Environment	Climate Action Team	Mitigation	13, 15	In progress
N10	Work with Irish Water and LAWPRO (Local Authority Water Programme) to identify the impacts of critical and vulnerable receptors in accordance with the River Basin Management Plan and Water Framework Directive	No. of Meetings Held	Environment	Climate Action Team	Mitigation	13	In progress
Objective: A safe and healthy environment that is resilient to the effects of climate change							
N11	Identify urban areas, towns and villages to be greened (tree planting, pollinators, community gardens, sensory gardens, allotments natural play areas) using native species.	No. of Areas Identified	Environment	Planning	Mitigation	3, 11, 13	In progress
N12	Investigate community tree-planting and biodiversity enrichment programmes (Mini-Forest initiatives) using native species.	No. of Mini Forests Developed	Environment		Mitigation	13, 15	In progress
N13	Support Citizen Science projects that target our natural environment	No. of Projects Support	Environment		Mitigation	13, 14, 15	In progress
N14	Create Engagement Sessions for communities on how to develop their Town/Village Biodiversity Plans	No. of Sessions Held	Climate Action Team	Rural, Community and Culture Development, PAUL Partnership, Ballyhoura Development CLG, West Limerick Resources	Mitigation	11, 13, 14, 15	In progress
N15	Meet annual inspection targets as per EPA National Agriculture Inspection Plan while ensuring sustainable transport modes are used to travel to and from inspection sites, where feasible	No. of Targets met	Environment		Mitigation	13	In progress
N16	Undertake and expand upon air quality monitoring capabilities	Delivery of Expansion Programme	Environment		Mitigation	13	In progress

Ref.	Action	Tracking Measure	Lead	Partners	Impact	SDGs	Status
Objective: A safe and healthy environment that is resilient to the effects of climate change							
N17	Enable improvements in air quality through inspections of fuel suppliers to address unauthorised sale of unapproved solid fuels	No. of Inspections held	Environment		Mitigation	13	In progress

ENVIRONMENT AND CIRCULAR ECONOMY

Ref.	Action	Tracking Measure	Lead	Partners	Impact	SDGs	Status
Objective: Reduce waste from the Limerick City and County Council operations and actively promote waste minimisation policies							
E1	Investigate the development of composting centres to promote circularity of green waste having due regard to planning and environmental considerations and constraints.	No. of Composting Facilities Delivered	Environment		Adaptation	11, 13	In progress
E2	Implement the national waste management plan for a circular economy at a local level. These include addressing the following targets - 60% of all waste to be recycled by 2030, a 50% reduction in food waste by 2030, 70% of construction waste to be recycled	% of Waste Recycled	Environment	Regional Waste Management Office	Adaptation	12, 13	In progress
E3	Include technologies to improve water efficiency within LA buildings (such as rainwater harvesting, grey water systems, flow regulators, water efficient toilets and showerheads).	% of Water Consumption Reduced	Environment	Facilities	Mitigation	6, 11, 12	In progress
E4	LA own developments seek where feasible to re-use materials and/or use/support innovative low-carbon materials/building techniques	Policy Developed	Corporate		Mitigation	9, 11, 12, 13	In progress
E5	Integrate Nature Based Solution, including biodiversity and water protection measures, into Local Authority Own Developments including public realm/Section 38 and Active Travel initiatives	No. of Developments incorporating Nature Based Solutions	Environment	All Departments	Mitigation	11, 12, 13	In progress
E6	Promote efficient water use by businesses and the wider community and create a business case for rainwater capture	Business Case Delivered	Environment	Chamber of Commerce	Mitigation	6, 13	Not started
E7	Explore initiatives to significantly reduce the quantity of single-use plastics used in LCCC premises and wider commercial establishments.	% Reduction of Single Use Plastics	Environment	Regional Waste Management Agency	Mitigation	12, 13	In progress
E8	Promote waste minimisation and sustainability into the event licencing and casual trading processes	Policy Guidance published	Environment	Regional Waste Management Agency	Mitigation	12, 13	In progress

E9	The development of the Opera Site by Limerick 2030 DAC will undertake a number of initiatives to demonstrate best practice in minimisation of waste.	Annual Report	Limerick 2030 DAC	Regional Waste Management Agency	Mitigation	9, 11	In progress
E10	Introduce a programme of actively managing waste in all LCCC buildings	Waste Policy Developed	Facilities	Environment	Mitigation	12, 13	In progress
E11	Prepare an updated noise action plan	Plan is Implemented	Environment		Adaptation	11, 13	Complete

DRAFT

