

Active Travel Limerick

Annual Review

Report 2024



Comhairle Cathrach
& Contae **Luimnigh**

Limerick City
& County Council



NTA

Údarás Náisiúnta Iompair
National Transport Authority



limerick.ie

EXECUTIVE SUMMARY

Section 1

Limerick Metropolitan North Municipal District

Section 2

Limerick Metropolitan West Municipal District

Section 3

Limerick Metropolitan East Municipal District

Section 4

Limerick Newcastle West Municipal District

Section 5

Limerick Cappamore Kilmallock Municipal District

Section 6

Limerick Adare Rathkeale Municipal District

Section 7

Limerick City and County Council Bus Programme

EXECUTIVE SUMMARY

This annual review provides a summary of the Active Travel projects delivered through construction throughout Limerick City and County in 2024.

The overall spend within Active Travel for Limerick City and County Council for 2024 was €27.4 million. This funding has contributed to the provision of approximately 30km of refurbished and new footpaths since 2022.

Limerick Shannon Metropolitan Area Transport Strategy has set out an ambitious plan for cycle network in Limerick City, to date Active Travel have delivered 17.5km of this network.

The delivered 2024 Active Travel projects are presented in this report. Each project sheet contains project location and cost, the projects represent an investment in sustainable travel to encourage and increase participation in active travel mobility across both the urban and rural population in the county.

Installation is complete on micro- radars throughout the City. This technology is an investment in Limerick City and a useful tool in providing analysis into the future on the transport choices used by Limerick citizens. Limerick City and County Council Digital Strategy Section will now commence the next phase of this project in terms of data validation and research.

Throughout the year of 2024 Active Travel Section have published fortnightly newsletters and sought out the opinions of community groups, elected members, accessibility groups, one-to-ones; and held both statutory and non-statutory consultation. This engagement has assisted the department in delivering sustainable travel projects through Limerick City and County.

Limerick City and County's progression through the Safe Routes to School Programme continues in City and County with 9 completed schemes delivered to the end of 2024.

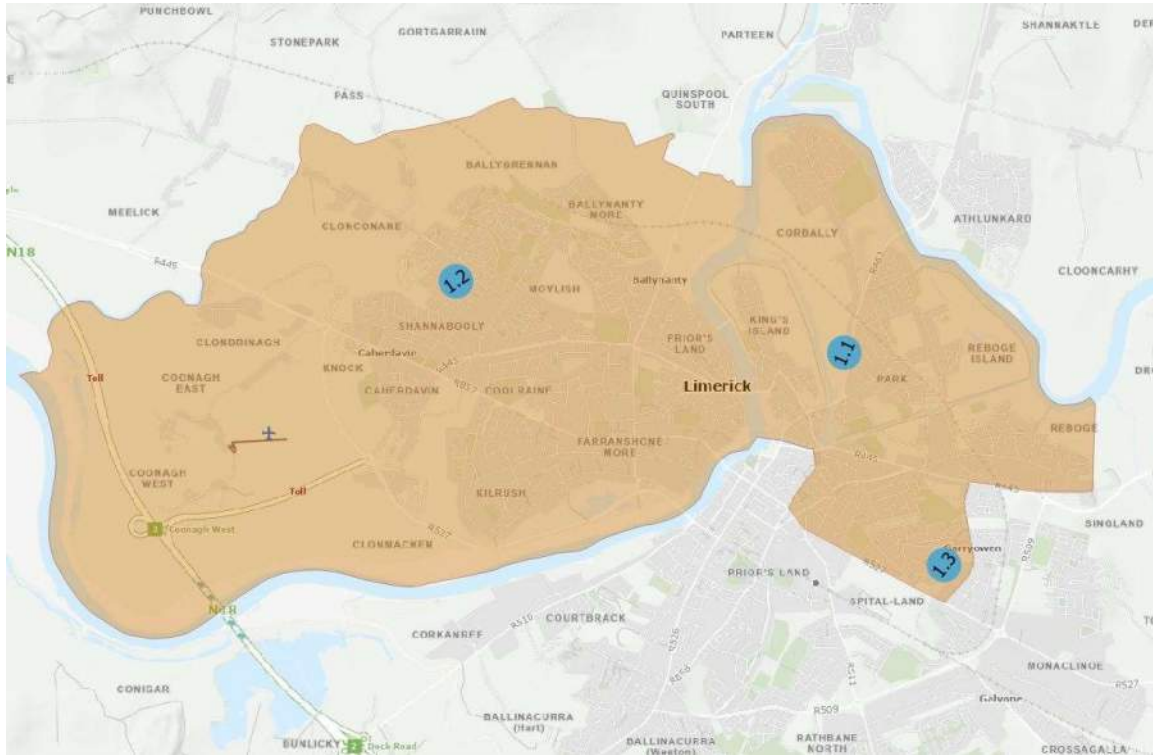
Along with the Environment Department air quality monitoring continues at various locations around the city. This monitoring is measure of nitrogen dioxide (NO₂) levels. NO₂ is primarily released into the air from the burning of fuel, forming from the emissions of cars, trucks, buses and other similar vehicles.



SECTION ONE

Limerick Metropolitan North
Municipal District

LIMERICK METROPOLITAN NORTH MUNICIPAL DISTRICT



- 1.1 Janemount Park, Corbally
- 1.2 Walnut Drive, Caherdavin
- 1.3 Fairgreen, Singland

Project Reference 1 **Project Location** JANEMOUNT PARK, CORBALLY

Project Description T&V Metro Footpath Improvement Scheme

Location

Project Category



	Pedestrian Facilities <input checked="" type="checkbox"/>		Cycle Facilities <input type="checkbox"/>
	Pedestrian And Cycle Facilities <input type="checkbox"/>		Features <input type="checkbox"/>

Project Overview

The scheme comprised of footpath refurbishment in College Park/Janemount Park Corbally. The refurbishment is connecting the highly populated housing estate to the city centre bus stop while providing a link to the secondary school and shops. Improvement works were required to bring these footpaths up to the necessary DMURS standards.

Project Cost €130,507.98

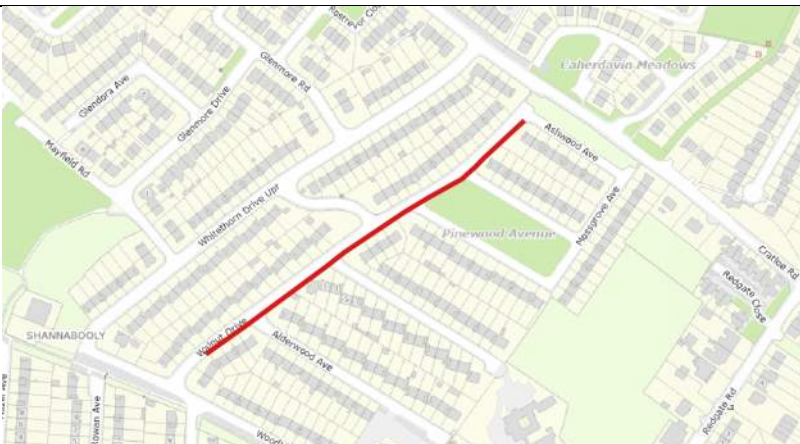



Project Reference	2	Project Location	WALNUT DRIVE, CAHERDAVIN
--------------------------	----------	-------------------------	---------------------------------

Project Description	T&V Metro Footpath Improvement Scheme
----------------------------	--

Location

Project Category



	Pedestrian Facilities <input checked="" type="checkbox"/>		Cycle Facilities <input type="checkbox"/>
	Pedestrian And Cycle Facilities <input type="checkbox"/>		Features <input type="checkbox"/>

Project Overview

The junction tightening work comprised of widening of existing footpaths and installation of tactile paving at crossing points to improve connectivity within the estate to local amenities.

Project Cost	€86,725.00
---------------------	-------------------



Project Reference

3

Project Location

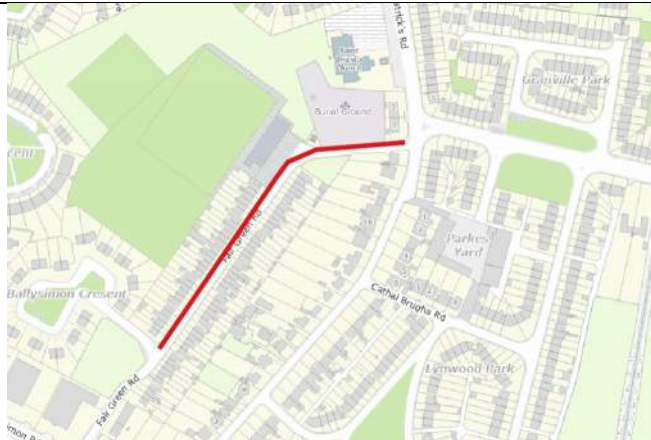
FAIRGREEN, SINGLAND




Project Description

T&V Metro Footpath Improvement Scheme

Location

Project Category



	Pedestrian Facilities <input checked="" type="checkbox"/>		Cycle Facilities <input type="checkbox"/>
	Pedestrian And Cycle Facilities <input type="checkbox"/>		Features <input type="checkbox"/>

Project Overview

Works include junction tightening, widening and upgrading of an existing footpath to DMURS standards along the Fairgreen Road, Singland as part of a new Active Travel measure to introduce a new one-way system to the area. It also included a new shared surface between Fairview Rangers and St Patrick's Roads. The newly improved footpath link provides pedestrian access to Fairview Rangers FC from St Patrick's Road and surrounding estates. Also improving local access to the bus stop on St Patrick's Road.

Project Cost

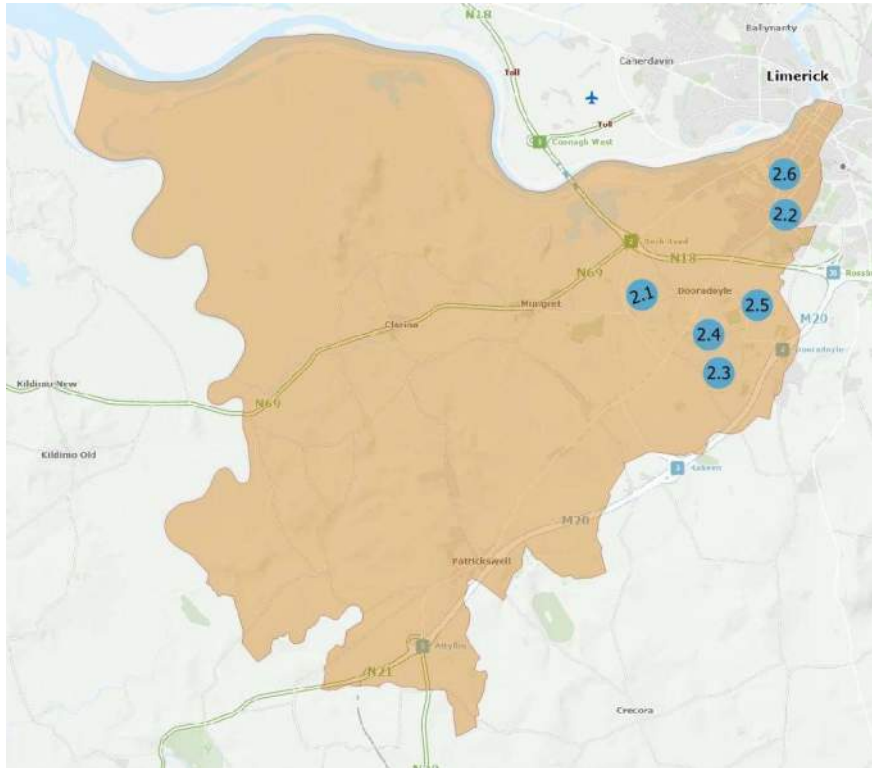
€ 99,880.00

Before	After
	
	

SECTION TWO

Limerick Metropolitan West
Municipal District

LIMERICK METROPOLITAN WEST MUNICIPAL DISTRICT



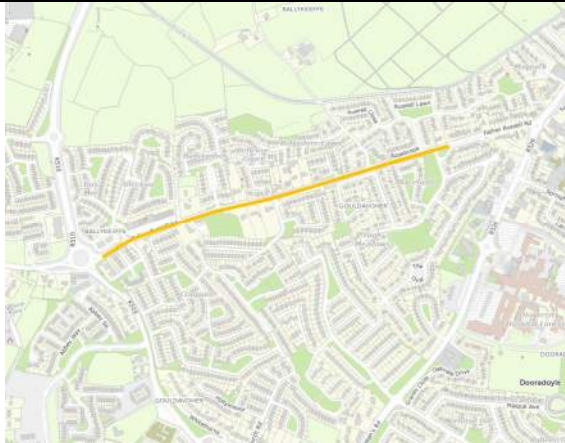
- 2.1 Father Russell Road Cycle Scheme
- 2.2 Childers Road (Greenpark to Hyde Road)
- 2.3 Ballycummin Road Pedestrian Crossing
- 2.4 Avonmore Rd, Raheen
- 2.5 Safe Routes to School - Crescent College Comprehensive
- 2.6 Safe Route to School Laurel Hill Ave (South Circular Road)

Project Reference 1





Project Location FATHER RUSSELL ROAD CYCLE SCHEME

Project Description Active Travel Cycle Scheme

Location



Project Category

 Pedestrian Facilities <input type="checkbox"/>	 Cycle Facilities <input type="checkbox"/>
 Pedestrian And Cycle Facilities <input checked="" type="checkbox"/>	 Features <input type="checkbox"/>

Project Overview

Provision of new and upgraded pedestrian crossing point; cycle infrastructure in both directions is significant element in providing safer travel for vulnerable road users. The project connects three primary schools; one secondary school and community facilities.

Project Cost

€3,653,309.26



Project Reference

2

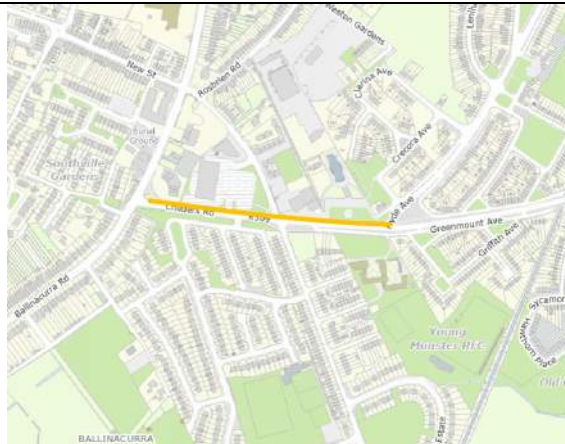
Project Location

CHILDERS ROAD (GREENPARK TO HYDE ROAD)

Project Description

Active Travel Cycle Scheme

Location



Project Category



Pedestrian Facilities



Cycle Facilities



Pedestrian And Cycle Facilities



Features

Project Overview

The bi-directional cycle lane gives connectivity from Hyde Road to Greenpark Junction. This works complete another piece of the LSMATS cycle network for Limerick City.

Project Cost

€1,009,275.00

Before



After



Project Reference

3

Project Location

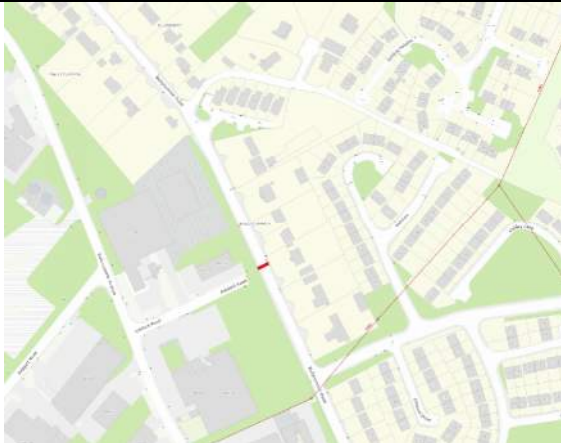
BALLYCUMMIN ROAD PEDESTRIAN CROSSING

Project Description

Pedestrian Crossing

Location

Project Category



Pedestrian Facilities



Cycle Facilities



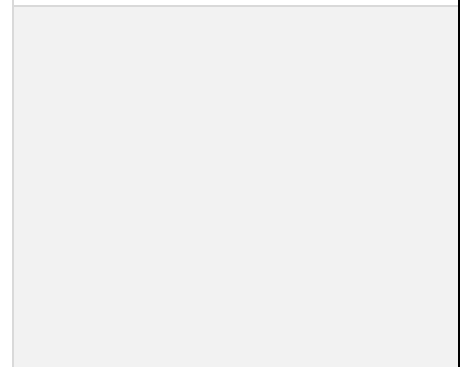
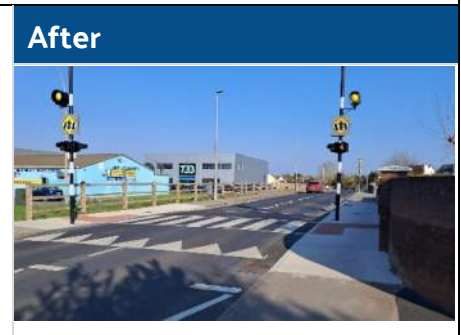
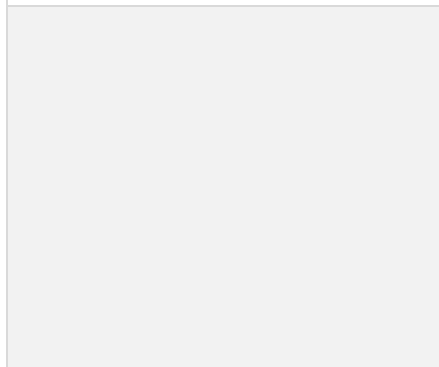
Pedestrian And Cycle Facilities



Features

Project Overview

The scheme installed a raised pedestrian crossing on the Ballycummin road, Raheen. The necessity of a safe controlled pedestrian crossing point on Ballycummin road was greatly required to provide a suitable crossing point, to promote Active Travel and the use of public transport for pedestrians accessing the entrance to Raheen Business Park, local gym & amenities, the adjacent bus stops on Ballycummin Road and the large number of nearby residential housing estates.



Project Cost

€ 49,999.02

Project Reference 4





Project Location AVONMORE ROAD, RAHEEN

Project Description T&V Metro Footpath Improvement Scheme

Location



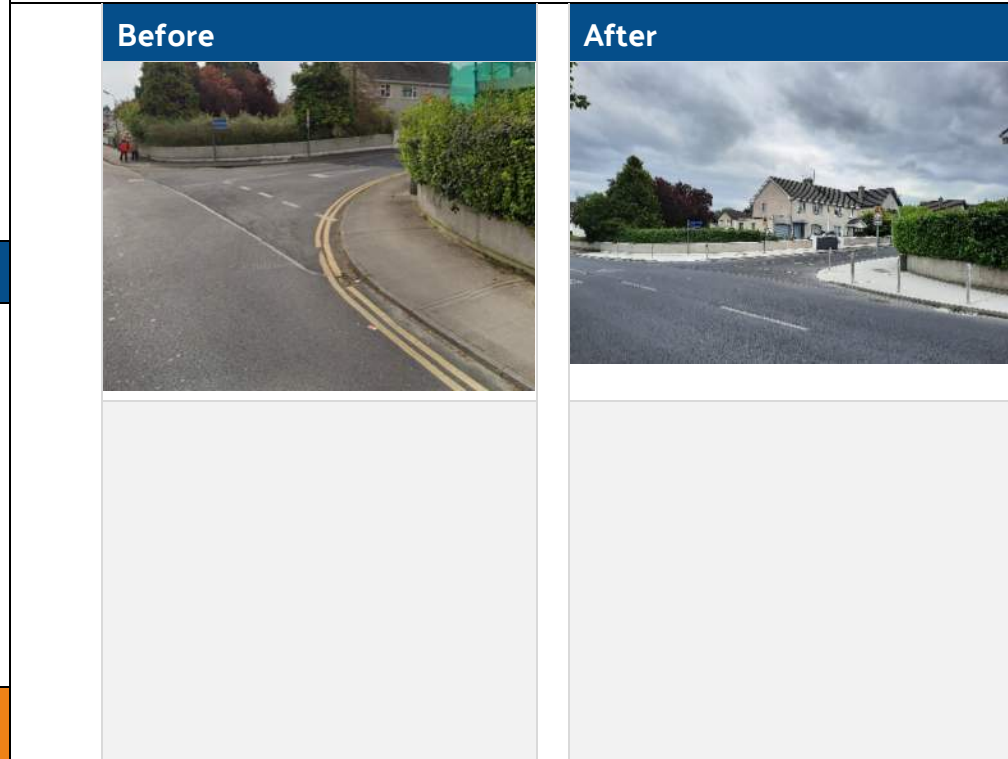
Project Category

	Pedestrian Facilities <input checked="" type="checkbox"/>		Cycle Facilities <input type="checkbox"/>
	Pedestrian And Cycle Facilities <input type="checkbox"/>		Features <input type="checkbox"/>

Project Overview

This scheme comprised of an upgraded footpath in Avonmore Road, Raheen. This upgrade completed previous good work in this area over recent years. This included the remaining side of Avonmore side left to complete to finish the crucial Active Travel link between Mulcair Road and St. Nessans Road.

Project Cost € 74,271.14



Project Reference

5

Project Location

CRESCENT COLLEGE COMPREHENSIVE

Project Description

Safe Routes to School

Location

Project Category



Pedestrian Facilities



Cycle Facilities



Pedestrian And Cycle Facilities



Features

Project Overview

The project includes a pedestrian priority junction with raised table and new footpath on the school avenue to facilitate better pedestrian connectivity.

Before



After



Project Cost

€ 72,271.14

Project Reference

6

Project Location

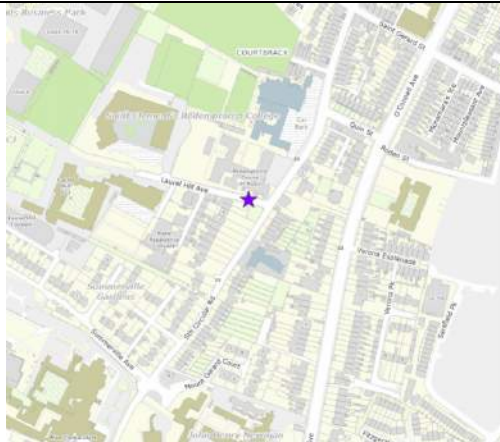
LAUREL HILL AVENUE

Project Description

Safe Routes to School

Location

Project Category



Pedestrian Facilities



Cycle Facilities



Pedestrian And Cycle Facilities



Features

Project Overview

Completed works consist of planted chicanes these prohibit parking on the footpaths and reduce traffic speed. These measures aim to promote walking and cycling to three Secondary Schools – Laurel Hill Secondary School, Laurel Hill Gaelcoláiste and St. Clement’s College.

Project Cost

€ 127,527.43

Before



After



SECTION THREE

Limerick Metropolitan East
Municipal District



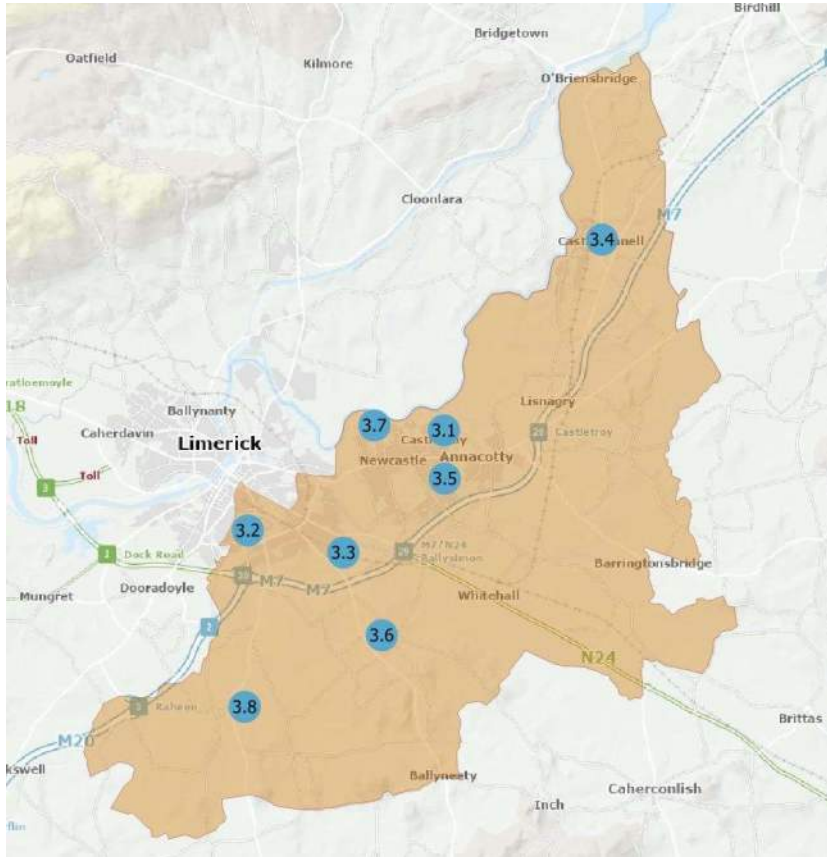
Comhairle Cathrach
& Contae **Luimnigh**
Limerick City
& County Council



NTA
Udarás Náisiúnta Iompair
National Transport Authority



LIMERICK METROPOLITAN EAST MUNICIPAL DISTRICT



- 3.1 Milford Plassy Park Junction Improvements
- 3.2 Childers Road (Hyde Road to Roxoborough Roundabout)
- 3.3 Ros Mor to Childers Road Active Travel Scheme - Phase 1
- 3.4 Castleconnell
- 3.5 Ashleigh Woods, Newtown
- 3.6 Drombanna Footpath Extension
- 3.7 College Court, Castletroy
- 3.8 R511 Scoil an Spioraid Naoimh

Project Reference 1 **Project Location** MILFORD PLASSEY PARK

Project Description Active Travel Junction Improvements

Location



Project Category

	Pedestrian Facilities <input type="checkbox"/>		Cycle Facilities <input type="checkbox"/>
	Pedestrian And Cycle Facilities <input checked="" type="checkbox"/>		Features <input checked="" type="checkbox"/>

Project Overview

Improvements to the road arrangements with signal junctions to Plassey Road/Plassey Park Road and Plassey Park Road/University Road junctions and the addition of dedicated pedestrian and segregated cycle crossing facilities, bus lanes including bus priority measures, junctions tightening, bus stops upgrades, road resurfacing, LED public lighting & surface water drainage works including SUDS measures.

Project Cost € 7,785,379



Project Reference

2

Project Location

CHILDERS ROAD (HYDE ROAD TO ROXBORO ROUNDABOUT)

Project Description

Active Travel Cycle Scheme

Location



Project Category



Pedestrian Facilities



Cycle Facilities



Pedestrian And Cycle Facilities



Features

Project Overview

Provision of a new two-way segregated cycle track, including both permeant and interim measures, from Hyde Road to Roxboro Roundabout.

Additionally, significant pedestrian improvements on the route, along with Safe Route to Schools at Our Lady Queen of Peace Primary School.

Project Cost

€ 2,658,358

Before



After



Project Reference 3





Project Location ROS MOR TO CHILDERS ROAD

Project Description Active Travel Scheme - Phase 1

Location



Project Category

 Pedestrian Facilities <input checked="" type="checkbox"/>	 Cycle Facilities <input type="checkbox"/>
 Pedestrian And Cycle Facilities <input type="checkbox"/>	 Features <input checked="" type="checkbox"/>

Project Overview

Provision of a new Roundabout at the entrance to the Ros Mór housing estate on the Old Cork Road in Limerick City. A new bus stop on the Limerick side also forms part of the scheme. Works also include Safe Routes to Schools elements at nearby Donoughmore National School.

Project Cost € 2,568,644

Before



After



Project Reference

4

Project Location

CASTLECONNELL

Project Description

T&V Metro New Footpath Scheme

Location

Project Category



Pedestrian Facilities



Cycle Facilities



Pedestrian And Cycle Facilities



Features

Project Overview

This scheme comprised of the installation of a new footpath, recessing property boundary and installation of Public Lighting in order to connect the National School with the village of Castleconnell. This route which used a lot by children commuting to/from school will also encourage additional people to walk to school by introducing a safer means. It also provides a new pedestrian access for locals in the area to access the local amenities.

Project Cost

€ 75,000.00

Before



After

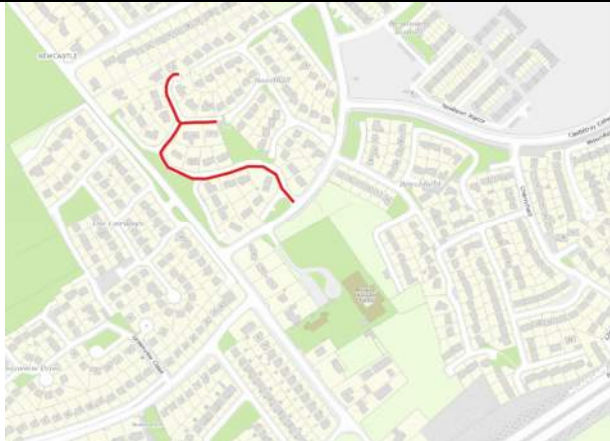


Project Reference 5

Project Location ASHLEIGH WOODS, NEWTOWN

Project Description T&V Metro Footpath Improvement Scheme

Location



Project Category

	Pedestrian Facilities <input checked="" type="checkbox"/>		Cycle Facilities <input type="checkbox"/>
	Pedestrian And Cycle Facilities <input type="checkbox"/>		Features <input type="checkbox"/>

Project Overview

This scheme comprised of an upgraded footpath in Ashleigh Woods, Newtown. This footpath upgrade to DMURS standards provided a safe pedestrian link in this area to encourage people to walk to the National School, GAA Club, Tennis Club, Credit Union, Church and other local amenities.

Project Cost € 75,000

Before



After



Project Reference

6

Project Location

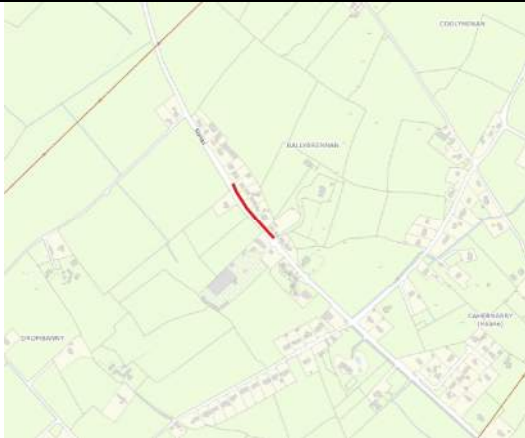
DROMBANNA





Project Description

T&V Metro New Footpath Extension Scheme

Location

Project Category



	Pedestrian Facilities <input checked="" type="checkbox"/>		Cycle Facilities <input type="checkbox"/>
	Pedestrian And Cycle Facilities <input type="checkbox"/>		Features <input type="checkbox"/>

Project Overview

The construction of an extended new footpath including, public lighting and improved drainage to DMURS standards in order to provide a safe walkway for pedestrians to access the new bus stop on the Ballyneety bound lane of the R512 and new pedestrian crossing near the Four Elms.. This extended safe pedestrian route and footpath to the new bus stop will also encourage people to use public transport and increase the number of people to walk to the nearby amenities.

Project Cost

€ 74,080.45



Project Reference 7





Project Location CASTLE COURT, CASTLETROY

Project Description Low Cost Permeability Measures

Location



Project Category

 Pedestrian Facilities <input checked="" type="checkbox"/>	 Cycle Facilities <input type="checkbox"/>
 Pedestrian And Cycle Facilities <input type="checkbox"/>	 Features <input type="checkbox"/>

Project Overview

This scheme comprises of the installation of a new footpath with increased width and vegetation removal, in order to provide a safe permeability route for students walking to / from the University of Limerick. It has also provided a safer route for pedestrians / students at night time.

Project Cost € 18,543.62

Before



After



Project Reference

8

Project Location

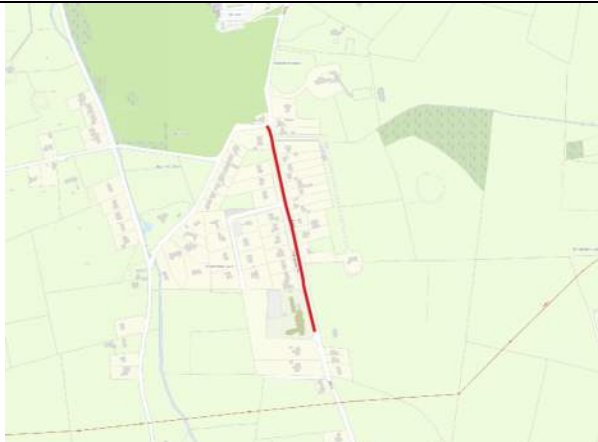
SCOIL SPIORAID AN NAOIMH

Project Description

T&V Metro New Footpath and Pedestrian Scheme

Location

Project Category



Pedestrian Facilities



Cycle Facilities



Pedestrian And Cycle Facilities



Features

Project Overview

The works provided a footpath along the front of school and provision for setdown area.

A raised pedestrian crossing and footpath was installed which connects settlements in the area to the school and promotes active modes to school.

Before



After



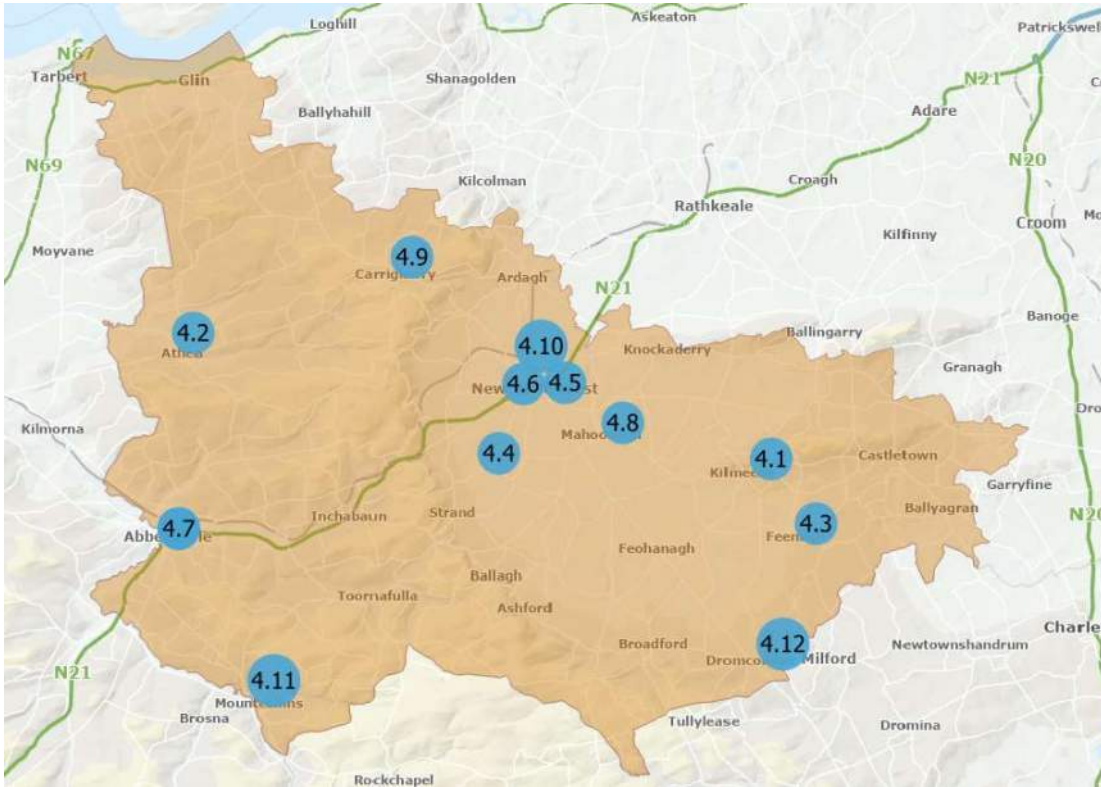
Project Cost

€ 123,299

SECTION FOUR

Limerick Newcastle West
Municipal District

LIMERICK NEWCASTLE WEST MUNICIPAL DISTRICT



- 4.1 Kilmeedy Village
- 4.2 Athea Village
- 4.3 Feenagh
- 4.4 Monagea
- 4.5 Athletics Hub R522 to Greenway
- 4.6 Sheehans Road, Newcastle West
- 4.7 Abbeyfeale
- 4.8 Castlemahon
- 4.9 Carrigerry
- 4.10 Cois Teampaill, Newcastle West
- 4.11 Mountcollins
- 4.12 Safe Routes to School Hazelwood School

Project Reference 1





Project Location KILMEEDY VILLAGE

Project Description Footpath Improvement Scheme

Location

Project Category



	Pedestrian Facilities <input checked="" type="checkbox"/>		Cycle Facilities <input type="checkbox"/>
	Pedestrian And Cycle Facilities <input type="checkbox"/>		Features <input type="checkbox"/>

Project Overview

2024 works included the continuation of the footpaths along R519 and around the bend at its junction with LP1304, incorporating lighting and accommodation works.

Project Cost

€ 71,181.14

Before	After
	
	

Project Reference	2	Project Location	ATHEA
--------------------------	----------	-------------------------	--------------

Project Description **Footpath Improvement Scheme**

Location



Project Category

	Pedestrian Facilities <input checked="" type="checkbox"/>		Cycle Facilities <input type="checkbox"/>
	Pedestrian And Cycle Facilities <input type="checkbox"/>		Features <input checked="" type="checkbox"/>

Project Overview

Completion of accommodation works on R524 Listowel Road (44m) and Lower Athea road. Works include rotavation of lands, construction of masonry piers, railings and hedgerow, setting back parapet and extending culvert and public lighting.

Project Cost	€ 65,590
---------------------	-----------------



Project Reference 3




Project Location FEENAGH

Project Description Footpath Improvement Scheme / Pedestrian Crossing Scheme

Location



Project Category

 Pedestrian Facilities <input checked="" type="checkbox"/>	 Cycle Facilities <input type="checkbox"/>
 Pedestrian And Cycle Facilities <input type="checkbox"/>	 Features <input type="checkbox"/>

Project Overview

The 2024 works included the adjustment of the eircom box in the village to complete the concrete footpath construction. Placement of 2no traffic calming ramps at the National School with associated public lighting. Railing was completed near the church and the pedestrian crossing completed at National School.

Project Cost € 17,450

Before



After



Project Reference

4

Project Location

MONAGEA, NEWCASTLE WEST

Project Description

Low Cost Permeability Measures

Location



Project Category



Pedestrian Facilities



Cycle Facilities



Pedestrian And Cycle Facilities



Features

Project Overview

New footpath linking the National School with the GAA pitch. The scheme incorporated site clearance, new footpath, surface water drainage carrier pip underneath footpath with associated gullies, accommodation works, public lighting and adjustments to Eircom network.

Project Cost

€ 172,171.77

Before



After



Project Reference

5

Project Location

ATHLETICS HUB R522 TO GREENWAY

Project Description

Limerick Greenway Connections

Location

Project Category



Pedestrian Facilities



Cycle Facilities



Pedestrian And Cycle Facilities



Features

Project Overview

New footpath installed to connect the Athletics Hub to the Limerick Greenway on Station Road including site clearance and surface water drainage. The accommodation works included masonry panelled fencing with planting to front and rear.

Before



After



Project Cost

€ 126,137.17

Project Reference

6

Project Location

SHEEHANS ROAD, NEWCASTLE WEST

Project Description

Junction Tightening

Location

Project Category



Pedestrian Facilities



Cycle Facilities



Pedestrian And Cycle Facilities



Features

Project Overview

Junction tightening works along Sheehans Road.
The junctions were tightened with the installation of tactile paving.

Project Cost

€ 32,501.86

Before



After



Project Reference

7

Project Location

ABBEYFEALE

Project Description

Junction Tightening

Location

Project Category



Pedestrian Facilities



Cycle Facilities



Pedestrian And Cycle Facilities



Features

Project Overview

Junction tightening works on New Street R524 to junctions at Listowel road R555 and Colbert Terrace. Works also carried out at the entrance to Grove Estate off St Ita's Road.

Tactile paving was incorporated at these junctions.

Before



After



Project Cost

€ 40,220.86

Project Reference 8





Project Location CASTLEMAHON VILLAGE

Project Description Footpath Improvement Scheme / Pedestrian Crossing Scheme

Location

Project Category



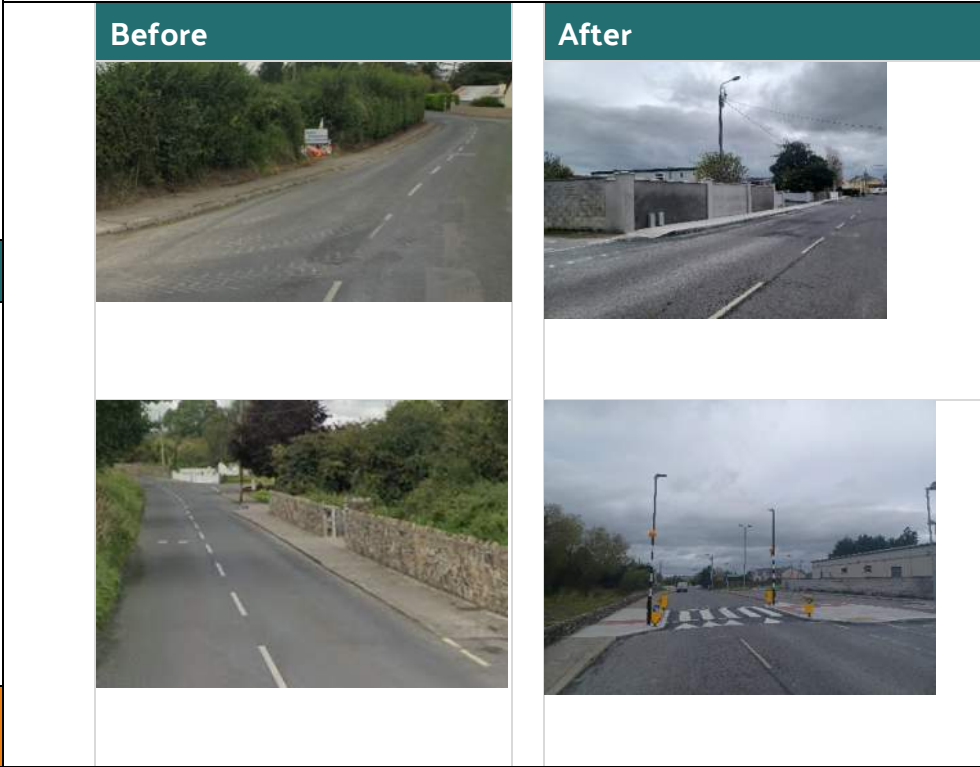
	Pedestrian Facilities <input checked="" type="checkbox"/>		Cycle Facilities <input type="checkbox"/>
	Pedestrian And Cycle Facilities <input type="checkbox"/>		Features <input type="checkbox"/>

Project Overview

The scheme involved works throughout the village to replace existing footpaths that were in very bad condition or too narrow with new wider footpaths. Resulting in direct footpath links between the church and cemetery to east of the village and between the school and the community centre on the west side.

Project Cost

€ 82,598.91



Project Reference 9





Project Location CARRIGKERRY

Project Description Footpath Improvement Scheme

Location

Project Category



	Pedestrian Facilities <input checked="" type="checkbox"/>		Cycle Facilities <input type="checkbox"/>
	Pedestrian And Cycle Facilities <input type="checkbox"/>		Features <input type="checkbox"/>

Project Overview

New 1.8m wide footpath installed from the main junction in village to the 50kph speed limit along L1224. A new surface water drainage system was installed outfalling into a nearby stream on R524. Site clearance with associated accommodation works.



Project Cost

€ 94,522

Project Reference

10

Project Location

COIS TEAMPAILL, NEWCASTLE WEST

Project Description

Footpath Improvement Scheme / Pedestrian Crossing Scheme

Location

Project Category



Pedestrian Facilities



Cycle Facilities



Pedestrian And Cycle Facilities



Features

Project Overview

New 2m wide footpath installed linking the Cois Teampail estate to the town with associated surface water drainage and public lighting. Works included site clearance, placement of new upgraded entrances, panelled fencing with hedgerow planting as agreed with landowner. Raised pedestrian crossing installed for traffic calming.

Project Cost

€ 72,432

Before



After



Project Reference 11





Project Location MOUNTCOLLINS VILLAGE

Project Description Footpath Improvement Scheme

Location

Project Category



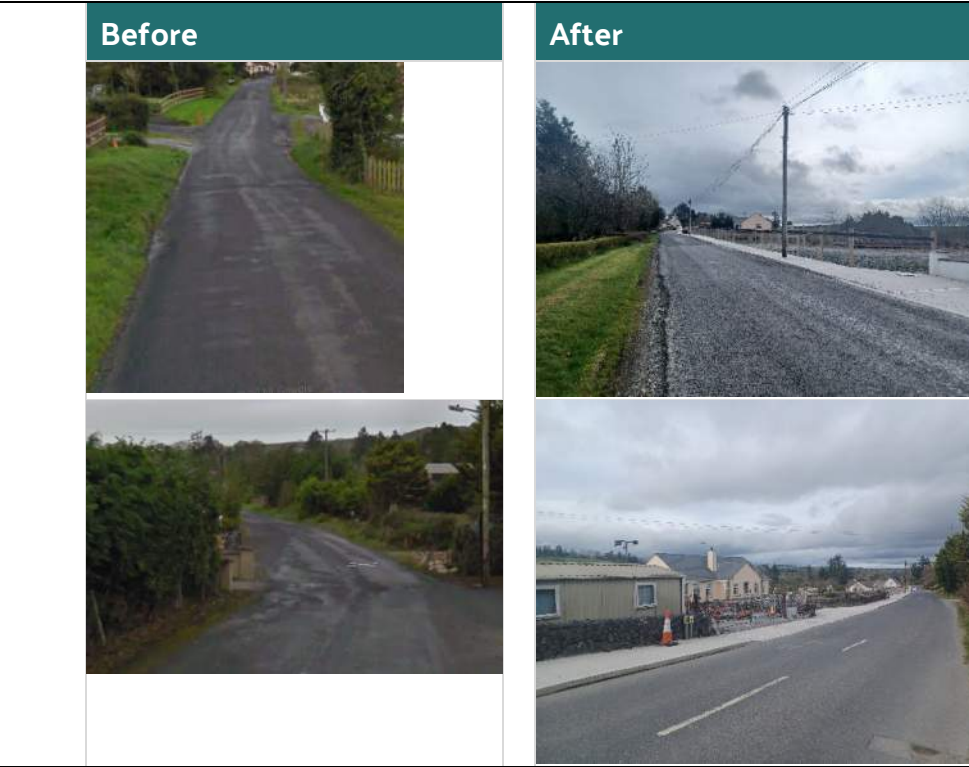
	Pedestrian Facilities <input checked="" type="checkbox"/>		Cycle Facilities <input type="checkbox"/>
	Pedestrian And Cycle Facilities <input type="checkbox"/>		Features <input type="checkbox"/>

Project Overview

Completion of the footpaths and accommodation works to GAA pitch LP1323 (2023 scheme). New footpaths, surface water drainage, public lighting, accommodation works along the LP1325 Abbeyfeale road for 250m.

Project Cost

€ 100,234



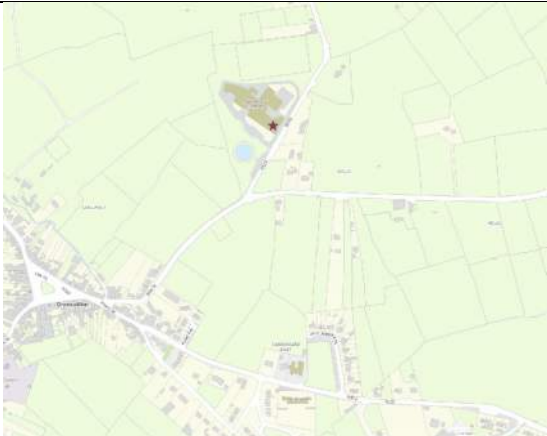
Project Reference 12





Project Location HAZELWOOD, DROMCOLLOGHER

Project Description Safe Routes To School

Location

Project Category



	Pedestrian Facilities <input checked="" type="checkbox"/>		Cycle Facilities <input type="checkbox"/>
	Pedestrian And Cycle Facilities <input type="checkbox"/>		Features <input type="checkbox"/>

Project Overview

This project include junction tightening between the R519 & R515 thereby reducing speed of vehicles in the area.
The school set down area is now a formalised one-way system and ducting installed for future public lighting.

Project Cost € 86,328.47



SECTION FIVE

Limerick Cappamore Kilmallock
Municipal District



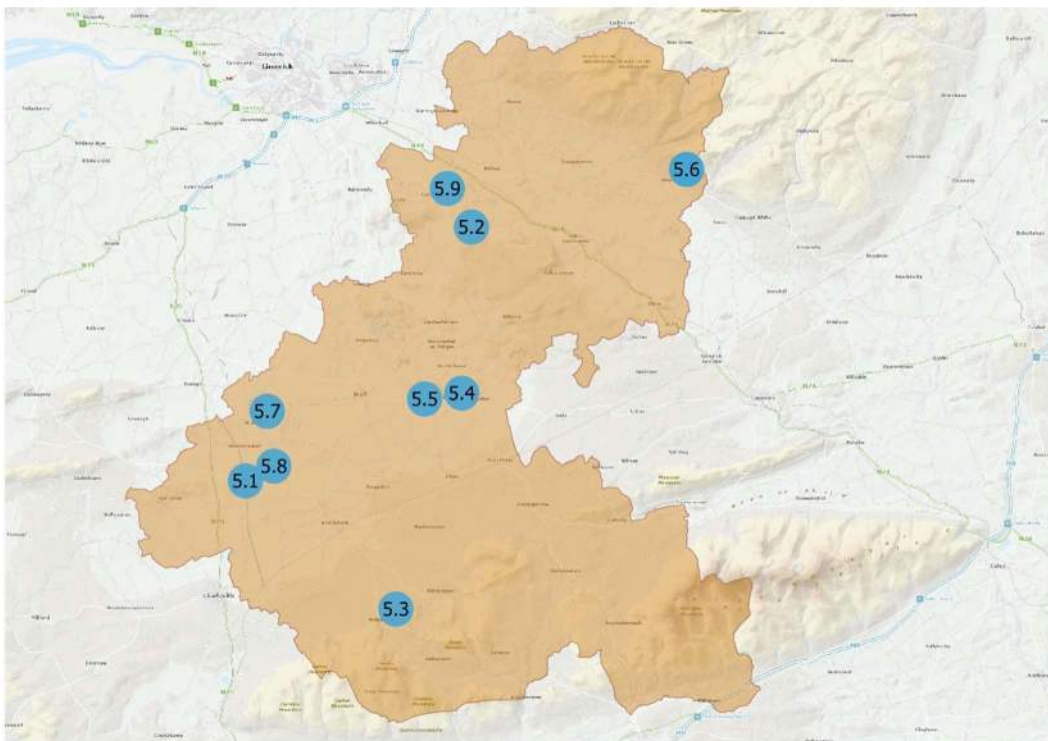
Comhairle Cathrach
& Contae **Luimnigh**
Limerick City
& County Council



NTA
Údarás Náisiúnta Iompair
National Transport Authority

ACTIVE TRAVEL
LIMERICK

LIMERICK CAPPAMORE KILMALLOCK MUNICIPAL DISTRICT



- 5.1 R518 Bruree
- 5.2 Caherline
- 5.3 Ardpatrick
- 5.4 Knockainey National School
- 5.5 Knockainey Village
- 5.6 R505 Doon
- 5.7 Athlacca
- 5.8 Áit Ailinn Estate to Toormore Estate, Bruree
- 5.9 Caherconlish Safe Routes to School

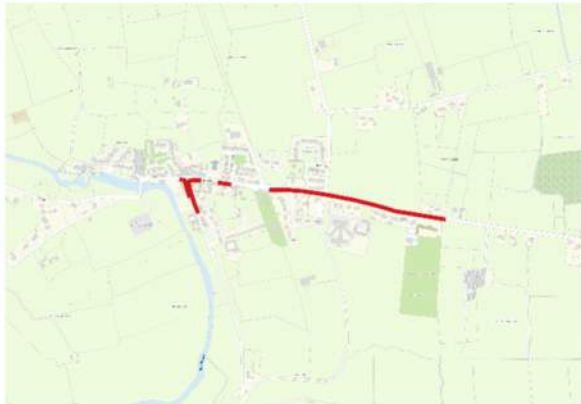
Project Reference 1





Project Location BRUREE R518

Project Description Footpath Improvement Scheme

Location

Project Category



 Pedestrian Facilities <input checked="" type="checkbox"/>	 Cycle Facilities <input type="checkbox"/>
 Pedestrian And Cycle Facilities <input type="checkbox"/>	 Features <input type="checkbox"/>

Project Overview

New and upgraded public footpaths and traffic calming measures on the R518. Installation of 3no new public lighting standards and upgrading of 9no existing lighting standards near Bruree National School. Installation of new surface water drainage system on sections of R518. Junction tightening and upgrades to 3no existing junctions in the village. Installation of 300m of new boundary fencing and the. Works also included the installation of three new flowerbeds for Bruree Tidy Towns.

Project Cost € 30,939.4



Project Reference

2

Project Location

CAHERLINE

Project Description

Footpath Improvement Scheme

Location

Project Category



Pedestrian Facilities



Cycle Facilities



Pedestrian And Cycle Facilities



Features

Project Overview

Installation of 860m² of new public footpath, new pedestrian crossing points, public lighting and corresponding drainage works. The works also included the surfacing of the main junction in Caherline and corresponding approaches to Caherline National School.

Project Cost

€ 200,376.33

Before



After



Project Reference 3





Project Location ARDPATRICK

Project Description Footpath Improvement Scheme

Location

Project Category



	Pedestrian Facilities <input checked="" type="checkbox"/>		Cycle Facilities <input type="checkbox"/>
	Pedestrian And Cycle Facilities <input checked="" type="checkbox"/>		Features <input type="checkbox"/>

Project Overview

Construction of 520 meters of new public footpath along with associated drainage works. The installation of ten new no. public lighting standards on the R512 and the installation of fourteen no. new public lighting standards on existing footpath linking National School to village. These works also included boundary works and uncontrolled crossing point at one no. junction and surfacing of one no. junction on R512 entering village.

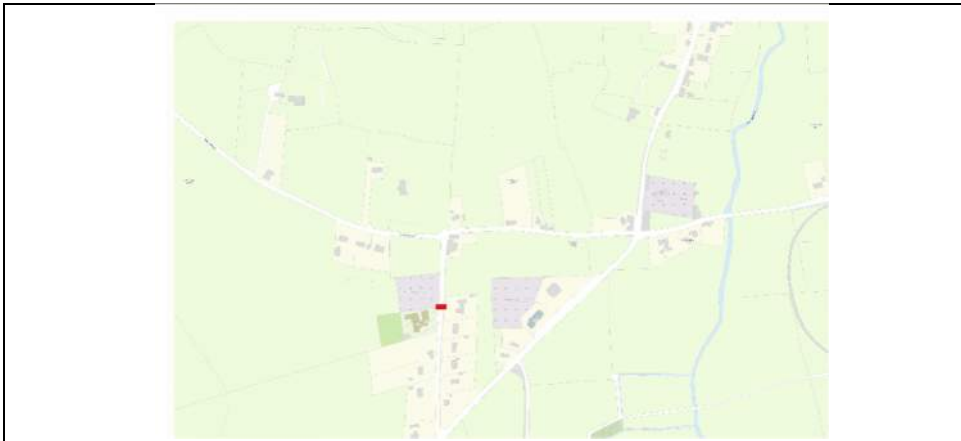
Project Cost € 250,000







Project Reference	4	Project Location	KNOCKAINEY NATIONAL SCHOOL
--------------------------	----------	-------------------------	-----------------------------------

Project Description	Pedestrian Crossing
----------------------------	----------------------------



Location	Project Category
-----------------	-------------------------



 Pedestrian Facilities <input type="checkbox"/>	 Cycle Facilities <input type="checkbox"/>
 Pedestrian And Cycle Facilities <input checked="" type="checkbox"/>	 Features <input type="checkbox"/>

Project Overview

Installation of new Zebra crossing at National School.

Before	After
	

Project Cost	€ 17,925.69
---------------------	--------------------

Project Reference

5

Project Location

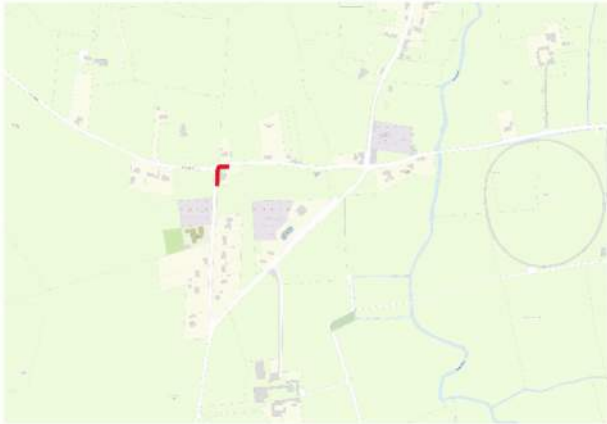
KNOCKAINEY VILLAGE

Project Description

Low Cost Junction Tightening Scheme Works

Location

Project Category



Pedestrian Facilities



Cycle Facilities



Pedestrian And Cycle Facilities



Features

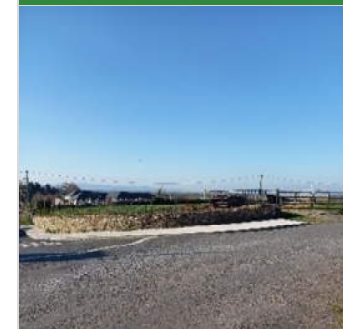
Project Overview

Installation of 400m² of new public footpath and junction tightening works at 1no. junction in addition to drainage works.

Before



After



Project Cost

€20,000

Project Reference 6


Project Location R505 DOON

Project Description Footpath Improvement Scheme / Pedestrian Crossing Scheme

Location

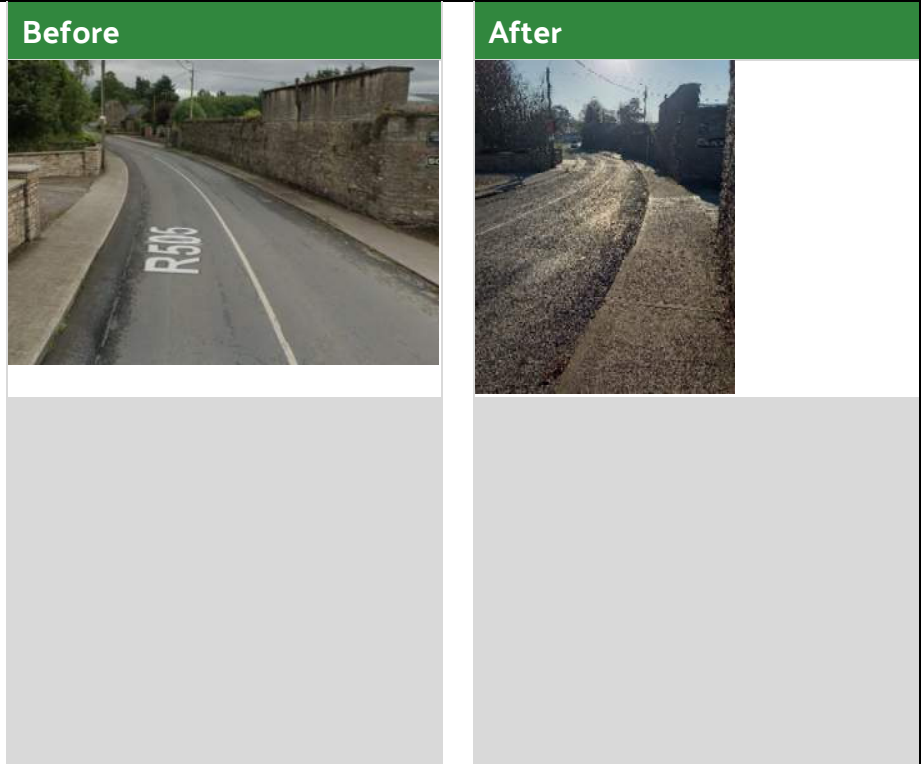
Project Category



 Pedestrian Facilities <input checked="" type="checkbox"/>	 Cycle Facilities <input type="checkbox"/>
 Pedestrian And Cycle Facilities <input type="checkbox"/>	 Features <input type="checkbox"/>

Project Overview

Installation of New Pedestrian Crossing and 120sq meters of public footpath.



Project Cost

€ 37,259.47

Project Reference 7





Project Location ATHLACCA

Project Description Footpath Improvement Scheme

Location

Project Category



 Pedestrian Facilities <input checked="" type="checkbox"/>	 Cycle Facilities <input type="checkbox"/>
 Pedestrian And Cycle Facilities <input type="checkbox"/>	 Features <input type="checkbox"/>

Project Overview

Installation of 500m² of new public footpath and junction tightening works at one no. junction in addition to drainage works.

Project Cost

€ 22,554.12



Project Reference

8

Project Location

AIT AILINN ESTATE TO TOORMORE ESTATE, BRUREE





Project Description

Footpath Improvement Scheme

Location

Project Category



	Pedestrian Facilities <input checked="" type="checkbox"/>		Cycle Facilities <input type="checkbox"/>
	Pedestrian And Cycle Facilities <input type="checkbox"/>		Features <input type="checkbox"/>

Project Overview

Installation of new road markings and mini roundabout at junction within estate and installation of safety measures on existing footpath linking two estates to improve safety of pedestrians and cyclists.

Before



After



Project Cost

€ 5,603.79

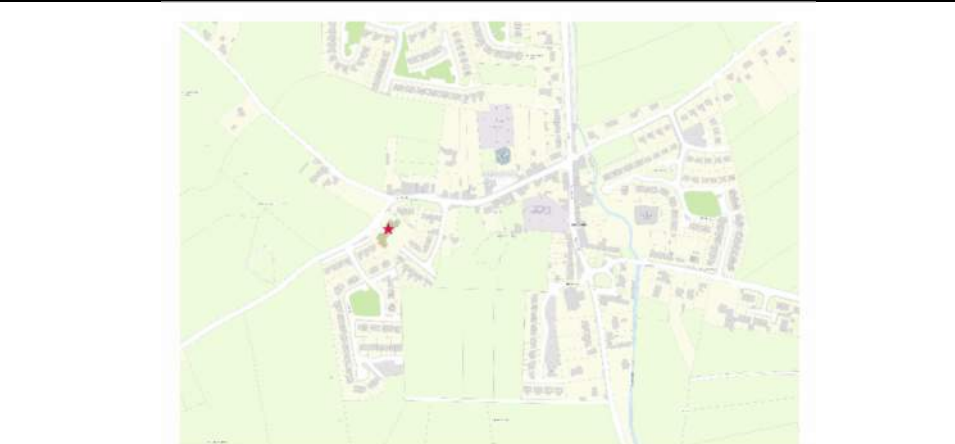
Project Reference 9





Project Location CAHERCONLISH NATIONAL SCHOOL

Project Description Safe Routes To School

Location

Project Category



	Pedestrian Facilities <input checked="" type="checkbox"/>		Cycle Facilities <input type="checkbox"/>
	Pedestrian And Cycle Facilities <input type="checkbox"/>		Features <input type="checkbox"/>

Project Overview

Provide a new footpath at the front of school; new pedestrian crossing on High Street and junction tightening at Hillview Drive Estate. The work provides a connection between the church Park ‘n’ Stride to the school and complete a missing link in connecting a housing estate to the village.



Project Cost

€104,265.47

SECTION

SIX

Limerick Adare Rathkeale
Municipal District



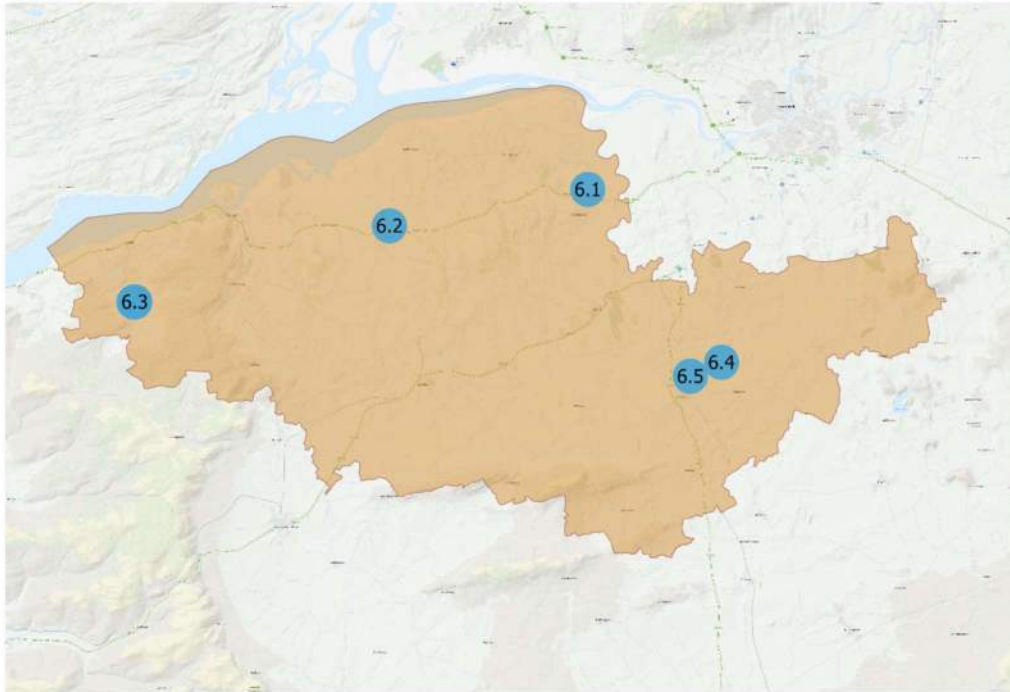
Comhairle Cathrach
& Contae Luimnigh
Limerick City
& County Council



NTA
Údarás Náisiúnta Iompair
National Transport Authority



LIMERICK ADARE RATHKEALE MUNICIPAL DISTRICT



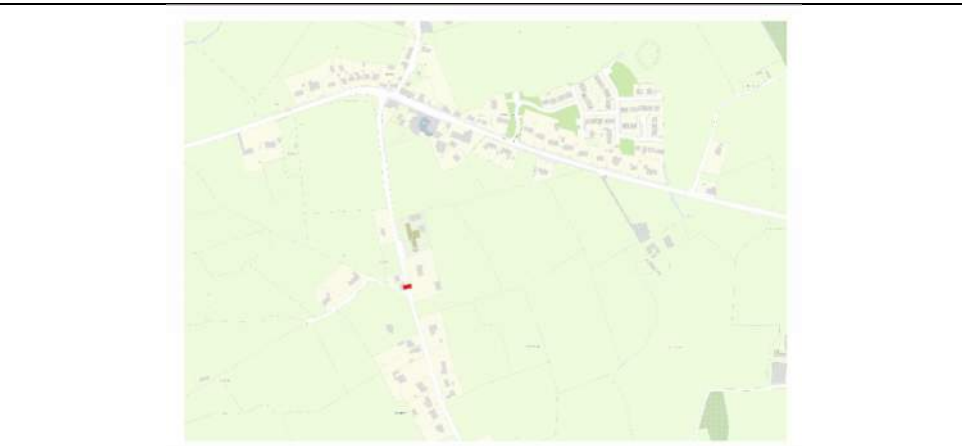
- 6.1 Kildimo
- 6.2 Askeaton National School
- 6.3 Ballyhahill Cross
- 6.4 Hospital Road, Croom
- 6.5 St. Senan's Terrace, Croom





Project Reference	1	Project Location	KILDIMO NS
--------------------------	----------	-------------------------	-------------------

Project Description	New Pedestrian Crossing
----------------------------	--------------------------------

Location

Project Category



	Pedestrian Facilities <input checked="" type="checkbox"/>		Cycle Facilities <input type="checkbox"/>
	Pedestrian And Cycle Facilities <input type="checkbox"/>		Features <input type="checkbox"/>

Project Overview

Provision of a new pedestrian crossing to facilitate children walking and cycling to school.

Before



After



Project Cost	€ 35,123
---------------------	-----------------





Project Reference	2	Project Location	ASKEATON NS
--------------------------	----------	-------------------------	--------------------

Project Description	Pedestrian Crossing Upgrade
----------------------------	------------------------------------

Location

Project Category



	Pedestrian Facilities <input checked="" type="checkbox"/>		Cycle Facilities <input type="checkbox"/>
	Pedestrian And Cycle Facilities <input type="checkbox"/>		Features <input type="checkbox"/>

Project Overview

Askeaton National School Pedestrian Crossing Upgrade.
 The existing uncontrolled crossing at the school has been upgraded to a controlled crossing (Zebra) with associated advance line markings. These works benefit both school and village community.

Before



After



Project Cost	€ 40,000
---------------------	-----------------

Project Reference 3





Project Location BALLYHAHILL CROSS

Project Description Low Cost Junction Tightening Scheme

Location

Project Category

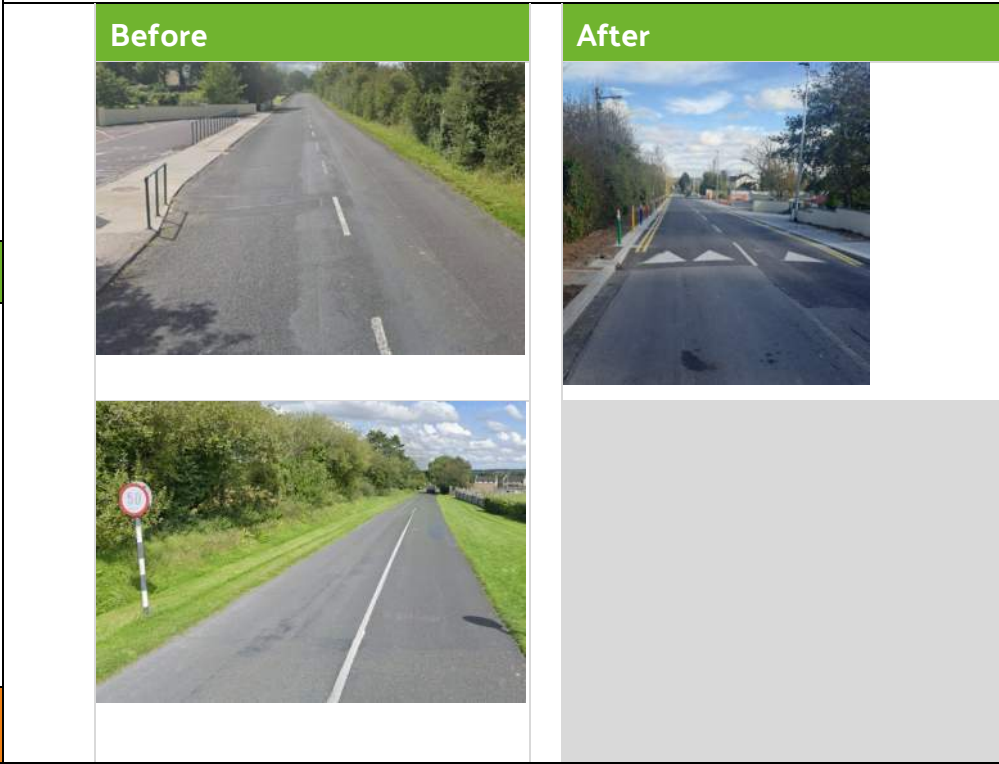


 Pedestrian Facilities <input checked="" type="checkbox"/>	 Cycle Facilities <input type="checkbox"/>
 Pedestrian And Cycle Facilities <input type="checkbox"/>	 Features <input type="checkbox"/>

Project Overview

Construction and extension of footpath connectivity from National School in western direction to 50 kph speed limit. This facilitates pedestrian movements and improves connectivity to the village centre, including links to Fortfield Estate. Drainage and additional Public Lighting installed. Works also included measures to improve safety in front of National School.

Project Cost € 350,000



Project Reference 4





Project Location HOSPITAL ROAD, CROOM

Project Description New footpath on Hospital Road

Location



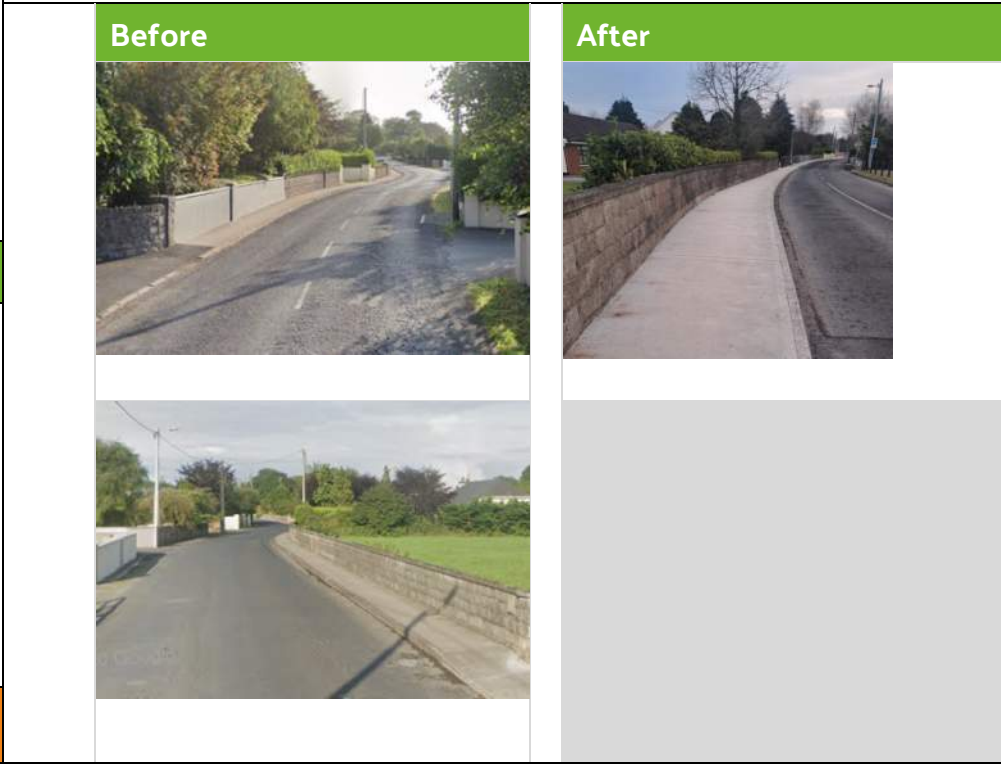
Project Category

	Pedestrian Facilities <input checked="" type="checkbox"/>		Cycle Facilities <input type="checkbox"/>
	Pedestrian And Cycle Facilities <input type="checkbox"/>		Features <input type="checkbox"/>

Project Overview

300m of existing narrow footpaths in very poor condition were upgraded and widened to improve connectivity with local amenities and services. Extensive drainage works and upgrading of public lighting completed.

Project Cost €374,999.99



Project Reference 5

Project Location ST SENANS TERRACE, CROOM

Project Description Connection from St. Senan's Terrace to Hospital Road

Location



Project Category



Pedestrian Facilities



Cycle Facilities



Pedestrian And Cycle Facilities

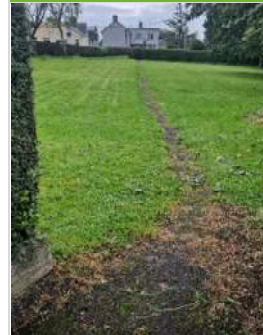


Features

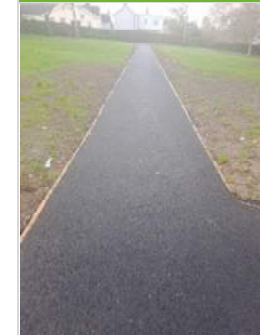
Project Overview

New footpath provided to formalise an established local desire line between a Housing Estate and the nearby Secondary School. These works encourage and promote active modes for children going to school.

Before



After



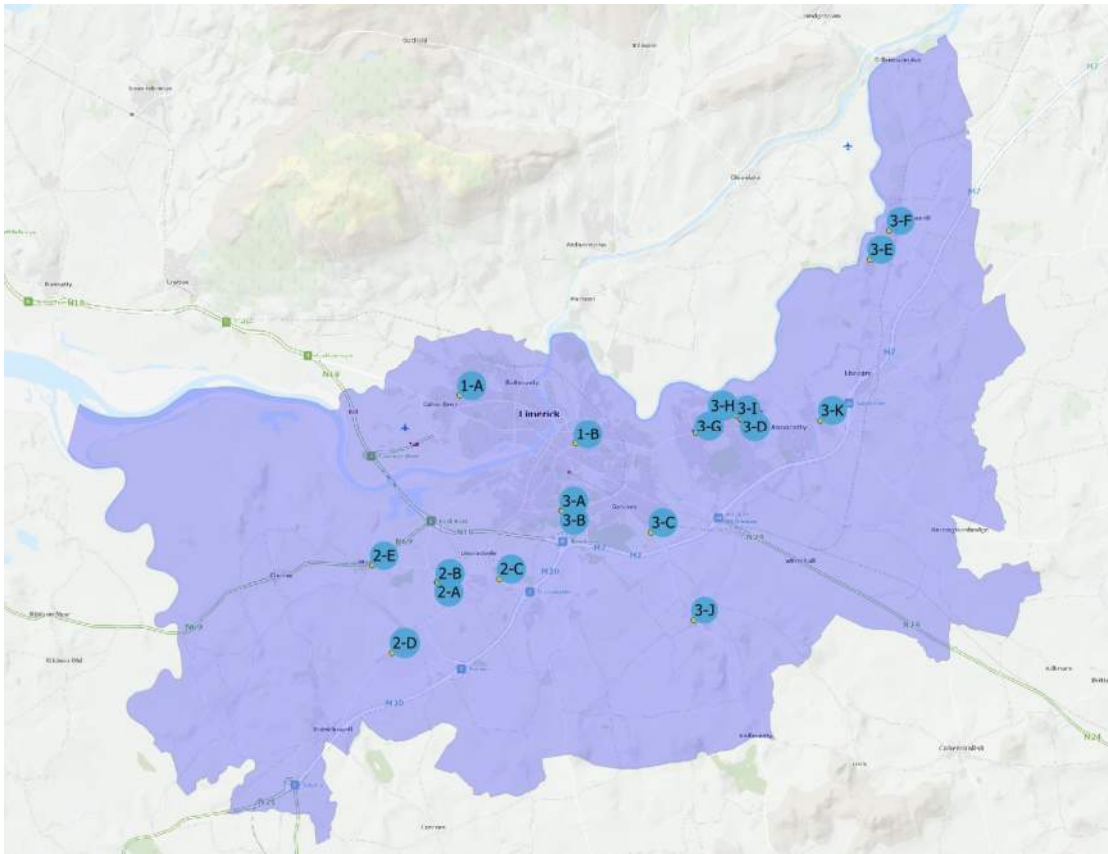
Project Cost

€ 24,996.59

SECTION SEVEN

Limerick City & County Council Bus Stop Programme

LIMERICK METROPOLITAN MUNICIPAL DISTRICT



- 1-A Blackthorn Drive, Eastbound
- 1-B New road, Eastbound
- 2-A R510 Raheen, Northbound
- 2-B R510 Raheen, Southbound
- 2-C Mulcair Road, Eastbound
- 2-D R526 Cloughkeating, Northbound
- 2-E R859 Mungret Road, Westbound
- 3-A Childers Road, Westbound
- 3-B Sycamore Avenue, Westbound
- 3-C Kilmallock Rd Rosmor, Southbound
- 3-D Plassey Rd, Southbound
- 3-E Stradbally North, Southbound
- 3-F Castle St, Westbound
- 3-G Dublin Road, Inbound
- 3-H Plassey Park Road, Eastbound
- 3-I Plassey Rd, Northbound
- 3-J R512, Westbound
- 3-K Annacotty Dublin Road, Westbound

Project Description

BUS STOP PROGRAMME

1 - Metropolitan North Municipal District



1A



1B

2 - Metropolitan West Municipal District



2A



2B



2C



2D



2E

3 - Metropolitan East Municipal District



3A



3B



3C



3D



3E



3F



3G



3H

3 - Metropolitan East Municipal District



3I

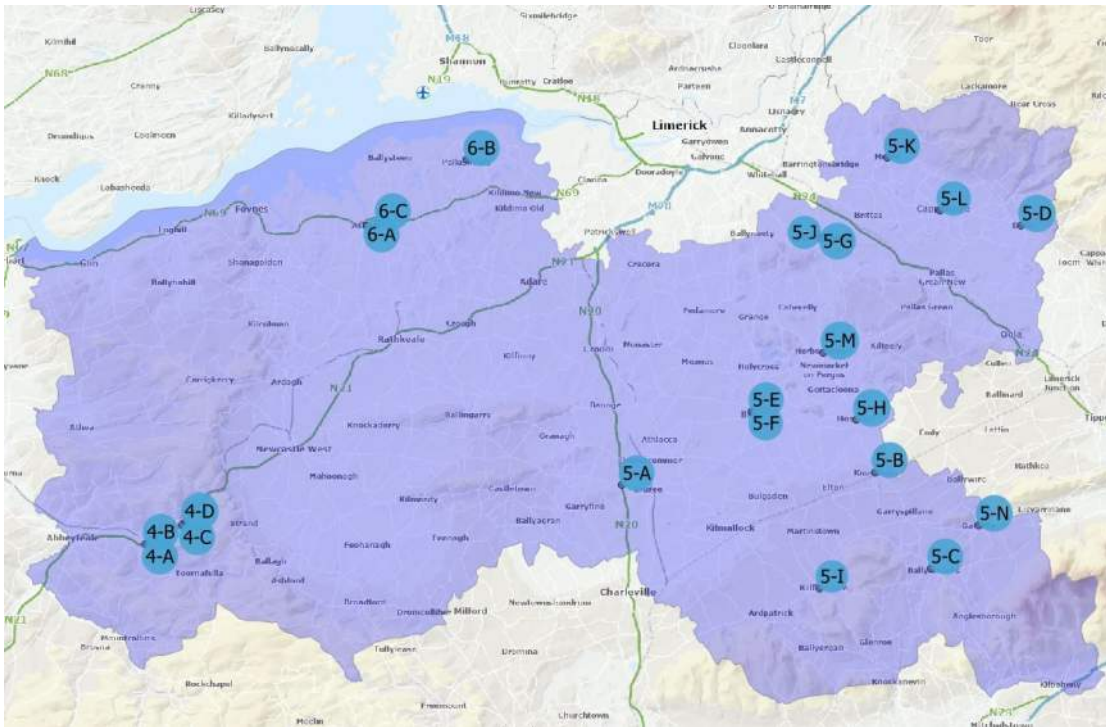


3J



3K

LIMERICK COUNTY MUNICIPAL DISTRICT



- 4-A N21 Devon Road Cross, Westbound
- 4-B N21 Devon Road Cross, Eastbound
- 4-C N21 Templeglantine, Southbound
- 4-D N21 Templeglantine, Northbound

- 5-A N20 Bruree, Northbound
- 5-B R513 Knocklong, Westbound
- 5-C Main Street Ballylanders, Northbound
- 5-D R505 Bank Place Doon, Westbound
- 5-E R516 Main St Bruff, Northbound
- 5-F R516 Main St Bruff, Southbound
- 5-G R513 Main St Caherconlish, Southbound
- 5-H R513 Main St Hospital, Southbound
- 5-I R517 Kilfinane, Westbound
- 5-J R513 Main St Caherconlish, Northbound
- 5-K Ros Farna Murroe, Westbound
- 5-L Main Street Cappamore, Westbound
- 5-M Herbertstown, Southbound
- 5-N The Square Galbally, Northbound
- 6-A R518 Chapel Rd Askeaton, Eastbound
- 6-B Cluain Mhuire Pallaskenry, Westbound
- 6-C R518 Church St Askeaton, Eastbound

Project Description

BUS STOP PROGRAMME

4 - Newcastle West Municipal District



4A



4B



4C



4D

6 - Adare Rathkeale Municipal District



6A



6B



6C

5 – Cappamore Kilmallock Municipal District



5A



5B



5C



5D



5E



5F



5G



5H

5 – Cappamore Kilmallock Municipal District



5I



5J



5K



5L



5M



5N