

# RRDF Project Updates

Michael J McNamara

Acting Senior Executive Engineer

Rural Development

02/04/2026



Comhairle Cathrach  
& Contae **Luimnigh**

**Limerick** City  
& County Council

# RRDF Projects

## RRDF Category 1

- RF0233 – West Limerick Tourism Hub – Fullers Folly
- RF0234 – Limerick Greenway Hubs Development Project

## RRDF Category 2

- RF0178 – Limerick Greenway Hub @ Abbeyfeale

# RF0233 - West Limerick Tourism Hub - Fullers Folly - Project Update



Comhairle Cathrach  
& Contae **Luimnigh**

**Limerick** City  
& County Council

# Site Location

Bridge Street,  
Newcastle West,  
Co. Limerick



Comhairle Cathrach  
& Contae **Luimnigh**

Limerick City  
& County Council

# Aerial Photo

## Fullers Folly and Desmond Castle



or

Desmond Castle

Coach House

Fullers Folly



Comhairle Cathrach  
& Contae **Luimnigh**

**Limerick City**  
& County Council

# Project Update

- Current Status – Detailed Design Ongoing
- Construction Tender Issue – Q2 2026
- Estimated Construction Start – Q4 2026
- Estimated Construction Completion – Q1 2028

# Project Details

- Refurbishment of existing buildings and courtyard
- Development includes a café, toilets, interpretation/exhibition spaces and viewing platforms at roof level
- New glass structure in between the two buildings comprising of entrance foyer and circulation space with stairs and a lift
- Resurfacing of courtyard
- Public realm works adjacent to river with improved linkage to Desmond Castle site

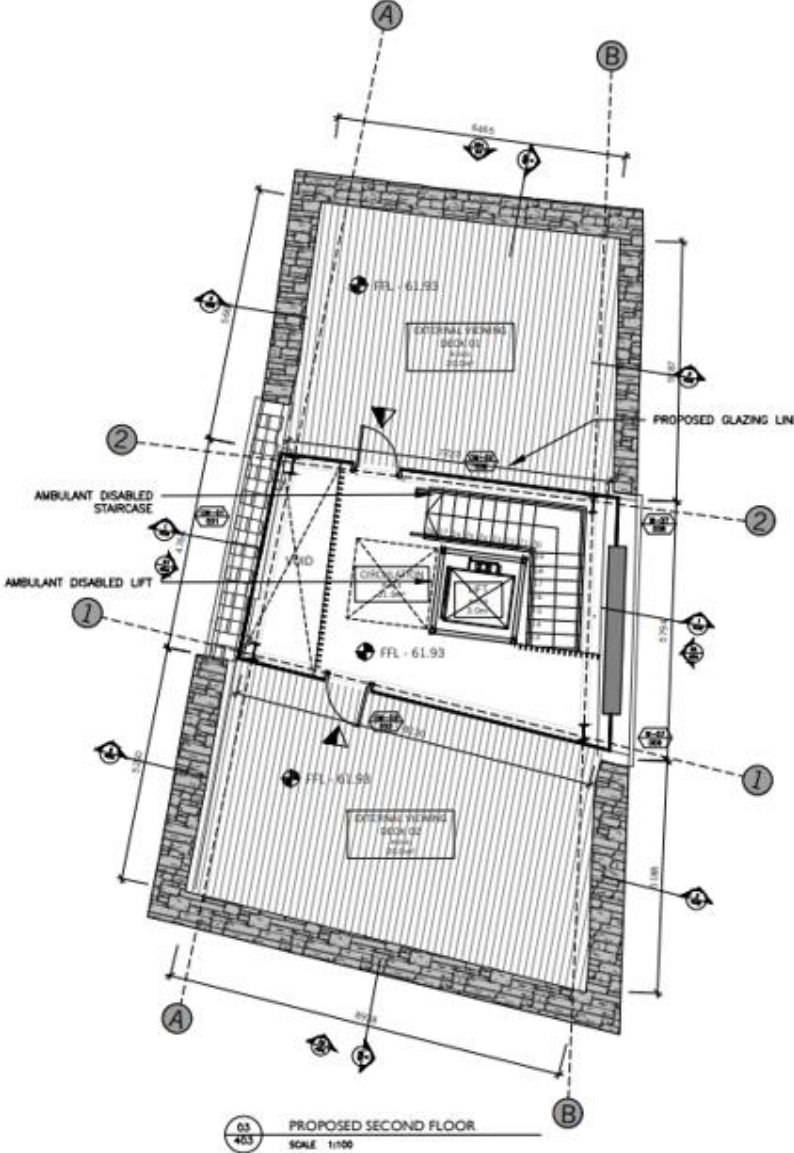
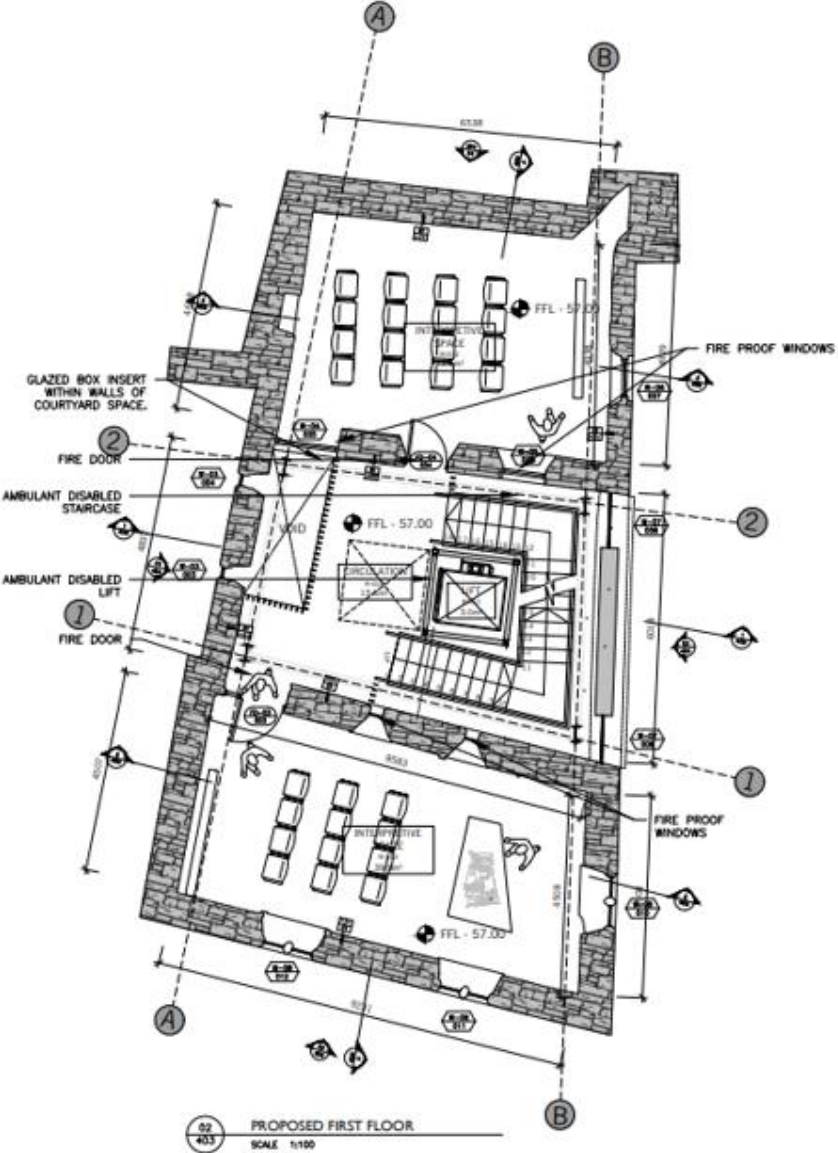
# Site Layout

GROUND FLOOR

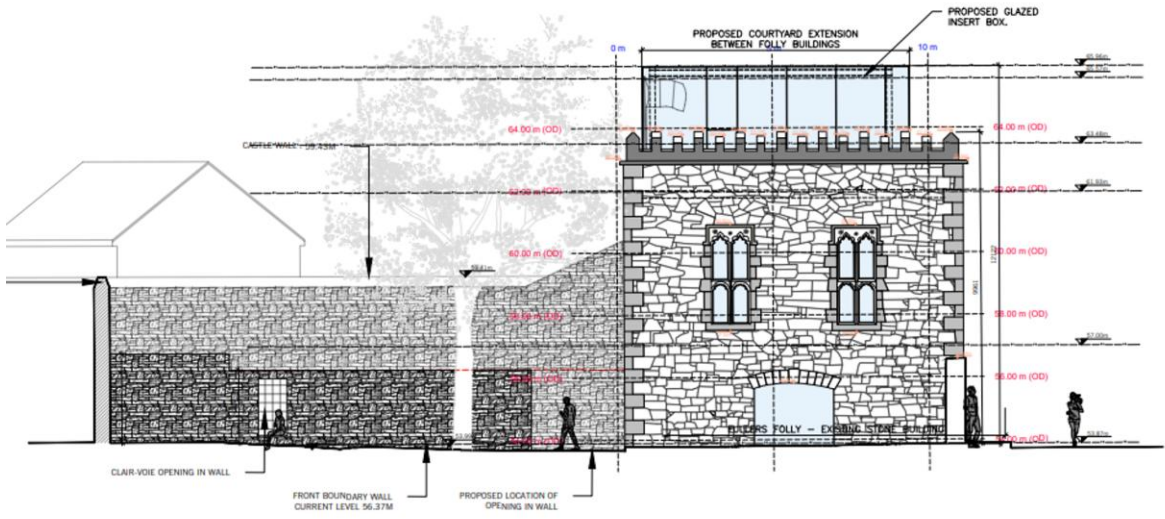




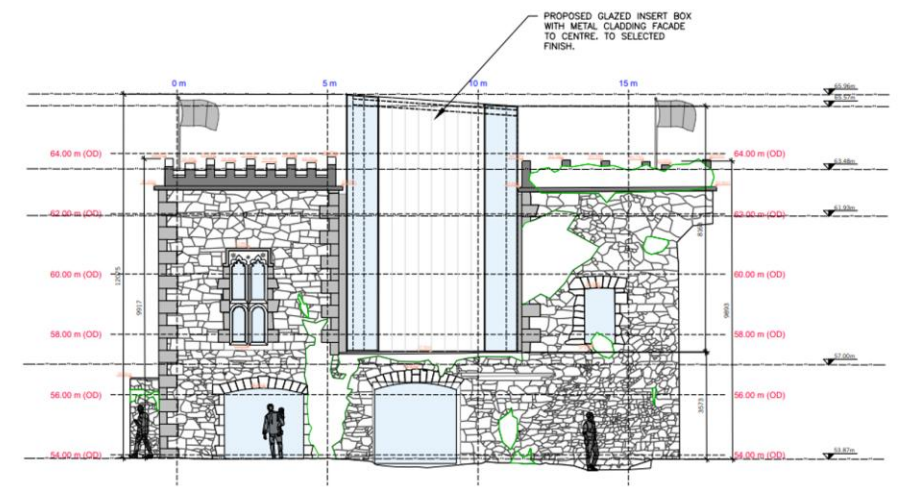
# First & Second Floor Plan



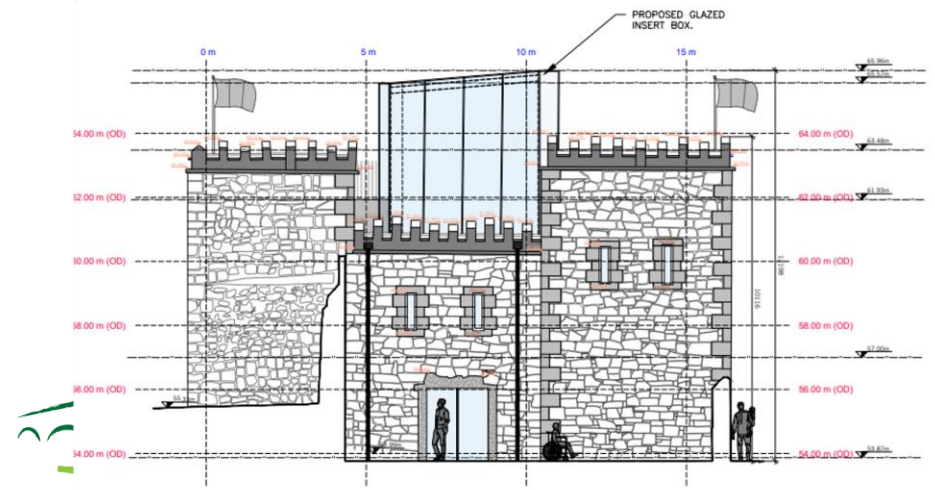
# Elevations



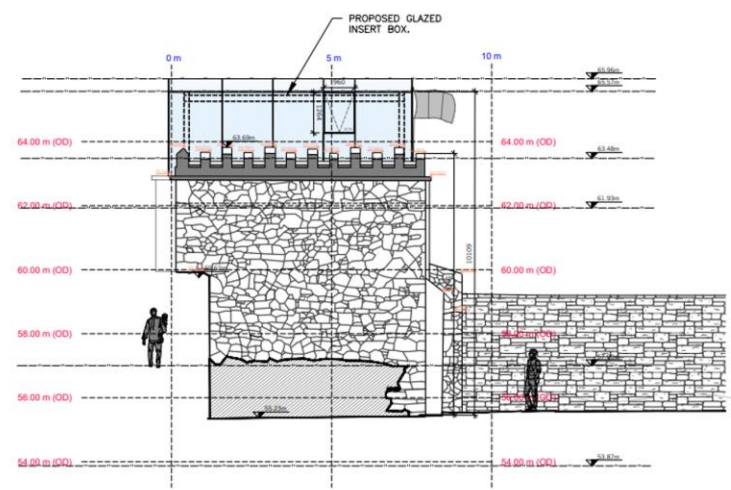
01  
404 PROPOSED SOUTH ELEVATION



04  
404 PROPOSED EAST ELEVATION  
SCALE 1:100



02  
404 PROPOSED WEST ELEVATION  
SCALE 1:100



03  
404 PROPOSED NORTH ELEVATION  
SCALE 1:100

# Visualisation

## Fullers Folly – View from N21



Comhairle Cathrach  
& Contae **Luimnigh**

Limerick City  
& County Council

# Visualisation

## Fullers Folly - View from Desmond Castle



Comhairle Cathrach  
& Contae **Luimnigh**

Limerick City  
& County Council

# RF0234 - Limerick Greenway Hubs Development Project – Project Update



Comhairle Cathrach  
& Contae **Luimnigh**

**Limerick** City  
& County Council

# Limerick Greenway Hubs Development Project – RRDF Category 1

- Limerick Greenway Hub @ Ardagh
- Limerick Greenway Hub @ Newcastle West
- Barnagh Station House Project

# Limerick Greenway Hub @ Ardagh



Comhairle Cathrach  
& Contae **Luimnigh**

**Limerick** City  
& County Council

# Project Update

- Current Status – Tender Assessment Ongoing
- Estimated Construction Start – Q2 2026
- Estimated Construction Completion – Q3 2027

# Project Details

- Refurbished Station House with a Café, toilets and a visitor experience narrating the story of the discovery of the Ardagh Chalice.
- Train Carriage with servery hatch, café seating and railway themed interpretation
- Carpark
- Playground
- Campervan Parking Area
- Refurbished Goods Shed with services for Campervan users.
- Extensions to the Station House and Goods Shed

# Site Layout



# Railway Carriage



# Visualisation



Comhairle Cathrach  
& Contae **Luimnigh**

**Limerick City**  
& County Council

# Limerick Greenway Hub @ Newcastle West



Comhairle Cathrach  
& Contae **Luimnigh**

**Limerick** City  
& County Council

# Project Update

- Construction Works Commenced – September 2025
- Estimated Construction Completion – June 2026

# Project Details

- Provision of a carpark with 80 spaces, including Disability Spaces, EVCP spaces and coach parking
- Public Realm area with picnic tables, benches, bike stands, drinking water fountain, route maps etc...
- New signalised pedestrian crossing connecting the Greenway Hub to the Bishops Court trail
- Provision of a hard standing area and installation of services for a future Hub building
- Installation of Public Lighting, CCTV etc...



# Pre Construction Photo

## Limerick Greenway Hub @ NCW Car Park



Comhairle Cathrach  
& Contae **Luimnigh**

Limerick City  
& County Council



# Progress Photo

## Limerick Greenway Hub @ NCW Car Park



Comhairle Cathrach  
& Contae **Luimnigh**

Limerick City  
& County Council



# Barnagh Station House



Comhairle Cathrach  
& Contae **Luimnigh**

**Limerick** City  
& County Council

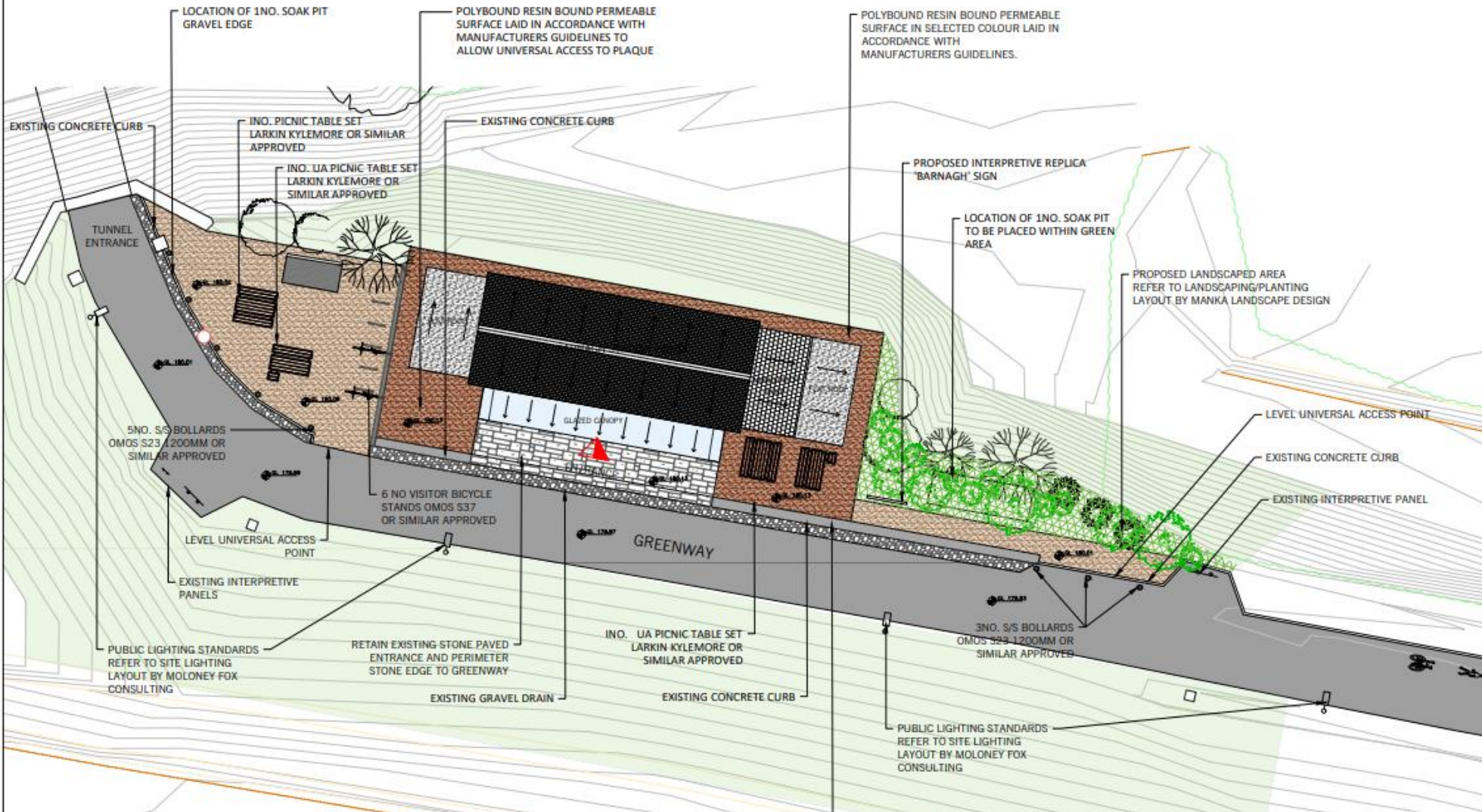
# Project Update

- Construction Works Commenced – May 2025
- Estimated Construction Completion – June 2026

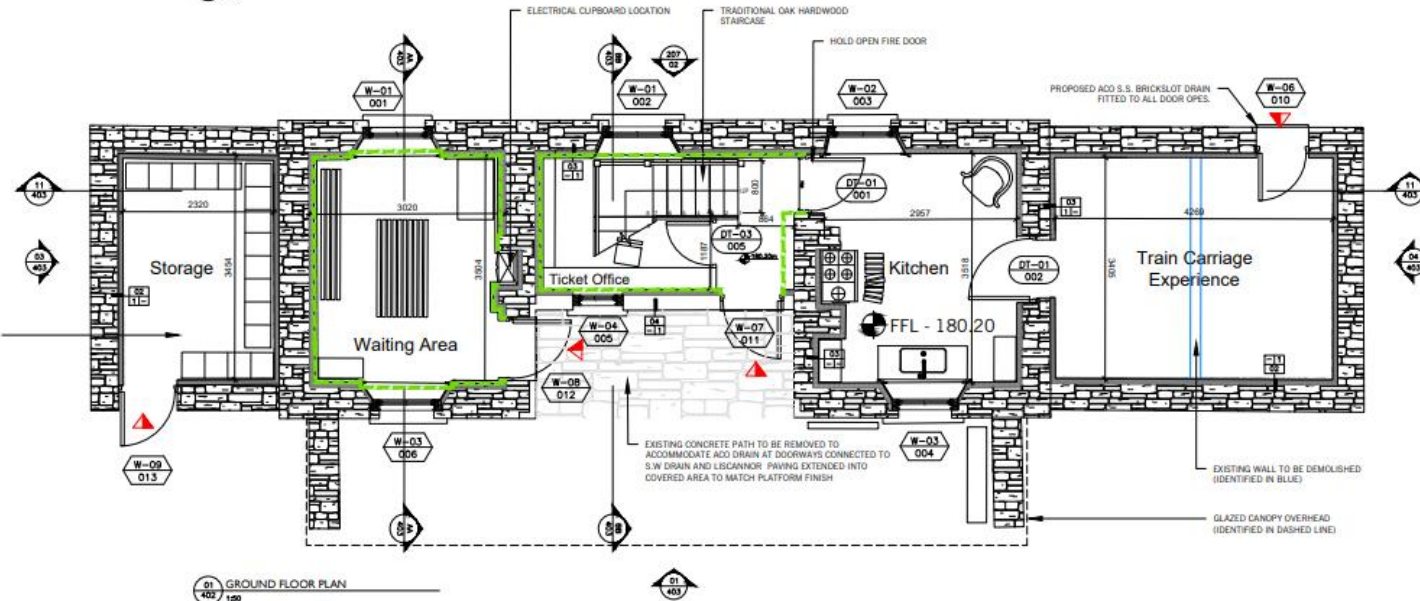
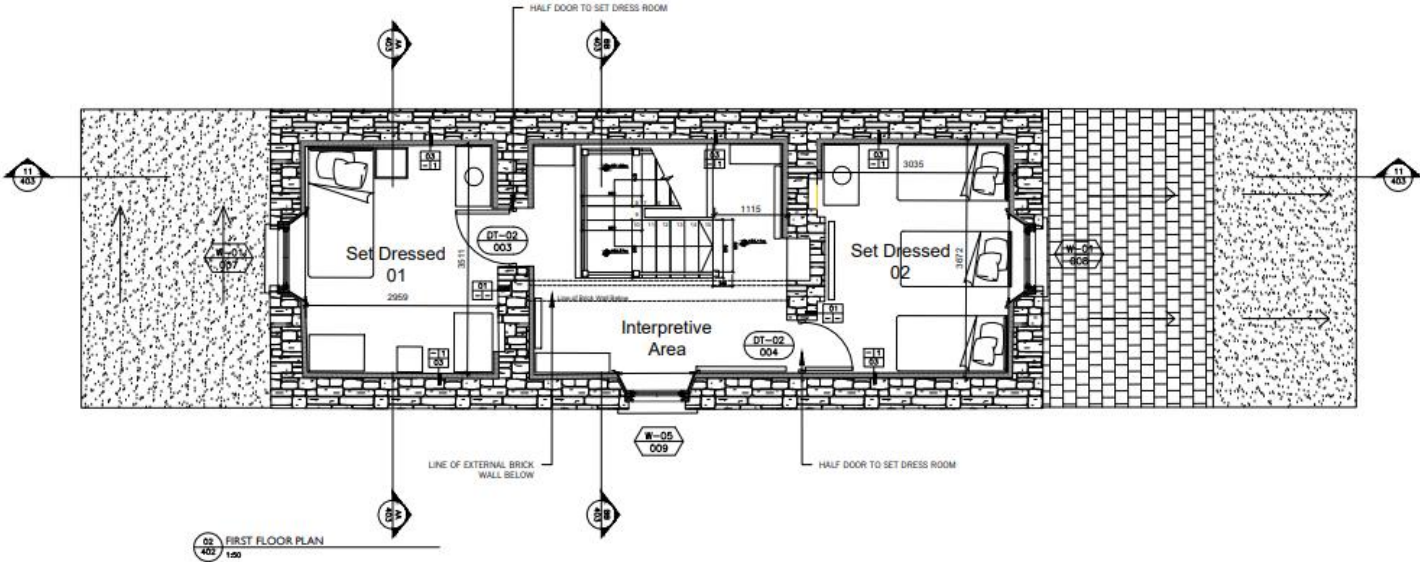
# Project Details

- Refurbishment and fit-out of the former Station house to recreate the look, feel and atmosphere of the working station house in the early 1900s
- Interpretive elements include set dress, furnishings, graphics and signage, audio points and a railway themed audio-visual experience
- Upgrade of platform and external area to include glass canopy for shelter, bike stands, picnic tables, signage and landscaping
- Installation of Public Lighting, CCTV etc...

# Site Layout



# Floor Plans



# Pre Construction Photo

## Barnagh Station House



Comhairle Cathrach  
& Contae **Luimnigh**

Limerick City  
& County Council



# Progress Photo

## Barnagh Station House



Comhairle Cathrach  
& Contae **Luimnigh**

Limerick City  
& County Council



# Progress Photo

## Barnagh Station House



Comhairle Cathrach  
& Contae **Luimnigh**

Limerick City  
& County Council



# Visualisation

## Barnagh Station House



Comhairle Cathrach  
& Contae **Luimnigh**

**Limerick** City  
& County Council

# RF0178 - Limerick Greenway Hub @ Abbeyfeale - Project Update



Comhairle Cathrach  
& Contae **Luimnigh**

**Limerick** City  
& County Council

# Project Update

- Works complete to remove and make safe the Goods Shed roof
- Majority of existing timber trusses, rafters, purlins and slates recovered and stored for future use
- Ongoing engagement with designers to identify future use for Goods Shed and surrounding site

# Roof Condition and Removal



Comhairle Cathrach  
& Contae **Luimnigh**

**Limerick City**  
& County Council

# Roof Removal – Finished Works



Comhairle Cathrach  
& Contae **Luimnigh**

**Limerick City**  
& County Council

# Thank You



Comhairle Cathrach  
& Contae **Luimnigh**

**Limerick** City  
& County Council