



Comhairle Cathrach
& Contae **Luimnigh**

Limerick City
& County Council

Scheme details

Rightsizing Scheme at Radharc Cillín, Kilfinane, Co. Limerick



Register of Interest for one-bedroom ground floor & first floor homes

The properties are currently under construction with the expected completion date of February 2026.

The homes are located in Radharc Cillín in Kilfinane with easy access to Kilfinane, local shops, pubs & restaurants.

There are two, one bed apartments available through this Rightsizing scheme. The rightsizing homes are located in a new development of 10 homes. The homes have a private rear terrace, and domestic pets such as dogs, cats and certain birds are allowed.

Why Choose Radharc Cillín

- Located in Kilfinane
- Well-established and well-serviced area
- Beautifully finished and spacious homes
- Local shops nearby including Centra & Gala Applegreen
- A number of restaurants and pubs including Kelleher's Bar and Molly's Kilfinane
- St. Andrew's Church is within walking distance
- Limerick Animal Welfare Sanctuary is a short drive from Kilfinane.
- Floor area of 49.2m² & 49.5m².

SITE LAYOUT PLAN

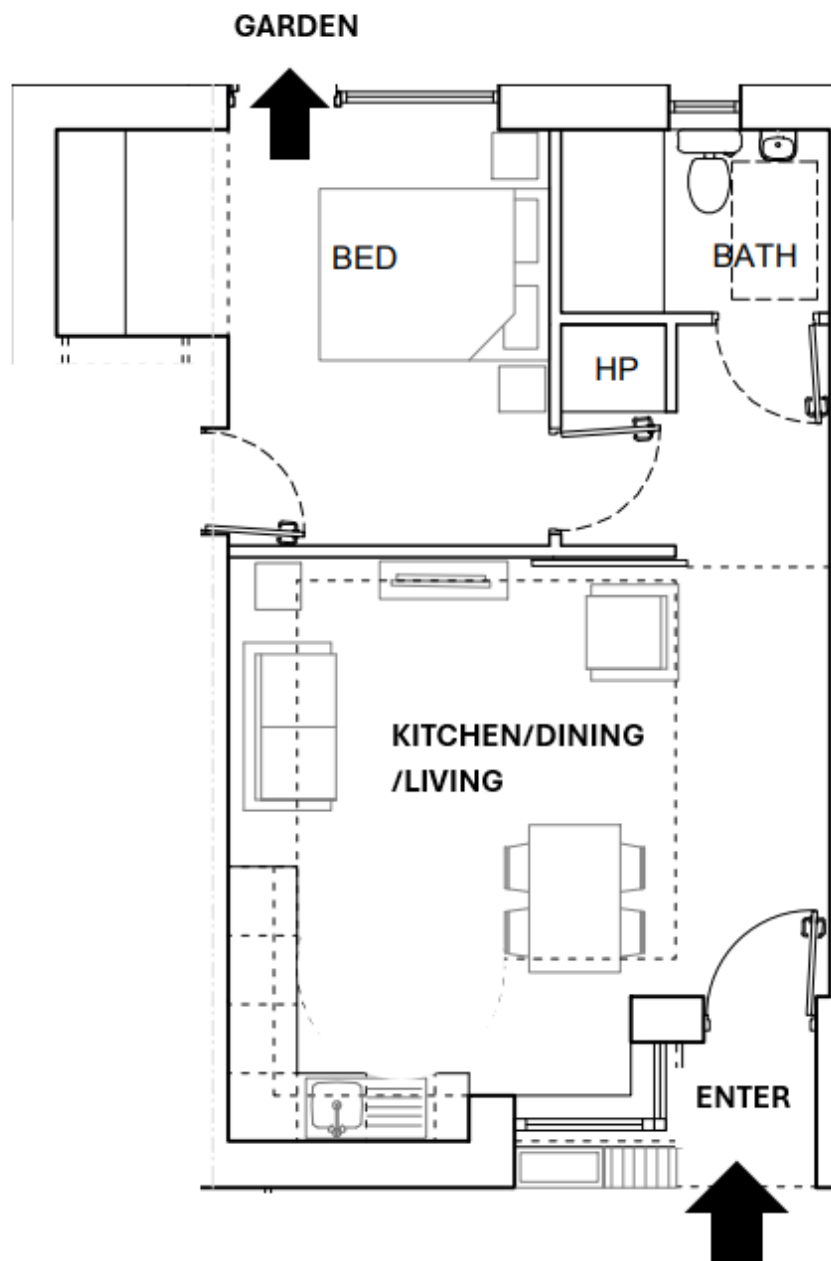
Units highlighted in blue



Floor plans

Measurements are indicative and for guidance purposes only

1-bedroom unit ground floor area: 49.5 m²



Floor plans

Measurements are indicative and for guidance purposes only

1-bedroom unit first floor area: 49.2 m²

