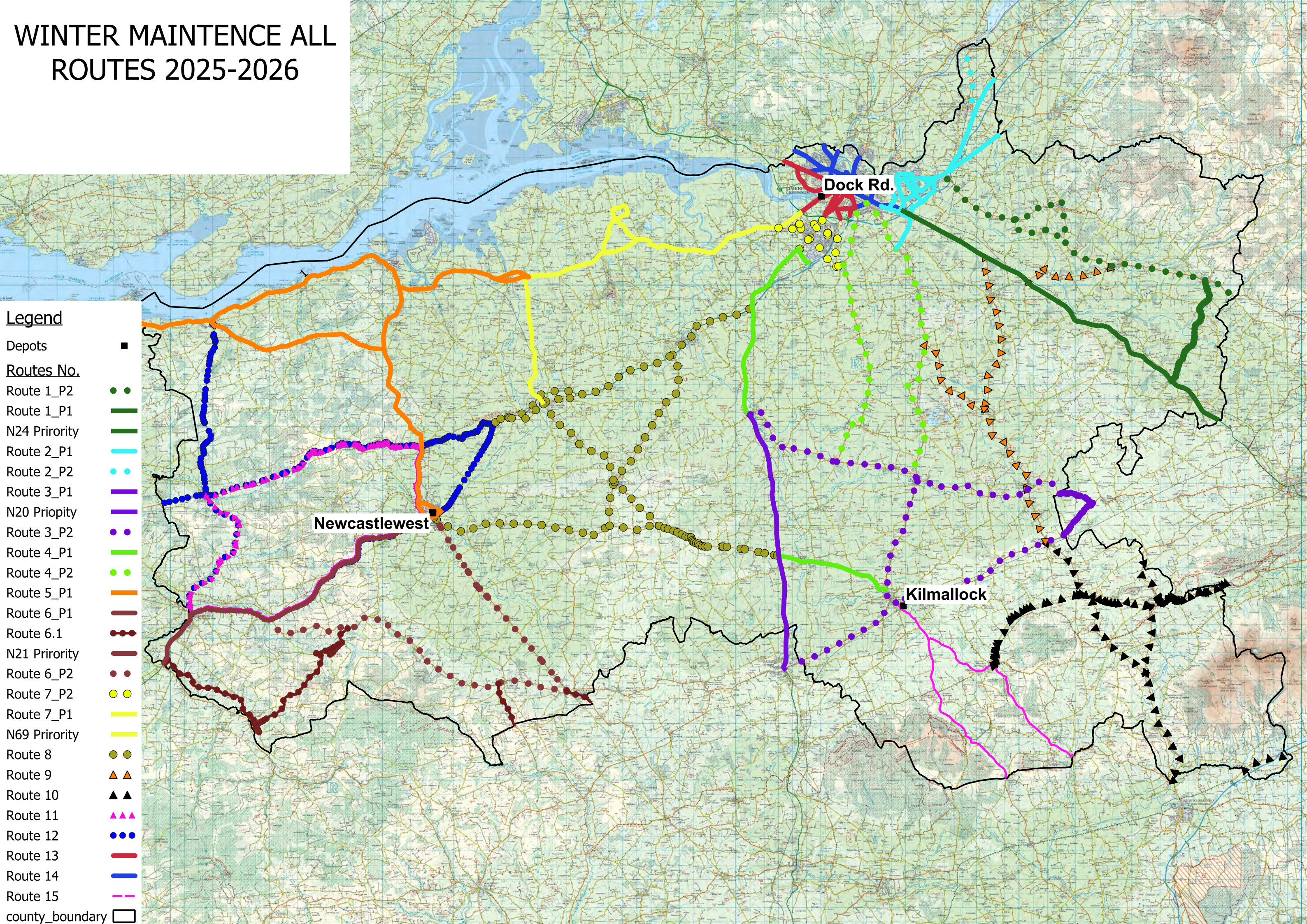
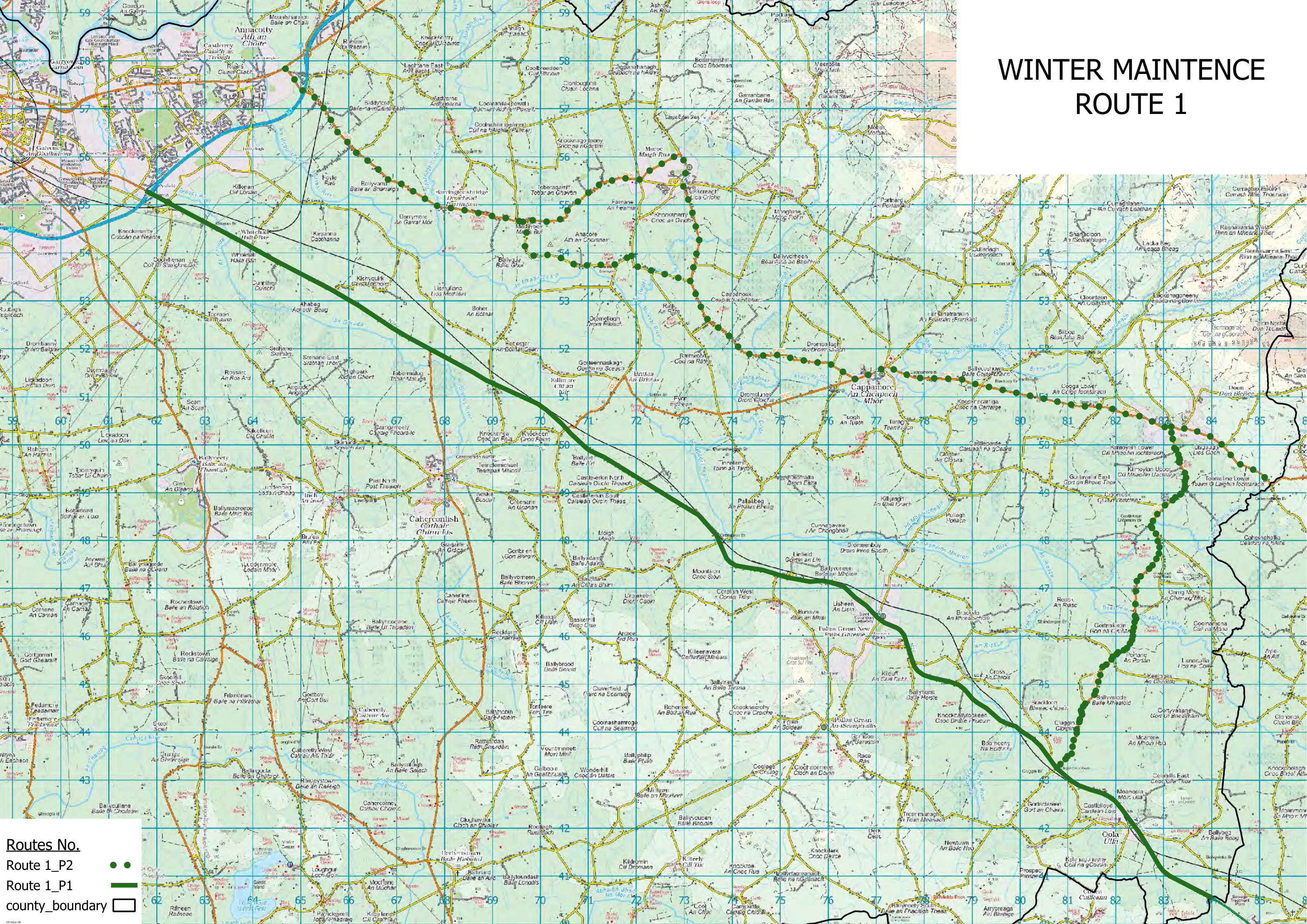


# WINTER MAINTENANCE ALL ROUTES 2025-2026





# WINTER MAINTENANCE ROUTE 1

Routes No.

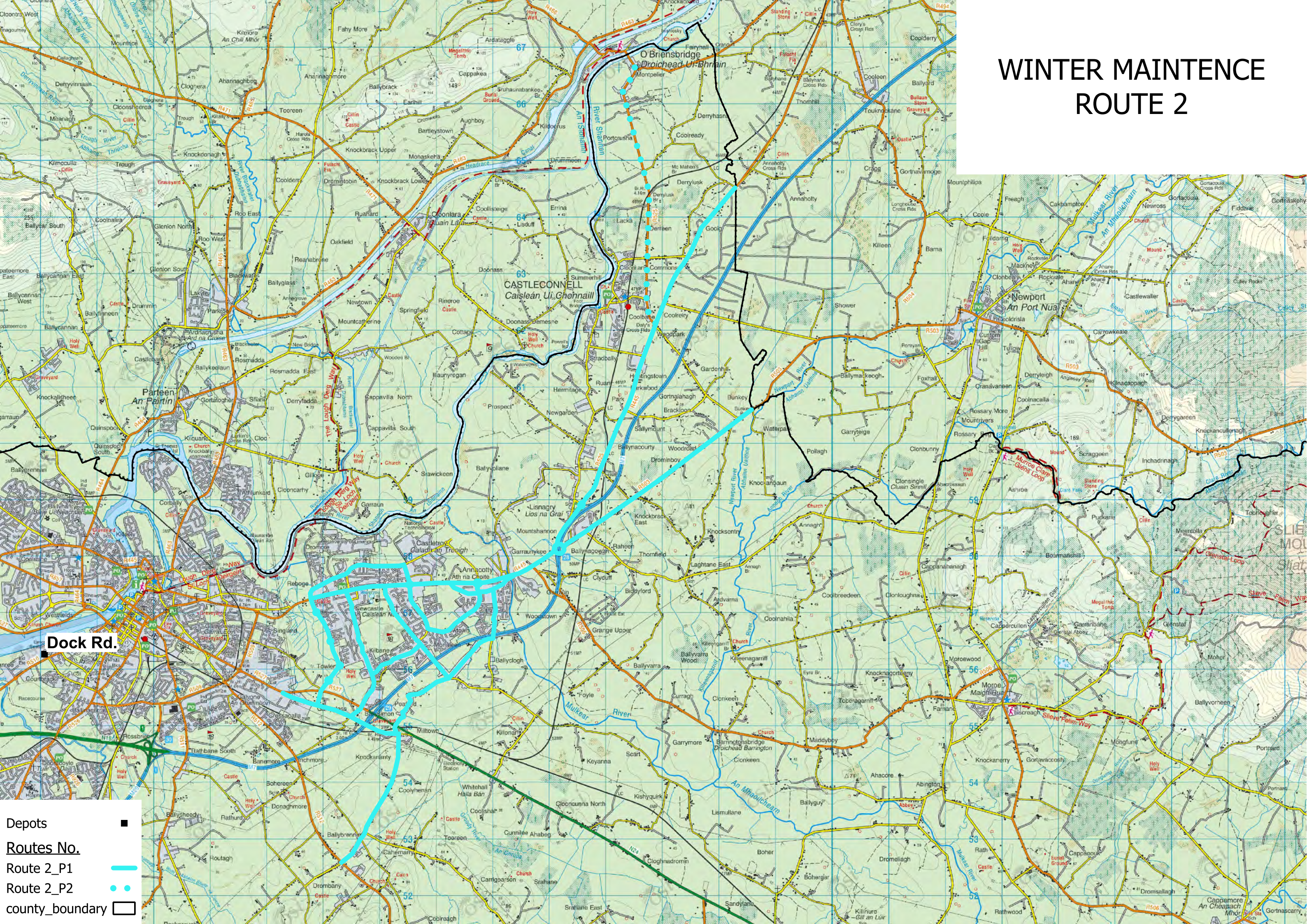
Route 1\_P2

Route 1\_P1

county\_boundary

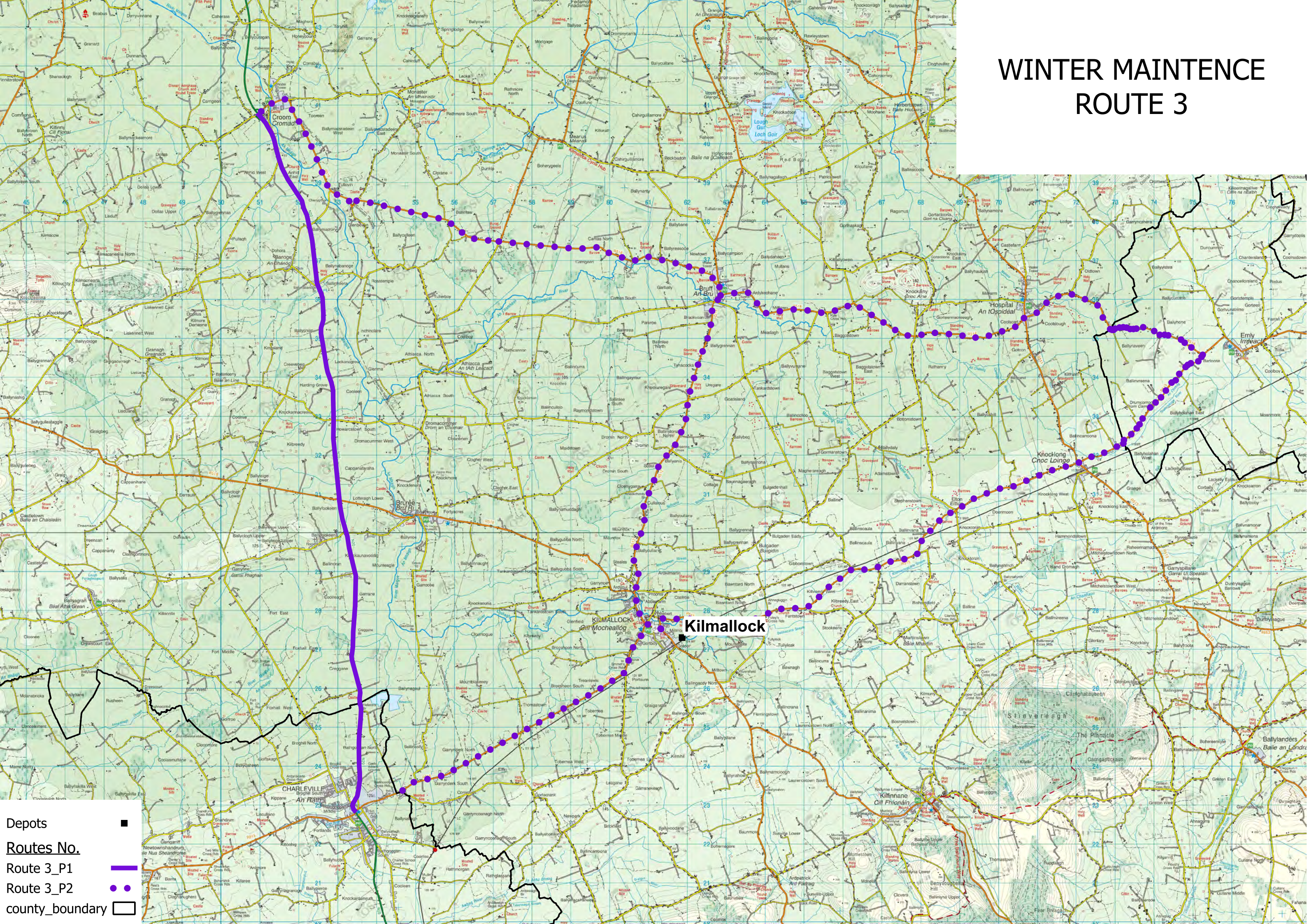


# WINTER MAINTENANCE ROUTE 2





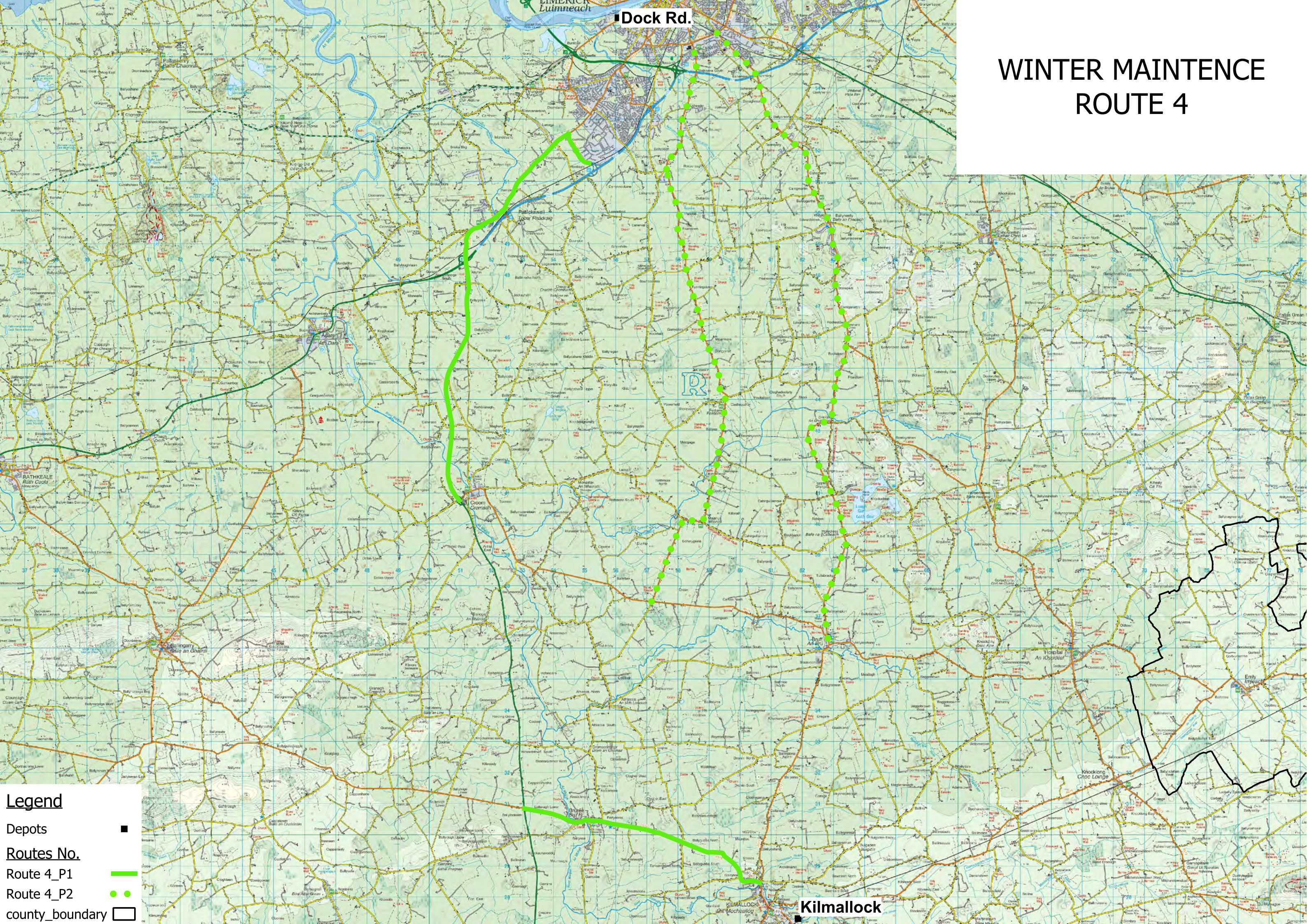
# WINTER MAINTENANCE ROUTE 3





■ Dock Rd.

# WINTER MAINTENANCE ROUTE 4



### Legend

## Depots

Routes No.

Route 4\_P1

Route 4\_P2

county\_boundary ☐

# Kilmallock



# WINTER MAINTENCE

## Route 5



**Legend**

Depots

■

Routes No.

Route 5\_P1

county\_boundary

—

—

□

Newcastlewest



# WINTER MAINTENANCE ROUTE 6

The map displays the Newcastlewest area, including Newcastlewest, Abbeyfeale, and Broomfield. The route is marked with a thick red line, and the sub-routes are marked with red dots. The map also shows various roads, rivers, and geographical features.

**Legend:**

- Depots
- Routes No.
- Route 6\_P1
- Route 6.1
- Route 6\_P2

# WINTER MAINTENANCE ROUTE 6

The map displays the Newcastlewest area, including Newcastlewest, Abbeyfeale, and Broomfield. The route is marked with a thick red line, and the area is divided into several regions, including the Mullaghareirk Mountains and the Mullaghareirk Mountains. The route is divided into three main sections: Route 6\_P1 (thick red line), Route 6.1 (dotted red line), and Route 6\_P2 (dotted red line). The route starts at Newcastlewest, goes west to Abbeyfeale, then south to Broomfield, and finally east to Dromcolliher. The map also shows various roads, rivers, and other geographical features.

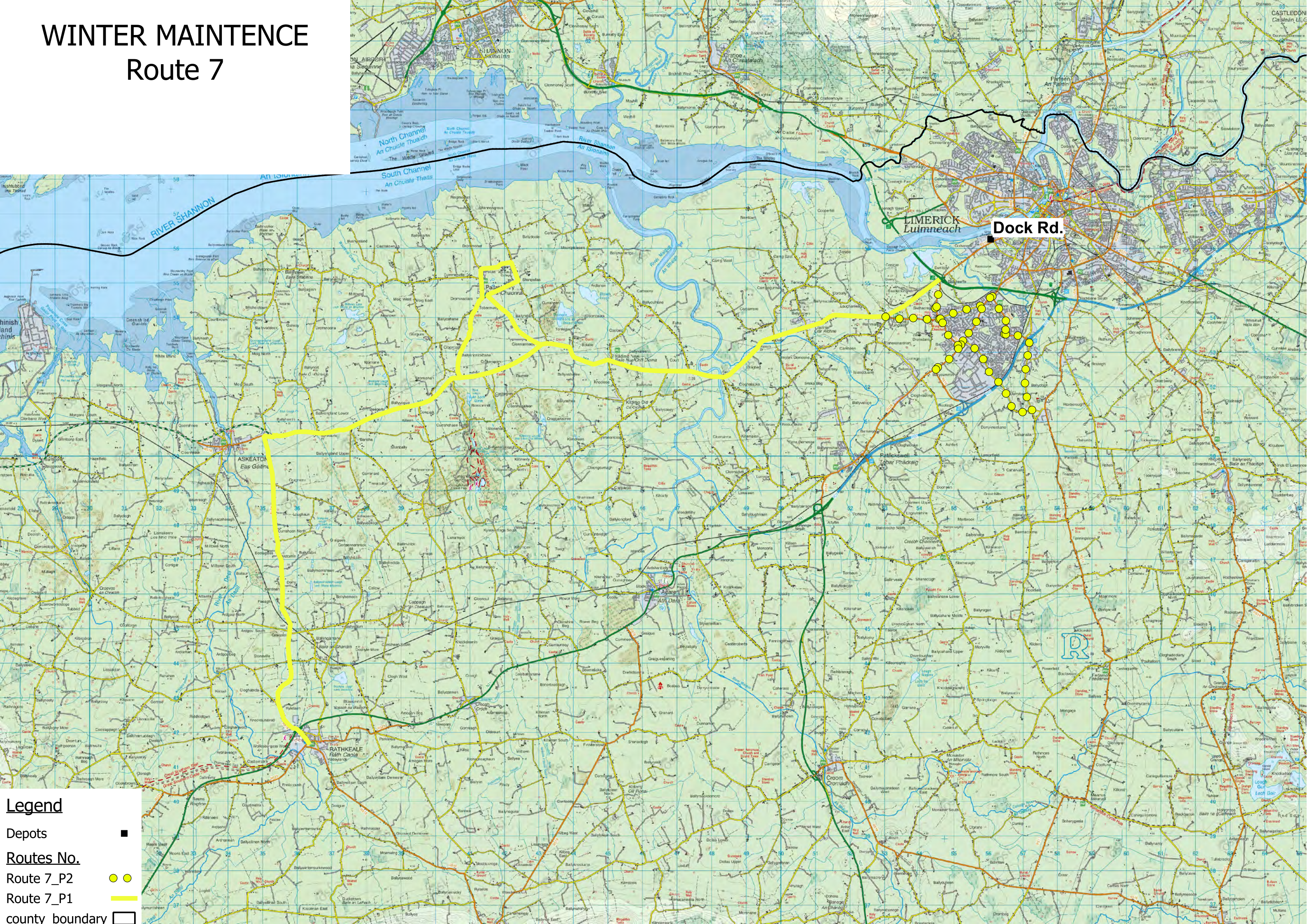
Legend:

- Depots
- Routes No.
- Route 6\_P1
- Route 6.1
- Route 6\_P2



# WINTER MAINTNENCE

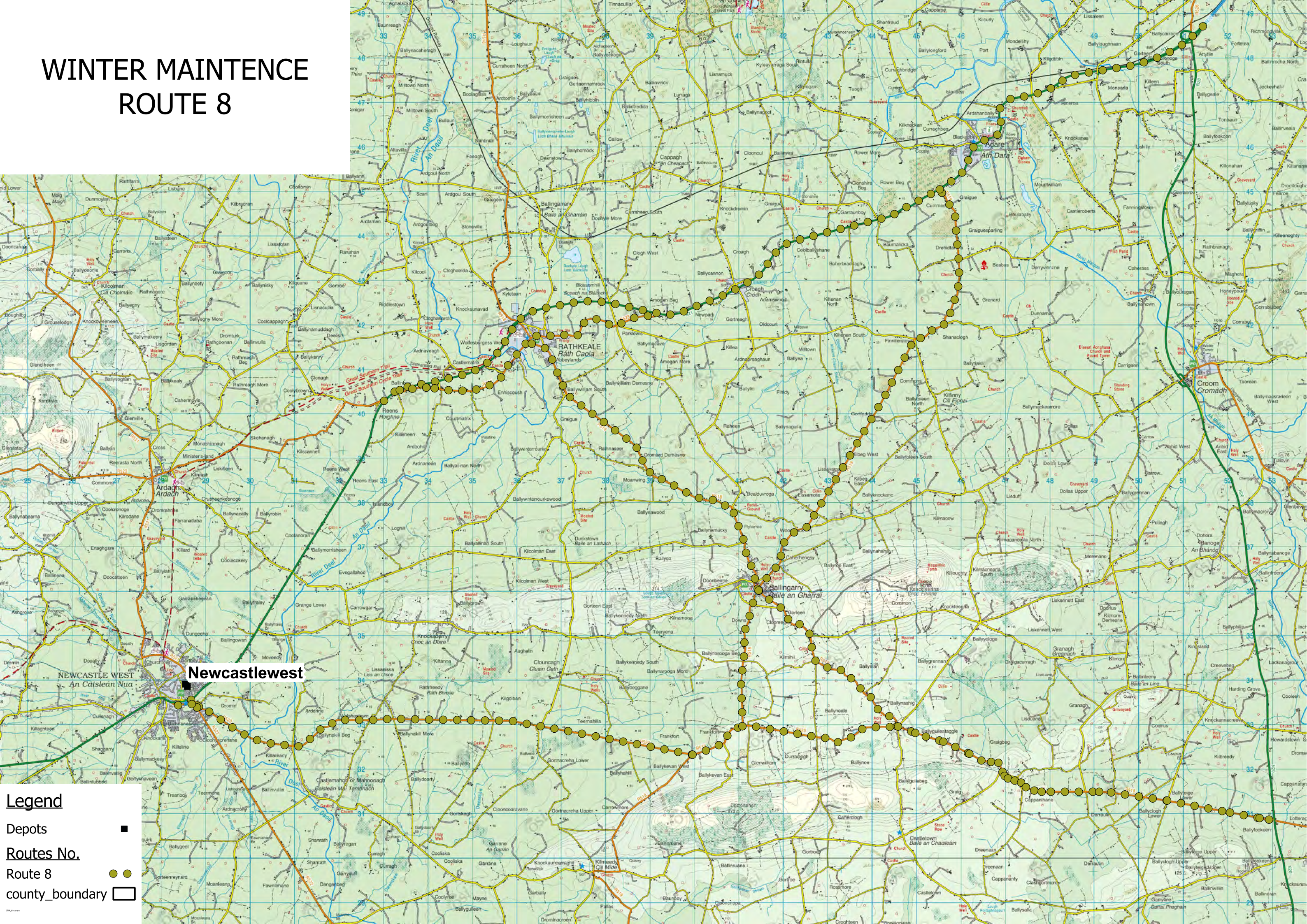
## Route 7





# WINTER MAINTENANCE

## ROUTE 8



**Legend**

Depots

■

Routes No.

Route 8

●

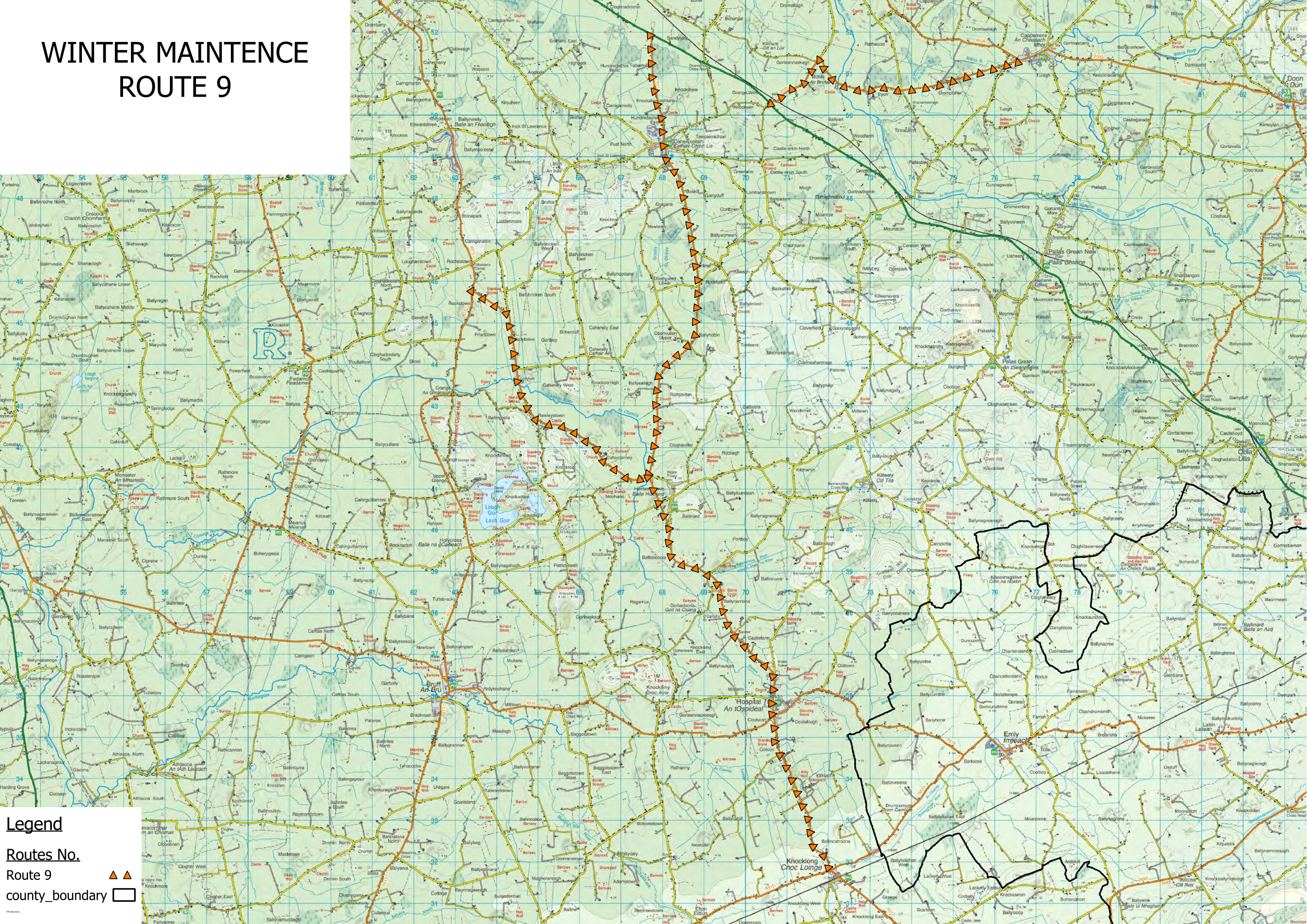
county\_boundary

□



# WINTER MAINTENCE

## ROUTE 9



**Legend**

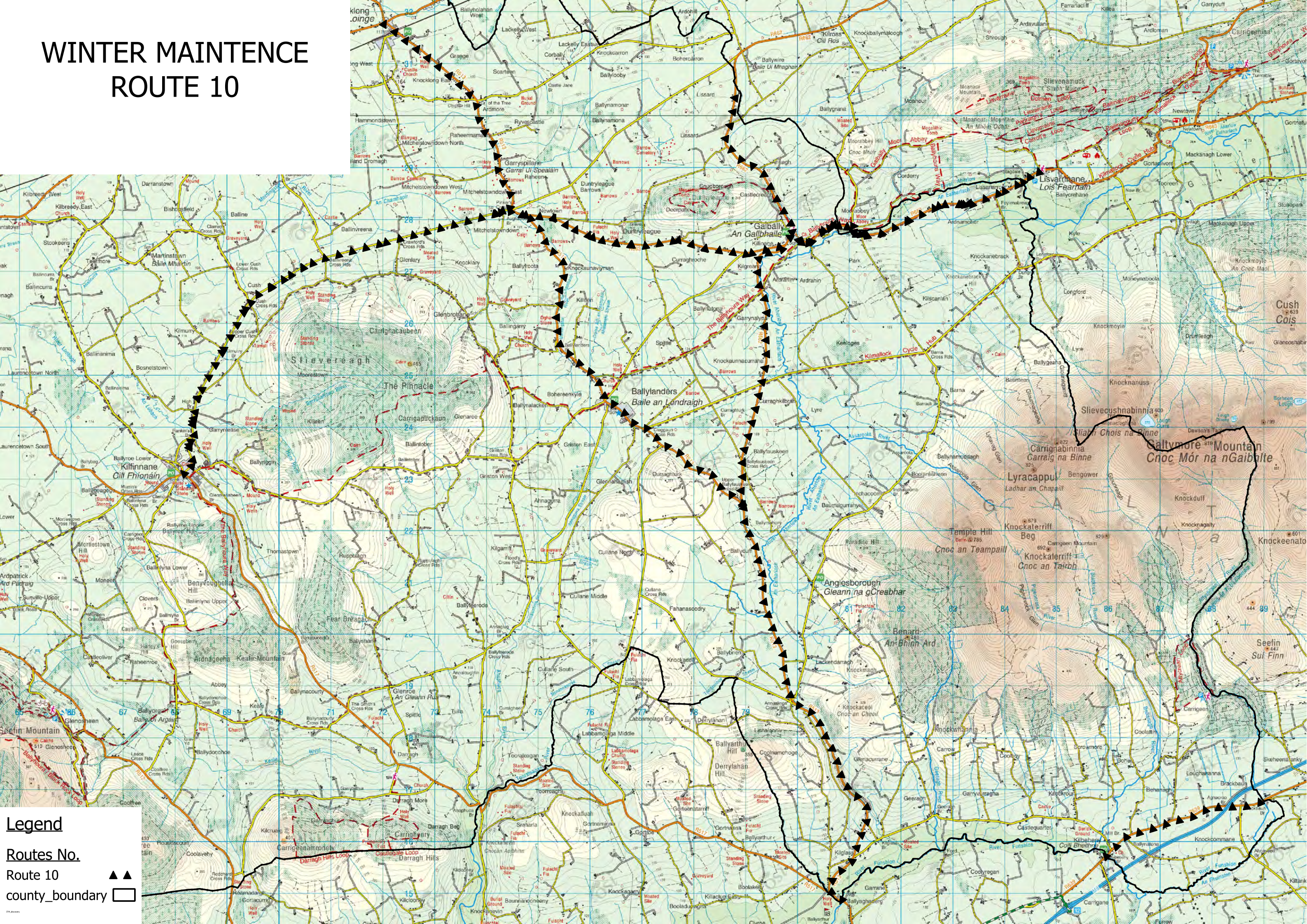
Routes No.

Route 9    ▲ ▲

county\_boundary    □



# WINTER MAINTENANCE ROUTE 10



### Legend

Routes No.

## Route 10

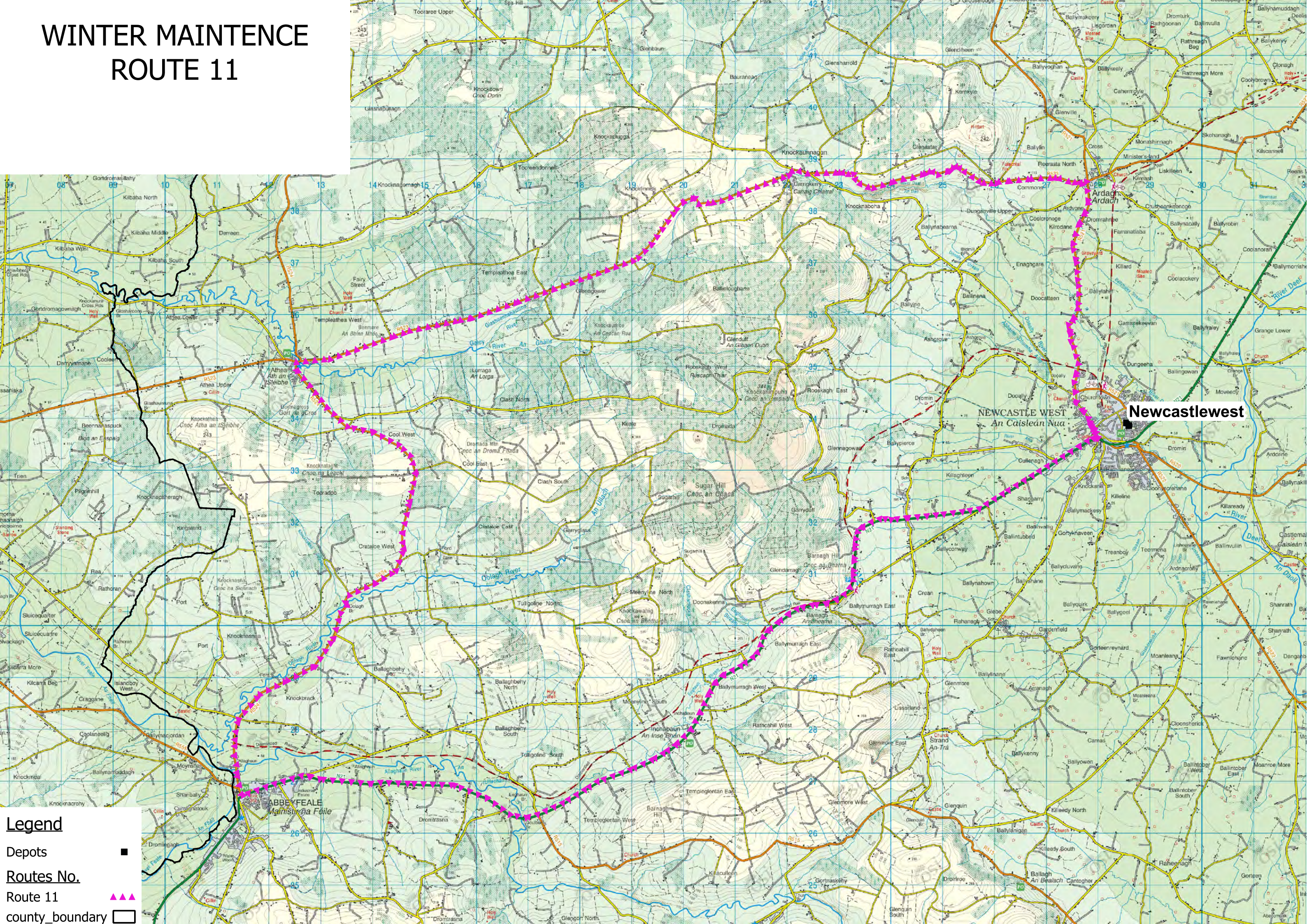
county\_boundary ☐

### THE DISCUSSION



# WINTER MAINTNENCE

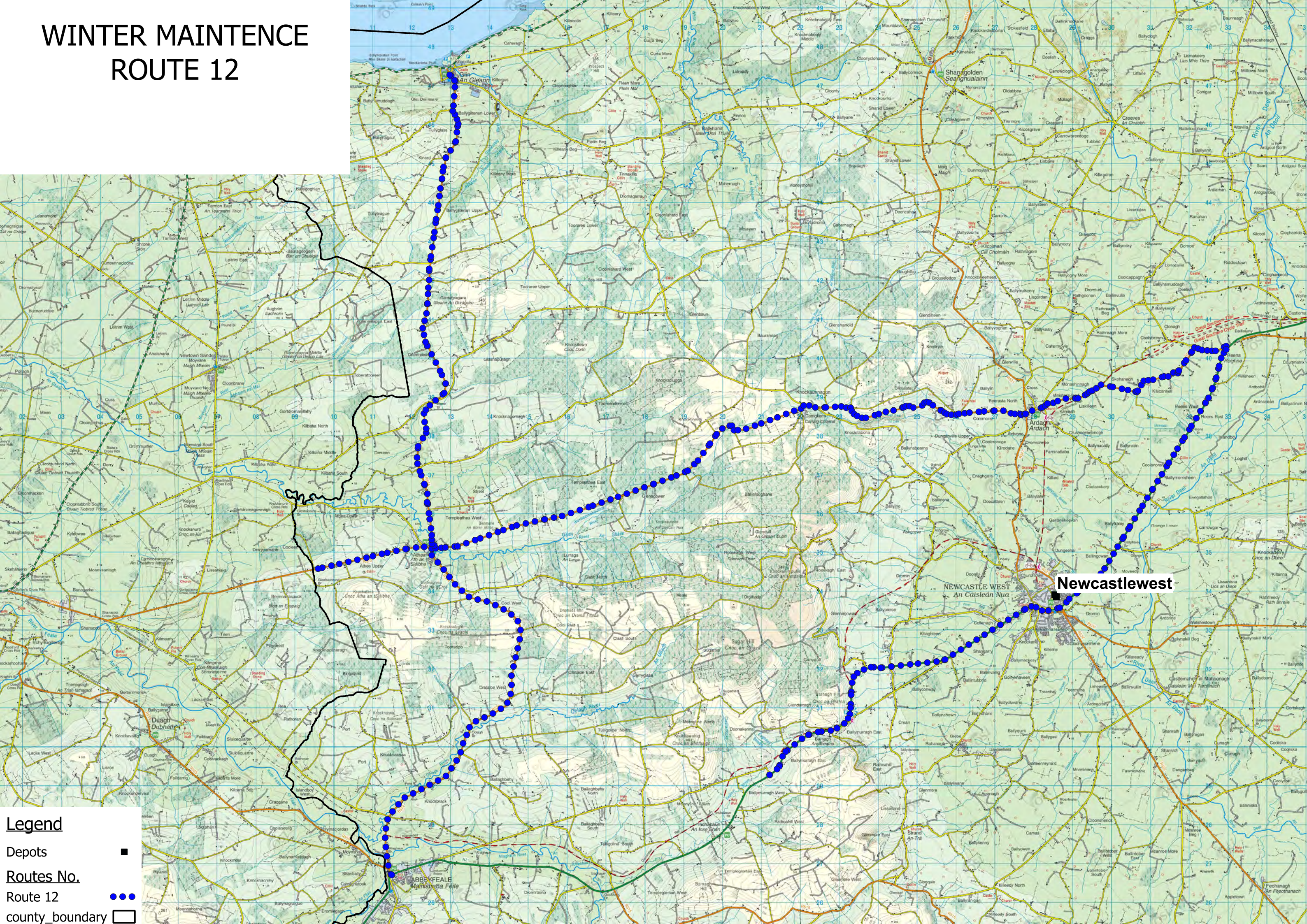
## ROUTE 11





# WINTER MAINTNENCE

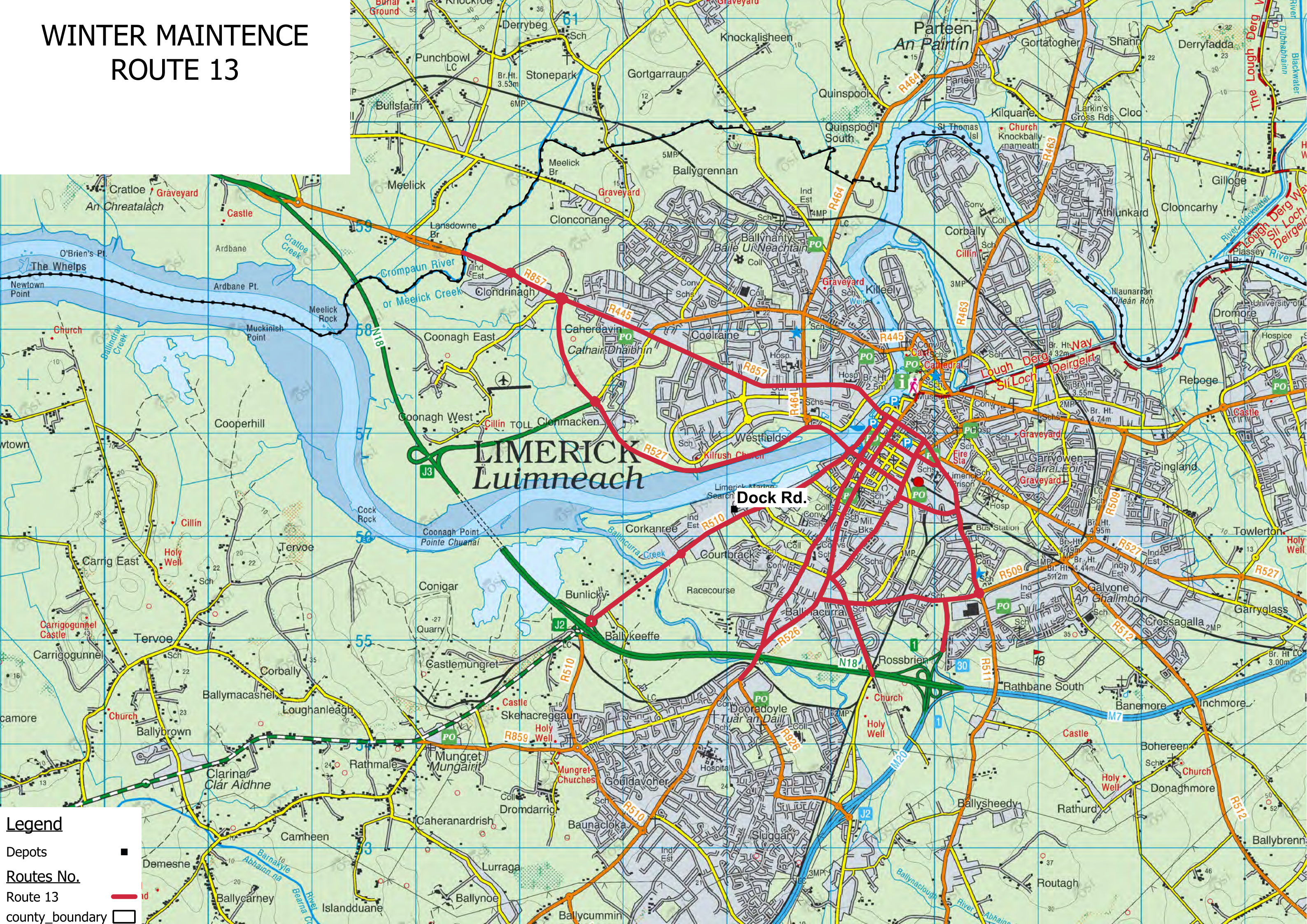
## ROUTE 12





# WINTER MAINTENCE

## ROUTE 13



**Legend**

Depots ■

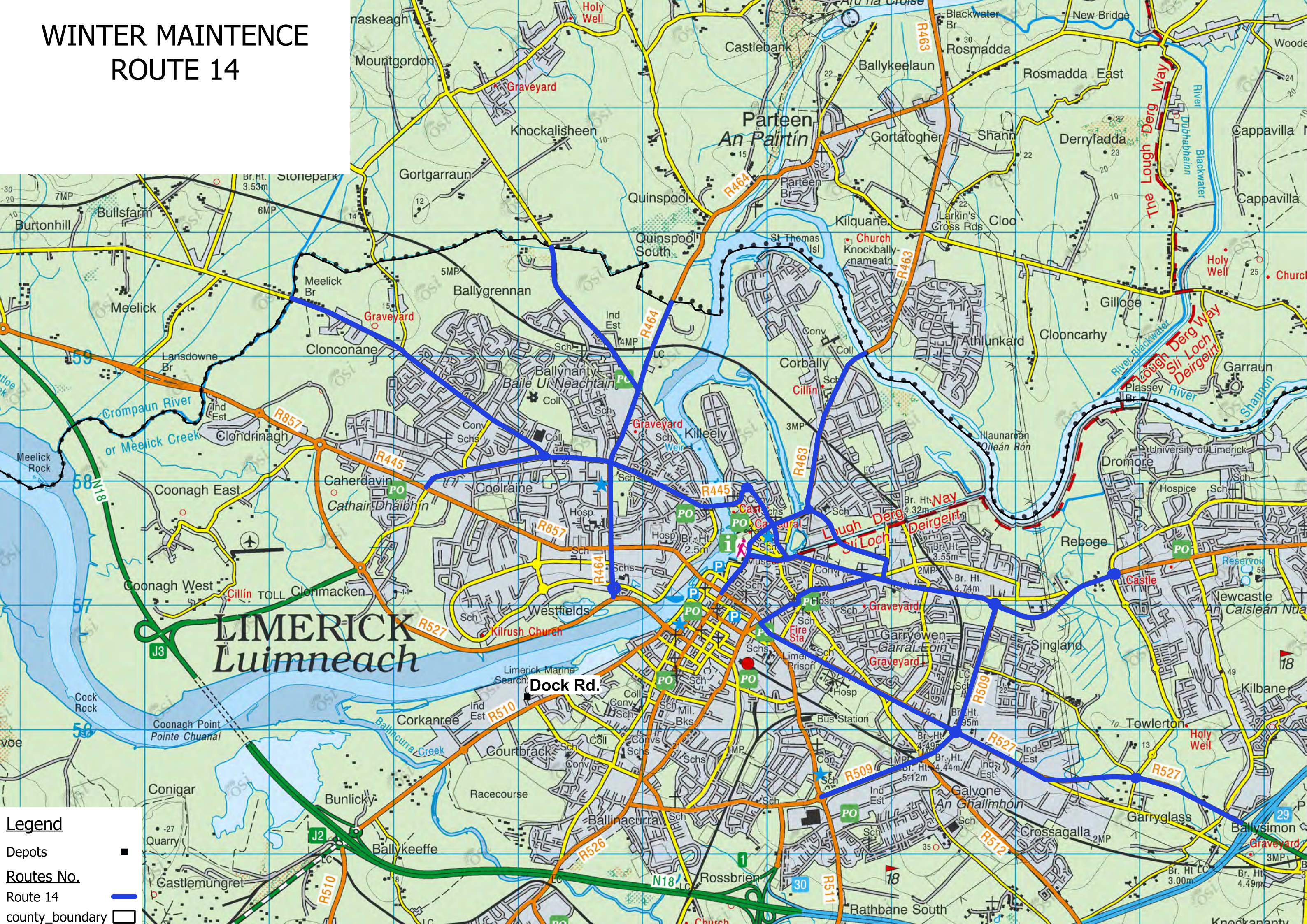
**Routes No.**

Route 13 —

county\_boundary □



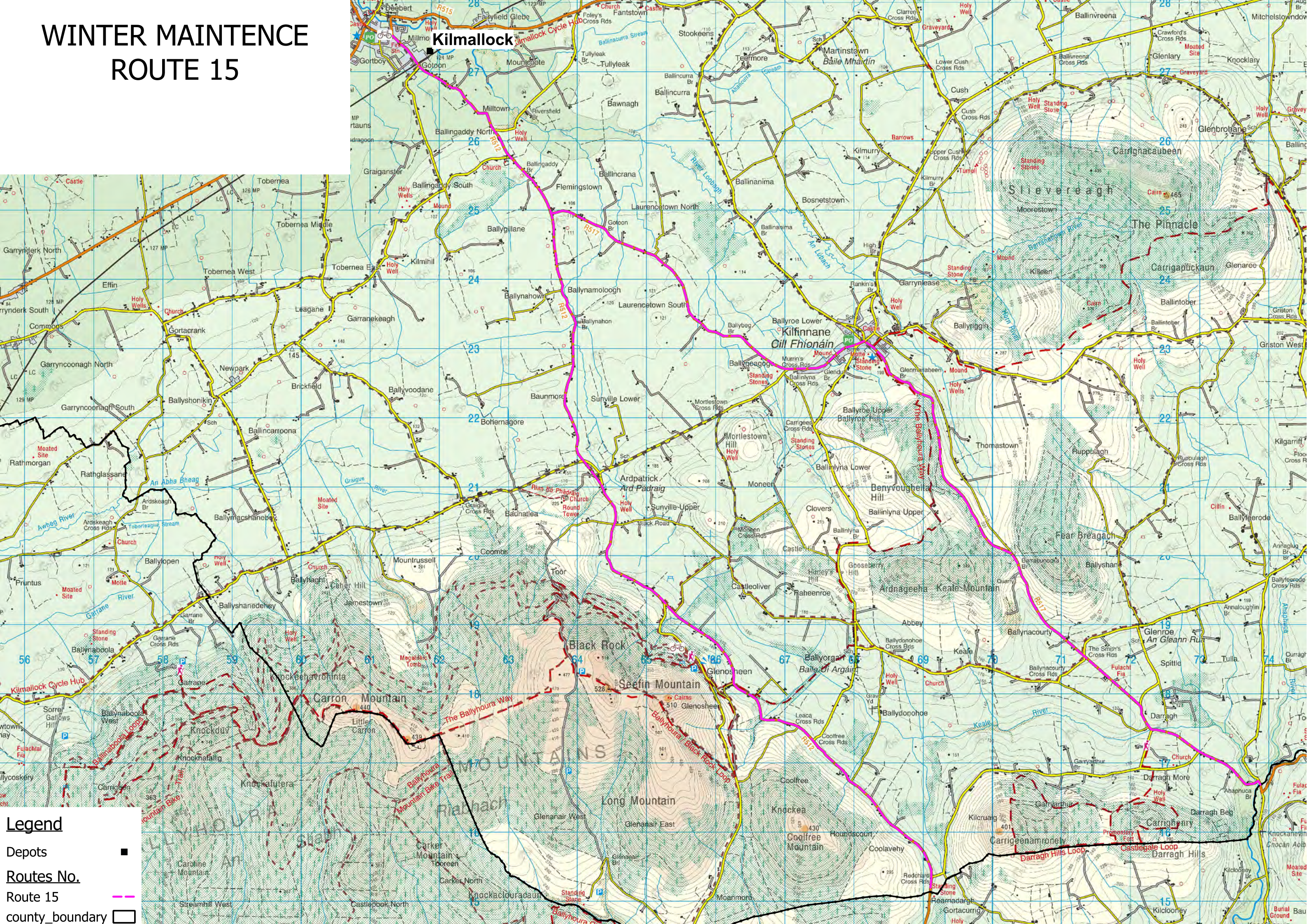
# WINTER MAINTENANCE ROUTE 14





# WINTER MAINTNENCE

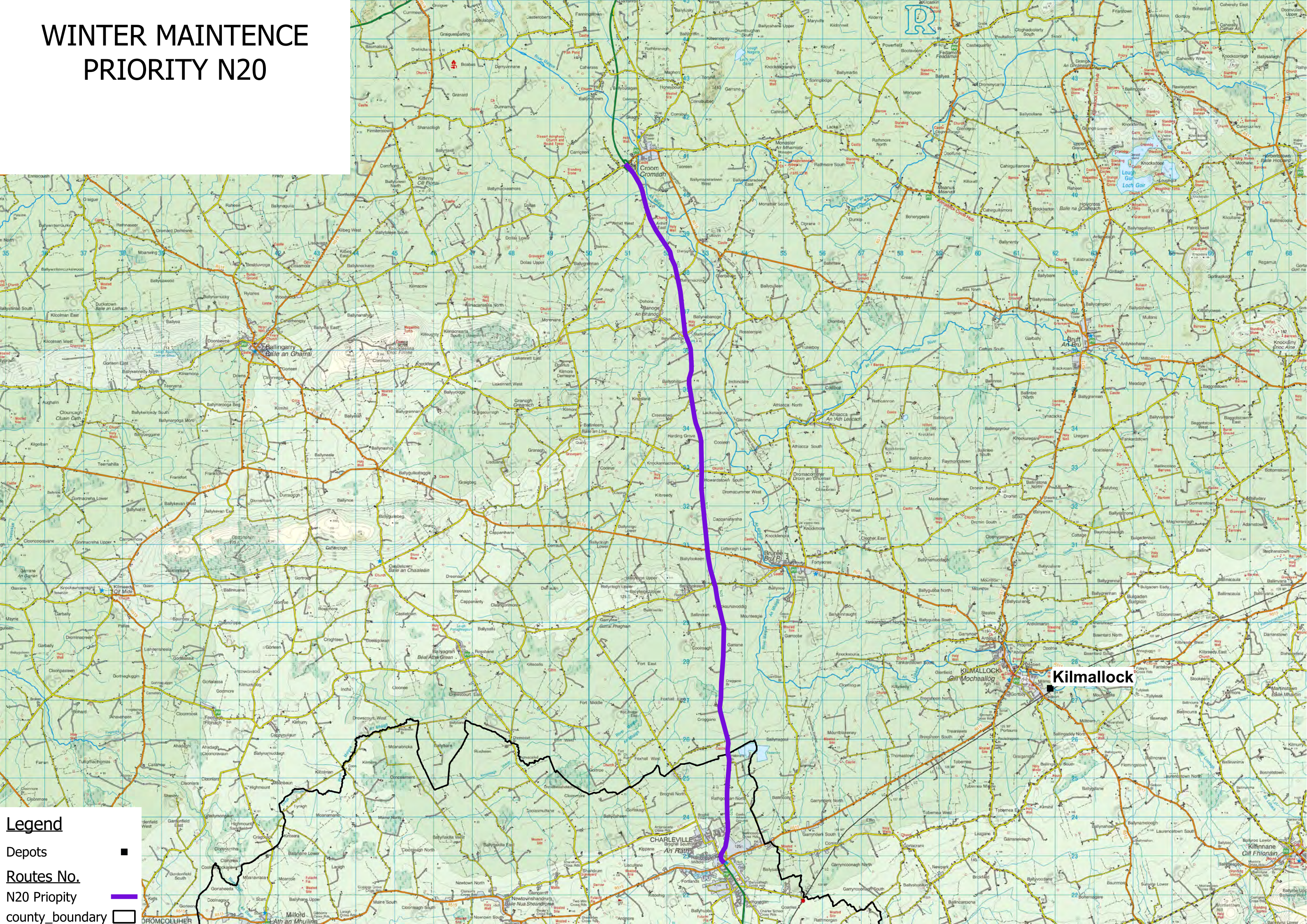
## ROUTE 15





# WINTER MAINTNENCE

## PRIORITY N20



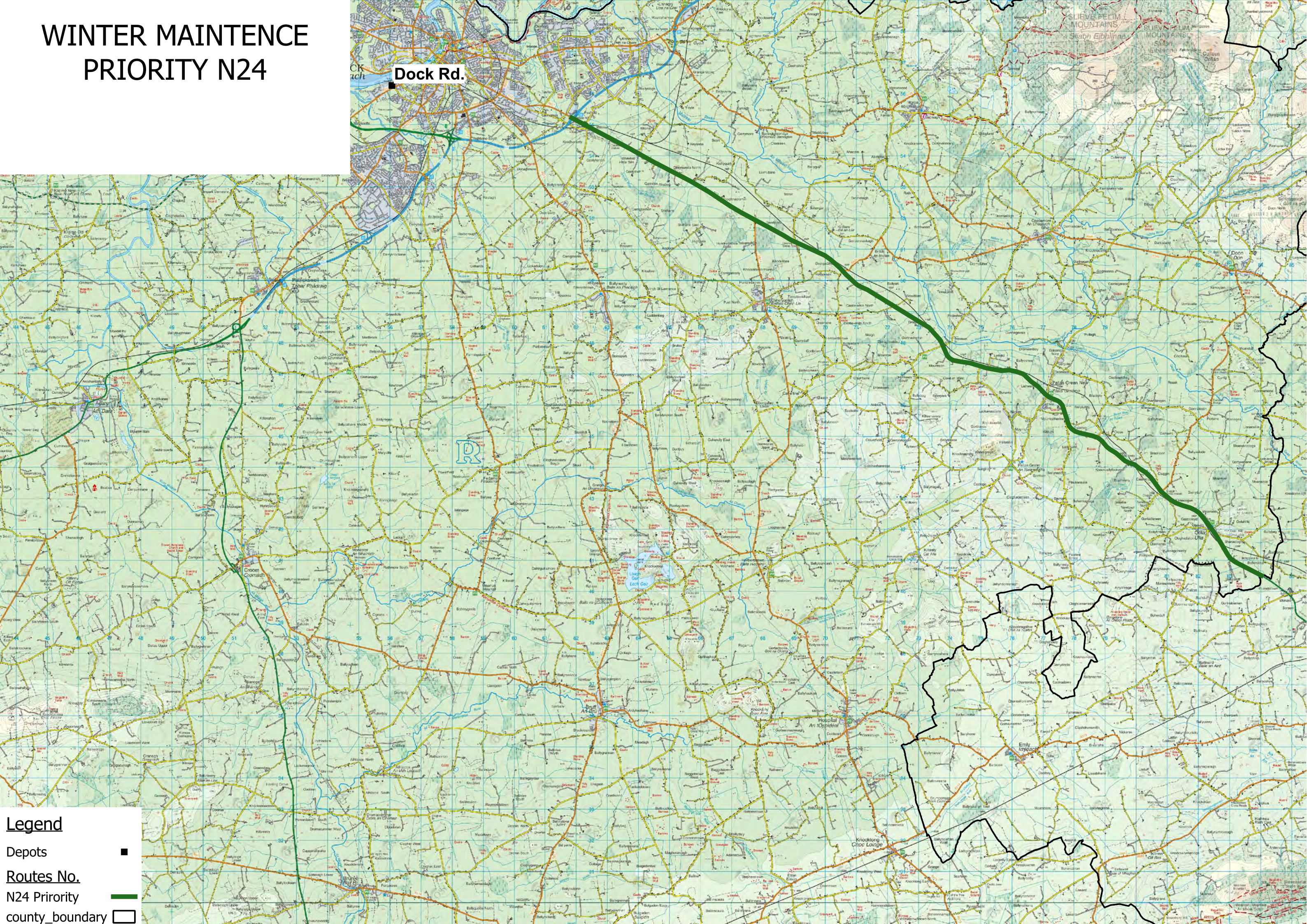






# WINTER MAINTNENCE

## PRIORITY N24



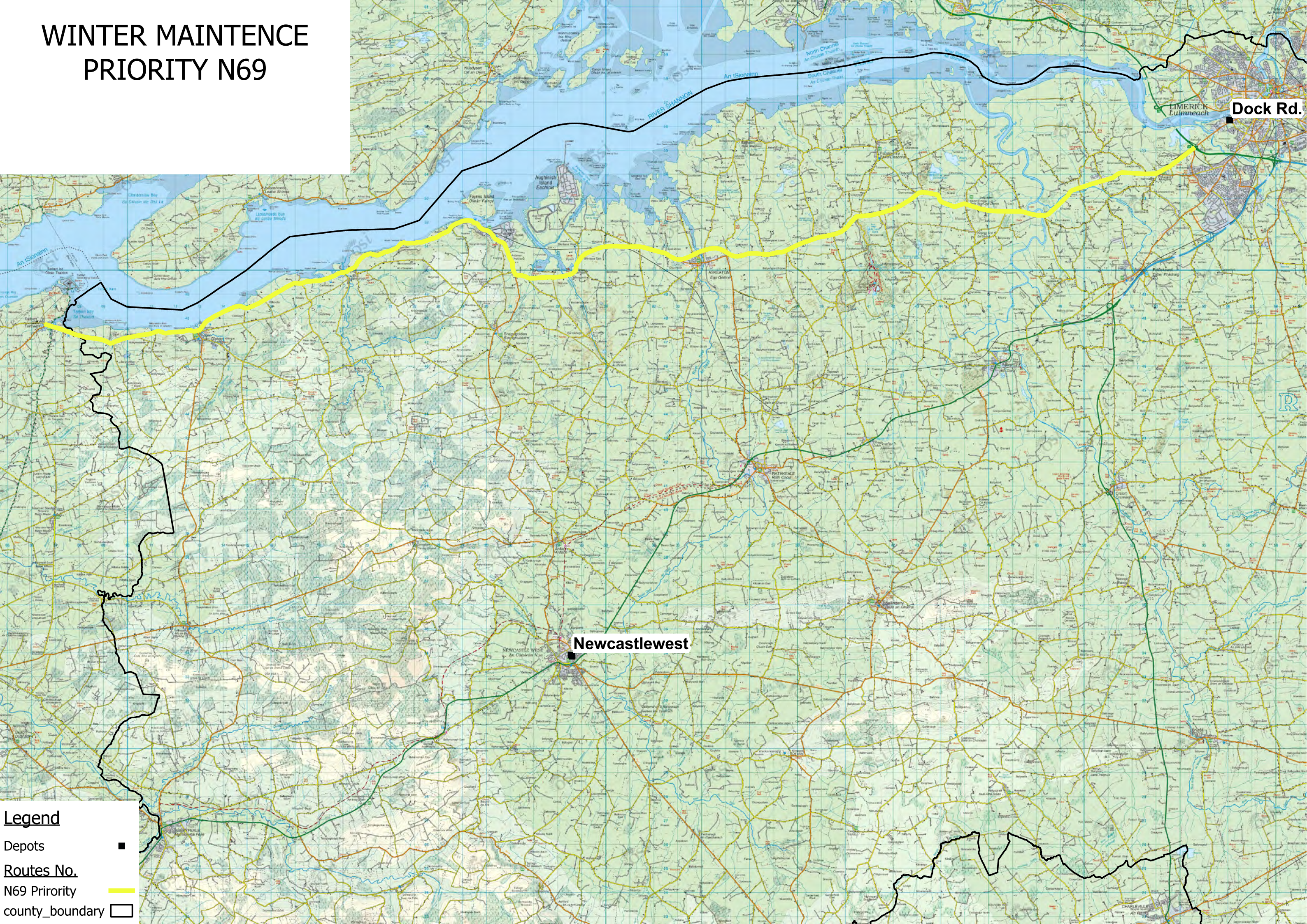
**Legend**

- Depots
- Routes No.
- N24 Priority
- county\_boundary




# WINTER MAINTENCE

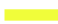
## PRIORITY N69



**Legend**

Depots 

Routes No.

N69 Priority 

county\_boundary 