

Active Travel Limerick

Newsletter #45

3rd of September 2025

#ActiveTravelLimerick



Comhairle Cathrach
& Contae **Luimnigh**

Limerick City
& County Council



Údarás Náisiúnta Iompair
National Transport Authority



Active Travel Limerick News

“Section 38”

Active Travel Limerick are planning to carry out proposed Section 38 works at **Green Hill (L-10199); Garryowen Road, (L-10183), Pennywell & Cathedral Court (L-10168); Downey Street (L-10169) Ball Alley place (Sarsfield Court L-10182); South Claughan Road (L-10178) at Limerick City.**

The scheme comprises of:

- Five new pedestrian crossings.
- Build outs for traffic calming purpose and permit parking improvement through out.
- New and removal of permit parking at various locations throughout the scheme.
- Reconfiguration of traffic flow to a one-way system at **Pennywell Upper, Ball Alley Place (Sarsfield Court) and Cathedral Court.**
- Junction tightening at various locations throughout the scheme.
- Visual elements at 2 school locations by way of bollards and road markings.
- 2 new bus stops at **South Claughan Road.**
- New footpath construction at various locations throughout the scheme.



More on the Section 38 proposed works for this scheme on the next page.

Active Travel Limerick News

“Section 38” continued

The Section 38 proposed works for **Green Hill (L-10199); Garryowen Road, (L-10183), Pennywell & Cathedral Court (L-10168); Downey Street (L-10169) Ball Alley place (Sarsfield Court L-10182); South Claughan Road (L-10178) at Limerick City.**

Drawings and particulars of the proposed project are available for inspection at:

1. Limerick City and County Council, City Hall, Merchants Quay (V94 EH90)
2. Limerick City and County Council, County Hall, Dooradoyle Road, Dooradoyle, Limerick (V94 WV78)
3. Limerick City and County Council, Aras Mainchin Seoighe Area Office, Kilmallock, Co. Limerick (V35 K497)

And may be inspected during normal office hours from Friday 22nd August to Friday 19th September 2025 Inclusive.



Safe Routes to Schools

“Patrickswell”

Active Travel Limerick Safe Routes to Schools works in **Patrickswell, (L-1442), Co. Limerick** are now substantially completed with road marking and planting still outstanding. The funding for this project is made up of funds from Active Travel and GMA (General Municipal Allocation).

The works will include the following road amendments adjacent to **Patrickswell National School**:

- A raised pedestrian crossing.
- Build outs for traffic calming purposes.
- Footpath widening.
- New bus bay.



Safe Routes to Schools

“Athea”

Active Travel Limerick Safe Routes to Schools in **Athea (R-523)** are now substantially completed with road marking and planting outstanding.

The works will include the following road amendments adjacent to **Athea National School**:

- Introduction of chicanes/build-outs on eastern approach to village, as a traffic calming measure.
- Addition of one streetlight plus re-positioning of another one.
- Re-positioning of pedestrian crossing nearer to school gates.
- Reconfiguration of parking spaces outside cemetery.
- Re-positioning of bus bay and Accessible parking space at front of school.
- Introduction of ‘School Zone’ road markings and pencil bollards.



Safe Routes to Schools

“Murroe”

Active Travel Limerick Safe Routes to Schools in **Murroe (R-506, L-1127 & L-1161)** are now substantially completed with road marking and planting outstanding.

The works will introduce the following road amendments adjacent to **Scoil Mhuire Murroe**:

- Enlarged build-out areas/footpaths adjacent to school gates. Introduction of formalised “Type C” raised pedestrian crossing adjacent to school.
- Introduction of two blue badge accessible parking spaces at front of school.
- Reconfiguration of traffic flow around island junction to a one-way system.
- Widened footpath on western approach to junction, with accessible bus stop and shelter.



TUS Moylish to City Centre Scheme

The following works are anticipated to be carried out as part of the TUS Moylish to City Centre Scheme over the coming weeks:

- **Mayorstone Garda Station:** Works ongoing, including removal of old footpaths, kerbing, ducting, and pouring new footpath sections.
- **Thomond Park (Outside Stadium):** Demolition of the old boundary wall continues. New mesh-reinforced entrance being poured. Footpath works progressing towards **Hassett's Cross**.
- **Thomond Park Plaza Area:** Carriageway kerbing installation ongoing. Underground services are being lowered in preparation for paving works.

Note: Two way traffic will be maintained, apart for very short intervals where plant & material will be going into the works area via the site access points, flagmen will be present during these operations.



Mill Road Scheme

The works at Mill Road is now complete in time for the pupils returning to school. The scheme provides hundreds of children with a safer, easier route for their daily journeys.

The works included:

- **1.4km** off-road shared pedestrian and cycle paths.
- Raised crossings and traffic calming measures.
- Improved road alignment and drainage.
- Energy-efficient LED lighting.
- Over **280** new trees planted.

The project was shaped by the local community with nearby schools, residents and the Limerick Diocese all playing a vital role in guiding the design.

[Click here or on the image below to view a video of the scheme compiled by the Mill Road contractor Shareridge on their LinkedIn page](#)



Towns and Villages Schemes

Note: The Active Travel team are tasked with providing new and upgraded pedestrian infrastructure across Limerick City & County Council's Metropolitan and Municipal districts.

The following works at **Loghill, Co. Limerick** are substantially completed with fencing being completed shortly.

The scheme included a footpath to improve connectivity from **Gerald Griffin National School** to **Woodlawn Estate** with associated drainage and public lighting.

Newly
Constructed

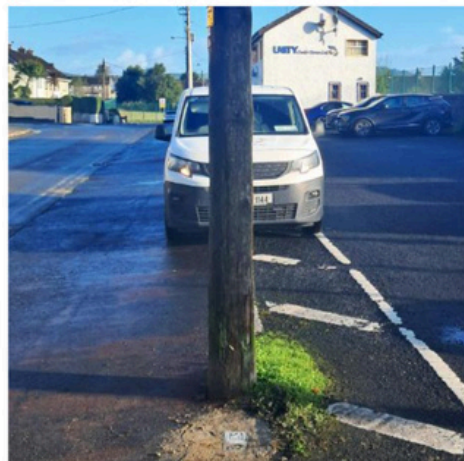


We extend our sincere gratitude to our colleagues in the **Adare Rathkeale Operations team of the District Roads Area** for their work in completing these schemes.

Bus Stop Sockets

The Active Travel Limerick team is currently installing new bus stop sockets in **Moyross, Ballynanty, Shelbourne, and Kileely**, along the **303** and **306** bus routes.

Several bus stop sockets have already been installed, as shown in the photos below. The bus stop poles will be put in place over the coming weeks.



ACTIVE TRAVEL LIMERICK

We are always happy to help with any queries
you may have on our Active Travel projects



Active Travel Limerick

Email: activetravel@limerick.ie

PHONE 061 556000

WWW.LIMERICK.IE

WWW.NATIONALTRANSPORT.IE