

Active Travel Limerick

Newsletter #42

24th of July 2025

#ActiveTravelLimerick



Comhairle Cathrach
& Contae **Luimnigh**

Limerick City
& County Council



Údarás Náisiúnta Iompair
National Transport Authority



Active Travel Limerick News

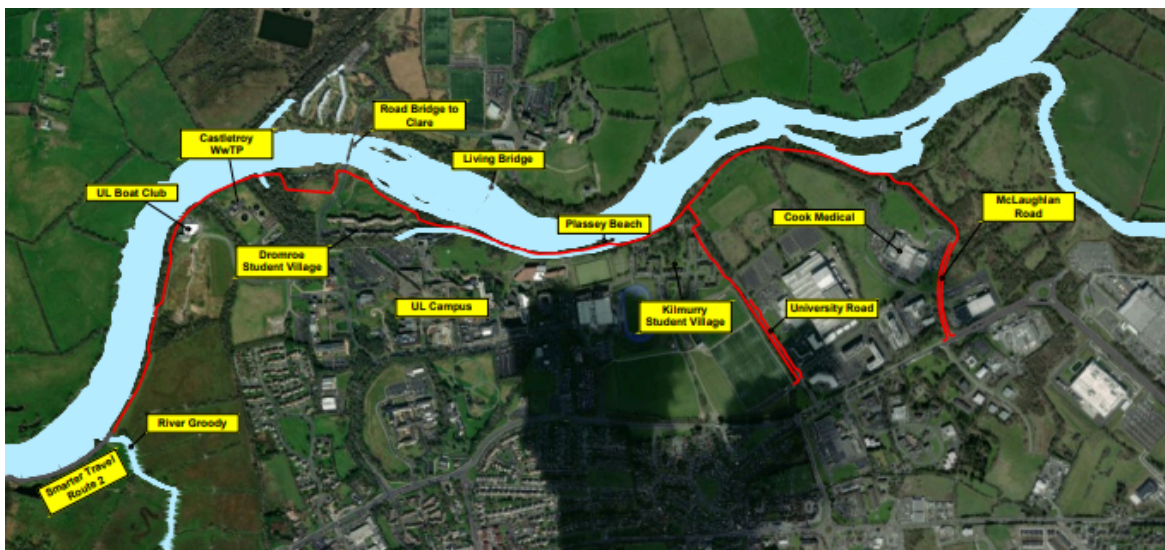
“UL to National Technology Park (NTP)”

Limerick City and County Council’s Active Travel Department proposes to seek approval from An Coimisiún Pleanála for the development of the proposed **Limerick City Greenway (UL to NTP)**. The scheme commences west of the existing **River Groody Bridge** and the Greenway runs for approximately **3.3km** to **McLaughlan Road** where it transitions into Active Travel Infrastructure consisting of separate footpaths and cycleways.

The proposed development will consist of:

- Construction of **3.9km** of haul roads which will become the base of proposed Greenway.
- Construction of two new bridges, replacement of three concrete bridge decks with new steel decks and 25 culverts.
- Landscaping of **305 native Irish trees**, hedgerows, riparian grasses and pollinator plants in accordance with the National Biodiversity Action Plan.

[Click here to find out more information about the proposed scheme on MyPoint which will go live Friday the 25th of July 2025](#)



More information on the UL to NTP proposed scheme on the next page

Active Travel Limerick News

“UL to National Technology Park (NTP)”

Drawings and particulars of the proposed project are available for inspection at:

1. Limerick City and County Council, City Hall, Merchants Quay (V94 EH90)
2. Limerick City and County Council, County Hall, Dooradoyle Road, Limerick (V94 WV78)

And may be inspected during office hours from Friday the 25th of July to Monday the 8th of September inclusive.

Submissions and observations in relation to the proposed development may be made in writing to **An Coimisiún Pleanála, 64 Marlborough Street, Dublin, D01 V902** on or before 5.30pm Monday the 8th of September.



Active Travel Limerick News

“Limerick’s Three Pedestrian Bridges”

Active Travel Limerick recently issued a tender for consultancy services for the design of three pedestrian bridges. The tender submission deadline has now closed and the tender assessment process is currently underway. The successful tenderer will be formally appointed in August.

- **Shannon Active Travel Bridge** (new structure)
- **Abbey Bridge** (new structure)
- **Sylvester O’Halloran Bridge** (replacement structure)

These new bridges are an exciting part of a bigger plan to connect Limerick’s parks, neighbourhoods, and public spaces through safe and scenic walking and cycling routes.

More than river crossings, the bridges will serve as inviting public spaces that bring people closer to the water, fostering leisure, social interaction, and a deeper connection with the natural landscape.

Together, the bridges will help make getting around the city easier and more enjoyable, while also supporting Limerick’s journey toward becoming a greener, more vibrant, and more connected place to live and visit.



Safe Routes to Schools

“Murroe”

Active Travel Limerick Safe Routes to Schools has commenced works in **Murroe (R-506, L-1127 & L-1161)**.

The works will introduce the following road amendments adjacent to **Scoil Mhuire Murroe**:

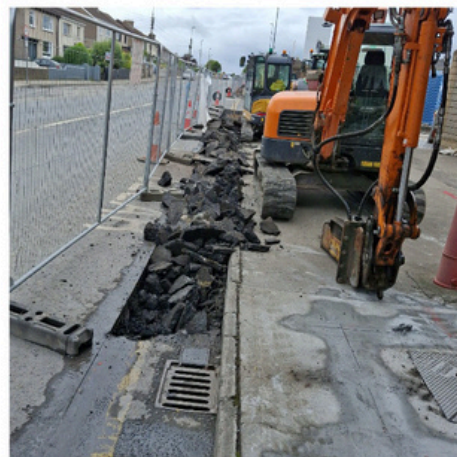
- Enlarged build-out areas/footpaths adjacent to school gates.
- Introduction of formalised “Type C” raised pedestrian crossing adjacent to school.
- Introduction of two blue badge accessible parking spaces at front of school.
- Reconfiguration of traffic flow around island junction to a one-way system.
- Widened footpath on western approach to junction, with accessible bus stop and shelter.



TUS Moylish to City Centre Scheme

The following works are anticipated to be carried out as part of the TUS Moylish to City Centre Scheme over the coming weeks:

- Continued breakout of existing footpaths to prepare for upgrades.
- Installation of new ducting and road gullies to improve drainage and infrastructure
- Placement of new precast kerbs to define footpaths and the cycle track
- Installation of tactile paving.
- Pouring and finishing new sections of footpaths.



Mill Road Scheme

The following works are anticipated to be carried out as part of the Mill Road Scheme over the coming weeks:

- Continue installation of signposts across the entire scheme.
- Carry out snagging works throughout the scheme.
- Fill joints between stone-faced walls.
- Replace existing chamber cover on Mill Road near **Scoil Íde**.
- Clean out all gulleys across the site.



Towns and Villages Schemes

Note: The Active Travel team are tasked with providing new and upgraded pedestrian infrastructure across Limerick City & County Council's Metropolitan and Municipal districts.

The following works at **Feohanagh** have commenced the scheme will include the following:

- Upgrade of **476metres** of existing footpath.
- Construct **1.8metres** wide footpath.
- Set back boundaries by **2 metres** approx.
- Installation of road drainage pipework and gullies.
- Erect fencing.

Newly
Constructed



Newly
Constructed



We extend our sincere gratitude to our colleagues in the **Newcastle West Operations team of the District Roads Area** for their work in completing these schemes.

Bus Shelter

The construction of the second new bus shelter and associated works will commence shortly in **Foynes, Co. Limerick**.

The image displayed below is the location of the new bus shelter.



ACTIVE TRAVEL LIMERICK

We are always happy to help with any queries
you may have on our Active Travel projects



Active Travel Limerick

Email: activetravel@limerick.ie

PHONE 061 556000

WWW.LIMERICK.IE

WWW.NATIONALTRANSPORT.IE