



Comhairle Cathrach  
& Contae **Luimnigh**

---

**Limerick** City  
& County Council

## Air Quality Report for Limerick

### February 2025

## **Introduction**

Limerick City and County Council currently has air quality monitors operating at three locations in the metropolitan area of Limerick to provide live indicative air quality data to the public. These monitors are located in Mungret, Castletroy and O'Connell Street.

The monitors measure particulate matter and gases, including nitrogen dioxide (NO<sub>2</sub>), sulphur dioxide (SO<sub>2</sub>), carbon monoxide (CO) and ozone (O<sub>3</sub>). Real time data from these monitors can be accessed at [www.airqweb.com](http://www.airqweb.com).

The following report is a presentation of the results of that monitoring.

### ***Particulate matter***

Particulate matter (PM) which is commonly used as an indicator of dust particles in air, including total suspended particulates, PM<sub>10</sub>, PM<sub>2.5</sub> and PM<sub>1</sub>.

PM<sub>10</sub> is particulate matter 10 microns or less in diameter, PM<sub>2.5</sub> is particulate matter 2.5 microns or less in diameter and PM<sub>1</sub> is particulate matter 1 micron or less. PM<sub>2.5</sub> is generally described as fine particulates. As a comparison, the width of a human hair is around 100 microns so approximately 40 PM<sub>2.5</sub> will fit along its width.

The particulate matter indices that are of primary concern for human health are PM<sub>10</sub>, PM<sub>2.5</sub> and PM<sub>1</sub>. These are the sub-fraction of particles, which can penetrate into the alveoli (air sacs) in the lungs. Chronic exposure to particles contributes to the risk of developing cardiovascular and respiratory diseases, as well as of lung cancer.

### ***Nitrogen dioxide***

Nitrogen dioxide (NO<sub>2</sub>) is produced during combustion at high temperatures with the main sources in Ireland being vehicles and power stations. Short-term exposure to NO<sub>2</sub> is linked to adverse respiratory effects including airway inflammation in healthy people and increased respiratory symptoms in asthmatics. Long-term exposure is associated with increased risk of respiratory infections in children.

***Sulphur dioxide***

Sulphur dioxide (SO<sub>2</sub>) is a gas, which is formed when sulphur-containing fuels (e.g. coal and oil) are burned in power stations, domestically and elsewhere. Impacts of high concentrations of SO<sub>2</sub> include temporary breathing difficulties for those that suffer from respiratory conditions such as asthma. Long-term exposure to SO<sub>2</sub> can aggravate existing cardiovascular disease and respiratory illness.

***Carbon monoxide***

Carbon monoxide (CO) is a colourless gas, formed from incomplete oxidation during combustion of fuel. Outdoor sources of CO are mainly from vehicles with concentrations generally highest in areas of traffic congestion. CO enters the bloodstream through the lungs and impairs the delivery of oxygen to the body's organs and tissues. The health impact of CO concentrations in ambient air is most serious for those suffering cardiovascular disease such as angina.

***Ozone***

Ozone (O<sub>3</sub>) is formed as a secondary pollutant in the troposphere from the chemical reaction of NO<sub>x</sub> (the two pollutants nitric oxide, NO, and nitrogen dioxide, NO<sub>2</sub>), CO and volatile organic compounds (VOCs) in the presence of sunlight. Ozone can also be present in the troposphere due to downward flux from the ozone-rich stratosphere, where it occurs naturally and has a role in absorbing harmful UV radiation. Ground-level ozone is depleted through reactions with traffic-emitted pollutants and so levels of ozone are higher in rural areas than in urban areas.

Ozone irritates the eyes, nose, throat and lungs. It can destroy throat and lung tissue leading to a decrease in lung function and respiratory symptoms such as coughing, shortness of breath, aggravated asthma and other lung diseases.

## Air Quality Standards

The CAFE (Clean Air for Europe) Directive sets air quality standards for member states in Europe and has been transposed into Irish legislation by the **Air Quality Standards Regulations**. The limit values for particulates are given below.

Pollutant	Objective	Averaging Period	Limit Value	Basis of Application of the Limit Value	Limit Value Attainment Date
PM <sub>10</sub>	Protection of human health	24-hours	50 µg/m <sup>3</sup>	Not to be exceeded more than 35 times in a calendar year	1 Jan 2005
	Protection of human health	Calendar year	40 µg/m <sup>3</sup>	Annual mean	1 Jan 2005
PM <sub>2.5</sub>	Protection of human health	Calendar year	25 µg/m <sup>3</sup>	Annual mean	1 Jan 2005
	Protection of human health	Calendar year	20 µg/m <sup>3</sup>	Annual mean	1 Jan 2020
NO <sub>2</sub>	Protection of human health	1-hour	200 µg/m <sup>3</sup>	Not to be exceeded more than 18 times in a calendar year	1 Jan 2010
	Protection of human health	Calendar year	40 µg/m <sup>3</sup>	Not to be exceeded more than 18 times in a calendar year	1 Jan 2010

SO <sub>2</sub>	Protection of human health	1-hour	150 µg/m <sup>3</sup>	Not to be exceeded more than 24 times in a calendar year	1 Jan 2005
	Protection of human health	24-hours	125 µg/m <sup>3</sup>	Not to be exceeded more than 3 times in a calendar year	1 Jan 2005
CO	Protection of human health	Maximum 8-hour mean*	10mg/m <sup>3</sup>	60% of the hourly running 8-hour averages	1 Jan 2005

\*The maximum daily 8-hour mean concentration is selected by examining eight-hour running averages, calculated from hourly data.

The World Health Organisation (WHO) provides air quality guidelines as follows:

Pollutant	Averaging period	2005 AQGs	2021 AQGs
PM <sub>10</sub>	Calendar year	20 µg/m <sup>3</sup>	15 µg/m <sup>3</sup>
	24-hours <sup>a</sup>	50 µg/m <sup>3</sup>	45 µg/m <sup>3</sup>
PM <sub>2.5</sub>	Calendar year	10 µg/m <sup>3</sup>	5 µg/m <sup>3</sup>
	24-hours <sup>a</sup>	25 µg/m <sup>3</sup>	15 µg/m <sup>3</sup>
NO <sub>2</sub>	Calendar year	40 µg/m <sup>3</sup>	10 µg/m <sup>3</sup>
	24-hour <sup>a</sup>	-	25 µg/m <sup>3</sup>
SO <sub>2</sub>	24-hour <sup>a</sup>	20 µg/m <sup>3</sup>	40 µg/m <sup>3</sup>
O <sub>3</sub>	Peak season <sup>b</sup>	-	60 µg/m <sup>3</sup>
	8-hour <sup>a</sup>	100 µg/m <sup>3</sup>	100 µg/m <sup>3</sup>
CO	24-hour <sup>a</sup>	-	4 µg/m <sup>3</sup>

<sup>a</sup> 99th percentile (i.e. 3–4 exceedance days per year).

<sup>b</sup> Average of daily maximum 8-hour mean O<sub>3</sub> concentration in the six consecutive months with the highest six-month running- average O<sub>3</sub> concentration.

Note: Annual and peak season is long-term exposure, while 24 hour and 8 hour is short-term exposure.

## Air Quality in February

The graphs on the following pages show the 24-hourly mean values of Total Particulates, PM<sub>10</sub>, PM<sub>2.5</sub>, PM<sub>1</sub>, NO<sub>2</sub>, SO<sub>2</sub>, CO and ozone for the month of February at the three monitoring sites.

The monitoring results for particulate matter have been filtered out where the humidity at the station has been measured as greater than 85 %, as per a recommendation by the EPA<sup>1</sup>. The relevant air quality standards or WHO guideline values for PM<sub>10</sub>, PM<sub>2.5</sub>, NO<sub>2</sub>, SO<sub>2</sub> and CO also indicated. There are no standards currently set for Total Particulates, PM<sub>1</sub> and ozone.

Further information on air quality and health can be found at <http://www.epa.ie/air/quality/index/#d.en.51478>.

The long-term mean values for particulate matter and gases (NO<sub>2</sub>, SO<sub>2</sub>, CO and ozone) since the monitors were installed are shown in the table below and compared with the annual mean limits and guidelines.

---

<sup>1</sup> Limerick City and County Council included humidity and temperature sensors to the monitoring suite on 24<sup>th</sup> January 2018.

Parameter	Location	Measured long term mean ( $\mu\text{g}/\text{m}^3$ )	WHO annual mean guidelines ( $\mu\text{g}/\text{m}^3$ )	EU CAFÉ Directive annual mean limit ( $\mu\text{g}/\text{m}^3$ )
<b>Total Particulates</b> Feb 2024 – Feb 2025 O Connell St Castletroy Mungret	O'Connell St	15 $\mu\text{g}/\text{m}^3$	None specified	None specified
	Castletroy	13 $\mu\text{g}/\text{m}^3$		
	Mungret	16 $\mu\text{g}/\text{m}^3$		
<b>PM<sub>10</sub></b> Feb 2024 – Feb 2025 O Connell St Castletroy Mungret	O'Connell St	11 $\mu\text{g}/\text{m}^3$	20 $\mu\text{g}/\text{m}^3$	40 $\mu\text{g}/\text{m}^3$
	Castletroy	9 $\mu\text{g}/\text{m}^3$		
	Mungret	11 $\mu\text{g}/\text{m}^3$		
<b>PM<sub>2.5</sub></b> Feb 2024 – Feb 2025 O Connell St Castletroy Mungret	O'Connell St	8 $\mu\text{g}/\text{m}^3$	5 $\mu\text{g}/\text{m}^3$	20 $\mu\text{g}/\text{m}^3$
	Castletroy	6 $\mu\text{g}/\text{m}^3$		
	Mungret	6 $\mu\text{g}/\text{m}^3$		
<b>PM<sub>1</sub></b> Feb 2024 – Feb 2025 O Connell St Castletroy Mungret	O'Connell St	5 $\mu\text{g}/\text{m}^3$	None specified	None specified
	Castletroy	4 $\mu\text{g}/\text{m}^3$		
	Mungret	4 $\mu\text{g}/\text{m}^3$		
<b>NO<sub>2</sub></b> Feb 2024 – Feb 2025 O Connell St Castletroy Mungret	O'Connell St	15 $\mu\text{g}/\text{m}^3$	10 $\mu\text{g}/\text{m}^3$	40 $\mu\text{g}/\text{m}^3$
	Castletroy	12 $\mu\text{g}/\text{m}^3$		
	Mungret	10 $\mu\text{g}/\text{m}^3$		
<b>SO<sub>2</sub></b> Feb 2024 – Feb 2025 O Connell St Castletroy Mungret	O'Connell St	10 $\mu\text{g}/\text{m}^3$	None specified	None specified
	Castletroy	7 $\mu\text{g}/\text{m}^3$		
	Mungret	7 $\mu\text{g}/\text{m}^3$		
<b>CO</b> Feb 2024 – Feb 2025 O Connell St Castletroy Mungret	O'Connell St	0.18 $\mu\text{g}/\text{m}^3$	None specified	None specified
	Castletroy	0.12 $\mu\text{g}/\text{m}^3$		
	Mungret	0.25 $\mu\text{g}/\text{m}^3$		
<b>Ozone</b> Feb 2024 – Feb 2025 O Connell St Castletroy Mungret	O'Connell St	45 $\mu\text{g}/\text{m}^3$	None specified	None specified
	Castletroy	51 $\mu\text{g}/\text{m}^3$		
	Mungret	56 $\mu\text{g}/\text{m}^3$		

The maximum daily mean values for particulate matter, for February, are shown in the table below and compared with the WHO air quality guidelines where they exist.

Pollutant	Total Particulates	PM <sub>10</sub>	PM <sub>2.5</sub>	PM <sub>1</sub>
Averaging period	-	24-hours	24-hours	-
Guideline	None	45 µg/m <sup>3</sup>	15 µg/m <sup>3</sup>	None
Maximum Feb '25 O'Connell Street	31 µg/m <sup>3</sup> 20/02/25	24 µg/m <sup>3</sup> 20/02/25	20 µg/m <sup>3</sup> 20/02/25	12 µg/m <sup>3</sup> 20/02/25
Maximum Feb '25 Castletroy	20 µg/m <sup>3</sup> 20/02/25	18 µg/m <sup>3</sup> 20/02/25	16 µg/m <sup>3</sup> 20/02/25	11 µg/m <sup>3</sup> 20/02/25
Maximum Feb '25 Mungret	28 µg/m <sup>3</sup> 20/02/25	24 µg/m <sup>3</sup> 20 /02/25	19 µg/m <sup>3</sup> 20/02/25	13 µg/m <sup>3</sup> 20/02/25

There were exceedances of the WHO guideline values for particulate PM<sub>2.5</sub> at the Castletroy, Mungret, and O Connell St monitoring sites on the 20/02/25.

The maximum recorded short-term mean values for gases (NO<sub>2</sub>, SO<sub>2</sub> and ozone), for February, are shown in the table below and compared with the WHO air quality guidelines.

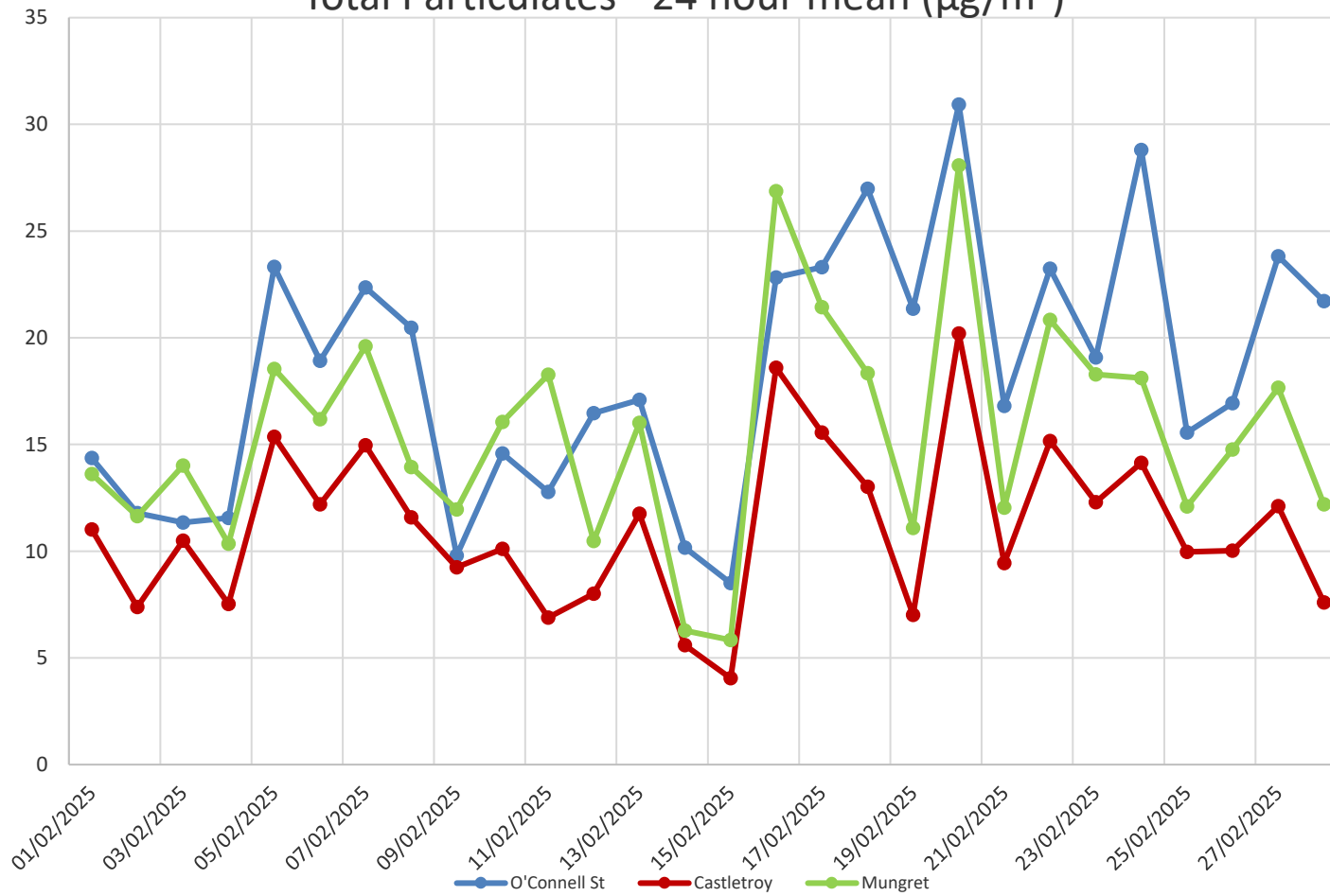
Pollutant	NO <sub>2</sub>	SO <sub>2</sub>	Ozone
Averaging period	1-hour	10-minutes <sup>2</sup>	8-hours
Guideline	200 µg/m <sup>3</sup>	500 µg/m <sup>3</sup>	100 µg/m <sup>3</sup>
Maximum Feb'25 - O'Connell Street	51 µg/m <sup>3</sup> 05/02/25 18:00 – 19:00	211 µg/m <sup>3</sup> 28/02/25 02:30 – 02:45	55 µg/m <sup>3</sup> 02/02/25 00:30 – 08:30
Maximum Feb'25 – Castletroy	68 µg/m <sup>3</sup> 05/02/25 17:30 – 18:30	139 µg/m <sup>3</sup> 05/02/25 18:00 – 18:15	79 µg/m <sup>3</sup> 23/02/25 05:15 – 13:15
Maximum Feb '25 - Mungret	36 µg/m <sup>3</sup> 05/02/25 08:00 – 09:00	126 µg/m <sup>3</sup> 05/02/25 20:30 - 20:45	69 µg/m <sup>3</sup> 26/02/25 03:00 - 11:00

There were no exceedances of the WHO guideline values for gases in February.

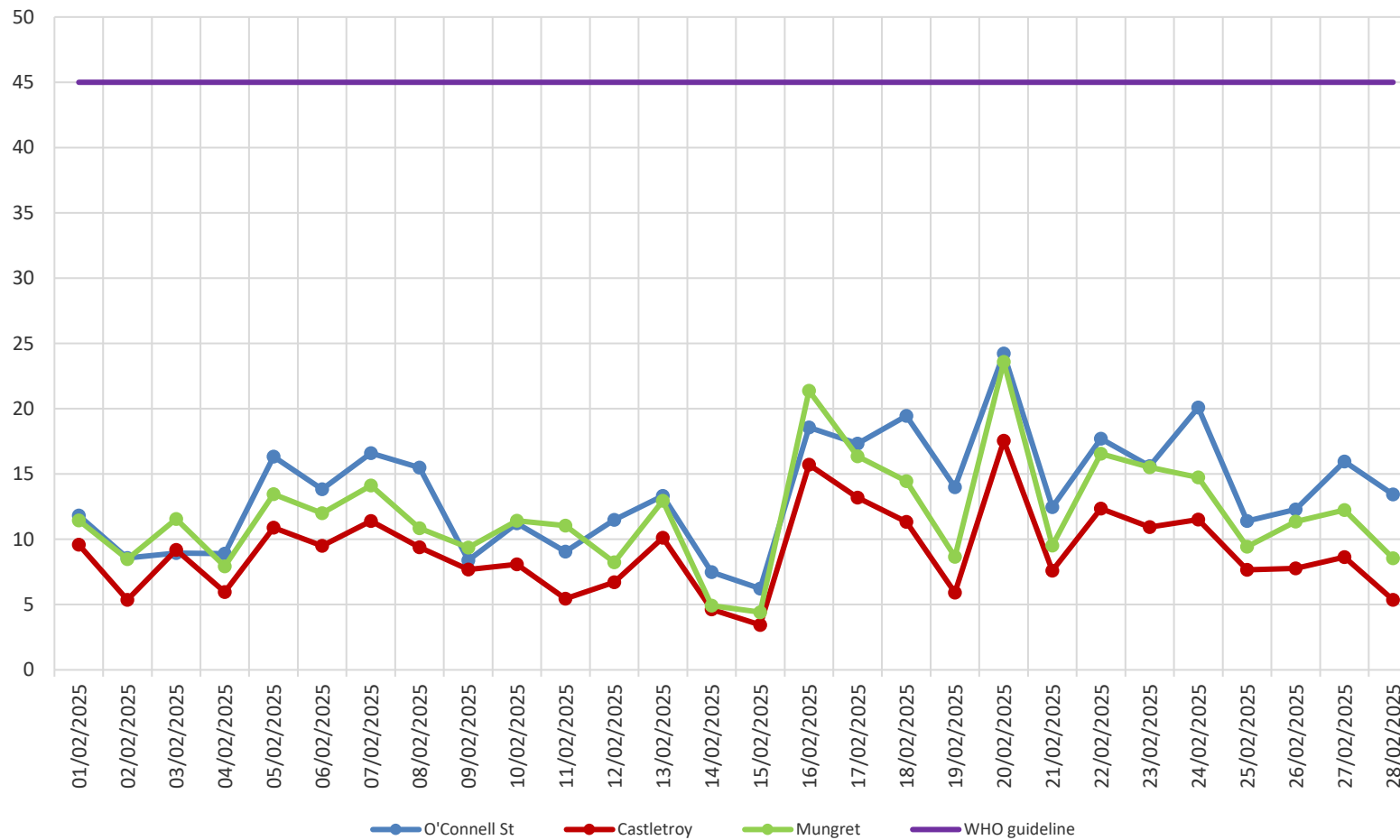
<sup>2</sup> Measurements of SO<sub>2</sub> are averaged over 15-minute periods by the gas monitors. An exceedance is inferred where the measured 15-minutes average value from the gas monitors is greater than the 10-minutes WHO guideline value for SO<sub>2</sub>.



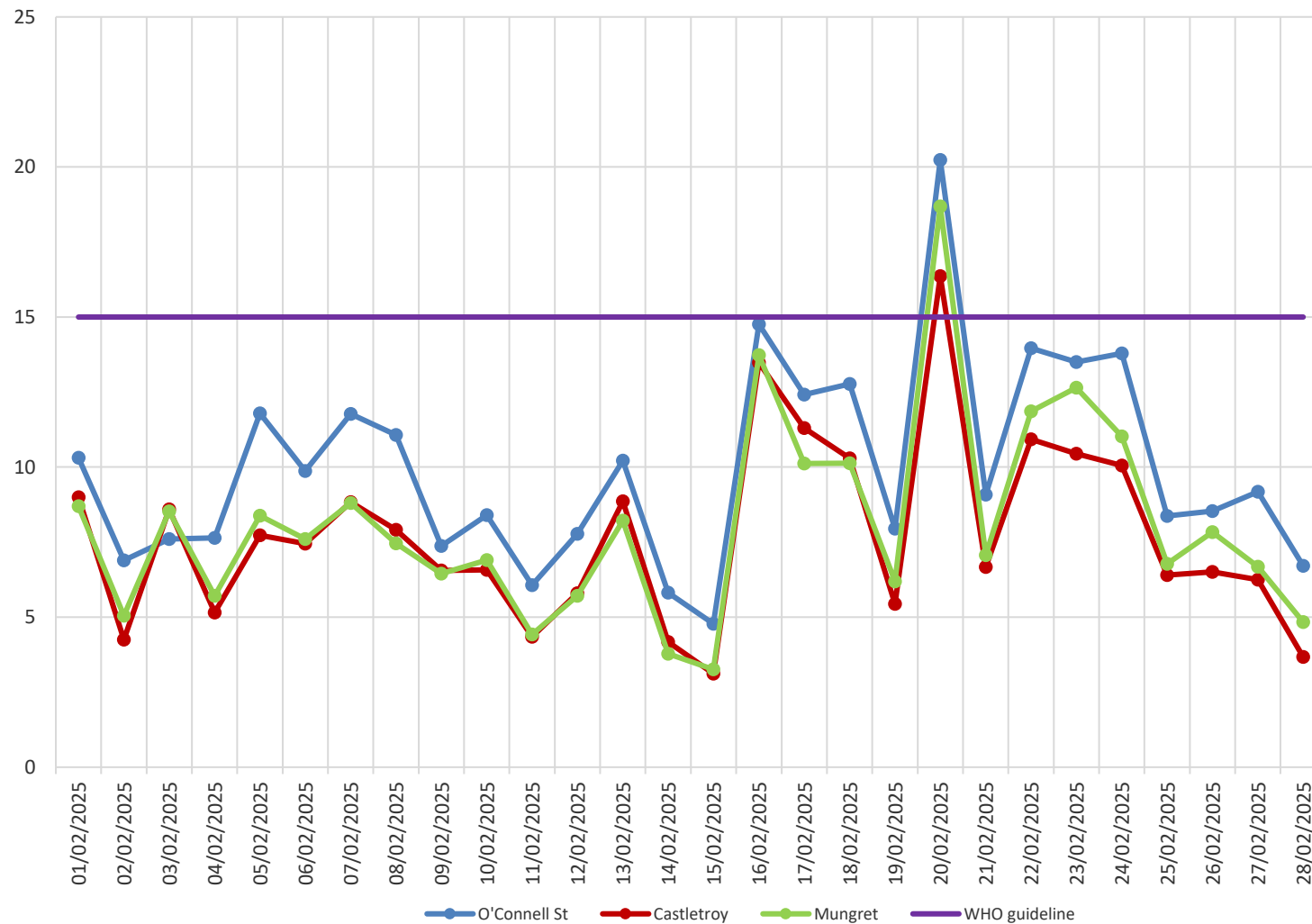
Total Particulates - 24 hour mean ( $\mu\text{g}/\text{m}^3$ )



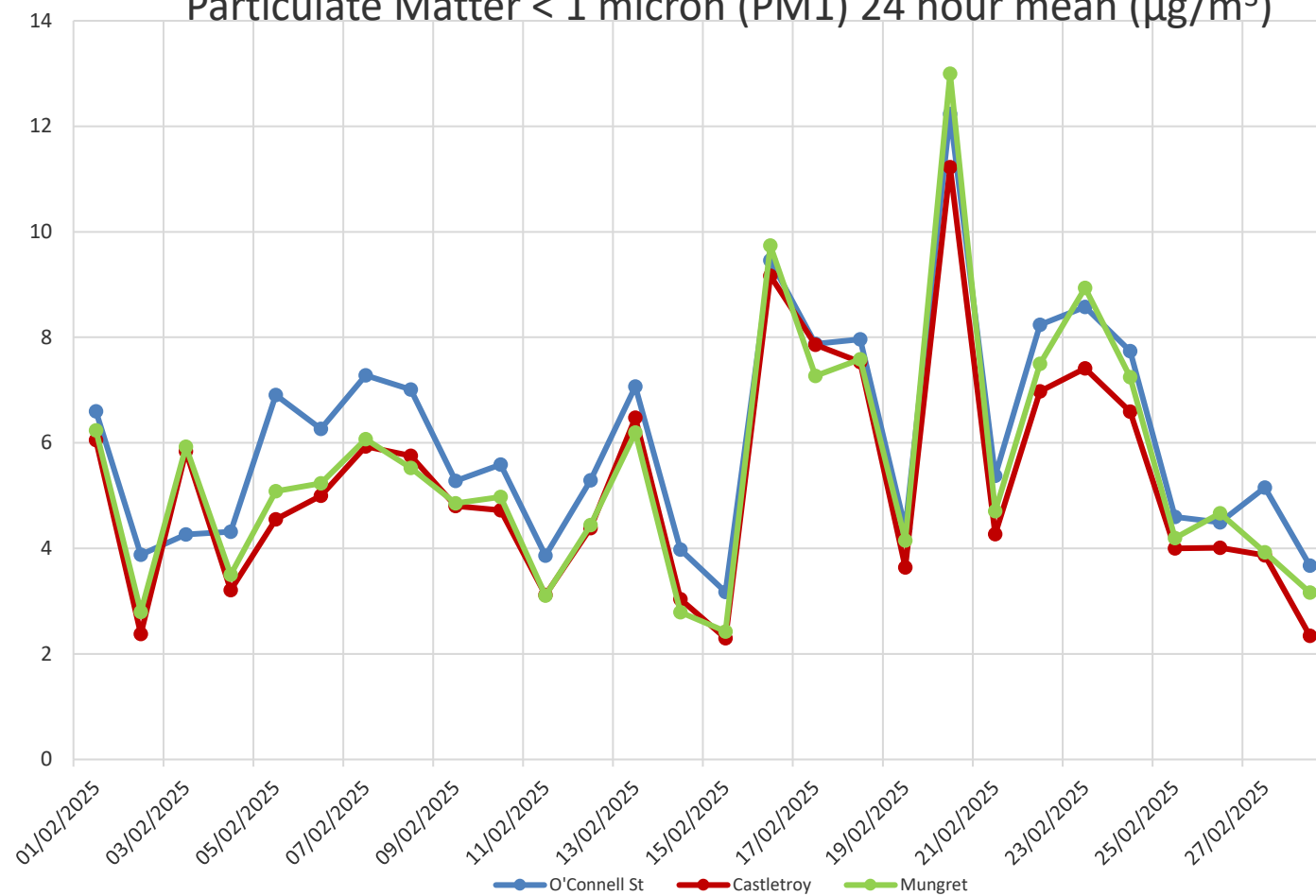
## Particulate Matter < 10 microns (PM10) 24 hour mean ( $\mu\text{g}/\text{m}^3$ )



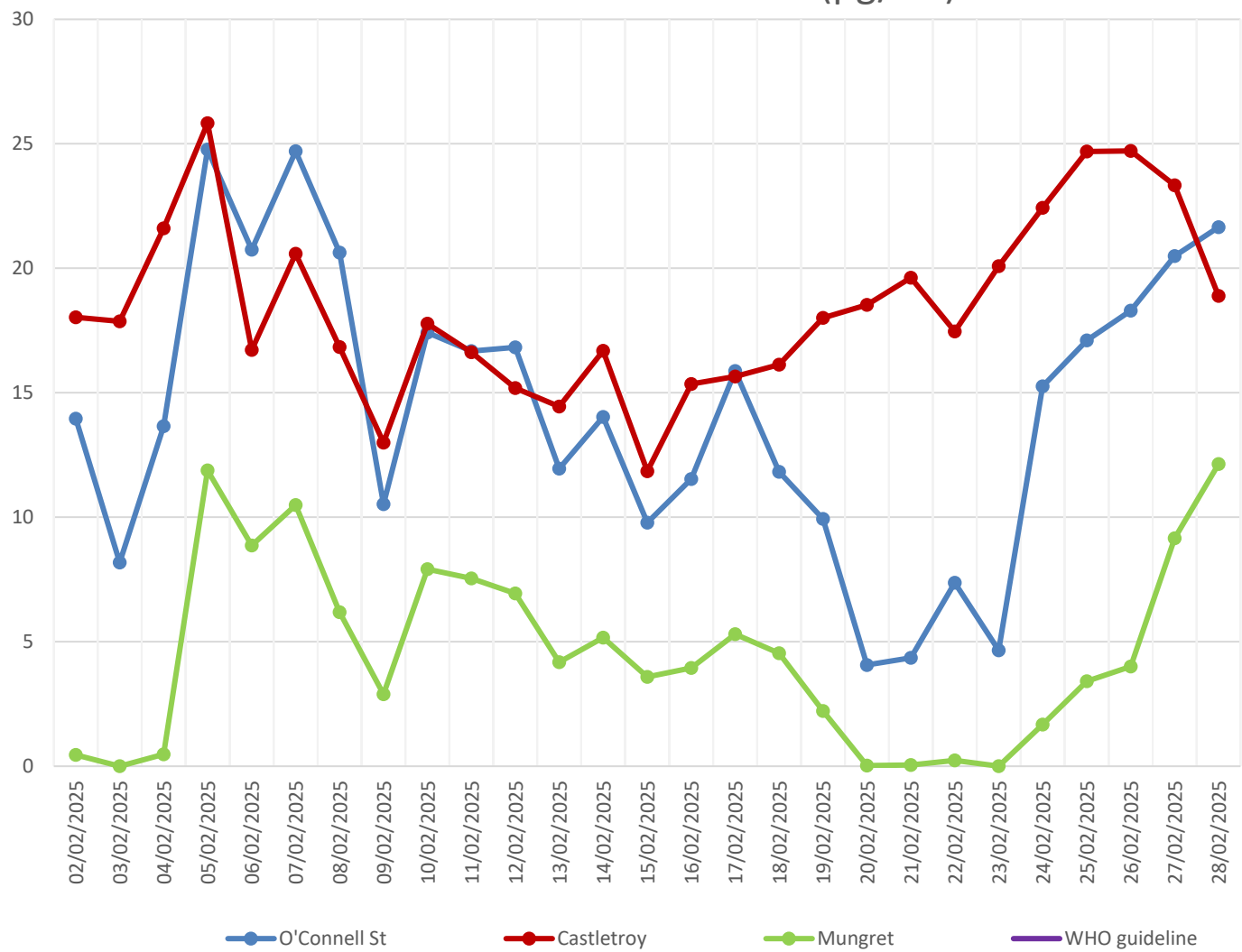
Particulate Matter < 2.5 micron (PM2.5) 24 hour mean ( $\mu\text{g}/\text{m}^3$ )



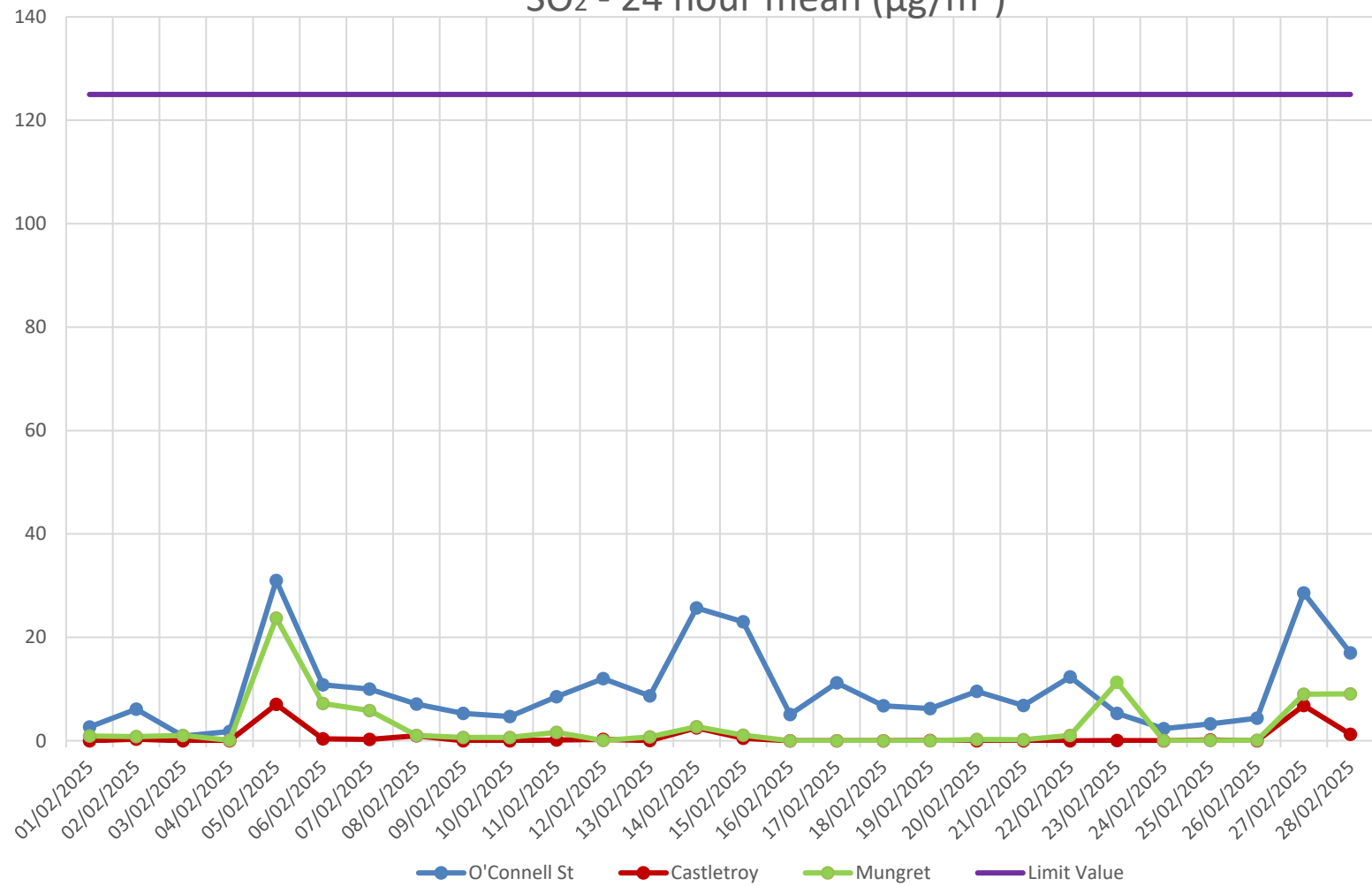
Particulate Matter < 1 micron (PM1) 24 hour mean ( $\mu\text{g}/\text{m}^3$ )



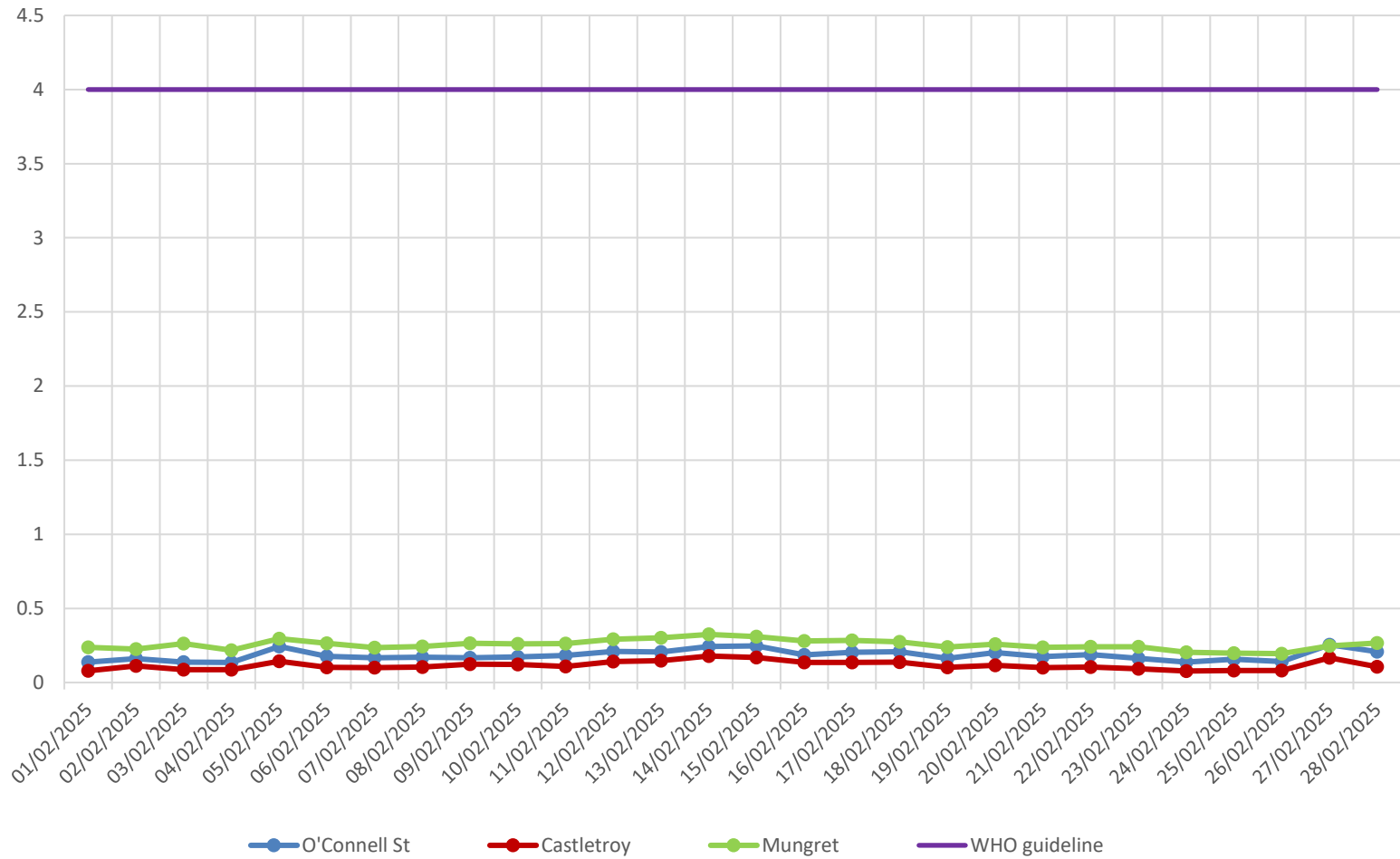
NO<sub>2</sub> - 24 hour mean (µg/m<sup>3</sup>)



SO<sub>2</sub> - 24 hour mean (µg/m<sup>3</sup>)



CO - 24 hour mean (mg/m<sup>3</sup>)



Ozone - 24 hour mean ( $\mu\text{g}/\text{m}^3$ )

