



EU Water Framework Directive & Ireland's River Basin Management Plan

“Water is not a commercial product like any other but, rather, a heritage which must be protected defended and treated as such.”... the opening line of the EU Water Framework Directive.

Guiding principle for LAWPRO



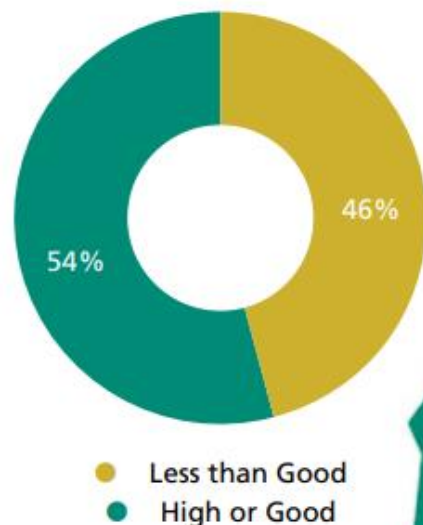
Who does what?

3 year monitoring cycle

EPA, Local authorities, Inland Fisheries Ireland, Marine Institute and others.

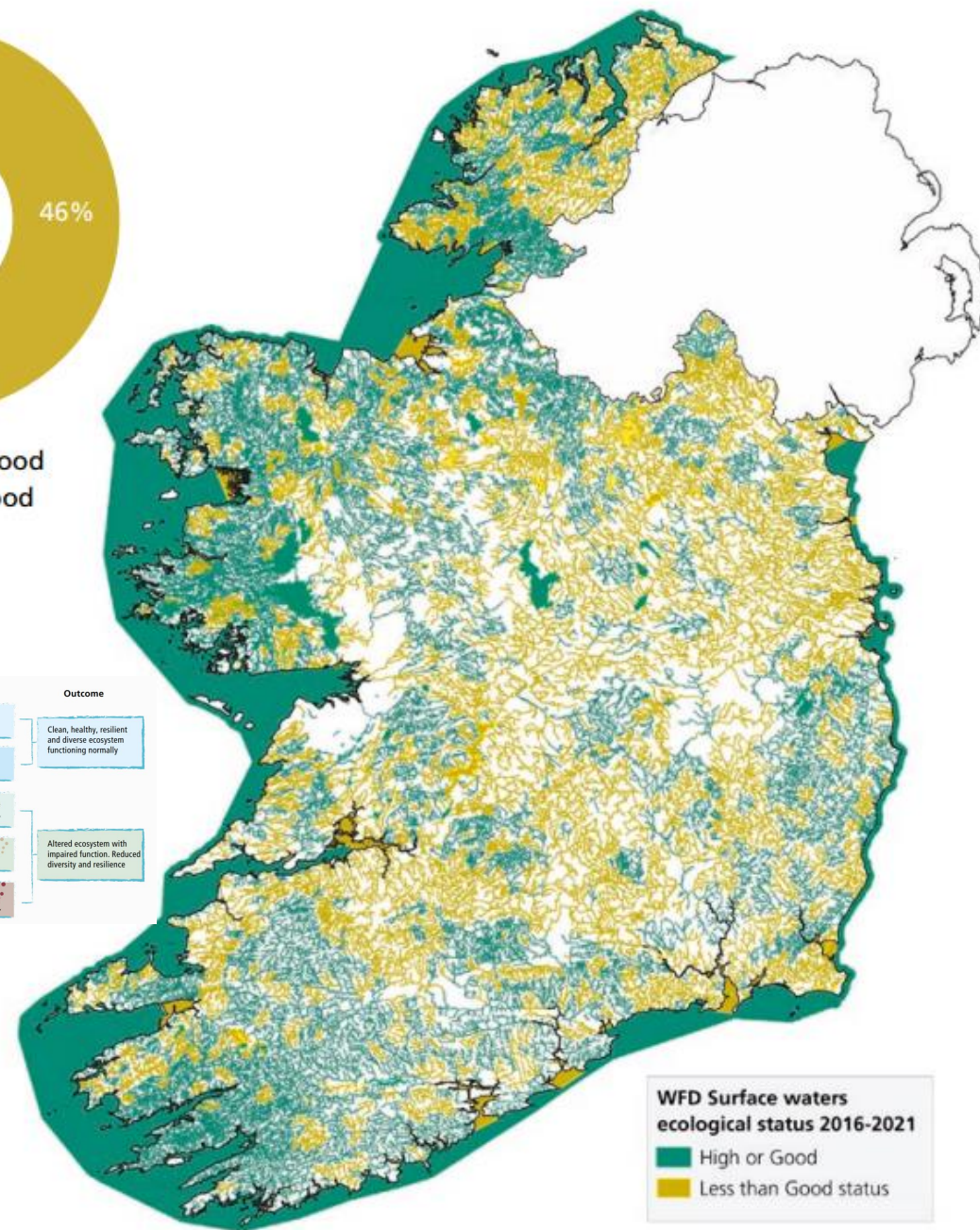
The EPA classifies and reports on the quality of surface waters (rivers, lakes, estuaries and coastal waters) and groundwaters every 3 years under the approach set out in the WFD.

Surface waters are classified as being in high, good, moderate, poor or bad ecological status. Groundwaters are classed as good or poor



Ecological Status	Impact	Outcome
HIGH	None or Minor	Clean, healthy, resilient and diverse ecosystem functioning normally
GOOD	Slight	
MODERATE	Moderate	
POOR	Major	Altered ecosystem with impaired function. Reduced diversity and resilience
BAD	Severe	

No Deterioration



Summary WFD status

- Rivers 56% GOOD 44% MODERATE POOR BAD**

Nitrogen levels increased from 2021 to 2022, with 40% of rivers showing unsatisfactory nitrate concentrations. Phosphate levels also need attention, with 28% of sites exhibiting unsatisfactory concentrations.

- Lakes 55% GOOD 45% MODERATE POOR BAD**

Phosphorous levels are particularly concerning. Concentrations are higher than the recommended thresholds in 36% of lakes.

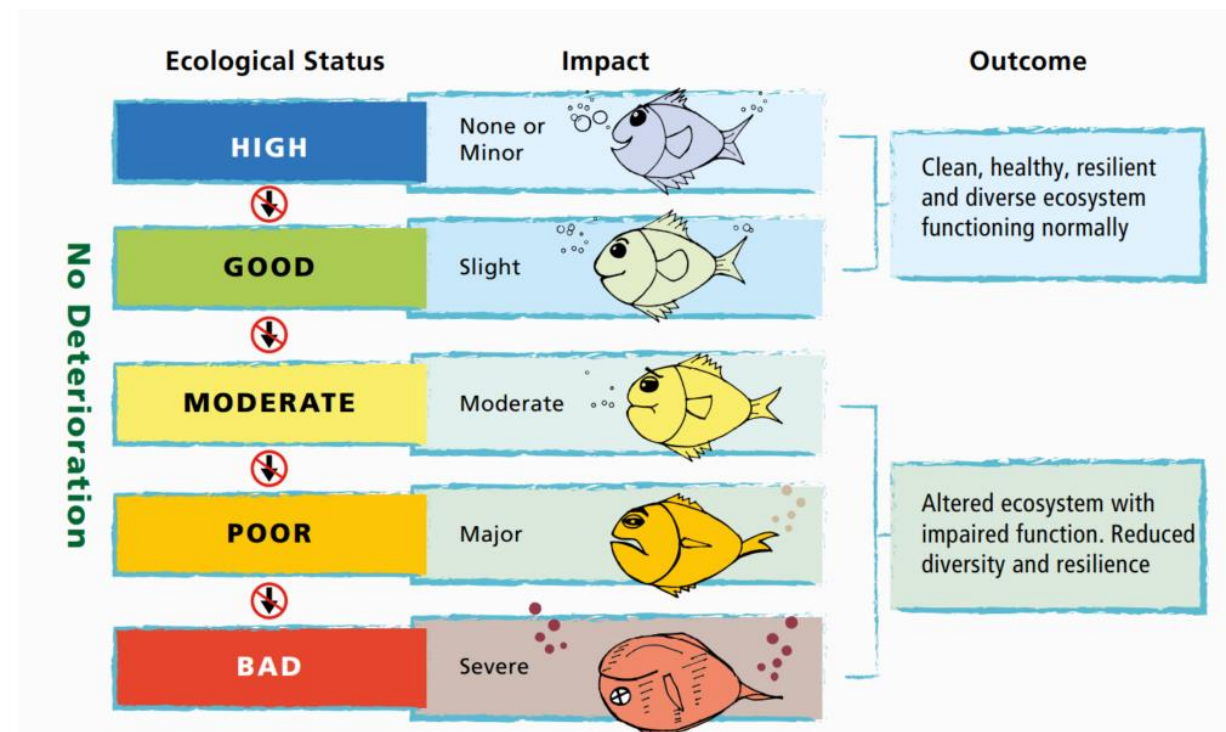
- Groundwater 91% SATISFACTORY**

However, nitrogen levels increased from 2021 to 2022. 20% of groundwater monitoring sites were considered to have 'high nitrate concentrations.'

- Transitional and Coastal Waters 97% SATISFACTORY**

However, nitrogen concentrations are too high in 20% of these water bodies. This is worrying because these waters are particularly vulnerable to nitrogen. Estuaries with nitrogen exceedances include:

- Glashaboy Estuary (Cork), Wexford Harbour, Castletown Estuary (Louth), Upper Barrow Estuary (Kilkenny), and Corock Estuary (Wexford).



What is LAWPRO?

Regional coordination
Catchment science

Community engagement & funding

But water already has enough protection?

— State

- Local Authority
- IFI
- EPA
- NPWS
- HSE
- DAFM
- Forest Service
- Uisce Éireann
- MARA
- SFPA
- OPW
- BIM
- NFGWS
- An Fórum Uisce
- LAWPRO
- GSI

— Public

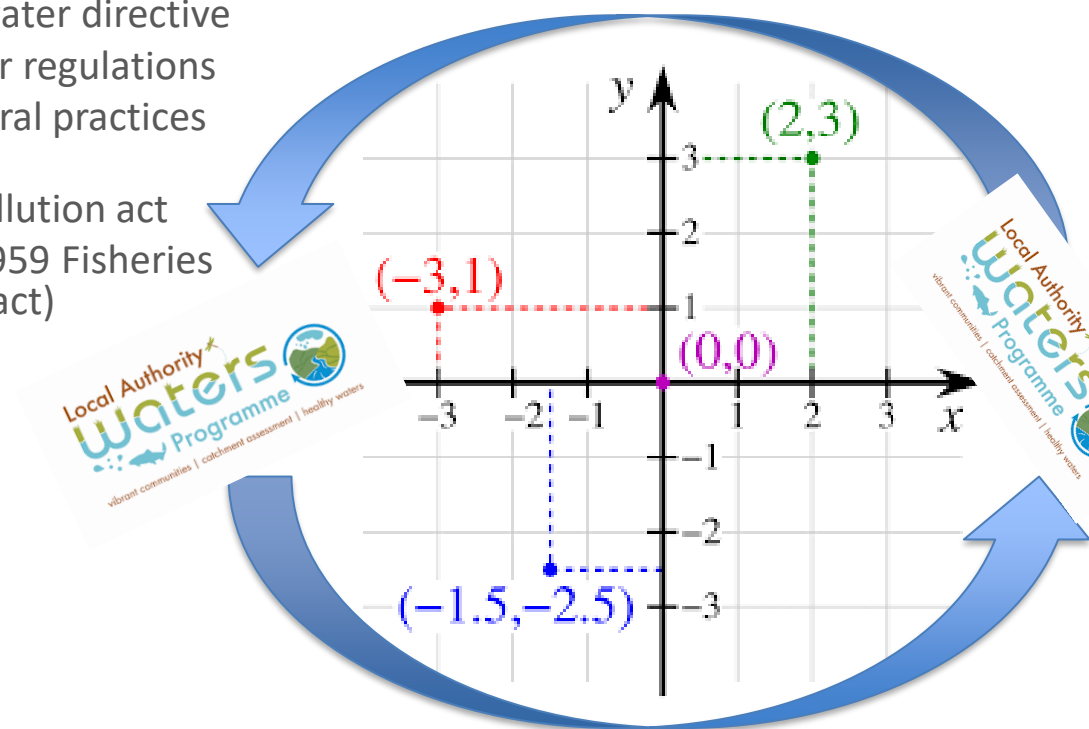
- Community groups
- Landowners/Farmers
- Anglers
- Kayakers
- Surfers
- Aquaculture
- Commercial fishermen
- Walkers
- Swimmers
- An Fórum Uisce
- SWAN/An Taisce
- LAWPRO CWO

— Legislation

- Water framework directive
- Shellfish directive
- Bathing water directive
- Drinking water directive
- Nitrates directive
- Urban waste water directive
- Salmonid water regulations
- Good agricultural practices regulation
- Local water pollution act
- IFI act 2010 (1959 Fisheries Consolidation act)

— Departmental

- Water Policy Advisory Committee
- National Technical Implementation Group
- Regional Coordination



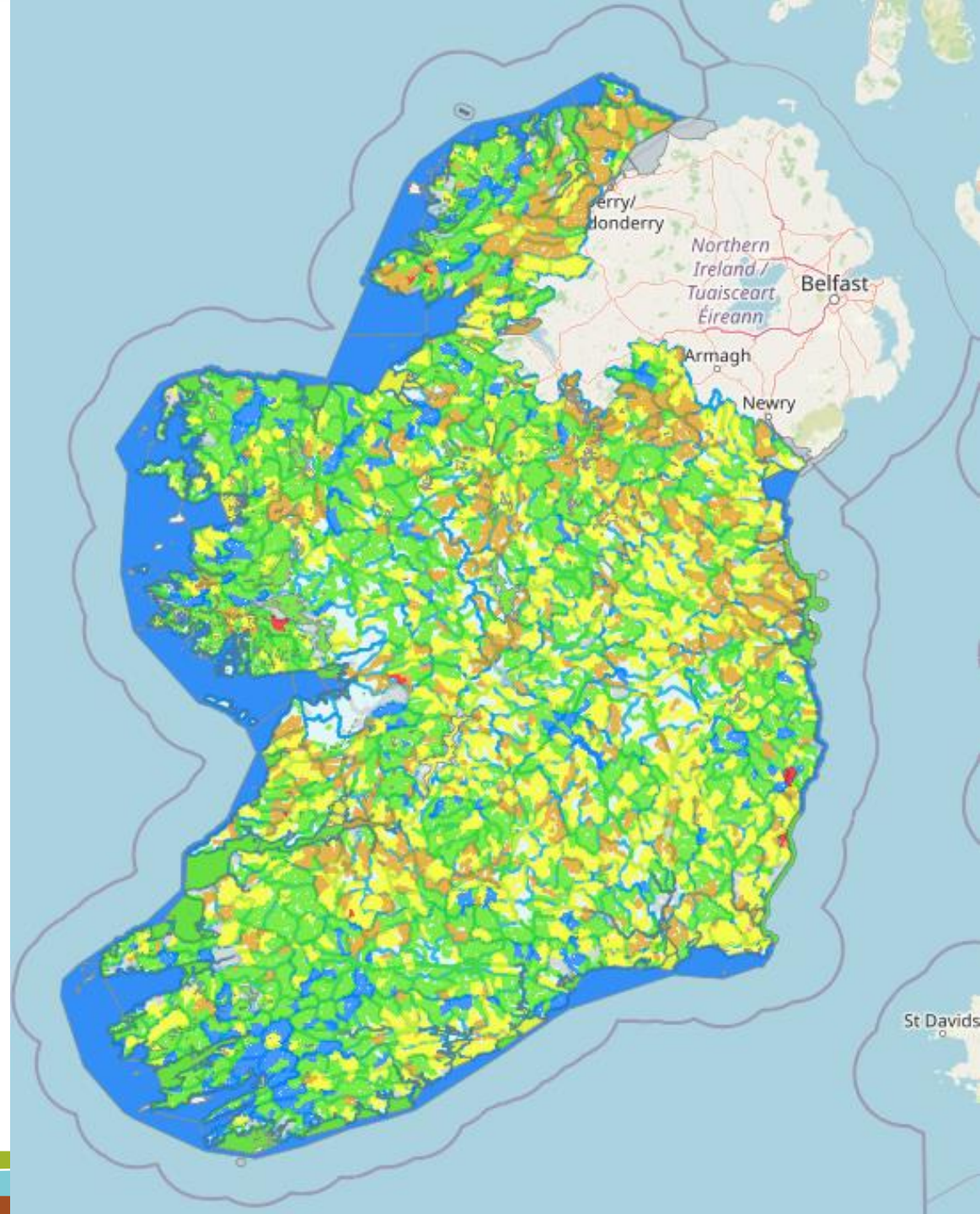


Community Water Officer

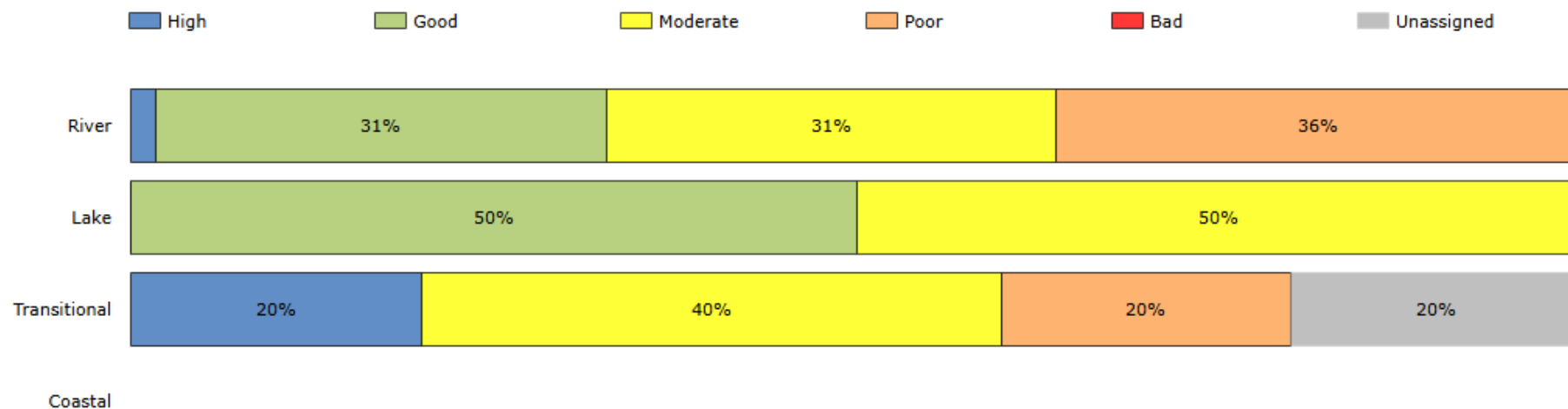
- Engage the public
- Consult (WAP and CCF)
- Assist community groups
- Seek collaboration amongst all stakeholders (ROCs) and new CCF



- 4842
waterbodies
 - River
 - Lake
 - Transitional
 - Coastal



WATERBODIES: ☒ All Waterbodies ☐ Monitored Waterbodies only



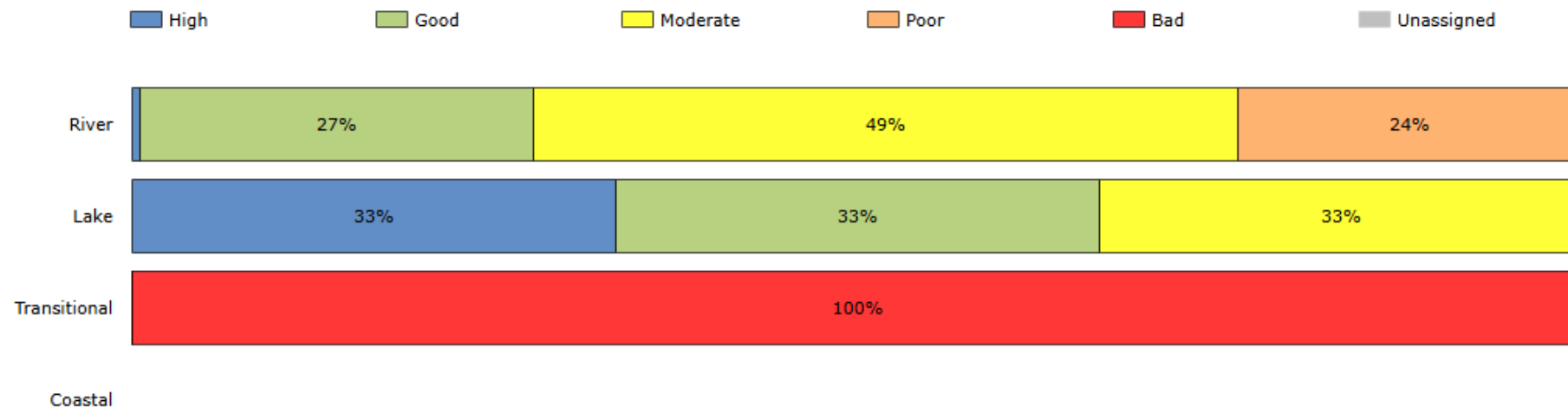
Limerick

33%

50%

20%

WATERBODIES: ☒ All Waterbodies ☐ Monitored Waterbodies only



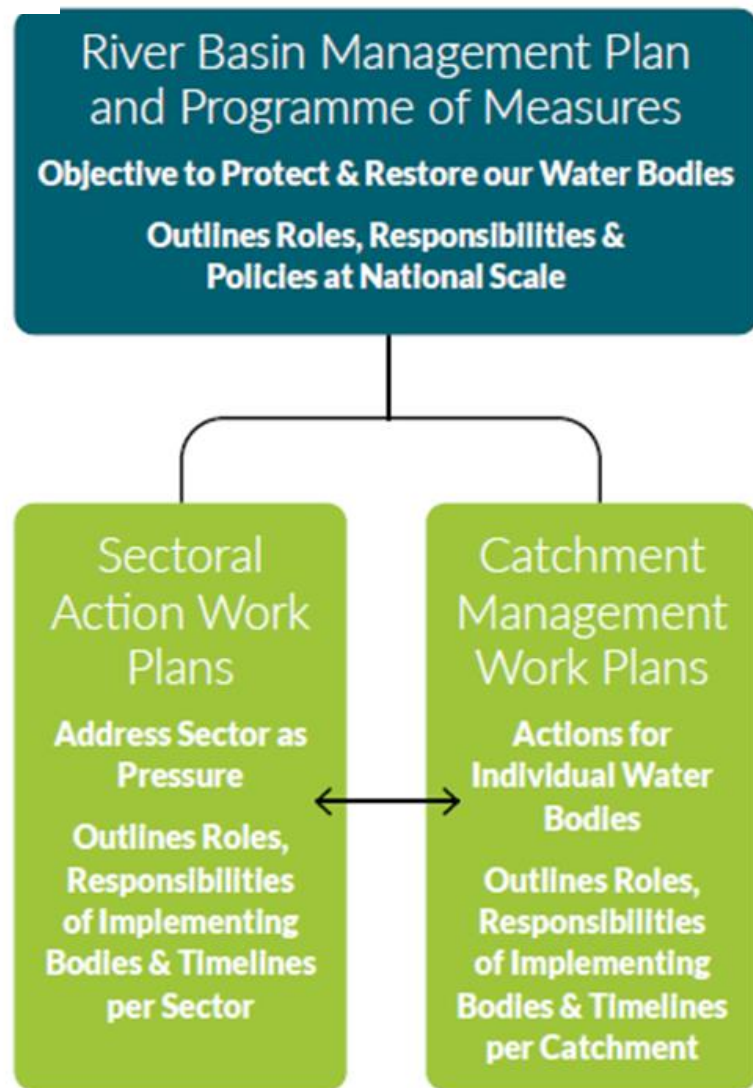
Tipperary

27%

66%

100%

Water Action Plan



Rialtas na hÉireann
Government of Ireland

Water Action Plan 2024

A River Basin Management Plan for Ireland

Appendix 1: Programme of Measures: Further information on the environmental measures to 2027

Prepared by the Department of Housing, Local Government and Heritage
www.gov.ie/RBMP

COMMUNITY WATER DEVELOPMENT
FUND (BLUE DOT FUND) €5K-€50K

HERITAGE WEEK €100-€2.5K
WORLD RIVER AND OCEAN DAY
BIODIVERSITY WEEK ETC
UN WORLD WATER DAY 22ND MARCH

CATCHMENT SUPPORT FUND
SETUP €500 - €5K
CORE COSTS €20K - €40K

LOCAL AWARENESS FUND €100-€5K

OTHERS
LEADER FUNDING
COMMUNITY FOUNDATION IRELAND
FLAGS
BIODIVERSITY OFFICER FUNDS
CLIMATE ACTION FUNDS



Sneem Riverbank Clean Up

Friday 22nd March

Meet at Sneem Bridge at 10am

Bring gloves if you have them and wear suitable
footwear/wellies



WHAT CAN YOU?

SEEK INFORMATION

USE **ONLINE TOOLS** TO EXPLORE YOUR CATCHMENT

VOICE YOUR CONCERNS AND **REPORT ISSUES**

SETUP A CATCHMENT ASSOCIATION

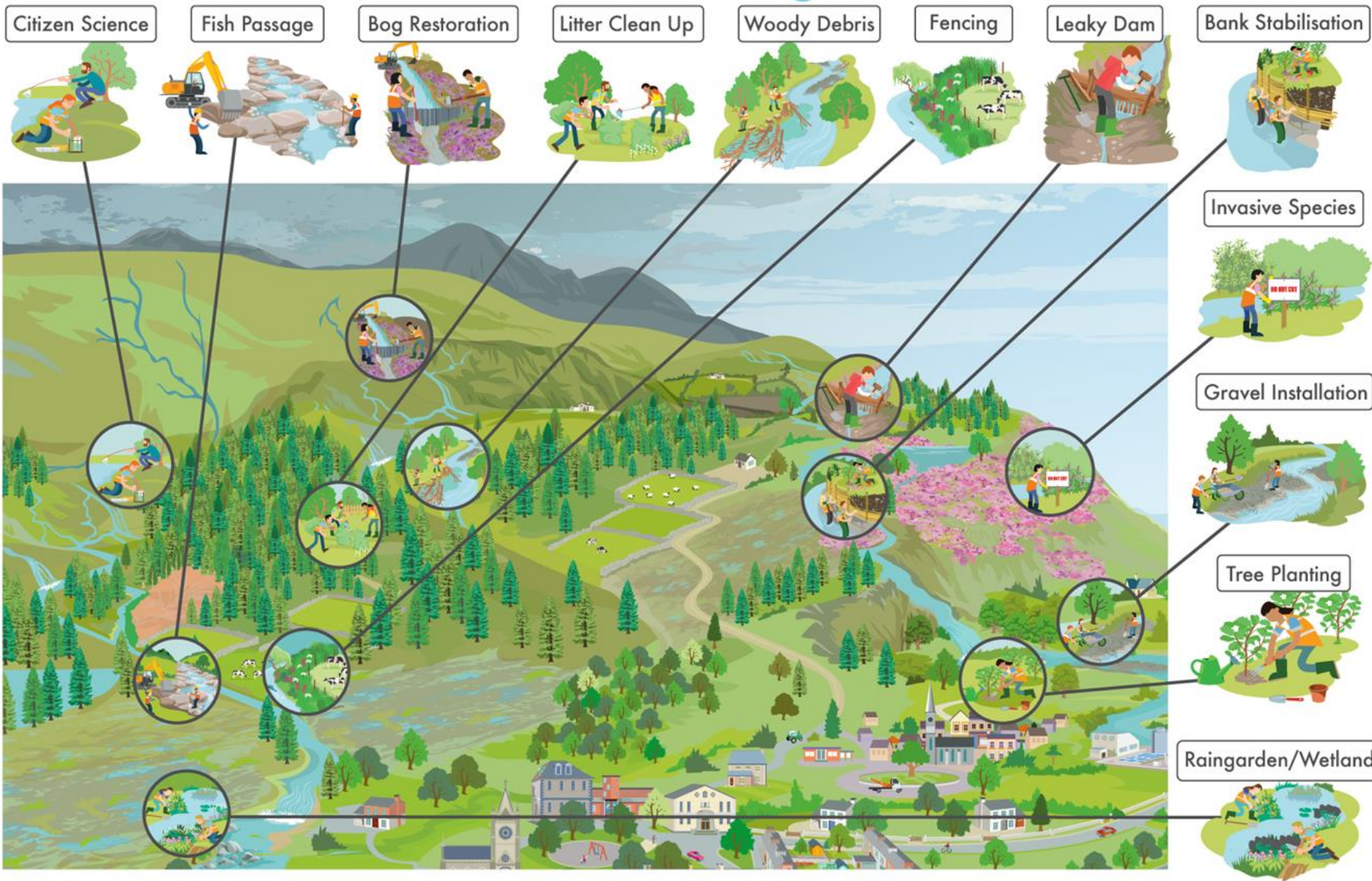
APPLY FOR FUNDING FOR **WATER QUALITY ACTIONS**

ENCOURAGE STAKE HOLDERS **TO LOOK FOR IMPROVEMENTS**

GET INVOLVED IN THE COMMUNITY CATCHMENT FORUMS

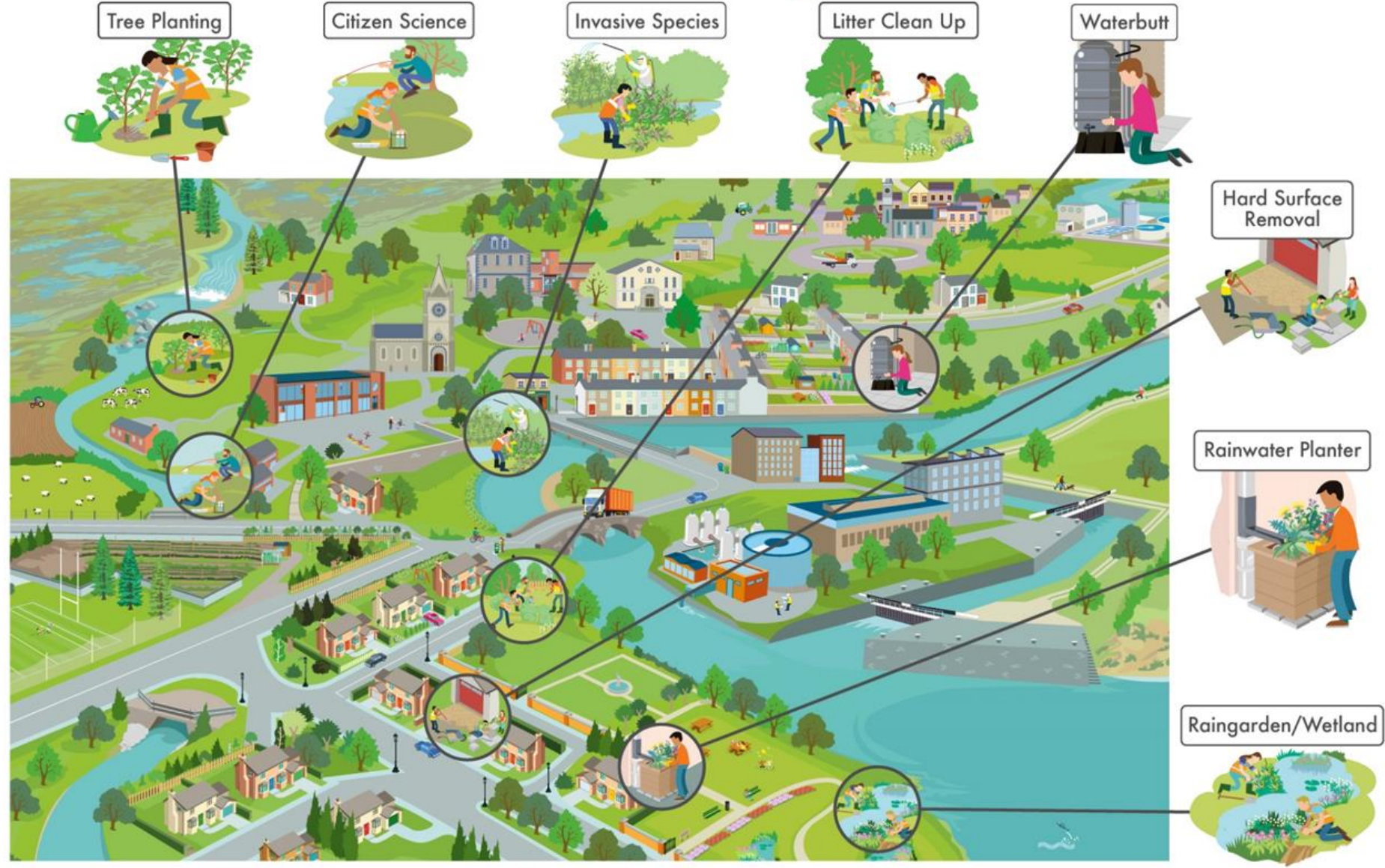
Communities Caring for Water

UPLAND Catchment



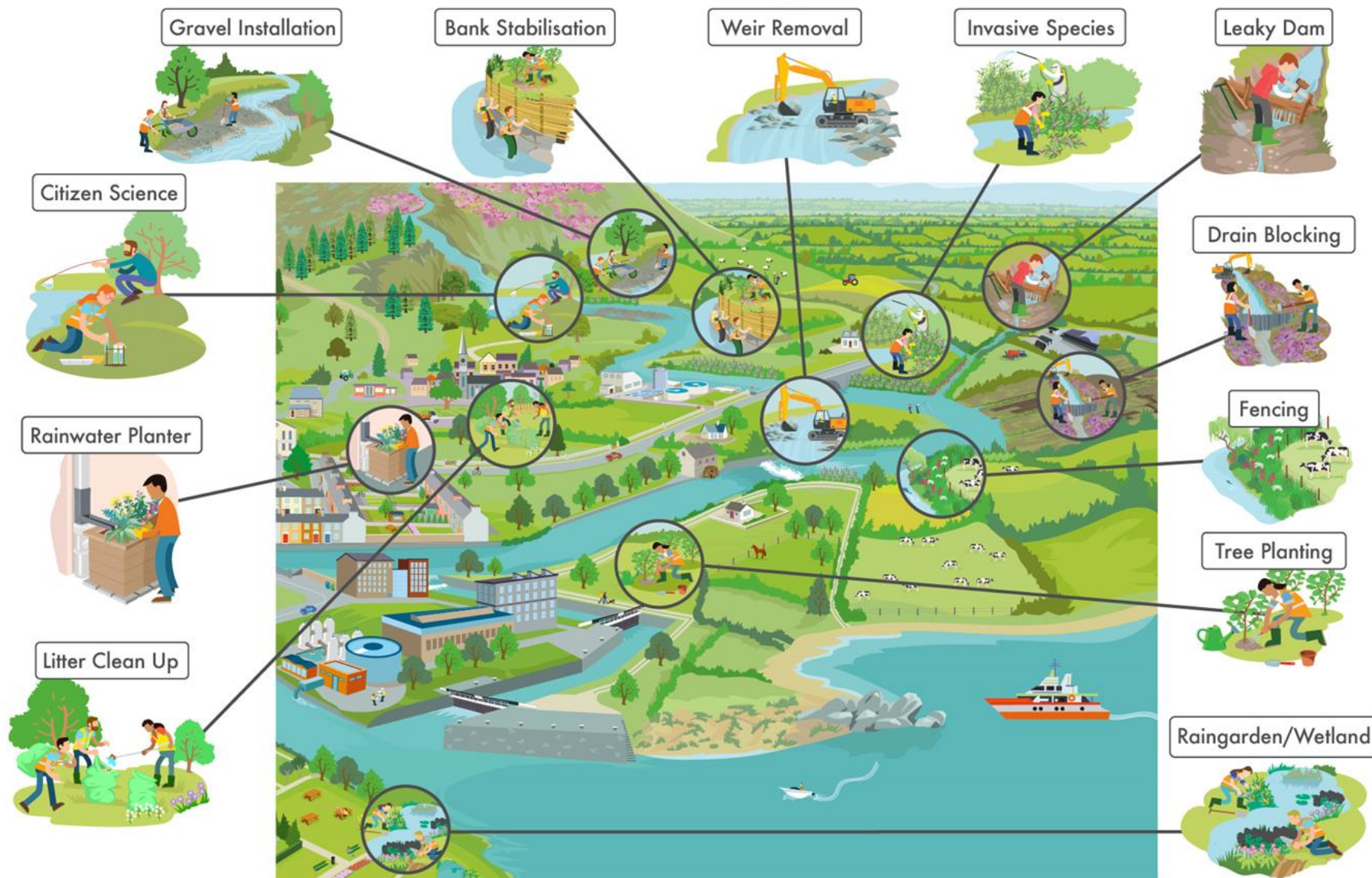
Communities Caring for Water

URBAN Catchment



Communities Caring for Water

**LOWLAND
Catchment**



Entente Florale 2024

Ballinahown Village has been chosen to represent Ireland in Entente Florale 2024. Entente Florale is an international competition established to recognise municipalities and villages in Europe for excellence in sustainable development of European towns, villages and cities that enhance the quality of life of citizens. To realise this aim Entente Florale encourages actions that foster a better living environment of both urban and rural dwellers. You can learn more about Entente Florale [here](#).

Participating in Entente Florale provides Ballinahown with a range of benefits, further development of our biodiversity and sustainability efforts along with fostering community engagement and pride. Much like Ballinahown, the competition emphasises sustainable practices, contributing to a healthier environment, and offers lots of educational opportunities for residents. We are excited about the promotion of tourism and potential international recognition that may come as a result of our participation. We look forward to the networking opportunities which will enable the exchange of ideas with other participating communities. We are grateful for the support of Westmeath County Council and our Entente Florale mentors as we prepare for this competition later in the summer.



USEFUL WEBSITES AND WHY

[GEOHIVE MAP VIEWER \(ARCGIS.COM\)](#) OLD MAP LAYERS

[EPA MAPS](#) CATCHMENTS.IE WATER QUALITY STATUS

[NATIONAL BARRIERS PROGRAMME APP | IFI OPEN DATA PORTAL \(ARCGIS.COM\)](#) IFI BARRIERS

[USEFUL DATA FOR IRISH RIVER CONSERVATION / WATER QUALITY – TRACKING FLOOD RELIEF PROJECTS, WATER ABSTRACTION & POLLUTION IN IRISH RIVERS \(IRISHRIVERPROJECT.COM\)](#) LOTS OF WATER DATA ENGO FIA'S

[REALTIME WATERLEVEL](#) LIKE IT SAYS WATER LEVEL DATA

[MAPS AND DATA | NATIONAL PARKS & WILDLIFE SERVICE \(NPWS.IE\)](#) NPWS DATA

[CITIZEN SCIENCE - LOCAL AUTHORITY WATER PROGRAMME \(LAWATERS.IE\)](#) CITIZEN SCIENCE MAP

[LEAP ONLINE | ENVIRONMENTAL PROTECTION AGENCY \(EPA.IE\)](#) LICENCE DISCHARGE DATA

[FORESTRY LICENCE VIEWER \(AGRICULTURE.GOV.IE\)](#) FOREST LICENCE VIEWER.

[GEOLOGICAL SURVEY IRELAND \(GSI.IE\)](#) GROUND WATER AND BEDROCK

[BEACHES.IE - FIND THE BEST LAKE AND SEA SWIMMING NEAR YOU](#) BATHING WATER QUALITY DATA

Citizen science

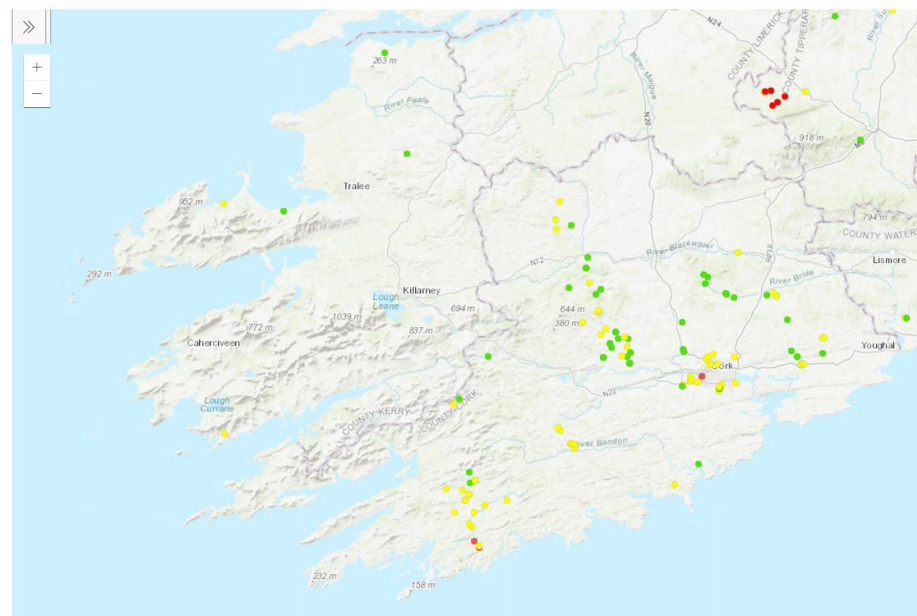
- Why?
- How?



Citizen Science Stream Index - Collected Data (2020 - 2024)

Please note this is citizen science data.
You can check out Water Framework Directive statutory monitoring data on [Catchments.ie](https://catchments.ie)
For your convenience, you can select water quality layers on this map.

Green = Good, Amber = Moderate, Red = Poor



- Would you like to be a citizen scientist?
- Unassigned and modelled rivers project Kerry?
- Kingdom vs the Rebels

School of Biological, Earth and Environmental Sciences

Citizen Science Stream Index (CSSI)

Recorder name:

Stream name:

Date:

GPS/location:

The Citizen Science Stream Index (CSSI) is based on the presence or absence of **six key aquatic invertebrates**. Three pollution-sensitive invertebrates ('good guys') are commonly found in clean streams and three pollution-tolerant invertebrates ('bad guys') are commonly found in polluted streams.

Citizens use a pond net to take three 30-second kick-samples (the three samples should be a few metres apart) from a shallow (<20cm), gravelly, fast-flowing part of the stream. The invertebrates captured in each sample are examined in a white tray on the bankside. The six key invertebrates are easily spotted amongst the many other species in the tray, by their characteristic shape, colour or movement.

The citizen will score each sample depending on which, if any, of the six key invertebrates occur in the tray. The three 'good guys' have a score of +1 each and the three 'bad guys' have a score of -1 each. The score for each kick-sample can range from +3 (all three good guys and no bad guys) to -3 (all three bad guys and no good guys). When the scores from **all three samples** are added together, the CSSI ranges from +9 to -9. Check out this your tube video on how to take a kick-sample. <https://youtu.be/HsDZ0siO6Ds>

Send your results to info@lawaters.ie and don't forget to **attach a clear photograph** of your sample and of **a copy/photograph of this filled in sampling sheet**.

	Sample 1	Sample 2	Sample 3
Stonefly (+1)	<input type="checkbox"/>	<input type="checkbox"/>	<input type="checkbox"/>
Flattened mayfly (+1)	<input type="checkbox"/>	<input type="checkbox"/>	<input type="checkbox"/>
Green caddisfly (+1)	<input type="checkbox"/>	<input type="checkbox"/>	<input type="checkbox"/>
Snail (-1)	<input type="checkbox"/>	<input type="checkbox"/>	<input type="checkbox"/>
Leech (-1)	<input type="checkbox"/>	<input type="checkbox"/>	<input type="checkbox"/>
Waterlouse (-1)	<input type="checkbox"/>	<input type="checkbox"/>	<input type="checkbox"/>
Sum of scores 1	<input type="text"/>	Sum of scores 2	<input type="text"/>
Sum of scores 1	<input type="text"/>	Sum of scores 2	<input type="text"/>
Sum of scores 1	<input type="text"/>	Sum of scores 2	<input type="text"/>
			Total score for the 3 samples = CSSI Score

Take a clear photograph of your sample to let us check and verify your sample

Take a good, clear photo of all of the six key invertebrates that were found in the 3 samples, placed in a small white-bottom dish (eg jam jar lid) including a label, with information on the date, stream name, location and recorder.

CSSI Scores can be a 'traffic light' for water quality

CSSI score -9 to -5
Heavily polluted

CSSI Score -4 to +4
Moderately polluted

CSSI Score +5 to +9
Clean

Any observations (eg. excessive algae or fine sediment, cattle access nearby, surface foam, presence of trout/salmon etc):

Send your results to info@lawaters.ie and don't forget to **attach a clear photograph** of your sample and of **your filled in sampling sheet**.

WHAT DOES WATER MEAN TO YOU?





Water. It's an essential building block of life, constantly moving in a hydrologic cycle that flows in a continuous loop above, across and even below the Earth's surface. But water is also constantly moving through another cycle -- the human water cycle -- that powers our homes, hydrates our bodies, irrigates our crops and processes our waste. The tight connection between water, food and energy makes them dependent on one another





IF YOU HAVE A WATER QUALITY IDEA

PLEASE GET IN TOUCH

CWALSH@LAWATERS.IE

0858709575