

1

**LIMERICK – LUMINEACH 52 entries in 2024**

Centre - Lárionad	Mark - Marc	Award - Duais
<b>Category A</b>		
Ardsinna - An t-Éirí	371	Bronze Medal
Templegreen - Timpallán an Ghreimín	349	
Kilmealy - Cill Míle	338	
Tullaulla - Tula na Fala	335	
Kiltealy - Cill Tíle	318	
Shanahane - Sléane Shannán	308	
Glenahoe - Gleann Gha	304	
Fennagh - Fionnagh	300	
Shanah - An Gleann Rua	295	
Kilcoman - Cill Chumáin	285	
Garranish - Garra na Dóire	284	
Ballynah - Bala Áine Éile Tuile	275	
Elton - Éilín	264	
<b>Category B</b>		
Satally - An t-Árda	375	County Second & Silver Medal
Breifne - Áth Lúthra	359	
Gla - An Gleann	355	
Buall - Bu na Clóise	347	
Afhra - Áin an tSáine	345	
Doon - Dún Donn	333	
Kilfane - Cill Fhionn	331	
Angelsboro - Gleann na gCúishe	330	
Mountrath - Cúis Uí Chléire	328	
Knockling - Cúis Lúige	324	
Pennacross - Tula Phéaróg	321	
Ballyvan - Bala Shábhna	299	
Cappanoe - An t-Árda	294	
Rockhill - Bruise-Village		
- Cúis na Carraige - Bru	277	
Woodlane - Fala na Cúile	273	
Dromochlaigh - Dromochla	273	
Southcote - Cúis na Cúile	271	
Mountrath - Cúis na Cúile	269	
Ballyvan - Bala Shábhna	265	
Oila - Oila	261	
Glenagh - Gleann	252	
Pennacross - Tula Phéaróg	246	

**Overall Winner in 1994**

**2024 Ballincollig, Co. Cork - Overall winner with 386 marks**

4/4/2025

**LIMERICK – LUMINEACH**

Centre - Lárionad	Mark - Marc	Award - Duais
<b>Category C</b>		
Adare - Áin Dara	381	County First & Gold Medal
Kilmealy - Cill Míle	366	
Ardsinna - An t-Éirí	349	
Coom - Cúimh	346	
Munroe - Maigh Rua	333	
Ballynery - Bala an tSáine	331	
Hospital - An t-Árda	332	
Rathalea - Ráth Cúile	311	
Annacorty - Ánna Cúile	304	
Caherlahan - Cathair Shábhna	296	
Caherlahan - Cathair Shábhna	284	
Moyross - Maigh Rua	278	
Southill - Cúis Sháine	272	
<b>Category D</b>		
Caherlahan - Cathair Shábhna	372	County Third & Silver Medal
<b>Category E</b>		
Newcastle West - Cúis na Cúile	358	Bronze Medal
<b>Category H</b>		
Limerick City - Cathair Lúmhgh	358	Silver Medal

**Overall Winner in 1976****Kildare – 30 entries****No Overall Winner yet**

12 medals  
8 gold, 3 silver, 1 bronze

**Cork South – 38 entries**

11 Medals  
6 gold, 2 silver, 3 bronze

2

2



- Community - Planning and Involvement** 80 marks
- Streetscape and Public Places** 80 Marks
- Green Spaces and Landscaping** 80 marks
- Nature and Biodiversity in your Locality** 55 Marks
- Sustainability – Doing more with less** 55 marks
- Tidiness and Litter Control** 90 Marks
- Residential Streets & Housing Areas** 55 marks
- Approach Roads, Streets & Lanes** 55 Marks

**Total Possible Marks = 550**

4/4/2025

3

3

**THE SUPERVALU TIDYTOWNS HANDBOOK**

The SuperValu Tidy Towns competition commenced in 1958 and has since become Ireland's best-known sustainable and environmental initiative. The competition is administered by the Department of Rural and Community Development and has been proudly sponsored by SuperValu since 1991.

The Handbook, which has been prepared with input from the national panel of Tidy Towns Adjudicators replaces the previous version issued in 2010.

The new version is divided into sections, each category is covered individually, however, groups are advised not to read each section in isolation from the others. Landscaping has an important role to play in the adjudication of categories including: Streetscapes and Public Places, Residential Streets and Housing Areas and Approach Roads, Streets and Lanes. Tidiness and Litter control, likewise will be looked at in a number of categories. We would therefore, encourage you to refer to all categories regardless of the project or initiative being



4/4/2025

4

4

### ADJUDICATION PROCESS

- There are about 30 judges in the Tidy Town panel.
  - They include **Architects, Planners, Landscape Architects, Horticulturists, Ecologists, Sustainability** experts and Tourism specialists as well as former **Community** Activists from Tidy Towns
  - Usually **one judge does a county**, although in some cases, a county may be shared with two judges.
  - Every entry receives **one visit by a judge** and depending on the population size, the time spent judging will vary from one hour to five or more hours.
  - Entries in the top league receive a **second adjudication by a different judge**.
- **It is suggested that reports for at least five years be studied to obtain the views of different professions.**

Dr Christy Boylan 2024

5

5

### ADJUDICATION PROCESS

- **Eircode**
- **Public toilet facility**
- It is best to reduce the time spent reading the application to allow the judge more time for the site visit.
- **Reduce the size of the application by**
  - **Minimum amount of information in a clear and concise way**
  - **Include pictures throughout the text where relevant**
  - **Short sentences, bold and bullet points**
  - **Print not to exceed 40/50 pages or even less.**

Dr Christy Boylan 2024

6

6

### Community - Planning and Involvement

#### Community - Your Planning and Involvement

60 Marks

Marks are awarded for the overall quality of the Entry Form, town/village map and appropriateness of backup material submitted with your entry. Other key issues are the participation of the local community, businesses, schools and youth in general, working partnerships with local civic agencies, works carried out and appropriate projects completed; existence of an achievable updated Tidy Towns Plan. Consideration will be given to social inclusion, residents in activities.

Number involved in

Number not on com

Please indicate level of meetings, general in

Please list all of the through sponsorship

How do you communicate via email, social media

How do you engage your work, do you

Identify any specific can include ongoing

- **This section of the application form takes up just over a page.**
- **When some applicants complete this section they expand it to perhaps 30 pages.**
- **That is too many pages and too much information for the adjudicator**
- **Less than ten pages should be the target**
- **Brief responses highlighted are easier and quicker for the adjudicator to read**
- **Avoid long sentences and long paragraphs**

Briefly identify **ONE** specific project where particular effort was applied since June 1st, 2023. (This can include ongoing maintenance work or new project)

Pay particular attention to this question and suggest only **ONE project** that in your view deserves special attention from the adjudicator – or - did not receive sufficient attention by the adjudicator last year or previous years.

Do not submit more than one project

4/4/2025

8

8

7

### ADJUDICATION PROCESS

- **Judges are human** and can make mistakes. They can also be influenced by the standard of the applications and accompanying maps.
- Judges will (most likely) pay more attention to matters within their own discipline although they will cover all eight criteria.
- Judges do not revisit a community **within a five year period**.

• **It is suggested that reports for at least five years be studied to obtain the views of different professions.**

Dr Christy Boylan 2024

9

9

### Completing the Application Form

- **There is no need for A4 size pictures.** On the other hand, small pictures of groups of people are of little value
- **Restrict the use of pictures to your project activities** or to highlight something that the judges cannot see during the visit – examples include festivals and spring floral displays.
- **Print not to exceed 40/50 pages or even less.**
- The DRCD is moving towards a complete digital application. The transition has been done by accepting only email applications.
- **The final phase will be the uploading of the application to a site that will have restricted space for text.**

Dr Christy Boylan 2024

10

10

### Submitting the Application Form

- **There is a limit of 20 mb.** on what they can receive and that could be the size of a photograph. Therefore the completed forms should be compressed to a size less than 20 mb.
  - For security reasons, the **DRCD is not allowed** to use a share drive such as Google or Dropbox.
  - **Large emails block their system and prevent other emails getting through.**
- **From 2020, DRCD no longer acknowledge receipt of applications. Instead, they register them as they are received and this register is available on their website.**
- **Therefore, it is the responsibility of each Tidy Town Committee to check the website and see if their application was received (registered)**

Dr Christy Boylan 2024

11

11

How do you communicate with your community (newsletter, newspapers, public meetings, email, social media, website, etc.)?

**We value the support of our community and use the following means of communication with them:**

- **Text Alert, Email and Facebook**
- **Notices read at Mass and Church, in Parish Newsletters and in other Parishes**
- **Local Media Print and Voice**
- **Public Meetings**
- **Flyers – which we keep to a minimum to reduce the use of paper**

**Brief responses highlighted are easier and quicker for the adjudicator to read**  
**Avoid long sentences and long paragraphs**

4/4/2025

12

12

How do you engage with your local schools, youth clubs, etc.?  
How do you involve youth in your work, do you have a Junior TidyTowns, is there youth representation on your committee.

#### EXAMPLES OF RESPONSES

- One committee member is a member of the Board of Management who liaises with the School Green Schools Committee, and they have just earned their fifth flag in the Biodiversity category.
- Currently we also have two members from one of the parish Secondary schools volunteering with us whilst working towards their Gaisce award.

**Brief responses highlighted are easier and quicker for the adjudicator to read**  
**Avoid long sentences and long paragraphs**

4/4/2025

13

13

### Community - Planning and Involvement

3 – 5 year plan

Shared vision of what can be achieved

#### Key Principles

- Short** – no longer than 5 pages
- Direct** – Outline how, why and when you are going to undertake jobs
- Realistic** – Projects should be capable of being implemented and refer to the timescale
- Yours** – The plan is the group's work programme and should reflect their objectives and capabilities

- Simple and easily read document
- A4 size map or A3 folded to A4 is best
- Mark the tasks locations on the map

4/4/2025

15

15

### Sustainable Development Goals



The Sustainable Development Goals (SDGs) cover the three dimensions of sustainable development; economic growth, social inclusion and the protection of the environment. There are 17 SDGs, with each goal having a number of sub-targets whereby TidyTowns committees can align their projects or initiatives to one or more specific goals.

Symbols for the relevant goals for each criterion are shown at the top of each page - intended to be a guideline for suitable projects.

4/4/2025

14

14

Multi Annual Plan - Example					
Project Name	Description	Partner Agency	2024	2025	2026
Greenway	Develop a greenway along disused railway track	Iarnrod Éireann and Local authority	✓	✓	✓
Wildflower Meadow	Develop a wildflower meadow on open space at Ard na Greine estate	Residents of Ard na Greine estate	✓	✓	✓
Seating in local park	Provide an additional 3 seats in the local park	Local authority and possible sponsors	✓		
Vacant house in Main Street	Paint windows onto boards on openings and paint the front facade	To obtain support from the owner and possible sponsorship		✓	
Hedge planting	Identify locations for additional hedge planting	Private property owners and local authority		✓	✓

4/4/2025

16

16

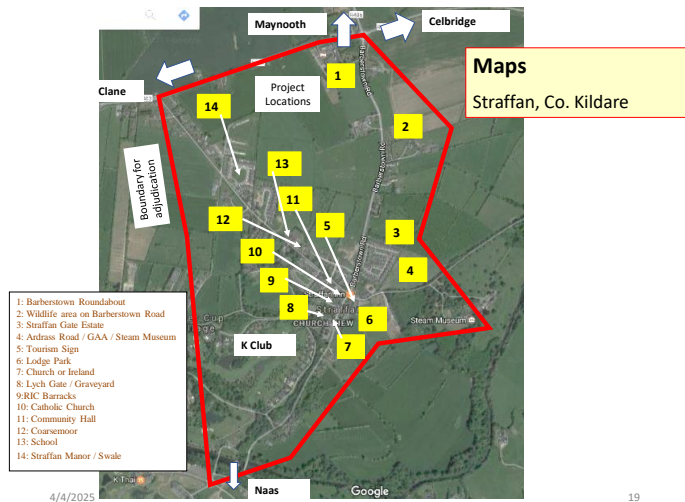
## Maps

- It is essential to include a map showing the extent of the town or village that is entered in the competition.
- For small centres, it should be possible to include the entire area but this can be difficult for large towns and cities.
- While a hand drawn sketch will suffice in many cases, it is relatively easy to acquire a satellite view or Google map that may be accurate and to scale – although it may not have changes of recent years.
- Superimpose on the map/drawing, a North point and the roads leading to neighbouring towns/villages.
- Label the major landmarks such as a church or school.
- If the community manages an area outside the town or village boundary, then mention it and provide directions for the adjudicator.

4/4/2025

17

17



4/4/2025

19

19

## Maps

- Label the projects for the adjudicator to visit and show the **legend on the same page.**
- Place numbers on the map in a sequence that facilitates ease of finding them.
- The identification system should be easy to understand and be easily referenced to the information in the application.
- **Use of a colour, symbol and numbering system works best for a large community with many places to visit.**
- For example, use SP1, SP2 etc. for Streetscape and Public Places. Alternatively use **circles, triangles, squares, stars etc.**, or other symbols to identify the criterion.
- **The use of different colours for different criteria may also help.**
- A combination of all three systems may also be used.

4/4/2025

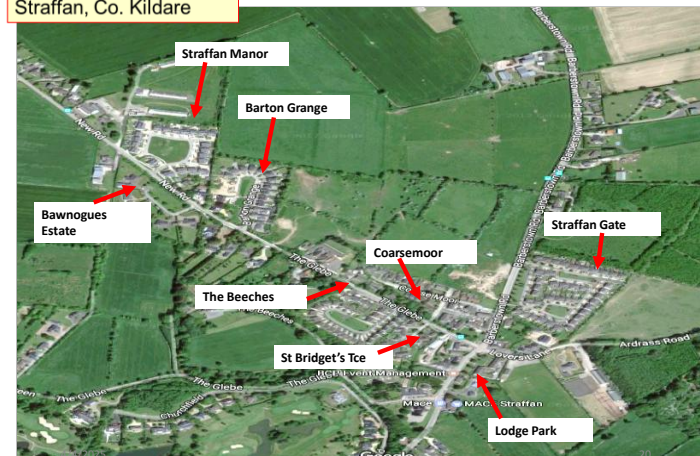
18

18

## Maps

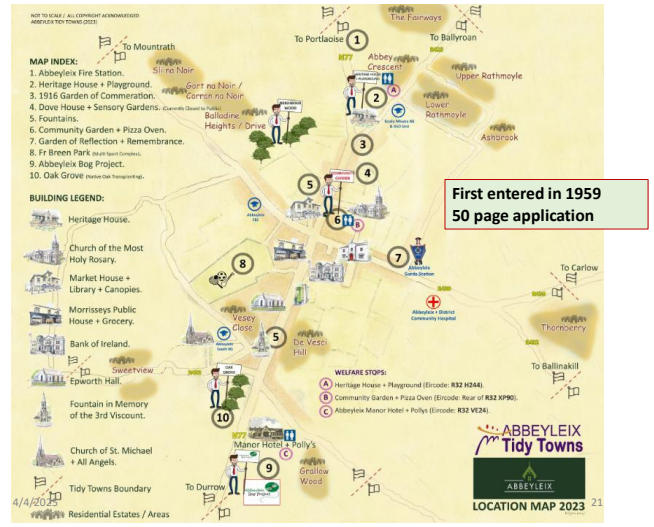
Straffan, Co. Kildare

## Residential Estates Map



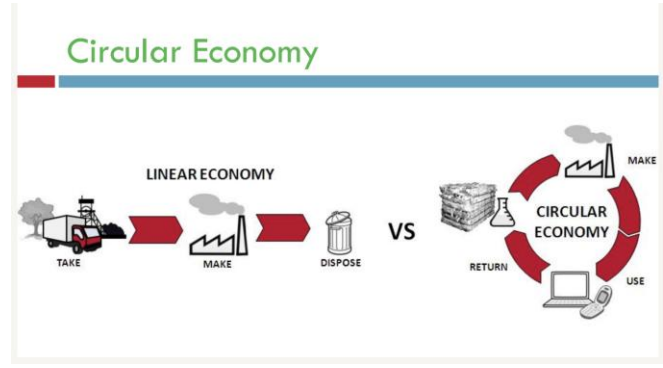
20





21

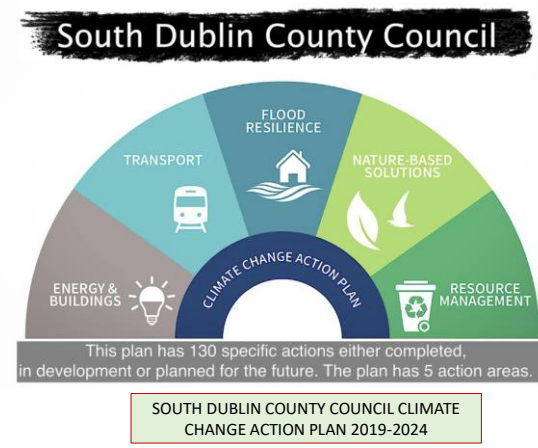
Sustainability – Doing More With Less



23

2024		SUSTAINABILITY – DOING MORE WITH LESS.	
<b>Kerry</b>		<b>Kilkenny</b>	
Cahirsiveen	28	Kilkenny	26
Glenbeigh	28	Inistioge	30
Kenmare	28	Windgap	21
Tralee	29		
Waterville	26		
<b>Offaly</b>		<b>Limerick</b>	
<b>Clare</b>		Geashill	30
Ennis	29	Galbally (376)	34
Kilrush	30	Castleconnell (372)	28
		Adare (381)	27
		Ballincollig	25
		Abbeylax	35

22



24

## Sustainability – Doing More With Less

## Reuse

- ❑ Share
  - ❑ Book Box, Free Libraries
  - ❑ Organise a platform for sharing baby clothes and equipment
- ❑ Events
  - ❑ Swap event for uniforms, sports gear, tools, toys, clothes
  - ❑ Bring & Buy sale
  - ❑ Greener parties
- ❑ Competitions
  - ❑ Organise an upcycling competition
  - ❑ Competition to create items from reused materials

4/4/2025

25

25

## Sustainability – Doing More With Less

## Upcycling



4/4/2025

26

26

- Support your local Charities & Voluntary Groups
- Local Shoe Box Appeal
- Take one /leave one behind
- Include marginalised individuals

## SOCIETY

- Book Swap
- Free community Library
- Skill Share



Berrings, Co. Cork

- Clothes swaps and second-hand sale
- Second-hand toy sales
- Poster Free Election Policy

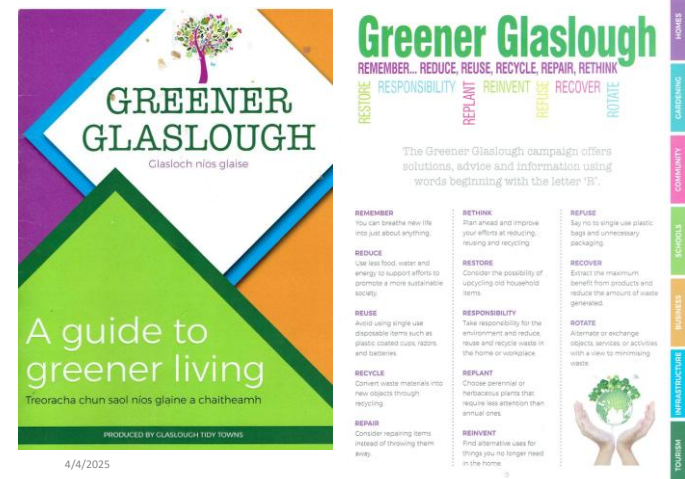
- Local Communities are the experts
- Comhairle Na nÓg
- Local Groups

4/4/2025

27

27

## Sustainability – Doing More With Less



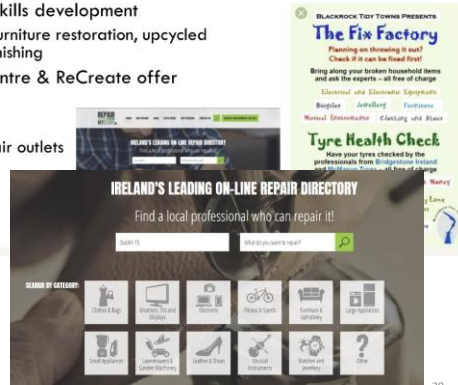
4/4/2025

28

## Sustainability – Doing More With Less

## Repair #MakeThingsLast

- Repair My Stuff.ie
- Workshops & Skills development
  - Respraying, furniture restoration, upcycled furniture, refinishing
- Rediscovery Centre & ReCreate offer courses
- Repair Guide
  - List local repair outlets
- Bike Repair
- Repair Cafes
- Repair Friday



4/4/2025

29

29

## Sustainability – Doing More With Less

## What is a Sustainable Energy Community (SEC)?



A community that works together to develop a sustainable energy system for the benefit of the community

- Aiming to be as energy efficient as possible;
- Use renewable energy where feasible;
- Consider smart energy solutions

It can be as small as a street or as large as a county or region

EU Definition:  
Community energy refers to collective energy actions that foster citizens' participation across the energy system.



4/4/2025

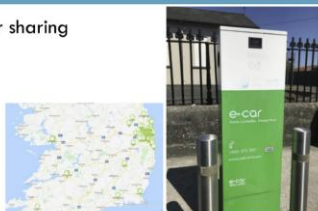
30

30

## Smarter Travel

## Sustainability – Doing More With Less

- Promotion of car sharing
- Electric vehicles
- Charge points
- WOW / COW
- Cycle Bus



## Quick List -Sustainable Transport

- ✓ Green Schools Travel Theme - [www.greenschools.ie](http://www.greenschools.ie)
- ✓ Promote Walking – Walkability Survey, Get Ireland Active, Operation Transformation, Healthy Heart Walks
- ✓ Cycling – Safe cycle routes, cycle –skills local cycle clubs, family fun cycles
- ✓ Park'n'ride – Park'n'Stride
- ✓ Car Pooling
- ✓ Using Public Transport

4/4/2025

31

31

## Sustainability – Doing More With Less

## Shop Local

- Environmental benefits, supporting local jobs, businesses reinvest into community



Promoting Local Shopping - Supporting local jobs

Shop in to be an active local shopping initiative aimed at encouraging customers to spend in Lifford and an support local jobs and local businesses.



4/4/2025

32

32



## Sustainability – Doing More With Less

- Shop Local
- Community based workshops
- Community driven activities/festivals

## ECONOMY

- Local Markets
- Energy Co-ops
- Work with industry in your communities
- Such as Supervalu

- Look at social inclusion in your area
- Join or start a Befriending initiative
- Local Information points

- My Waste
- Stop Food Waste Programme
- Environmental Policy -Ditch the disposables
- Reuse, Recycle, Upcycle
- Conscientious Consumerism think Local

4/4/2025

33

33

## Herbicides - Over use is not attractive and harmful for the environment



Better approach  
used in Dromod,  
Co. Leitrim

34

34

## Sustainability – Doing More With Less



35

## BIOCIDES

## Sustainability – Doing More With Less

## 7.5 Eobiotic herbicides

Eobiotic refers to substances that are endogenous to an ecological system. Eobiotic herbicides are therefore made with ingredients extracted directly from plants or animals, or microbial synthesis, e.g. vinegar, as opposed to being produced synthetically i.e. xenobiotic. A range of eobiotic materials have been tried for weed control, including plant oils such as pine, cypress, cedar, manuka, eucalyptus, red clover, clove, lemongrass, cinnamon, mint, rosemary and sage. Allelopathic maize and mustard seed mixes, fatty acids derived from plant oils including pine, coconut and rape seed, and concentrated organic acids including acetic acid and citric acid have also been researched. Being eobi-

otic, they are biodegradable and leave no residues. However, all of them are general biocides so they do not just kill weeds, but they may well impact non-target species as well. Thus, in the interest of preserving species beneficial to the farming system, eobiotic herbicides should be used as a last resort rather than a first resort.

Nevertheless, there is an urgent need for more research to accelerate the development and implementation of effective organic-compliant herbicides that are environmentally safe and that help the producer meet increasing consumer demand for organic products.

**Examples include plant oils such as pine, cypress, cedar, manuka,, eucalyptus, red clover, clove, lemongrass, cinnamon, mint, rosemary and sage.**

4/4/2025

36

36

### Sustainability – Doing More With Less

## Alternative Weed Control Options

**Prevention:** While it's not possible to prevent 100% of weed growth, there are several measures which would suppress weed growth, including a more regular cleaning programme of footpaths and gullies to prevent a build-up of growing substrates. Hand-held and Tractor-mounted weed brushes have been successfully used in other Cities.



4/4/2025

37

37

### Sustainability – Doing More With Less

## Alternative Weed Control Options

**Novel techniques:** Thermal weeding (flame or hot air), foam, steam, and hot water weeding, and vinegar have been trialed in different countries with various degrees of success. Novel techniques may be appropriate in certain situations, but would need to be tested on a case-by-case basis within Dublin City.



4/4/2025

38

38

### Hot Foam



Hot foam machine: (a) lateral view of the machine with the 1000 L water container, the 300 mm wide manual foam hot foam distribution tool, and the covered part containing the foam container, the boiler, the programmable logic controller, the pump and the diesel generator set, (b) hot foam distribution tool and example of a hot foam layer.

- It incorporates a liquid foam made of plant oils and sugars, which is mixed with hot water and sprayed via a hand wand directly onto weeds. The foam then forms a layer of insulation, keeping the heat on the weeds long enough for it to penetrate their leaves' outer surface, then travel down their stems and into their roots – effectively killing them.

4/4/2025

39

39

By Ben Cawson  
October 12, 2022



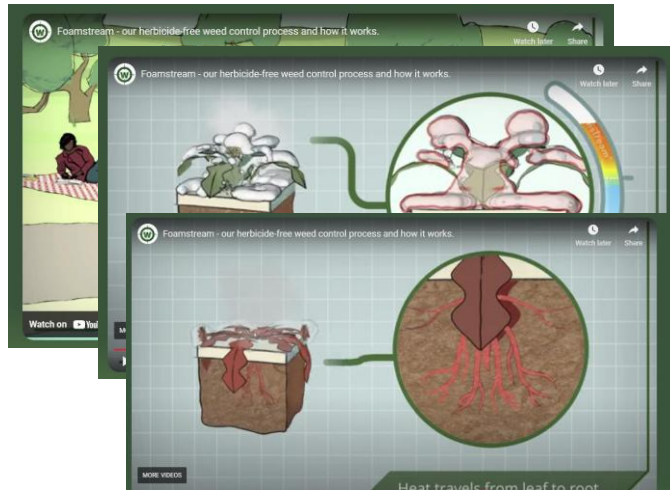
Pictured here being used to kill weeds between cobblestones, Foamstream has recently been trialed on olive groves in Greece. Woodgates

- Foamstream reduced weed biomass by 81 to 96 percent, as compared to mowing, mulching, pelargonic acid, or no treatment.
- Its performance more or less matched that of glyphosate, which is the sort of eco-unfriendly herbicide it's intended to replace.

4/4/2025

40

40



4/4/2025

41

41

### Sustainability – Doing More With Less



4/4/2025

43

## Invasive Plants

- **Economic Cost**
- **Environmental impact**
  - US 50,000 non-native invading species
  - \$26 billion per year since 2010
  - EU €12 billion per annum
  - UK £1.7 billion per annum

Alliaria petiolata



(Garlic mustard) introduced into America as a culinary herb in the 1860's

4/4/2025

42

42

### Sustainability – Doing More With Less

#### >REMEMBER

##### TIPS TO AVOID WASTING WATER

Water is essential for all life and it is our responsibility to protect it. The water that comes into our taps comes from the Lough which is fed by the Mountain Vase River, a tributary of the Blackwater River that flows north to Lough Neagh. Below is some advice on how to protect and minimise the use of water in our homes.

##### A basin in the sink

A basin is useful for washing dishes by hand or collecting the water you use to rinse fruit and vegetables. This water can then be used for watering plants.

##### A jug of water in the fridge

Having a jug of cold water to drink can waste more than 10 litres in a day. Instead, keep a supply of cold drinking water in the fridge.

##### Correct saucepan size

Choose the correct size of saucepan when cooking. Remember to use the lid on a pot or pan to reduce the amount of water lost to evaporation.

##### Bucket and sponge to wash your car

Using a hose to wash your car uses more water in one hour than the average family uses in a day. Using a bucket can save about 100L of water each time.

##### Toilet cistern bag

This device fits in the water cistern of your toilet and is filled with water causing it to expand and displace volume in the tank. This means that every time you flush the toilet, less water is used.

##### Dripping taps

Did you know that a dripping tap can waste 25 litres of water in one day? Ensure taps are always turned off correctly.

##### Shower time

A 5-minute shower uses approximately 100 litres of water. You can use a shower timer to help calculate and reduce the time you spend in the shower.

##### Aerator tap/showerhead

An aerator tap or showerhead pumps air into the water flow, which reduces the amount of water you use for the sink or the shower.

##### Water butt

A water butt can be positioned to catch the run-off from the roof or gutters of your property and this harvested water can be used for watering your garden or washing the car.

##### Dual flush

Dual flushing systems for toilets give you the option to use a smaller volume of water per flush. Most modern toilets are fitted with a dual flush system, but they can also be very fitted to existing systems.

##### Washing appliances

Made sure your washing machine and dishwasher are always fully loaded before putting in a wash to save water and money on energy bills.

##### Brushing your teeth

It is not necessary to leave the water running while you brush your teeth. Turn off the tap when it is not being used.

##### Watering plants and flowers

Don't over-water plants and collect rainwater in a water butt and use it to water outdoor areas.

##### Water mains and meter location

Know where your water mains valve is located in case you need to turn it off in a hurry. Check your meter regularly for leaks.

Source: [www.water.ie](https://www.water.ie)

The water-saving devices mentioned above are available from DIY stores or garden centres. You can contact a plumber for advice on which devices are suitable for you.

Water butt

Dual flush

Washing appliances

Brushing teeth

Watering plants and flowers

Water mains and meter location

44

44



## Sustainability – Doing More With Less

## Quick Tips for Water Conservation

- Fix leaks or drips
- Monitor meter readings – graph
- Install flush/flow control devices
- Green Schools – water saving actions
- Install auto-shut off or push taps
- Rainwater harvesting
- Gardening/planting to conserve water



4/4/2025

45

45

## Sustainability – Doing More With Less

## Rain Planters

A planter fed by rainwater which would normally go into a drain.

- Also known as stormwater planters, bioretention planters, filtration planters.
- 'Disconnect the Downpipes'
- Sealed unit - various options to adapt.
- **Rainwater is contained, filtered, slowed.**
- **Key advantage - unlike rain gardens, rain planters can be positioned close to buildings.**
- Outflow can be directed back down the original drain or onwards into the garden.



4/4/2025

46

46

Rain Gardens in Carlow town



47

THANK YOU FOR  
YOUR ATTENTION

4/4/2025

48

48