

Active Travel Limerick

Newsletter #35

14th of March 2025

#ActiveTravelLimerick



Comhairle Cathrach
& Contae **Luimnigh**

Limerick City
& County Council

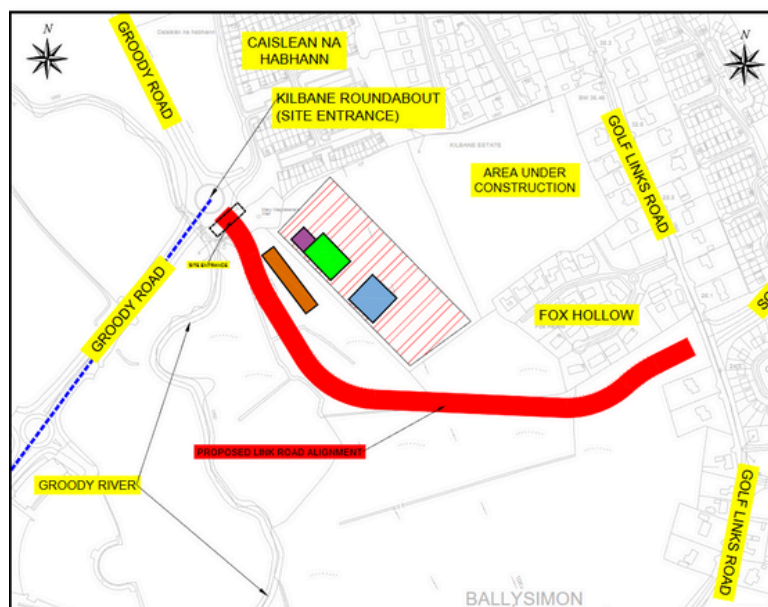


Castletroy Link Road

Limerick City and County Council's Active Travel team has lodged a planning application to An Bord Pleanála proposing the construction of a new distributor road in Castletroy. The proposal would link the **Golf Links Road from the Schoolhouse Road junction with the Groody Road at the Southern leg of Kilbane Roundabout.**

The proposed development will consist of the following:

- A new distributor road of approximately **680m** in length with a cross-section consisting of **9.7m** wide carriageway (including a **3.5m** wide bus lane, footpaths, segregated cycle-track, planted verges with 1 in 2 road embarkment side slopes.
- Upgrading of both the **Schoolhouse Road/Golf Links Road junction and the Kilbane roundabout to a signalised protected junction arrangement.**
- Tree and vegetation removal with tree re-planting and associated landscaping works.
- Provision of bus stop infrastructure with toucan crossing facility for pedestrians & cyclists.
- Fencing, LED public lighting, safety barriers, road signage, traffic signal poles and all associated site development works.



Castletroy Link Road

A copy of the plans and particulars including the Natura Impact Statement will be available for inspection and/or purchase at a fee not exceeding the reasonable cost of making a copy, **from 3rd March 2025 to 17th April, 2025 during public opening hours** (excluding bank holidays) at the Customer Services Desk, Limerick City & County Council, Merchant's Quay, Limerick, V94 EH90 and at the Planning and Environmental Services Department, Limerick City & County Council Offices, Dooradoyle Road, Limerick, V94 WV78.

Existing



Proposed



Plans and particulars of the proposed development will also be available for inspection online during the above timeframe at <https://mypoint.limerick.ie>.

Any submissions or observations must be received by An Bord Pleanála not later than 5.30 pm on Thursday 17th April, 2025

Wickham Street to Clare Street

Members of the public attended an information session on the progression of the proposals on Thursday, 6th March, 2025 at the Citizen Innovation Lab., Sarsfield Street.

The route which will proceed to a statutory planning process for the Wickham Street to Clare Street Active Travel Scheme is the proposed 'yellow' route, which begins at **Parnell Street and goes through Wickham Street, on to High Street and Mungret Street, before coming on to Broad Street and finishing on Clare Street, connecting to the Park Canal.** This route will now be progressed by the Active Travel team with a view to submitting a statutory planning application thereafter.

[A diagram of the 'Yellow' route for the project, which will now proceed through a statutory planning process can be viewed here,](#)



Bus Shelter

The construction of a new bus shelter and associated works is now completed in **Ballylanders, Co. Limerick**.

Before and after images of the bus shelter are shown below:

Before



After



We extend our sincere gratitude to our colleagues in the **Cappamore-Kilmallock Operations team of the District Roads Area** for their exceptional work in completing these schemes.

Towns and Villages Schemes

Note: The Active Travel team is tasked with providing new and upgraded pedestrian infrastructure across Limerick City & County Council's Metropolitan and Municipal districts.

Active Travel Limerick has recently funded works in **Croom, Co. Limerick**, that are now completed.

The works included refurbishment and widening of existing footpaths and associated drainage works and upgrading of public lighting on the **L1408** from what is known locally as **Towerfield Link to Croom Hospital**. This improves connectivity from **Croom Orthopaedic Hospital & Croom Medical Centre** towards **Croom Town Centre**.



We extend our sincere gratitude to our colleagues in the **Adare-Rathkeale Operations team of the District Roads Area** for their exceptional work in completing these schemes.

Mill Road Scheme

The following works are anticipated to be carried out as part of the Mill Road Scheme over the coming weeks:

- Continue footpath construction.
- Continue boundary wall construction adjacent to private properties.
- ESB and Eir to commence diversion of overhead lines.
- Surfacing to accesses/entrances.



R510 Raheen Roundabout to Quinn's Cross Scheme Night Works

Remaining road surfacing works on the project are to be completed overnight during the period commencing Monday 3rd March 2025 and running until Friday 4th April 2025. The works will be carried out from Monday to Thursday nights during the hours of 7pm to 4am.

The decision to carry out these works at night has been made following engagement between Limerick City & County Council, project contractor P&D Lydon and local stakeholders including businesses and St Nessian's National School.

The works will involve removing a layer of the existing road surface, before applying a new layer of tarmac to the road. This will improve the road's strength and durability and extend its life span. The surfacing works will ensure a safer, smoother road which enhances the experience of all road users.

A traffic management system will be put in place during these hours and restricted traffic movements, including local diversion routing via Father Russell Road and Church Road, during the above working hours are expected. **Noise monitoring will be carried out on a regular basis.**



R510 Raheen Roundabout to Quinn's Cross Scheme

Raheen Roundabout - Quinns Cross Roundabout (Daytime)

(Week Commencing Tuesday 18th of March '25)

- Completion of landscaping.
- Completion of finishing works and boundary treatments.
- Signage and road markings ongoing in sequence with the completion of surfacing works.
- Completion of public lighting installation.

Raheen Roundabout - Church Rd. Junction - St. Nessans NS - Mungret Gate Junction (Night works 7pm-4am, Mon-Thurs. each week)

Week Commencing Tuesday 18th of March '25)

- R510 Surfacing - Stone mastic asphalt (SMA) surface course. Road closure to this section of the R510 with diversion routes in place.



All works are off line to the R510 with two way traffic maintained. On occasion for a short duration Stop/ Go TTM may be required to facilitate the movement of plant/ delivery vehicles to and from the work areas.

R510 Raheen Roundabout to Quinn's Cross Scheme

St. Nessans NS - Quinns Cross Roundabout (Night works 7pm-4am, Mon-Thurs. each week)

(Week Commencing Monday 24th of March '25)

- R510 Surfacing - Completion of stone mastic asphalt (SMA) surface course.
- SMA surface course to cycle lanes. Road closure to this section of the R510 with diversion routes in place.



All works are off line to the R510 with two way traffic maintained. On occasion for a short duration Stop/ Go TTM may be required to facilitate the movement of plant/ delivery vehicles to and from the work areas.

ACTIVE TRAVEL LIMERICK

We are always happy to help with any queries
you may have on our Active Travel projects



Active Travel Limerick

Email: activetravel@limerick.ie

PHONE 061 556000

WWW.LIMERICK.IE

WWW.NATIONALTRANSPORT.IE