

SEA STATEMENT

FOR THE

ABBEYFEALE LOCAL AREA PLAN 2023-2029

for: Limerick City and County Council

City Hall
Merchant's Quay
Limerick
County Limerick



Comhairle Cathrach
& Contae **Luimnigh**

Limerick City
& County Council

by: CAAS Ltd.

1st Floor
24-26 Ormond Quay Upper
Dublin 7



OCTOBER 2023

Table of Contents

Section 1	Introduction	1
1.1	Introduction and Legislative Context	1
1.2	Content of the SEA Statement	1
1.3	Implications of SEA for the Plan	1
Section 2	How Environmental Considerations were integrated into the Plan ..	2
2.1	Overview	2
2.2	Consultations	2
2.3	Communication of environmental sensitivities throughout the SEA process	2
2.4	Appropriate Assessment	2
2.5	Strategic Flood Risk Assessment	3
2.6	Consideration of Alternatives	3
2.7	Integration of environmental considerations into Zoning of the Plan	3
2.8	Integration of individual provisions into the text of the Plan	3
2.9	Integration of individual provisions into the text of the Development Plan	3
Section 3	Environmental Report and Submissions/ Observations	23
3.1	Introduction	23
3.2	SEA Scoping Notices and Submissions	23
3.3	Submissions on the Environmental Report for the Draft Plan	26
3.4	SEA documents including SEA Environmental Report	26
Section 4	Summary of Alternatives considered	27
4.1	Introduction	27
4.2	Limitations in Available Alternatives	27
4.3	Land Use Zoning Alternatives	27
4.4	Transport Infrastructure Alternatives	29
4.5	Reasons for choosing the Plan in the light of the other reasonable alternatives dealt with	29
Section 5	Monitoring Measures	30
5.1	Introduction	30
5.2	Indicators and Targets	30
5.3	Sources	30
5.4	Reporting	31

Section 1 Introduction

1.1 Introduction and Legislative Context

This is the Strategic Environmental Assessment (SEA) Statement for the Abbeyfeale Local Area Plan 2023-2029.

SEA is a systematic process of predicting and evaluating the likely environmental effects of implementing a plan, or other strategic action, in order to ensure that these effects are appropriately addressed at the earliest appropriate stage of decision-making on a par with economic and social considerations.

Directive 2001/42/EC of the European Parliament and of the Council of Ministers, of 27th June 2001, on the Assessment of the Effects of Certain Plans and Programmes on the Environment, referred to hereafter as the SEA Directive, introduced the requirement that SEA be carried out on plans and programmes which are prepared for a number of sectors, including land use. The SEA Directive was transposed into Irish Law through the European Communities (Environmental Assessment of Certain Plans and Programmes) Regulations 2004 and the Planning and Development (Strategic Environmental Assessment) Regulations 2004. The Regulations have been amended by the European Communities (Environmental Assessment of Certain Plans and Programmes) (Amendment) Regulations 2011 and the Planning and Development (Strategic Environmental Assessment) (Amendment) Regulations 2011.

1.2 Content of the SEA Statement

Where SEA is undertaken, the Regulations require that a Statement is made available to the public and the competent environmental authorities after the making of the Plan.

This Statement is referred to as an SEA Statement.

The SEA Statement is required to include information summarising:

- a) how environmental considerations have been integrated into the Plan;
- b) how the following have been taken into account during the preparation of the Plan:
 - the environmental report,
 - submissions and observations made to the planning authority on the Draft Plan and Environmental Report, and
 - any transboundary consultations (these are not relevant to this SEA).
- c) the reasons for choosing the Plan in the light of the other reasonable alternatives dealt with; and
- d) the measures decided upon to monitor the significant environmental effects of implementing the Plan.

1.3 Implications of SEA for the Plan

SEA has been undertaken on the Plan and the findings of the SEA are expressed in an Environmental Report, the first published version of which accompanied the Draft Plan on public display. The Environmental Report was updated in order to take account of changes to the original Draft Plan that were made on foot of submissions and recommendations in the submissions.

Limerick City and County Council have been provided with the findings of SEA output during their consideration of the Plan and before the Plan was adopted.

Section 2 How Environmental Considerations were integrated into the Plan

2.1 Overview

Environmental considerations were presented to the Council for its consideration through:

1. Consultations;
2. Communication of environmental sensitivities throughout the SEA process;
3. Appropriate Assessment;
4. Strategic Flood Risk Assessment;
5. Consideration of alternatives;
6. Integration of environmental considerations; and
7. Integration of individual SEA and AA provisions into the Plan.

All parts of the Plan-preparation process were informed by the SEA, AA and SFRA processes - this includes the preparation of the Draft Plan and subsequent consideration of Proposed Material Alterations.

2.2 Consultations

As environmental authorities identified under the Planning and Development (SEA) Regulations, as amended, the following authorities were sent SEA scoping notices indicating that submissions or observations in relation to the scope and level of detail of the information to be included in the environmental report could be made to the Limerick City and County Council; Environmental Protection Agency; Department of Environment, Climate and Communications; Department of Agriculture, Food and the Marine; Department of Housing, Local Government and Heritage; Clare County Council; Kerry County Council; Cork County Council; and Tipperary County Council. Detail on submissions made on foot of the SEA scoping notice is provided under Section 3.2.

2.3 Communication of environmental sensitivities throughout the SEA process

Environmental considerations were integrated into the Plan before it was placed on public display. Individual sensitivities that were considered by the Planning Team preparing the Plan included the following:

- European Sites (Special Areas of Conservation and Special Protection Areas);
- Other Ecological Designations;
- Status of Surface and Ground Waters;
- Various entries to the Water Framework Directive's Register of Protected Areas;
- Groundwater Vulnerability;
- Water Services Capacity, Performance and Demand;
- Cultural heritage (archaeological and architectural) sensitivities; and
- Landscape Designations.

A number of these sensitivities are mapped on Figures 2.1 to 2.3.

2.4 Appropriate Assessment

Appropriate Assessment (AA) Screening and Stage 2 AA have been undertaken alongside the Plan. The requirement for AA is provided under the EU Habitats Directive (Directive 1992/43/EEC). The conclusion of the AA is that the Plan will not affect the integrity of the European Sites, alone or in combination with other plans or projects.¹ The preparation of the Plan, SEA and AA has taken place concurrently and the findings of the AA have informed the SEA.

¹ Except as provided for in Article 6(4) of the Habitats Directive, viz. There must be: (a) no alternative solution available, (b) imperative reasons of overriding public interest for the plan to proceed; and (c) adequate compensatory measures in place.

2.5 Strategic Flood Risk Assessment

A Strategic Flood Risk Assessment (SFRA) has been undertaken alongside the preparation of the Plan. The requirement for SFRA is provided under 'The Planning System and Flood Risk Management Guidelines for Planning Authorities' (Department of Environment and Office of Public Works, 2009) and associated Department of the Environment, Community and Local Government Circular PL2/2014. The preparation of the Plan, SEA and SFRA has taken place concurrently and the findings of the SFRA have informed both the Plan and the SEA.

2.6 Consideration of Alternatives

Consideration of the environmental effects arising from a variety of different alternatives for the Plan (see Section 4) has contributed towards the protection and management of the environment within the Plan area.

2.7 Integration of environmental considerations into Zoning of the Plan

Environmental considerations, including those relating to ecology, cultural heritage, landscape and water, were integrated into the Local Area Plan's zoning through an interdisciplinary approach which was informed by the environmental considerations identified by the SEA, AA and SFRA processes.

Zoning has been applied in a way that primarily seeks to achieve sustainable and compact growth, taking into account the various requirements set out in the higher-level NPF, Southern RSES and Limerick Development Plan 2022-2028.

Flood risk management and drainage provisions are already in force through the Development Plan and related provisions have been integrated into the LAP. In addition, land use zoning contained within the Plan has been informed by the SFRA process and associated

delineation of flood risk zones. The detailed Plan preparation process undertaken by the Planning Department combined with specialist input from the SFRA process facilitated zoning that helps to avoid inappropriate development being permitted in areas of high flood risk.

2.8 Integration of individual provisions into the text of the Plan

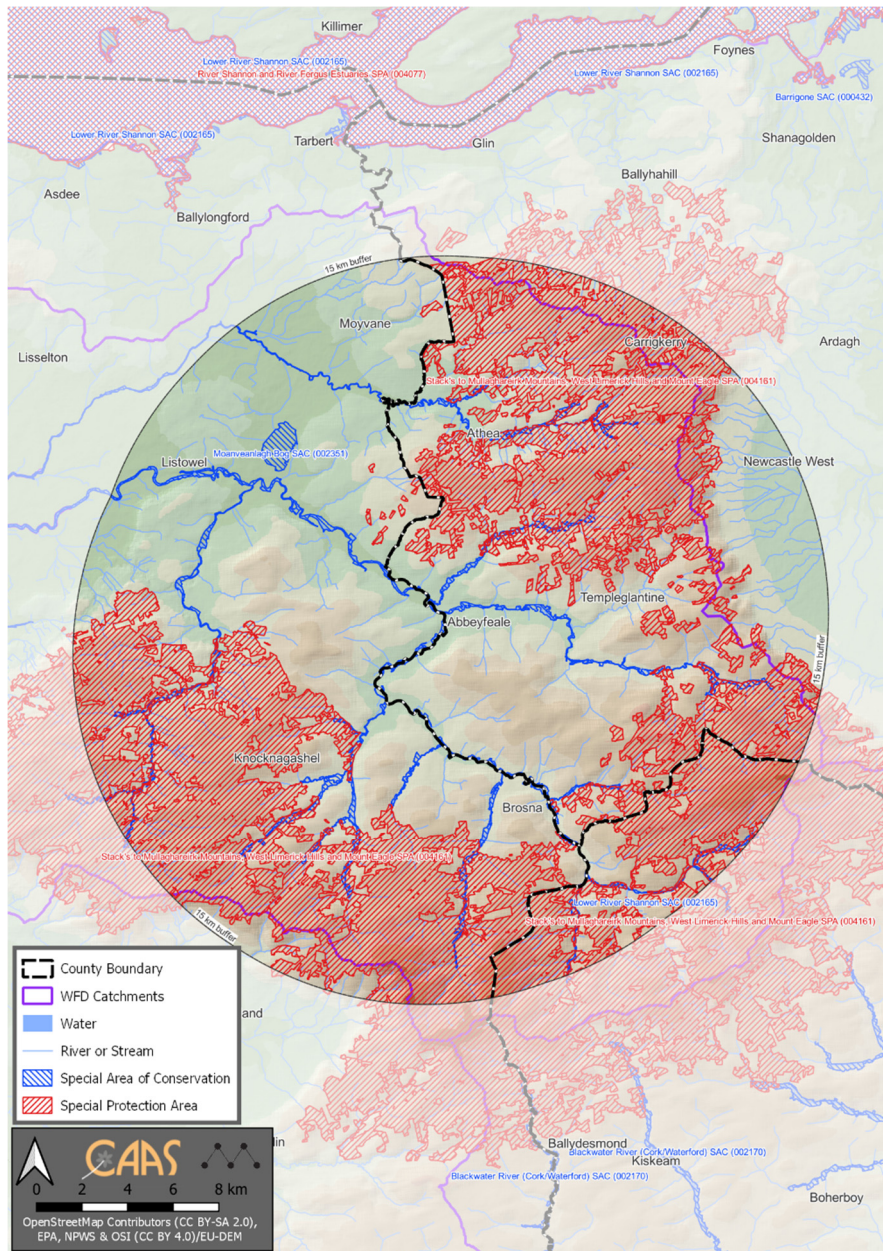
Various provisions have been integrated into the text of the Plan through the Plan-preparation and SEA, SFRA and AA processes. Both the Planning and the assessment teams contributed towards the mitigation which was developed over multiple iterations and was informed by, inter alia, various communications through the SEA, AA and SFRA processes.

Table 2.1 links key mitigation measure(s) to the likely significant effects of implementing the Plan, if unmitigated. The measures generally benefit multiple environmental components i.e. a measure providing for the protection of biodiversity, flora and fauna could beneficially impact upon the minimisation of flood risk and the protection of human health, for example.

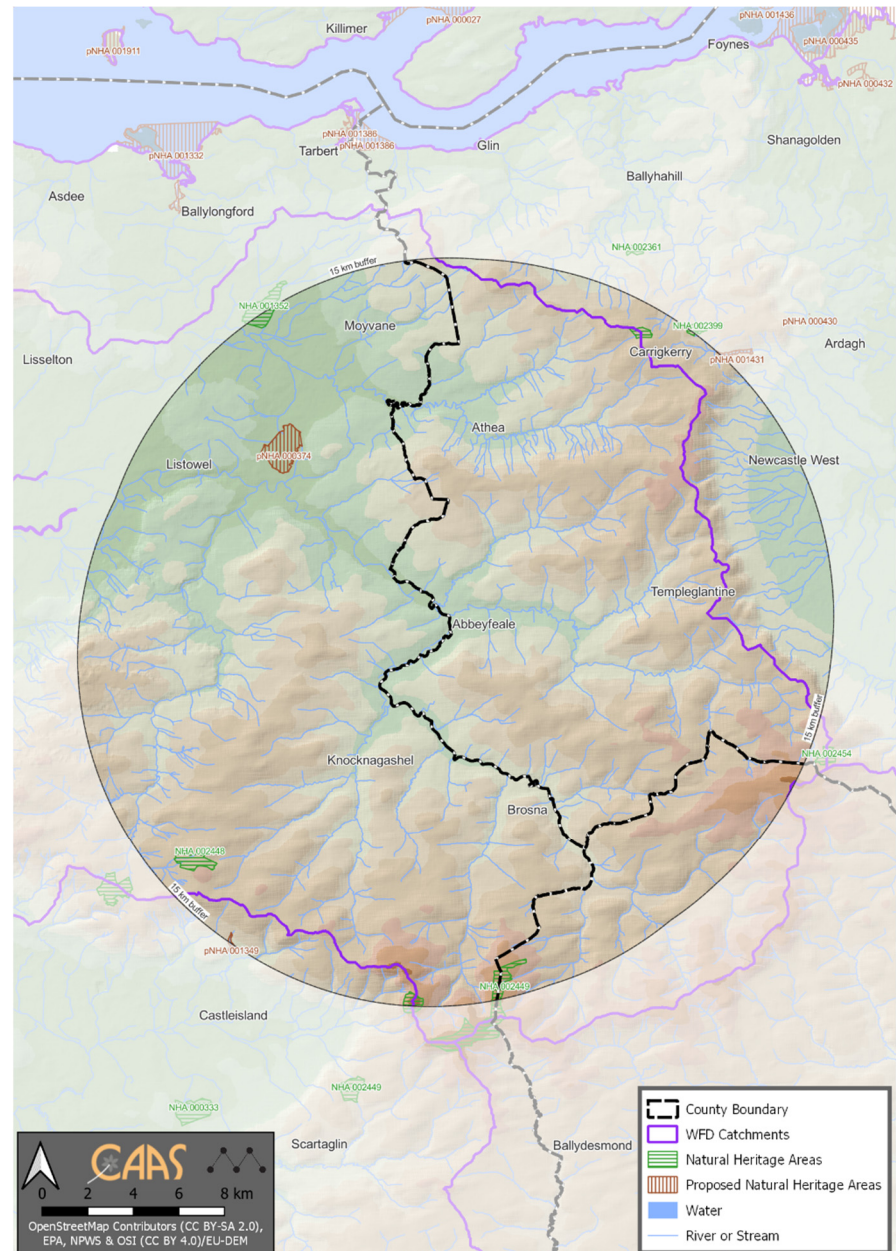
2.9 Integration of individual provisions into the text of the Development Plan

In addition to the individual provisions integrated into the text of the Local Area Plan, individual provisions relating to environmental protection and management have been integrated into the existing Limerick Development Plan 2022-2028. These measures, which must be complied with by development under the Local Area Plan², are identified alongside the Local Area Plan measures on Table 2.1.

² As detailed under Section 10.1 "Land Use Zoning and Implementation", the overarching policies and objectives of the Limerick Development Plan 2022 -2028 and any replacement thereof also apply. All development requiring planning permission must adhere to the Policies, Objectives, Development Management Standards and other requirements of the Limerick Development Plan 2022-2028, or any replacement thereof.



European Sites within and within 15 km buffer of Plan area



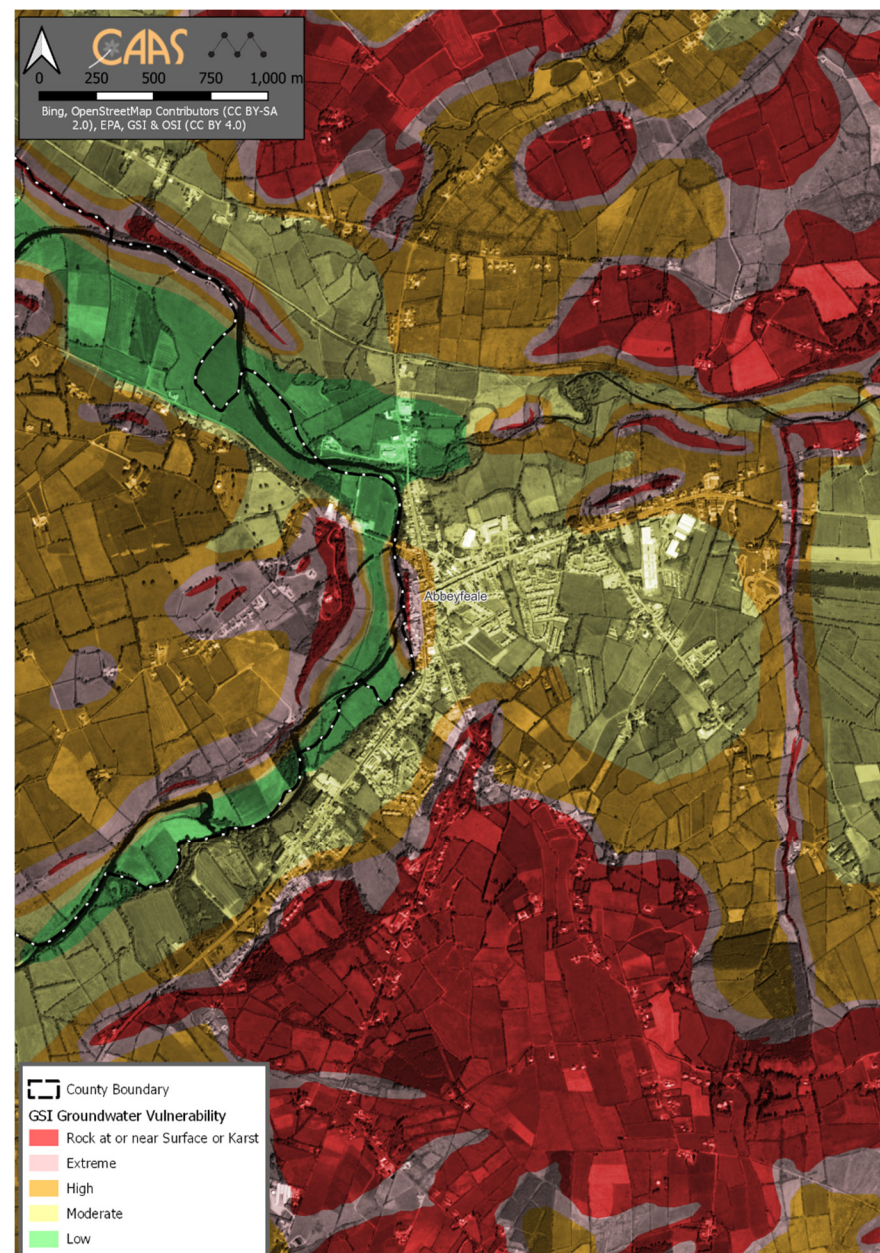
NHAs and pNHAs within and within 15 km buffer of Plan area

Figure 2.1 Selection of Individual Environmental Sensitivities taken into account (1 of 3)

CAAS for Limerick City and County Council

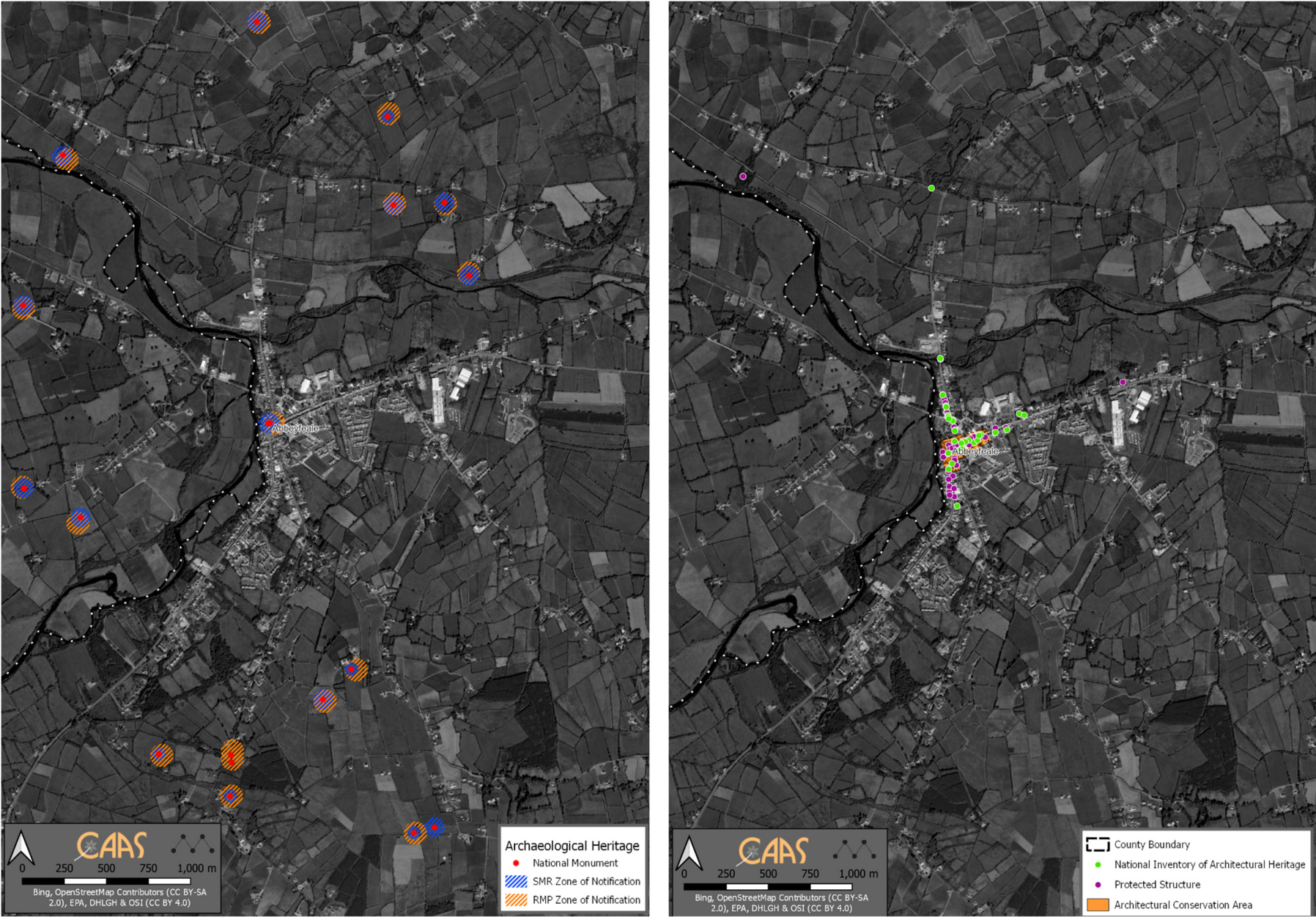


WFD Surface Waterbodies and WFD Ground Waterbodies Status (2016-2021)



Groundwater Vulnerability

Figure 2.2 Selection of Individual Environmental Sensitivities taken into account (2 of 3)



Archaeological Heritage

Architectural Heritage

Figure 2.3 Selection of Individual Environmental Sensitivities taken into account (3 of 3)

Table 2.1 Integration of Environmental Considerations into the Plan³

Topic	Potentially Significant Adverse Effect, if Unmitigated	Local Area Plan measures, including:	Existing Limerick Development Plan 2022-2028 measures, including:
Biodiversity and flora and fauna	<p>Arising from both construction and operation of development and associated infrastructure:</p> <ul style="list-style-type: none"> Loss of/damage to biodiversity in designated sites (including European Sites and Wildlife Sites) and Annexed habitats and species, listed species, ecological connectivity and non-designated habitats; and disturbance to biodiversity and flora and fauna; Habitat loss, fragmentation and deterioration, including patch size and edge effects; and Disturbance (e.g. due to noise and lighting along transport corridors) and displacement of protected species such as birds (e.g. swifts and owls) and bats. 	<p>Also refer to measures under other environmental components including Soil, Water and Air and Climatic Factors and Landscape.</p> <p>Objective CH 02: Blue Green Infrastructure: It is an objective of the Council to</p> <p>a) Develop and enhance blue and green infrastructure opportunities throughout Abbeyfeale and in line with the detail set out in Table 6: LAP Climate Action Opportunities.</p> <p>b) Promote connecting corridors for the movement of species and encourage the retention and creation of features of biodiversity value, ecological corridors and networks that connect areas of high conservation value, such as woodlands, hedgerows, earth banks, watercourses, wetlands and designated sites where possible. In this regard, new infrastructural projects and linear developments in particular, will have to demonstrate at design stage, sufficient measures to assist in the conservation of and dispersal of species.</p> <p>c) Protect existing ecosystems and biodiversity assets, such as natural woodland, natural watercourses and riparian habitats, layered ecosystems supporting flora, fauna, pollinators, invertebrates, micro-organisms and mycelium, where possible.</p> <p>Objectives C2 New Amenity Areas, Walkways and Cycleways: It is an objective of the Council to</p> <p>a) Continue to facilitate the development of walkways and cycleways as indicated on the Amenity and Sustainable Transport Map (Appendix 1, Map 3) in co-operation with all sectors, subject to funding. Any proposed development adjacent to walkways must incorporate connecting pathways in their design. Developments shall be designed to overlook proposed walkways and shall link existing and proposed residential areas to each other, to amenity areas and to provide connections to the town centre.</p> <p>b) Proposals for new Walkways/Cycleways, Greenways and Blueways will be subject to appropriate environmental assessments. Any development which would have adverse effect on the integrity of European sites or cause a net loss of bio-diversity will not be permitted.</p> <p>Objective ED 2: Tourism Objectives: It is an objective of the Council to</p> <p>a) Support growth in the tourism sector in Abbeyfeale by facilitating vital connections between complementary sites, attractions and town centre, and ensuring visitors can easily avail of services in Abbeyfeale town centre.</p> <p>b) Support the provision of a range of tourist accommodation types and infrastructure including, hostel accommodation, campervan/caravans sites, subject to be them being located on suitably zoned lands.</p> <p>c) Support Abbeyfeale's role in the Limerick Tourism Development Strategy 2019 - 2023 and any subsequent</p>	<p>Also refer to measures under other environmental components including Soil, Water and Air and Climatic Factors and Landscape.</p> <p><i>Policy EH P1 Protection of Natural Heritage and Biodiversity</i> It is a policy of the Council to:</p> <p>a) Protect and conserve Limerick's natural heritage and biodiversity, in particular, areas designated as part of the European Sites Natura 2000 network, such as Special Protection Areas (SPAs) and Special Areas of Conservations (SACs), in accordance with relevant EU Directives and national legislation and guidelines.</p> <p>b) Maintain the conservation value of all Natural Heritage Areas and proposed Natural Heritage Areas (pNHAs) for the benefit of existing and future generations.</p> <p><i>Policy EH P2 Sustainable Management and Conservation</i> It is a policy of the Council to ensure the sustainable management and conservation of areas of natural environmental and geological value within Limerick and to protect, enhance, create and connect, where ecologically suitable, natural heritage, green spaces and high-quality amenity areas for the benefit of biodiversity.</p> <p><i>Policy EH P3 Climate Action and the Natural Environment</i> It is a policy of the Council to take into account the contents of the National Biodiversity Action Plan and the Biodiversity Climate Adaptation Plan and any forthcoming guidance or legislation on climate action, whether adaptation or mitigation that will emerge during the course of the Plan.</p> <p><i>Policy EH P4 Compliance with Limerick's Heritage Plan</i> It is a policy of the Council to place ecological and environmental issues at the centre of planning policies and decisions and in doing so, will adhere to the objectives set out in Limerick's Heritage Plan 2017-2030.</p> <p><i>Policy EH P6 Water and Air Quality</i> It is a policy of the Council to ensure that water and air quality shall be of the highest standard, to ensure the long term economic, social and environmental well-being of Limerick's resources. The World Health Organisation Air Quality Guidelines will be the basis for the air quality guidance in Limerick.</p> <p><i>Policy EH P7 Environmental Noise</i> It is a policy of the Council to proactively manage environmental noise, where it may have a significant adverse impact on the health and quality of life of communities in Limerick and to support the aims of the Environmental Noise Regulations, through the development and implementation of Noise Action Plans.</p> <p><i>Objective EH O1 Designated Sites and Habitats Directive</i> It is an objective of the Council to ensure that projects/plans likely to have significant effects on European Sites (either individually or in combination with other plans or projects) are subject to an appropriate assessment and will not be permitted under the Plan unless they comply with Article 6 of the Habitats Directive. The Council, will through the planning enforcement process where applicable, seek to restore the ecological functions of designated sites, where they have been damaged through inappropriate development.</p> <p><i>Objective EH O2 Lesser Horseshoe Bat</i> It is an objective of the Council to require all developments in areas where there may be Lesser Horseshoe Bats, to submit an ecological assessment of the effects of the development on the species. The assessment shall include mitigation measures to ensure that feeding, roosting or hibernation sites for the species are maintained. The assessment shall also include measures to ensure that landscape features are retained and that the development itself will not cause a barrier or deterrent effect on the species.</p> <p><i>Objective EH O3 Ecological Impact Assessment</i> It is an objective of the Council to require all developments where there are species of conservation concern, to submit an ecological assessment of the effects of the development on the site and nearby designated sites, suggesting appropriate mitigation measures and establishing, in particular, the presence or absence of the following species: Otter, badger, bats, lamprey and protected plant species such as the Triangular Club Rush, Opposite Leaved Pond Weed and Flora Protection Order Species generally.</p> <p><i>Objective EH O4 Creation of New Habitats</i> It is an objective of the Council to:</p> <p>a) Seek the creation of new habitats by encouraging wild green areas and new water features such as, pools and ponds in new developments.</p> <p>b) Encourage management plans for green areas to use the minimum of pesticides and herbicides.</p> <p>c) The creation of areas that are not subject to public access in order to promote wildlife use is strongly encouraged.</p> <p><i>Objective EH O5 New Infrastructure Projects</i></p>

³ Non-material changes to individual Plan provisions referenced in this report may be updated during the finalisation of the Plan, including numbering, formatting and graphic design.

SEA Statement for the Abbeyfeale Local Area Plan 2023-2029

Topic	Potentially Significant Adverse Effect, if Unmitigated	Local Area Plan measures, including:	Existing Limerick Development Plan 2022-2028 measures, including:
		<p>replacement document.</p> <p>d) Require tourism projects to adhere to appropriate environmental and ecological assessment and to mitigate any adverse environmental, biodiversity and ecological impacts.</p> <p>e) Support community engagement in the development of tourism and amenity projects in the town.</p> <p>f) Seek to improve public realm opportunities, to make available spaces to facilitate the tradition of festivals in the town.</p> <p>g) Support of development of the Limerick Greenway, ancillary facilities, connectivity between the Greenway and the town centre, Abbeyfeale as a Greenway hub, with enhanced accessibility to the heritage and cultural assets of the town.</p> <p>Objective CH 04: Special Area of Conservation</p> <p>a) Protect and maintain the integrity of the Special Area of Conservation by the River Feale and protect the watercourses in Abbeyfeale, in accordance with the Semi-Natural Open Space zoning designation on the Land Use Zoning Map and the lands zoned Agriculture by the River Allaughan.</p> <p>b) Ensure the protection of a 20m riparian buffer zone on greenfield sites free from development. Proposals shall have cognisance of the contents of the Inland Fisheries Ireland document - Planning for Watercourses in Urban Environments.</p> <p>c) Ensure that appropriate wastewater infrastructure is available to support new developments to safeguard water quality.</p> <p>d) No projects which will be reasonably likely to give rise to significant adverse direct or indirect or secondary impacts on the integrity of any Natura 2000 sites, having regard to their conservation objectives arising from reduction in species diversity, shall be permitted on the basis of this plan (either individually or in combination with other plans or projects) ⁴.</p> <p>e) To seek to ensure the sustainable and responsible management of all leisure fishing and water-based activities within the Lower River Shannon SAC, in consultation with the National Parks and Wildlife Service and/or Inland Fisheries Ireland where relevant, and in compliance with the Salmonid River Regulations (SI No. 293/1988) and the Habitats Directive.</p> <p>Objective CH 05: Tree Protection and Nature Conservation: It is an objective of the Council to:</p> <p>a) Seek to protect natural stone boundary walls, ponds/wetlands, other natural features of local importance and mature trees, where possible. Development that requires the felling or harming of such trees will not generally be permitted, unless supported by a tree survey establishing that the subject trees are of no ecological or amenity value. Such report shall be undertaken by a suitably qualified and competent person.</p>	<p><i>It is an objective of the Council to require new infrastructure and linear developments in particular, to demonstrate at design stage sufficient measures to assist in the conservation of and dispersal of species and to demonstrate a high degree of permeability for wildlife, to allow the movement of species and to prevent the creation of barriers to wildlife and aquatic life in the wider countryside.</i></p> <p><i>Objective EH 06 Barn Owl Conservation</i></p> <p><i>It is an objective of the Council to require road developments to incorporate from the design stage, elements that will assist in the conservation of the Barn owl.</i></p> <p><i>Objective EH 07 All Ireland Pollinator Plan</i></p> <p><i>It is an objective of the Council to:</i></p> <p><i>a) Continue to actively support the aims and objectives of the All Ireland Pollinator Plan 2021 – 2025, by encouraging measures to protect and increase the population of bees and other pollinating insects in Limerick.</i></p> <p><i>b) Support the aims of the National Bio- Diversity Action Plan and succeeding plans, in emphasising the importance of ecological issues in planning.</i></p> <p><i>Objective EH 08 Roosting Habitats</i></p> <p><i>It is an objective of the Council to require the provision of alternative roosting or settlement facilities for species, such as bird or bat boxes, swift boxes, artificial holts (for otters), or other artificially created habitats in proposed developments, where considered appropriate.</i></p> <p><i>Objective EH 09 Geological Sites</i></p> <p><i>It is an objective of the Council to:</i></p> <p><i>a) Protect from inappropriate development, the County Geological Sites contained in the Limerick Geological Heritage Survey 2021.</i></p> <p><i>b) Seek the conservation and protection of features of geological interest within Limerick, particularly those that would have been recognised in the past as Areas of Scientific Interest or by the Geological Survey of Ireland as being of particular value.</i></p> <p><i>c) Undertake a survey of such sites during the lifetime of the Plan.</i></p> <p><i>Objective EH 010 Trees and Hedgerows</i></p> <p><i>It is an objective of the Council to:</i></p> <p><i>a) Retain and protect amenity and biodiversity value of the County and City by preserving as far as possible trees, woodlands and hedgerows, having regard to the significant role that trees and hedgerows play in local ecology, climate change and air quality and their contribution to quality place making and the associated health and wellbeing benefits.</i></p> <p><i>b) Require, in the event that mature trees or extensive mature hedgerow is proposed to be removed, that a comprehensive tree and hedgerow survey be carried out by a suitably qualified tree specialist to assess the condition, ecological and amenity value of the tree stock/ hedgerow proposed for removal and to include mitigation planting and a management scheme. The Council will seek in all cases to ensure when undertaking development, or when permitting development, that the loss of, or damage to, existing trees is minimised.</i></p> <p><i>c) Require the planting of native trees, hedgerows and vegetation and the creation of new habitats in all new developments and public realm projects. The Council will avail of tree planting schemes administered by the Forest Service, in ecologically suitable locations, where this is considered desirable.</i></p> <p><i>d) To identify and prepare TPO's where trees of exceptional amenity, cultural or environmental value are identified which warrant a high level of protection.</i></p> <p><i>e) To implement the Limerick City and County Tree Policy when completed and review as appropriate.</i></p> <p><i>Objective EH 011 Invasive Species</i></p> <p><i>It is an objective of the Council to:</i></p> <p><i>a) Work with and facilitate the work of agencies addressing the issue of terrestrial and aquatic invasive alien species (IAS), by implementing biosecurity measures, selected control measures and surveys, where appropriate.</i></p> <p><i>b) Address the presence of invasive alien species on derelict sites under the provisions of the Derelict Sites Act through the preparation of a management and eradication plan for these species.</i></p> <p><i>c) Require the submission of a control and management program for the particular invasive species as part of the planning process, if developments are proposed on sites where invasive species are present.</i></p> <p><i>d) Employ biosecurity measures to prevent the spread of invasive alien species and disease and to insist that all such measures are employed on all development sites.</i></p> <p><i>Objective EH 012 Blue and Green Infrastructure</i></p> <p><i>It is an objective of the Council to:</i></p> <p><i>a) Promote a network of blue and green infrastructure throughout Limerick.</i></p> <p><i>b) Promote connecting corridors for the movement of species and encourage the retention and creation of features of biodiversity</i></p>

⁴ Except as provided for in Article 6(4) of the Habitats Directive, viz. There must be: a) no alternative solution available; b) imperative reasons of overriding public interest for the plan to proceed; and c) Adequate compensatory measures in place.

SEA Statement for the Abbeyfeale Local Area Plan 2023-2029

Topic	Potentially Significant Adverse Effect, if Unmitigated	Local Area Plan measures, including:	Existing Limerick Development Plan 2022-2028 measures, including:
			<p>value, ecological corridors and networks that connect areas of high conservation value such as woodlands, hedgerows, earth banks, watercourses, wetlands and designated sites. In this regard, new infrastructural projects and linear developments in particular, will have to demonstrate at design stage, sufficient measures to assist in the conservation of and dispersal of species. Projects which would be detrimental to existing blue and green infrastructure features will not be permitted.</p> <p>c) Ensure the integration and strengthening of green infrastructure into the preparation of Local Area Plans.</p> <p>d) Where possible remove barriers to species movement, such as the removal of in-stream barriers to fish passage for example.</p> <p>e) Seek to advance the use of an ecosystem services approach and ecosystem services valuation as a decision-making tool in plans and projects, subject to appropriate ecological assessment.</p> <p><i>Objective EH O14 Nature Based Solutions</i> It is an objective of the Council to increase the use of Nature Based Solutions (NBS) throughout Limerick.</p> <p><i>Development Management Standards</i>, including under 11.3.8 "Landscaping", 11.3.9 "Trees",</p>
Population and human health	<ul style="list-style-type: none"> Potential adverse effects arising from flood events. Potential interactions if effects arising from environmental vectors. 	<p>Also refer to measures under other environmental components including Soil, Water and Air and Climatic Factors.</p> <p>Policy ED 1: Strategic Economic Development: It is a policy of the Council to Promote, facilitate and enable economic development and employment generating activities in Abbeyfeale on appropriately lands zoned lands, in a sustainable manner, in accordance with the Limerick Development Plan 2022 – 2028.</p> <p>Objective ED O1: Enterprise and Employment Objectives: It is an objective of the Council to</p> <p>a) Encourage the reuse and redevelopment of appropriately zoned vacant units, brownfield, derelict and infill sites for employment creation, subject to normal planning and environmental criteria.</p> <p>b) Ensure any proposals for the lands zoned for Enterprise and Employment adjoining the N21 include a Traffic and Transport Assessment, to ensure that the local road network and associated junctions with the regional road have sufficient capacity to facilitate the extent of the development planned. The costs of implementing mitigation measures arising from the assessment shall be borne by the developer. Any proposals on these sites shall ensure the provision of a minimum 20m landscaped buffer zone between proposed development and residential developments.</p> <p>c) Ensure any proposal for part of the lands zoned Enterprise and Employment does not preclude the development of the remaining zoning lands. Any proposal submitted on these lands shall include an indicative layout which allows for a coordinated development at Mountmahon.</p> <p>d) Retain sufficient lands around the site boundaries where industrial, enterprise or distribution activities are proposed to accommodate landscaping to soften the visual impact and reduce the biodiversity loss of the development.</p> <p>e) Early engagement with all utilities providers, including Uisce Eireann is strongly advised.</p> <p>f) Promote inter-urban linkages and partnerships across county boundaries, capitalising on collective strengths to attract investment in Abbeyfeale, the wider West Limerick /North Kerry region and the Atlantic Economic Corridor.</p>	<p>Also refer to measures under other environmental components including Soil, Water and Air and Climatic Factors.</p> <p><i>Objective EH O20 Noise and Vibration during Construction and at Open Sites</i> It is an objective of the Council to protect the quality of the environmental against the effects of noise and vibration, by implementing site appropriate mitigation measures during the construction and demolition phases of development.</p> <p><i>Objective EH O21 Commercial and Industrial Noise</i> It is an objective of the Council to prevent members of the public being significantly adversely effected by environmental noise from commercial and industrial noise activities.</p> <p><i>Objective EH O22 Entertainment Noise</i> It is an objective of the Council to manage entertainment noise from venues and music events, so as not to have an adverse effect on the public.</p> <p><i>Objective EH O25 Air Pollution</i> It is an objective of the Council to implement the provisions of national and EU Directives on air pollution and other relevant legislative requirements in conjunction with other agencies as appropriate.</p> <p><i>Objective EH O26 Improvement of Air Quality</i> It is an objective of the Council to improve air quality and help prevent people being exposed to unacceptable levels of pollution in Limerick, through the support of sustainable modes of transport, renewable energy, promotion of energy efficient buildings and homes and urban greening.</p> <p><i>Objective EH O27 Air Quality Monitoring</i> It is an objective of the Council to monitor and provide access to the public on the air quality in Limerick and support the EPA in the expansion and management of the national air quality monitoring network.</p> <p><i>Objective EH O28 Air Quality during Construction</i> It is an objective of the Council to protect environmental quality and implement site appropriate mitigation measures during construction and demolition phases of a development, with respect to air quality, including dust.</p> <p><i>Objective EH O29 Odour</i> It is an objective of the Council to protect the public from odour nuisance issues through odour abatement solutions.</p> <p><i>Policy EH P7 Environmental Noise</i> It is a policy of the Council to proactively manage environmental noise, where it may have a significant adverse impact on the health and quality of life of communities in Limerick and to support the aims of the Environmental Noise Regulations, through the development and implementation of Noise Action Plans.</p> <p><i>Policy EH P6 Water and Air Quality</i> It is a policy of the Council to ensure that water and air quality shall be of the highest standard, to ensure the long term economic, social and environmental well-being of Limerick's resources. The World Health Organisation Air Quality Guidelines will be the basis for the air quality guidance in Limerick.</p> <p><i>Objective TR O53 Noise and Transportation</i> It is an objective of the Council to identify appropriate mitigation measures to reduce noise levels from traffic where they are potentially harmful, in accordance with Limerick's Noise Action Plan.</p> <p><i>Objective TR O54 Noise Sensitive Development</i> It is an objective of the Council to require noise sensitive developments in close proximity to heavily trafficked roads to be designed and constructed to minimise noise disturbance, follow a good acoustic design process and clearly demonstrate that significant adverse noise impacts will be avoided in accordance with Professional Practice Guidance on Planning and Noise (2017) and based on the guidance and recommendations of the World Health Organisation.</p> <p><i>Objective IN O21 Hazardous Waste and Contaminated Sites</i> It is an objective of the Council to:</p>

SEA Statement for the Abbeyfeale Local Area Plan 2023-2029

Topic	Potentially Significant Adverse Effect, if Unmitigated	Local Area Plan measures, including:	Existing Limerick Development Plan 2022-2028 measures, including:
			<p>a) Implement the EPA's National Hazardous Waste Management Plan (NHWMP) 2014-2020 and any subsequent plans.</p> <p>b) Collaborate and seek guidance from the Environmental Protection Agency (EPA), the Health and Safety Authority (HAS), Health Service Executive (HSE) and Southern Region Waste Management Office, on the technical requirements for clearance and redevelopment of any contaminated lands when dealing with planning applications at these locations.</p> <p><i>Development Management Standards, including under 11.3.12 "Noise"</i></p>
Soil	<ul style="list-style-type: none"> Potential adverse effects on the hydrogeological and ecological function of the soil resource, including as a result of development on contaminated lands. Potential for riverbank erosion. 	<p>Also refer to measures under other environmental components including Water.</p> <p>Objective H2: Residential Compact Growth: It is an objective of the Council to:</p> <p>a) Ensure the sequential development of the serviced residential lands identified to cater for the envisaged population growth.</p> <p>b) Ensure that at least 30% of all new housing development is delivered within existing built-up areas, including infill, brownfield and greenfield sites.</p> <p>c) Consolidate existing development and increase existing residential density, through a range of measures, including re-use of existing buildings and infill development schemes.</p> <p>d) Ensure that in any proposed alterations to the streetscape of the town centre, adequate consideration is given to conservation, restoration and reconstruction, where it would affect the settings of protected structures, or the integrity of the eighteenth and nineteenth century streetscapes.</p> <p>Objective H4: Serviced Sites: It is an objective of the Council to:</p> <p>Permit serviced sites on adequately zoned lands within the settlement boundary of Abbeyfeale in line with the requirements outlined in the Limerick Development Plan. The Council requires a minimum net density of 10 dwelling units per hectare on lands zoned Serviced Sites.</p>	<p>Also refer to measures under other environmental components including Water.</p> <p><i>Objective SS 01 Compact Growth</i></p> <p>It is an objective of the Council to strengthen the core of settlements and encourage compact growth, through the development of infill sites, brownfield lands, under-utilised land/buildings, vacant sites and derelict sites, within the existing built-up footprint of the settlements and develop outwards from the centre in a sequential manner.</p> <p><i>Objective SS 04 Prevention of Urban Sprawl</i></p> <p>It is an objective of the Council to prevent linear roadside frontage development on roads leading out of towns and villages in order to retain the identity of towns/villages, to prevent sprawl and to ensure a distinction in character between built up areas and the open countryside.</p> <p><i>Objective EH 09 Geological Sites</i></p> <p>It is an objective of the Council to:</p> <p>a) To protect from inappropriate development, the County Geological Sites contained in the Limerick Geological Heritage Survey 2021.</p> <p>b) Seek the conservation and protection of features of geological interest within Limerick, particularly those that would have been recognised in the past as Areas of Scientific Interest or by the Geological Survey of Ireland as being of particular value.</p> <p>c) Undertake a survey of such sites during the lifetime of the Plan.</p> <p><i>Objective IN 021 Hazardous Waste and Contaminated Sites</i></p> <p>It is an objective of the Council to:</p> <p>a) Implement the EPA's National Hazardous Waste Management Plan (NHWMP) 2014-2020 and any subsequent plans.</p> <p>b) Collaborate and seek guidance from the Environmental Protection Agency (EPA), the Health and Safety Authority (HAS), Health Service Executive (HSE) and Southern Region Waste Management Office, on the technical requirements for clearance and redevelopment of any contaminated lands when dealing with planning applications at these locations.</p>
Water	<ul style="list-style-type: none"> Potential adverse effects upon the status of water bodies and entries to the WFD Register of Protected Areas (ecological and human value), arising from changes in quality, flow and/or morphology. Increase in flood risk and associated effects associated with flood events. 	<p>Also refer to measures under other environmental components including Soil and Material Assets.</p> <p>Policy CH 2 Water Framework Directive Policy: It is a policy of the Council to:</p> <p>Implement changes to the management of water bodies, taking account of all aspects of the Water Cycle in accordance with the Water Framework Directive and the principal objective of the WFD to achieve at least good status in all waters and to ensure that status does not deteriorate in any waters.</p> <p>Objectives IU 05: Flood Risk Management: It is an objective of the Council to:</p> <p>a) Manage flood risk in accordance with the requirements of "The Planning System and Flood Risk Management Guidelines for Planning Authorities", DECLG and OPW (2009) and any revisions thereof and consider the potential impacts of climate change in the application of these guidelines.</p> <p>b) Ensure development proposals within the areas outlined as being at risk of flooding are subject to Site Specific Flood Risk Assessment as outlined in "The Planning System and Flood Risk Management Guidelines", DECLG and OPW (2009). These Flood Risk Assessments shall consider climate change impacts and adaptation measures including details of structural and non-structural flood risk management measures, such as</p>	<p>Also refer to measures under other environmental components including Soil and Material Assets.</p> <p><i>Objective EH 015 Ground Water, Surface Water Protection and River Basin Management Plans</i></p> <p>It is an objective of the Council to:</p> <p>a) Protect ground and surface water resources and to take into account the requirement of the Water Framework Directive when dealing with planning and land use issues.</p> <p>b) Implement the provisions of the River Basin Management Plan 2022-2028 and any succeeding plan. The filling of wetlands, surface water features and modifications and drainage of peatlands shall generally be prohibited.</p> <p>c) Implement the measures put forward in the Limerick Groundwater Protection Plan, in assessing planning applications and their consequences for ground</p> <p>d) The Blue Dot Catchments programme is a key action under the River Basin Management Plan for Ireland 2022-2028. The aim of the programme is to protect and restore high ecological status to a network of rivers and water bodies in Limerick. In Limerick, the following rivers and water bodies are Blue Dot Catchments Bleach Lough, the Ogeen River and the Behanagh River. The Council will take a precautionary approach to development which might affect water quality in these areas in line with requirements of the Water Framework Directive.</p> <p><i>Objective EH 017 Water Quality</i></p> <p>It is an objective of the Council to support commitments to achieve and maintain 'At Least Good' status, except where more stringent obligations are required. There shall be no deterioration of status for all water bodies under the Marine Strategy Framework Directive and its programme of measures, the Water Framework Directive and the River Basin Management Plan. Key challenges include, inter alia, the need to address significant deficits in urban waste-water treatment and water supply, addressing flooding and increased flood risks from extreme weather events and increased intense rainfall because of climate change.</p> <p><i>Policy EH P6 Water and Air Quality</i></p> <p>It is a policy of the Council to ensure that water and air quality shall be of the highest standard, to ensure the long term economic, social and environmental well-being of Limerick's resources. The World Health Organisation Air Quality Guidelines will be the basis for the air quality guidance in Limerick.</p>

SEA Statement for the Abbeyfeale Local Area Plan 2023-2029

Topic	Potentially Significant Adverse Effect, if Unmitigated	Local Area Plan measures, including:	Existing Limerick Development Plan 2022-2028 measures, including:
		<p>those relating to floor levels, internal layout, flood-resistant construction, flood-resilient construction, emergency response planning and access and egress during flood events.</p> <p>c) Ensure that future developments in flood prone areas is generally limited to minor developments in line with the Circular PL 02/2014 and the Flood Risk Management Guidelines for Planning Authorities and ensure future development of lands within Flood Risk Zone A/B is in accordance with the plan-making Justification Tests in the SFRA.</p> <p>d) Developments on lands benefitting from Arterial Drainage Schemes shall preserve the maintenance and access to these drainage channels. Land identified as benefitting from these systems may be prone to flooding, as such site-specific flood risk assessments will be required as appropriate, at planning application stage.</p> <p>e) Seek to upgrade the culvert serving the Glorach stream to minimise the risk of flooding, subject to resources.</p> <p>f) Ensure the protection of a 20m riparian buffer free from development, on greenfield lands, in particular the lands zoned New Residential by the Glórach stream east of the Clash Road and west of Cedarville.</p>	<p><i>Objective IN O10 Surface Water and SuDS</i></p> <p>It is an objective of the Council to:</p> <p>a) Ensure the separation of foul and surface water discharges in new developments through the provision of separate networks within application site boundaries.</p> <p>b) Work in conjunction with other public bodies towards a sustainable programme of improvement for riverbanks, back drains, etc.</p> <p>c) Maintain, improve and enhance the environmental and ecological quality of surface waters and groundwater, including reducing the discharges of pollutants or contaminants to waters, in accordance with the National River Basin Management Plan for Ireland 2018-2021 (DHPLG) and the associated Programme of Measures and any subsequent River Basin Management Plan.</p> <p>d) Ensure adequate storm water infrastructure to accommodate the planned levels of growth within the Plan area and to ensure that appropriate flood management measures are implemented to protect property and infrastructure.</p> <p>e) Cater for the future developments through public and private driven initiatives where discharge capacity permits.</p> <p>f) Address the issue of disposal of surface water generated by existing development in the area, through improvements to surface water infrastructure, including for example attenuation ponds, the application of sustainable urban drainage techniques, or by minimising the amount of hard surfaced areas, or providing porous surfaces as the opportunity arises.</p> <p>g) Protect the surface water resources of the Plan area and in individual planning applications request the provision of sediment and grease traps and pollution control measures where deemed necessary.</p> <p>h) Require all planning applications to include surface-water design calculations to establish the suitability of drainage between the site and the outfall point and require all new developments to include SuDS, to control surface water outfall and protect water quality in accordance with the requirements of Chapter 11: Development Management Standards of the Plan.</p> <p>i) Promote SuDS and grey water recycling in developments and responsible use of water by the wider community, to reduce the demand for water supply.</p> <p>j) Require SuDS schemes to be designed to incorporate the four pillars of water quality, water quantity, biodiversity and amenity to the greatest extent possible within the constraints of a given site.</p> <p>k) Allow sufficient land take for SuDS when planning the site and consider the region as a whole, in association with adjoining lands and their requirements in designing SuDS. Developers may be required to set aside lands to cater for not only their own SuDS but also regional SuDS.</p> <p>l) Promote the provision of suitable Blue/Green Infrastructure (BGI) and Nature Based Solutions to the surface water disposal in new development, as a means to provide urban flood resilience. This approach capitalises on the potential of urban green spaces and natural water flows, subject to the other planning considerations such as amenity, maintenance, traffic safety, proper planning and sustainable development and environmental requirements.</p> <p>m) <i>To prohibit the discharge of additional surface water to combined (foul and surface water) sewers in order to maximise the capacity of existing collection systems for foul water.</i></p> <p>n) <i>Encourage green roofs for the following types of development:</i></p> <ul style="list-style-type: none"> -Apartment developments; -Employment developments; -Retail developments; -Leisure facilities; -Education facilities. <p><i>Objective CAF O11 Nature Based Solutions</i></p> <p>It is an objective of the Council to promote integration and delivery of nature based solutions and infrastructure in new developments, including surface water management, public realm and community projects as a means of managing flood risk and enhancing the natural environment.</p> <p><i>Policy CAF P5 Managing Flood Risk</i></p> <p>It is a policy of the Council to protect Flood Zone A and Flood Zone B from inappropriate development and direct developments/land uses into the appropriate lands, in accordance with The Planning System and Flood Risk Management Guidelines for Planning Authorities 2009 (or any superseding document) and the guidance contained in Development Management Standards. Where a development/land use is proposed that is inappropriate within the Flood Zone, then the development proposal will need to be accompanied by a Development Management Justification Test and site specific Flood Risk Assessment in accordance with the criteria set out under The Planning System and Flood Risk Management Guidelines for Planning Authorities 2009 and Circular PL2/2014 (as updated/superseded). In Flood Zone C, the developer should satisfy themselves that the probability of flooding is appropriate to the development being proposed and should consider the implications of climate change.</p> <p><i>Objective CAF O20 Flood Risk Assessments</i></p> <p>It is an objective of the Council to require a Site-specific Flood Risk Assessment (FRA) for all planning applications in areas at risk of flooding (coastal/tidal, fluvial, pluvial or groundwater), where deemed necessary. The detail of these Site-specific FRAs (or</p>

SEA Statement for the Abbeyfeale Local Area Plan 2023-2029

Topic	Potentially Significant Adverse Effect, if Unmitigated	Local Area Plan measures, including:	Existing Limerick Development Plan 2022-2028 measures, including:
			<p>commensurate assessments of flood risk for minor developments) will depend on the level of risk and scale of development. A detailed Site-specific FRA should quantify the risks, the effects of selected mitigation and the management of any residual risks. The assessments shall consider and provide information on the implications of climate change with regard to flood risk in relevant locations.</p> <p><i>Objective CAF 021 Identified Flood Risk</i></p> <p>It is an objective of the Council to:</p> <p>a) Ensure that no development shall commence on the lands identified as being at flood risk adjacent to the Raheen Business Park in the townlands of Ballycummin/ Rootiagh, zoned for High Tech/ Manufacturing, until a Site-specific Flood Risk Assessment, including hydraulic model has been prepared for the lands, which demonstrates that the flood risk for the lands can be mitigated or that a less vulnerable use can be accommodated on site.</p> <p>b) Ensure that on the Enterprise and Employment lands located to the northwest of the M20/M7/N18 junction to the south of Toppin's field, that no encroachment onto, or loss of the flood plain occurs at this location and that only water compatible development should be permitted for the lands that are identified as being at risk of flooding.</p> <p>c) Ensure any planning application, including proposals for water compatible uses, on the lands in Flood Zones A and B adjacent to the Coonagh TUS campus, zoned for Education and Community, shall include a comprehensive Site-Specific Flood Risk Assessment, incorporating a drainage assessment for the lands, which demonstrates that the flood risk can be mitigated and that water compatible uses can be accommodated without adversely impacting on the flood risk of neighbouring residential properties.</p> <p>d) No works including the undertaking of ground level changes shall commence on the lands in the National Technology Park subject to flood risk, until all flood mitigation measures proposed on the site to facilitate future development of the IDA lands have been put in place. These measures shall form part of a project-specific flood risk assessment being completed as part of any planning application.</p> <p>e) Any planning application on the lands zoned Data Centre at Rosbrien shall include a comprehensive Site-Specific Flood Risk Assessment, which demonstrates that the flood risk can be mitigated and that access/egress, roads and water compatible uses can be accommodated without adversely impacting on the flood risk off site.</p> <p><i>Objective CAF 023 Flood Relief Schemes</i></p> <p>It is an objective of the Council to support and facilitate the development of Flood Relief Schemes as identified in the CFRAM 10 Year Investment Programme and ensure development proposals do not impede or prevent the progression of these measures.</p> <p><i>Objective CAF 024 Minor Flood and Mitigation Works and Coastal Protections Schemes</i></p> <p>It is an objective of the Council to support and facilitate the Office of Public Works Minor Flood and Mitigation Works and Coastal Protections Schemes and ensure development proposals do not impede or prevent the progression of these measures.</p> <p><i>Objective CAF 025 Strategic Flood Risk Assessment</i></p> <p>It is an objective of the Council to have regard to the recommendations set out in the Strategic Flood Risk Assessment prepared to support the Plan.</p> <p><i>Development Management Standards, including under 11.3.8 "Landscaping", 11.3.11 SuDS (Sustainable Drainage Systems)</i></p>
Air and Climatic Factors	<ul style="list-style-type: none"> Potential conflict between development under the Plan and aiming to reduce carbon emissions in line with local, national and European environmental objectives. Potential conflicts between transport emissions, including those from cars, and air quality. Potential conflicts between increased frequency of noise emissions and protection of sensitive 	<p>Also refer to the overall approach to land use zoning and sustainable mobility provided by the Plan.</p> <p>Policy TCF P2: Town Centre First and '10 Minute' Town Concept - It is policy of the Council to:</p> <p>a) Implement the 10 Minute Town Concept in Abbeyfeale ensuring that future development including residential, community and educational facilities, employment centres are within a 10-minute walk or cycle from the town centre and/or accessible by public transport services connecting to settlements, including Limerick City, North Kerry, West Limerick and North Cork.</p> <p>b) Prioritise the town centre as the most appropriate location for future development of the town. Planning applications for future development will be assessment as per the zoning objectives of this Plan and considered sequentially in relation to the town centre zoning.</p> <p>Policy SMT P1: Integration of Land Use and Transport Policies - It is a policy of the Council to Support and facilitate the integration of land use and transportation policies for Abbeyfeale, as a means of reducing</p>	<p>Also refer to the overall approach to land use zoning and sustainable mobility provided by the Plan.</p> <p><i>Objective IN 01 Climate Action in Infrastructure Planning</i></p> <p>It is an objective of the Council to:</p> <p>a) Require all infrastructure development, whether above ground or subterranean, to avoid flood risk areas and areas at risk of coastal erosion.</p> <p>b) Require site selection, location, design and materials to have regard to and be resilient to the changing climate (high winds, temperature fluctuations, increased storm intensity and changes in rainfall).</p> <p>c) Collaborate with utility and service providers to ensure their networks are resilient to the impacts of climate change, both in terms of design and ongoing maintenance.</p> <p><i>Policy EH P3 Climate Action and the Natural Environment</i></p> <p>It is a policy of the Council to take into account the contents of the National Biodiversity Action Plan and the Biodiversity Climate Adaptation Plan and any forthcoming guidance or legislation on climate action, whether adaptation or mitigation that will emerge during the course of the Plan.</p> <p>Air Quality and Noise</p> <p><i>Objective EH 025 Air Pollution</i></p> <p>It is an objective of the Council to implement the provisions of national and EU Directives on air pollution and other relevant legislative requirements in conjunction with other agencies as appropriate.</p> <p><i>Objective EH 026 Improvement of Air Quality</i></p> <p>It is an objective of the Council to improve air quality and help prevent people being exposed to unacceptable levels of pollution in Limerick, through the support of sustainable modes of transport, renewable energy, promotion of energy efficient buildings and</p>

SEA Statement for the Abbeyfeale Local Area Plan 2023-2029

Topic	Potentially Significant Adverse Effect, if Unmitigated	Local Area Plan measures, including:	Existing Limerick Development Plan 2022-2028 measures, including:
	<p>receptors.</p> <ul style="list-style-type: none"> Potential conflicts with climate adaptation measures including those relating to flood risk management. 	<p>the impact on climate change. The Council will ensure the delivery of a sustainable compact settlement, which can be served by various modes of transport with a focus on reducing the need to travel.</p> <p>Policy SMT P2: Transport and Movement - Promotion of Sustainable Patterns of Transport Use: It is a policy of the Council to</p> <p>Seek to implement in a positive manner, in cooperation with other relevant stakeholders and agencies, the policies of the NPF, RSES, the National Sustainable Mobility Policy (2022) and the National Sustainable Mobility Policy (2022) and the Department of Transport's Active Travel publications, to encourage more sustainable patterns of travel and greater use of sustainable forms of transport in Abbeyfeale, including public transport, cycling and walking.</p> <p>Objective SM 02: Modal Shift and Behavioural Change: It is an objective of the Council to:</p> <p>a) Encourage, promote and facilitate a modal shift towards more sustainable forms of transport in Abbeyfeale, including the Limerick Greenway.</p> <p>b) Support and facilitate implementation of an integrated, multi-modal and accessible public transport network for Abbeyfeale and its hinterland.</p> <p>Policy CH 1: Climate Change: It is a policy of the Council to Protect and enhance environmental quality and implement the climate action measures through the planning process to help address climate change.</p> <p>Objective CH 01: Climate Change: It is an objective of the Council to:</p> <p>a) Ensure climate-proofing measures are incorporated into the design, planning and construction of all developments, including utilities and their networks. The use of green infrastructure as a mechanism for carbon offsetting and surface water management is encouraged.</p> <p>b) Ensure that all residential and commercial developments are designed to take account of the impacts of climate change, including the installation of rainwater harvesting systems, and that energy efficiency and renewable energy measures are incorporated. In the case of large industrial, commercial or newly constructed public buildings, the incorporation of renewable technologies, such as solar energy in the design will be encouraged, subject to compliance with all relevant planning criteria.</p> <p>c) Support and promote climate smart and the NZEB standard of building or equivalent for all new developments.</p> <p>d) Promote and support development of renewable energy sources, which will achieve low carbon outputs and promote Abbeyfeale as a low carbon area.</p> <p>e) Support the development of low carbon and green technological businesses and industries.</p> <p>f) Promote responsible development and management of land, drainage systems and natural habitats and encourage development at appropriate locations, which minimise the use of fossil fuels and maximises the use of local or renewable resources.</p>	<p>homes and urban greening.</p> <p><i>Objective EH 027 Air Quality Monitoring</i></p> <p>It is an objective of the Council to monitor and provide access to the public on the air quality in Limerick and support the EPA in the expansion and management of the national air quality monitoring network.</p> <p><i>Objective EH 028 Air Quality during Construction</i></p> <p>It is an objective of the Council to protect environmental quality and implement site appropriate mitigation measures during construction and demolition phases of a development, with respect to air quality, including dust.</p> <p><i>Objective EH 029 Odour</i></p> <p>It is an objective of the Council to protect the public from odour nuisance issues through odour abatement solutions.</p> <p><i>Policy EH P7 Environmental Noise</i></p> <p>It is a policy of the Council to proactively manage environmental noise, where it may have a significant adverse impact on the health and quality of life of communities in Limerick and to support the aims of the Environmental Noise Regulations, through the development and implementation of Noise Action Plans.</p> <p><i>Objective EH 020 Noise and Vibration during Construction and at Open Sites</i></p> <p>It is an objective of the Council to protect the quality of the environment against the effects of noise and vibration, by implementing site appropriate mitigation measures during the construction and demolition phases of development.</p> <p><i>Policy EH P6 Water and Air Quality</i></p> <p>It is a policy of the Council to ensure that water and air quality shall be of the highest standard, to ensure the long term economic, social and environmental well-being of Limerick's resources. The World Health Organisation Air Quality Guidelines will be the basis for the air quality guidance in Limerick.</p> <p><i>Objective TR 053 Noise and Transportation</i></p> <p>It is an objective of the Council to identify appropriate mitigation measures to reduce noise levels from traffic where they are potentially harmful, in accordance with Limerick's Noise Action Plan.</p> <p><i>Objective TR 054 Noise Sensitive Development</i></p> <p>It is an objective of the Council to require noise sensitive developments in close proximity to heavily trafficked roads to be designed and constructed to minimise noise disturbance, follow a good acoustic design process and clearly demonstrate that significant adverse noise impacts will be avoided in accordance with Professional Practice Guidance on Planning and Noise (2017) and based on the guidance and recommendations of the World Health Organisation.</p> <p>Sustainable Mobility and Transport</p> <p><i>Policy TR P3 Integration of Land Use and Transport Policies</i></p> <p>It is a policy of the Council to support and facilitate the integration of land use and transportation policies, to ensure the delivery of sustainable compact settlements, which are served by sustainable modes of transport.</p> <p><i>Policy TR P4 Promotion of Sustainable Patterns of Transport Use</i></p> <p>It is a policy of the Council to seek to implement in a positive manner, in cooperation with other relevant authorities and agencies, the policies of the NPF, RSES and the Department of Transport's Smarter Travel, A Sustainable Transport Future 2009 – 2020 (and any subsequent updates), to encourage more sustainable patterns of travel and greater use of sustainable forms of transport, including public transport, cycling and walking.</p> <p><i>Policy TR P5 Sustainable Mobility and Regional Accessibility</i></p> <p>It is a policy of the Council to support sustainable mobility, enhanced regional accessibility and connectivity within Limerick, in accordance with the National Strategic Outcomes of the National Planning Framework and the Regional Spatial and Economic Strategy for the Southern Region.</p> <p><i>Policy TR P6 Sustainable Travel and Transport</i></p> <p>It is a policy of the Council to support, facilitate and co-operate with relevant agencies to secure sustainable travel within Limerick and seek to implement the 10 minute city/town concept, promote compact growth and reduce the need for long distance travel, as a means to reduce the impact of climate change.</p> <p><i>Objective TR 01 Climate Proofed Transport Infrastructure</i></p> <p>It is an objective of the Council to ensure that all future and retrofitted transport infrastructure is climate proofed, through design and construction, to function in a climate altered future and would, where possible, be multifunctional e.g. provide accessible routes for other services such as fibre optics or water, energy connections or other services and technologies that might come about during the lifetime of the infrastructure.</p> <p><i>Objective TR 03 Delivery and Servicing Strategy</i></p> <p>It is an objective of the Council to:</p> <p>a) Reduce the amount of 'last mile trips' being made by motorised vehicles;</p> <p>b) Facilitate the transition to zero emission delivery vehicles such as cargo bikes, solar powered and electric vehicles; and</p>

SEA Statement for the Abbeyfeale Local Area Plan 2023-2029

Topic	Potentially Significant Adverse Effect, if Unmitigated	Local Area Plan measures, including:	Existing Limerick Development Plan 2022-2028 measures, including:
		<p>g) Promote the appropriate adaption of built heritage to respond to the effects of climate change.</p> <p>h) Protect and enhance environmental quality and implement current and future climate action measures and guidance that may be published during the life time of the plan through the planning process to help address climate change.</p> <p>Objective SM 01: Movement and Accessibility: It is an objective of the Council to</p> <p>a) Enhance the walking and cycling networks through the town within the lifetime of the Plan and seek to improve direct pedestrian linkages, cycle networks and infrastructure throughout the town and improve connectivity to the town centre and existing services.</p> <p>b) Deliver the Traffic Management Scheme for the town within the lifetime of the Plan. High quality public realm will be required as part of any town centre redevelopment.</p> <p>c) Facilitate school zone measures, including slow zones around the schools, and promote/facilitate active travel options for students to reduce the health and safety risks associated with traffic congestion, pollution and inactive lifestyles.</p> <p>d) Incorporate Sustainable Travel measures in all new developments in the town.</p> <p>e) Support the progression of the N21 Abbeyfeale Road Scheme (as already provided by the Limerick Development Plan 2022- 2028, including Objective TR 031), and associated linkage into the town centre, to provide improved regional connectivity and ensure future development proposals do not compromise the development of this scheme.</p> <p>f) Support the progression of enhancing connectivity between the Limerick Greenway and the town centre by safe walkway/cycleway route, subject to the necessary environmental assessments.</p> <p>g) Deliver a footpath on the Clash Road to connect existing and proposed development to the town centre.</p> <p>h) Protect the capacity of the national and regional road network from inappropriate development, having regard to all relevant Government guidance, Objective TR 039 National Roads and Objective TR 041 Strategic Regional Roads of the Limerick Development Plan 2022-2028 and ensure development does not compromise the performance of the network or future improvements to the network. Road Safety Audits and Traffic Impact Assessments will be required to demonstrate implications of development proposals on the national and regional road network.</p> <p>i) Restrict advertising signage adjacent to the national road networks, in accordance with Section 3.8 of the Spatial Planning and National Roads Guidelines, 2012 and any subsequent replacement.</p> <p>j) Ensure all developments protect and safeguard the capacity and efficiency of the drainage regimes of the regional and local network.</p> <p>k) Support the provisions set out in the 2020 DMURS Interim Advice Note – Covid-19 Pandemic Response.</p> <p>l) Support infrastructure projects that are not already</p>	<p>c) Support local 'Click and Collect' facilities where appropriate to minimise trips to individual homes and workplaces.</p> <p><i>Objective TR 04 Universal Design</i> It is an objective of the Council to ensure that all transport schemes incorporate high-quality urban realm design that is attractive, safe, comfortable and accessible for all individuals.</p> <p><i>Objective TR 06 Delivering Modal Split</i> It is an objective of the Council to:</p> <p>a) Promote a modal shift away from the private car towards more sustainable modes of transport including walking, cycling, carpool and public transport in conjunction with the relevant transport authorities;</p> <p>b) Support investment in sustainable transport infrastructure that will make walking, cycling, carpool and public transport more attractive, appealing and accessible for all.</p> <p><i>Objective TR 08 Walking and Cycling Infrastructure</i> It is an objective of the Council to:</p> <p>a) Improve and provide clear, safe and direct pedestrian linkages, cycle networks, including the greenways and primary segregated cycle routes, between the employment zones, shopping areas and residential areas throughout Limerick;</p> <p>b) Maintain and expand the pedestrian route network, infrastructure and where possible retrofit cycle and pedestrian routes into the existing urban road network, to provide for accessible safe pedestrian routes within Limerick.</p> <p><i>Objective TR 09 Limerick Cycle Network</i> It is an objective of the Council to implement in full, the Cycle Network, which will be set out in the final LSMATS, with priority given in the short term to delivering the primary cycle network and cycle routes serving schools.</p> <p><i>Objective TR 010 Limerick Regeneration Areas Sustainable Travel Infrastructure</i> It is an objective of the Council to support LSMATS in the identification and delivery of improvements to walking/cycling infrastructure and improvements to public transport, based on those measures identified in the Limerick Regeneration Framework Implementation Plan.</p> <p><i>Objective TR 011 Enhanced Public Transport</i> It is an objective of the Council to support and encourage public transport providers to enhance the provision of public transportation and frequency of services in Limerick, including the provision of enhanced accessibility from the City Centre to Shannon Airport.</p> <p><i>Objective TR 015 Transport Interchange</i> It is an objective of the Council to facilitate the provision of quality transport interchanges, in order to facilitate focussed access to multiple public transport modes and to maximise the movement of people via sustainable modes.</p> <p><i>Objective TR 016 Rail Network</i> a) Explore a pathway to rail-based development in the review of the RSES and MASP in conjunction with the National Transport Authority and the Southern and Western Regional Assemblies;</p> <p>b) Support and facilitate new and upgrading of existing rail networks, railway stations and services across Limerick as identified in LSMATS and protect, as required, lands necessary for the upgrading of existing railway lines or stations, which would improve journey times and enable an increase in the frequency of services and connections.</p> <p><i>Objective TR 017 Electric Vehicles</i> It is an objective of the Council to:</p> <p>a) Encourage the switch to Electric Vehicles and e-bikes through the roll-out of additional electric charging points at appropriate locations, throughout Limerick, in association with relevant agencies and stakeholders;</p> <p>b) Facilitate the provision of electricity charging infrastructure for electric vehicles, both on street and in new developments, in accordance with the Development Management Standards set out in Chapter 11.</p> <p><i>Objective TR 023 Mobility Management</i> It is an objective of the Council to require the submission of Mobility Management Plans, subject to the guidance provided in the Toolkit for School Travel, Safe Routes to School Programme, Workplace Travel Plans – A Guide for Implementers and Achieving Effective Workplace Travel Plans – Guidance for Local Authorities, for any development that the Council consider will have significant trip generation and attraction rates, at peak hours or throughout the day and where existing or proposed public transport may be utilised.</p> <p>Climate Action and Transition to Low Carbon Economy <i>Policy CAF P1 Climate Action Policy</i> It is a policy of the Council to implement international and national objectives, to support Limerick's transition to a low carbon economy and support the climate action policies included in the Plan.</p> <p><i>Objective CAF 01 Compliance with Higher Tier Climate Legislation and Guidance</i> It is an objective of the Council to support the National Adaptation Framework 2018 and the National Climate Change Strategy, including the transition to a low carbon future, taking account of flood risk, the promotion of sustainable transport, soil conservation,</p>

SEA Statement for the Abbeyfeale Local Area Plan 2023-2029

Topic	Potentially Significant Adverse Effect, if Unmitigated	Local Area Plan measures, including:	Existing Limerick Development Plan 2022-2028 measures, including:
		<p>permitted or provided for by existing plans/programmes, shall be subject to the undertaking of feasibility assessment, taking into account planning need and the policies and objectives of the Plan relating to sustainable mobility. Where feasibility is established, a Corridor and Route Selection Process will be undertaken, where relevant appropriate, in two stages: Stage 1 – Route Corridor Identification, Evaluation and Selection; and Stage 2 – Route Identification, Evaluation and Selection. New transport infrastructure will be considered subject to environmental constraints as identified in the SEA Environmental Report, including those related to habitats and potential impacts (e.g. disturbance from lighting). This will include minimising river crossings, avoiding sensitive habitats, not increasing barriers to flood waters and sustainable design and construction techniques.</p>	<p>the importance of green infrastructure, improved air quality, the use of renewable resources and the re-use of existing resources. Support the implementation of the Limerick Climate Change Adaptation Strategy (2019) and any revised or forthcoming adaptation, mitigation or climate action strategies or plans at local, regional and national level in the formulation of any plans or policies.</p> <p><i>Objective CAF 02 Partnership with Service Providers</i> It is an objective of the Council to work in partnership with existing service providers to facilitate required enhancement and upgrading of existing infrastructure and networks (subject to appropriate environmental assessment and the planning process) while cognisance shall be had to support the safeguarding of strategic energy corridors from encroachment by other developments, that could compromise the delivery of energy networks.</p> <p><i>Objective CAF 03 Sustainable Development</i> It is an objective of the Council to support sustainable travel, energy efficient projects, provision of green spaces and open space and sustainable residential development projects, as a means of addressing climate change.</p> <p><i>Objective CAF 04 Climate Proofing</i> It is an objective of the Council to ensure climate proofing measures are incorporated into the design, planning, layout and orientation and construction of all developments, including the use of sustainable materials, selection of suitable locations and the use of renewable energy sources.</p> <p><i>Objective CAF 05 Energy Efficiency in Existing Development</i> It is an objective of the Council to support the retrofitting of existing buildings over their demolition and the integration of renewables into existing buildings, thereby ensuring a fabric first approach is taken.</p> <p><i>Objective CAF 06 Energy Efficiency in New Developments</i> It is an objective of the Council to ensure that all developments are designed to take account of the impacts of climate change. This will include the installation of rainwater harvesting systems, sustainable urban drainage systems and nature based solutions for water management. Energy efficiency and renewable energy measures should be incorporated, in the cases of large industrial, commercial or newly constructed public buildings. The incorporation of renewable technologies, such as solar energy in the design will be encouraged, subject to compliance with all relevant planning criteria.</p> <p><i>Objective CAF 07 Near Zero Energy Buildings</i> It is an objective of the Council to support and promote climate smart and the Near Zero Energy Building (NZEB) standard of building, or equivalent, for all new developments.</p> <p><i>Objective CAF 08 Renewable Energy Objective</i> It is an objective of the Council to promote and support development of renewable energy sources, which will achieve low carbon outputs including on-land and off-shore renewable energy production, which support tidal turbine, PV, community energy companies and battery technology, subject to adequate environmental and ecological protection.</p> <p><i>Objective CAF 09 Achieving Climate Resilience</i> It is an objective of the Council to promote climate resilience in development and economic activities that are regulated by planning. It is important to ensure that any developments are climate resilient as they will need to function in a climate altered environment. This means that they will be able to withstand increased intensity of storm events and rainfall and through adequate design, location and drainage elements, would not contribute to problems elsewhere, such as increased run off.</p> <p><i>Objective CAF 012 Urban Greening</i> It is an objective of the Council to support urban greening and planting initiatives across the city, towns and villages.</p> <p><i>Policy CAF P2 Transition to a Low Carbon Economy</i> It is a policy of the Council to support the transition to a low carbon climate resilient economy, by way of reducing greenhouse gases, increasing renewable energy and improving energy efficiency and will future proof policies and objectives to deliver on this approach, in so far as possible.</p> <p><i>Policy CAF P3 Promote Awareness and Behavioural Change</i> It is a policy of the Council to promote awareness and support behavioural change in relation to climate change and transition to a low carbon economy.</p> <p><i>Policy CAF P4 Co-operation with Relevant Stakeholders</i> It is a policy of the Council to cooperate with the Climate Action Regional Office (CARO) and other relevant stakeholders, in respect of adaptation and mitigation of greenhouse gas emissions and future climate change adaptation strategies.</p> <p><i>Objective CAF 014 Energy Generation</i> It is an objective of the Council to support the local production of renewable energy and connection to gas network. Where electricity is being generated locally, the Council will support the provision of infrastructure for its transmission to the grid, subject to it fulfilling technical and environmental requirements.</p> <p><i>Objective CAF 015 Local Energy Production</i> It is an objective of the Council to support localised renewable and carbon friendly means of heating and energy provision, including</p>

SEA Statement for the Abbeyfeale Local Area Plan 2023-2029

Topic	Potentially Significant Adverse Effect, if Unmitigated	Local Area Plan measures, including:	Existing Limerick Development Plan 2022-2028 measures, including:
			<p>district heating systems. New technologies such as air to water and geothermal may have a role to play in this regard.</p> <p><i>Objective CAF 016 Circular Economy</i> It is an objective of the Council to encourage the adoption of the circular economy through promotion of the reuse, recycling and reduction of the use of raw materials and resources.</p> <p><i>Objective CAF 017 Low Energy Building Materials</i> It is an objective of the Council to encourage the use of low energy building materials and design in all developments.</p> <p><i>Objective TLC 018 Energy and Emissions Balance</i> It is an objective of the Council to support the Energy and Emissions Balance Report and updates of the report as they are prepared. The Council will also support the preparation of a Local Authority Climate Action Plan as outlined in the report.</p> <p><i>Objective CAF 019 Decarbonising Zones</i> It is an objective of the Council to support the identification of a Decarbonising Zone by designating a spatial area, in which a range of climate mitigation, adaptation and biodiversity measures and action owners are identified, to address local low carbon energy, greenhouse gas emissions and climate needs, to contribute to national climate action targets and work with statutory agencies and stakeholders as appropriate.</p> <p><i>Objective CAF 022 Cooperation with Other Agencies</i> It is an objective of the Council to work with other bodies and organisations, as appropriate, to help protect critical infrastructure, including water and wastewater, within Limerick, from risk of flooding. Any subsequent plans shall consider, as appropriate any new and/or emerging data, including, when available, any relevant information contained in the CFRAM Flood Risk Management Plans and as recommended in the SFRA for the Plan.</p> <p><i>Policy CAF P6 Renewable Energy</i> It is a policy of the Council to support renewable energy commitments outlined in national and regional policy, by facilitating the development and exploitation of a range of renewable energy sources at suitable locations throughout Limerick, where such development does not have a negative impact on the surrounding environment landscape, biodiversity, water quality or local amenities, to ensure the long term sustainable growth of Limerick.</p> <p><i>Policy CAF P7 Atlantic Green Digital Basin (GDB)</i> It is a policy of the Council to support the development of Atlantic Green Digital Basin (GDB) proposals within Limerick and the wider region, subject to appropriate levels of environmental assessment and planning considerations and to work with relevant stakeholders to realise its potential.</p> <p><i>Policy CAF P8 Community Based Renewable Energy</i> It is a policy of the Council to support the development of community based renewable energy projects, subject to appropriate levels of environmental assessment and planning considerations.</p> <p><i>Policy CAF P9 Renewable Energy Technologies</i> It is a policy of the Council to consider all emerging renewable energy technologies, such as hydrogen electrolysis, pumped storage and small scale anaerobic digestion and any other source of renewable energy technologies that are viable as a means of energy security, subject to the relevant level of necessary environment and ecological assessments.</p> <p><i>Objective CAF 026 Bio Energy</i> It is an objective of the Council to support the development of bio energy and projects in suitable locations and subject to adequate assessment. The development of grid injection, where this is necessary for renewable energy input will also be supported.</p> <p><i>Objective CAF 027 Renewable Energy Production</i> It is an objective of the Council to encourage and facilitate the production of energy from renewable sources, such as from bioenergy, solar, hydro, tidal, geothermal and wind energy, subject to appropriate levels of environmental assessment and planning considerations.</p> <p><i>Objective CAF 028 Assessment of Renewable Energy Projects</i> It is an objective of the Council to encourage the development of wind energy, in accordance with Government policy and having regard to the principles and planning guidance set out in the Department of Housing, Planning and Local Government publications relating to Wind Energy Development and the DCCAE Code of Practice for Wind Energy Development in Ireland and any other relevant guidance, which may be issued in relation to sustainable energy provisions during the course of the Plan.</p> <p><i>Objective CAF 035 Community Based Energy Initiatives</i> It is an objective of the Council to support community energy-based initiatives, subject to adequate assessment, to help achieve low carbon communities.</p> <p><i>Objective CAF 036 Geothermal Energy</i> It is an objective of the Council to facilitate geothermal energy generating developments, both standalone and in conjunction with other renewable energy projects in suitable locations.</p> <p><i>Objective CAF 040 Community Renewable Energy</i> It is an objective of the Council to support and strengthen sustainable local/community renewable energy networks, micro renewable</p>

SEA Statement for the Abbeyfeale Local Area Plan 2023-2029

Topic	Potentially Significant Adverse Effect, if Unmitigated	Local Area Plan measures, including:	Existing Limerick Development Plan 2022-2028 measures, including:
			generation, climate smart countryside projects and connections from such initiatives to the grid. The potential for sustainable local/community energy projects and micro generation to both mitigate climate change and to provide for local fuel need is also supported. <i>Development Management Standards</i> , including under 11.7 "Climate Action"
Material Assets	<ul style="list-style-type: none"> Failure to provide adequate and appropriate waste water treatment (water services infrastructure and capacity ensures the mitigation of potential conflicts). Failure to adequately treat surface water run-off that is discharged to water bodies (water services infrastructure and capacity ensures the mitigation of potential conflicts). Failure to comply with drinking water regulations and serve new development with adequate drinking water (water services infrastructure and capacity ensures the mitigation of potential conflicts). Increases in waste levels. Potential impacts upon public assets and infrastructure. Interactions between agricultural waste and soil, water, biodiversity and human health – including as a result of emissions of ammonia from agricultural activities (e.g. manure handling, storage and spreading) and the production of secondary inorganic particulate matter. 	<p>Also refer to measures under other environmental components including Population and Human Health, Cultural Heritage, Soil, Water, Air, various Land Use provisions.</p> <p>Policy IU P1: Infrastructure and Utilities: It is the policy of the Council to:</p> <p>Ensure the provision of adequate infrastructure capacity to accommodate future development and the timely provision of infrastructure needed for the sustainable growth of Abbeyfeale.</p> <p>Objective IU 01: Water Supply Infrastructure: It is an objective of the Council to:</p> <p>a) Ensure compliance for infrastructure led-growth in accordance with the DHPLG Water Services Guidelines for Planning Authorities.</p> <p>b) Facilitate improvements to the existing water supply system to cater for the needs of an expanding population.</p> <p>c) Ensure that development proposals provide adequate water infrastructure to facilitate proposed developments. Evidence of consultation by developers with Uisce Éireann prior to submitting planning applications will be required.</p> <p>d) Ensures future development protects existing wayleave and buffer zones around public water services infrastructure.</p> <p>e) Promote water conservation and demand management measures among all water users, and to support Uisce Éireann in implementing water conservation measures such as leakage reduction and network improvements, including innovative solutions in specific situations.</p> <p>f) Proposals for abstractions of water will be subject to the appropriate environmental assessments and demonstrate compliance with the requirements of Article 6 of the Habitats Directive and the Water Framework Directive.</p> <p>Objective IU 02: Wastewater Infrastructure: It is an objective of the Council to:</p> <p>a) Support the implementation of the Uisce Éireann Investment Plans, in accordance with the settlement strategy of the RSES and Development Plan.</p> <p>b) Ensure adequate wastewater infrastructure is available to cater for existing and proposed development, in collaboration with Uisce Éireann, avoiding any deterioration in the quality of receiving waters and ensuring discharge meets the requirements of the Water Framework Directive. This includes the separation of foul and surface water through the provision of separate networks and nature-based rainwater management measures. Applications for development under the Plan must demonstrate that the proposal for development would not adversely affect a water body's ability to meet its objectives under the Water Framework Directive, individually as a result of the proposed development or cumulatively, in combination with other developments. Evidence of consultation by developers with Uisce Éireann, prior to</p>	<p>Also refer to measures under other environmental components including Population and Human Health, Cultural Heritage, Soil, Water, Air, various Land Use provisions.</p> <p><i>Policy IN P1 Strategic Infrastructure</i></p> <p>It is a policy of the Council to:</p> <p>a) Secure investment in the necessary infrastructure (including digital technology, ICT, telecommunications networks, water services, surface water management, waste management, energy networks), which will allow Limerick to grow and realise its full potential.</p> <p>b) Fulfil Limerick's ambition as a contemporary City and County in which to live, work, invest and visit, with supporting infrastructure, whilst complying with the relevant EU Directives and national legislation, including the protection of the environment.</p> <p>Blue/Green Infrastructure</p> <p><i>Objective EH 012 Blue Green Infrastructure</i></p> <p>It is an objective of the Council to:</p> <p>a) Promote a network of Green and Blue infrastructure throughout Limerick.</p> <p>b) Promote connecting corridors for the movement of species and encourage the retention and creation of features of biodiversity value, ecological corridors and networks that connect areas of high conservation value such as woodlands, hedgerows, earth banks, watercourses, wetlands and designated sites. In this regard, new infrastructural projects and linear developments in particular, will have to demonstrate at design stage, sufficient measures to assist in the conservation of and dispersal of species. Projects which would be detrimental to existing Blue – Green Infrastructure features will not be permitted.</p> <p>c) Ensure the integration and strengthening of green infrastructure into the preparation of Local Area Plans.</p> <p>d) Where possible remove barriers to species movement, such as the removal of in-stream barriers to fish passage for example.</p> <p><i>Objective EH 013 Blue Green Infrastructure Strategy</i></p> <p>It is an objective of the Council to prepare and implement a Green and Blue Infrastructure Strategy for Limerick City and Environs.</p> <p>e) Seek to advance the use of an ecosystem services approach and ecosystem services valuation as a decision-making tool in plans and projects, subject to appropriate ecological assessment.</p> <p>Water Services</p> <p><i>Objective IN 05 Water Services</i></p> <p>It is an objective of the Council to:</p> <p>a) Support Irish Water in the provision of water and wastewater infrastructure and services in accordance with the Service Level Agreement, until such time as the Agreement is terminated.</p> <p>b) Collaborate with Irish Water in the protection of water supply sources to avoid water quality deterioration and reduce the level of treatment required in the production of drinking water, in accordance with Article 7(2) of the WFD. Protection and restoration of drinking water at the source can have co-benefits for biodiversity and climate change.</p> <p>c) Liaise with Irish Water during the lifetime of the Plan to secure investment in the pro-vision, extension and upgrading of the piped water distribution network and wastewater pipe network across Limerick City and County, to serve existing population and future population growth and sustain economic growth, in accordance with the requirements of the Core and Settlement Strategies.</p> <p>d) Collaborate with Irish Water to resolve the existing water services infrastructural constraints in Newcastle West – a Key Town designated by the RSES.</p> <p>e) Ensure that development proposals connecting to the public water and/or wastewater networks comply with Irish Water Standard Details and Codes of Practice. Where relevant ensure developments comply with the EPA Code of Practice for Domestic Waste Water Treatment Systems 2021.</p> <p>f) Require future developments to connect to public water services and wastewater if available to the site. Combined water and wastewater systems will not be permitted. Consent to connect to Irish Water assets will be requested as part of the planning application process.</p> <p>g) Have regard to Section 28 Guidelines – Draft Water Services Guidelines for Planning Authorities, DHPLG, 2018 and any subsequent guidelines when carrying out the forward planning and development management functions of the Planning Authority.</p> <p><i>Objective IN 06 Drinking Water Source Protection</i></p> <p>It is an objective of the Council to protect both ground and surface water sources, to avoid water quality deterioration and reduce the level of treatment required in the production of drinking water, in accordance with Article 7(2) of the Water Framework Directive.</p> <p>i. New developments which could pose an unacceptable risk to drinking water sources will not be permitted.</p> <p>ii. New development should not conflict with the protection guidelines set out in the Limerick Groundwater Protection Scheme and/ or</p>

SEA Statement for the Abbeyfeale Local Area Plan 2023-2029

Topic	Potentially Significant Adverse Effect, if Unmitigated	Local Area Plan measures, including:	Existing Limerick Development Plan 2022-2028 measures, including:
		<p>submitting a planning application will be required.</p> <p>(c) Ensure compliance for infrastructure led-growth in accordance with the DHPLG Water Services Guidelines for Planning Authorities.</p> <p>(d) Facilitate improvements to the existing wastewater system to cater for the needs of an expanding population.</p> <p>(e) Ensure future development protects existing wayleave and buffer zones around public water services infrastructure.</p> <p>Objective IU 04: Surface Water Management and SUDS: It is an objective of the Council to:</p> <p>a) Maintain, improve and enhance the environmental and ecological quality of surface waters and groundwater, including reducing the discharges of pollutants or contaminants to waters in accordance with the Draft River Basin Management Plan for Ireland 2022-2027 (DHPLG) and associated Programme of Measures.</p> <p>b) Require all planning applications to include surface water design calculations to establish the suitability of drainage between the site and the outfall point.</p> <p>c) Require all new developments to include Sustainable Urban Drainage Systems (SuDS) to control surface water outfall and protect water quality.</p> <p>a) Require applicants to investigate the potential for the provision of porous surfaces, where car parking and hard landscaping is proposed.</p> <p>b) Protect the surface water resources of the plan area and in individual planning applications request the provision of sediment and grease traps, and pollution control measures, where deemed necessary.</p> <p>Objectives IU 07: Waste Management: It is an objective of the Council to:</p> <p>a) Support the Regional Waste Management Office in implementation of the Regional Waste Management Plan and the EU Action Plan for the Circular Economy – Closing the Loop, to ensure sustainable patterns of consumption and production.</p> <p>b) Require all commercial and residential development to provide an adequate internal and external space for the correct storage of waste and recyclable materials.</p>	<p>Groundwater Source Protection Zone reports.</p> <p><i>Objective IN 08 Public Waste Water</i></p> <p>It is an objective of the Council to:</p> <p>a) Ensure adequate and appropriate wastewater infrastructure is available to cater for existing and proposed development, in collaboration with Irish Water, to avoid any deterioration in the quality of receiving waters and to ensure that discharge meets the requirements of the Water Framework Directive.</p> <p>b) Require all new developments to connect to public wastewater infrastructure, where available and to encourage existing developments that are in close proximity to a public sewer to connect to that sewer.</p> <p>These will be subject to a connection agreement with Irish Water and evidence of this agreement will be required as part of any planning application.</p> <p>c) Require all new development to provide separate foul and surface water drainage systems, to maximise the capacity of existing collection systems for foul water.</p> <p>d) Apply a presumption against any development that requires the provision of private wastewater treatment facilities (i.e. Developer Provided Infrastructure) other than single house systems and in very exceptional circumstances.</p> <p><i>Objective IN 010 Surface Water and SuDS</i> It is an objective of the Council to:</p> <p>a) Ensure the separation of foul and surface water discharges in new developments through the provision of separate networks within application site boundaries.</p> <p>b) Work in conjunction with other public bodies towards a sustainable programme of improvement for riverbanks, back drains, etc.</p> <p>c) Maintain, improve and enhance the environmental and ecological quality of surface waters and groundwater, including reducing the discharges of pollutants or contaminants to waters, in accordance with the National River Basin Management Plan for Ireland 2018-2021 (DHPLG) and the associated Programme of Measures and any subsequent River Basin Management Plan.</p> <p>d) Ensure adequate storm water infrastructure to accommodate the planned levels of growth within the Plan area and to ensure that appropriate flood management measures are implemented to protect property and infrastructure.</p> <p>e) Cater for the future developments through public and private driven initiatives where discharge capacity permits.</p> <p>f) Address the issue of disposal of surface water generated by existing development in the area, through improvements to surface water infrastructure, including for example attenuation ponds, the application of sustainable urban drainage techniques, or by minimising the amount of hard surfaced areas, or providing porous surfaces as the opportunity arises.</p> <p>g) Protect the surface water resources of the Plan area and in individual planning applications request the provision of sediment and grease traps and pollution control measures where deemed necessary.</p> <p>h) Require all planning applications to include surface-water design calculations to establish the suitability of drainage between the site and the outfall point and require all new developments to include SuDS, to control surface water outfall and protect water quality in accordance with the requirements of Chapter 11: Development Management Standards of the Plan.</p> <p>i) Promote SuDS and grey water recycling in developments and responsible use of water by the wider community, to reduce the demand for water supply.</p> <p>j) Require SuDS schemes to be designed to incorporate the four pillars of water quality, water quantity, biodiversity and amenity to the greatest extent possible within the constraints of a given site.</p> <p>k) Allow sufficient land take for SuDS when planning the site and consider the region as a whole, in association with adjoining lands and their requirements in designing SuDS. Developers may be required to set aside lands to cater for not only their own SuDS but also regional SuDS.</p> <p>l) Promote the provision of suitable Blue/Green Infrastructure (BGI) and Nature Based Solutions to the surface water disposal in new development, as a means to provide urban flood resilience. This approach capitalises on the potential of urban green spaces and natural water flows, subject to the other planning considerations such as amenity, maintenance, traffic safety, proper planning and sustainable development and environmental requirements.</p> <p>m) To prohibit the discharge of additional surface water to combined (foul and surface water) sewers in order to maximise the capacity of existing collection systems for foul water.</p> <p>n) Encourage green roofs for the following types of development:</p> <ul style="list-style-type: none"> -Apartment developments; -Employment developments; -Retail developments; -Leisure facilities; -Education facilities. <p>Traffic</p> <p><i>Objective TR 044 Traffic Management</i></p> <p>It is an objective of the Council to require the submission of Mobility Management Plans and Traffic and Transport Assessments in</p>

SEA Statement for the Abbeyfeale Local Area Plan 2023-2029

Topic	Potentially Significant Adverse Effect, if Unmitigated	Local Area Plan measures, including:	Existing Limerick Development Plan 2022-2028 measures, including:
			<p>accordance with the requirements of Traffic and Transport Assessment Guidelines (2014)), for developments with the potential to create significant additional demands on the traffic network by virtue of the nature of their activity, the number of employees, their location or a combination of these factors and for significant developments affecting the national and non-national road network.</p> <p>Waste Management <i>Objective IN 015 Waste Management and the Circular Economy</i> It is an objective of the Council to:</p> <p>a) Support innovative, smart solutions and processes, based on the principles of the circular economy to implement the Regional Waste Management Plan for the Southern Region 2015 – 2021 and any subsequent plan, including any targets contained therein.</p> <p>b) Collaborate with the Regional Waste Management Office and other agencies to implement the EU Action Plan for the Circular Economy – Closing the Loop, 2015, its successor the Circular Economy Action Plan: A New Circular Economy Action Plan for a Cleaner More Competitive Europe, 2020 and the Resource Opportunity-Waste Management Policy, DECLG, 2012 and any subsequent plans.</p> <p>c) Promote sustainable patterns of consumption and production in the areas of product design, production processes and waste management.</p> <p>d) Implement the provisions of the Waste Action Plan for a Circular Economy – Ireland’s National Waste Policy 2020 - 2025, DECC, 2020 in the assessment of planning applications.</p> <p>e) Protect existing civic amenity sites and bring sites throughout Limerick and support the development of additional sites in accordance with the Southern Regional Waste Management Plan 2015 – 2021 and any subsequent plans.</p> <p><i>Objective IN 019 Construction and Demolition</i> It is an objective of the Council to:</p> <p>a) Require construction Waste Management Plans to be submitted as part of planning applications, to address waste management on site during construction and mitigation measures to address waste generation, in accordance with the principles of the circular economy and the principles of prevention, renewal and recycle.</p> <p>b) Require a Refurbishment/Demolition Asbestos Survey (RDAS) with full details of disposal of the asbestos to be submitted with any planning application. The RDAS should be carried out in accordance with Section 8 of the Health and Safety Authority, Asbestos Guidelines (Practical Guidelines on ACM Management and Abatement) by a suitable qualified professional with expertise in asbestos disposal.</p> <p><i>Objective IN 021 Hazardous Waste and Contaminated Sites</i> It is an objective of the Council to:</p> <p>a) Implement the EPA’s National Hazardous Waste Management Plan (NHWMP) 2014-2020 and any subsequent plans.</p> <p>b) Collaborate and seek guidance from the Environmental Protection Agency (EPA), the Health and Safety Authority (HAS), Health Service Executive (HSE) and Southern Region Waste Management Office, on the technical requirements for clearance and redevelopment of any contaminated lands when dealing with planning applications at these locations.</p> <p><i>Development Management Standards, including under 11.8 “Transport and Infrastructure” and 11.10 “Environmental Infrastructure”</i></p>
Cultural Heritage	<ul style="list-style-type: none"> Potential effects on protected and unknown archaeology and protected architecture arising from construction and operation activities. 	<p>Objective CH 07: Built Heritage: It is an objective of the Council to Promote the protection and improvement of built heritage in accordance with the NPO 11 of the Project Ireland 2040, RSES, Limerick Development Plan 2022 – 2028, Section 28 Guidelines, including the Architectural Heritage Protection Guidelines for Planning Authorities.</p> <p>Objective CH 08: Protected Structures: It is an objective of the Council to</p> <p>a) Resist the demolition of Protected Structures, in whole or in part, the removal or modification of features of architectural importance, and design element that would adversely affect the character or setting of a Protected Structure, unless exceptional circumstances can be clearly demonstrated by a suitably qualified professional.</p> <p>b) Protect Protected Structures and attendant grounds in accordance with the best conservation practice and relevant heritage legislation</p> <p>c) Support the re-introduction of traditional features on Protected Structures where there is evidence that such features (e.g. window styles, finishes etc.) previously existed.</p>	<p><i>Policy EH P5 Protection of the Built Environment</i> It is a policy of the Council to promote high standards for conserving and restoring the built environment and promote its value in improving living standards and its benefits to the economy.</p> <p><i>Objective EH 021 Commercial and Industrial Noise</i> It is an objective of the Council to prevent members of the public being significantly adversely effected by environmental noise from commercial and industrial noise activities.</p> <p><i>Objective EH 022 Entertainment Noise</i> It is an objective of the Council to manage entertainment noise from venues and music events, so as not to have an adverse effect on the public.</p> <p><i>Objective EH 035 Preservation of the Archaeological Heritage</i> It is an objective of the Council to seek the preservation of all known sites and features of historical and archaeological interest. This is to include all the sites listed in the Record of Monuments and Places as established under Section 12 of the National Monuments (Amendment) Act 1994. The preferred option is preservation in situ, or at a minimum preservation by record.</p> <p><i>Objective EH 036 Preservation of unrecorded/newly discovered Archaeological Heritage</i> It is an objective of the Council to protect and preserve the preservation in situ (or at a minimum by record) of all sites and features of historical and archaeological interest, discovered subsequent to the publication of the Record of Monuments and Places.</p> <p><i>Objective EH 038 Protection of the setting of Archaeological Monuments</i> It is an objective of the Council to ensure that no development shall have a negative impact on the character or setting of an archaeological monument.</p> <p><i>Objective EH 039 Proper procedures during the planning process</i> It is an objective of the Council to:</p>

SEA Statement for the Abbeyfeale Local Area Plan 2023-2029

Topic	Potentially Significant Adverse Effect, if Unmitigated	Local Area Plan measures, including:	Existing Limerick Development Plan 2022-2028 measures, including:
		<p>d) Positively consider proposals to improve, alter, extend or change the use of Protected Structures and attendant grounds so as to render them viable for modern use. Proposed works shall be subject to demonstration by a suitably qualified Conservation Architect or other relevant expert that the structure, character, appearance and setting will not be adversely affected and, suitable design, materials and construction methods will be utilised in accordance with best conservation practice and relevant heritage legislation.</p> <p>e) Promote awareness of the appropriate adaption of built heritage to climate change as per Government Draft Heritage Ireland 2030, the Climate Change Sectoral Adaptation Plan for the Built and Archaeological Heritage, 2019, the Built Vernacular Strategy, 2021, the pending National Policy on Architecture, the Limerick Climate Adaption Strategy 2019 – 2024 and higher-level spatial plans. The Council have regard to the Department of Environment, Heritage and Local Government's publication on Energy Efficiency in Traditional Buildings (2010) and the Irish Standard IS EN 16883:2017 Conservation of Cultural Heritage – Guidelines for Improving the Energy Performance of Historic Buildings (2017) and any future advisory documents in assessing proposed works on Protected Structures.</p> <p>Objective CH 09: Architectural Conservation Areas (ACA's): It is the objective of the Council to:</p> <p>a) Protect, conserve and where appropriate, enhance the ACA's as identified in Map 4. The design of any development any proposed works in the Architectural Conservation Area, including any changes of use of an existing building, should preserve and/ or enhance the character and appearance of the Architectural Conservation Area as a whole.</p> <p>b) Proposals for development within the ACA's shall; Reflect and respect the scale and form of existing structures within the ACA's in proportioning, overall scale and use of materials and finishes, particularly with reference to the street frontages and seek to contribute to or enhance the character and streetscape of the ACA's;</p> <p>Seek to retain/incorporate/replicate exterior features which contribute or enhance the character and streetscape of the ACA's such as shop fronts, sash windows, gutters and down pipes, decorative plasterwork etc;</p> <p>Ensure priority is given to the pedestrian, to inclusive access, and to facilitating the improvement of the quality of the public realm: the latter will include for consideration of the planting of trees in the wider public open spaces, benches for sitting and the articulation of uses through appropriate paving.</p> <p>Objective CH 10: Archaeological Heritage: It is the objective of the Council to:</p> <p>(a) Seek the preservation of all known sites and features of historical and archaeological interest. This includes all the sites listed on the Sites and Monuments Record as established under Section 12 of the National Monuments (Amendment) Act 1994.</p> <p>(b) Protect and preserve all sites and features of historical interest discovered subsequent to the publication of the Sites</p>	<p>a) Ensure early engagement at preplanning stage in undertaken with the Local Authority Archaeologist to promote the 'preservation in situ' of archaeological remains and settings in development.</p> <p>b) Adopt a policy of archaeological monitoring on developments where the scale and nature of such developments may, in the opinion of the Planning Authority, have a negative impact on previously unknown archaeological features/artefacts.</p> <p>c) Require the preparation of an Archaeological Heritage Assessment in cases where it is deemed that Archaeological Heritage would be affected by a proposed development (due to their location, size or nature). The report shall be prepared by a suitably qualified archaeologist on the archaeological implications, if any, of the proposed development either prior to a decision on a planning application or prior to commencement of development on site.</p> <p><i>Objective EH 040 Archaeological Monuments in Local Authority ownership/guardianship</i> It is an objective of the Council to preserve and enhance as appropriate and as funding allows monuments vested in the Local Authority.</p> <p><i>Objective EH 042 Industrial Archaeology</i> It is an objective of the Council to:</p> <p>a) Seek the preservation of buildings and infrastructure associated with former industrial sites;</p> <p>b) Ensure detailed recording of these remains; promote knowledge and interpretation of these sites among the general public;</p> <p>c) Support the work of the Interreg Atlantic Coast Area project, (MMIAH) The recovery and valorisation of Maritime Military and Industrial Heritage.</p> <p><i>Objective EH 044 Raise public awareness and encourage active participation</i> It is an objective of the Council to generally raise public awareness of the archaeological and historic heritage and to assist and encourage active participation by the public, following consultation with National Monuments Service, in the conservation, consolidation and presentation of landmark sites, where this is appropriate and subject to available resources.</p> <p><i>Objective EH 045 Heritage Plan 2017-2030</i> It is an objective of the Council to support the archaeological objectives in the Heritage Plan.</p> <p><i>Objective EH 046 Increase access to Archaeological Monuments</i> It is an objective of the Council to facilitate public access to National Monuments in State or Local Authority care.</p> <p><i>Objective EH 048 Work to Protected Structures</i> It is an objective of the Council to:</p> <p>a) Protect structures included on the RPS from any works that would negatively impact their special character and appearance.</p> <p>b) Ensure that any development proposals to Protected Structures, their curtilage and setting, shall have regard to the 'Architectural Heritage Protection Guidelines for Planning Authorities' published by the Department of the Arts, Heritage and the Gaeltacht.</p> <p>c) Ensure that all works are carried out under the supervision of a qualified professional with specialised conservation expertise.</p> <p>d) Ensure that any development, modification, alteration, or extension affecting a Protected Structure and/or its setting, is sensitively sited and designed and is appropriate in terms of the proposed scale, mass, height, density, layout and materials.</p> <p>e) Ensure that the form and structural integrity of the Protected Structure is retained in any redevelopment and that the relationship between the Protected Structure and any complex of adjoining buildings, designed landscape features, or views and vistas from within the grounds of the structure are respected.</p> <p>f) Respect the special interest of the interior, including its plan form, hierarchy of spaces, architectural detail, fixtures and fittings and materials.</p> <p>g) Support the re-introduction of traditional features on protected structures where there is evidence that such features (e.g. window styles, finishes etc.) previously existed.</p> <p>h) Ensure that new and adapted uses are compatible with the character and special interest of the Protected Structure.</p> <p>i) Protect the curtilage of protected structures and to refuse planning permission for inappropriate development within the curtilage and attendant grounds, that would adversely impact on the special character of the Protected Structure.</p> <p>j) Protect and retain important elements of built heritage including historic gardens, stone walls, entrance gates and piers and any other associated curtilage features.</p> <p>k) Ensure historic landscapes and gardens associated with Protected Structures are protected from inappropriate development.</p> <p><i>Objective EH 049 Energy Efficiency of Protected Structures</i> It is an objective of the Council to have regard to the Department of Environment, Heritage and Local Government's publication on Energy Efficiency in Traditional Buildings (2010) and the Irish Standard IS EN 16883:2017 Conservation of Cultural Heritage – Guidelines for Improving the Energy Performance of Historic Buildings (2017) and any future advisory documents in assessing proposed works on Protected Structures.</p> <p><i>Objective EH 050 National Inventory of Architectural Heritage (NIAH)</i> It is an objective of the Council to review and update the RPS on foot of any Ministerial recommendations including the NIAH and any</p>

Topic	Potentially Significant Adverse Effect, if Unmitigated	Local Area Plan measures, including:	Existing Limerick Development Plan 2022-2028 measures, including:
		<p>and Monuments Record, this includes all sites that may be discovered during the course of excavation or construction.</p> <p>(c) Protect and preserve all underwater, riverine archaeological sites.</p> <p>(d) Ensure that any proposed development shall not have a negative impact on the character or setting of an archaeological monument or which is seriously injurious to its cultural or educational value.</p> <p>(c) The area of a monument and the associated buffer area shall not be included as part of the open space requirement demanded of a specific development, but should be additional to the required open spaces; and</p> <p>(d) If appropriate, where such a monument lies within a development, a conservation and/or management plan for that monument shall be submitted as part of the landscape plan for the proposal.</p> <p>(e) Promote awareness of the appropriate adaption of archaeological heritage to climate change as per Government policy 'Built and Archaeological Heritage – Climate Change Sectoral Adaption Plan', 2019 Department of Culture, Heritage and the Gaeltacht, Draft Heritage 2030, and Limerick Climate Adaption Strategy 2019 – 2024 and higher level spatial plans.</p> <p>Objective CH 11: Cultural Heritage: It is the objective of the Council to:</p> <p>a) Ensure that the capacity to stage public events is a factor in the design of public realm throughout the town.</p> <p>b) Support the further development of the cultural heritage of Abbeyfeale, through the development of festival and events.</p>	<p>future updates. The Ministerial Recommendations, made under Section 53 of the Planning Act, will be taken into account when the Planning Authority is considering proposals for development that would affect the historic or architectural interest of these structures.</p> <p><i>Objective EH 051 Architectural Conservation Areas</i></p> <p>It is an objective of the Council to:</p> <p>a) Protect the character and special interest of an area, which has been designated as an Architectural Conservation Area (ACA) as set out in Volume 3.</p> <p>b) Ensure that all development proposals within an ACA be appropriate to the character of the area having regard to the Character briefs for each area.</p> <p>c) Ensure that any new development or alteration of a building within an ACA or immediately adjoining an ACA, is appropriate in terms of the proposed design, including scale, height, mass, density, building lines and materials.</p> <p>d) Seek a high quality, sensitive design for any new development(s) that are complementary and/or sympathetic to their context and scale, whilst simultaneously encouraging contemporary design which is in harmony with the area. Direction can also be taken from using traditional forms that are then expressed in a contemporary manner, rather than a replica of a historic building style.</p> <p>e) Seek the retention of all features that contribute to the character of an ACA, including boundary walls, railings, soft landscaping, traditional paving and street furniture.</p> <p>f) Seek to safeguard the Georgian heritage of Limerick.</p> <p><i>Objective EH 052 Shopfronts within an ACA</i></p> <p>It is an objective of the Council to:</p> <p>a) Ensure that all original and traditional shopfronts, which contribute positively to the appearance and character of a streetscape, within an ACA are retained and restored.</p> <p>b) Ensure that new shopfronts are well designed, through the sympathetic use of scale, proportion and materials</p>
Landscape	<ul style="list-style-type: none"> • Occurrence of adverse visual impacts and conflicts with the appropriate protection of designations relating to the landscape. 	<p>Also refer to measures under Biodiversity and Flora and Fauna and Cultural Heritage</p> <p>Objective ED 01: Enterprise and Employment Objectives: It is an objective of the Council to</p> <p>a) Encourage the reuse and redevelopment of appropriately zoned vacant units, brownfield, derelict and infill sites for employment creation, subject to normal planning and environmental criteria.</p> <p>b) Ensure any proposals for the lands zoned for Enterprise and Employment adjoining the N21 include a Traffic and Transport Assessment, to ensure that the local road network and associated junctions with the regional road have sufficient capacity to facilitate the extent of the development planned. The costs of implementing mitigation measures arising from the assessment shall be borne by the developer. Any proposals on these sites shall ensure the provision of a minimum 20m landscaped buffer zone between proposed development and residential developments.</p> <p>c) Ensure any proposal for part of the lands zoned Enterprise and Employment does not preclude the development of the remaining zoning lands. Any proposal submitted on these lands shall include an indicative layout which allows for a coordinated development at Mountmahon.</p> <p>d) Retain sufficient lands around the site boundaries where industrial, enterprise or distribution activities are proposed to</p>	<p>Also refer to measures under Biodiversity and Flora and Fauna and Cultural Heritage.</p> <p><i>Policy EH P8 Landscape Character Areas</i></p> <p>It is a policy of the Council to promote the distinctiveness and where necessary safeguard the sensitivity of Limerick's landscape types, through the landscape characterisation process in accordance with the 'Draft Guidelines for Landscape and Landscape Assessment' (2000) as issued by the Department of Environment and Local Government, in accordance with the European Landscape Convention (Florence Convention) and with 'A National Landscape Strategy for Ireland – 2015- 2025'. The Council shall implement any relevant recommendations contained in the Department of Arts, Heritage and the Gaeltacht's National Landscape Strategy for Ireland, 2015 – 2025.</p> <p>LCA 07 Southern Uplands</p> <p>a) Where housing is permitted, encourage appropriate scale and high-quality design for this landscape area, combined with sensitive site location and landscaping. Respect traditional scale particularly on elevated or locally prominent sites.</p> <p>b) Strongly encourage use of landscaping plans, taking into account existing topography and landforms, in efforts to blend developments into the surrounding landscape. Retention of existing landscape features and their integration and use in helping development to blend into the landscape, is of great importance in any upland area.</p> <p>c) Not permit further forestry developments that are subject to planning permissions over 280m above sea level.</p> <p>d) Encourage development within existing settlements.</p> <p>e) This area is open to consideration for wind energy development.</p> <p>f) Where wind farms are permitted, a random spacing with random layout shall be considered in proposed wind farm developments, to limit the visual and landscape impact.</p> <p>LCA 010 Western Uplands (Western Hills/Barnagh Gap/Sugar Hill)</p> <p>a) Where housing is permitted, encourage appropriate scale and high-quality design for this landscape area, combined with sensitive site location and landscaping. Respect traditional scale particularly on elevated or locally prominent sites.</p> <p>b) Discourage the selection of locally prominent sites.</p> <p>c) Encourage the use of local landform and landscape features, combined with sensitive landscaping in order to screen development.</p> <p>d) Ensure that forestry that is subject to planning permission, is confined to below 280m above sea level to protect intact remnants of</p>

SEA Statement for the Abbeyfeale Local Area Plan 2023-2029

Topic	Potentially Significant Adverse Effect, if Unmitigated	Local Area Plan measures, including:	Existing Limerick Development Plan 2022-2028 measures, including:
		<p>accommodate landscaping to soften the visual impact and reduce the biodiversity loss of the development.</p> <p>e) Early engagement with all utilities providers, including Uisce Eireann is strongly advised.</p> <p>f) Promote inter-urban linkages and partnerships across county boundaries, capitalising on collective strengths to attract investment in Abbeyfeale, the wider West Limerick /North Kerry region and the Atlantic Economic Corridor.</p> <p>Objective CH 10: Archaeological Heritage: It is the objective of the Council to:</p> <p>(a) Seek the preservation of all known sites and features of historical and archaeological interest. This includes all the sites listed on the Sites and Monuments Record as established under Section 12 of the National Monuments (Amendment) Act 1994.</p> <p>(b) Protect and preserve all sites and features of historical interest discovered subsequent to the publication of the Sites and Monuments Record, this includes all sites that may be discovered during the course of excavation or construction.</p> <p>(c) Protect and preserve all underwater, riverine archaeological sites.</p> <p>(d) Ensure that any proposed development shall not have a negative impact on the character or setting of an archaeological monument or which is seriously injurious to its cultural or educational value.</p> <p>(c) The area of a monument and the associated buffer area shall not be included as part of the open space requirement demanded of a specific development, but should be additional to the required open spaces; and</p> <p>(d) If appropriate, where such a monument lies within a development, a conservation and/or management plan for that monument shall be submitted as part of the landscape plan for the proposal.</p> <p>(e) Promote awareness of the appropriate adaption of archaeological heritage to climate change as per Government policy 'Built and Archaeological Heritage – Climate Change Sectoral Adaption Plan', 2019 Department of Culture, Heritage and the Gaeltacht, Draft Heritage 2030, and Limerick Climate Adaption Strategy 2019 – 2024 and higher level spatial plans.</p> <p>Objective CH 10: Cultural Heritage: It is the objective of the Council to:</p> <p>a) Ensure that the capacity to stage public events is a factor in the design of public realm throughout the town.</p> <p>b) Support the further development of the cultural heritage of Abbeyfeale, through the development of festival and events.</p>	<p>peatland habitat.</p> <p>e) This area is open to consideration for wind energy development.</p> <p>f) Where wind farm development is permitted, a random spacing layout shall be considered to limit the visual and landscape impact.</p>

Section 3 Environmental Report and Submissions/ Observations

3.1 Introduction

This section details how both the Environmental Report and submissions and observations made to Limerick City and County Council on the Environmental Report and SEA process have been taken into account during the preparation of the Plan and the SEA.

3.2 SEA Scoping Notices and Submissions

As part of the scoping process for preparation of the Plan, environmental authorities⁵ were notified that a submission or observation in relation to the scope and level of detail of the information to be included in the Environmental Report could be made to the Council.

Submissions were made by the following environmental authorities:

- Environmental Protection Agency; and
- Department of Agriculture, Food and the Marine.

The issues raised in these submissions and how these issues have been taken into account during preparation of the Plan and the SEA are provided on Table 3.1 below. Taking into account these submissions included integrating environmental considerations into the Plan, including through the selection of Plan provisions identified on Table 2.1.

⁵ The following authorities were notified: Environmental Protection Agency; Department of Environment, Climate and Communications; Department of Agriculture, Food and the Marine; Department of Housing, Local Government and Heritage; Clare County Council; Kerry County Council; Cork County Council; and Tipperary County Council.

Table 3.1 Taking into account SEA Scoping Submissions

No.	Submission text/Summary of Submission	SEA Response
1	Submission from Environmental Protection Agency	
A	We acknowledge your notice, dated 13 December 2022, in relation to the Abbeyfeale Local Area Plan 2023-2029 (the 'Plan').	Noted.
B	The EPA is one of the statutory environmental authorities under the SEA Regulations. In our role as an SEA environmental authority, we focus on promoting the full and transparent integration of the findings of the Environmental Assessment into the Plan and advocating that the key environmental challenges for Ireland are addressed as relevant and appropriate to the plan. Our functions as an SEA environmental authority do not include approving or enforcing SEAs or plans.	Noted.
C	As a priority, we focus our efforts on reviewing and commenting on key sector plans. For land use plans at county and local level, we provide a 'self-service approach' via the attached guidance document 'SEA of Local Authority Land Use Plans – EPA Recommendations and Resources'. This document is updated regularly and sets out our key recommendations for integrating environmental considerations into Local Authority land use Plans. We recommend that you take this guidance document into account in preparing the Plan and SEA.	The 'SEA of Local Authority Land Use Plans – EPA Recommendations and Resources' document has been considered in the preparation of the SEA Scoping Report and will be kept on file for reference throughout the SEA process.
D	In preparing the Plan, Limerick City and County Council should also ensure that the Plan aligns with key relevant higher-level plans and programmes and is consistent with the relevant objectives and policy commitments of the National Planning Framework and the Regional Spatial and Economic Strategy for the Southern Region. The EPA may provide additional comments upon receipt of the SEA Environmental Report and Draft Plan at the next stage of the SEA process.	The SEA will seek to ensure that the Plan aligns with key relevant higher-level plans and programmes and is consistent with the relevant objectives and policy commitments of the National Planning Framework and the Regional Spatial and Economic Strategy for the Southern Region.
E	Available Guidance & Resources Our website contains various SEA resources and guidance, including: - SEA process guidance and checklists - Inventory of spatial datasets relevant to SEA - topic specific SEA guidance (including Good practice note on Cumulative Effects Assessment (EPA, 2020), Guidance on SEA Statements and Monitoring (EPA, 2020), Integrating climatic factors into SEA (EPA, 2019), Developing and Assessing Alternatives in SEA (EPA, 2015), and Integrated Biodiversity Impact Assessment (EPA, 2012)) You can access these guidance notes and other resources at: https://www.epa.ie/our-services/monitoring--assessment/assessment/strategic-environmental-assessment/sea-topic-and-sector-specific-guidance/	These resources and guidance have been considered in the preparation of the SEA Scoping Report and will be accessed, as relevant, for reference throughout the SEA process.
F	Environmental Sensitivity Mapping (ESM) Webtool The ESM Webtool is a new decision support tool to assist SEA and planning processes in Ireland. The tool brings together over 100 datasets and allows users to explore environmental considerations within a particular area and create plan-specific environmental sensitivity maps. These maps can help planners anticipate potential land-use conflicts and help identify suitable development locations, while also protecting the environment. The ESM Webtool is available at www.enviromap.ie .	The ESM Webtool has been considered in the preparation of this report and will be considered throughout the SEA process, where relevant.
G	EPA SEA GIS Search and Reporting Webtool Our SEA GIS Search and Reporting Webtool is publicly available through EPA Maps at https://gis.epa.ie/EPAMaps/SEA . It allows public authorities to produce an indicative report on key aspects of the environment in a specific geographic area. It is intended to assist public authorities in SEA screening and scoping exercises.	Available online EPA resources, including mapping resources, have been considered in the preparation of the SEA Scoping Report and will be considered throughout the SEA and AA processes.
H	EPA WFD Application Our WFD Application provides a single point of access to water quality and catchment data from the national WFD monitoring programme. The Application is accessed through EDEN https://wfd.edenireland.ie/ and is available to public agencies. Publicly available data can be accessed via the Catchments.ie website.	
I	EPA AA GeoTool Our AA GeoTool application has been developed in partnership with the NPWS. It allows users to select a location, specify a search area and gather available information for each European Site within the area. It is available at: https://gis.epa.ie/EPAMaps/AAGeoTool .	

No.	Submission text/Summary of Submission	SEA Response
J	<p>State of the Environment Report – Ireland’s Environment 2020</p> <p>In preparing the Plan and SEA, the recommendations, key issues and challenges described within our State of the Environment Report Ireland’s Environment – An Integrated Assessment 2020 (EPA, 2020) should be considered, as relevant and appropriate to the Plan. It should also be taken into account, in preparing the Plan.</p>	<p>The recommendations, key issues and challenges described within the current version of Ireland’s Environment will be considered in the preparation of the Plan and SEA.</p>
K	<p>Transition to a low carbon climate resilient economy and society</p> <p>You should ensure that the Plan aligns with national commitments on climate change mitigation and adaptation, as well as relevant sectoral, regional and local adaptation plans.</p>	<p>The SEA will seek to ensure that the Plan aligns with national commitments on climate change and adaptation, as well as relevant sectoral, regional and local adaptation plans.</p>
L	<p>Environmental Authorities</p> <p>Under the SEA Regulations, you should consult with:</p> <ul style="list-style-type: none"> • Environmental Protection Agency; • Minister for Housing, Local Government and Heritage; • Minister for Environment, Climate and Communications; and • Minister for Agriculture, Food and the Marine. • any adjoining planning authority whose area is contiguous to the area of a planning authority which prepared a draft plan, proposed variation or local area plan. 	<p>Notice has been given to relevant environmental authorities as part of the SEA scoping process.</p>
2	Submission from Department of Agriculture, Food and the Marine	
A	<p>Background</p> <p>This application is for the SEA Scoping preparation of a draft Abbeyfeale Local Area Plan.</p> <p>Fishery Harbours</p> <p>There are no impacts on fishery harbours that a scoping would need to be cognisance of.</p> <p>Aquaculture</p> <p>The area in question has no licensed aquaculture sites operating in proximity to the applicants proposed area. Thus no further observations at this time.</p> <p>Sea fishing</p> <p>Not relevant</p> <p>Cumulative Impact</p> <p>MED is not aware of any other developments, plans or projects that may, in conjunction with this scoping, that have significant cumulative effects for this office to consider.</p> <p>Conclusion</p> <p>MED has no further observations at this time.</p>	<p>Noted. This information will be taken into account by the SEA as relevant.</p>

3.3 Submissions on the Environmental Report for the Draft Plan

Various submissions were made on the Draft Plan, Proposed Material Alterations and/or associated environmental assessment documents while these documents were on public display.

Updates made on foot of submissions include additional provisions regarding the provision of water services infrastructure and services.

For further information on how submissions were considered, refer to the Chief Executive's Report on submissions received on the Draft Plan and associated documents and the Chief Executive's Report on submissions received on the Proposed Material Alterations and associated documentation – both available at <https://www.limerick.ie/>.

All parts of the Plan-preparation process were informed by the SEA, AA and SFRA processes - this includes the preparation of the Draft Plan and subsequent consideration of Proposed Material Alterations. The mitigation integrated into the final, adopted Plan includes that identified at Table 2.1 of this report.

3.4 SEA documents including SEA Environmental Report

The Draft Plan and accompanying documents (including SEA Environmental Report and AA and SFRA documents) were placed on public display, having integrated various recommendations arising from the SEA, AA and SFRA processes. Responses to submissions made during the public display of the Draft Plan and associated SEA, AA and SFRA documents were integrated into a Chief Executive's Report and considered by Limerick City and County Council.

A number of material alterations were proposed after public display of the Draft Plan. The Proposed Material Alterations were subject to Screening for SEA and Screening for AA. Responses to submissions made during the public display of the Proposed Material Alterations and associated SEA, AA and SFRA

documents were integrated into a Chief Executive's Report and considered by Limerick City and County Council.

On adoption of the Plan, the Environmental Report that had been placed on public display alongside the Draft Plan was updated to become a final Environmental Report that is consistent with the adopted Plan, taking into account all changes that were made to the original Draft Plan that was placed on public display.

Section 4 Summary of Alternatives considered

4.1 Introduction

The SEA Directive requires that reasonable alternatives (taking into account the objectives and the geographical scope of the plan or programme) are identified, described and evaluated for their likely significant effects on the environment. Summaries of the alternatives for the Plan and their assessment are provided below.

4.2 Limitations in Available Alternatives

The Plan is required to be prepared by the existing, already in force, Limerick Development Plan 2022-2028 and the Planning and Development Act 2000 (as amended), which specifies various types of objectives that must be provided for by the Plan.

The alternatives available for the Plan are guided by the provisions of higher-level planning objectives, including those of the National Planning Framework, the Regional Spatial and Economic Strategy for the Southern Region and the Development Plan. These documents set out various requirements for the content of the Plan including on topics such as land use zoning and the sustainable development of settlements.

4.3 Land Use Zoning Alternatives

Limerick City and County Council in preparing a Draft Plan for public display developed the following alternatives for land use zoning in Abbeyfeale (there are various alternative components under each heading):

Land Use Zoning Alternative 1 “More Consolidated, More Compact”

Population growth targets for Abbeyfeale are already provided for under the Core Strategy of the Limerick Development Plan 2022-2028. The Local Area Plan is required to provide for the zoning of sufficient lands in order to meet this target. Land Use Zoning Alternative 1 “More Consolidated, More Compact” would zone sufficient lands to allow Abbeyfeale to reach population allocation, resulting in balanced orderly development and implementation of the core strategy as contained in Chapter 2 of the Limerick Development Plan 2022-2028.

The more compact, serviced/serviceable land and infrastructure assessment approach under this alternative would allow for water supply, waste water, compact growth, public transport and co-ordinated development considerations to be integrated into the Plan to the highest degree. Gaps in infrastructure are identified and new development must ensure appropriate protection of the environment.

Less new infrastructure would be required than would be the case for Alternative 2 “Less Consolidated, Less Compact” – reducing the occurrence of potential direct impacts from new infrastructure and potential shortfalls.

The development of the Town Centre would be more compact and more sustainable under this scenario and would support the longer-term viability of the settlement. 30% of Residential units would be expected on Town Centre lands. The quantum of New Residential lands would be significantly lower than would be the case under Land Use Zoning Alternative 2 “Less Consolidated, Less Compact”. Furthermore, Enterprise and Employment zoned lands would be more compact and would be closer to existing infrastructure. The approach would avoid unnecessary greenfield development (and associated effects on components including

soil, ecology, water and the landscape) in more peripheral locations and help to maximise opportunities for sustainable mobility (reducing emissions to air).

Opportunity sites would be identified with clear guidance on design and proposed uses identified – making successful applications for the sustainable, compact development of the town more likely.

The approach under Land Use Zoning Alternative 1 “More Consolidated, More Compact” would benefit the protection and management of various environmental components. Although potentially adverse effects associated with land use development would exist, they would be mitigated to a significant degree.

Land Use Zoning Alternative 2 “Less Consolidated, Less Compact”

Population growth targets for Abbeyfeale are already provided for under the Core Strategy of the Limerick Development Plan 2022-2028. The Local Area Plan is required to provide for the zoning of sufficient lands in order to meet this target. Land Use Zoning Alternative 2 “Less Consolidated, Less Compact” would zone excess lands, allowing Abbeyfeale to reach the population target; however, the over provision of zoned lands would be likely to result in less balanced and less orderly development.

By not following a more compact, serviced/serviceable land and infrastructure assessment approach, this alternative would not allow for water supply, waste water, compact growth, public transport and co-ordinated development considerations to be integrated into the Plan to the highest degree. More new infrastructure would be required than would be the case for Alternative 1 “More Consolidated, More Compact” – increasing the occurrence of potential direct impacts from new infrastructure and potential shortfalls.

The development of the Town Centre would be less compact and less sustainable under this scenario and would not optimally support the longer-term viability of the settlement to the same degree as would be the case with Land Use Zoning Alternative 1. 30% of Residential units would be less likely to be achieved on Town Centre lands. The quantum of New Residential lands would be significantly higher than would be the case under Land Use Zoning Alternative 1. The additional New Residential lands would be on more peripheral, less well serviced lands. Furthermore, Enterprise and Employment zoned lands would be less compact, including additional lands to the north of Coláiste Íde agus Iosef and the town’s large supermarket. The approach would provide for unnecessary greenfield development (and associated effects on components including soil, ecology, water and the landscape) in more peripheral locations and help to maximise opportunities for sustainable mobility (reducing emissions to air).

The approach under Land Use Zoning Alternative 2 “Less Consolidated, Less Compact” would miss an opportunity to mitigate potentially adverse effects on various environmental components arising from land use development in Abbeyfeale.

The Selected Land Use Zoning Alternative for the Draft Plan and the adopted Plan is Land Use Zoning Alternative 1 “More Consolidated, More Compact”.

4.4 Transport Infrastructure Alternatives

Limerick City and County Council in preparing a Draft Plan for public display developed the following alternatives for focusing on mitigation with respect to new transport infrastructure in Abbeyfeale:

Transport Infrastructure Alternative 1 “Focus on Mitigation at Plan and Project level”

Alternative 1 would require transport infrastructure projects that are not already permitted or provided for by existing plans/ programmes to be subject to feasibility assessment and, where feasibility is established, a Corridor and Route Selection Process. Under Alternative 1 new transport infrastructure would be considered subject to environmental constraints, including those related to habitats and potential impacts (e.g. disturbance from lighting). This would include minimising river crossings, avoiding sensitive habitats, not increasing barriers to flood waters and sustainable design and construction techniques. By focusing on mitigation at both plan and project levels, Alternative 1 would offer the most certainty for environmental protection and management and would be more likely to result in important individual projects (relating to sustainable mobility and emissions/energy objectives) receiving permission.

Transport Infrastructure Alternative 2 “Focus on Mitigation at Project level only”

The provision of new transport infrastructure, with all additional environmental mitigation left to be defined in the future, at project level (Alternative 2) would offer the least certainty for environmental protection and management and would be more likely to result in important individual projects (relating to sustainable mobility and emissions objectives) not been given permission.

The Selected Transport Infrastructure Alternative for the Draft Plan and the adopted Plan is Transport Infrastructure Alternative 1 “Focus on Mitigation at Plan and Project level”.

4.5 Reasons for choosing the Plan in the light of the other reasonable alternatives dealt with

Selected alternatives for the Plan from each of the two types of alternatives that emerged from the planning/SEA process are indicated above.

These alternatives have been adopted by the Members having regard to both:

1. The environmental effects which were identified by the SEA and are summarised above; and
2. Planning - including social and economic - effects that also were considered by the Members.

Section 5 Monitoring Measures

5.1 Introduction

The SEA Directive requires that the significant environmental effects of the implementation of plans and programmes are monitored. This section details the measures which can be considered and used as appropriate when it comes to monitoring the likely significant effects of implementing the Plan. The measures may be updated over time, as new requirements and information emerge, for example.

Monitoring can both demonstrate the positive effects facilitated by the Plan and can enable, at an early stage, the identification of unforeseen adverse effects and the undertaking of appropriate remedial action.

The occurrence of significant adverse environmental effects not predicted and mitigated by this assessment, which are directly attributable to the implementation of the Plan, would necessitate consideration of these effects in the context of the Plan and potential remediation action(s) and/or review of part(s) of the Plan.

5.2 Indicators and Targets

Monitoring is based around indicators which allow quantitative measures of trends and progress over time relating to the Strategic Environmental Objectives that were used in the evaluation. Indicators are accompanied by targets which are identified with regard to the relevant strategic actions.

Given the position of the Local Area Plan in the land use planning hierarchy beneath the Limerick Development Plan and the Regional Spatial and Economic Strategy for the Southern Region, the measures identified in SEAs for these Plans have been integrated into those for this SEA outlined below. This consistency across the hierarchy of land use plans will improve the efficiency and effectiveness of future monitoring.

Table 5.1 shows the indicators and targets which have been selected for monitoring the likely significant environmental effects of implementing the Plan, if unmitigated.

Monitoring is an ongoing process and the programme allows for flexibility and the further refinement of indicators and targets. The Monitoring Programme may be updated to deal with specific environmental issues – including unforeseen effects – as they arise.

5.3 Sources

The Plan forms part of the wider land use planning framework comprising a hierarchy of policies, plans, programmes, etc. This wider framework, including the National Planning Framework, the Southern RSES and the Limerick Development Plan is subject to its own SEA (and associated monitoring) requirements. Individual projects will be subject to their own monitoring requirements as relevant.

In implementing the Monitoring Programme the Council will take into account this hierarchy of planning and environmental monitoring.

Sources for indicators may include existing monitoring databases (including those maintained by planning authorities and national/regional government departments and agencies) and the output of lower-tier environmental assessment and decision making (including a review of project approvals granted and associated documents and the output of any EIA monitoring programmes).

Internal monitoring of the environmental effects of grants of permission in the Council would provide monitoring of certain indicators on a *grant of permission*⁶ basis. Where significant adverse effects as a result of the development to be permitted are identified, such effects could be identified, recorded and used to inform monitoring evaluation.

⁶ The likely significant effects of development proposals on environmental sensitivities are further determined during the development management process. Documenting any identified effects as a result of a development to be permitted can help to fulfill monitoring requirements.

5.4 Reporting

A stand-alone Monitoring Report on the significant environmental effects of implementing the Plan will be prepared in advance of the beginning of the review of the Plan. Monitoring frequencies of indicators tend to change although where they are consistent frequencies are identified.

The measures set out on Table 5.1 can be considered and used as appropriate when it comes to monitoring the likely significant effects of implementing the Plan. The indicators may be updated over time, as new requirements and information emerge, for example.

The methodology for monitoring set out below will be undertaken by the Council. Where monitoring beyond existing sources is to be undertaken, it is recommended that industry standard methods are used where they exist and where appropriate.

Reporting may be undertaken in conjunction with the monitoring reporting on other plans, such as the Development Plan and other Local Area Plans.

The Council is responsible for the ongoing review of indicators and targets, collating existing relevant monitored data, the preparation of monitoring evaluation report(s), the publication of these reports and, if necessary, the carrying out of remedial action

Table 5.1 Indicators, Targets, Sources and Remedial Action

Environmental Component	SEO Code	Indicators	Targets	Sources	Remedial Action
Biodiversity, Flora and Fauna	BFF	<ul style="list-style-type: none"> Conservation status of habitats and species as assessed under Article 17 of the Habitats Directive 	<ul style="list-style-type: none"> Maintenance of favourable conservation status for all habitats and species protected under national and international legislation Identification of sites of local biodiversity and ecological corridors Require all local level land use plans to include ecosystem services and green/blue infrastructure provisions in their land use plans and as a minimum, to have regard to the required targets in relation to the conservation of European sites, other nature conservation sites, ecological networks, and protected species Implement and review, as relevant, Limerick Heritage Plan 2017-2030 	<ul style="list-style-type: none"> DHLGH report of the implementation of the measures contained in the Habitats Directive - as required by Article 17 of the Directive (every 6 years)⁷ DHLGH National Birds Directive Monitoring Report for the under Article 12 (every 6 years)⁸ Consultations with the NPWS⁹ 	<ul style="list-style-type: none"> Where condition of European sites is found to be deteriorating this will be investigated with the Regional Assembly and the DHLGH to establish if the pressures are related to Plan actions / activities. A tailored response will be developed in consultation with these stakeholders in such a circumstance. Loss of favourable conservation status of protected habitats and species. Altered zoning objectives in place for the Natura 2000 sites has taken place in the Plan Enforcement action may also be required
		<ul style="list-style-type: none"> Retention of sufficient areas zoned for open space Number of spatial plans that have included ecosystem services content, mapping and policy to protect ecosystem services when their relevant plans are either revised or drafted 	<ul style="list-style-type: none"> Require all local level land use plans to include ecosystem services and green/blue infrastructure provisions in their land use plans and as a minimum, to have regard to the required targets in relation to the conservation of European sites, other nature conservation sites, ecological networks, and protected species Implement and review, as relevant, Limerick Heritage Plan 2017-2030 	<ul style="list-style-type: none"> Internal review of local land use plans 	<ul style="list-style-type: none"> Review internal systems
		<ul style="list-style-type: none"> SEAs and AAs as relevant for new Council policies, plans, programmes etc. 	<ul style="list-style-type: none"> Screen for and undertake SEA and AA as relevant for new Council policies, plans, programmes etc. 	<ul style="list-style-type: none"> Internal monitoring of preparation of local land use plans 	<ul style="list-style-type: none"> Review internal systems
		<ul style="list-style-type: none"> Status of water quality in the County's water bodies 	<ul style="list-style-type: none"> Included under Water below 	<ul style="list-style-type: none"> Included under Water below 	<ul style="list-style-type: none"> Included under Water below
		<ul style="list-style-type: none"> Compliance of planning permissions with Plan measures providing for the protection of Biodiversity and flora and fauna – see Development Plan Chapter 6 "Environment, Heritage, Landscape and Green Infrastructure" 	<ul style="list-style-type: none"> For planning permission to be only granted when applications demonstrate that they comply with all Plan measures providing for the protection of biodiversity and flora and fauna – see Development Plan Chapter 6 "Environment, Heritage, Landscape and Green Infrastructure" 	<ul style="list-style-type: none"> Internal monitoring of likely significant environmental effects of grants of permission 	<ul style="list-style-type: none"> Review internal systems

⁷ Including confirmation with development management that the following impacts have been considered and including use of monitoring data, where available: biodiversity/habitat loss; nitrogen deposition impacts on Natura 2000 sites; recreational disturbance resulting from implementation of tourism and recreation policies and objectives particularly in riparian areas; biodiversity enhancement; and disturbance /visitor pressure impacts of recreation, amenity and tourism development.

⁸ Including confirmation with development management that the following impacts have been considered and including use of monitoring data, where available: biodiversity/habitat loss; nitrogen deposition impacts on Natura 2000 sites; recreational disturbance resulting from implementation of tourism and recreation policies and objectives particularly in riparian areas; biodiversity enhancement; and disturbance /visitor pressure impacts of recreation, amenity and tourism development.

⁹ Including confirmation with development management that the following impacts have been considered and including use of monitoring data, where available: biodiversity/habitat loss; nitrogen deposition impacts on Natura 2000 sites; recreational disturbance resulting from implementation of tourism and recreation policies and objectives particularly in riparian areas; biodiversity enhancement; and disturbance /visitor pressure impacts of recreation, amenity and tourism development.

Environmental Component	SEO Code	Indicators	Targets	Sources	Remedial Action
Population and Human Health	PHH	<ul style="list-style-type: none"> Implementation of Plan measures relating to the promotion of economic growth as provided for by Development Plan Chapter 5 "A Strong Economy" 	<ul style="list-style-type: none"> For review of progress on implementing Plan objectives to demonstrate successful implementation of measures relating to the promotion of economic growth as provided for by Development Plan Chapter 5 "A Strong Economy" Increase in employment opportunities, services and public services in the Plan area 	<ul style="list-style-type: none"> Internal review of progress on implementing Plan objectives Consultations with DECC 	<ul style="list-style-type: none"> Consultation with Department of Education and interested parties in order to progress suitable development opportunities for the area Review internal systems Consultations with DECC
		<ul style="list-style-type: none"> Number of spatial concentrations of health problems arising from environmental factors resulting from development permitted under the Plan 	<ul style="list-style-type: none"> No spatial concentrations of health problems arising from environmental factors as a result of implementing the Plan 	<ul style="list-style-type: none"> Consultations with the Health Service Executive and EPA 	<ul style="list-style-type: none"> Consultations with the Health Service Executive and EPA
		<ul style="list-style-type: none"> Proportion of people reporting regular cycling / walking to school and work above previous CSO figures 	<ul style="list-style-type: none"> Increase in the proportion of people reporting regular cycling / walking to school and work above previous CSO figures 	<ul style="list-style-type: none"> CSO data Monitoring of Limerick City and County Council's Climate Change Adaptation Strategy 2019-2024 	<ul style="list-style-type: none"> Where proportion of population shows increase in private car use above previous CSO figures, the Council will coordinate with the Regional Assembly, the DHLGH, DECC and NTA to develop a tailored response.
		<ul style="list-style-type: none"> Number of spatial plans that include specific green infrastructure mapping 	<ul style="list-style-type: none"> Require all local level land use plans to include specific green infrastructure mapping 	<ul style="list-style-type: none"> Internal review of local land use plans 	<ul style="list-style-type: none"> Review internal systems
Soil (and Land)	S	<ul style="list-style-type: none"> Proportion of population growth occurring on infill and brownfield lands compared to greenfield (also relevant to Material Assets) 	<ul style="list-style-type: none"> Concentrate development in the selected zoned areas and encourage re-use of existing sites Maintain built surface cover nationally to below the EU average of 4% as per the NPF In accordance with National Policy Objectives 3c of the National Planning Framework, a minimum of 30% of the housing growth targeted in any settlement is to be delivered within the existing built-up footprint of the settlement To map brownfield and infill land parcels across the County 	<ul style="list-style-type: none"> EPA Geoportal Compilation of greenfield and brownfield development for the DHLGH AA/Screening for AA for each application 	<ul style="list-style-type: none"> Enforcement, where necessary Where the proportion of growth on infill and brownfield sites is not keeping pace with the targets set in the NPF and the RSES, the Council will liaise with the Regional Assembly to establish reasons and coordinate actions to address constraints to doing so.
		<ul style="list-style-type: none"> Instances where contaminated material generated from brownfield and infill must be disposed of 	<ul style="list-style-type: none"> Dispose of contaminated material in compliance with EPA guidance and waste management requirements 	<ul style="list-style-type: none"> Internal review of grants of permission where contaminated material must be disposed of 	<ul style="list-style-type: none"> Consultations with the EPA and Development Management
		<ul style="list-style-type: none"> Environmental assessments and AAs as relevant for applications for brownfield and infill development prior to planning permission 	<ul style="list-style-type: none"> Screen for and undertake environmental assessments and AA as relevant for applications for brownfield and infill development prior to planning permission 	<ul style="list-style-type: none"> Internal monitoring of grants of permission 	<ul style="list-style-type: none"> Review internal systems

Environmental Component	SEO Code	Indicators	Targets	Sources	Remedial Action
Water	W	<ul style="list-style-type: none"> • Status of water bodies as reported by the EPA Water Monitoring Programme for the WFD • Water quality monitoring results by the EPA and by LCCC • EPA data under Urban Waste Water Discharges in Ireland Population Equivalents Greater than 500 persons - Reports • Performance of WWTP in relation to conditions of discharge licence 	<ul style="list-style-type: none"> • Not to cause deterioration in the status of any surface water or affect the ability of any surface water to achieve 'good status' • Implementation of the objectives of the River Basin Management Plan • Protect and restore areas identified in the River Basin District Management Plan required to achieve "good" status, i.e. 4+ for water quality in line with the Water Framework Directive objectives • No deterioration in levels of compliance with drinking water quality standards and maintenance of national average compliance rate 	<ul style="list-style-type: none"> • EPA Monitoring Programme for WFD compliance¹⁰ 	<ul style="list-style-type: none"> • Upgrade of WWTPs • Ongoing monitoring of discharge licences by staff from the Environment sections • Where water bodies are failing to meet at least good status this will be investigated with the DHLGH Water Section, the EPA Catchment Unit, the Regional Assembly and, as relevant, Uisce Eireann to establish if the pressures are related to Plan actions / activities. A tailored response will be developed in consultation with these stakeholders in such a circumstance. • Where planning applications are rejected due to insufficient capacity in the WWTP or failure of the WWTP to meet Emission Limit Values, the Council will consider whether it is necessary to coordinate a response with the Regional Assembly, EPA and Uisce Eireann to achieve the necessary capacity.
		<ul style="list-style-type: none"> • Number of incompatible developments permitted within flood risk areas 	<ul style="list-style-type: none"> • Minimise developments granted permission on lands which pose - or are likely to pose in the future - a significant flood risk 	<ul style="list-style-type: none"> • Internal monitoring of likely significant environmental effects of grants of permission 	<ul style="list-style-type: none"> • Where planning applications are being permitted on flood zones, the Council will ensure that such grants are in compliance with the Flood Risk Management Guidelines and include appropriate flood risk mitigation and management measures.
Material Assets	MA	<ul style="list-style-type: none"> • Programmed delivery of Uisce Eireann infrastructure for all key growth towns in line with Uisce Eireann Investment Plan and prioritisation programme to ensure sustainable growth can be accommodated • Number of new developments granted permission which can be adequately and appropriately served with waste water treatment over the lifetime of the Plan 	<ul style="list-style-type: none"> • All new developments granted permission to be connected to and adequately served by waste water treatment over the lifetime of the Plan • Where septic tanks are proposed, for planning permission to be only granted when applications demonstrate that the outfall from the septic tank will not – in combination with other septic tanks – contribute towards any surface or ground water body not meeting the objective of good status under the Water Framework Directive • Facilitate, as appropriate, Uisce Eireann in developing water and wastewater infrastructure • See also targets relating to greenfield and brownfield development of land under Soil and broadband under Population and Human Health 	<ul style="list-style-type: none"> • Internal monitoring of likely significant environmental effects of grants of permission Consultations with the Uisce Eireann • DHLGH in conjunction with Local Authorities 	<ul style="list-style-type: none"> • Where planning applications are rejected due to insufficient capacity in the WWTP or failure of the WWTP to meet Emission Limit Values, the Council will consider whether it is necessary to coordinate a response with the Regional Assembly, EPA and Uisce Eireann to achieve the necessary capacity.
		<ul style="list-style-type: none"> • Access to public amenities and facilities • Proportion of people reporting regular cycling / walking to school 	<ul style="list-style-type: none"> • Increase in area of amenity space within the Plan area • Increased usage of open space and rivers as a public amenity 	<ul style="list-style-type: none"> • CSO data • Monitoring of Limerick City and County Council's Climate Change Adaptation Strategy 2019-2024 	<ul style="list-style-type: none"> • Enforcement where necessary • Ensure that sufficient open space allocation included in Plans • Where proportion of population shows increase in

¹⁰ Including monitoring of water quality and nitrogen deposition due to bioenergy and agricultural projects where available.

SEA Statement for the Abbeyfeale Local Area Plan 2023-2029

Environmental Component	SEO Code	Indicators	Targets	Sources	Remedial Action
		and work above previous CSO figures	<ul style="list-style-type: none"> Increased visitor number to cultural heritage sites Increase in the proportion of people reporting regular cycling / walking to school and work above previous CSO figures 		private car use above previous CSO figures, the Council will coordinate with the Regional Assembly, the DHLGH, DECC and NTA to develop a tailored response.
Air	A	<ul style="list-style-type: none"> Proportion of journeys made by private fossil fuel-based car compared to previous National Travel Survey levels NO_x, SO_x, PM10 and PM2.5 as part of Ambient Air Quality Monitoring 	<ul style="list-style-type: none"> Decrease in proportion of journeys made by private fossil fuel-based car compared to previous National Travel Survey levels Improvement in Air Quality trends, particularly in relation to transport related emissions of NO_x and particulate matter 	<ul style="list-style-type: none"> CSO data Data from the National Travel Survey EPA Air Quality Monitoring Consultations with Department of Transport and Department of Environment, Climate and Communications 	<ul style="list-style-type: none"> Where proportion of population shows increase in private car use above previous CSO figures, Council will coordinate with the Regional Assembly, DHLGH, DECC and NTA to develop a tailored response. See also entry under Population and human health above
Climatic Factors¹¹	C	<ul style="list-style-type: none"> Implementation of Plan measures relating to climate reduction targets 	<ul style="list-style-type: none"> For review of progress on implementing Plan objectives to demonstrate successful implementation of measures relating to climate reduction targets 	<ul style="list-style-type: none"> Internal monitoring of likely significant environmental effects of grants of permission 	<ul style="list-style-type: none"> Establishment of dedicated section to consider climate change Review internal systems
		<ul style="list-style-type: none"> A competitive, low-carbon, climate-resilient and environmentally sustainable economy 	<ul style="list-style-type: none"> Contribute towards transition to a competitive, low-carbon, climate-resilient and environmentally sustainable economy by 2050 	<ul style="list-style-type: none"> Monitoring of Limerick City and County Council's Climate Change Adaptation Strategy 2019-2024 EPA Annual National Greenhouse Gas Emissions Inventory reporting 	<ul style="list-style-type: none"> Where targets are not achieved, the Council will liaise with the Regional Assembly and the Eastern and Midlands Climate Action Regional Office to establish reasons and develop solutions.
		<ul style="list-style-type: none"> Adoption of renewable technologies 	<ul style="list-style-type: none"> Increase in upgraded sources of energy production from renewable sources 	<ul style="list-style-type: none"> Climate Action Regional Office Consultations with DECC (at monitoring evaluation) 	
		<ul style="list-style-type: none"> Carbon dioxide (CO₂) emissions across the electricity generation, built environment and transport sectors Numbers of buildings being upgraded and insulated 	<ul style="list-style-type: none"> Contribute towards achieving the target of a 51% reduction in GHG emissions from 2021 to 2030, and net-zero emissions no later than 2050 		
		<ul style="list-style-type: none"> Energy consumption, the uptake of renewable options and solid fuels for residential heating 	<ul style="list-style-type: none"> To promote reduced energy consumption and support the uptake of renewable options and a move away from solid fuels for residential heating 		
		<ul style="list-style-type: none"> Proportion of journeys made by private fossil fuel-based car compared to previous levels 	<ul style="list-style-type: none"> Decrease in the proportion of journeys made by residents of the County using private fossil fuel-based car compared to previous levels 	<ul style="list-style-type: none"> CSO data Monitoring of Limerick City and County Council's Climate Change Adaptation Strategy 2019-2024 	<ul style="list-style-type: none"> Where trends toward carbon reduction are not recorded, the Council will liaise with the Regional Assembly and the Eastern and Midlands Climate Action Regional Office to establish reasons and develop solutions.
		<ul style="list-style-type: none"> Proportion of people reporting regular cycling / walking to school and work above previous CSO figures 	<ul style="list-style-type: none"> Increase in the proportion of people reporting regular cycling / walking to school and work above previous CSO figures 	<ul style="list-style-type: none"> CSO data Monitoring of Limerick City and County Council's Climate Change Adaptation Strategy 2019-2024 	<ul style="list-style-type: none"> Where proportion of population shows increase in private car use above previous CSO figures, the Council will coordinate with the Regional Assembly, the DHLGH, DECC and NTA to develop a tailored response.

¹¹ Please also refer to relevant legislation and requirements under Section 4.10, Section 8.5 and Appendix I. Targets under the national Climate Action Plan are reviewed and updated periodically and include those under the headings of Electricity, Built Environment, Transport, Agriculture, Forestry & Land Use and Enterprise.

Environmental Component	SEO Code	Indicators	Targets	Sources	Remedial Action
Cultural Heritage	CH	<ul style="list-style-type: none"> Number of Monuments in the Record of Monuments and Places and areas of archaeological potential which have been recorded or subject to exploration as a result of development Number of archaeological monuments and their settings damaged due to development 	<ul style="list-style-type: none"> To maintain and increase the number of archaeological features recorded and protected No damage occurring to structures or monuments and their settings due to development 	<ul style="list-style-type: none"> Internal monitoring of likely significant environmental effects of grants of permission 	<ul style="list-style-type: none"> Damage to or loss of recorded monuments, or their setting would result in enforcement actions being taken. Damage to or loss of Protected Structures, to be dealt with by enforcement. Possible training courses, facilitated by bodies such as the Heritage council and Irish Georgian Society. Where monitoring reveals visitor or development pressure is causing negative effects on designated archaeological or architectural heritage, the Council will work with Regional Assembly, Fáilte Ireland and the National Monuments Service and other stakeholders, as relevant, to address pressures through additional mitigation
		<ul style="list-style-type: none"> Number and conservation status of structures in RPS Number of buildings conserved and re-used for new development Number of protected structures damaged due to development 	<ul style="list-style-type: none"> To increase the number and maintain the conservation status of Protected Structures Increase investment through Built Heritage Investment and funding streams 	<ul style="list-style-type: none"> Consultation with DHLGH 	
Landscape	L	<ul style="list-style-type: none"> Quality of urban environment and halt in dereliction Building height and design Number of developments permitted that result in avoidable adverse visual impacts on the landscape, especially with regard to landscape and amenity designations included in Land Use Plans, resulting from development which is granted permission under the Plan 	<ul style="list-style-type: none"> Increase in quality of individual applications No developments permitted which result in avoidable adverse visual impacts on the landscape, especially with regard to landscape and amenity designations included in Land Use Plans, resulting from development which is granted permission under the Plan 	<ul style="list-style-type: none"> Internal monitoring of likely significant environmental effects of grants of permission 	<ul style="list-style-type: none"> Enforcement through planning legislation and Derelict Sites Act Adequate input into DM applications from ACO, Archaeologist and HO Where monitoring reveals developments permitted which result in avoidable adverse visual impacts on the landscape, the Council will re-examine Plan provisions and the effectiveness of their implementation