

Limerick Division - Joint Policing Committee

10/06/2022

Lisa Collins, Senior Intelligence Analyst



JPC Objectives

Provide a brief statistical overview of current position as of 01/06/2022:

1. Domestic Abuse Incidents
2. Property Crime at a Divisional Level (broken down by District)
 - Additional attention afforded to Burglary
3. Crime Against the Person at a Divisional Level (broken down by District)
 - Additional attention afforded to Assault.
4. Proactive Policing Measure
 - Includes Possession of Drugs, Sale of Drugs, and Offensive Weapons
5. Traffic
 - Fatalities/Serious Injuries figures YTD
 - Drink and Drug Driving Offences
 - LifeSaver Offences

All information is based upon operational data from the PULSE System as was available on the 01/06/2022 and is liable to change. Crime Counting rules are applied, unless otherwise stated. Incident counts are based on date reported.

Domestic Abuse Incidents

Year to date :

**Division is
+31%**

includes

Breach of Interim Barring Order
Breach of Protection Order
Breach of Barring Order
Breach of Safety Order
Domestic Dispute – No Offence Disclosed
Breach of Emergency Barring Order; and
Any incident with Domestic M.O.

All information is based upon operational data from the PULSE System as was available on the 30/05/2022 and is liable to change. Incident counts are based on date reported.

Property Crime:
YTD the Division is **up 69%**
(1,036 to 1,748)

HS
+81%
(617 to 1,119)

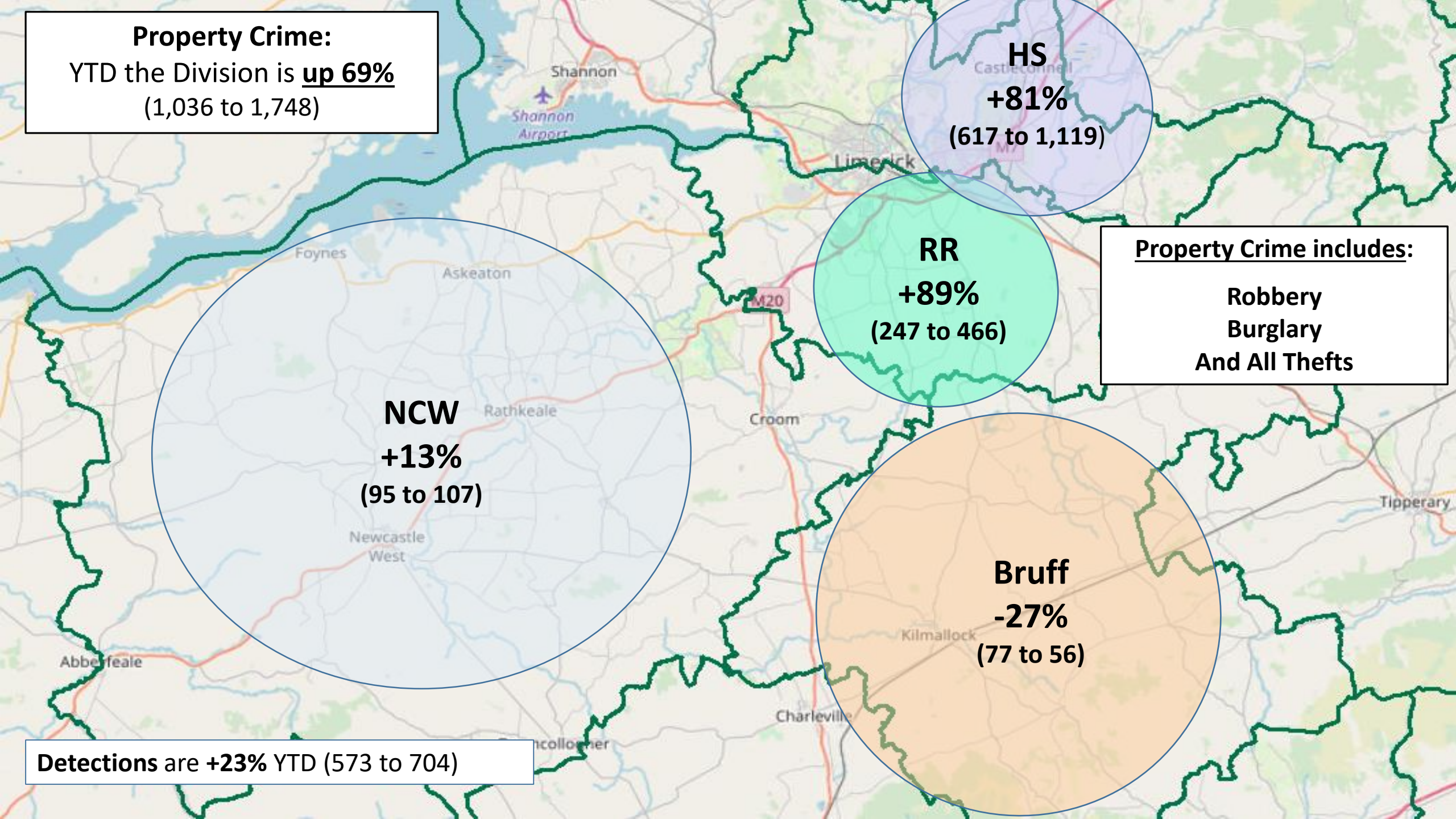
RR
+89%
(247 to 466)

Property Crime includes:
Robbery
Burglary
And All Thefts

NCW
+13%
(95 to 107)

Bruff
-27%
(77 to 56)

Detections are +23% YTD (573 to 704)



Non Aggravated Burglary: up 52% YTD
(133 to 202)

Residential Burglary is **+39%** YTD
Non Residential Burglary is **+81%** YTD

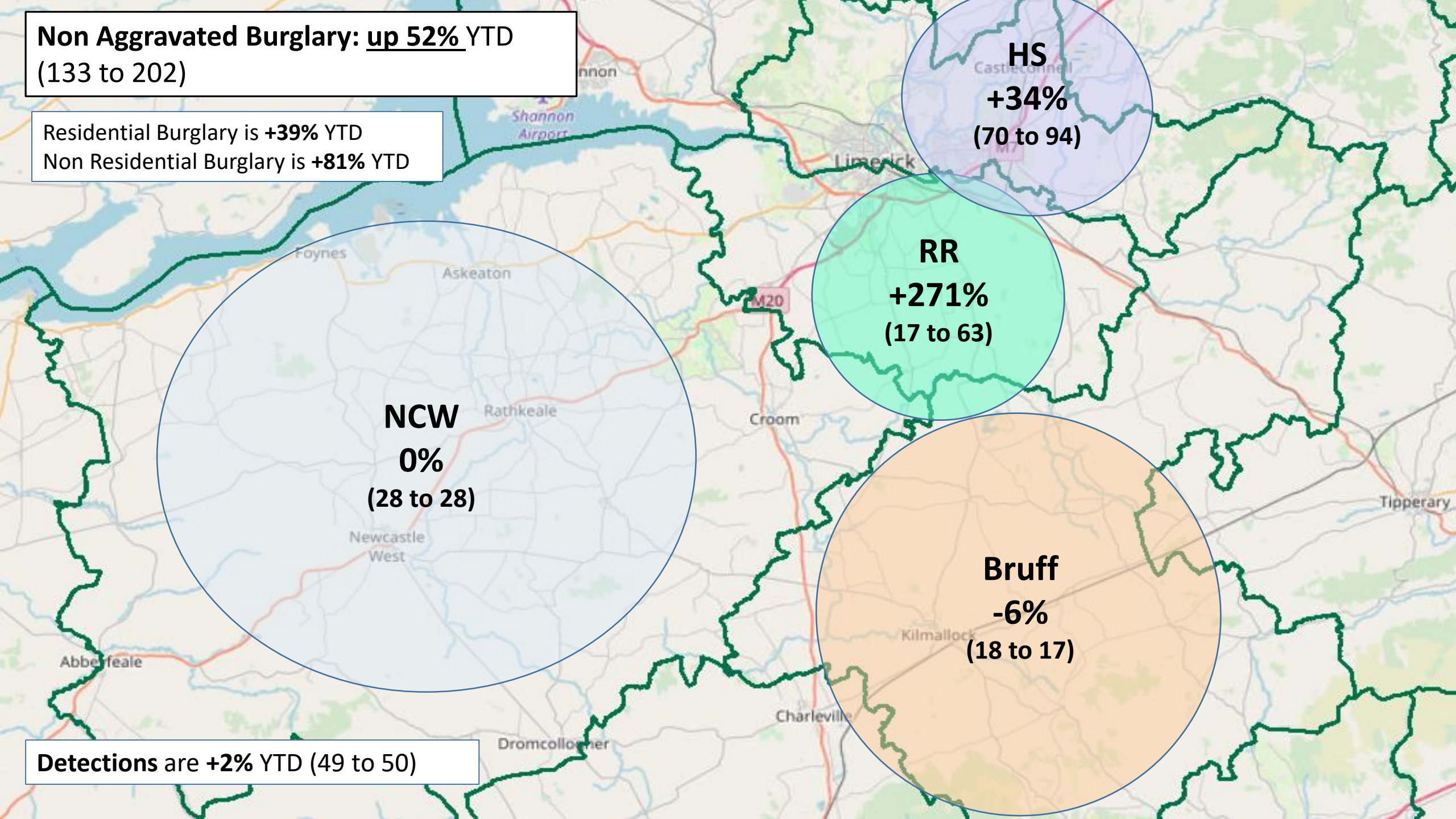
HS
+34%
(70 to 94)

RR
+271%
(17 to 63)

NCW
0%
(28 to 28)

Bruff
-6%
(18 to 17)

Detections are +2% YTD (49 to 50)



**Crimes Against the Person:
Up 54% YTD (319 to 492)**

**HS
+51%
(167 to 252)**

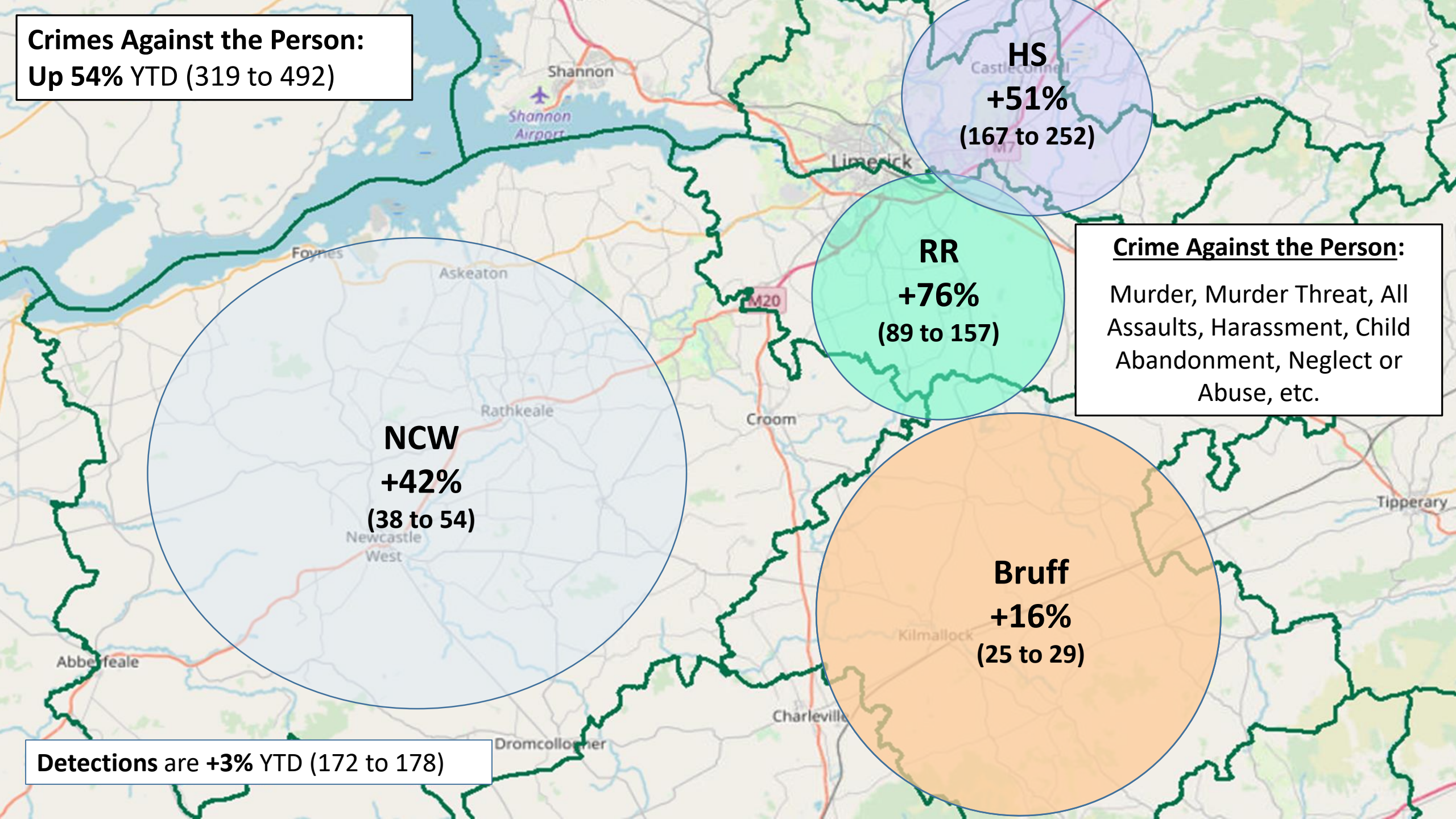
Crime Against the Person:
Murder, Murder Threat, All Assaults, Harassment, Child Abandonment, Neglect or Abuse, etc.

**RR
+76%
(89 to 157)**

**NCW
+42%
(38 to 54)**

**Bruff
+16%
(25 to 29)**

Detections are +3% YTD (172 to 178)



Overall Assaults: up 95%
(203 to 396)

Assaults Causing Harm: +49% YTD (63 to 94)
Minor Assaults : +116% YTD (140 to 302)

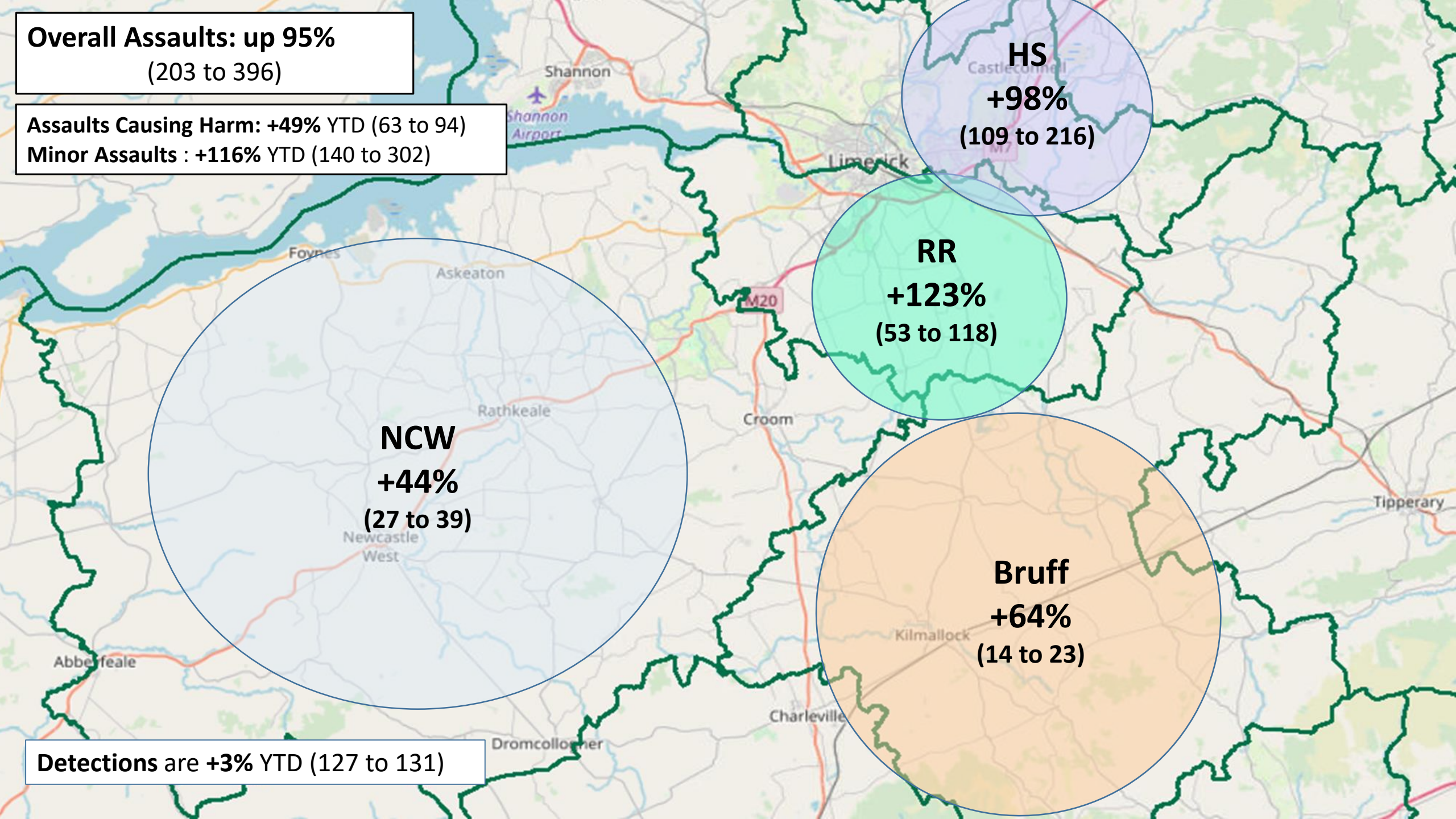
HS
+98%
(109 to 216)

RR
+123%
(53 to 118)

NCW
+44%
(27 to 39)

Bruff
+64%
(14 to 23)

Detections are +3% YTD (127 to 131)



Proactive Policing Measures

Possession of Drugs for Personal Use

Down **55%** YTD
(334 to 150)

Possession of Drugs for Sale/Supply

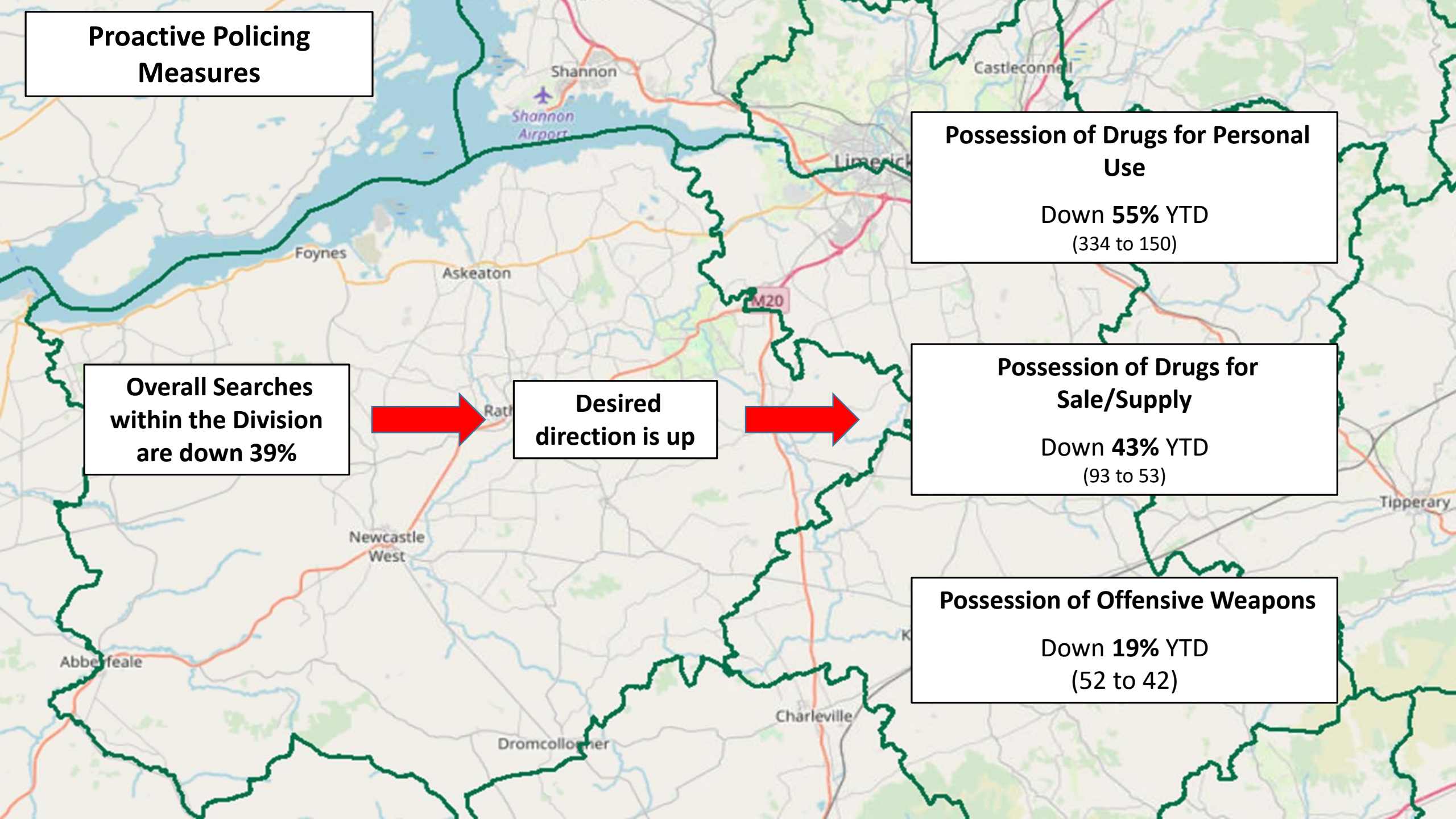
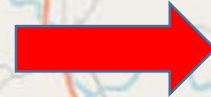
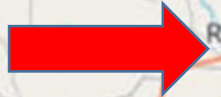
Down **43%** YTD
(93 to 53)

Possession of Offensive Weapons

Down **19%** YTD
(52 to 42)

Overall Searches within the Division are down 39%

Desired direction is up



Traffic

Fatal Collisions: 5 in 2022 YTD (+150%)
Serious Injury Collision: 16 in 2022 YTD (-16%)

There have been **985 MIT** Checkpoints conducted in the Division – down 34% (1488 YTD 2021)

101 Driving While Intoxicated Offences. (down 26% YTD)

Including **32 Drug Driving Offences** (down 61% YTD)

Our most recent data regarding **LifeSaver Offences** shows the following Jan to Apr Trends



+68%
(226 to 380)



-7%
(166 to 154)



-39%
(876 to 534)