

# Limerick Division - Joint Policing Committee

04/12/2020

*Lisa Collins, Senior Intelligence Analyst*





# JPC Objectives

## Provide a brief statistical overview of current position as of 01/12/2020:

1. Covid -19 Related Activity and Domestic Abuse
2. Property Crime at a Divisional Level (broken down by District)
  - Additional attention afforded to Burglary
3. Crime Against the Person at a Divisional Level (broken down by District)
  - Additional attention afforded to Assault.
4. Proactive Policing Measure
  - Includes Possession of Drugs, Sale of Drugs, Firearms and Offensive Weapons
5. Traffic
  - Fatalities/Serious Injuries figures YTD
  - Drink and Drug Driving Offences
  - LifeSaver Offences

***All information is based upon operational data from the PULSE System as was available on the 01/12/2020 and is liable to change. Crime Counting rules are applied, unless otherwise stated. Incident counts are based on date reported.***

## Covid 19 Related Activity

As of the 01/12/2020:

**26**

Covid 19 Infectious Diseases (Powers under the Health Act, 1947)

## Domestic Abuse Incidents

From January to end of November:

**Division is  
+8%**

From Week 13 to Week 48

**Division is  
+14%**

includes

Breach of Interim Barring Order

Breach of Protection Order

Breach of Barring Order

Breach of Safety Order

Domestic Dispute – No Offence Disclosed

Breach of Emergency Barring Order; and

Any incident with Domestic M.O.

*All information is based upon operational data from the PULSE System as was available on the 01/12/2020 and is liable to change. Incident counts are based on date reported.*



**Property Crime:**  
YTD the Division is **down 17%**  
(3,545 to 2,949)

**HS**  
**-17%**  
(2,179 to 1,815)

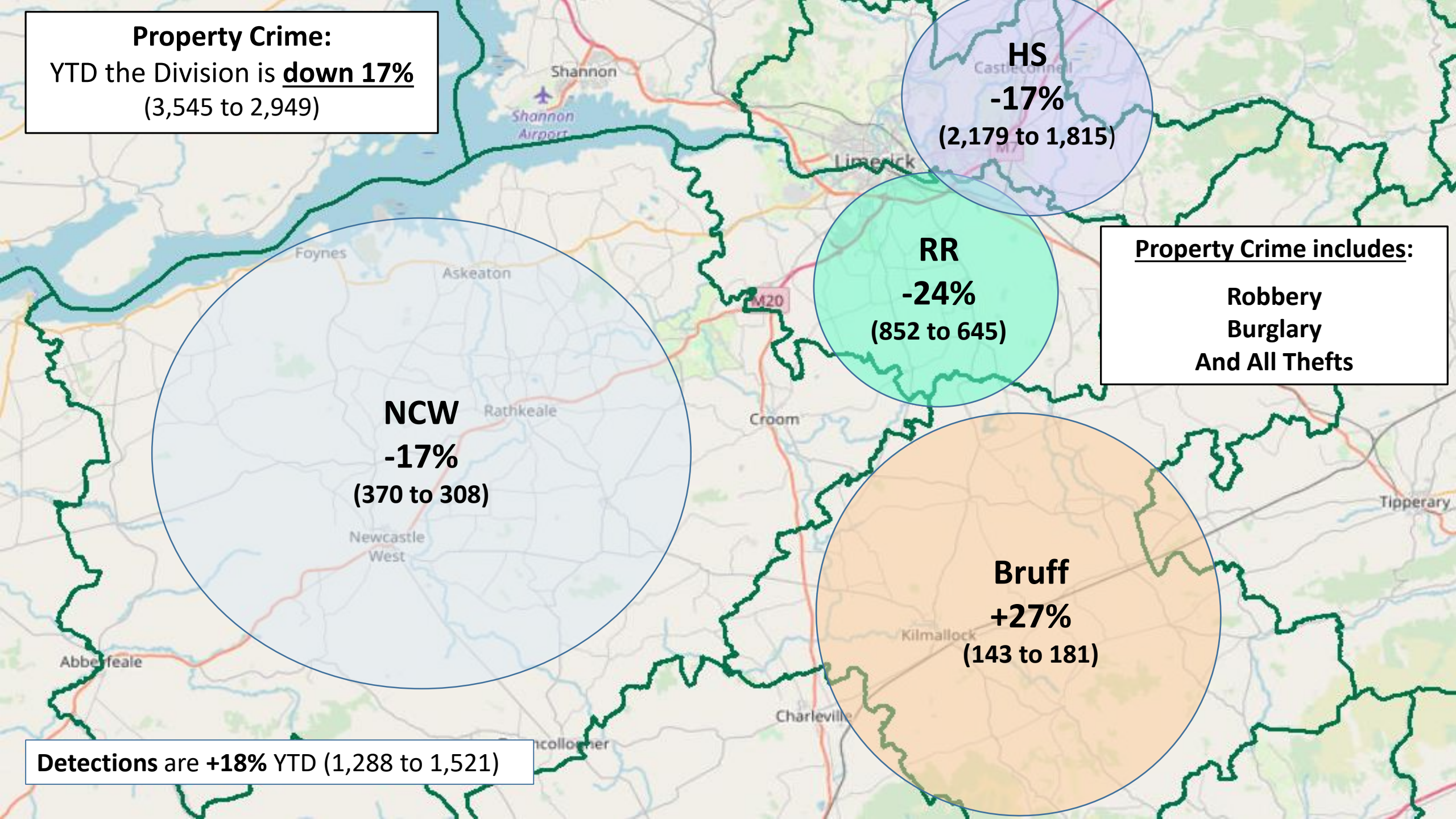
**Property Crime includes:**  
**Robbery**  
**Burglary**  
**And All Thefts**

**RR**  
**-24%**  
(852 to 645)

**NCW**  
**-17%**  
(370 to 308)

**Bruff**  
**+27%**  
(143 to 181)

**Detections are +18% YTD (1,288 to 1,521)**





**Non Aggravated Burglary: down 28% YTD**  
(716 to 512)

Residential Burglary is **-30%** YTD  
Non Residential Burglary is **-24%** YTD

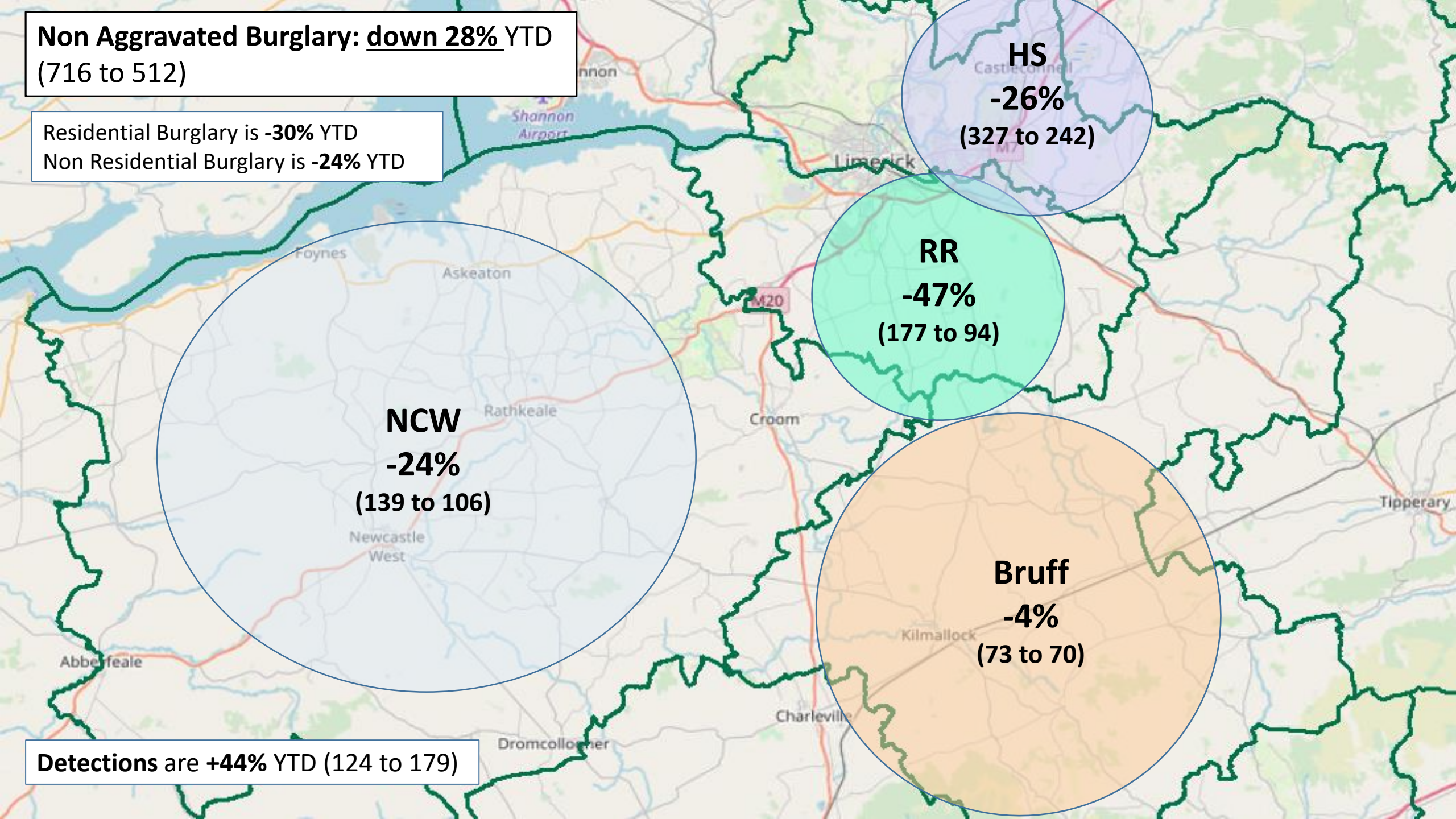
**HS**  
**-26%**  
(327 to 242)

**RR**  
**-47%**  
(177 to 94)

**NCW**  
**-24%**  
(139 to 106)

**Bruff**  
**-4%**  
(73 to 70)

**Detections are +44%** YTD (124 to 179)





**Crimes Against the Person:  
down 15% YTD (919 to 782)**

**HS**  
**-15%**  
**(461 to 394)**

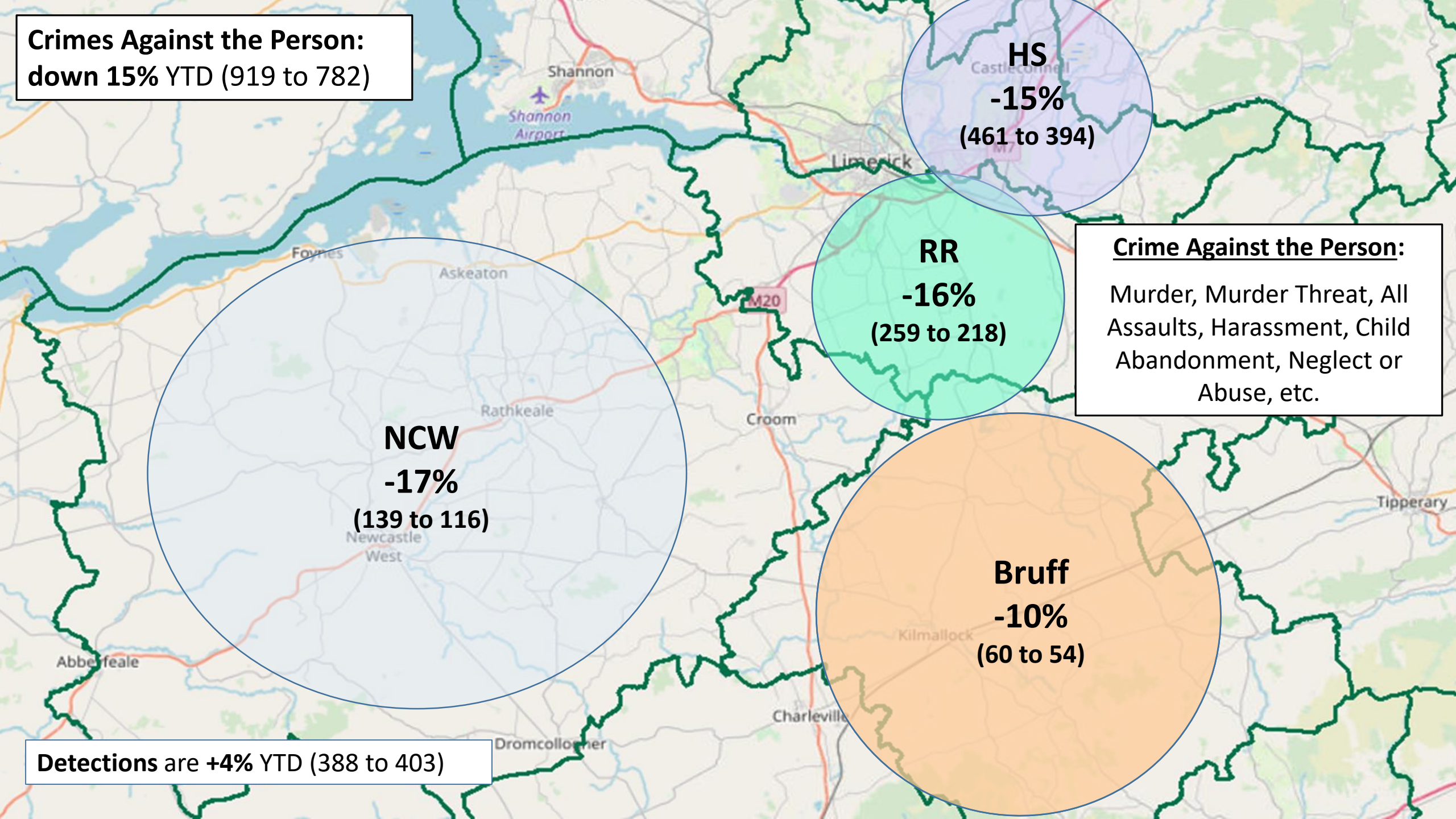
**RR**  
**-16%**  
**(259 to 218)**

**Crime Against the Person:**  
Murder, Murder Threat, All Assaults, Harassment, Child Abandonment, Neglect or Abuse, etc.

**NCW**  
**-17%**  
**(139 to 116)**

**Bruff**  
**-10%**  
**(60 to 54)**

**Detections are +4% YTD (388 to 403)**





**Overall Assaults: down 22%**  
(704 to 549)

**Assaults Causing Harm: -26% YTD** (216 to 159)  
**Minor Assaults : -20% YTD** (488 to 390)

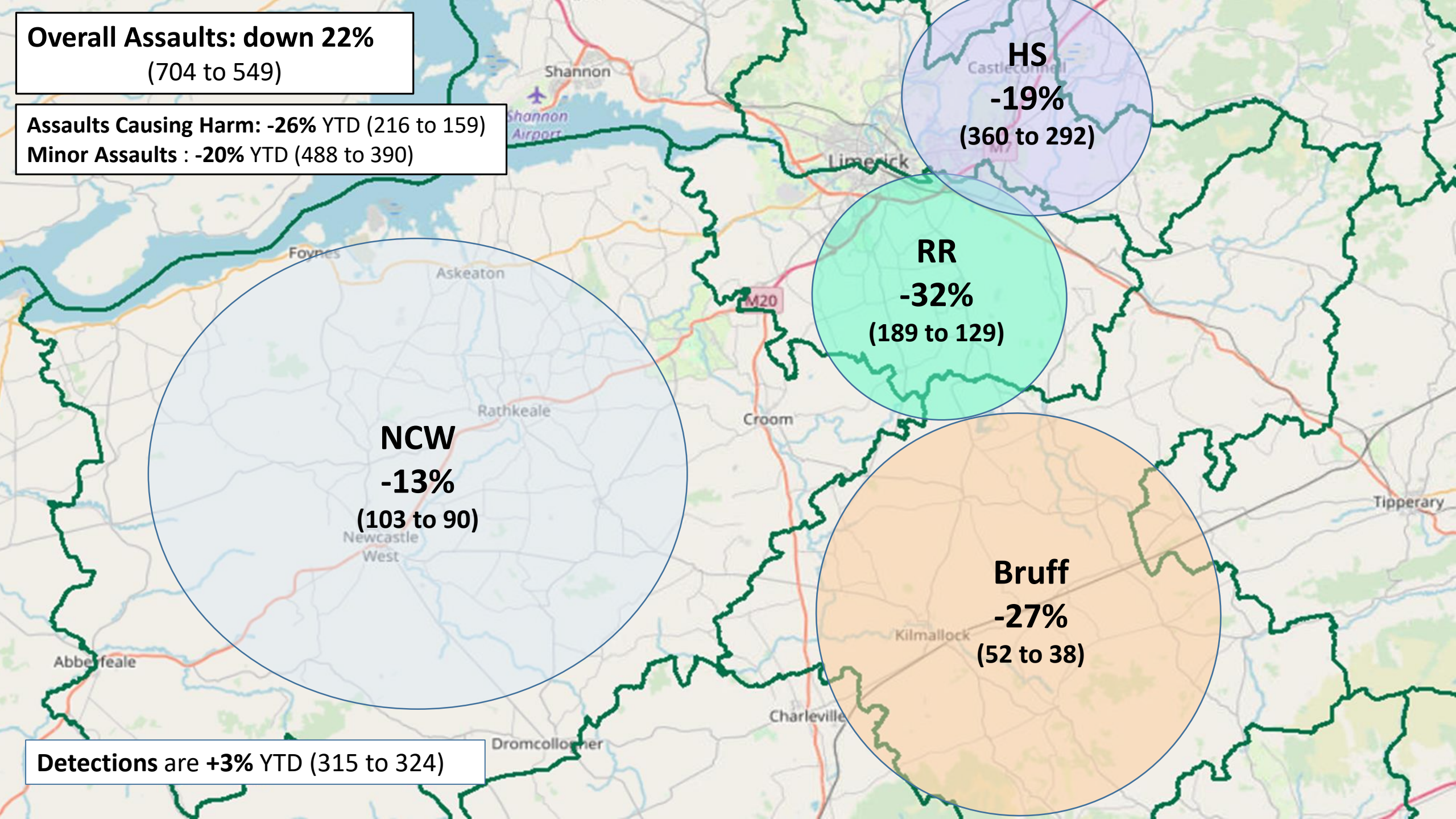
**HS**  
**-19%**  
(360 to 292)

**RR**  
**-32%**  
(189 to 129)

**NCW**  
**-13%**  
(103 to 90)

**Bruff**  
**-27%**  
(52 to 38)

**Detections are +3% YTD** (315 to 324)





**Proactive Policing Measures**

**Possession of Drugs for Personal Use**

Up 2% YTD  
(553 to 566)

**Possession of Drugs for Sale/Supply**

Up 33% YTD  
(154 to 205)

**Possession of Firearm**

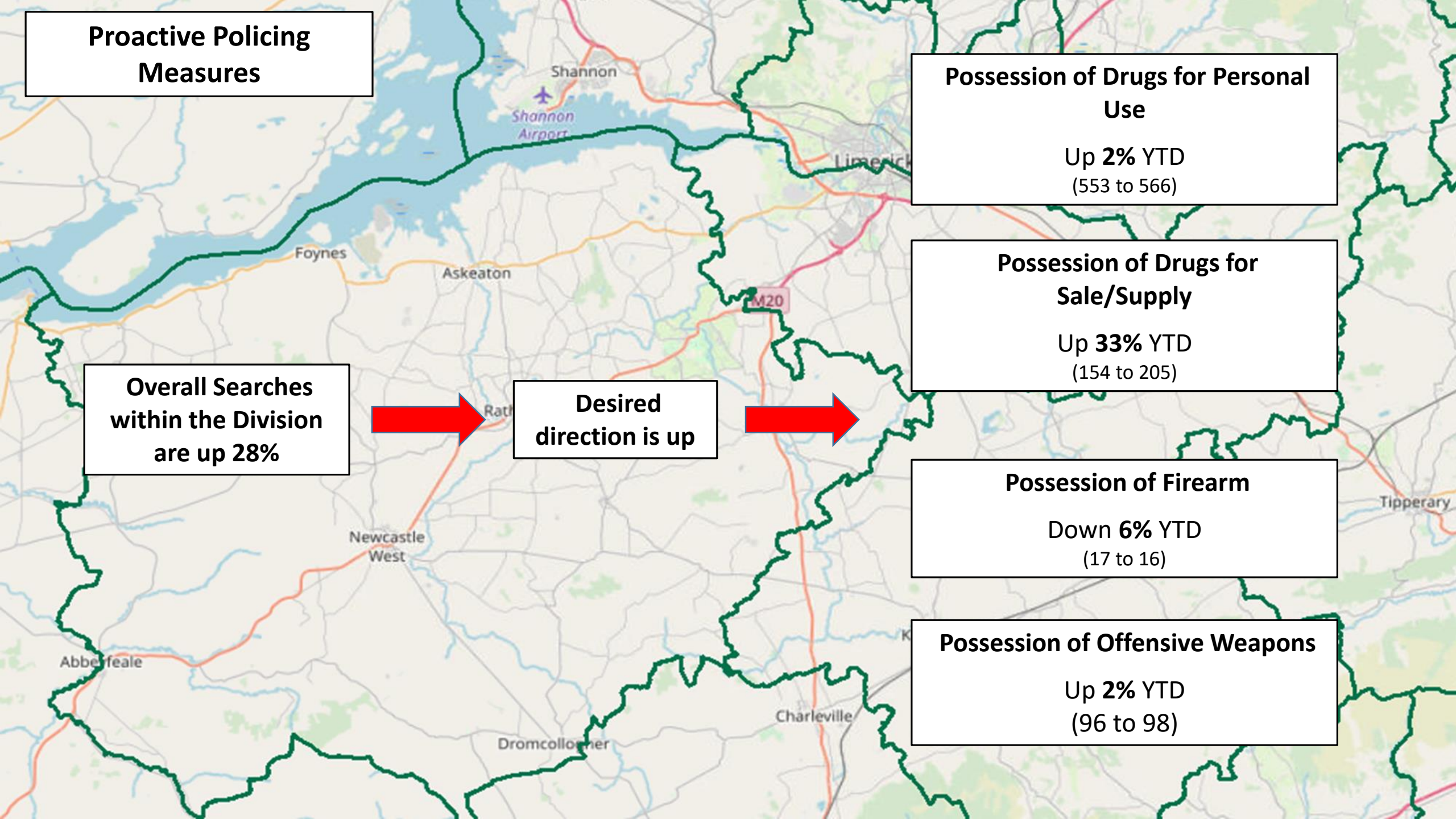
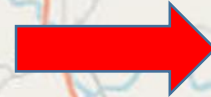
Down 6% YTD  
(17 to 16)

**Possession of Offensive Weapons**

Up 2% YTD  
(96 to 98)

**Overall Searches within the Division are up 28%**

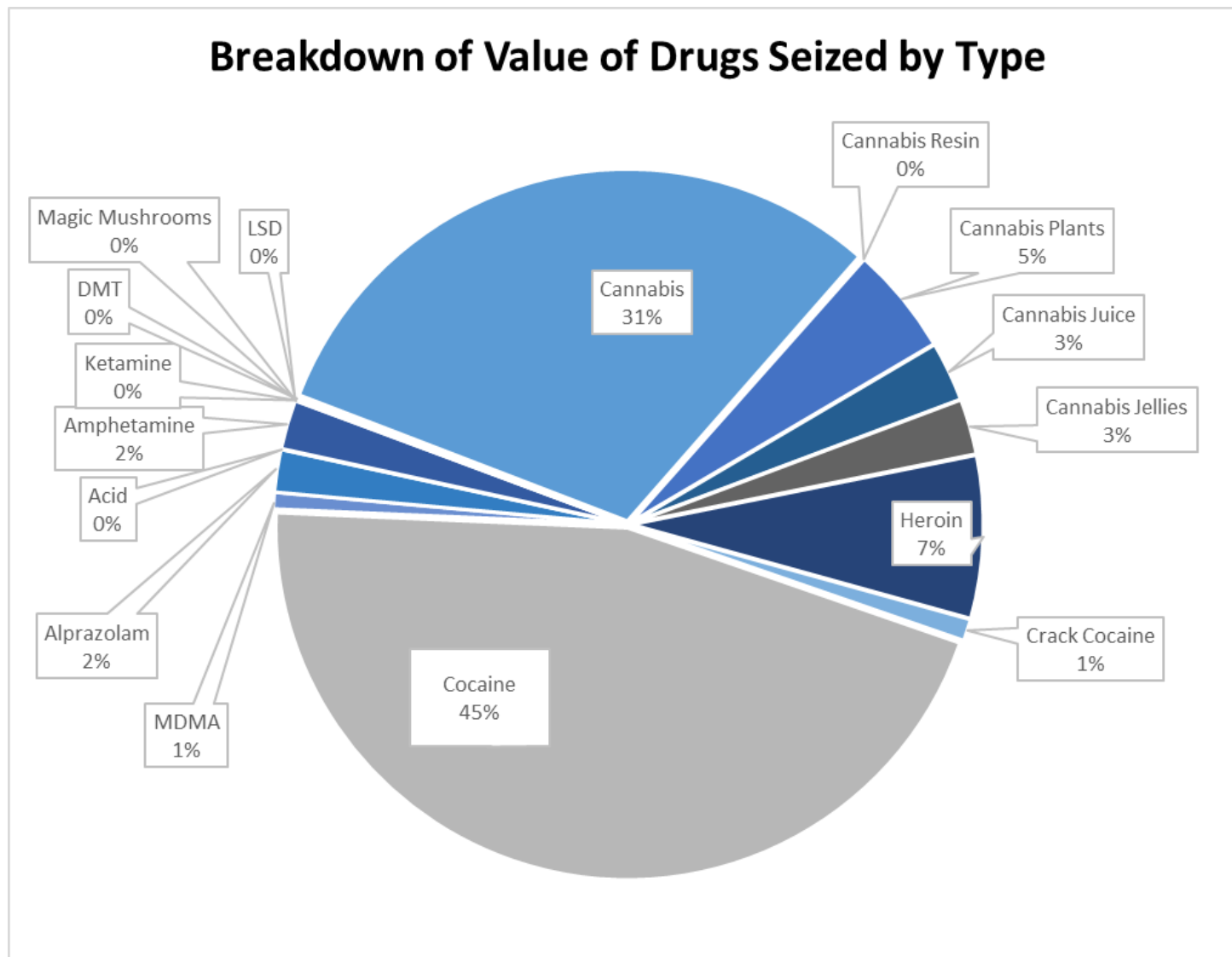
**Desired direction is up**





# Drugs Seizures – January to November (incl) 2020

Section 26 Warrants =	348
Total Value of Drugs Seized	€ 1,782,455
Cannabis	€ 545,930
Cannabis Resin	€ 1,725
Cannabis Plants	€ 88,800
Cannabis Juice	€ 48,900
Cannabis Jellies	€ 45,420
Heroin	€ 133,190
Crack Cocaine	€ 17,825
Cocaine	€ 808,975
MDMA	€ 13,495
Alprazolam	€ 34,735
Acid	€ 350
Amphetamine	€ 40,250
Ketamine	€ 520
Magic Mushrooms	€ 250
LSD	€ 290
DMT	€ 1,800
Cash Seized	€ 292,618



*Figures provided by Sergeants Martin McCarthy and Mick Dunne, Divisional Drugs Unit, Henry Street Garda Station.*

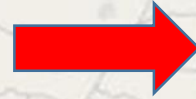


## Traffic

**Fatal Collisions: 6** in 2020 YTD (-25%)  
**Serious Injury Collision: 36** in 2020 YTD (-28%)

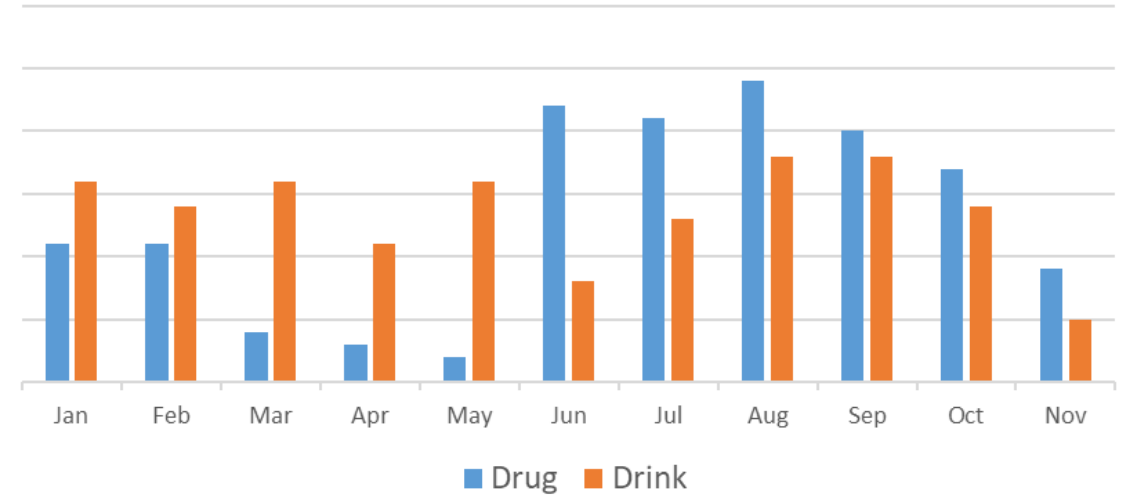
There have been **2,432 MIT** Checkpoints conducted in the Division – down 39% (3,979 in 2019)

**293 Driving While Intoxicated Offences.** (up 5% YTD)



Including **144 Drug Driving Offences** (up 129% YTD)

### Drug Driving -V- Drink Driving 2020



Our most recent data regarding **LifeSaver Offences** shows the following Jan to Oct Trends



**-59%**  
**(2,028 to 822)**



**-56%**  
**(1,306 to 581)**



**-23%**  
**(4,956 to 3,835)**