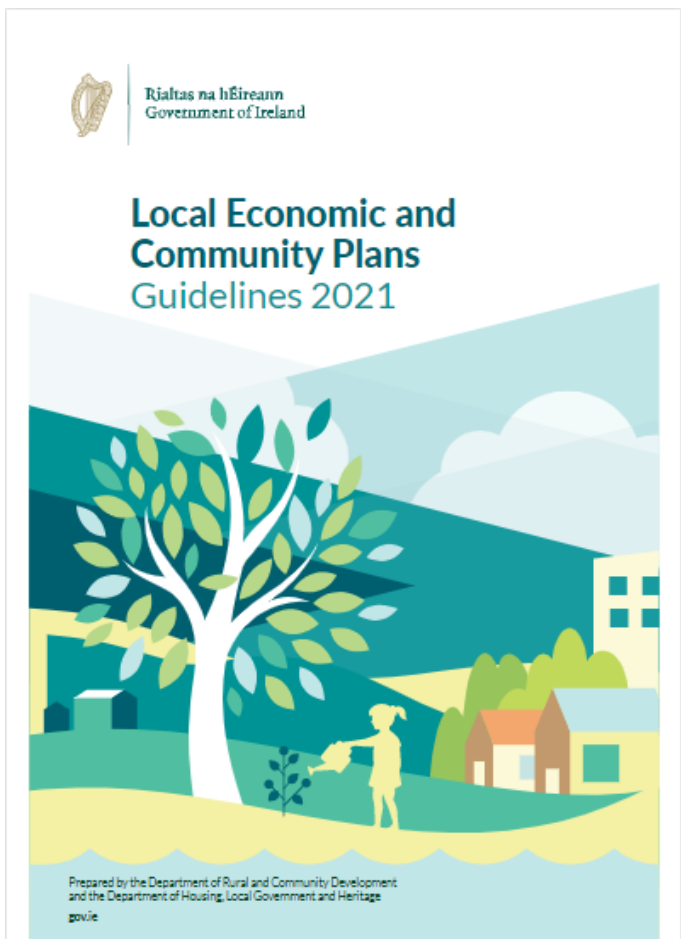




Comhairle Cathrach  
& Contae **Luimnigh**

**Limerick** City  
& County Council



# Local Economic and Community Plan (2022-2027)

## Economic Development & Enterprise SPC

10<sup>th</sup> October 2022

# LECP: Background

- Local Government Reform Act (2014)
- LECP purpose

*“to set out for a six-year period the objectives and actions needed to promote and support the economic development and the community development of the area, both by the local authority directly and in partnership with other economic and community development stakeholders”*
- LCDC – community development
- Economic SPC – economic development
- Guidelines (2021):
  - Some changes compared with first LECP (2016)

IRELAND PLANNING POLICY HEIRARCHY 2016+



# LECP: Two part process

## 1. Framework LECP (6 years)

- High Level Goals (HLGs)
- Sustainable Community Development Objectives (SCDOs)
- Sustainable Economic Development Objectives (SEDOs)
- Outcomes & metrics

## 2. Implementation Plans

- Actions, costs, resources
- Partners & role of each
- Timescales to complete
- Monitoring implementation & evaluation

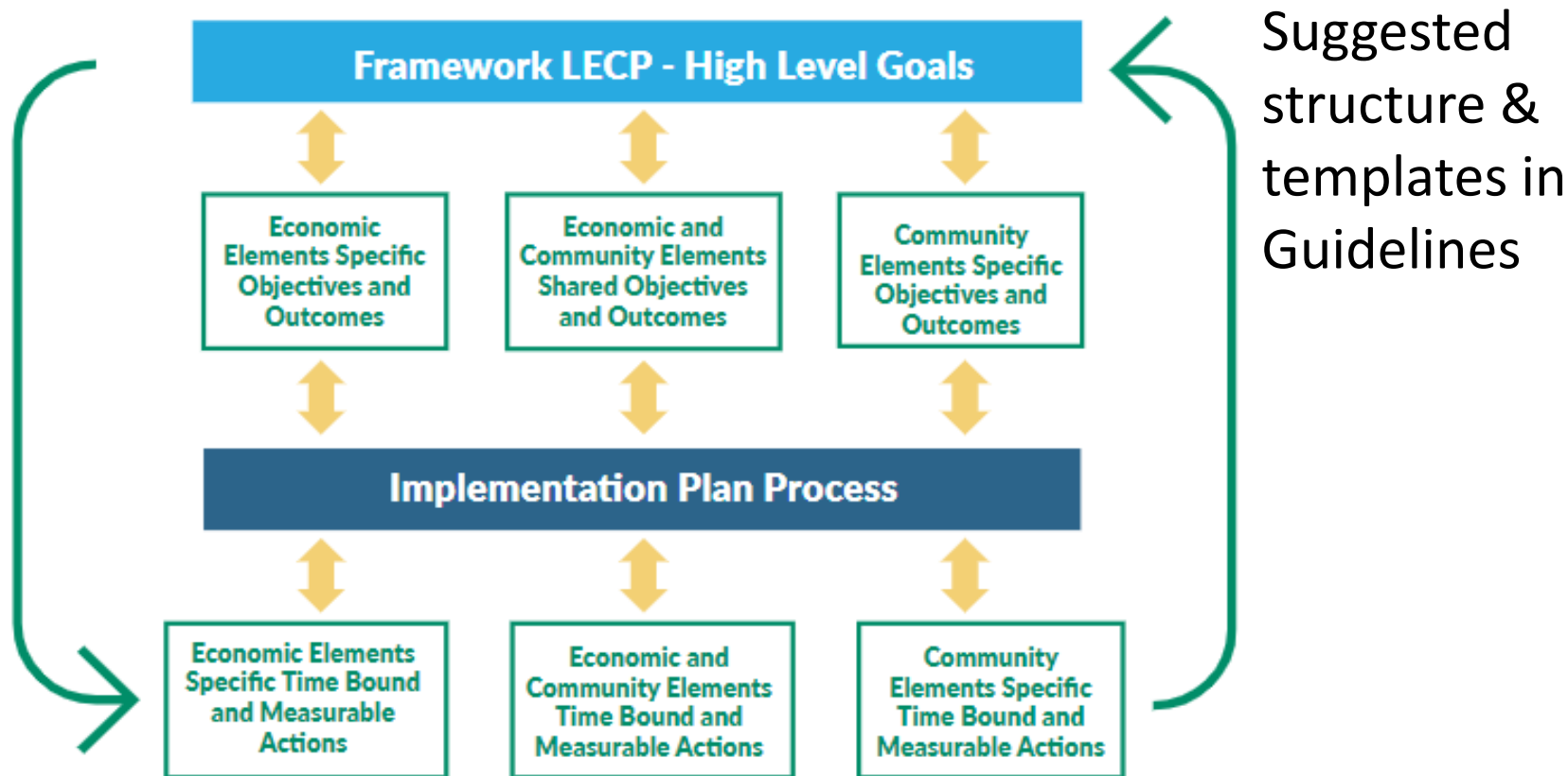
Figure 3





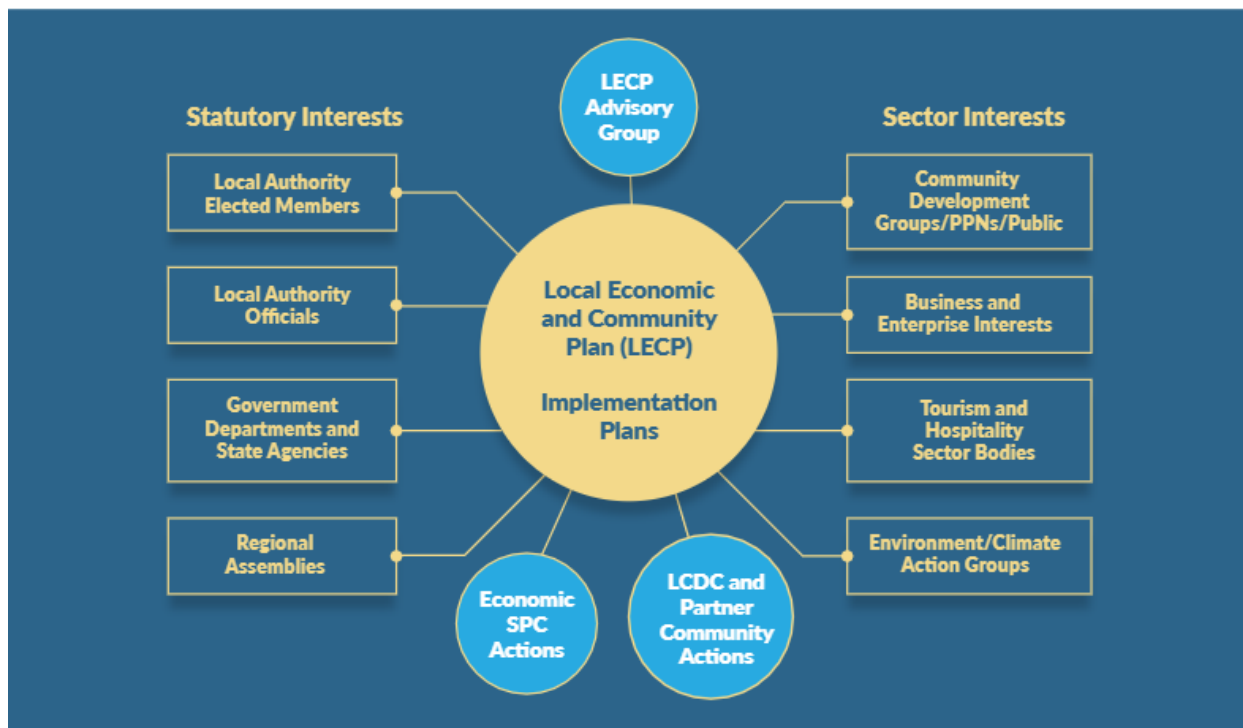
# LECP Framework & Structure

Figure 5



# Partners/Stakeholder

Figure 4



LECP Advisory Steering Group

- LCDC & Economic SPC

Local Authority – implementation & coordination

Other agencies

## Development Stages

Six stage process with role for:

- LCDC & Economic SPC
- Municipal Districts & Full Council
- Regional Assembly
- Minister (sign-off)

Public consultation process

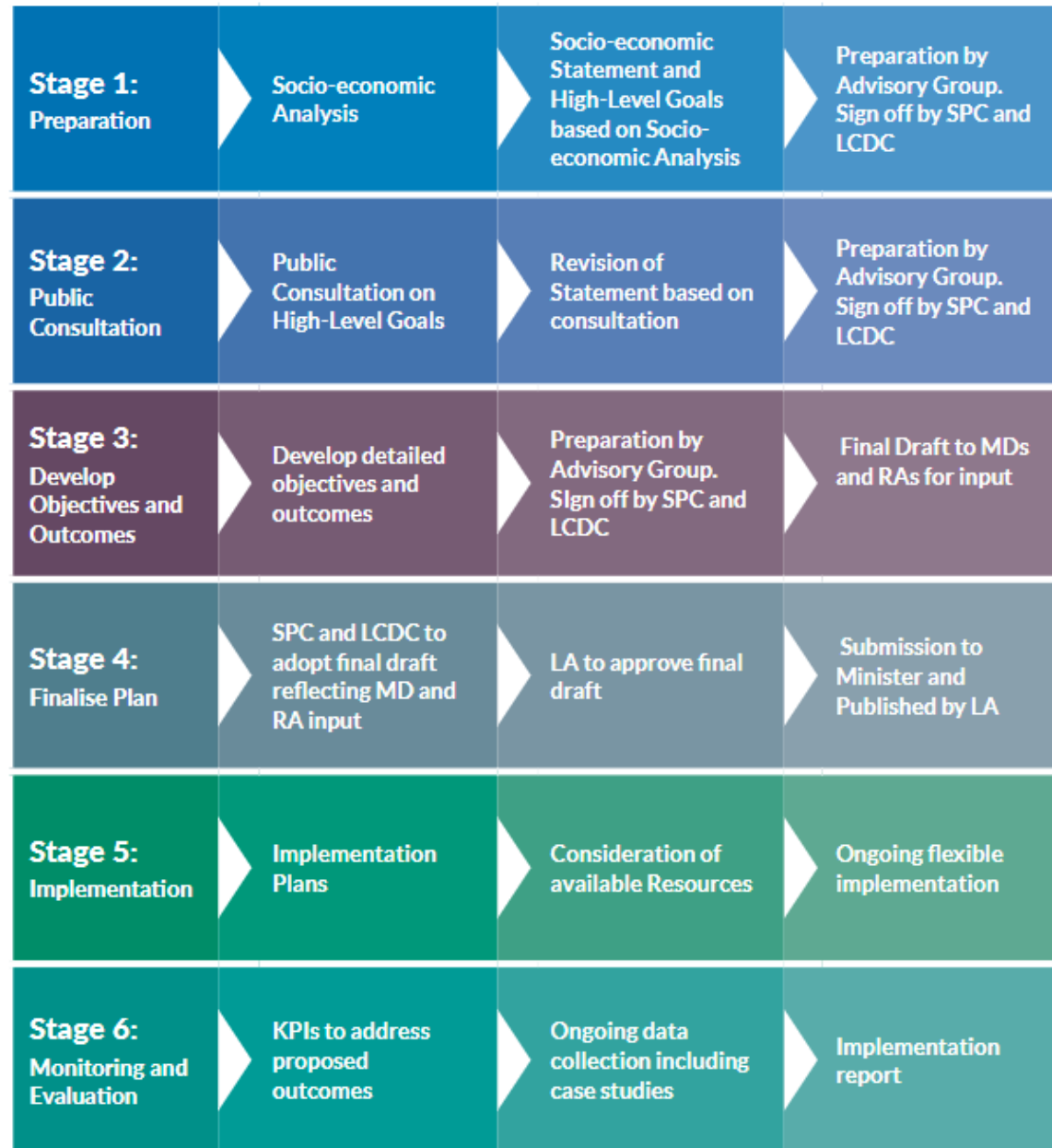
### Stages 1-4: Framework Plan

- Key task in 2022 and 2023
- Wide consultation & community development approach
- SEA / AA required

### Stages 5-6 Implementation

- Matching actions with resources
- KPIs - measuring effectiveness of implementation
- Lessons & publicity

Figure 6



# Progress & further information

- Advisory Steering Group
  - Set up & first meeting held
  - One meeting at each stage, 1-4
- LCDC / SPC
  - Sign-off at each stage
- Review of current LECP
  - SICAP, LEADER, Healthy Ireland, LRFIP;
  - Limerick 2030, Regional Enterprise Plan MW, LEO data
- Policy Review
- Limerick Development Plan (2022-28) – consultation process findings
- Draft Socio-economic Statement
  - Socio-economic analysis
  - Framework Vision & High Level Goals
  - SCDOs & SEDO
  - (*Indicative actions*)
- LCDC Support (page) - DRCD
- Thematic workshops in Q1 2022 / Q2
  1. Socio-economic analysis – overview & data sources (held in March 2022)
  2. Climate action / environment
  3. Community / social inclusion
  4. Economic / Infrastructure / Local Enterprise
  5. Drafting LECP
- Engagement of marginalised groups
- Data: county level profiles (2024)
- Further Information under “Local Government”
- <https://www.gov.ie/en/policy/d5adb8-community-supports/>

# Socio-economic analysis

- Evidence-base for the Vision, HLGs & Objectives
- Limerick City and County – close to national average on many indicators
- Variations within Limerick – city v. rural Limerick, within city, within rural & settlements
  1. Draft analysis – 23 headings
  2. Strengths, Constraints, Opportunities & Threats (SCOT) Analysis





	Heading		Heading
1	Population	13	Knowledge economy, R&D & Innovation Capacity
2	Ethnic / cultural diversity	14	Tourism
3	Educational attainment	15	Retail
4	Education provision & key indicators of performance	16	Cultural & creative industries
5	Social exclusion / deprivation	17	Food
6	Health & well-being	18	Manufacturing
7	Children & young people	19	Energy efficiency / renewables / green
8	Crime & Justice	20	Transport
9	Labour Market	21	ICT & Broadband
10	Daytime working population	22	Housing
11	Dereliction & vacancy	23	Local services & distance to everyday services
12	Enterprise		

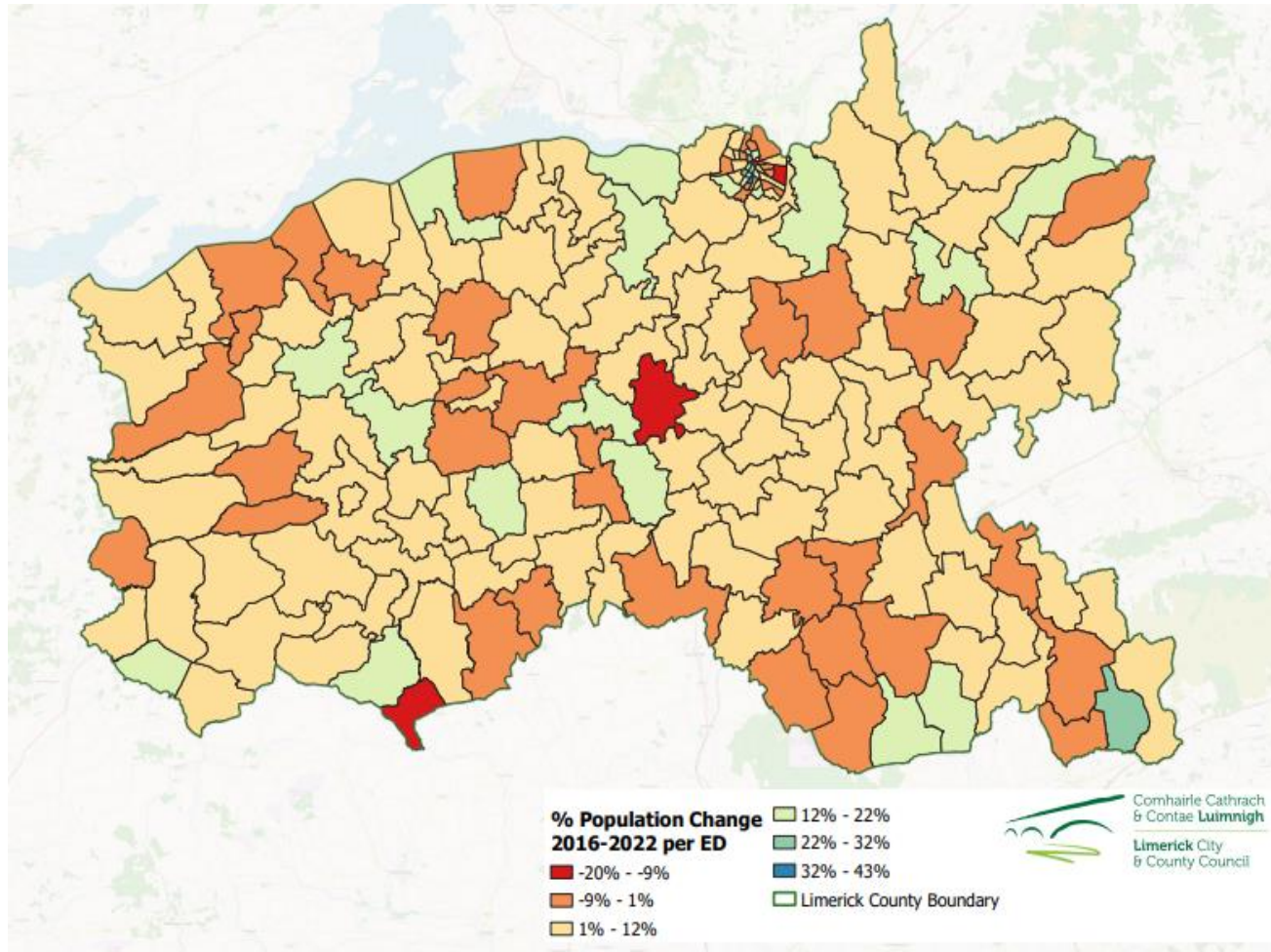
# Highlights from Socio-economic analysis

- Population growth – 5.4% 2016-2022 (national average 7.4%)
- Large no. of settlements & dispersed population
- 30% adult pop., 3<sup>rd</sup> level education
- School retention (93.6% v. 91.5% state average) - reduction in early school leaving
- Importance of 3<sup>rd</sup> level colleges – education, skills, enterprise, R&D
- Spatial inequalities – especially Limerick City
- Good health profile but health inequalities
- Low unemployment (state, MW) but structural unemployment problems .. “blackspots”
- Enterprise, investment, jobs (24,500 announced since 2013)
- Vacancy & dereliction (17.6% reduction in vacant dwellings 2016-22, 9% state average)
- Housing supply, demand & costs



# Population change 2016-2022

- Mixed picture
- Decline / large increases in parts of the city
- Growth in pop in rural areas including remote areas



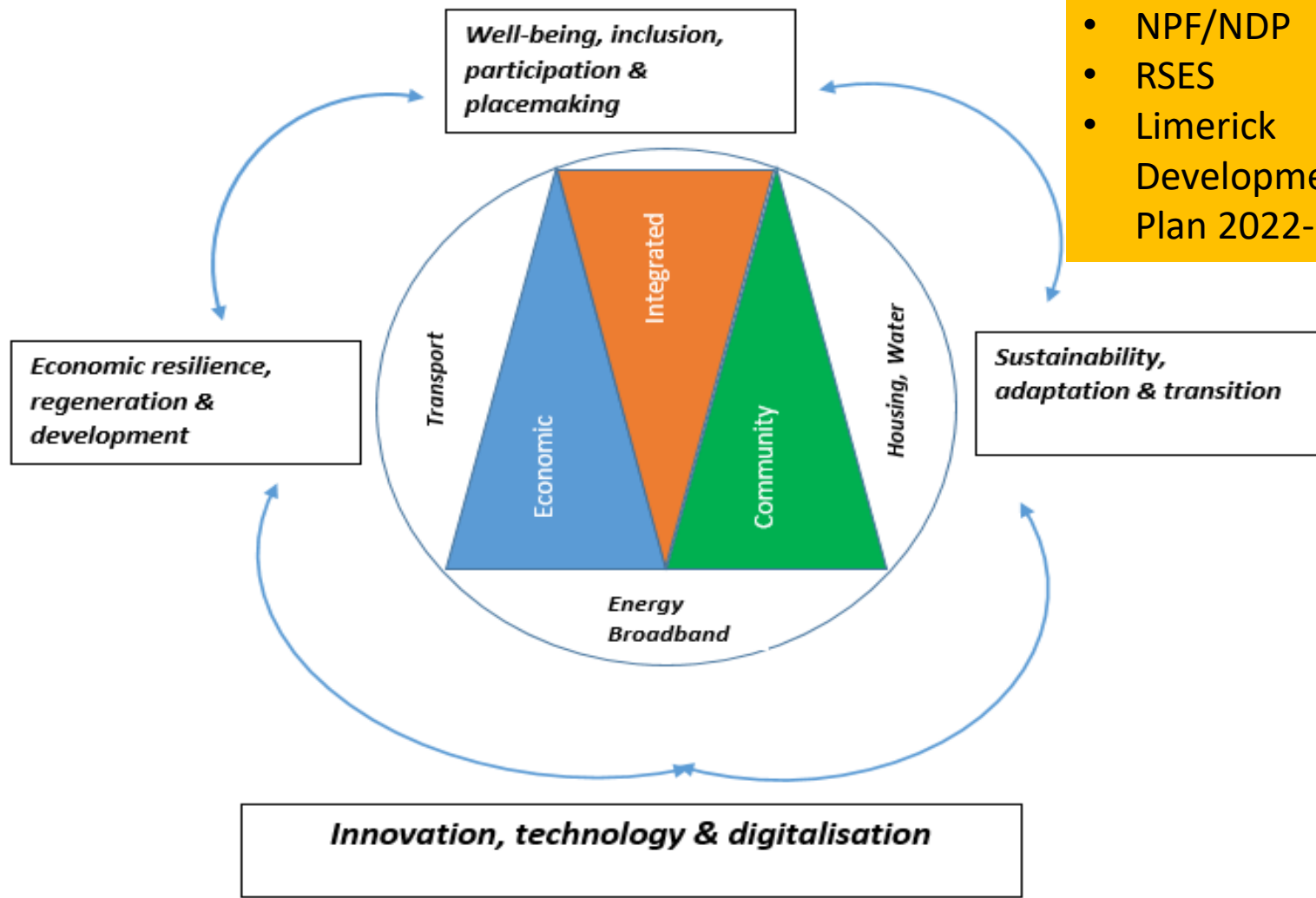
# High Level Goals

- **HLG1: People & Communities - Well-being, inclusion, participation & placemaking ...** urban and rural communities
- **HLG2: Environment & climate action – Sustainability, adaptation & transition. ..** transition in all forms ... education and skills, jobs, enterprise, investment ... energy
- **HLG3: Economic resilience, regeneration & development. ..** quality jobs ... jobs for people in economic exclusion .. investment .. talent, regeneration and development of urban areas and settlements ... compact growth
- **HLG4: Innovation, technology & digitalisation...** economy, society and communities .... make technologies and digital services accessible to all



Comhairle Cathrach  
& Contae **Luimnigh**

**Limerick** City  
& County Council



### Fit with:

- UN SDGs
- NPF/NDP
- RSES
- Limerick Development Plan 2022-28

## Development Stages

Six stage process with role for:

- LCDC & Economic SPC
- Municipal Districts & Full Council
- Regional Assembly
- Minister (sign-off)

Public consultation process

### Stages 1-4: Framework Plan

- Currently at stage 1
- Timetable:
  - S-E Statement to SPC & LCDC December meeting
  - Public consultation process – January 2023
  - Finalise Summer / Autumn 2023

Figure 6

