



Part 8 Presentation

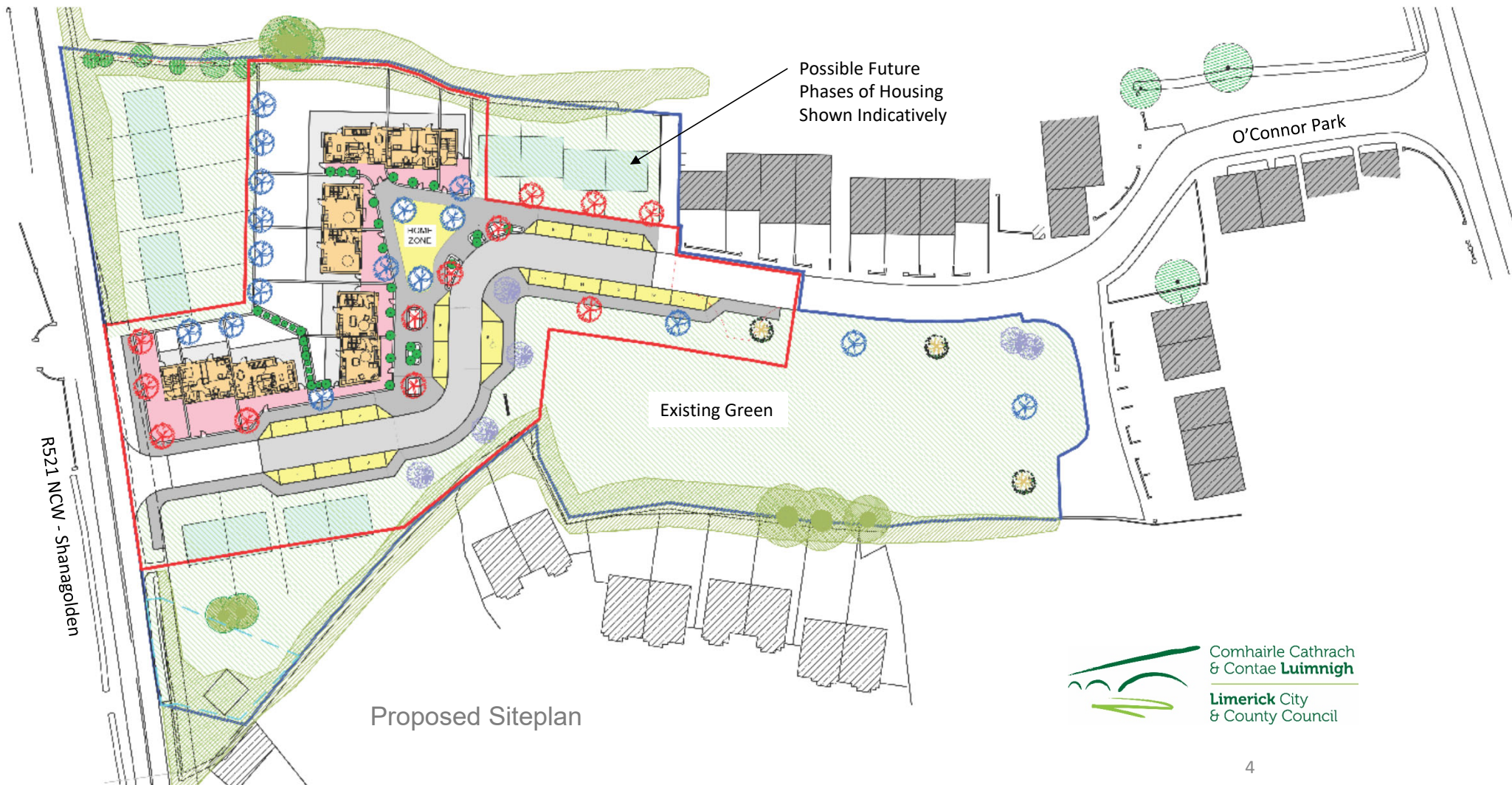
10 No. Social Housing Units – O'Connor Park, Ardagh, County Limerick



Aerial Image – Location of site to north of Ardagh Main Street



Aerial Image – Location of site to Ardagh Mainstreet



Unit Type	No. Units
One-Bed Duplex	4 No. Units
Two-Bed House	4 No. Units
Three-Bed House	2 No. Units
Total	10 No. Units



Unit mix based on demand from local housing waiting list



3D Image – Proposed Layout Showing Massing & Scale

Local Consultation	Concerns Raised by Local Residents and at Monthly Meeting	Response to Concerns Raised
Item No. 1	Vehicular traffic taking shortcut through O'Connor Park due to link	Traffic control measures introduced
Item No. 2	Acute demand for homes - housing need for local residents in the area	Providing ten new homes for local residents with potential for future development
Item No. 3	Existing traffic issues in estate (speeding)	Incorporated into design process and road safety audit
Item No. 4	Volume of traffic using proposed junction to R521	Traffic control measures introduced

Revised Siteplan

- Response to concerns raised at monthly meeting and local consultation;
- Existing hammer head junction retained and new hammer head junction proposed with traffic bollards;
- Vehicular link broken to prevent possibility of shortcut;
- Significant reduction in proposed vehicular traffic and related issues;
- Layout promotes pedestrian and cycle use of street and supports development of public open space;
- Proposed junction will only be used by local residents that are familiar with area; and,
- The scheme retains permeability and connectivity, ties-in with existing building line, green, homezone and new footpath to village core.



Proposed Siteplan – Rev. A

