

# Natural Capital Benefits of Actions for Pollinators



**Dr. Christine Doherty**

# Contents



- Policies & Legislation
- Green Infrastructure Plan
- Council's Pollinator Plan
- Don't Mow Let It Grow
- Natural Capital
- Carbon Savings
- Summary



**Greenspaces provide a range of additional benefits which are not monetised.**

# Policies & Legislation

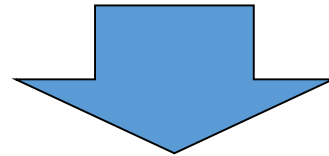
NI Biodiversity Strategy

Biodiversity Duty

Green Infrastructure

Nature Recovery Networks

All Ireland Pollinator Plan

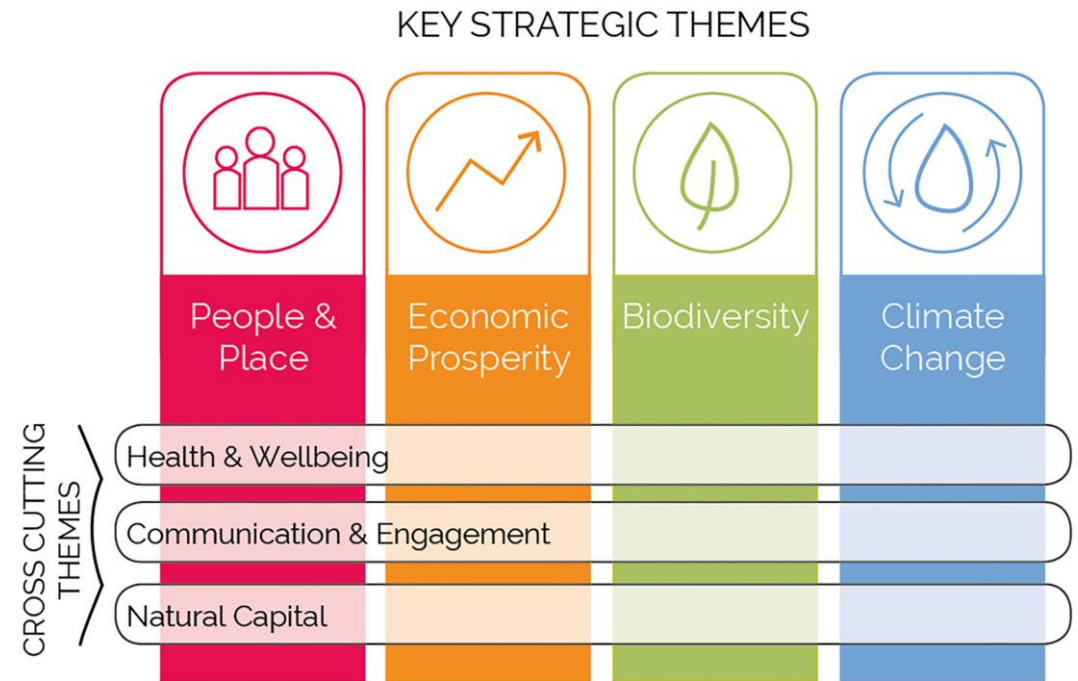


Nature Positive 2030  
Biodiversity (COP15) & Climate Change (COP26)

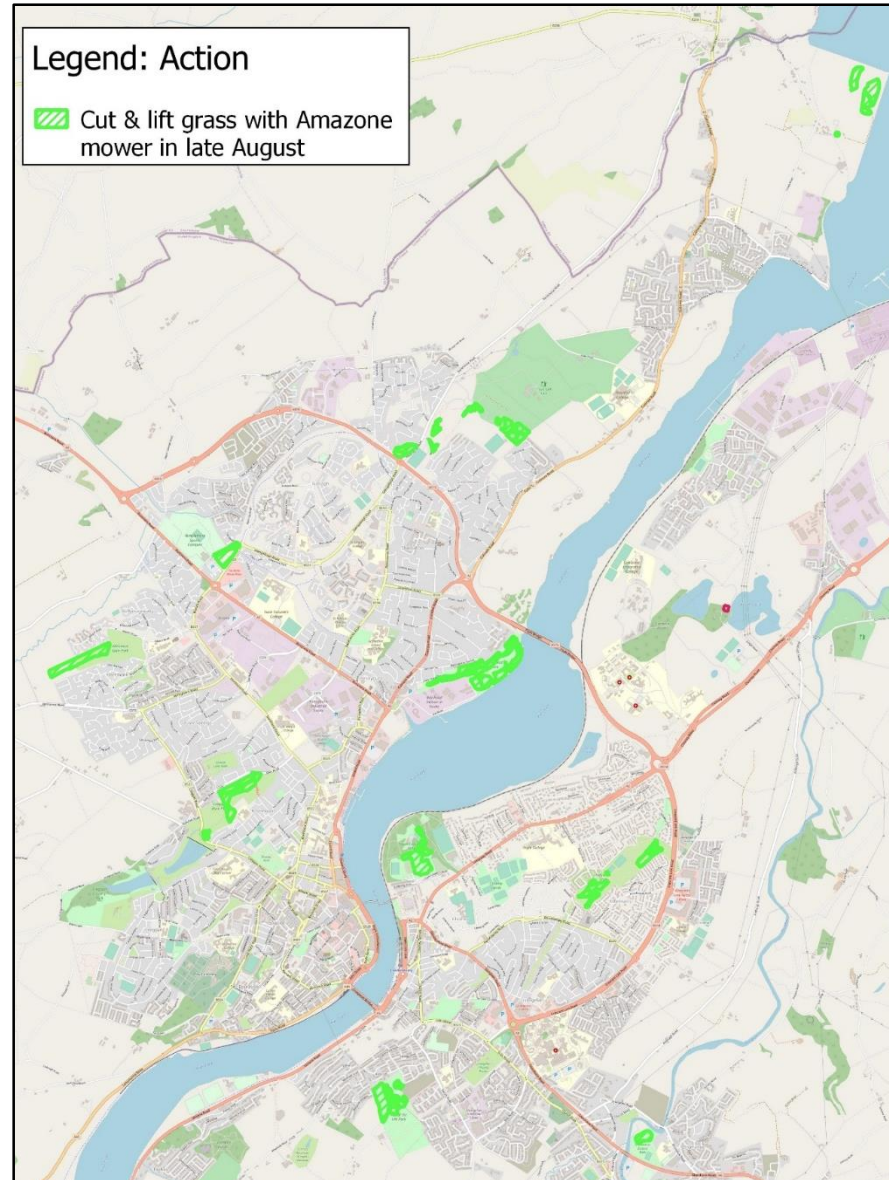
# Derry & Strabane Green Infrastructure Plan 2019 - 2032

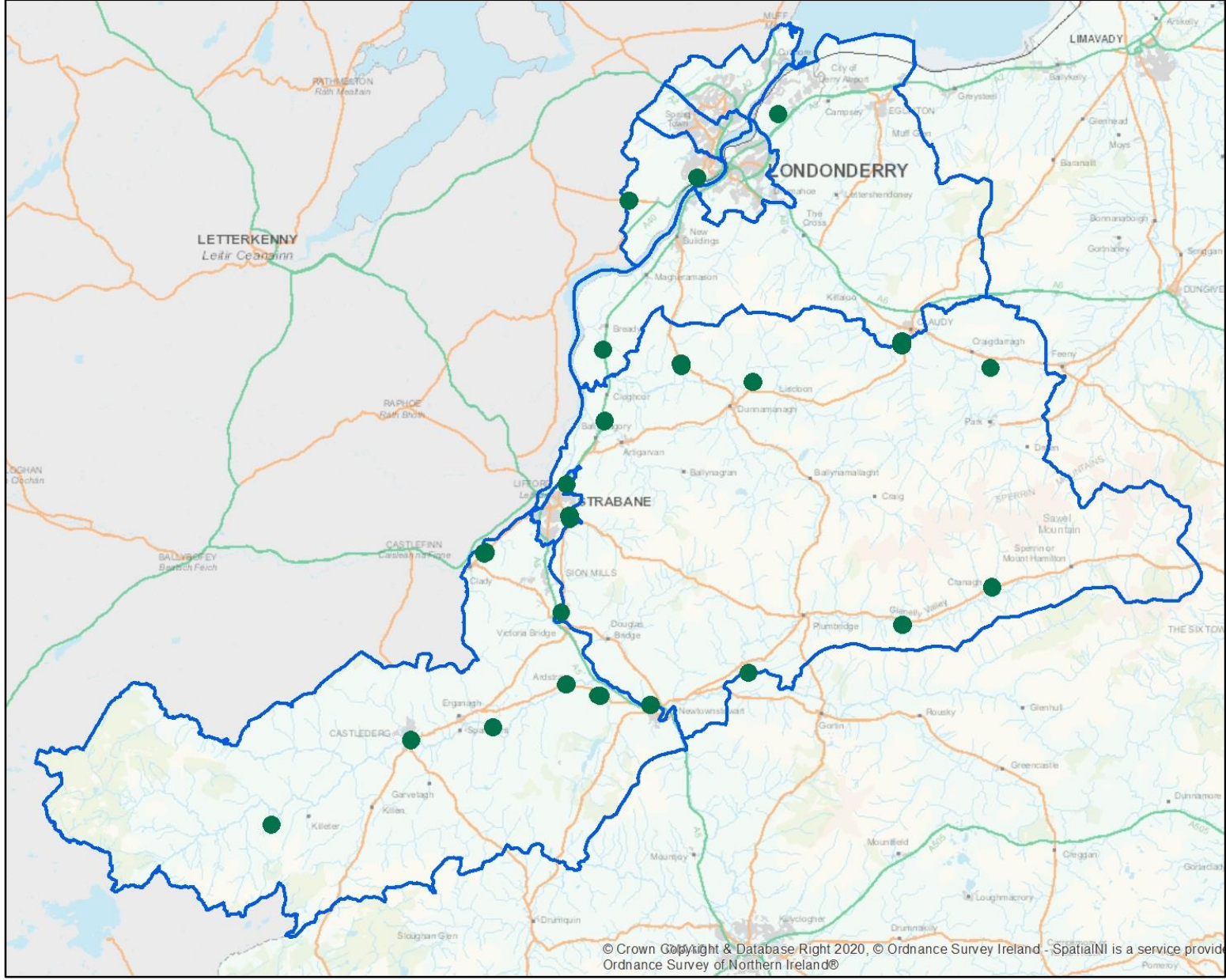
## Aims

1. Increase awareness, appreciation and use of Green Infrastructure
2. Integrate Green Infrastructure principles into policy and decision making
3. Protect, improve and increase Green Infrastructure through good design, planning and asset management
4. Deliver Green Infrastructure's full potential for people and place, developing economic prosperity, biodiversity and responding to climate change.



# Council's Pollinator Plan





# Don't Mow Let It Grow



**DON'T MOW (YET)**

This grassland is being managed by Council, to deliver a new approach in public grassland management under Council's Green Infrastructure Plan, to help improve biodiversity.

Please clean up after your dog.

Please do not litter.

[derrystrabane.com/biodiversity](http://derrystrabane.com/biodiversity)

**DON'T MOW let it grow**

In partnership with the All-Ireland Pollinator Plan

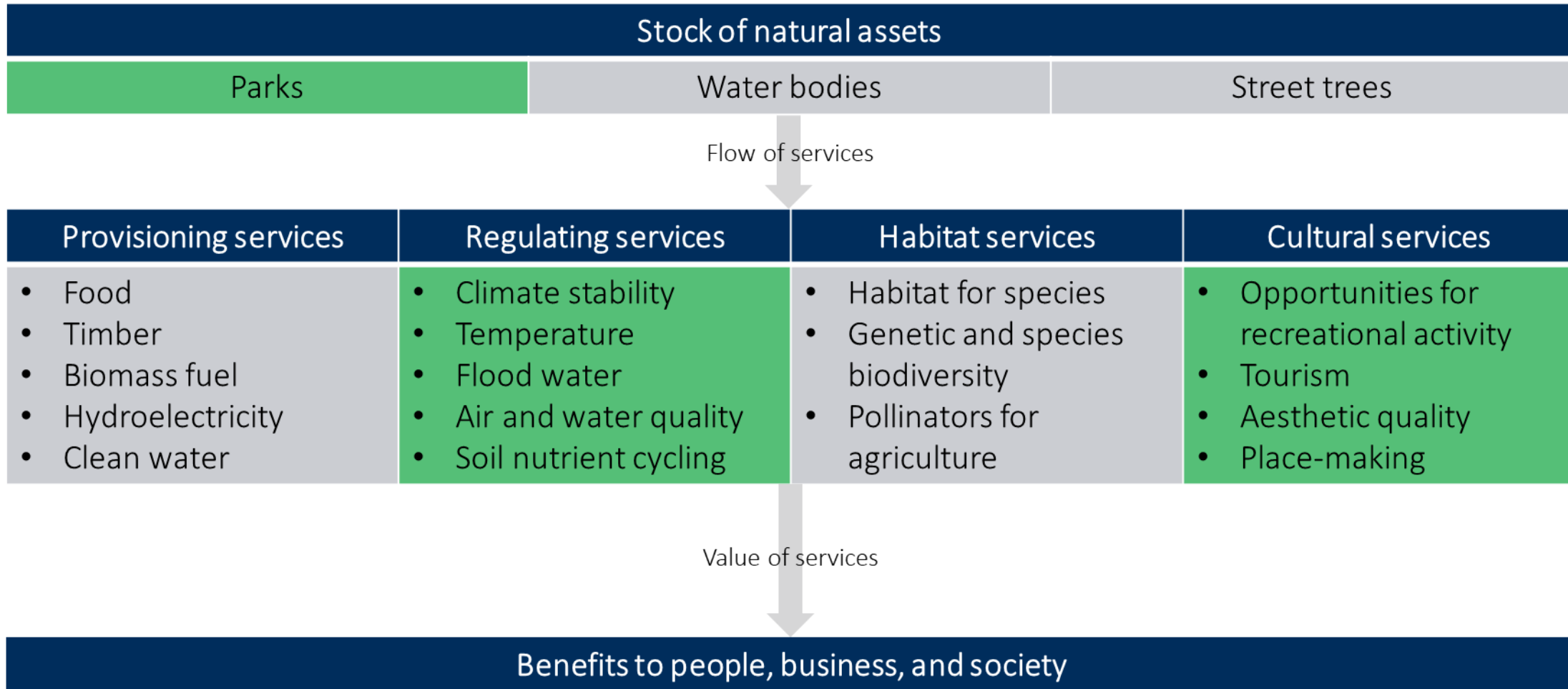
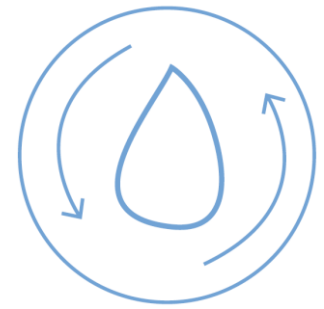


# Don't Mow Let It Grow

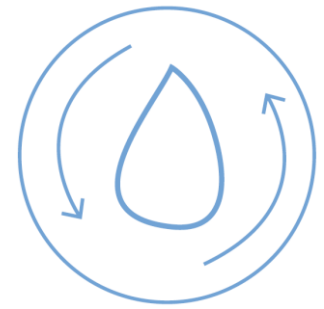




# Natural Capital



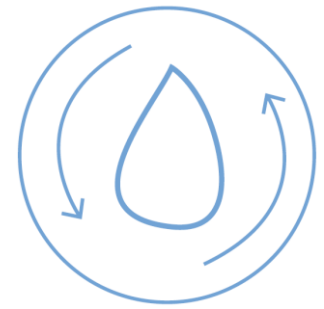
# Carbon savings



- A reduction in grass cutting from ~15 to one / two cuts a year results in saving 2T of carbon in 2021. This helps Council to reduce the carbon footprint of our operations.
- At Bay Road Park Local Nature Reserve, we saved 197 kg CO<sub>2</sub> in 2020 (2L petrol x 3.3 ha x 2.3 kg CO<sub>2</sub> x 13 less cuts) (Defra, 2019).



# Summary



- A landscape scale approach to grassland management, can create a nature recovery network across the District & region for pollinators.
- Reverse the decline in pollinators, by creating space for people & wildlife.
- Provide additional ecosystem services benefits, for example, pollination & health & well-being services.
- Contribute to delivering national & international policies on biodiversity loss & climate change.
- Reduce carbon footprint of operations by reducing grass cutting.

For further information visit:  
[www.derrystrabane.com/biodiversity](http://www.derrystrabane.com/biodiversity)

