

# Limerick Division - Joint Policing Committee

02/10/2020

*Lisa Collins, Senior Intelligence Analyst*





# JPC Objectives

## Provide a brief statistical overview of current position as of 01/10/2020:

1. Covid -19 Related Activity and Domestic Abuse
2. Property Crime at a Divisional Level (broken down by District)
  - Additional attention afforded to Burglary
3. Crime Against the Person at a Divisional Level (broken down by District)
  - Additional attention afforded to Assault.
4. Proactive Policing Measure
  - Includes Possession of Drugs, Sale of Drugs, Firearms and Offensive Weapons
  - Drugs Values Seized YTD
5. Traffic
  - Fatalities/Serious Injuries figures YTD
  - Drink and Drug Driving Offences
  - LifeSaver Offences

***All information is based upon operational data from the PULSE System as was available on the 01/10/2020 and is liable to change. Crime Counting rules are applied, unless otherwise stated. Incident counts are based on date reported.***

## Covid 19 Related Activity

As of the 01/10/2020:

**23**

Covid 19 Infectious Diseases (Powers under the Health Act, 1947)

## Domestic Abuse Incidents

From 1<sup>st</sup> March to 31<sup>st</sup> August

**Division is  
+12%**

includes

- Breach of Interim Barring Order
- Breach of Protection Order
- Breach of Barring Order
- Breach of Safety Order
- Domestic Dispute – No Offence Disclosed
- Breach of Emergency Barring Order; and
- Any incident with Domestic M.O.

*All information is based upon operational data from the PULSE System as was available on the 01/10/2020 and is liable to change. Incident counts are based on date reported.*



**Property Crime:**  
YTD the Division is **down 12%**  
(2,771 to 2,443)

**HS**  
**-10%**  
(1,690 to 1,517)

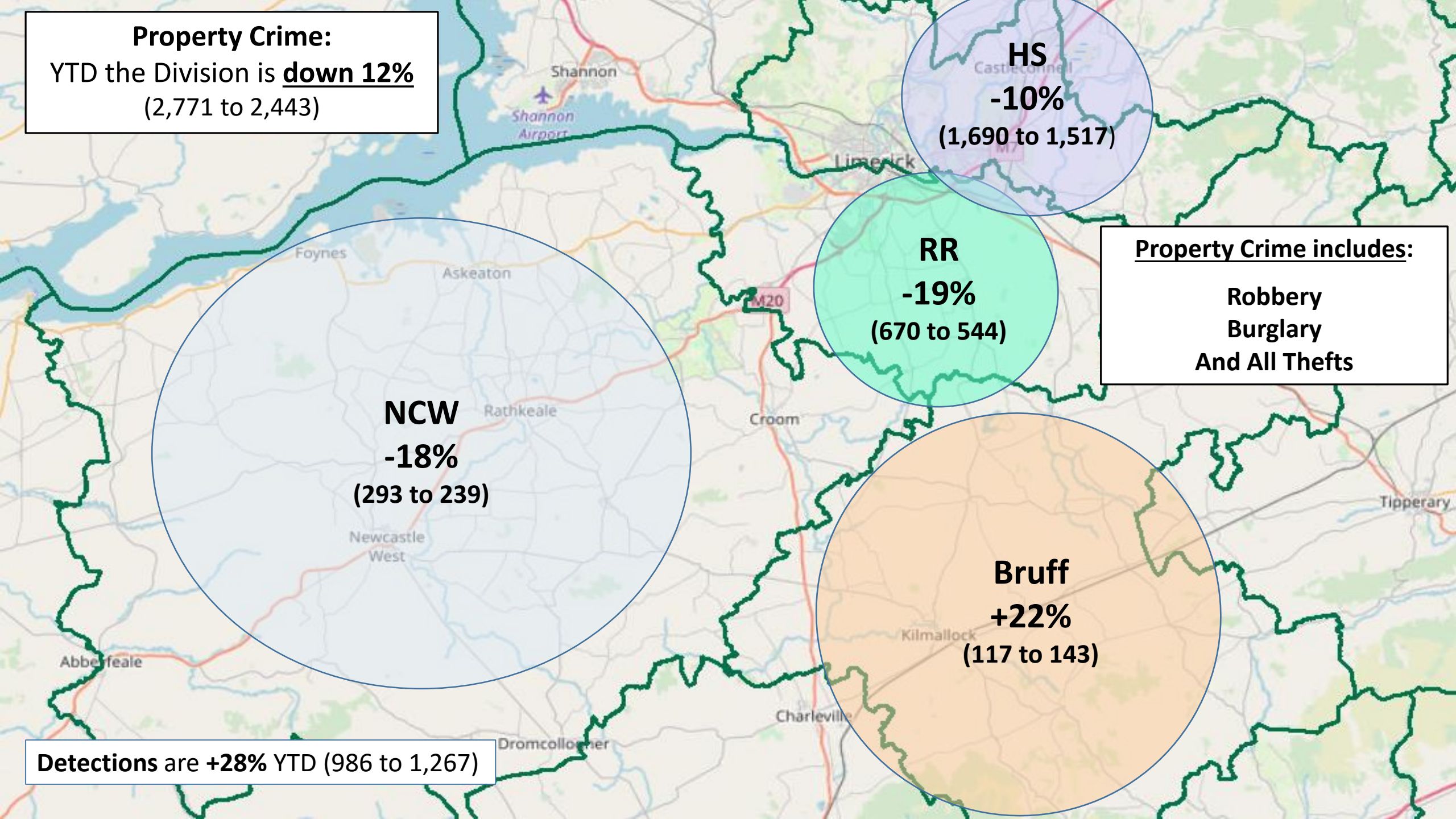
**Property Crime includes:**  
**Robbery**  
**Burglary**  
**And All Thefts**

**RR**  
**-19%**  
(670 to 544)

**NCW**  
**-18%**  
(293 to 239)

**Bruff**  
**+22%**  
(117 to 143)

**Detections are +28% YTD (986 to 1,267)**





**Non Aggravated Burglary: down 23% YTD**  
(567 to 438)

Residential Burglary is **-25%** YTD  
Non Residential Burglary is **-17%** YTD

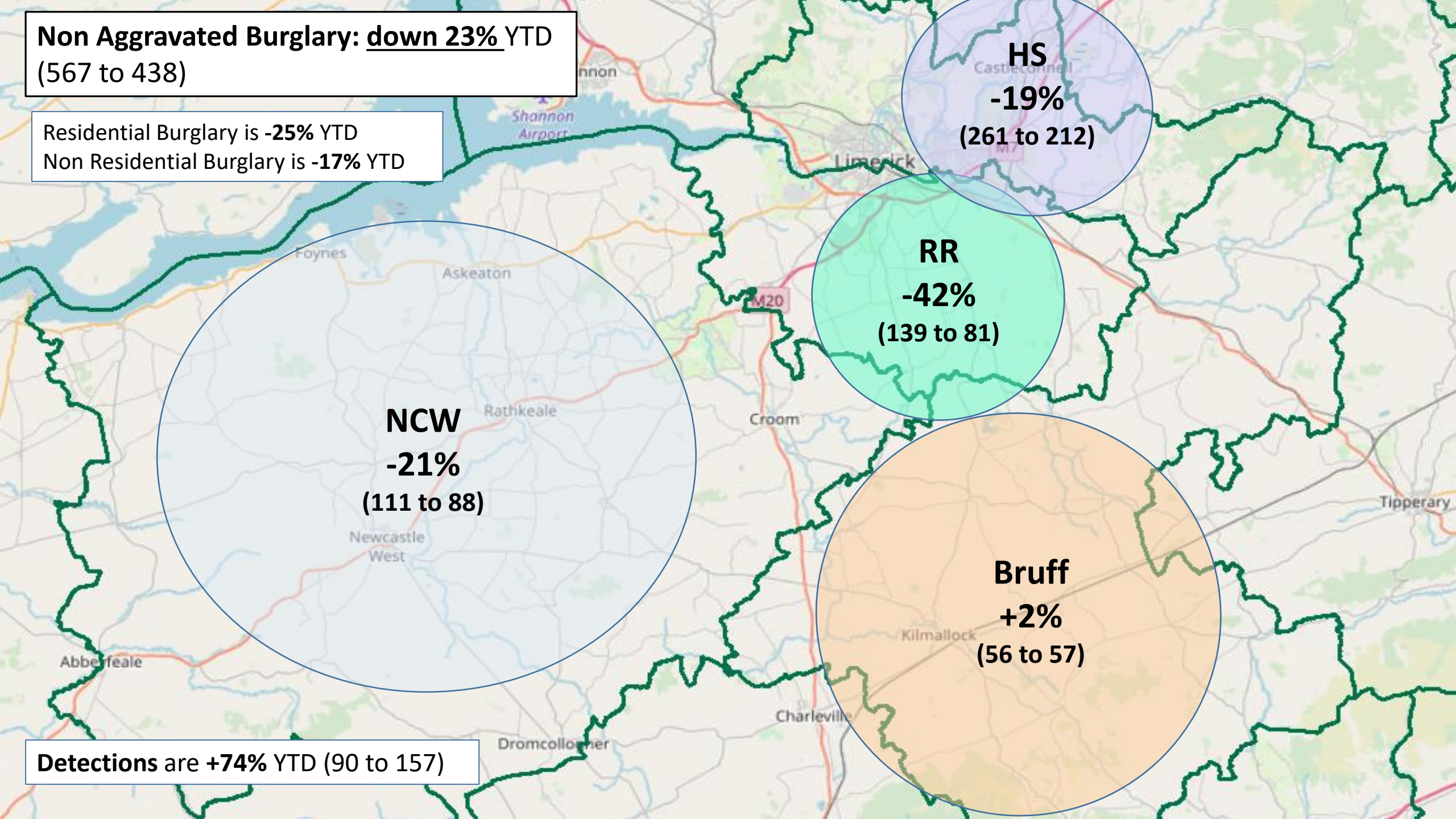
**HS**  
**-19%**  
(261 to 212)

**RR**  
**-42%**  
(139 to 81)

**NCW**  
**-21%**  
(111 to 88)

**Bruff**  
**+2%**  
(56 to 57)

**Detections are +74%** YTD (90 to 157)





**Crimes Against the Person:  
down 16% YTD (747 to 628)**

**HS**  
**-17%**  
**(371 to 308)**

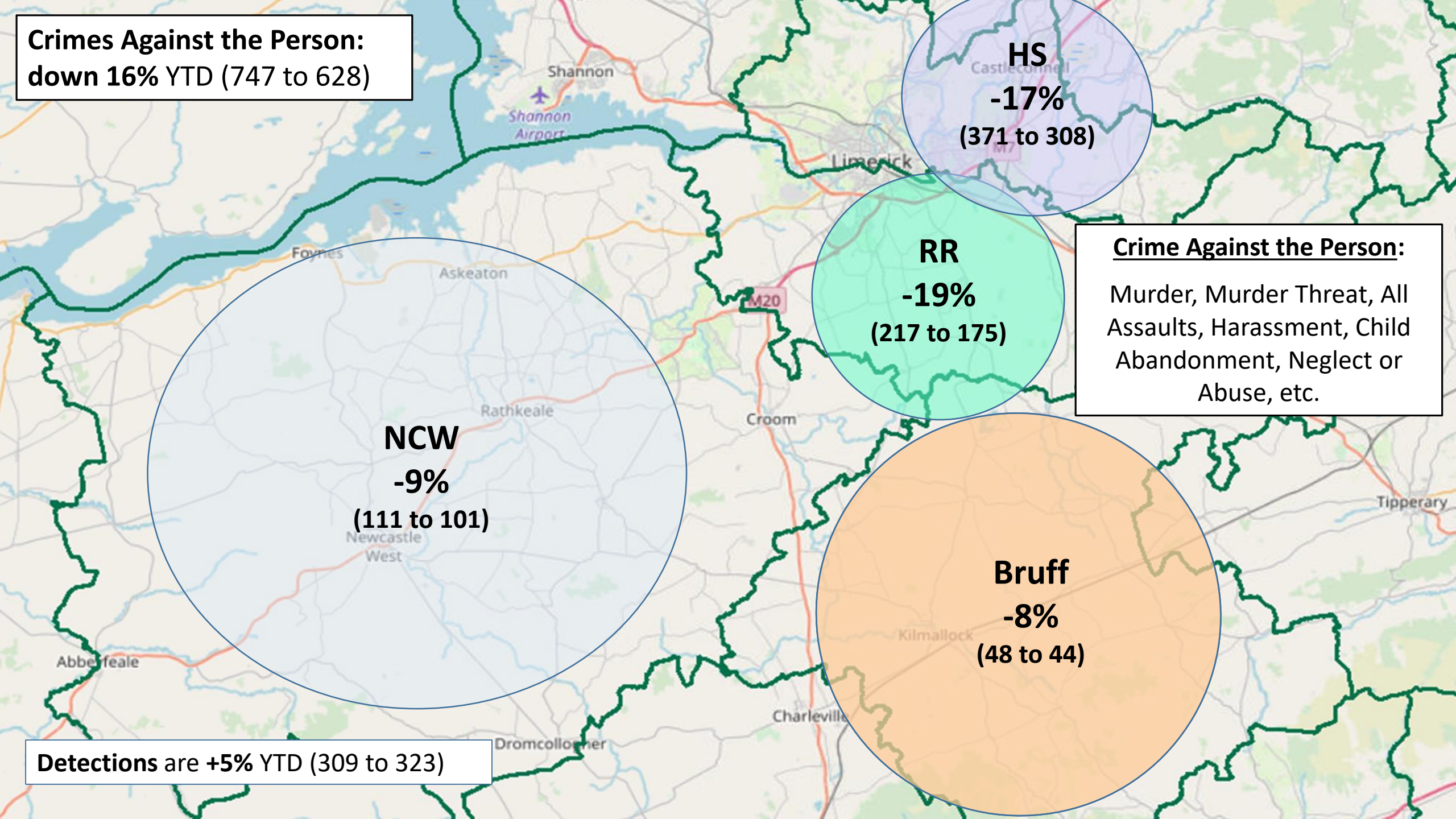
**RR**  
**-19%**  
**(217 to 175)**

**Crime Against the Person:**  
Murder, Murder Threat, All Assaults, Harassment, Child Abandonment, Neglect or Abuse, etc.

**NCW**  
**-9%**  
**(111 to 101)**

**Bruff**  
**-8%**  
**(48 to 44)**

**Detections are +5% YTD (309 to 323)**





**Overall Assaults: down 21%**  
(572 to 451)

**Assaults Causing Harm: -22% YTD** (176 to 137)  
**Minor Assaults : -21% YTD** (396 to 314)

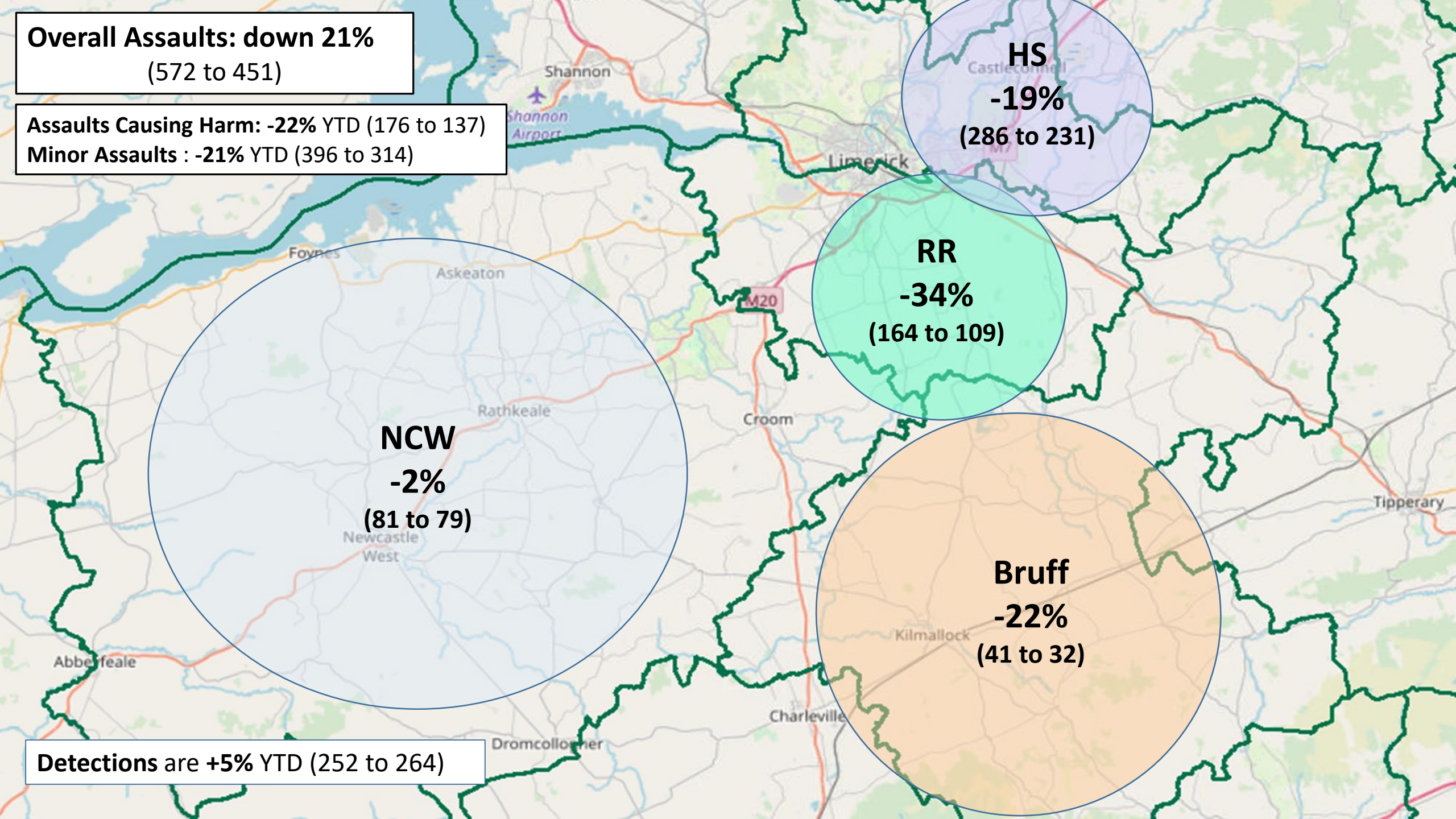
**HS**  
**-19%**  
(286 to 231)

**RR**  
**-34%**  
(164 to 109)

**NCW**  
**-2%**  
(81 to 79)

**Bruff**  
**-22%**  
(41 to 32)

**Detections are +5% YTD** (252 to 264)





**Proactive Policing Measures**

**Possession of Drugs for Personal Use**

Up 2% YTD  
(469 to 478)

**Possession of Drugs for Sale/Supply**

Up 46% YTD  
(120 to 175)

**Possession of Firearm**

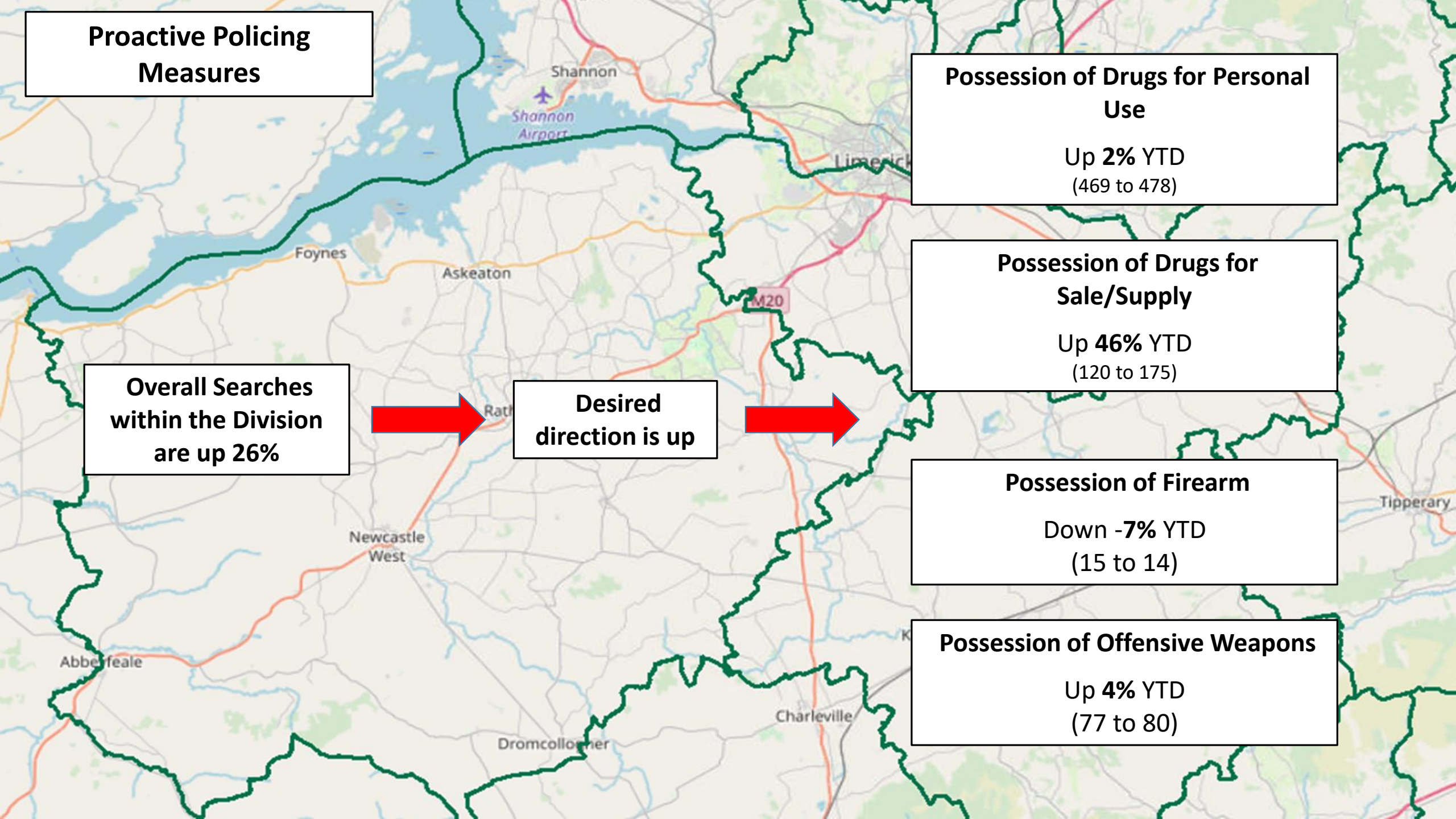
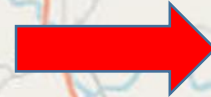
Down -7% YTD  
(15 to 14)

**Possession of Offensive Weapons**

Up 4% YTD  
(77 to 80)

**Overall Searches within the Division are up 26%**

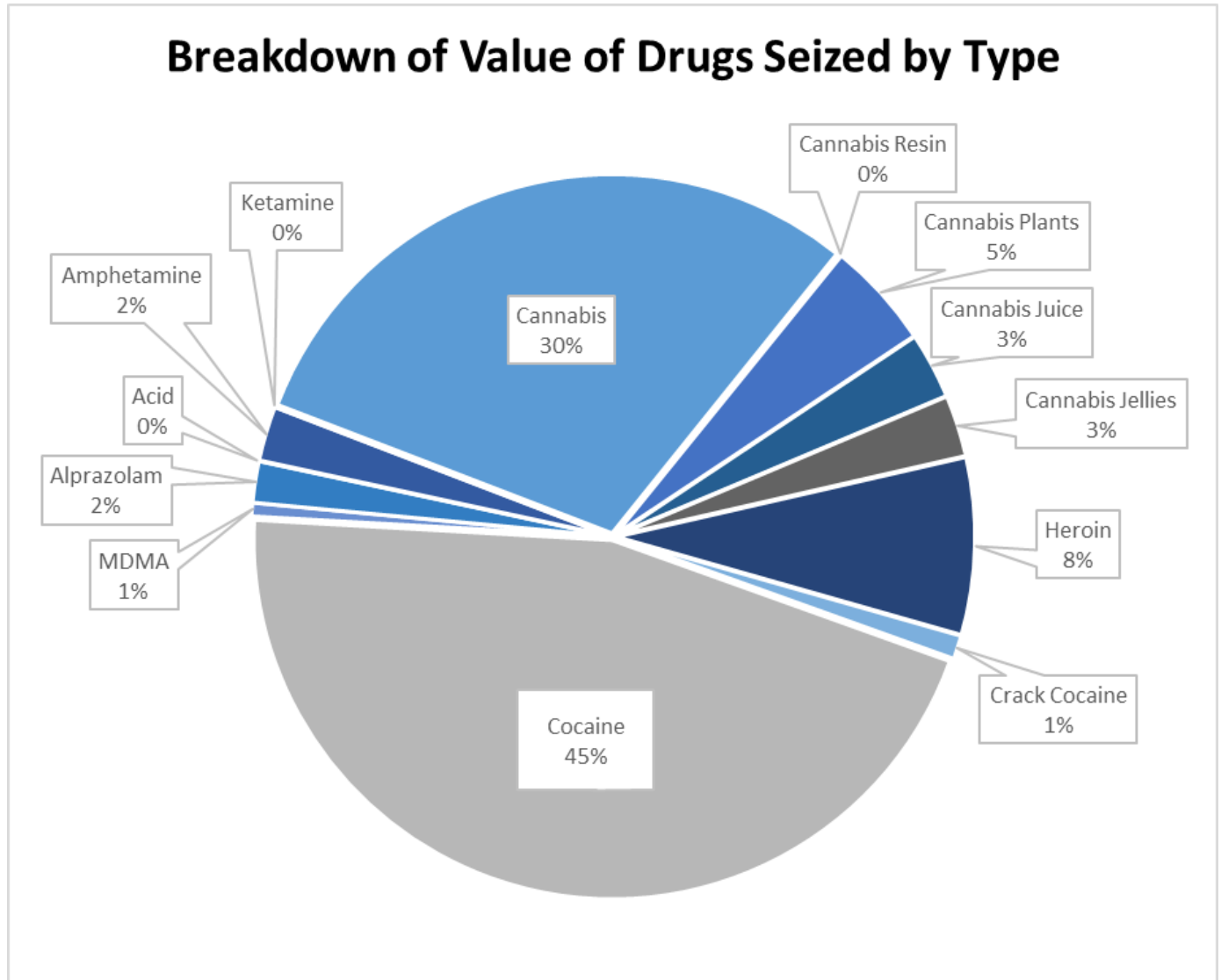
**Desired direction is up**





# Drugs Seizures – January to September 2020

Section 26 Warrants =	293
<b>Total Value of Drugs Seized</b>	<b>€ 1,639,434</b>
<b>Cannabis</b>	<b>€ 491,115</b>
<b>Cannabis Resin</b>	<b>€ 905</b>
<b>Cannabis Plants</b>	<b>€ 79,200</b>
<b>Cannabis Juice</b>	<b>€ 48,900</b>
<b>Cannabis Jellies</b>	<b>€ 45,420</b>
<b>Heroin</b>	<b>€ 130,795</b>
<b>Crack Cocaine</b>	<b>€ 17,520</b>
<b>Cocaine</b>	<b>€ 744,695</b>
<b>MDMA</b>	<b>€ 9,810</b>
<b>Alprazolam</b>	<b>€ 30,394</b>
<b>Acid</b>	<b>€ 350</b>
<b>Amphetamine</b>	<b>€ 40,250</b>
<b>Ketamine</b>	<b>€ 80</b>
<b>Cash Seized</b>	<b>€ 263,163</b>



*Figures provided by Sergeant Mick Dunne, Divisional Drugs Unit, Henry Street Garda Station.*



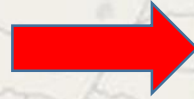
## Traffic

**Fatal Collisions: 6** in 2020 YTD (+20%)

**Serious Injury Collision: 28** in 2020 YTD (-26%)

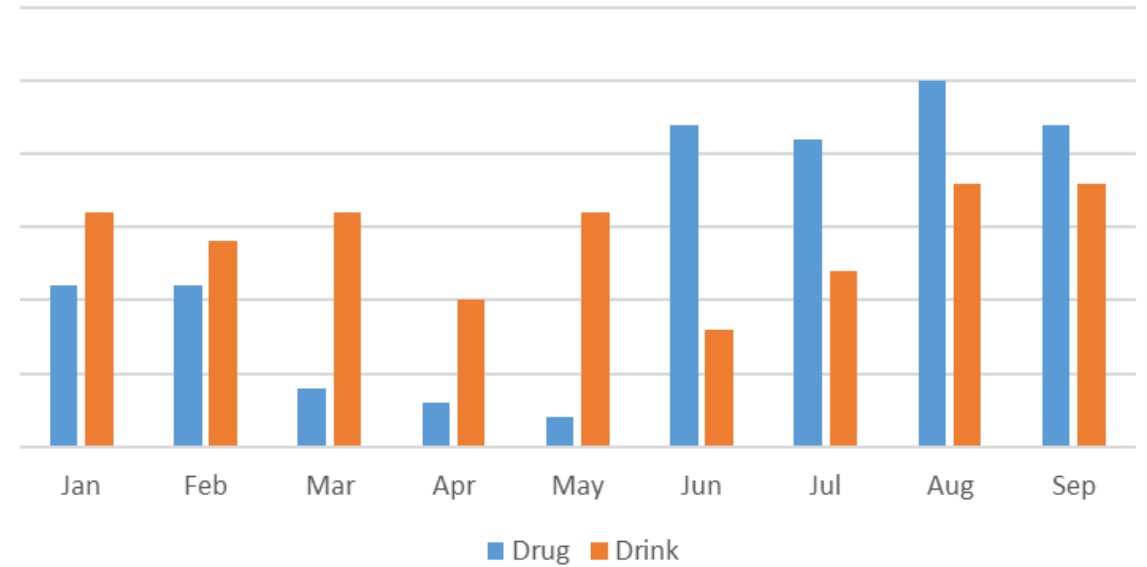
There have been **1,817 MIT** Checkpoints conducted in the Division – down 47% (3,401 in 2019)

**249 Driving While Intoxicated Offences.** (up 12% YTD)



Including **121 Drug Driving Offences** (up 128% YTD)

## Drug Driving -V- Drink Driving 2020



Our most recent data regarding **LifeSaver Offences** shows the following Jan to July Trends



**-62%**  
(1,469 to 561)



**-59%**  
(953 to 386)



**-28%**  
(3,188 to 2,289)





# An Garda Síochána

Policing Plan – University of Limerick  
Start of Academic Year 20/21





# Overview



- Approximately 16,500 students attend University of Limerick
- Annual Policing Plan compiled for “Fresher's Week”
- Planning for the return of students this year commenced in July 2020. Meetings between An Garda Síochána and the University of Limerick
- In addition consultation with Landlords, Residents of Castletroy and UL Student Union.





# Policing Operation



- AGS and UL working together in a collaborative way with Community Safety and Student Welfare the primary focus of the operation.
- Beat Patrols with Senior UL Management
- Four E's – Engage, Explain, Encourage, Enforce
- Public Order, Intoxication Offences, House Parties.



# Policing Operation



## Week 1 Statistics

- 35 House Parties (in excess of 30 people)
- 70 Tickets Issued (45 Alcohol consumption and 25 Parking Offences)
- 5 Public Order / Trespass arrests (2 charged, 3 caution)
- 3 Drug Seizures
- 52 Proactive Patrols
- 30 ASBO warning notices issued