



Comhairle Cathrach
& Contae **Luimnigh**

Limerick City
& County Council

New Build Incremental Purchase Scheme at Woodfield Manor Newcastle West

3-bedroom homes available (four house-types)

House Type A:	3 bed Semi-Detached	117m ²
House Type B:	3 bed Semi-Detached	129m ²
House Type C:	3 bed End Terrace	116m ²
House Type D:	3 bed Mid Terrace	116m ²

3 bed homes are currently under construction and will be completed by June 2022.

Beautiful spacious homes nestled just 2km from Newcastle West town-centre.

Set in a well-established and well-serviced area, the new 3 bed homes available benefit from countryside surroundings with plenty of activities nearby.

Every 3 bedroom house is finished to a high standard:

- Low maintenance, high quality external finishes.
- Spacious private gardens.
- A2 BER rating.
- High levels of roof, wall and floor insulation.

Purchase price depends on house type and income band = €96,502.18 – €157,728.28

LOCAL AUTHORITY HOME LOAN AVAILABLE





Comhairle Cathrach
& Contae **Luimnigh**

Limerick City
& County Council

KEY PHOTOMONTAGES



ATLANTIC EDGE

LIMERICK
EUROPEAN EMBRACE

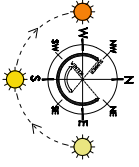


Comhairle Cathrach
& Contae **Luimnigh**

Limerick City
& County Council

SITE LAYOUT PLAN

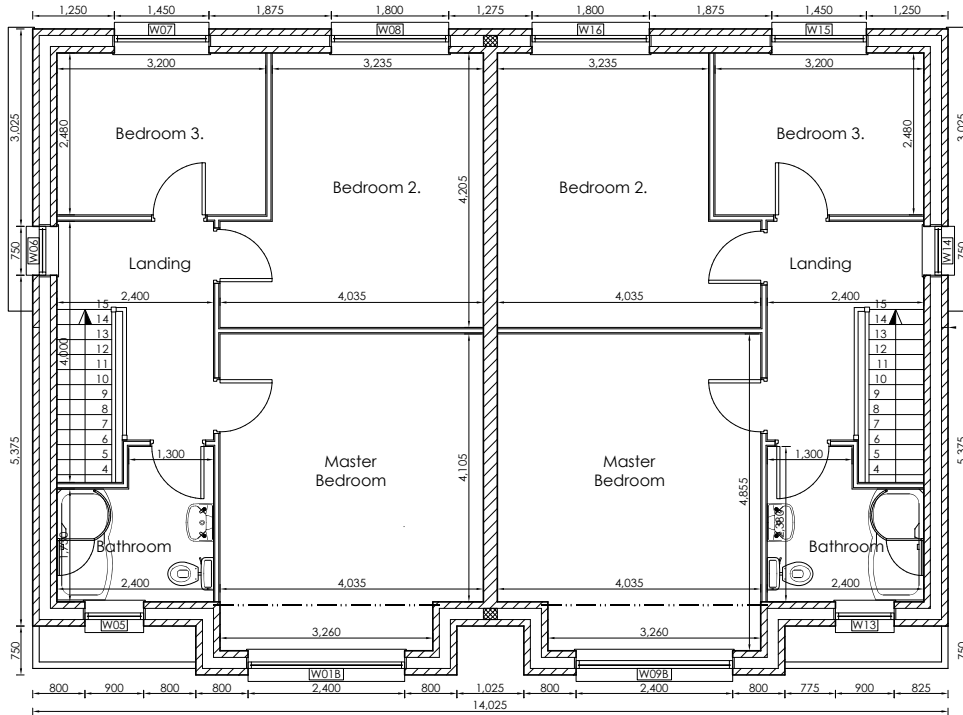
Units available for the New Build Incremental Purchase Scheme are outlined in a dashed red line



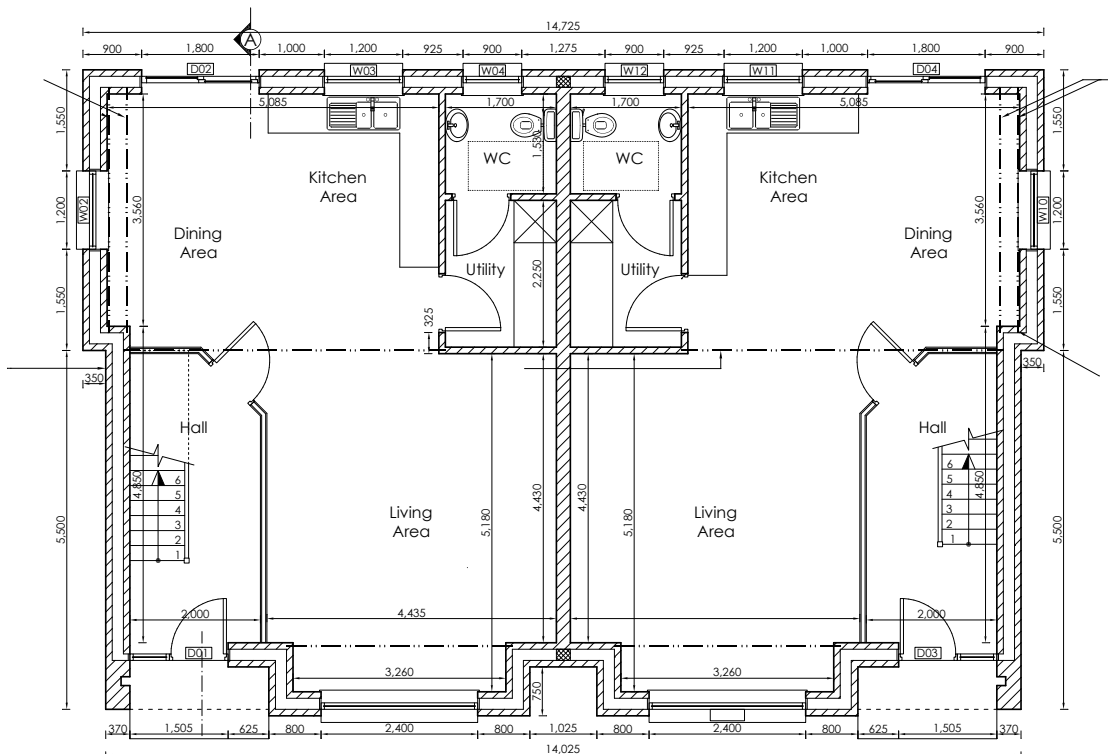


TYPICAL 3 BEDROOM SEMI-DETACHED LAYOUT

First Floor



Ground Floor



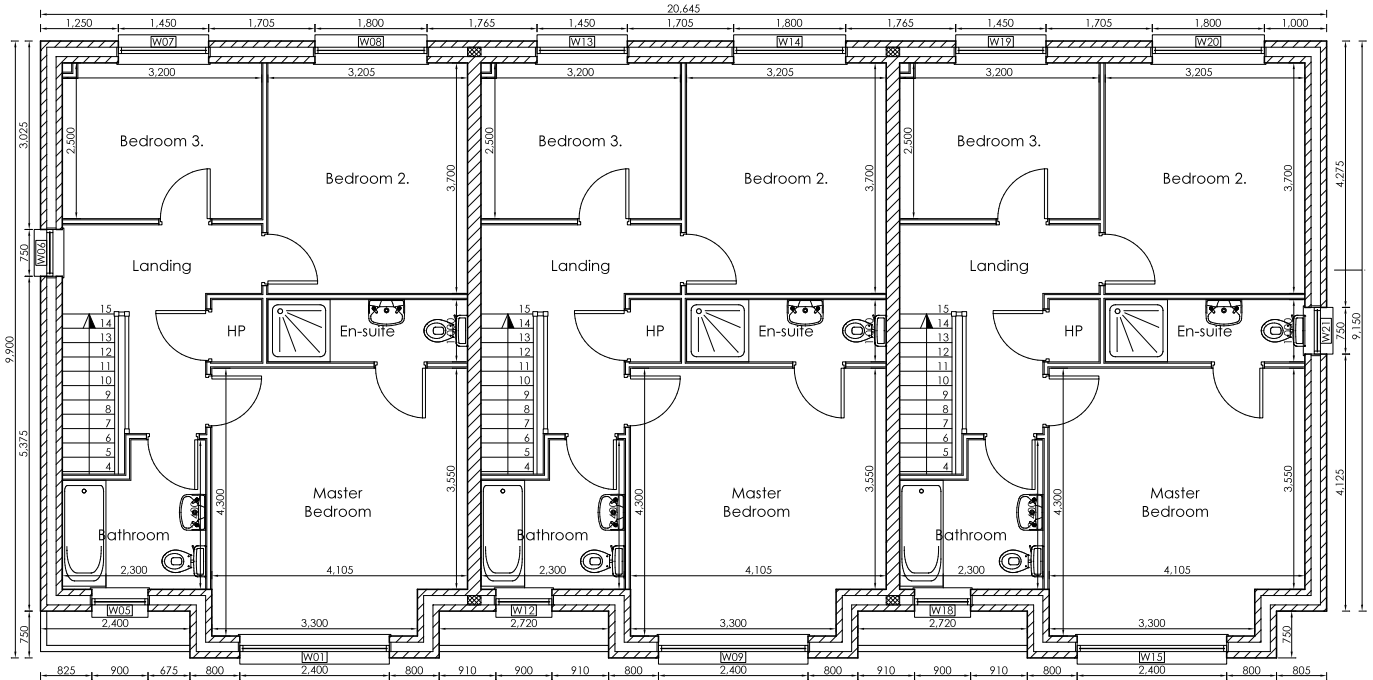


Comhairle Cathrach
& Contae **Luimnigh**

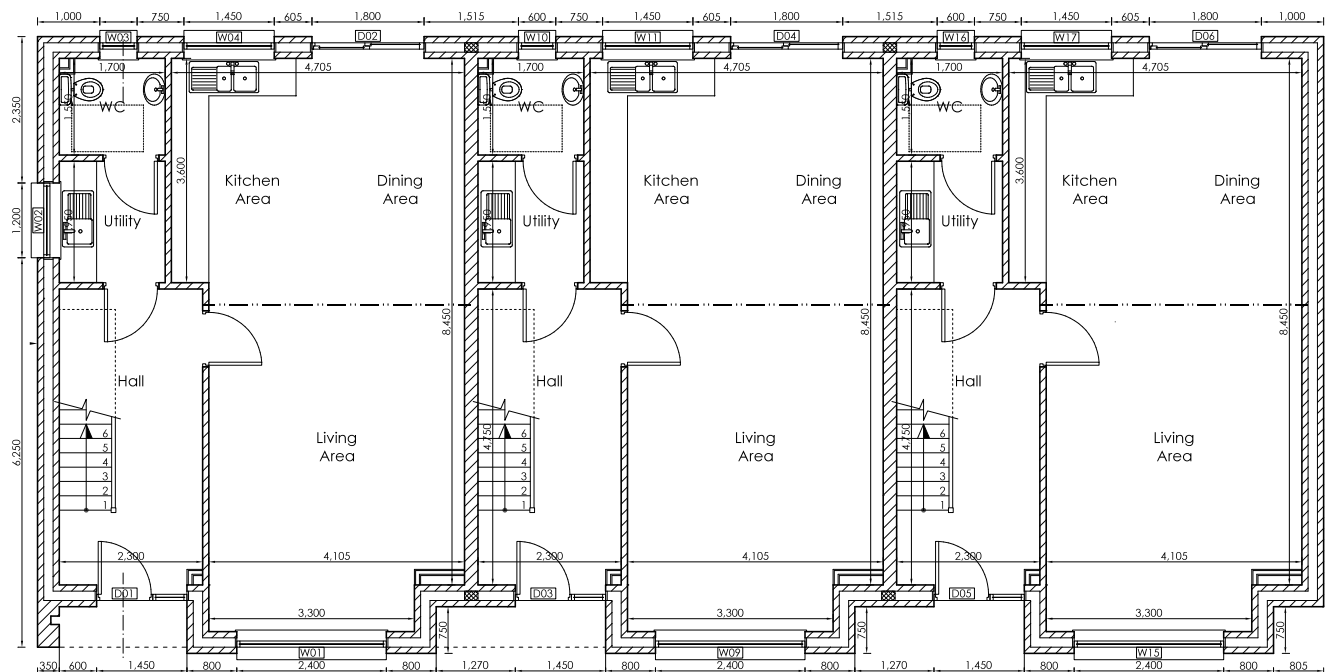
Limerick City
& County Council

TYPICAL 3 BEDROOM TERRACED LAYOUT

First Floor



Ground Floor





Comhairle Cathrach
& Contae **Luimnigh**

Limerick City
& County Council

