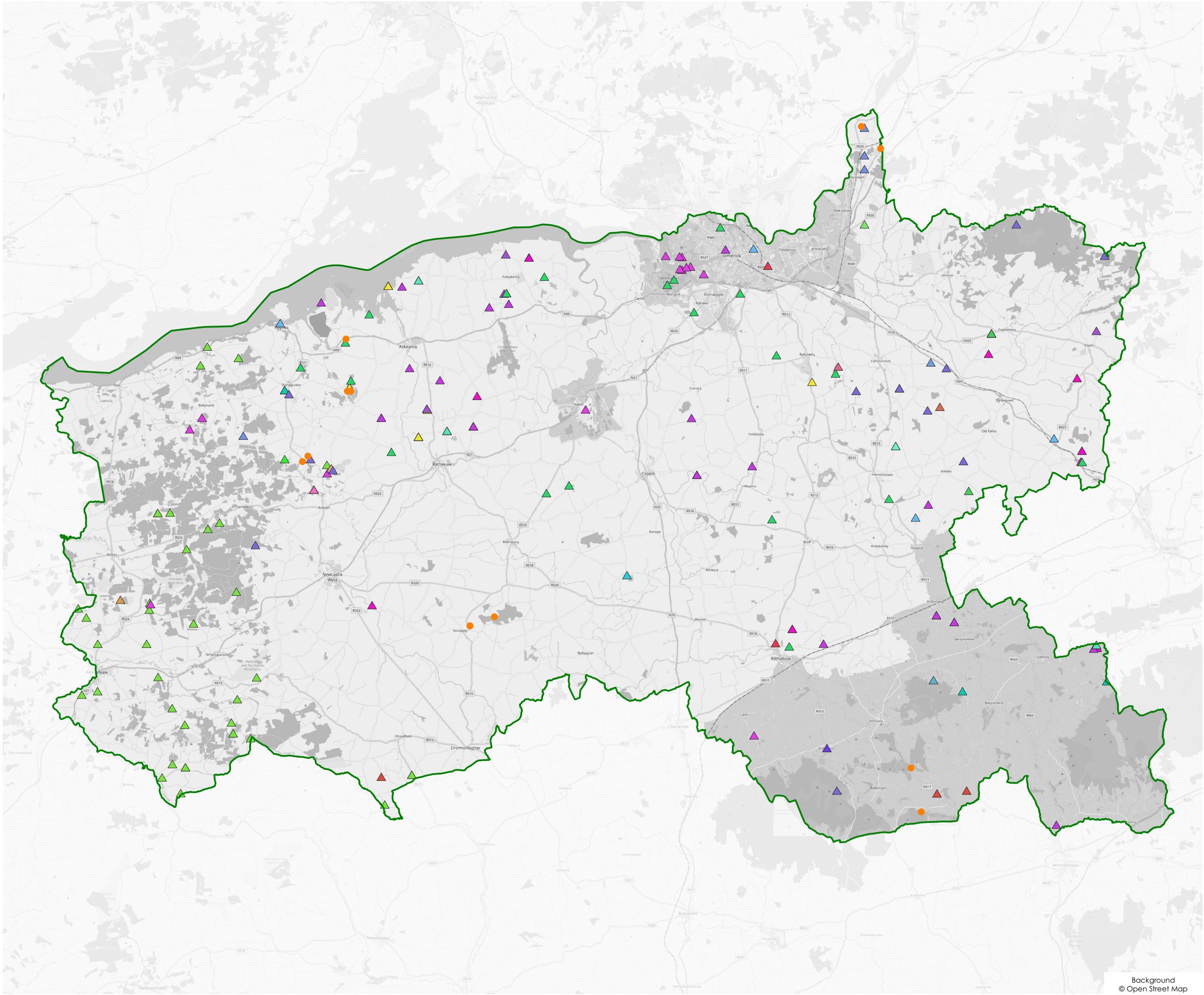


**Draft Limerick
Development Plan
2022 -2028**

GSI Mineral Map

LEGEND

- ▲ calcite
- ▲ chalcopryrite
- ▲ clay
- ▲ clay, ball
- ▲ clay, brick
- ▲ clay, fire
- ▲ clay, shale, brickshales
- ▲ coal
- ▲ conglomerate (in general)
- ▲ copper
- ▲ dolomite, (dolostone)
- ▲ galena
- ▲ gold
- ▲ greenstone
- ▲ haematite
- ▲ iron
- ▲ lead
- ▲ limestone (in general)
- ▲ limonite
- ▲ malachite
- ▲ phosphate
- ▲ pyrite
- ▲ quartz
- ▲ sand and gravel
- ▲ sandstone (in general)
- ▲ shale
- ▲ silver
- ▲ slate
- ▲ spa water or minerals
- ▲ sphalerite
- ▲ tennanite
- ▲ tuff
- ▲ zinc
- Active Quarries
- Limerick County Boundary



DATE: November '21 | Dwg. No.: CDP-C_-GSI_MQL
 GSI LICENCE No.: © Ordnance Survey Ireland. All rights reserved.
 Licence No. 2017/09/CDMA/Limerick City & County Council

