



Comhairle Cathrach
& Contae **Luimnigh**

Limerick City
& County Council

Adare Rathkeale Municipal District

District Engineer's Report



Ballingarry Reconstruction

Adare Rathkeale Municipal District Meeting

October 2021

TABLE OF CONTENTS

	Page
1 Councillor Requested Reports	3
2 Schedule of Municipal District Works	6
3 Village Updates	12
3.1 Foynes	
3.2 Croom	
3.3 Adare	
3.4 Rathkeale	
3.5 Ballingarry	
3.6 Askeaton	
3.7 Shanagolden	
3.8 Pallaskenry	
3.9 Kildimo	
3.10 Banogue	
4 GMA Update	16

1. Councillor Requested Reports

1.1 Local Improvement Schemes

Local Improvement Schemes

Total LIS funding for AR MD €350K- 8 schemes (6 complete)

1.2 Community Involvement Schemes

Total CIS funding for AR MD €118K – 4 schemes (3 complete)

1.3 Marine Cove

Detailed Design finalised. Awaiting ESB advance works prior to Tender

1.4 Chawkes Cross & Lees Cross

Topographical Survey tenders received and appointment imminent.

Preliminary Designs & cost estimates Consultant tenders received and appointment imminent.

1.5 Town & Village Renewal Works

The Mall, Ballingarry – Ongoing

Undergrounding Works in Askeaton to be tendered shortly

Part 8 Query

The laying underground of sewers, mains, pipes or other apparatus does not require a Part 8 even if the works exceed €126,000.

Croom Car Park- finalising land transfer /Contractor appointed

1.6 Adare Footpaths

Contractor on site

1.7 SMDW

Surface Dressing complete

Reconstruction works complete

Former National Road Caherass- Complete

Drainage Schemes & Active Travel Schemes ongoing

1.8 Active Travel

€1.2m allocated at 6 locations.

Rathkeale, Askeaton, Ballingarry, Croom, Kildimo & Pallaskenry

1.9 Licence Application for the placing of Signs on the Public Road/Footpath

A licence is required under Section 254 of the Planning and Development Act 2000

To place/maintain/retain an appliance/apparatus/structure/banner on ,under over or along a public road.

1.10 N69 Ballyvogue and Ballyengland.

Report from CS 14/09/2021:

We issued a draft feasibility report to TII for review and they have reverted with a number of comments which we are currently actioning. This should be resubmitted in the next week or so.

A Road safety audit has been organised for same and is due to take place in the next couple of weeks.

Once the feasibility report is accepted we will then submit a Preliminary design report along with the RSA. While we would be hopeful that the design will not be amended too much we will need to examine the RSA and incorporate any design changes necessary.

Ballyvogue: we would be looking at tidying the junction and increasing sightlines looking east. Due to the alignment of the N69 we are hoping to achieve 160m as there is a crest that limits achieving 215m. We will likely need to examine the purchase of land and the removal of overhead lines. Looking west the boundary is to be examined (tided) but I don't feel that we will need to purchase land.

Ballyengland: We will need to look at squaring up the junction and extending the sightlines. We may also need to examine the provision of a VRS from the bridge to the junction. This will involve a bit more than Ballyvogue, in that the junction will need to be realigned and the local road is quiet steep. We will be looking at extending the sightlines to 160m here also as 215m is likely not achievable. We will need to purchase land both side of the junction. From speaking to one landowner he is happy that we are doing something here we have yet to speak to the other landowner.

Our long term plan is once the PDR is accepted that we will look to appointing a consultant to progress the scheme to detail design.

We will provide drawings for Ballyvogue and Ballyengland once updated.

1.11 Coolanoran

Part 8 for Traffic Calming to commence once PDR approved by TII.

Traffic Calming & Pavement works to proceed as combined Scheme.

Depression on Eastbound Lane – surveyed and submitted on Geo App

1.12 Streetscape Enhancement Scheme

See table below showing number of applications and approvals under the Streetscape enhancement Scheme.

Location	Number of Applications	Proposed Number of Approvals	Value of Approvals
Askeaton	12	10	€29,606.67
Rathkeale	10	9	€28,494.59

2. Update on Schedule of MD Works

ADARE RATHKEALE MUNICIPAL DISTRICT Road Works Scheme 2021	
Work Category	€
Restoration Improvement (RI) -Road Reconstruction	€1,947,561
Restoration Maintenance (RM) –Surface Dressing	€397,114
Supplementary Restoration Maintenance (SRM – Surface Dressing	€283,089
Drainage Grant	€200,000
General Maintenance (GM)	€824,738
General Maintenance Safety (GMS)	€91,637
Tar Patching (TP)	€365,543
Low Cost Safety Improvement Works (LCSI)	€50,000
General Municipal Allocation (GMA)	€ 270,000
Bridge Rehabilitation	€185,000
N69 Kilcornan Traffic Calming	€100,000
N69 Court Cross	€275,000
M20 Limerick to Cork	€5,000,000
Foynes to Limerick	€2,000,000
Sustainable Travel Measures Grant (Active Travel)	€1,200,000
Total Defined MD Spending	€ 13,189,682

Regional Roads Road Reconstruction Allocation € 593,261.58			
Road No.	Description	Length (m)	Total Cost €
R518	Ballingarry Main Street Overlay	400	Completed
R521	Shanagolden N69 Overlay	130	Completed
R512	Ballyneety Overlay	230	Completed
R521	Moig Road Edge Stabilising	50	Completed
R521	Shanid Lower Edge Stabilising	50	Completed
Total		860	€593,261.58

Local Roads Road Reconstruction Allocation € 1,354,300.00			
Road No.	Description	Length (m)	Total Cost €
L1423	Kildimo School to N69 Overlay	215	Completed
L6106	Loghill Middle Rd	1074	Completed
L6010	Shanpallas	1100	Completed
L8032	Hollywood Road	1450	Completed
L1423	Clorhane	200	Completed
L6083	Park	300	Completed
L6019	Cragmore Askeaton	1000	Completed
L6135	Curraghchase	1430	Completed

L6117	Shanid Gardens Rd	400	Completed
L1210	Ballygrennan - Bridge towards Lees X	700	Completed
L8002	Attyflin	1000	Completed
L1207	Kilfinny to Nevilles	400	Completed
L1142	Poulatoon	670	Completed
L8014	Monaster Abbey Rd	600	Completed
L8003	Creora to Equestrian Centre	800	Completed
Total		11339	€1,354,300.00

Regional Roads Surface Dressing Allocation € 255,132.00			
Road No.	Description	Length (m)	Total Cost €
R521	Grouse Lodge towards Kate Daly	2300	Complete
R518	Mullins Cross to Dromard	2410	Complete
R512	Rockstown to Grange	2250	Complete
Total		6960	€255,132.00

Local Roads Surface Dressing Allocation € 141,982.13			
Road No.	Description	Length (m)	Total Cost €
L1237	Kilcool to the Thatch	2100	Completed
L8034	Tuogh East to Adare/Kildimo Rd Jn	700	Completed
L6117	Mountdavid Rd	1451	Completed
L8006	Ballyregan	1442	Completed
L1410	Manister to Croom	340	Completed
Total		6033	€141,982.13

Supplementary Restoration Maintenance Local Roads Surface Dressing Allocation € 283,089.25			
Road No.	Description	Length (m)	Total Cost €
L6005	Ballyengland Lower	1540	Completed
L1236	Askeaton Ballycullen jn towards Newbridge	410	Completed
L8029	Cappagh to Knockdromin Railway	1650	Completed
L6176	Cappagh Cross to Reservoir	900	Completed
L1222	Thatch to Ardgoul	900	Completed
L8003	Ballycahane to Equestrian Centre	2340	Completed
L1207	Kilfinny to Nevilles	700	Completed
L1410	Manister to Croom	2000	Completed

L5086	Ballybricken	1400	Completed
Total		11840	€283,089.25
Drainage Works Allocation € 200,000			
Road No.	Description	Length (m)	Total Cost €
L6110	L6110 Kiltteery	120	Started
L6113	L6113 Knocknabooly West	100	Completed
L6110	L6110 Kiltteery	60	Partially complete
L1224	L1224 Dromin - Gullies above Scanlons House	130	Partially complete
L1219	L1219 Curraghdeely		Scheduled
L1409	L1409 - Across L8006 Jn	250	Complete
R523	R523 Courtmatrix	200	Completed
L6035	L6035 Woodstock Road	100	Scheduled
R518	Dromard - 320m of 300mm storm drainage along R518 on southbound lane outfalling to existing drain in field - some works to field drain - Extends along all houses on southbound lane side of road	320	Scheduled
L8017	L8017 Banogue	100	Completed
Total		1380	€200,000.00

Low Cost Safety Improvement Schemes (LCSI) Allocation € 50,000.00			
Road No.	Description	Length (m)	Total Cost €
L6070	Kilcolman		Complete
Total			€50,000.00

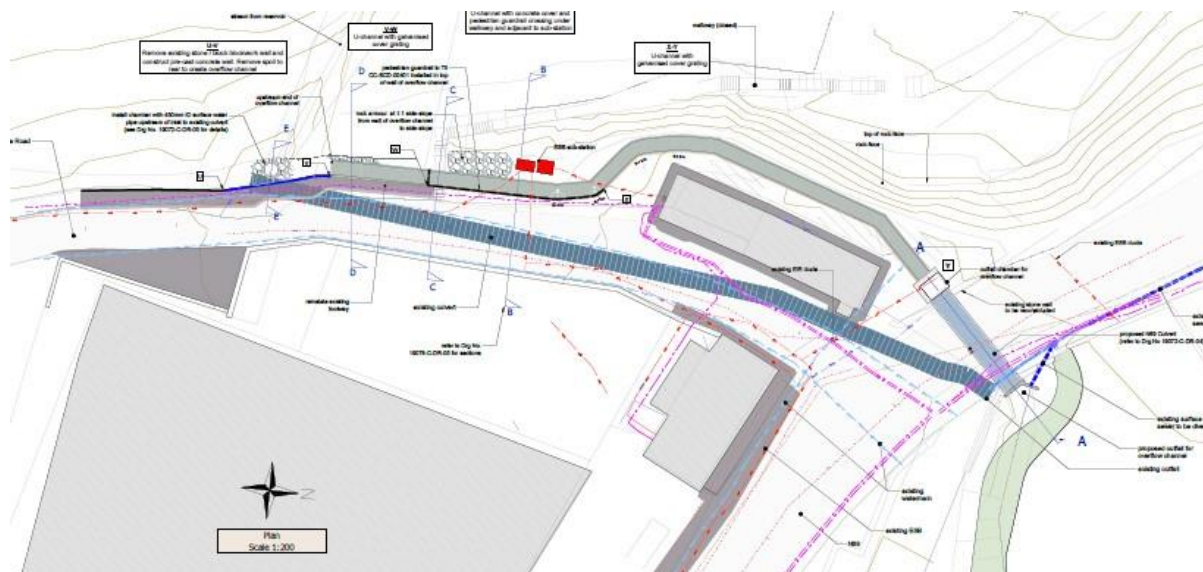
Active Travel Measures Allocation € 1,200,000			
Road No.	Description	Length (m)	Total Cost €
	Croom Village Pedestrian Improvement Works		Substantially complete
	Rathkeale Pedestrian Improvement Works		Substantially complete
	Ballingarry Village Pedestrian Improvement Works		Complete
	Kildimo Pedestrian Connection Works		Underway
	Askeaton Village Pedestrian Improvement Works		Substantially complete
	Pallaskenry Pedestrian Improvement Works		Contractor appointed
Total			€1,200,000.00

3 Village Updates

3.1 Foynes

Marine Cove Culvert

Part 8 Planning May 2021 MD meeting.
Wayleaves to be served. Tender stage. Awaiting ESB Advance Works.



Community Consultation

Discussions have been held with the Community Council in relation to requirements/aspirations for the village, these include improvements to footpaths, additional pedestrian crossings, improvements to the viewing area amongst other issues. The Community Council plan to do some landscape improvements to the viewing area, LCCC Parks Department have carried out improvements to the Recycling Area.
Funding received and works complete for upgrade works to footpaths on N69 near Dernish Avenue.

3.2 Croom

Croom Traffic Management Project

The works on the Main Street, High Street Junction are now complete, works are now also complete at the Main Street Pedestrian Crossing. An application for funding of the Main Street Carpark under the Town and Village Renewal Scheme was successful. The Roundabout at the Garda Station is complete. Contractor on site for Active Travel Schemes on Ballingarry & Caherass Roads.

Croom Distributor Road

The Croom Distributor road is now open for access to the Coláiste Chiarán School.

3.3 Adare

Footpath Works along the N21

Options to complete the footpath from Manor Fields to Murphy's Cross are currently being explored with TII.

Contractor on site for Paving Works in Main Street.

Pope's Quay

Solicitors for Limerick City and County Council are currently finalising negotiations with the Dunraven Estate to secure ownership of the lands required for this development. LCCC will seek to incorporate this project into the proposed CFRAMS works in Adare.

Adare Fountain

Works to Adare Fountain are complete.

Public Realm Plan

Consultants appointed & initial public consultation held

3.4 Rathkeale

Active Travel and TVRS Footpath links

Works completed on footpath links on the Riverside Walkway and on going from the Library to Whites Garage. Active travel works substantially complete at Castlematrix.



3.5 Ballingarry

The Mall TVR Project

Michael Healy and Partners Consultants have selected a preferred tenderer for the construction of this project, this contract is underway.

Road and Footpath Reconstruction Rylanes to the Grotto

Footpaths and resurfacing works were completed last year. A raised table junction at Rylands was completed.

Active Travel Funding

Active Travel funding used to complete footpath links to the playground on the Lower road, as well as addressing structural stability issues on the adjoining graveyard wall. Works complete.

3.6 Askeaton

Askeaton Town Centre TVR Project

A Consultant has been appointed to conduct a Public Realm Study in Askeaton. The results from this study will determine the Town Centre Improvement works in the town. Initial meetings have been held with this consultant, with a further meeting held on site just before Christmas.

A Tender process for the appointment of Consultants to Design and Construct the Undergrounding of Services in Prominent areas of the town as well as enhancing Public Lighting was undertaken during the month of January and a Consultant has been appointed. Preliminary Design is expected

within a month, after which Ministerial Consent will be required for Archaeology. Project due to go to Tender end of September.

Section 38 Statutory Notice for Junction Improvement Works at West Square currently at Public Consultation.

Active Travel Project

The Active Travel Grant will be used to widen and improve the footpath link between Twohigs and the Soccer Club. These works are complete.

Footpath improvement connectivity between Swimming Pool & Bridge on N69 has recently been completed.

3.7 Shanagolden

Shanagolden Low Cost Safety Works

This project is now largely complete.

3.8 Fedamore

LCCC has made an application for traffic calming funding in the village of Fedamore under the Low Cost Safety Scheme. This was unsuccessful.

3.9 Pallaskenry

Active Travel funding was received for Footpath works.
Contractor appointed.

3.10 Kildimo

Active Travel

Active Travel funding was received to extend the footpath from the GAA Pitch to Old Kildimo and connect the houses to the west of Old Kildimo. Land dedications agreed and Contractor now on site

Road Improvements

Road Improvement works, managed by MWRDO, substantially complete between Kildimo and Boolane Bends

3.11 Banogue

Traffic Management works, managed by MWRDO complete.

4 GMA Updates

Cllr Bridie Collins	€ 45,000
Nominations 2021	
Rathkeale Welcome Centre	400
Ballyneety Christmas Lights	400
Shannon Dragons	3,000
Ballysteen Library	3,000
Christmas Crib in the Adare-Rathkeale MD Office	300
Foynes GAA Club	3,000
Mount Earl Junction, Adare	3,000
Abha Bhan Parish Park, Loughill	4,000
Ballingarry Community Park	3,000
Pallaskenry National School	2,000
Crechora/Manister GAA Club	1,000
Adare Park Fence Replacement	6,000
Kildimo/Pallskenry GAA Club	3,000
Adare GAA Club	4,000
Kilcornan National School	2,000
West Limerick Heritage Network	500
Rathkeale Steering Committee	1,000
TOTAL	€39,600

Cllr Stephen Keary	€45,000
Nominations 2021	
Public Lighting in Coolcappagh Village	2,000
Christmas Crib in the Adare-Rathkeale MD Office	300
Crechora/Manister GAA Club	4,000
Askeaton Community Council	4,500
Abha Bhan Parish Park	3,000
Foynes Community Council	3,000
Gerald Griffin GAA Club	2,000

Rathkeale Community Council	1,500
Croagh National School	3,000
Kilcornan National School	4,000
Pallaskenry National School	3,000
Loughill Community Development	3,000
Askeaton Heritage and Tidy Towns	2,500
Rathkeale Steering Group	2,000
Croagh National School, Parents Association	3,000
Total	€40,800

Clr Kevin Sheahan	€45,000
Nominations 2021	
Paddy Cronin Researcher and Author	4,000
Christmas Crib in the Adare-Rathkeale MD Office	500
Reilig Mhuire Burial Ground, Askeaton	1,000
Spiritual Garden of Remembrance, Clonreask	3,000
Askeaton/Ballysteen Tennis Club	4,000
Foynes GAA Club	3,000
Church of Ireland, Askeaton	1,000
Pallaskenry National School	2,000
Askeaton GAA Club	3,000
Ballysteen Carneige Library	2,500
Askeaton Heritage and Tidy Towns	3,000
Askeaton AFC	4,000
Askeaton Geology Group	1,000
Kilcornan National School	2,000
Dr. Pat Wallace	10,000
Askeaton Swimming Club	1,000
TOTAL	€45,000

ClIr Emmett O'Brien	€45,000
Nominations 2021	
Kildimo/Pallaskenry GAA Club.	7,000
Christmas Crib in the Adare-Rathkeale MD Office	300
Captain Thomas Keane Memorial Cup	1,000
Pallaskenry National School	2,500
Road Markings, Ringmoylan	1,000
St. Senan's GAA Club	1,000
Ilen Boat School	2,000
Kilcornan National School	2,500
Kildimo National School	2,500
Pallaskenry Scouts Troop	2,000
Kilcornan Church Car Park	10,000
Pallaskenry Community Council	2,000
Ladder at Ringmoylan Pier	3,700
St. Francis Boxing Club	2,000
TOTAL	€39,500

ClIr John O'Donoghue	€ 45,000
Nominations 2021	
Fedamore GAA Club	3,000
Christmas Crib in the Adare-Rathkeale MD Office	300
Ballingarry Community Park Group	1,700
Croom Development Association	10,000
Ballingarry Development Association	2,000
Banogue GAA Club	2,000
Granagh/Ballingarry GAA Club	3,000
Creora/Manister GAA Club	2,000
Ballyneety Community Development Association	2,000
Fedamore Community Hall	2,000
Croi na Coille, Croom	3,000
Granagh Development Association	2,000
TOTAL	€33,000

Cllr Adam Teskey	€45,000
Nominations 2021	
Rathkeale Soccer Club	5,000
Deel Boat Club	3,000
Knockfierna Heritage Centre	2,000
Limerick Celtics Basketball Club	1,000
Ballyhahill Development Association	3,500
Public Lighting in Rathkeale	2,000
Rathkeale Church of Ireland roof repairs	1,000
Loughill Burial Ground Committee	5,000
Kildimo/Pallaskenry GAA Club	1,000
Christmas Crib in the Adare-Rathkeale MD Office	300
Church of Ireland Rathkeale Roof Repairs	5,200
Askeaton/Ballysteen Tennis Club	1,000
Church of Ireland, Askeaton	1,000
Repairs to Ballymartin Boundary Wall	908
Loughill Development Association	1,000
Defibrillator, Cappagh Village	€2,346.56
TOTAL	€35,254.56