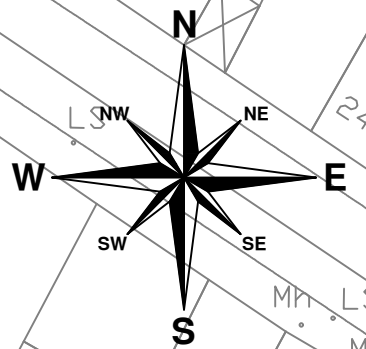
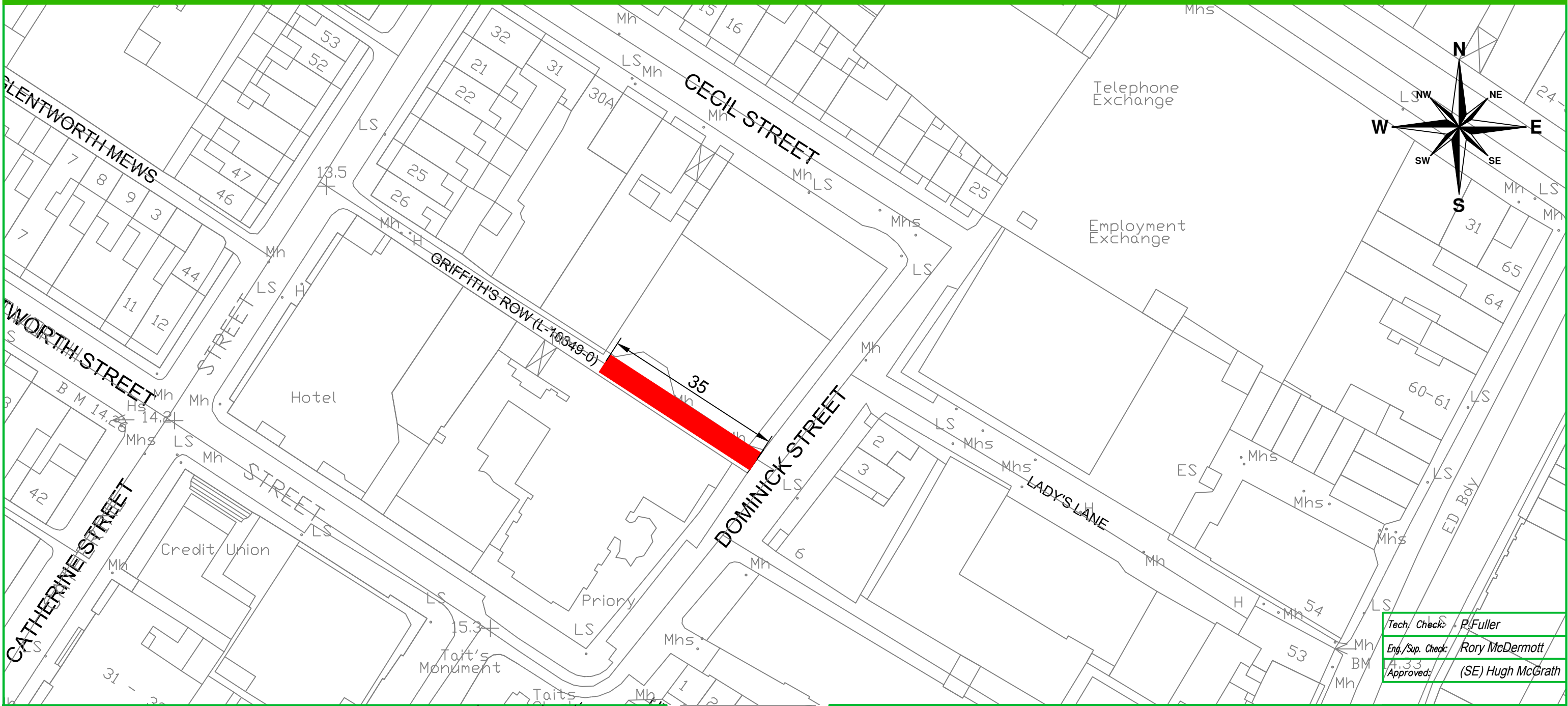


©LIMERICK CITY & COUNTY COUNCIL.

- 1) THIS DRAWING IS THE PROPERTY OF LIMERICK CITY & COUNTY COUNCIL. IT IS A CONFIDENTIAL DOCUMENT AND MUST NOT BE COPIED, USED, OR ITS CONTENT DIVULGED WITHOUT PRIOR WRITTEN CONSENT.
- 2) ALL LEVELS ARE REFERRED TO ORDANCE SURVEY DATUM, MALIN HEAD.
- 3) DO NOT SCALE, USE FIGURED DIMENSIONS ONLY. IF IN DOUBT, ASK.
- 4) ORDANCE SURVEY IRELAND LICENCE NO. LIMERICK COUNTY CCMA 2019/09/CCMA COPYRIGHT GOVERNMENT OF IRELAND.

Roads Act 1993 , Road Regulations 1994 – Article 12 , Temporary Closure of Roads

Roads to be closed to Traffic and Parking	Periods of Road Closure	Period of Prohibition
Griffith Row Street (Road No. L-10349-0) From its junction with Dominic Street (L-10357-0) for a distance of 35m in a north west direction	24th June, 2021, 12:00am (Midnight) to the 28th February 6:00pm, 2022 Traffic to Divert via Catherine Street, Cecil Street & Dominick Street	Current Parking Prohibitions will remain in place on the remainder of Griffith Row outside of proposed operating hours of Road Closure.



Tech. Check:	P. Fuller
Eng./Sup. Check:	Rory McDermott
Approved:	(SE) Hugh McGrath

REV.	DESCRIPTION	BY	CKD	APP	DATE



Job: SERVICE OPERATIONS DIRECTORATE: ROAD CLOSURE
Title: SITE LAYOUT OF ROAD CLOSURE: GRIFFITH ROW 35m (L-10349-0)

SERVICE OPERATIONS & MAINTENANCE (METROPOLITAN DISTRICT CITY)

- Taisteal agus Iompar Comhairle Cathrach & Contae Luimnigh Tuair an Dail Luimneach
- Service Operations & Maintenance North/Metro Limerick City and County Council Dooradoyle Limerick t: +353 (0) 61 556 000, www.limerick.ie/council

Stage:	TRAFFIC INFORMATION
Scale @A3:	1:1250
Drawn:	PF
Date:	11.05.2021
Drawing No:	2021-GRIFFITH ROW
Rev:	VO