

O'Connell Street Revitalisation Project



atm

WEEKLY BULLETIN NO. 13

WE 23/05/21



Comhairle Cathrach
& Contae **Luimnigh**

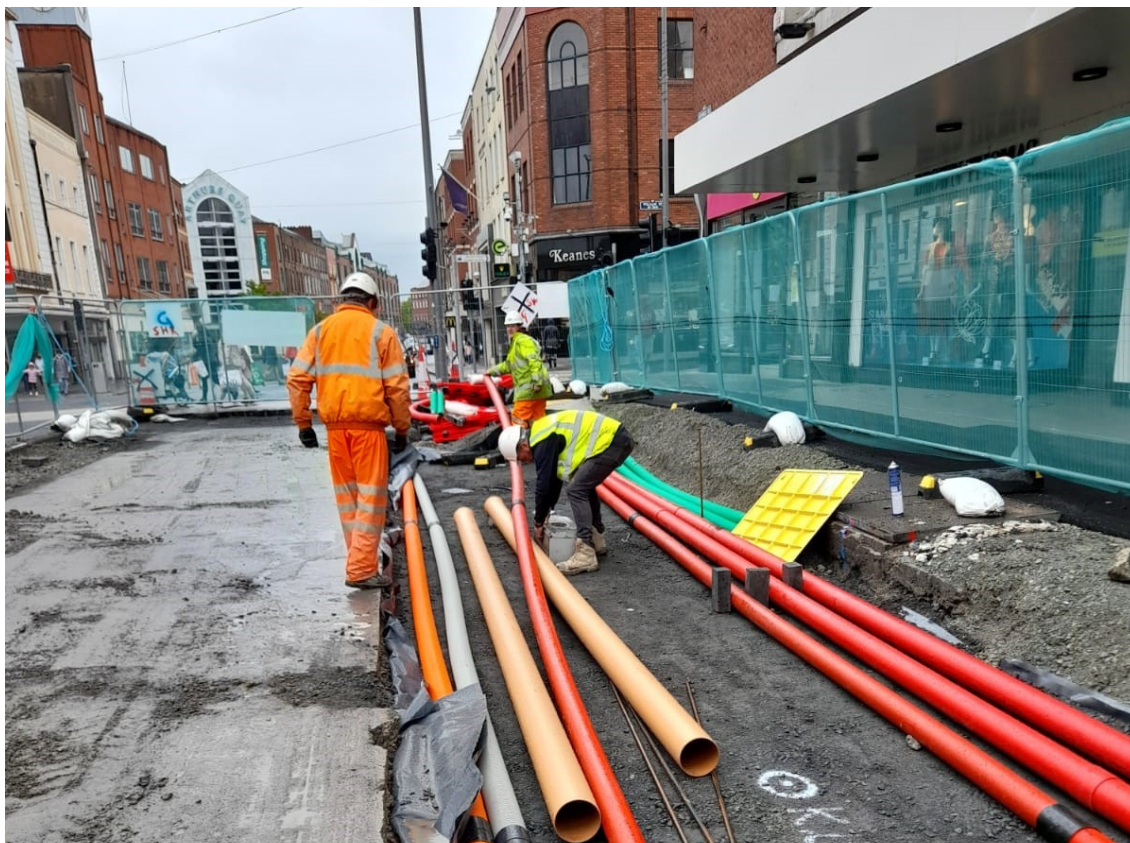
Limerick City
& County Council

UPDATE:

Phase 1 - Block 6, Thomas Street between Little William St and O'Connell St and

Phase 2 - Block 2, O'Connell Street between William St and Thomas St

During the past week the site team have completed repairs to the vaults in the current phase of works. The realignment of the paving drainage is ongoing.



Should you have any queries in relation to the works, please do not hesitate to contact our Project Manager or Public Liaison officer on the details below

If you would like to be included in communications from ShareRidge on this project, please send an email to: Limerickoconnellstreet@shareridge.ie



Project Manager | Barry Lane | 086 066 8435 | blane@shareridge.ie

Public Liaison | Neasa Macnamara | 086 068 0011 | nmacnamara@shareridge.ie

O'Connell Street Revitalisation Project



WEEKLY BULLETIN NO. 13

WE23/05/21



Comhairle Cathrach
& Contae **Luimnigh**

Limerick City
& County Council

UPDATE:

Phase 1 - Block 6, Thomas Street between Little William St and O'Connell St and
Phase 2 - Block 2, O'Connell Street between William St and Thomas St.

Over the next week the site team will complete the installation of the ducts in this phase and surround and cover with a reinforced concrete slab.

We will be realigning the traffic and pedestrian signals at the Thomas Street pedestrian crossing and removing redundant traffic signals and associated cabling.

Works will also commence on the reinstatement of the structural slab on the vehicular trafficked area.

Work is continuing on the the project, however LCCC and ShareRidge have been made aware of an issue with the supply of some of the granite paving materials. LCCC and ShareRidge are working to minimise the impact of this.



Should you have any queries in relation to the works, please do not hesitate to contact our Project Manager or Public Liaison officer on the details below

If you would like to be included in communications from ShareRidge on this project, please send an email to: Limerickoconnellstreet@shareridge.ie



Project Manager | Barry Lane | 086 066 8435 | blane@shareridge.ie

Public Liaison | Neasa Macnamara | 086 068 0011 | nmacnamara@shareridge.ie