



The Beauty of Trees

Mary Keenan

Gash Gardens & Nursery, Co. Laois.





Photos: Heritage Trees of Ireland



Photo: Heritage
Trees of Ireland

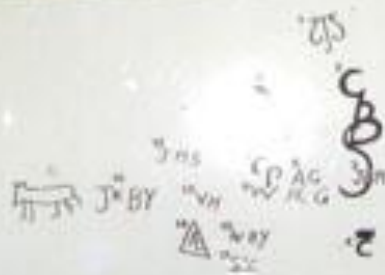
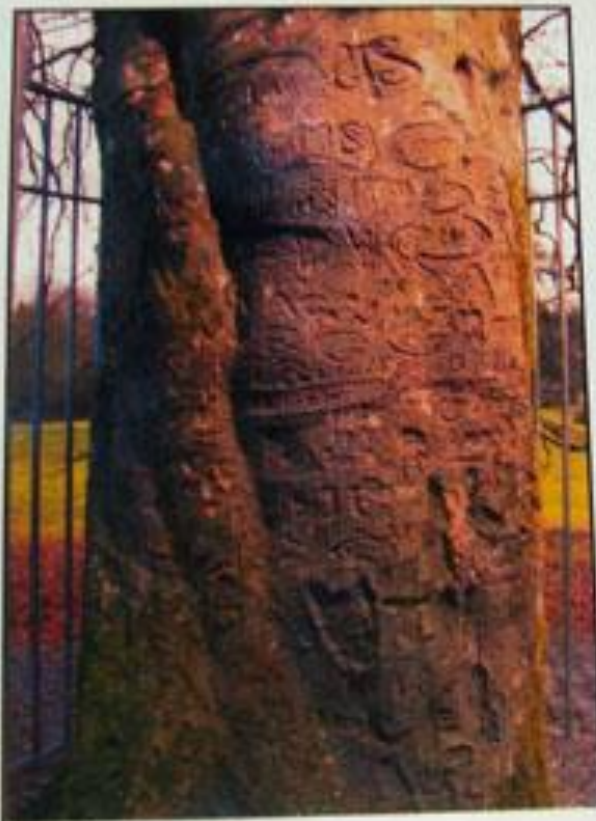




Photos: Heritage Trees of Ireland



Photos: Heritage Trees of Ireland



The Autograph Tree (Copper Beech)

with a guide to some of the
carved initials

- 1 Theodore Spicer Simpson
2. George Bernard Shaw
3. John Mansfield
4. Countess of Cromartie
5. Augustus John
6. Elinor Monsell
7. An Craoibhin Aioibhinn
(Douglas Hyde)
8. Lady Augusta Gregory
9. William Robert Gregory
10. William Butler Yeats
11. Sean O'Casey
12. John Millington Synge
13. Violet Martin "Ross"
14. George W. Russell (A. E.)
15. Jack B. Yeats

Other signatures on the tree

include George Moore,
Sara Allwood, Lennox
Robinson, Lady Margaret
Sackville, Frank Fay and
William Fay, J. D. Innes,
Robert Ross, Ian Hamilton,
John Quinn (New York Lawyer)
and Dame Ethel Smythe



Woodstock Gardens, Inistioge. Co. Kilkenny





Corkagh Park, Clondalkin. Dublin

Our Native Trees

Airig fedo - 'Nobles of the Wood'

oak - dair - *Quercus robur* (pedunculata oak) and *Quercus petraea* (sessile oak)
hazel - coll - *Corylus avellana*
holly - cuileann - *Ilex aquifolium*
yew - iúr - *Taxus baccata*
ash - fuinseóg - *Fraxinus excelsior*
Scots pine - ochtach - *Pinus sylvestris*
wild apple - aball - *Malus sylvestris*

Fodla fedo 'lower divisions of the wood'

blackthorn - draighean - *Prunus spinosa*
elder - tromán - *Sambucus nigra*
spindle tree - feoras - *Euonymus europaeus*
whitebeam - fionncholl - *Sorbus aria*
strawberry tree - caithne - *Arbutus unedo*
aspen - crann creathach - *Populus tremula*
juniper - aiteal - *Juniperus communis*

Aithig fhedo - 'commoners of the wood'

alder - fern - *Alnus glutinosa*
willow, sally - saileach - *Salix caprea*, *Salix cinerea*
whitethorn, hawthorn - scé - *Crataegus monogyna*
rowan, mountain ash - caorthann - *Sorbus aucuparia*
birch - beith - *Betula pubescens* (downy birch) and *Betula pendula* (silver birch)
wych elm - leamhán - *Ulmus glabra*
wild cherry - idath - *Prunus avium*

Losa fedo 'bushes of the wood'

bracken - raith - *Pteridium aquilinum*
bog-myrtle - rait - *Myrica gale*
furze, gorse, whin - aiteann - *Ulex europaeus*, *Ulex gallii*
bramble - dris - *Rubus fruticosus*
heather - fraoch - *Calluna vulgaris*, *Erica cinerea*
broom - giolcach - *Cytisus scoparius*
wild rose - spín - *Rosa canina*



White's Orchard, Dungarvan. Co. Waterford

**Our Trees
are under
THREAT**



Ash Dieback



Bleeding Canker of Horse Chestnut



Oak Processionary Moth



Castletown, Co. Laois



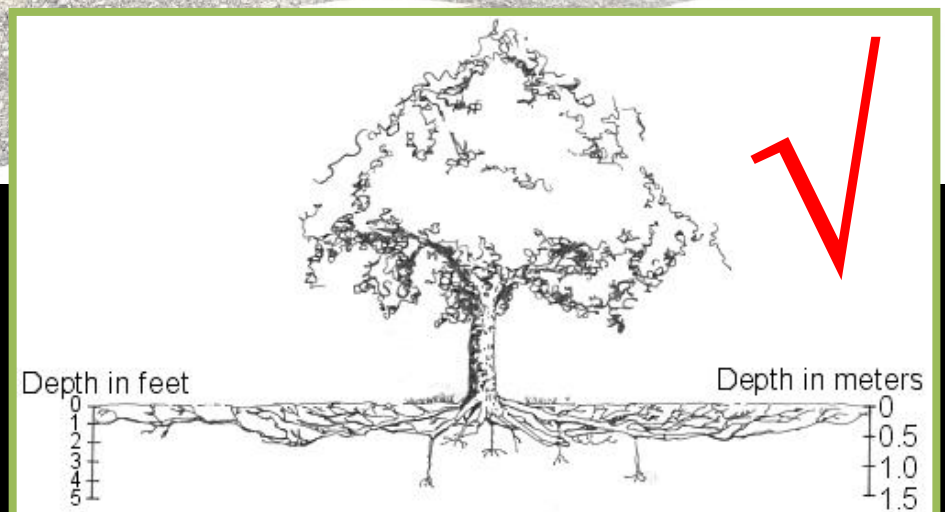
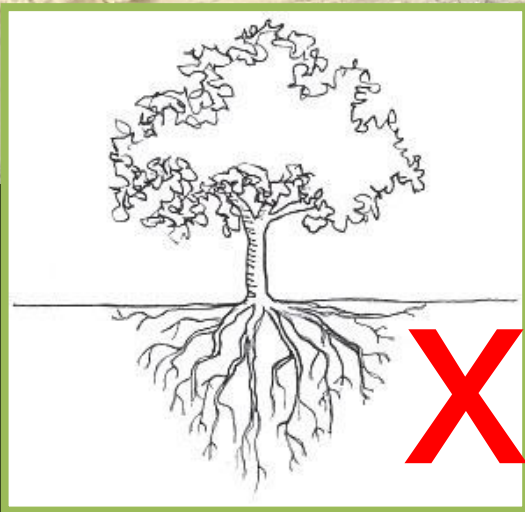
Photo: Heritage Trees of Ireland

Lime Avenue - The Marina, Cork





The Dark Hedges, Co. Antrim



THE TROUBLE WITH TREES



◦ Trip Hazards

◦ Damaging built environment

◦ Too Big

◦ Blocking Views

◦ Dropping leaves, fruit,

◦ Damaging services

◦ Blocking pipes & drains

◦ Causing allergies

◦ Obstructing satellite dishes & solar panels

◦ Blocking Street Lights

◦ Blocking light

◦ Bird Droppings
◦ Honeydew

◦ Driveway widening

◦ Roots /branches encroaching

Trees Are Good For Us

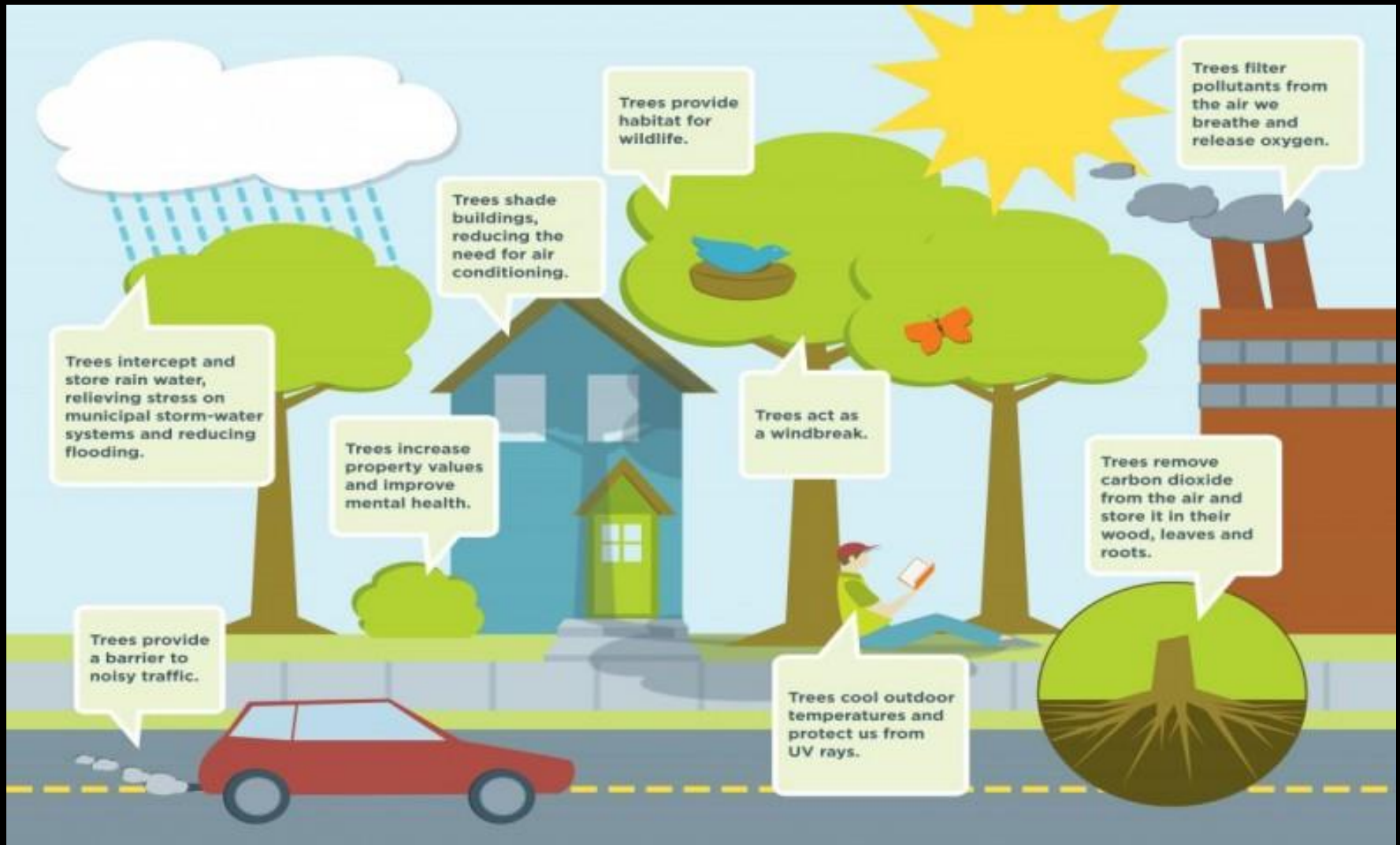






Photo: L&L Photography
Laois Tourism









Salix gracilistyla 'Melanostachys'



Salix gracilistyla 'Mount Aso'







ALFA

161-D-34319

09-D-2036





WELLINGTONIA GIGANTEA
PLANTED BY
HER MOST GRACIOUS MAJESTY
QUEEN VICTORIA
AUGUST 1861





Fagus sylvatica 'Rohan's Obelisk'



Davidia involucrata



Liriodendron tulipifera



Columnar

Oval

Vase

Weeping

Pyramidal

Round





Prunus 'Shirotae'





Quercus robur 'Fastigiata'



Carpinus betulus 'Fastigiata'



Neilstown Road, Dublin



Ulmus 'Dodoens'



Sorbus 'Joseph Rock'



Sorbus cashmiriana





Amelanchier lamarckii



Salix alba 'Tristis'



Fagus sylvatica 'Pendula'



Acer globosum



Acer pseudoplatanus 'Spaethii'



Sequoiadendron giganteum





Pinus nigra



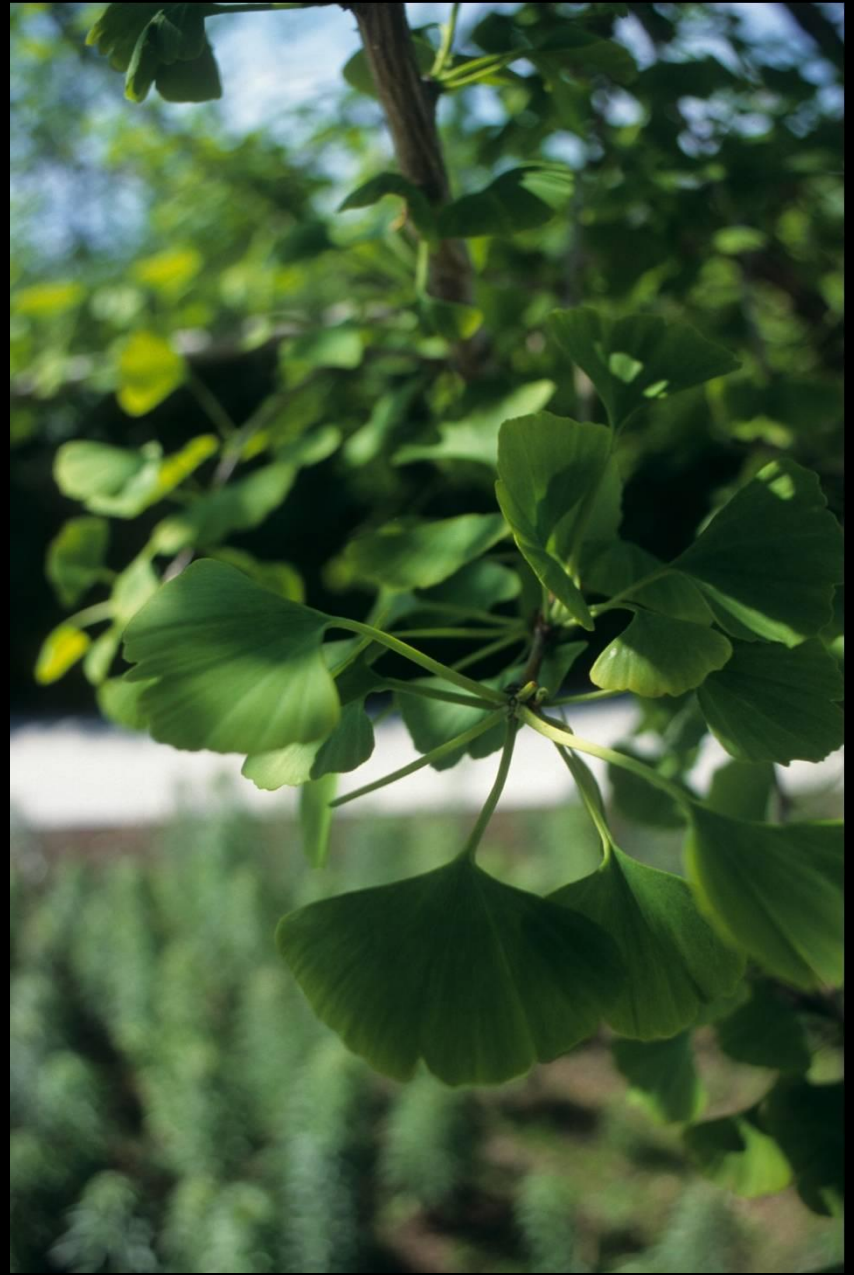
Aesculus hippocastanum



Aesculus x carnea 'Briotii'



Castanea sativa



Ginkgo biloba



Zelkova serrata



Pterocarya fraxinifolia



Prunus yedoensis







PAINTS

Bank of Ireland

REG

116



Baggot Street, Dublin



Main Street,
Bunclody, Co.
Wexford









Acer palmatum 'Atropurpureum'



Acer pseudoplatanus 'Brilliantissimum'



Acer pseudoplatanus 'Brilliantissimum'



Crataegus laevigata
'Paul's Scarlet'



Crataegus orientalis



Malus aldenhamensis



Malus 'Royalty'



Malus 'Crittenden'



Malus 'Golden Hornet'



Magnolia soulangeana



Sophora tetraptera



Prunus padus 'Watererii'



Prunus cerasifera 'Nigra'



Pyrus salicifolia 'Pendula'



Acer pensylvanicum



Acer davidii 'Serpentine'



Acer griseum



Betula utilis var. *jacquemontii*



Betula albosinensis 'Fascination'



Parrotia persica



Parrotia persica 'Vanessa'



Parrotia persica



***Cercidiphyllum
japonicum***



“Society grows great when old men plant trees whose shade they know they shall never sit in.”

Greek Proverb



FROM THE CREATORS OF **DESPICABLE ME**



Dr. Seuss'
The LORAX

IN THEATERS, real D AND IMAX TREE-D

WARNER BROS. PICTURES

WWW.THELORAXMOVIE.COM

DR. SEUSS' ENTERTAINMENT





The best time to
plant a tree
was 20 years ago.

The second-best time
is now

A large, moss-covered tree stands in a lush garden. The tree's trunk is thick and covered in green moss. Several gardening tools, including a shovel and a pitchfork, are leaning against the base of the tree. The garden is filled with green grass, various plants, and a path leading into the distance. The background shows more trees and foliage, creating a dense, green environment.

National Tree Week
March 21-27

*Thank
You!*

