



Explore Limerick City's  
riverside architecture with  
Open House Limerick

# SHANNON RIVER TREASURE TRAIL

**SENIOR**

## Before We Start

1 You will need to bring: this map (if you have a printer at home) or some paper (if using your phone), a pencil, and an eraser.

2 Start the trail at King John's Castle. Read the question, find the answer, then follow the directions to find the next stop!

3 Be careful of cars when crossing any roads - Remember the safe cross code!

4 HAVE FUN!

**START HERE**

1. KING JOHN'S CASTLE

2. VISITOR CENTRE

3. ALMS HOUSES

4. CITY and COUNTY  
COUNCIL

ST. MARY'S  
CATHEDRAL

POTATO MARKET

5. THE HUNT MUSEUM

6. ARTHURS QUAY PARK

THOMOND  
BRIDGE

SARSFIELD  
BRIDGE

SHANNON  
BRIDGE

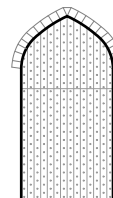
7. HOWLEY'S QUAY

8. DOCKERS MONUMENT

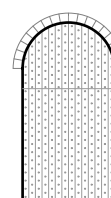
## Start at King John's Castle

**1** First find the doorway. The head of the door is arched. Can you tell whether it is a **round arch** or **pointed arch**? Use the diagrams to help.

**Pointed arch**



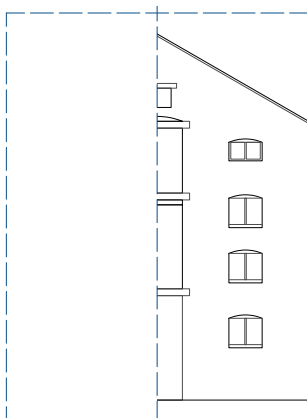
**Round arch**



Answer: \_\_\_\_\_

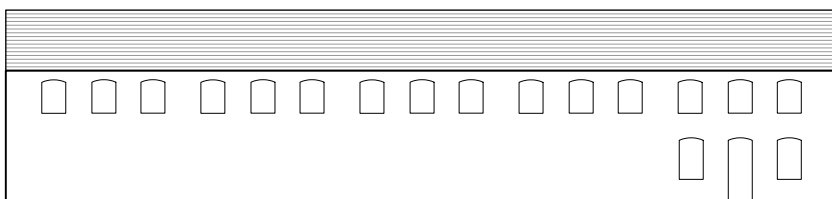
Next, walk towards **Nicholas Street**, stop when you find the visitor centre.

**2** The **gable** face of the building is **symmetrical**, can you fill in the other half? If viewing this on a mobile device, try draw the two halves the same in your notebook.



Continue down Nicholas Street. Don't go too far, and keep looking around. Turn **right** when you find a colourful **mural** and walk through the gateway. (HELP: a mural is a piece of art painted directly onto a wall). Past the mural, you will find a terrace of stone buildings.

**3** This terrace is known as 'The Widow's Alms Houses' **Fill in the missing windows and doors - Do you notice a pattern?**



For more information on Limerick's architecture, visit [www.openhousetimerick.ie](http://www.openhousetimerick.ie) or find us on social media: @OHLimerick @openhousetimerick

To download your own copy, visit [Limerick.ie](http://Limerick.ie) and search SHANNON RIVER TREASURE TRAIL

PRODUCED IN PARTNERSHIP WITH



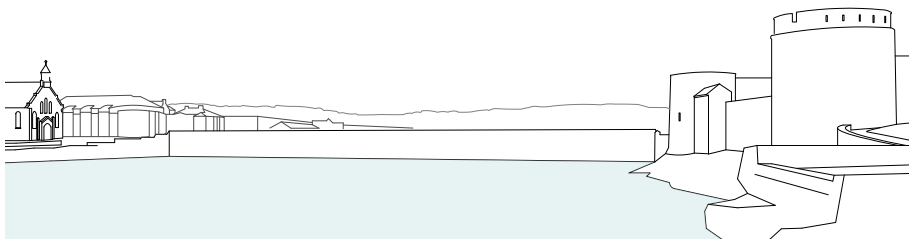
Comhairle Cathrach  
& Contae Luimnigh  
Limerick City  
& County Council

ATLANTIC EDGE

**LIMERICK**  
EUROPEAN EMBRACE

Carefully go down the stairs and follow the **riverside path** to the Limerick City and County Council office.

- 4 Look towards the opposite side of the river, and King John's Castle.  
Oops! Looks like something is missing! Can you fill in Thomond Bridge?

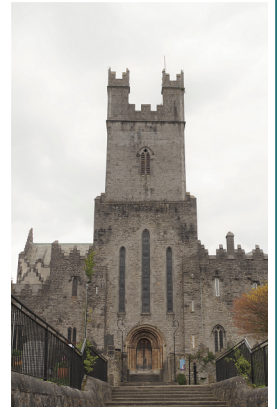


If viewing this on a mobile device, try draw this scene in your notebook.

**DID YOU KNOW?**  
Thomond Bridge was built in 1836

Keep following the path along the river, passing the **former courthouse** on your left.

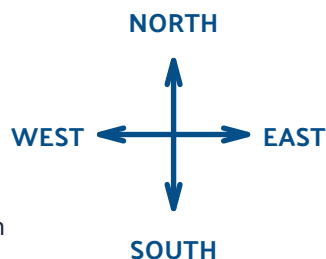
You'll soon see the majestic **St. Mary's Cathedral** in front of you. Did you know that the cathedral was built in **1168**, making it the oldest building in Limerick City still in use!



Next, head to the **Potato Market**, and over the white **Sylvester O'Halloran bridge** to the gardens of the Hunt Museum.

- 5 You have walked over the Sylvester O'Halloran Bridge from **North to South**.

Can you tell which **direction** this side of the Hunt Museum faces? Use the compass points to help.



Answer:

After the Hunt Museum, follow the path alongside the docked boats. Turn under the building to your left when you get to the end of the path and then head to **Arthur's Quay Park**, following the river edge.

- 6 While in Arthur's Quay Park, Can you find a building called **SARSFIELD HOUSE**?



Only one picture is correct.

Is it A, B, or C?

There is a short walk to the next stop. Follow the river south, crossing **under or over Sarsfield bridge**. Continue along the **boardwalk**, passing the statue of Terry Wogan until you find a set of **steps** down to the river. Stop when you find it!

- 7 There are three main bridges in Limerick City. From here, From here you should be able to see both **Sarsfield** bridge and **Shannon** Bridge.  
One was built in **1835** and the other in **1988**.

Which one do you think is older? Use the map on page one to help identify which is which.

Answer: \_\_\_\_\_

- 8 Next, can you find two men hard at work, but not moving?  
**The Dockers' Monument** was installed to celebrate the riverside's industrial heritage.

Can you guess what material it is made from? Tick the correct box.

☐ Timber ☐ Stone ☐ Bronze ☐ Brick



**WELL DONE!**

You have completed the trail.

Answers  
1: Pointed, 2: n/a, 3: window, window, door, window, etc, 4: n/a, 5: West, 6: B, 7: Sarsfield Bridge, 8: Bronze