



Explore Limerick City's  
riverside architecture with  
Open House Limerick

# SHANNON RIVER TREASURE TRAIL

**JUNIOR**

## Before We Start

1 You will need to bring: this map (if you have a printer at home) or some paper (if using your phone), a pencil, and an eraser.

2 Start the trail at King John's Castle. Read the question, find the answer, then follow the directions to find the next stop!

3 Be careful of cars when crossing any roads - Remember the safe cross code!

4 HAVE FUN!

**START HERE**

1. KING JOHN'S CASTLE

2. VISITOR CENTRE

3. ALMS HOUSES

4. CITY and COUNTY  
COUNCIL

ST. MARY'S  
CATHEDRAL

POTATO MARKET

5. THE HUNT MUSEUM

6. ARTHURS QUAY PARK

**DID YOU KNOW?**

King John's Castle  
is over 800 years  
old!

Start at King John's Castle

You will recognise the large stone walls  
but can you find this small detail?

**1**



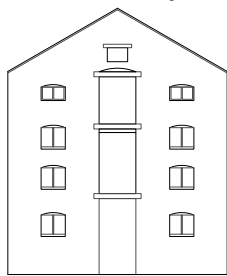
Where on  
the building  
is it?

Answer: \_\_\_\_\_

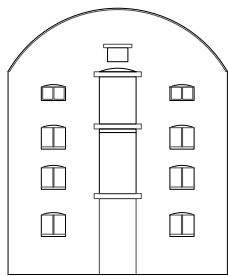
Next, walk towards **Nicholas Street**, stop when you find the visitor centre.

**2** Look at the **gable** end of the building.

What shape is the roof? Tick the correct box.



Pitched

☐


Barrel Vaulted

☐

Continue down Nicholas Street. Don't go too far, and keep looking around. Turn **right** when you find a colourful **mural** and walk through the gateway. (HELP: a mural is a piece of art painted directly onto a wall). Past the mural, you will find a terrace of stone buildings.

**3**

This terrace is known as

'The Widow's Alms Houses'

Can you find how many windows  
are at the **ground** floor level  
(downstairs)?

Answer: \_\_\_\_\_



For more information on Limerick's architecture, visit [www.openhousetimerick.ie](http://www.openhousetimerick.ie)  
or find us on social media: @OHLimerick @openhousetimerick

To download your own copy, visit [Limerick.ie](http://Limerick.ie) and search SHANNON RIVER  
TREASURE TRAIL

PRODUCED IN PARTNERSHIP WITH



Comhairle Cathrach  
& Contae Luimnigh  
Limerick City  
& County Council

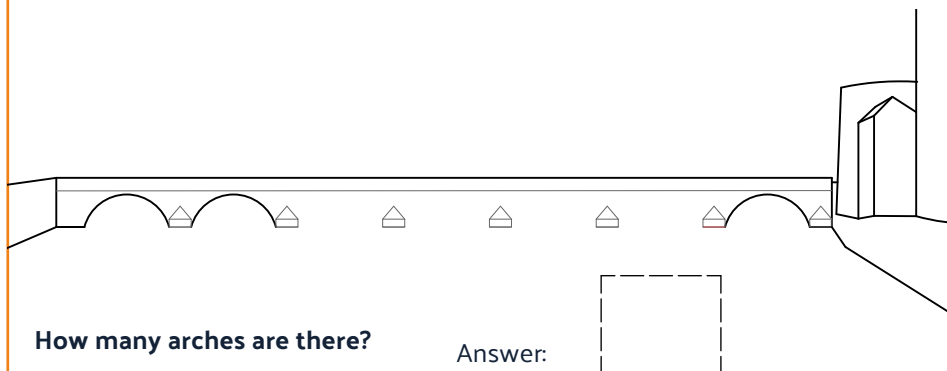
ATLANTIC EDGE

**LIMERICK**  
EUROPEAN EMBRACE

Carefully go down the stairs and follow the **riverside path** to the City and County Council office.

Look towards Thomond Bridge.

**4** Oops! Looks like something is missing! Can you fill in missing arches?



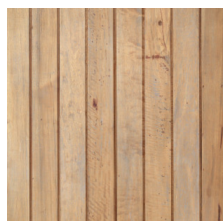
Keep following the path along the river, passing the **former courthouse** on your left.

You'll soon see the majestic **St. Mary's Cathedral** in front of you. Did you know that the cathedral was built in **1168**, making it the oldest building in Limerick City still in use!

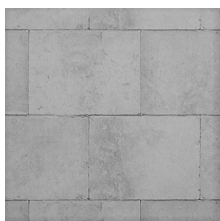


Next, head to the **Potato Market**, and over the white **Sylvester O'Halloran bridge** to the gardens of the **Hunt Museum**.

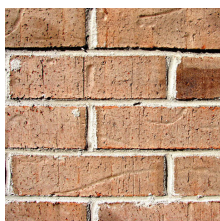
**5** Look carefully at the museum, and the materials below. Which one matches the building?



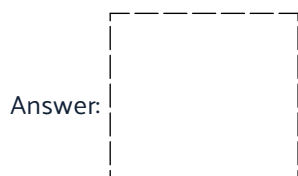
A. Timber



B. Stone



C. Brick



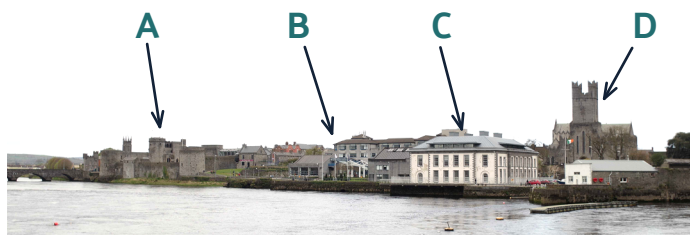
**DID YOU KNOW?**

The Hunt Museum was built as a Customs House over 250 years ago!

After the Hunt Museum, follow the path alongside the docked boats. Turn under the building to your left when you get to the end of the path and then head to **Arthur's Quay Park**, following the river edge.

In Arthur's Quay Park, look at the skyline to the north.

**6** In the boxes below, fill in the correct letter to match the buildings named below.



City & County Council Offices

St.Mary's Cathedral

King John's Castle

Former Courthouse

There is a short walk to the next stop. Follow the river south, crossing **under or over Sarsfield bridge**. Continue along the **boardwalk**, passing the statue of Terry Wogan until you find a set of **steps** down to the river. Stop when you find it!

**7**



Look at the opposite river bank.

Can you spot what is missing?

**HINT**

It is 45 meters tall!

Answer: \_\_\_\_\_

**8** Can you find two men hard at work, but not moving?  
Along Howley's Quay you will find the Dockers' Monument.  
Can you find what year it was made?

Answer: \_\_\_\_\_



**WELL DONE!**

You have completed the trail.

Answers  
1: On the door, 2: Pitched, 3: 10 windows, 4: 7 arches, 5: Stone, 6: A=Castle, B=Council Offices, C=Former Courthouse, D=St.Mary's Cathedral, 7: Chimney stack, 8: 2010