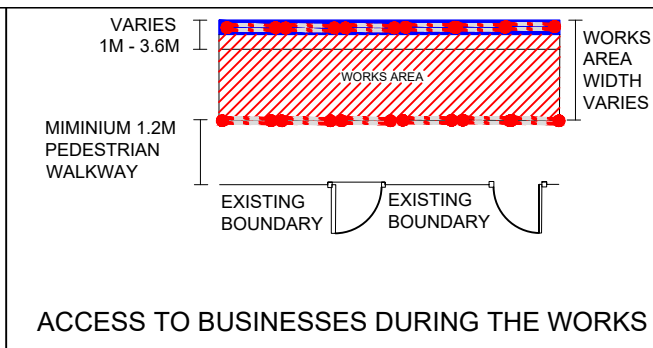
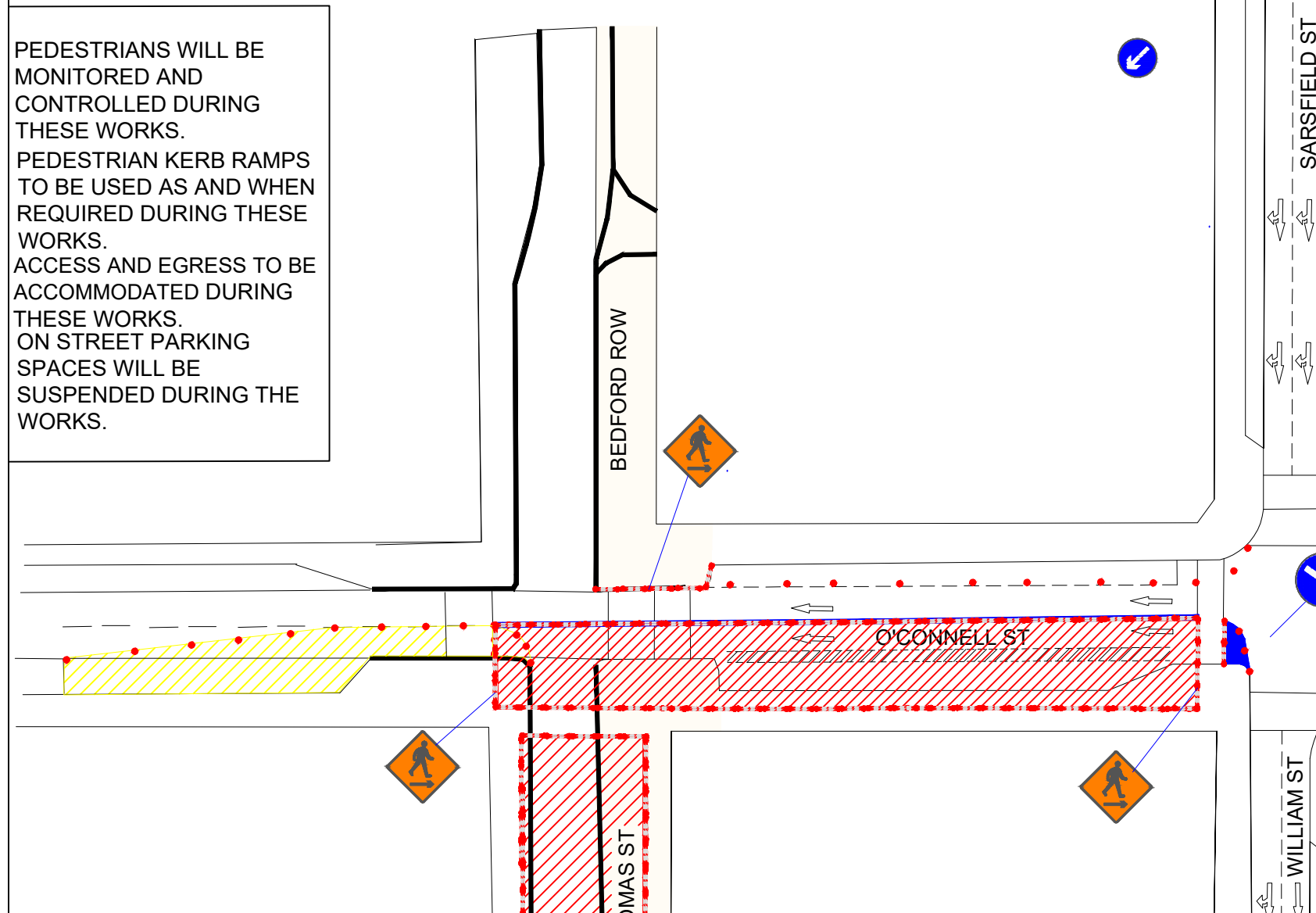
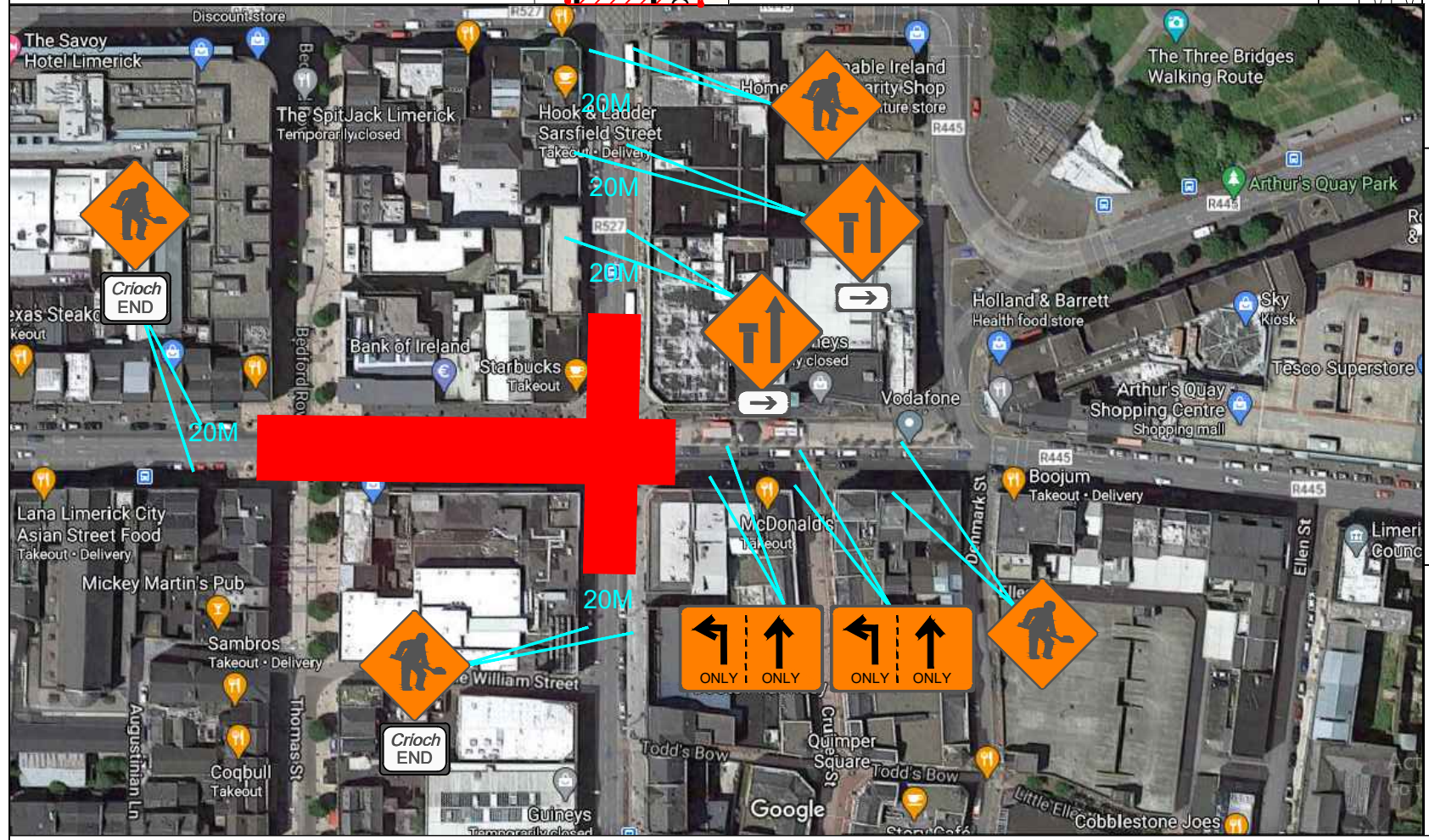
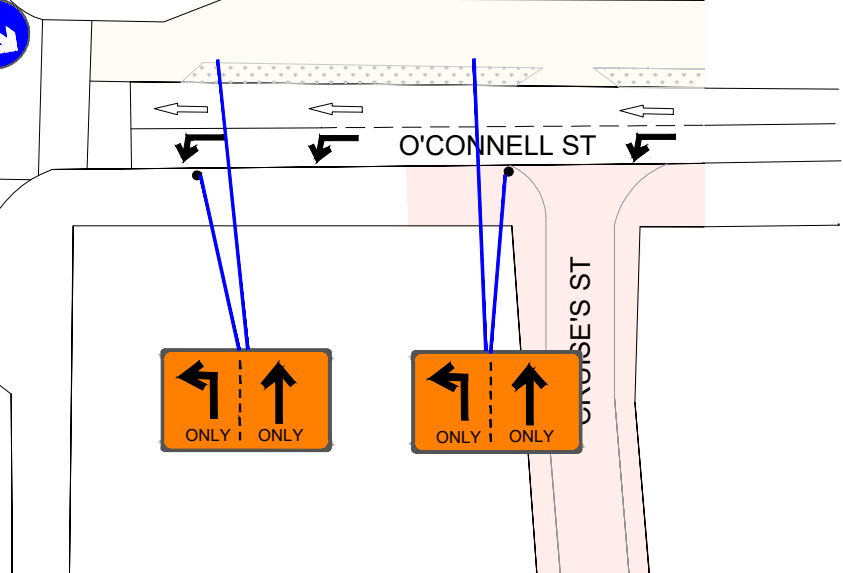


# BLOCK 2 PHASE 1

PEDESTRIANS WILL BE MONITORED AND CONTROLLED DURING THESE WORKS.  
 PEDESTRIAN KERB RAMPS TO BE USED AS AND WHEN REQUIRED DURING THESE WORKS.  
 ACCESS AND EGRESS TO BE ACCOMMODATED DURING THESE WORKS.  
 ON STREET PARKING SPACES WILL BE SUSPENDED DURING THE WORKS.



DESIGN PARAMETERS	
ROAD LEVEL:	LEVEL 1(iv)
ROADWORKS TYPE:	TYPE A
SPEED LIMIT:	50km/h
TEMPORARY SIGNS	
SIGN VISIBILITY:	60M
NUMBER OF SIGNS:	3
ADVANCE SIGN SPACING:	20M
MINIMUM SIGN SIZE:	600mm
RATE OF TAPER	
TAPER AT LANE:	1 IN 10
TAPER AT HARD SHOULDER:	N/A
TRANSITION LENGTH:	N/A
SAFETY ZONE	
LONGITUDINAL:	15M
LATERAL:	0.5M
MAXIMUM CONE SPACING	
AT TAPERS:	3M
LONGITUDINAL:	6M
LAMP SPACING DURING HOURS OF DARKNESS	
AT TAPERS:	6M
LONGITUDINAL:	12M
MIN LANE WIDTH:	3.00M
TRAFFIC MANAGEMENT SYSTEM	
METHOD:	LANE CLOSURE
LEGEND:	
WORKS AREA	CONES
SAFETY ZONE	PEDESTRIAN
TAPER	



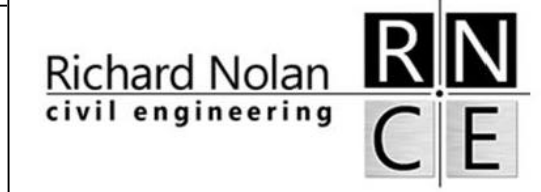
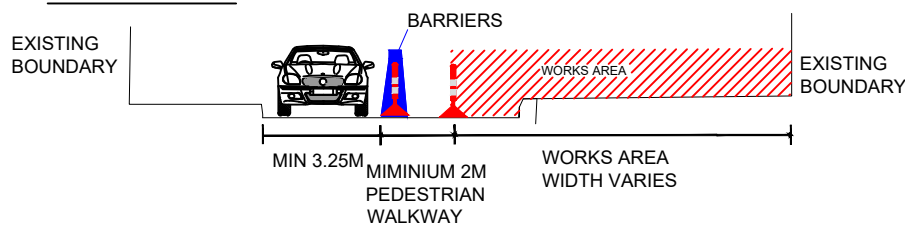
### GENERAL NOTES:

- THIS TRAFFIC MANAGEMENT PLAN MAY ONLY BE IMPLEMENTED BY A TEMPORARY TRAFFIC OPERATIONS SUPERVISOR WHO MUST CARRY OUT A SITE RISK ASSESSMENT TO MODIFY THE MEASURES DESCRIBED TO SUIT ACTUAL SITE CONDITIONS BEFORE IMPLEMENTATION.
- THE TEMPORARY TRAFFIC OPERATIONS SUPERVISOR MUST BE IN POSSESSION OF THE VALID CONSTRUCTION SKILLS REGISTRATION CARD 'SIGNING, LIGHTING, AND GUARDING AT ROADWORKS' CONSTRUCTION REGULATIONS 2006.
- THIS TRAFFIC MANAGEMENT PLAN HAS BEEN DRAFTED ON A PRELIMINARY BASIS AND DOES NOT TAKE ACCOUNT OF THE SCALES ASSOCIATED WITH THE DIFFERENT PHASES OF THE PROJECT. ARRANGEMENTS FOR MATERIAL DELIVERY, SPOIL REMOVAL, AND TEMPORARY ACCESS HAVE NOT BEEN DEVELOPED INTO THE PLAN AS THEY WERE NOT ADVISED AT THE TIME OF PREPARATION.
- IN ORDER THAT THE REQUIREMENTS AS SET PER SECTION 17(2) 2005 ACT ARE SATISFIED, FURTHER ALTERATION TO THE PLAN MUST BE ADVISED BY THE PSDP AS PER CONSTRUCTION REGULATIONS 2006 PS 5 REGS 16-17 AND REG 97 (2a & 2b) RESPECTIVELY. IN ADDITION THE PSDP SHOULD FURTHER DIRECT ANY CHANGES AS THE PROJECT PROGRESSES.
- ALL WORKS ARE TO BE CARRIED OUT IN ACCORDANCE WITH LOCAL AUTHORITY REQUIREMENTS AND TO BE INCLUDED IN THE SITE SPECIFIC SAFETY & HEALTH PLAN.
- SITE INSPECTIONS AND MAINTENANCE OF THE TRAFFIC MANAGEMENT PLAN SO FAR AS THEY ALSO CONFORM TO THE CHAPTER 8 2019. THE SIGNAGE THEREFORE MUST REFLECT THOSE CONSIDERED FOR DESIGN POST SUBMISSION.
- CONTRACTOR TO CARRY OUT A SITE RISK ASSESSMENT PRIOR TO THE INSTALLATION OF THE TRAFFIC MANAGEMENT PLAN TO ENSURE THAT CONDITIONS REFLECT THOSE CONSIDERED FOR DESIGN POST SUBMISSION.
- ALL SIGNS USED (AND MANUFACTURED AFTER 01.09.19) MUST CONFORM TO THOSE SPECIFIED IN THE TRAFFIC MANAGEMENT PLAN SO FAR AS THEY ALSO CONFORM TO THE CHAPTER 8 2019. THE SIGNAGE THEREFORE MUST INCORPORATE MICRO PRISMATIC RETROREFLECTIVE SHEETING.
- WK 052



WILL BE USED WHEN A DESIGNATED WORKS ACCESS IS REQUIRED. REFER TO CHAPTER 8 2019 FOR USAGE.

### SECTION A-A



Client:		SHARERIDGE		
Project:		O'CONNEL STREET IMPROVEMENT WORKS		
Title:		BLOCK 2 PHASE 1 A REVISION		
Director:	SN	Proj. Man:	SP	Checked:
Scale:	N.T.S	Drawn by:	SD	Date:
				27/04/2020
DRAWING No:		222014-TMP- 001		
Rev:	Description:	By:	Checked:	Date
000	INITIAL ISSUE	SD	SD	27/04/2021