

HSE MID WEST COMMUNITY HEALTHCARE

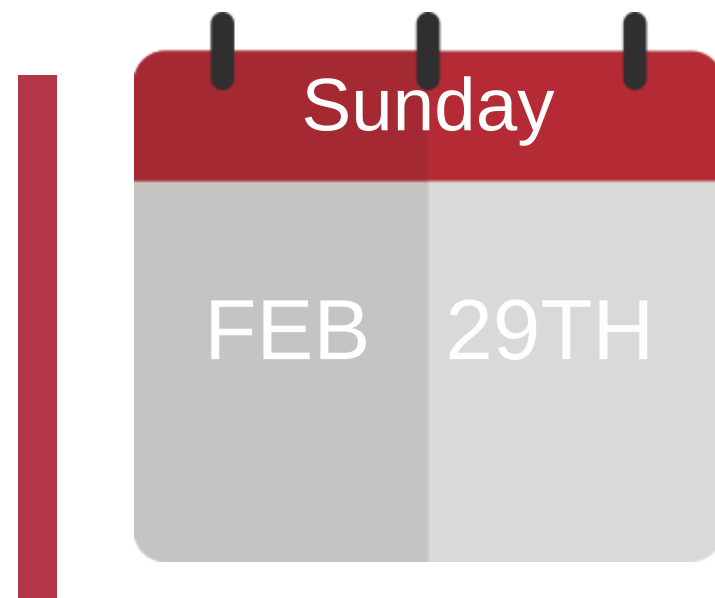
Maurice Hoare, A/Chief Officer



March 2021

HSE Mid West
Community Healthcare

COVID-19



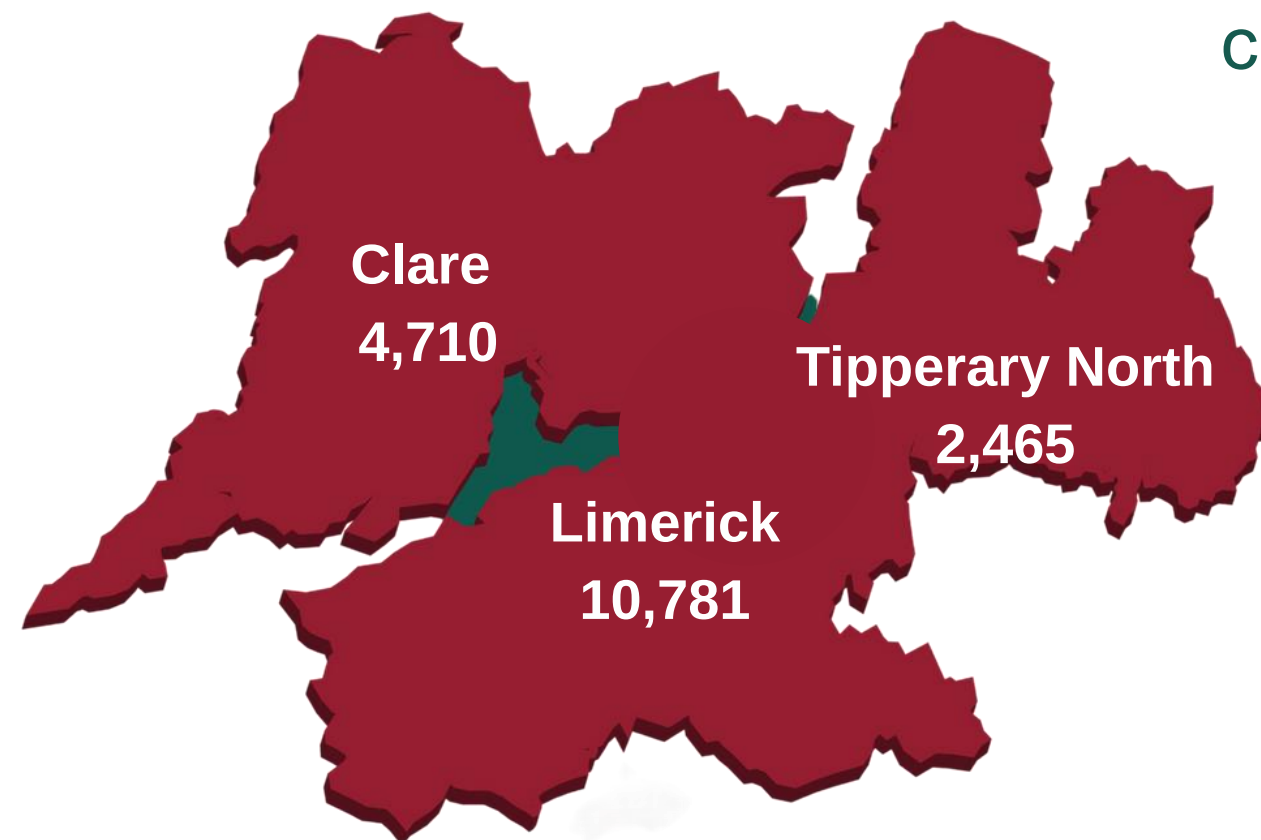
First case confirmed in Ireland



First case in the Mid-West confirmed in 2020



Confirmed cases to midnight on
18th March 2021:
17,956



Breakdown of 17,956 cases by county

17,956 - Confirmed cases on 18th March 2021
373 Deaths - Predominantly in long term Residential Centres



HSE Mid West
Community Healthcare

COVID– 19 MID WEST COMMUNITY HEALTHCARE

RESPONSE



COVID Response Support Team(CRST)

- Management of Covid Outbreaks across Residential Settings
- Provides Advice, Guidance, PPE, IPC, Training, Staffing & Accommodation.
- Supporting 45 Private Nursing Homes in Mid West (2300 beds)

Testing/swabbing

- 3 Test Centres operating in Limerick, Clare & North Tipperary
- Limerick Centre - Drive / Walk Through, Wicks, Ballysimon Road,
Capacity: 12 bays – Open 7 days per week
- 140,685 Tests for Mid West (March 20' – March 21')
- 85,000 Tests in Limerick.
- Other Testing On going ; Mass Testing, Serial Testing, Pop up
Testing



COVID– 19 MID WEST COMMUNITY HEALTHCARE

RESPONSE



• Isolation Facilities

- Dedicated Isolation facilities in place across residential services.
- Cleeve's Site, Limerick City (proposal to stand down soon.)
- City West, Dublin (For General Population.)

• PPE

- Dedicated PPE Lead in place for HSE Mid West Community Healthcare
- PPE supplied across all Healthcare Settings/ In Home Services/Private Nursing Homes.
- Contingency Emergency PPE stock provided to all facilities.

• Psychosocial Support

- Helpline available 5 days per week for HSE staff/Private Nursing Home Staff/ Section 38/39 Staff/ Public bereaved 1850 420420

COVID– 19 MID WEST COMMUNITY HEALTHCARE



- **Vaccination Programme**

- Roll out of Vaccination Programme – Chief Clinical Officer
- Mid West Integrated Vaccination Steering Group
- Governance of all vaccination workstreams inclusive of the Healthcare Workers Programme, the RCF/SP1 Programme and Centralised Vaccination Centre Programme.

Vaccination delivery to-date :

- Total Number Vaccinated (1st Dose), in Mid West Community Healthcare up to 15th March 2021 - 6,899 (Pfizer & AstraZeneca)
- Total Number Vaccinated (2nd Dose), total vaccinated up to 15th March 2021 - 5,729

COVID– 19 MID WEST COMMUNITY HEALTHCARE



- **Vaccination Roll Out**

- Residential Care Facilities Programme (RCF) commenced- 7th January 2021(For HSE Residents & Staff in Older Persons Residential Care Facilities & Private Nursing Homes)
- The RCF Programme has supported the delivery of vaccinations to :
 - 9 HSE Residential Care Facilities/ 45 Private Nursing Homes
 - Persons aged over 65 in Non Designated Long Term Care Settings (e.g. Religious Orders, Addiction Services)
 - Residents in Disability Settings and Mental Health facilities aged over 65

COVID– 19 MID WEST COMMUNITY HEALTHCARE



- **Vaccination Roll Out**

- Special Programme 1 (SP1) commenced with effect from 8th March 2021 for Service Users in Disability and Mental Health services aged from 16 – 64 yrs. commencing with residential services (Level 1) and progressing to day care services (Level 2)
- AZ vaccine temporarily paused this week due to concerns raised
 - Awaiting advice of EMA.

Winter Plan /Enhanced Community Care Programme(ECC)



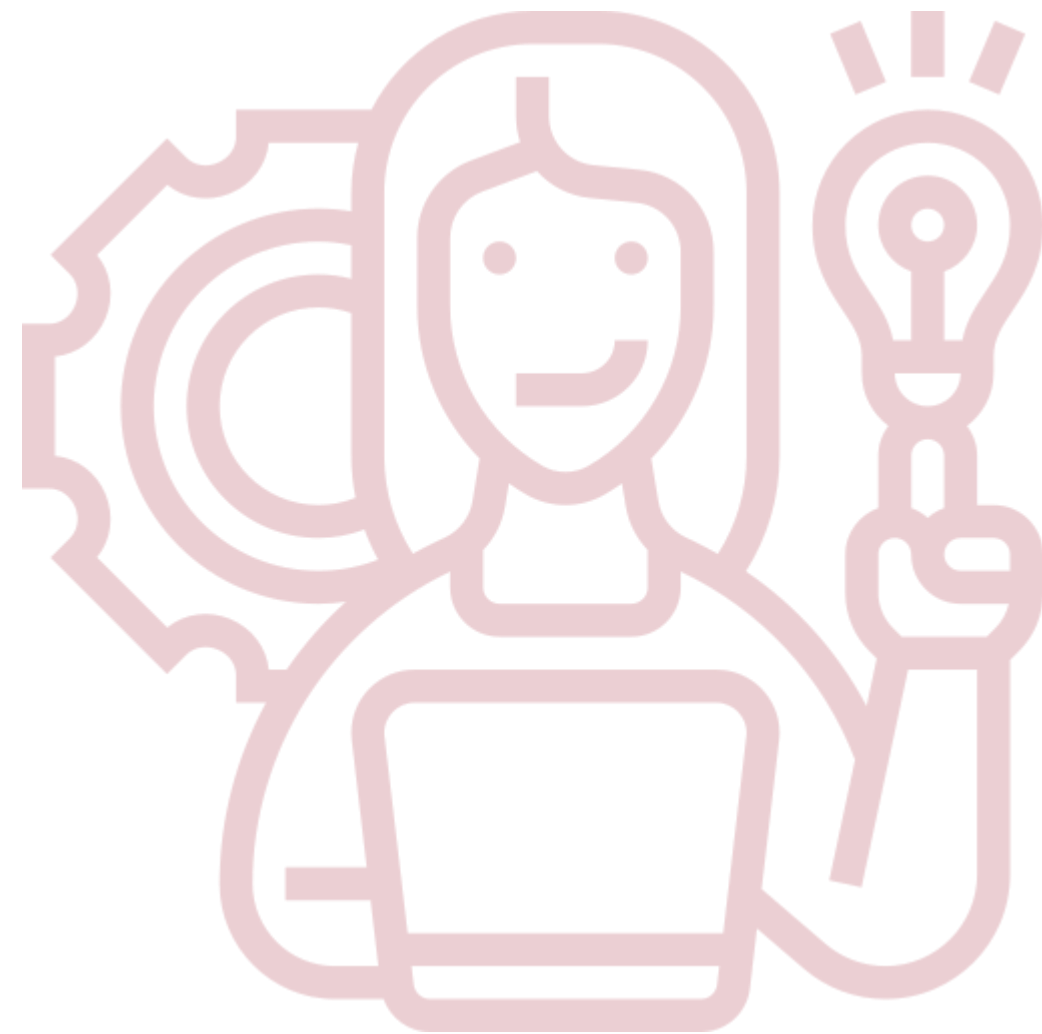
Winter Plan/ECC Programme

Significant Investment in Enhanced Community Care Programme

- Structural Reform with Community Health Networks (CHN's)
- Creation of specialist Ambulatory Hubs for the management of Chronic Disease and Older People with complex needs
- Specialist integrated Care Teams for Older people (ICPOP)
- Home Support Hours
- Additional Bed Capacity – 25 beds
- Aids and Appliances – Additional Funding

**HSE Mid West
Community Healthcare**

MAJOR INITIATIVES



MAJOR INITIATIVES

- Resumption of Services – (A Safe Return to Health Services)
- Assessment of Needs - – (Backlog Project)
- Significant Recruitment Campaign underway
- Major Capital Works/Developments
 - St Camillus' New 75 bed hospital under construction
 - Primary Care Centre's
 - Croom: Due to open in approx. 2 months
 - **Newcastle West** under construction: Due to open late 2022
 - Dooradoyle & Ennis Road progressing legal agreements,

CHALLENGES



CHALLENGES

- Recruitment and Retention of Staff
- Covid Related Absence – Numbers Declining
- Infrastructure: Accommodation / ICT
- Ability to Respond to COVID 19 Surges
- Business Continuity/ Resumption in a COVID context

THANK YOU

- STAFF
- PARTNER AGENCIES- LOCAL AUTHORITY AND AN GARDA SIOCHANA
- VOLUNTARY SECTOR
- PUBLIC REPRESENTATIVES
- PUBLIC
- MEDIA



@CommHealthMW

HSE Mid West
Community Healthcare

QUESTIONS?



HSE Mid West
Community Healthcare
