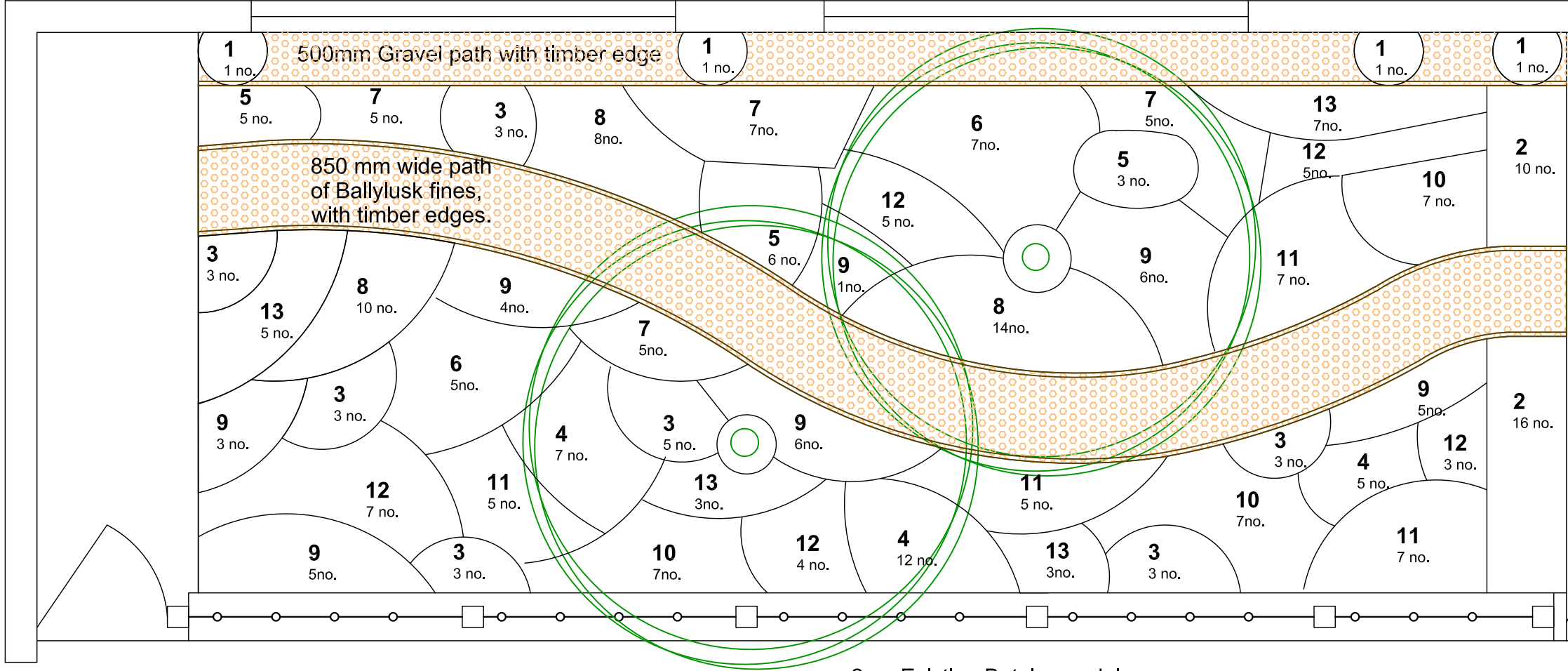


Rev. no.	Rev. description	Date	Sign	Chkd
1				
2				
3				



Code	Name	Quality	Quantity
1.	Parthenocissus tricuspidata	2-3L	4
2.	Crataegus monogyna	0.6-0.9 b/r	26
Double staggered row, planted at 300mm spacings			
3.	Leucanthemum × superbum	2L	24
4.	Echinacea purpurea	2L	24
5.	Geranium 'Johnson's Blue'	2L	14
6.	Helleborus argutifolius	2L	12
7.	Heuchera 'Bella Notte'	2L	22
8.	Lamium maculatum	2L	32
9.	Persicaria 'Firetail'	2L	30
10.	Rudbeckia 'Little goldstar'	2L	21
11.	Salvia × sylvestris 'Caradonna'	2L	24
12.	Sedum 'Autumn Joy'	2L	24
13.	Stipa arundinacea	2L	18
A	Crocus × cultorum 'Jeanne d'Arc' (white)		750
B	Muscari armeniacum 'Blue Spike'		750
C	Galanthus sp. (to be positioned around base of trees only)		500

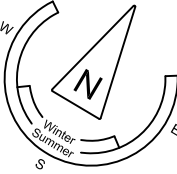
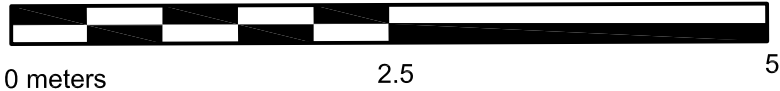
Existing site is to be manually cleared of all existing plants and weeds, no chemicals to be used, no machinery allowed within the root zone of the existing trees. Hand digging only around trees, with minimal disturbance of roots.

Soil on site is to be retained (with the exception of path areas) and soil improver added, with mulch on completion.

Notes: Soil to be improved to depth of 400mm with 50mm of high grade quality bark mulch on completion.

Bulbs location to be approved on site at construction stage by LA.

For path detail and soil improvement detail, see drawing no. T390-103 existing Situation Plan drg. T390-101



An Chomhairle Oidhreachta
The Heritage Council



Comhairle Cathrach
& Contae Luimnigh
Limerick City
& County Council

Client: Anne Goggin LCCC
Project: Pollinator Garden
Limerick Civic Offices
Limerick
Drg Title: Planting Plan
Stage: Tender Stage

Drg. No.: T390-102
Scale: 1:50 @ A3
Date: 2019, December 10th

Drawn By: MW Checked by: DR



DAVE RYAN
LANDSCAPE ARCHITECT

12 Barrington Street
Limerick
www.daveryan.ie

Tel.: 061 59 00 01
Mob.: 087 314 52 70
Email: info@daveryan.ie