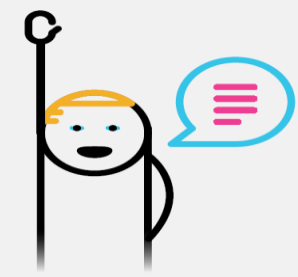


1. To start

Have you got an idea or opinion?



Are you part of a group that share this opinion?



Register your group with the PPN



To register with Limerick PPN, go to the [Limerick PPN website](#). The on-line registration form is on the website. Your group/organisation should meet certain membership conditions. Membership of Limerick PPN is made of eligible groups/organisations – not individuals.

The core function of the PPN is to be the independent and formal structure to elect and support community representatives on Council committees, in particular:

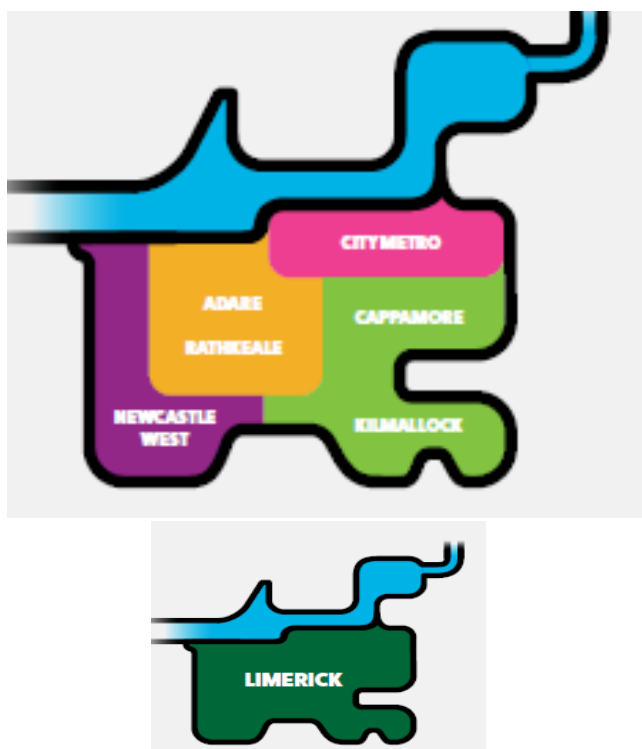
1. [Strategic Policy Committees](#)
2. [Joint Policing Committee](#)
3. Limerick [Local Community Development Committee](#) (LCDC)

2. PPN structure

Three pillars/sectors:



Four Municipal Districts:



So when your group registers, you will say what pillar/sector and which Municipal District it is in.

3. How the PPN works

a) Plenary:

The PPN membership is called the Plenary. The Plenary is the overall decision-making body of the PPN. All members have an equal say on the business of Limerick PPN. The Plenary usually meets twice a year.

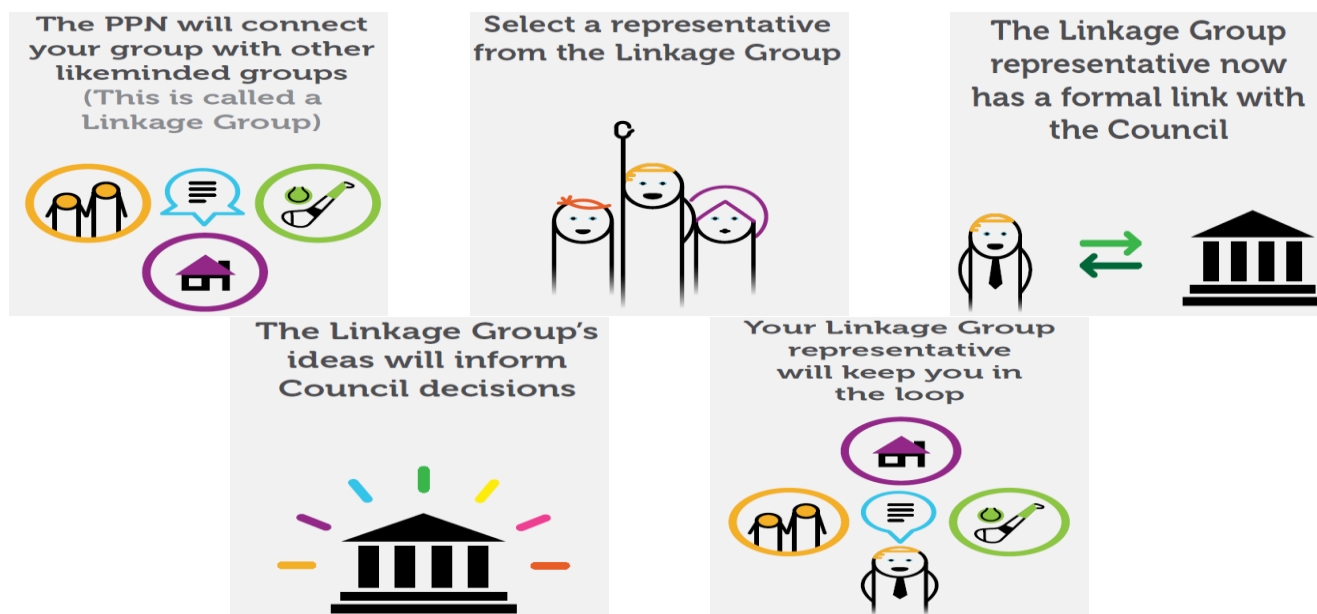
b) Secretariat:

A group of people elected by the Plenary manages the PPN on behalf of the PPN membership. This group is called the Secretariat. The Secretariat is helped by a Resource Worker and Support Worker who are answerable to the Secretariat. The membership of the Secretariat is made up of 10 people:

- 2 from each of the 3 pillars/sectors
- 1 from each of the Municipal Districts

c) Linkage Groups:

- Linkage Groups are networks of PPN member groups/organisations who are interested in themes such as housing, transport, tourism, planning, sport and recreation, culture, environment, social inclusion, rural development and so on.
- Currently, there is one Linkage Group created for each Council committee which has seats allocated to Limerick PPN representatives.
- Any PPN member group/organisation can have representation on any Linkage Group. A Linkage Group elects, supports and gives direction to their representative(s) on a Council committee.
- Linkage Groups operate under the auspices of the Plenary and report to the Plenary via the Secretariat.



d) PPN User Guide:

The Limerick PPN is funded by both the Department of Rural and Community Development and Limerick City and County Council who expect the PPN to operate to the national [PPN User Guide](#). This is currently being reviewed with a new set of guidelines due in late 2019.

e) Other Useful resources:

1. [Public Participation Networks Annual Report 2018](#) (very useful information on PPN's in this)
2. [Sustainable, Inclusive and Empowered Communities A five-year strategy to support the community and voluntary sector in Ireland 2019-2024](#) (see in particular Objective 7 which is all about PPN's)
3. [Charities Governance Code](#) (while not a registered charity, Limerick PPN should operate to the 6 principles of good governance as described in this important code)