



Our Ref: 0068_08_00037

21st June 2019

The Cathaoirleach and Each Member of the Newcastle West Municipal District

**RE: N21 Killarney Pole to Barnagh Road Safety Scheme
Disposal of 0.415 Ha to John Hough
at Ballintubrid, Newcastle West, Co Limerick**

A Chomhairleoir, a chara,

I refer to the above.

You will be aware that the road was realigned at Ballintubrid, Newcastle West following the construction of the N21 Killarney Pole to Barnagh Road Safety Scheme. On completion of these works land totalling 0.415 Ha has been deemed surplus to the requirements of the scheme. The Mid West National Road Design Office has had discussions in the interim with John Hough and is now agreeable to arrange the transfer of the above land to his ownership, subject to Council approval. See attached Drawing No. 068/55/0038 Revision O.

The consideration is nil in this case.

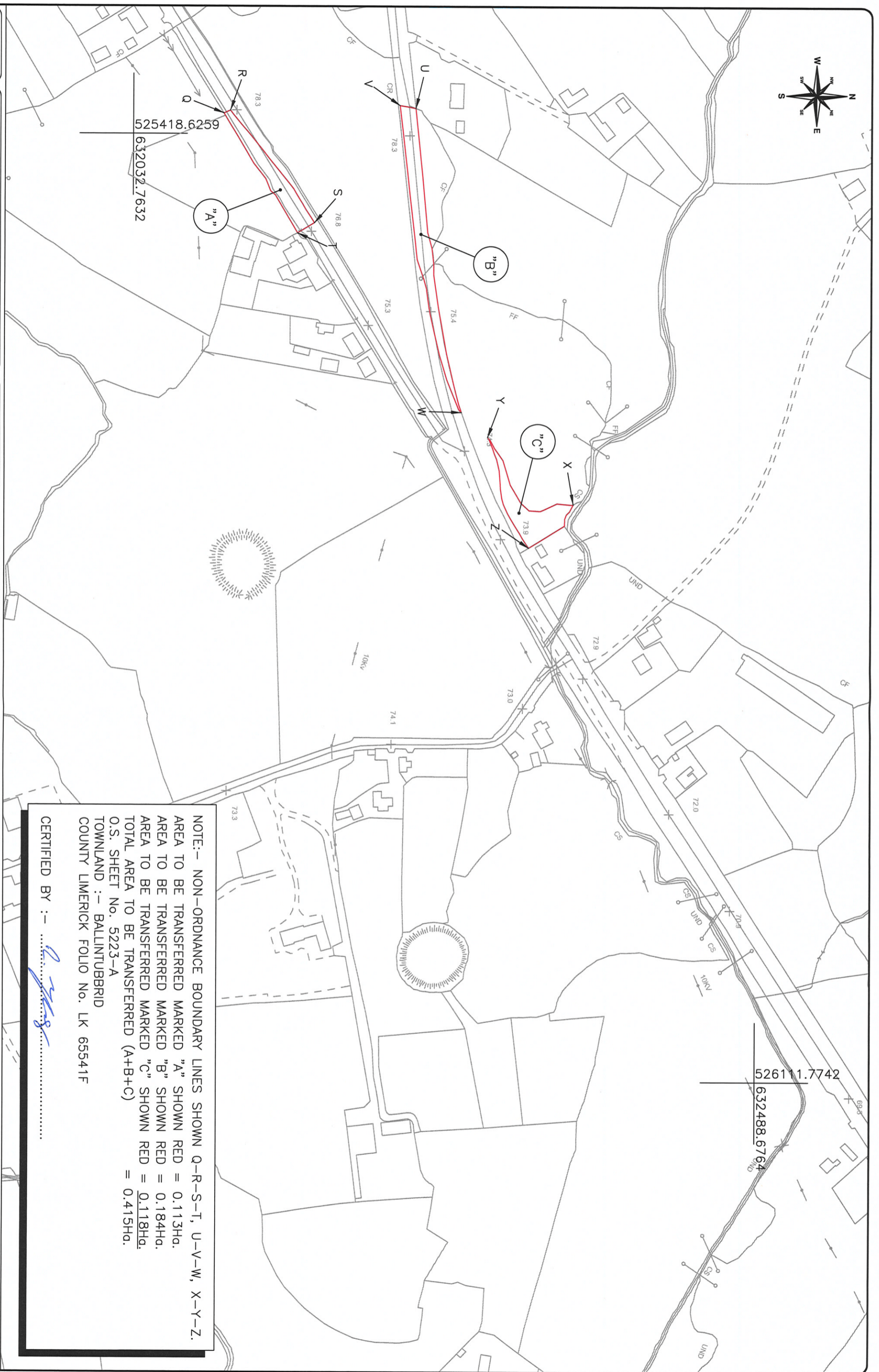
The Council will be responsible for payment of reasonable legal fees in relation to the transfer of lands. A wayleave shall be retained to access services to this land.

It is the intention of the Mid West National Road Design Office to place a Section 183 resolution on the agenda of the next meeting of Limerick City and County Council recommending the disposal of the above land measuring 0.415 Ha to John Hough as outlined above.

Is mise le meas,

Tim Fitzgerald
Senior Engineer

Encl.



NOTE:- NON-ORDNANCE BOUNDARY LINES SHOWN Q-R-S-T, U-V-W, X-Y-Z.
 AREA TO BE TRANSFERRED MARKED "A" SHOWN RED = 0.113Ha.
 AREA TO BE TRANSFERRED MARKED "B" SHOWN RED = 0.184Ha.
 AREA TO BE TRANSFERRED MARKED "C" SHOWN RED = 0.118Ha.
 TOTAL AREA TO BE TRANSFERRED (A+B+C) = 0.415Ha.
 O.S. SHEET No. 5223-A
 TOWNLAND :- BALLINTUBBRID
 COUNTY LIMERICK FOLIO No. LK 65541F

CERTIFIED BY :- *[Signature]*

TIP
 Transport Infrastructure Programme
 Comhairle Cathrach
 & Contae Lúimnigh
 Limerick City
 & County Council

NWD
 National Road Design Office
 110 RING NATIONAL ROAD
 DESIGN OFFICE
 LISSAKILTA HOUSE
 DUBLIN 15, IRELAND
 Tel: 01-8560000
 e-mail: info@ndwdo.ie

NOTE:-
 1) THIS DRAWING IS THE PROPERTY OF LIMERICK CITY & COUNTY COUNCIL. IT IS TO BE USED ONLY FOR THE PURPOSES SPECIFIED HEREIN.
 2) ALL LINES ARE REFERRED TO ORDINANCE SURVEY DATA.
 3) FOR THE PURPOSES OF THIS DRAWING, THE DIMENSIONS SHOWN ARE TO BE TAKEN AS SHOWN UNLESS OTHERWISE SPECIFIED.
 4) ORDINANCE SURVEY SHEET NO. 5223-A, 5223-B, 5223-C, 5223-D, 5223-E, 5223-F, 5223-G, 5223-H, 5223-I, 5223-J, 5223-K, 5223-L, 5223-M, 5223-N, 5223-O, 5223-P, 5223-Q, 5223-R, 5223-S, 5223-T, 5223-U, 5223-V, 5223-W, 5223-X, 5223-Y, 5223-Z, 5223-AA, 5223-AB, 5223-AC, 5223-AD, 5223-AE, 5223-AF, 5223-AG, 5223-AH, 5223-AI, 5223-AJ, 5223-AL, 5223-AM, 5223-AN, 5223-AO, 5223-AP, 5223-AQ, 5223-AR, 5223-AS, 5223-AT, 5223-AU, 5223-AV, 5223-AW, 5223-AX, 5223-AY, 5223-AZ, 5223-BA, 5223-BB, 5223-BC, 5223-BD, 5223-BE, 5223-BF, 5223-BG, 5223-BH, 5223-BI, 5223-BJ, 5223-BL, 5223-BM, 5223-BN, 5223-BO, 5223-BP, 5223-BQ, 5223-BR, 5223-BS, 5223-BT, 5223-BU, 5223-BV, 5223-BW, 5223-BX, 5223-BY, 5223-BZ, 5223-CA, 5223-CB, 5223-CC, 5223-CD, 5223-CE, 5223-CF, 5223-CG, 5223-CH, 5223-CI, 5223-CJ, 5223-CL, 5223-CM, 5223-CN, 5223-CO, 5223-CP, 5223-CQ, 5223-CR, 5223-CS, 5223-CT, 5223-CU, 5223-CV, 5223-CW, 5223-CX, 5223-CY, 5223-CZ, 5223-DA, 5223-DB, 5223-DC, 5223-DD, 5223-DE, 5223-DF, 5223-DG, 5223-DH, 5223-DI, 5223-DJ, 5223-DL, 5223-DM, 5223-DN, 5223-DO, 5223-DP, 5223-DQ, 5223-DR, 5223-DS, 5223-DT, 5223-DU, 5223-DV, 5223-DW, 5223-DX, 5223-DY, 5223-DZ, 5223-EA, 5223-EB, 5223-EC, 5223-ED, 5223-EE, 5223-EF, 5223-EG, 5223-EH, 5223-EI, 5223-EJ, 5223-EL, 5223-EM, 5223-EN, 5223-EO, 5223-EP, 5223-EQ, 5223-ER, 5223-ES, 5223-ET, 5223-EU, 5223-EV, 5223-EW, 5223-EX, 5223-EY, 5223-EZ, 5223-FA, 5223-FB, 5223-FC, 5223-FD, 5223-FE, 5223-FF, 5223-FG, 5223-FH, 5223-FI, 5223-FJ, 5223-FL, 5223-FM, 5223-FN, 5223-FO, 5223-FP, 5223-FQ, 5223-FR, 5223-FS, 5223-FT, 5223-FU, 5223-FV, 5223-FW, 5223-FX, 5223-FY, 5223-FZ, 5223-GA, 5223-GB, 5223-GC, 5223-GD, 5223-GE, 5223-GF, 5223-GG, 5223-GH, 5223-GI, 5223-GJ, 5223-GL, 5223-GM, 5223-GN, 5223-GO, 5223-GP, 5223-GQ, 5223-GR, 5223-GS, 5223-GT, 5223-GU, 5223-GV, 5223-GW, 5223-GX, 5223-GY, 5223-GZ, 5223-HA, 5223-HB, 5223-HC, 5223-HD, 5223-HE, 5223-HF, 5223-HG, 5223-HI, 5223-HJ, 5223-HL, 5223-HM, 5223-HN, 5223-HO, 5223-HP, 5223-HQ, 5223-HR, 5223-HS, 5223-HT, 5223-HU, 5223-HV, 5223-HW, 5223-HX, 5223-HY, 5223-HZ, 5223-IA, 5223-IB, 5223-IC, 5223-ID, 5223-IE, 5223-IF, 5223-IG, 5223-IH, 5223-II, 5223-IJ, 5223-IL, 5223-IM, 5223-IN, 5223-IO, 5223-IP, 5223-IQ, 5223-IR, 5223-IS, 5223-IT, 5223-IU, 5223-IV, 5223-IW, 5223-IX, 5223-IY, 5223-IZ, 5223-JA, 5223-JB, 5223-JC, 5223-JD, 5223-JE, 5223-JF, 5223-JG, 5223-JH, 5223-JI, 5223-JJ, 5223-JL, 5223-JM, 5223-JN, 5223-JO, 5223-JP, 5223-JQ, 5223-JR, 5223-JS, 5223-JT, 5223-JU, 5223-JV, 5223-JW, 5223-JX, 5223-JY, 5223-JZ, 5223-KA, 5223-KB, 5223-KC, 5223-KD, 5223-KE, 5223-KF, 5223-KG, 5223-KH, 5223-KI, 5223-KJ, 5223-KL, 5223-KM, 5223-KN, 5223-KO, 5223-KP, 5223-KQ, 5223-KR, 5223-KS, 5223-KT, 5223-KU, 5223-KV, 5223-KW, 5223-KX, 5223-KY, 5223-KZ, 5223-LA, 5223-LB, 5223-LC, 5223-LD, 5223-LE, 5223-LF, 5223-LG, 5223-LH, 5223-LI, 5223-LJ, 5223-LL, 5223-LM, 5223-LN, 5223-LO, 5223-LP, 5223-LQ, 5223-LR, 5223-LS, 5223-LT, 5223-LU, 5223-LV, 5223-LW, 5223-LX, 5223-LY, 5223-LZ, 5223-MA, 5223-MB, 5223-MC, 5223-MD, 5223-ME, 5223-MF, 5223-MG, 5223-MH, 5223-MI, 5223-MJ, 5223-ML, 5223-MM, 5223-MN, 5223-MO, 5223-MP, 5223-MQ, 5223-MR, 5223-MS, 5223-MT, 5223-MU, 5223-MV, 5223-MW, 5223-MX, 5223-MY, 5223-MZ, 5223-NA, 5223-NB, 5223-NC, 5223-ND, 5223-NE, 5223-NF, 5223-NG, 5223-NH, 5223-NI, 5223-NJ, 5223-NL, 5223-NM, 5223-NN, 5223-NO, 5223-NP, 5223-NQ, 5223-NR, 5223-NS, 5223-NT, 5223-NU, 5223-NV, 5223-NW, 5223-NX, 5223-NY, 5223-NZ, 5223-OA, 5223-OB, 5223-OC, 5223-OD, 5223-OE, 5223-OF, 5223-OG, 5223-OH, 5223-OI, 5223-OJ, 5223-OL, 5223-OM, 5223-ON, 5223-OO, 5223-OP, 5223-OQ, 5223-OR, 5223-OS, 5223-OT, 5223-OU, 5223-OV, 5223-OW, 5223-OX, 5223-OY, 5223-OZ, 5223-PA, 5223-PB, 5223-PC, 5223-PD, 5223-PE, 5223-PF, 5223-PG, 5223-PH, 5223-PI, 5223-PJ, 5223-PL, 5223-PM, 5223-PN, 5223-PO, 5223-PP, 5223-PQ, 5223-PR, 5223-PS, 5223-PT, 5223-PU, 5223-PV, 5223-PW, 5223-PX, 5223-PY, 5223-PZ, 5223-QA, 5223-QB, 5223-QC, 5223-QD, 5223-QE, 5223-QF, 5223-QG, 5223-QH, 5223-QI, 5223-QJ, 5223-QL, 5223-QM, 5223-QN, 5223-QO, 5223-QP, 5223-QL, 5223-QM, 5223-QN, 5223-QO, 5223-QP, 5223-QQ, 5223-QR, 5223-QS, 5223-QU, 5223-QV, 5223-QW, 5223-QX, 5223-QY, 5223-QZ, 5223-RA, 5223-RB, 5223-RC, 5223-RD, 5223-RE, 5223-RF, 5223-RG, 5223-RH, 5223-RI, 5223-RJ, 5223-RL, 5223-RM, 5223-RN, 5223-RO, 5223-RP, 5223-RQ, 5223-RR, 5223-RS, 5223-RT, 5223-RU, 5223-RV, 5223-RW, 5223-RX, 5223-RY, 5223-RZ, 5223-SA, 5223-SB, 5223-SC, 5223-SD, 5223-SE, 5223-SF, 5223-SG, 5223-SH, 5223-SI, 5223-SJ, 5223-SL, 5223-SM, 5223-SN, 5223-SO, 5223-SP, 5223-SQ, 5223-SR, 5223-SS, 5223-ST, 5223-SU, 5223-SV, 5223-SW, 5223-SX, 5223-SY, 5223-SZ, 5223-TA, 5223-TB, 5223-TC, 5223-TD, 5223-TE, 5223-TF, 5223-TG, 5223-TH, 5223-TI, 5223-TJ, 5223-TL, 5223-TM, 5223-TN, 5223-TO, 5223-TP, 5223-TQ, 5223-TR, 5223-TS, 5223-TT, 5223-TU, 5223-TV, 5223-TW, 5223-TX, 5223-TY, 5223-TZ, 5223-UA, 5223-UB, 5223-UC, 5223-UD, 5223-UE, 5223-UF, 5223-UG, 5223-UH, 5223-UI, 5223-UJ, 5223-UL, 5223-UM, 5223-UN, 5223-UO, 5223-UP, 5223-UQ, 5223-UR, 5223-US, 5223-UT, 5223-UY, 5223-UZ, 5223-VA, 5223-VB, 5223-VC, 5223-VD, 5223-VE, 5223-VF, 5223-VG, 5223-VH, 5223-VI, 5223-VJ, 5223-VL, 5223-VM, 5223-VN, 5223-VO, 5223-VP, 5223-VQ, 5223-VR, 5223-VS, 5223-VT, 5223-VU, 5223-VV, 5223-VW, 5223-VX, 5223-VY, 5223-VZ, 5223-WA, 5223-WB, 5223-WC, 5223-WD, 5223-WE, 5223-WF, 5223-WG, 5223-WH, 5223-WI, 5223-WJ, 5223-WL, 5223-WM, 5223-WN, 5223-WO, 5223-WP, 5223-WQ, 5223-WR, 5223-WS, 5223-WT, 5223-WU, 5223-WV, 5223-WX, 5223-WY, 5223-WZ, 5223-XA, 5223-XB, 5223-XC, 5223-XD, 5223-XE, 5223-XF, 5223-XG, 5223-XH, 5223-XI, 5223-XJ, 5223-XL, 5223-XM, 5223-XN, 5223-XO, 5223-XP, 5223-XQ, 5223-XR, 5223-XS, 5223-XT, 5223-XU, 5223-XV, 5223-XW, 5223-XX, 5223-XY, 5223-XZ, 5223-YA, 5223-YB, 5223-YC, 5223-YD, 5223-YE, 5223-YF, 5223-YG, 5223-YH, 5223-YI, 5223-YJ, 5223-YL, 5223-YM, 5223-YN, 5223-YO, 5223-YP, 5223-YQ, 5223-YR, 5223-YS, 5223-YT, 5223-YU, 5223-YV, 5223-YW, 5223-YX, 5223-YY, 5223-YZ, 5223-ZA, 5223-ZB, 5223-ZC, 5223-ZD, 5223-ZE, 5223-ZF, 5223-ZG, 5223-ZH, 5223-ZI, 5223-ZJ, 5223-ZL, 5223-ZM, 5223-ZN, 5223-ZO, 5223-ZP, 5223-ZQ, 5223-ZR, 5223-ZS, 5223-ZT, 5223-ZU, 5223-ZV, 5223-ZW, 5223-ZX, 5223-ZY, 5223-ZZ

| Rev. | Description | By | Chk. | App. | Date |
|------|--------------------------|----|------|------|----------|
| 0 | ISSUED FOR LAND DISPOSAL | | | | 18.08.18 |

Project: N21 KILLARNEY POLE TO BARNAGH ROAD SAFETY
 Title: LAND DISPOSAL FROM LIMERICK CITY & COUNTY COUNCIL
 TO JOHN HOUGH (DS126/12b/12c)
 Drawn: R. Hough
 Scale: 1:2500
 Date: 02.04.18
 Checked: G.C.
 The Project Ref. No.: LC/11/7945
 Drawing No.: 0068/55/0036
 Revision: 0