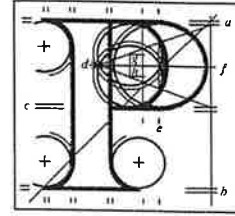


Our Ref: ABP-304028-19



An
Bord
Pleanála

Connolly Family & Others
Connolly Menswear
12-14 Patrick Street
Limerick

Date: 11th June 2019

Re: 10 year permission for opera site re-development including a mixed use scheme of primarily offices, supported by a range of retail and non-retail services, cafes/restaurants, licenced premises, apart-hotel, civic/cultural uses (including a city library in the existing town hall), residential, refurbishment of existing protected buildings and open space.
Site bounded by Michael Street, Ellen Street, Rutland Street, Patrick Street and Bank Place, Limerick.

Dear Sir / Madam,

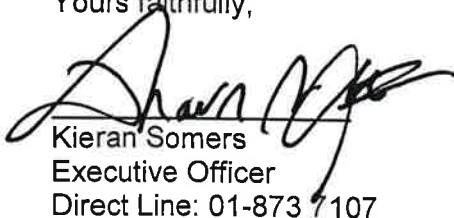
An Bord Pleanála has received your recent submission in relation to the above mentioned proposed development and will take it into consideration in its determination of the matter. A receipt for the fee lodged is enclosed.

Please note that the proposed development shall not be carried out unless the Board has approved it or approved it with conditions.

If you have any queries in relation to the matter, please do not hesitate to contact the undersigned officer of the Board.

Please quote the above mentioned An Bord Pleanála reference number in any correspondence or telephone contact with the Board.

Yours faithfully,


Kieran Somers
Executive Officer
Direct Line: 01-873 7107

Teil
Glao Áitiúil
Facs
Láithreán Gréasáin
Ríomhphost

Tel
LoCall
Fax
Website
Email

(01) 858 8100
1890 275 175
(01) 872 2684
www.pleanala.ie
bord@pleanala.ie

64 Sráid Maoilbhríde
Baile Átha Cliath 1
D01 V902

64 Marlborough Street
Dublin 1
D01 V902

28th May 2019.

Opera Development

Limerick City

Planning Application

An Bord Pleanala.

AN BORD PLEANÁLA	
LDG-	016297-19
ABP-	
30 MAY 2019	
Fee: €	50 Type: cheque
Time:	9.34 By: Post

The local traders on Patrick Street Limerick extend their full support to the redevelopment of the Opera site in Limerick City. This will represent a massive regeneration of our City Centre and a much needed uplift and confidence boost.

The public library, public plazas, social and retail amenities in the heart of our city will generate a new heartbeat from which we can all benefit and enjoy. Activity and Footfall will result in this long awaited and much sought after regeneration.

The flow of architecture and design is to be commended, giving our proud Riverside city a new lease of life. It will be recognisance to the Mid West region.

Us adjacent retailers fully welcome and support the application.

Yours Sincerely,

THE CONNOLLY FAMILY, CONNOLLY MENSWEAR, 12-14 PATRICK ST.
IRISH HANDCRAFTS LTD 26 PATRICK ST. GERALDINE DUFF
The Red Hen 15 Patrick St.
Sketch of Patrick St. [Signature]