

All levels referenced to Malin Head Datum
KEY PLAN



ISSUE/REVISION HISTORY

I/R	DATE	DESCRIPTION
-	Jan 19	Planning Submission

PROJECT NUMBER

60568520

SHEET TITLE

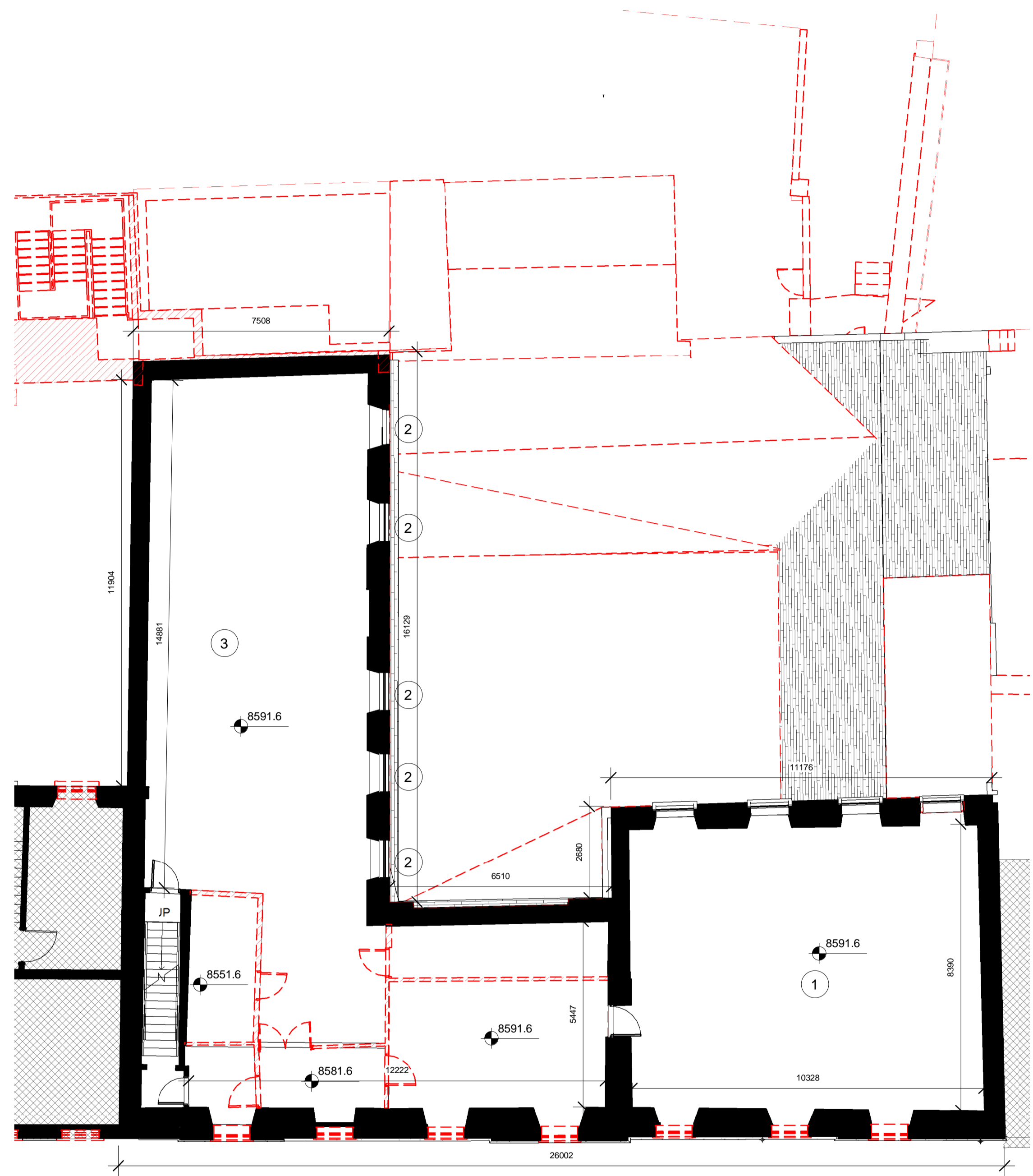
Parcel 2B - Existing / Demolition First Floor Plan

SCALE 1 : 100@A1

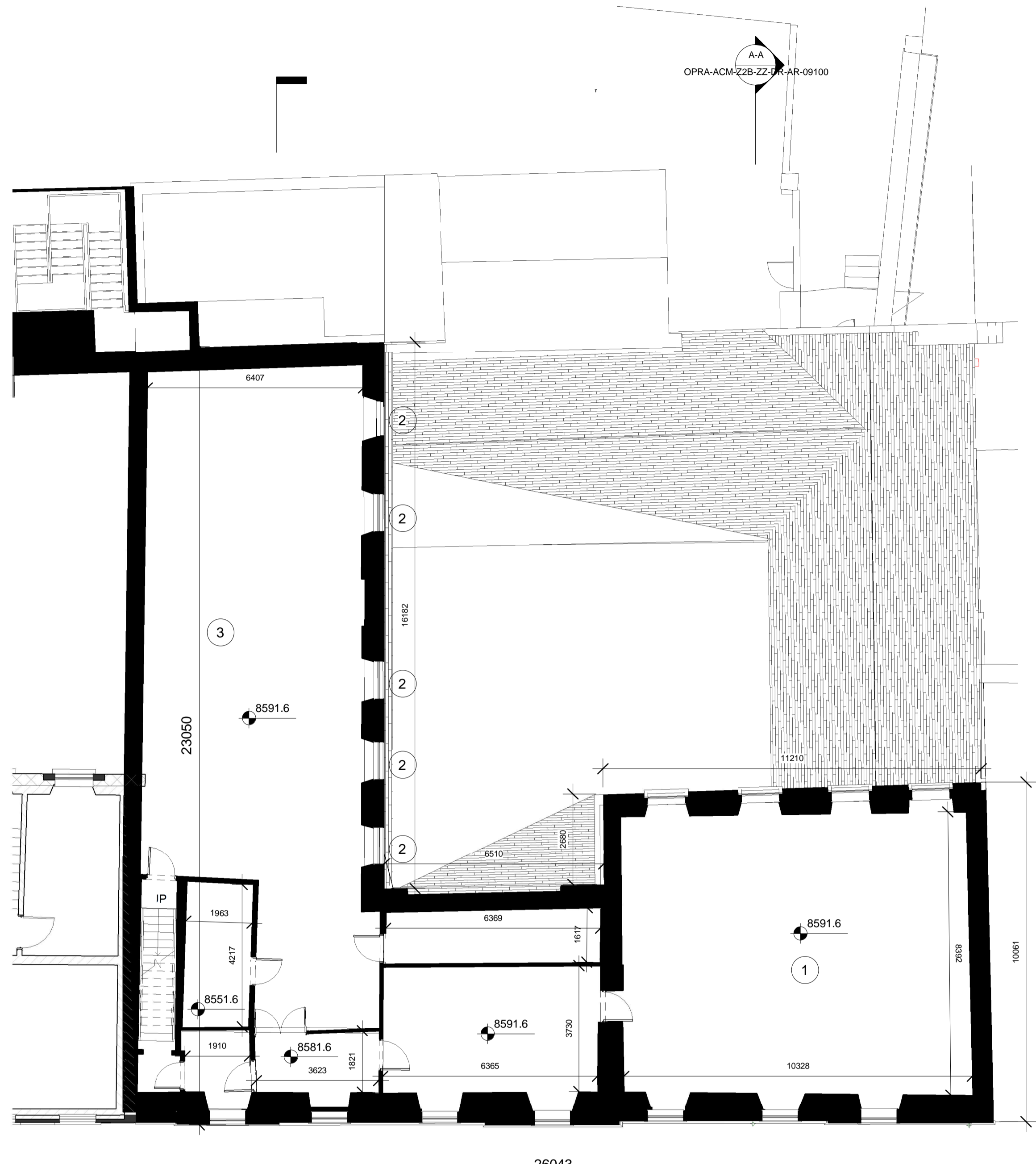
SHEET NUMBER REV

OPRA-ACM-Z2B-01-DR-AR-09001

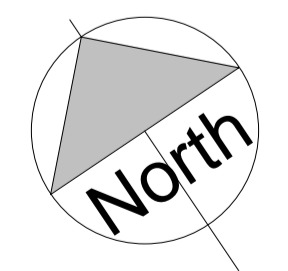
This drawing has been prepared for the use of AECOM's client. It may not be used, modified, reproduced or relied upon by third parties, except as agreed by AECOM or as required by law. AECOM accepts no responsibility, and denies any liability whatsoever, to any party that uses or relies on this drawing without AECOM's express written consent. Do not scale this document. All measurements must be obtained from the stated dimensions.



2 | Demolition First Floor Plan
SCALE: 1 : 100



1 | Existing First Floor Plan
SCALE: 1 : 100



Significant Items

- ① Exposed Trusses
- ② Sash Windows
- ③ Cast Iron Columns

Key

- Existing Construction
- Demolished

ISO A1 594mm x 841mm
Approved: Approver
Checked: Checker
Project Management Initials: Designer
Last Plotted: 25/01/2019 15:20:30
Filename: C:\Users\adrian.wheeler\Documents\OPRA-ACM-Z2B-ZZ-M3-AR-0001_sdr\iang1971.rvt
Printed on: %Post-Consumer Recycled Content Paper