

All levels referenced to Malin Head Datum
KEY PLAN



ISSUE/REVISION HISTORY

I/R	DATE	DESCRIPTION
-	Jan 19	Planning Submission

PROJECT NUMBER

60568520

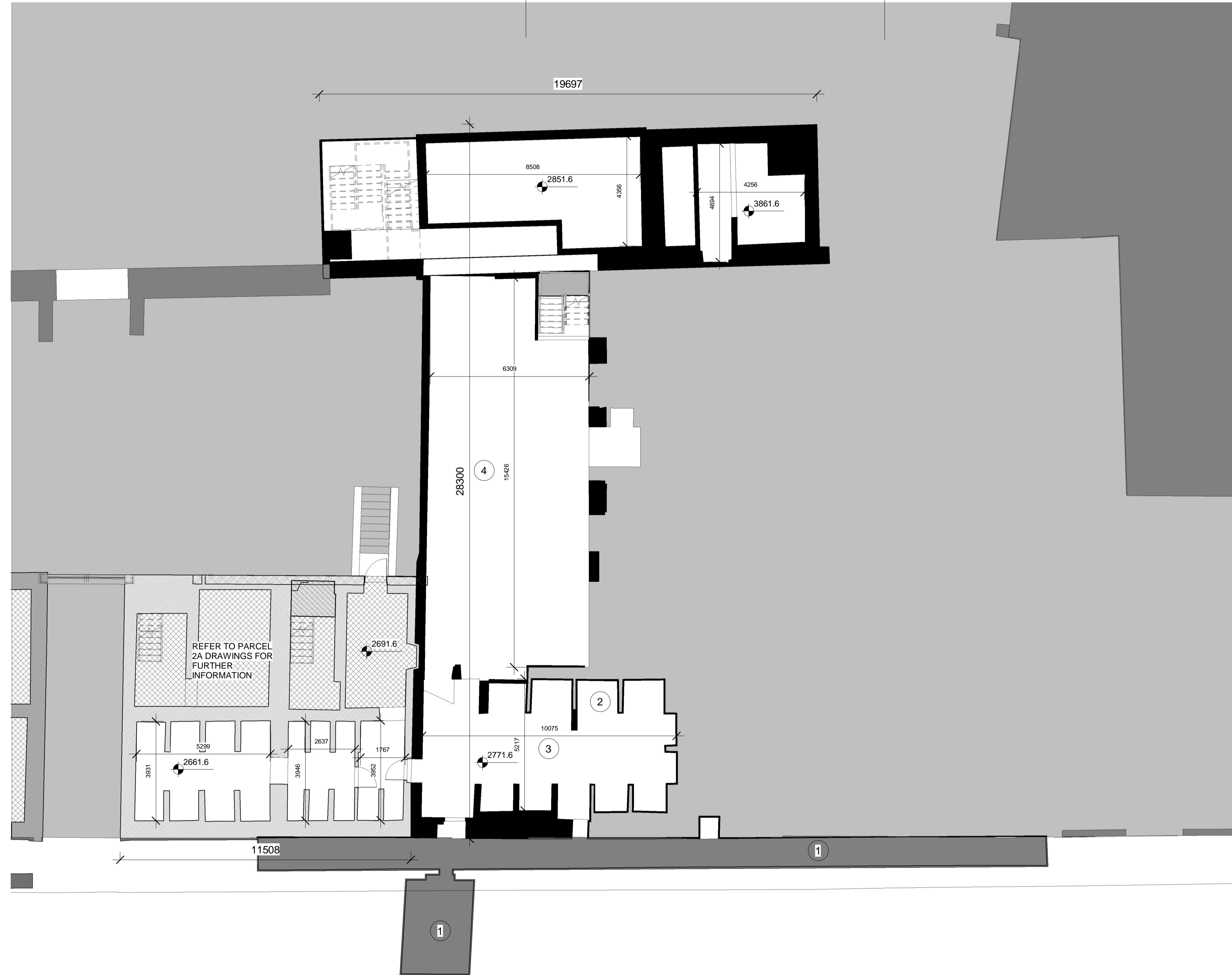
SHEET TITLE

Parcel 2B - Existing Basement Floor Plan

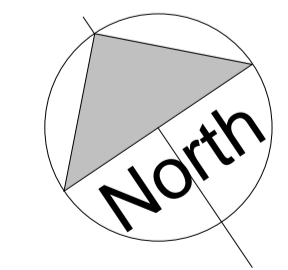
SCALE 1 : 100@A1

SHEET NUMBER REV

OPRA-ACM-Z2B-BF-DR-AR-09020 1-



1 Existing Basement Floor Plan
SCALE: 1 : 100



Significant Items

- ① Cellar below pavement & street
- ② Brick Cellars
- ③ Flag Stone Floor
- ④ Flag Stone Floor

Key

- Existing Construction
- Demolished

This drawing has been prepared for the use of AECOM's client. It may not be used, modified, reproduced or relied upon by third parties, except as agreed by AECOM or as required by law. AECOM accepts no responsibility, and denies any liability whatsoever, to any party that uses or relies on this drawing without AECOM's express written consent. Do not scale this document. All measurements must be obtained from the stated dimensions.

ISO A1 594mm x 841mm
Approved: Approver
Checked: Checker
Project Management Initials: Designer
Last Plotted: 25/01/2019 15:22:12
Filename: C:\Users\stadian.wheelier\Documents\OPRA-ACM-Z2B-ZZ-M3-AR-0001_sdr\iang1971.rvt
Printed on: %Post-Consumer Recycled Content Paper