

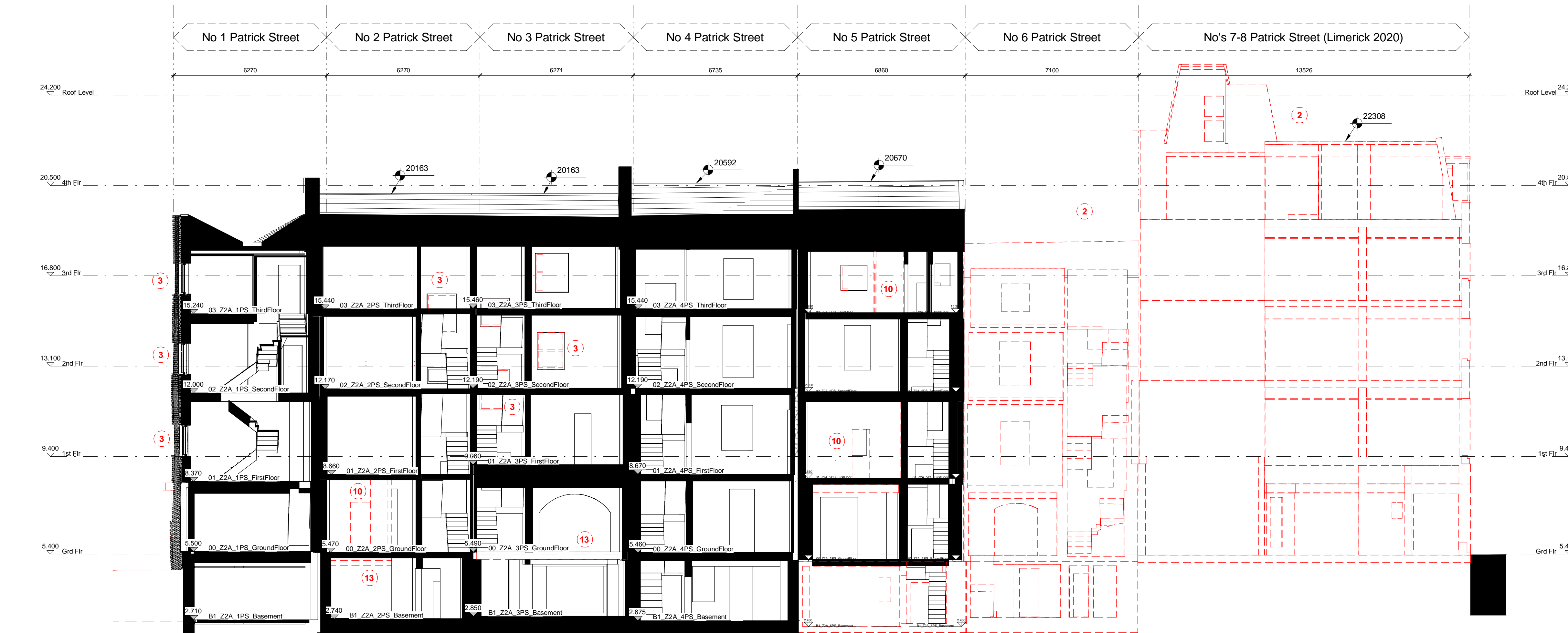
1 Section A-A
SCALE: 1: 100

Demolition Key (Elevations):

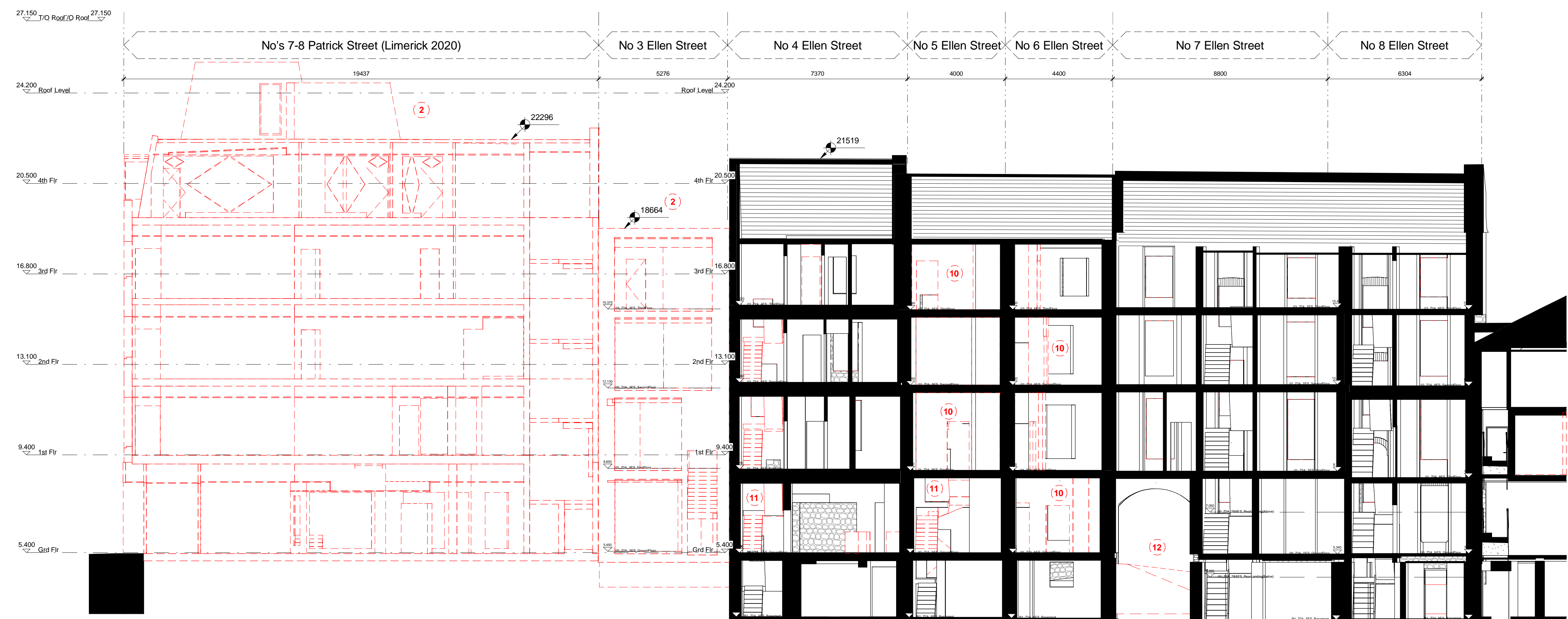
- 1 Existing rear extensions (former part of the later building interventions) to be taken down.
- 2 No. 6 Patrick Street, No. 3 Ellen Street and Limerick 2020 building to be demolished in its entirety.
- 3 Window / door to be carefully removed to retain brickwork around features. Repairs with new if applicable - refer to Proposed Elevation drawings for details. Windows on Patrick Street Gable to be reinstated as Georgian windows.
- 4 Hoarding and any remaining elements of shop fronts to be removed. Brickwork to be made good to suit new shop front.
- 5 Timber boarding to windows to be carefully removed.
- 6 Retain existing historic shop front and repair in accordance with Conservation Officer's recommendations.
- 7 Remove existing rainwater pipe as part of No. 6 Patrick Street demolitions.
- 8 Refer to site drawings for details of demolition works.
- 9 Remove render coat.
- 10 Internal partition(s) / doors removed, openings made good in line with Conservation Officer's requirements where applicable.
- 11 Internal staircase removed to No 4 + 5 Ellen Street, as to be converted into Aparthotel suites with new staircases housed within atrium.
- 12 Site levels reconfigured to suite new 5.40m GL to rear of Patrick + Ellen Streets.
- 13 Floor reconfigured to suite insertion of new stair to basement level from ground floor level.
- 14 Original door and surround to be restored.
- 15 Windows to be replaced in 2 Patrick Street.
- 16 All windows to be replaced on Ellen Street.

Key

- Demolished
- Existing Construction

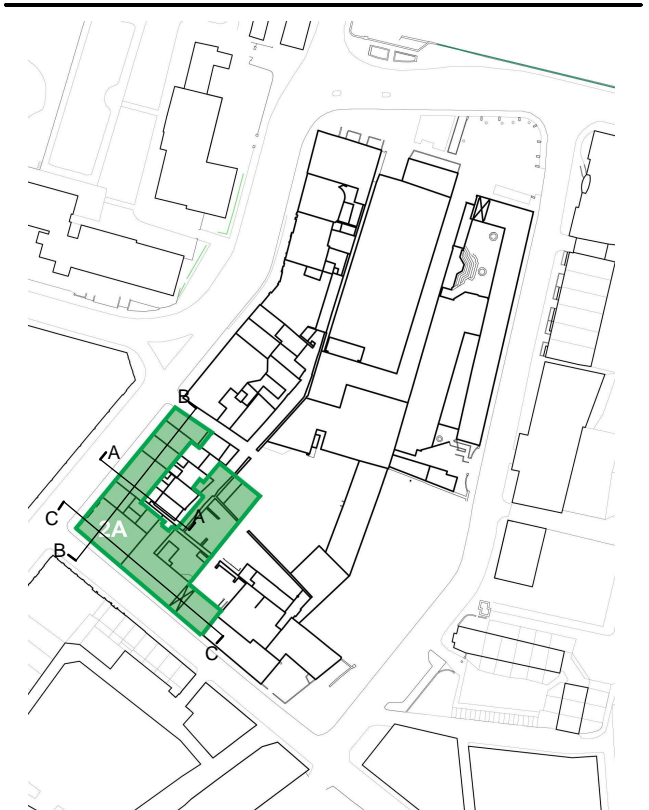


2 Section B-B
SCALE: 1: 100



3 Section C-C
SCALE: 1: 100

All levels referenced to Malin Head Datum
KEY PLAN



ISSUE/REVISION HISTORY

IR	DATE	DESCRIPTION
1	Jan 19	Planning Submission

PROJECT NUMBER
60568520

SHEET TITLE
Parcel 2A - Existing Sections A-A, B-B & C-C

1 : 100@A0
SHEET NUMBER
OPRA-ACM-ZZA-ZZ-DR-AR-091001