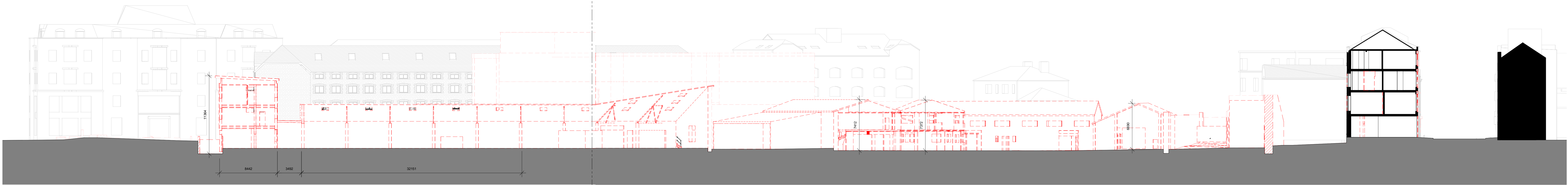


DENOTES CHANGE FROM SECTION C-C PART I & PART II



C-C Existing Site Section CC Part 1
SCALE: 1 : 200

2 Existing Site Section CC Part 2
SCALE: 1 : 200

← SECTION CC PART 1 SECTION CC PART 2 →

Key
 Demolished

This drawing has been prepared for the use of AECOM's client. It may not be used, modified, reproduced or relied upon by third parties, except as agreed by AECOM or as required by law. AECOM accepts no responsibility, and denies any liability whatsoever, to any party that uses or relies on this drawing without AECOM's express written consent. Do not scale this document. All measurements must be obtained from the stated dimensions.

ISSUE/REVISION HISTORY		
IR	DATE	DESCRIPTION
1	Jan 19	Planning Submission

Note: All levels referenced to Malin Head Datum

CONSULTANT
COADY ARCHITECTS

CLIENT
Limerick City & County Council

PROJECT
Opera Site

SHEET TITLE
Existing Site Section C-C (Part 1 & 2)

PROJECT NUMBER 6056820
SCALE 1:200 @ A0

This document has been prepared in accordance with the scope of AECOM's appointment with its client and is subject to the terms of that appointment. AECOM accepts no liability for any use of this document other than by its client and only for the purposes for which it was prepared and provided. Only written dimensions shall be used.
© AECOM

AECOM
Clarence Street West Building
Clarence Street West
Belfast BT2 7GP
United Kingdom
Tel +44 (0)28 9073 5551
Tel +44 (0)28 9007270
www.aecom.com

AECOM

SHEET NUMBER
OPRA-ACM-ZZZ-ZZ-DR-AR-09002

REV

I:\Projects\6056820\19_05_21\Drawings\CC\Users\sp@acm\Drawings\OPRA-ACM-ZZZ-ZZ-AR-09000_Subdiag1971.rvt