

# 1. Executive summary

**The challenge:** Assess current activities and develop a set of recommendations enabling Limerick City and County Council (LCCC) to predict and respond to the needs of senior citizens through better management of shared information.

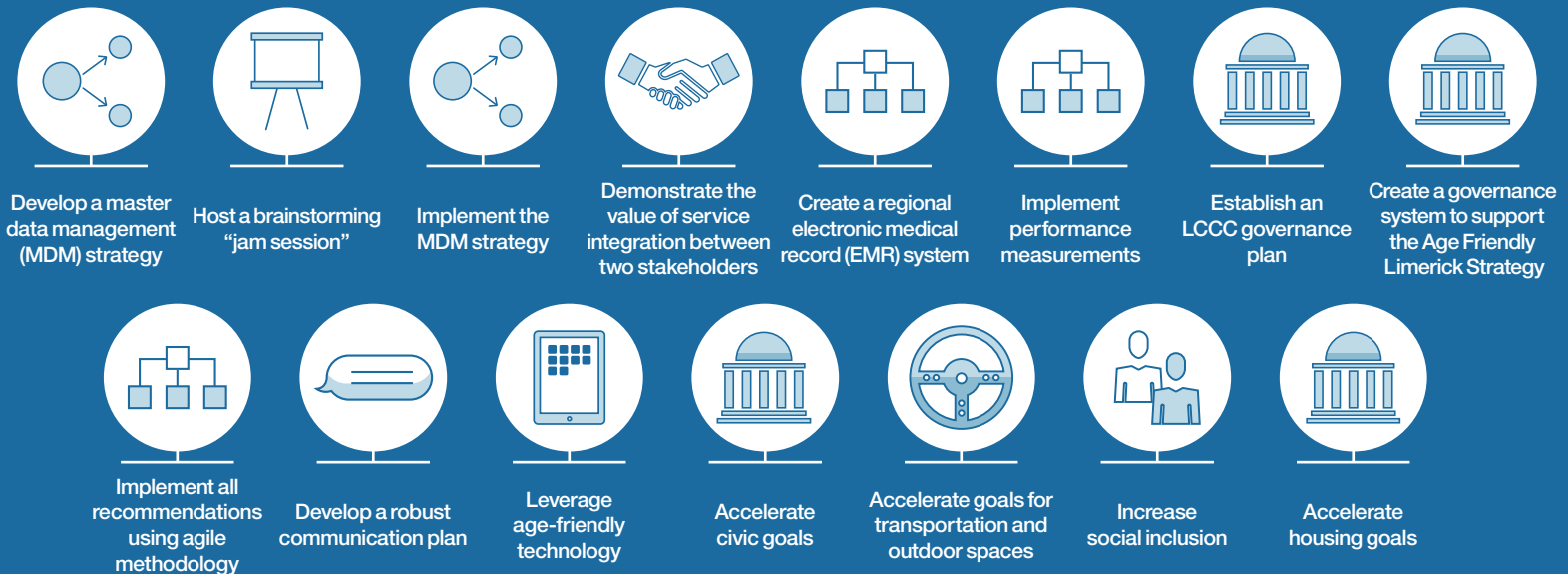
## Context

- While almost 50% population is under 35 years, Limerick City and County have a large and rapidly growing population of senior citizens
- In Ireland, senior citizens (people older than 65) are expected to increase more than 260% by 2046. In Limerick, the population of older people could increase from 23,313 (in 2011) to 58,283 in 2036.
- Stakeholders validated the need for an “age-friendly” strategy
- Three key needs: develop insights, accelerate existing projects and strengthen governance

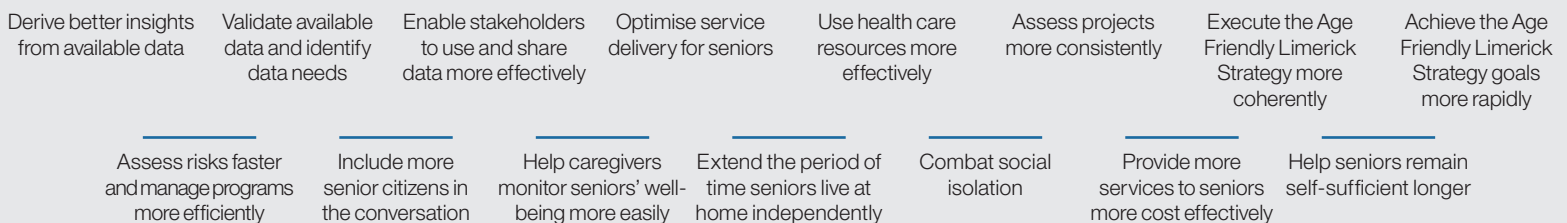
## Findings

- Accelerate goals for transportation and outdoor spaces, social inclusion, housing and civic participation
- Develop new initiatives for master data management, governance, communications, electronic medical records and smart cards

## Summary of recommendations



## Expected outcomes



## Vision

By implementing the recommendations in this report during the next three to five years, and by continuing to implement the Age Friendly Limerick Strategy and other best practices, Limerick will become a Smarter City that cares for and includes all of its senior citizens in civic life.