

Limerick City & County Council Annual Tidy Towns Seminar

Supports available for Groups

Sinead Mc Donnell, Environment Awareness Officer

Advice for groups

Ballyhoura, WLR and LCCC

- Available to meet individual groups
- Assist start up groups
- Assist where we can with applications
- As time allows

Workshop / Clinics

- Ballyhoura

- Individual TT group clinics will be held in the 5 districts in Ballyhoura. Groups will be contacted directly.

- WLR

- Organise a variety of workshops under the WLTT network.
- One on one support also available on request

- LCCC

- Annual Seminar
- Application workshops
- One to one support also available
- Also offers workshops to assist groups with categories of their applications eg Upcycling / Cultivate workshops.
- Advice on Waste management and prevention / Biodiversity

Helping Hands TUS Scheme

- TUS project which produces outdoor wood products for community groups and facilities
- All products are made to order in our workshop from pressure treated wood, by skilled crafts people
- Products include Garden Benches, Garden Seat with Planters, Insect Hotels, Bat & Bird boxes
- We also produce bespoke items
- Contact us on 0879751917 or 061450070
helpinghands@ballyhoura.org

Back2New **plus**



- Furniture Upcycling - creating bespoke pieces from used or unwanted furniture
- Fabric Upcycling - Unique pieces of clothing and soft furnishings are produced from donated items from local charity stores
- Personalised Design Service - Custom service for individuals who have unused/disliked items of furniture that they would like to change
- Contact: 087 2727742
- Email: upcycling@wlr.ie
- Facebook: [back2newupcycling](https://www.facebook.com/back2newupcycling)
- In addition our Rural Social Scheme has a number of participants who are fully trained in the use of **traditional Lime Mortar and stone work** and are available to undertake suitable restoration projects in local communities subject to the necessary permissions.

www.volunteerlimerick.ie

- This is a resource groups could potentially tap into. They have a significant number of volunteers registered looking for volunteer opportunities.
- Limerick Volunteer Centre
- Unit 40, Tait Business Centre
- Dominic Street, Limerick
- Phone 087 738 7481

Grant Support 1 of 3

- WLR/Ballyhoura provides funding for Tidy Towns under the Rural Development (LEADER) programme
- Types of projects funded in the past have included landscaping and village enhancement, erection of information panels, establishment of community composting and water harvesting facilities, development of walks, enhancement of parks and civic areas, built heritage conservation (subject to necessary permissions) etc
- Information on other possible sources of funding is disseminated to groups and support is available to prepare applications to these external sources

Grant Support

Limerick City & County Council

- Limerick Going for Gold Environment Improvement Grant Scheme & Competition 2016 is open to groups across the city and county.
- Advertised locally all groups notified directly
- <http://www.limerick.ie/council/limerick-going-gold>

Grant Support 3/3



- Local Agenda 21EPF
 - Administered nationally by the DOECLG
 - Locally by Limerick City and County Council.
- This is a small fund that is specifically for Awareness Raising Initiatives:
 - Waste Prevention
 - Biodiversity
 - Water Conservation
 - Energy Conservation
 - **NOT LITTER**
 - Advertised nationally by the DOECLG. LCCC will post a hardcopy of the application form to all TT groups on our data base.
 - **Note Completion reports must be received if a group successfully applies for funding.**

ECOLearning Journey (LA21EPF)

- Learning Journey to a leading Community Projects
- Dates to be confirmed - 09.30 to 16.30
- This unique capacity building experience is for people in Limerick engaged in Tidy Towns.
- Davie Philip from Cultivate Living & Learning will be the guide on the learning journey.
- PPN network is also being targeted as part of this project
- Limited number of places available.
 - Only 2 reps per TT group.

Invasive Species



- Ballyhoura and WLR both successfully applied for invasive projects under Local Agenda 21 2015.
- Water pollution team in the Council currently working on an app for recording incidence of the species.
- Area of growing interest



Green Schools



- Voluntary Programme
- 176 Schools Registered
- 145 with Flags

- All schools visited/assessed are advised to share their information with local TT groups.
- Note - Green Campus - SciFest LIT

Competitions ^{1/2}



- The Ballyhoura Annual TT Awards is held June.
- TTs groups in the Ballyhoura area are automatically entered once the group has taken part in the National competition for 2 consecutive years.
- 6 Awards given on the night and the awards are based on the National Tidy Towns Awards looking at marks increases across all adjudication categories.
- Hosted by a different TT group each year Ballyhoura will looking for a 2016 host group .

Competitions 2/2

- LCCC: Limerick Going for Gold Competition 2016 incorporating Limerick in Bloom



- Prize fund 100% funded by the JP McManus Charitable Foundation
- Castleconnell Overall winners in 2015

Tus & RRS supports

WLR and Ballyhoura both offer support under the

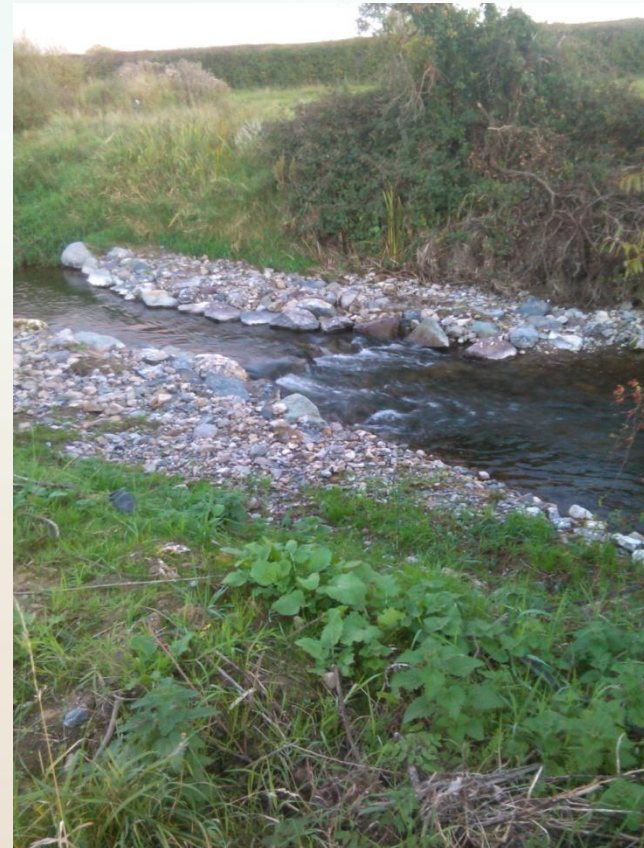
- Rural Social Scheme (RSS) and TUS work placement scheme - either through a permanent placement (19.5hrs/week) or on a temporary basis to help with specific projects.
- Bird Boxes have been made available to groups - limited supply available

Reuse Prevent Waste



Loobagh Project - Pilot

Anglers, Community, OPW, Inland Fisheries and the Council



Bat Detectors

Will be on loan to groups There will be criteria for leasing



Leaflets

• “Prevent waste” USB key

Home Composting Mini Guide

Composting is the decomposition of organic material. Anything that has lived can be composted. A full list of materials is printed below. Over one third of household waste is compostable. Composting is easy. It reduces waste and returns nutrients to the soil.

Materials that can be composted are listed below.

Making compost right is a bit like baking a cake! The right mix of ingredients will produce excellent results. Brown materials (carbon rich) are slow to rot but essential to the process. Green materials (full of nitrogen) are compost activators and need to be balanced by a larger amount of brown material.

The length of time it takes to compost material varies depending on the mix of green and brown material, moisture and air content. It could be ready in as little as 4 weeks up to a year or more to mature.

The aim of composting is to turn organic waste into crumbly soil. There should be hardly any trace of the parent material except through your fingers.

My compost is slimy & smells!

Too much nitrogen material such as grass. Add more brown like

My compost is taking ages to decompose!

Be patient - Turn the material regularly to speed up the process

My compost smells like rotten eggs!

Not enough air. Turn the contents every day for a week, then re

The compost material is damp and soggy

The material added may be too wet or the compost is locate Add a batch of materials such as weeds or hedge trimmings.

There are a lot of flies in the compost!

Put a layer of newspaper or grass cuttings at the top of the bin or the lid open during the day.

Will rodents be attracted to the compost?

Composting shouldn't attract rodents into your garden. Most g home to rats and mice. Place the compost in an open area or other water areas. Plant lavender or rosemary close by as th detest rodents. If you are worried place the compost on a chicken or bidge wire & turn up the edges.

Remember wash your hands after gardening or hand



How to Manage Your Waste

Household Waste Collection Service

This includes as a minimum a recycling and residual waste collection service where waste is collected from the door. It is illegal to dump household recyclables, organic waste or residual waste. Please:

- Ensure you have a waste collection service
- Place your bin out on the correct collection day and remove once emptied.

The following is a list of household waste collection service providers operating in Limerick:

- AES: 0818 650 655 / 045 580060 • www.aesirl.ie
- Clean Ireland: 1890 361800 • www.cleanireland.ie
- Country Clean: 022-46848 • www.countryclean.ie
- Fitzgerald Waste Management: 061 314858 • www.fitzgeraldwaste.com
- Higgins Waste: 066 7123059 • www.higginswaste.com
- Killarney Waste Disposal: 1850-373737 • www.kwd.ie
- Recycle Right: 061 577 577 • www.recycleiright.ie
- Southwest bins: 068 21969 • www.swbin.ie
- Mr Binman: 061-351127 • www.mrbinman.com
- White Skip Hire: 06384970 • www.whiteskiphire.com

This list is not exhaustive and is subject to change – a full list of Waste collection Service Providers can be found on <http://www.mwpo.ie>



TOP TIPS

- 3 lifestyle rules: R, R, R
- Talk about ways to reduce waste
- Mend and repair
- Go shopping with a list
- Avoid disposable

Dispose of Food Waste

- A brown bin or
 - A home compost or
 - Where a brown bin is not available
- If you live in a population with a brown bin you must alternatively home compost their food waste or if this is not possible food waste may be placed in the general/landfill bin.

Check out Recycling

- Use your Recycling bin
- The materials accepted
- <http://www.limerickcitycouncil.ie>
- Bring Banks for glass
- WEEE and Household Appliances
- Paint Reuse Scheme
- Green waste can be composted
- Compost product (soil)
- Reuse facility available
- Book Trade Scheme
- Pass on goods you no longer need
- Compost garden

DISPOSE OF HOUSEHOLD GREEN/GARDEN WASTE CORRECTLY

Green waste is organic waste sourced from the garden or from landscaping activities. It generally includes grass clippings, hedge cuttings, bushes, tree toppings, prunings or other woody material. Green waste is not accepted at landfill. It should be separated from other waste and dealt with correctly.

IT IS ILLEGAL TO

- Dump green/garden waste on common areas, greens, disused lanes, roadsides etc
- It is unsightly and can cause the spread of invasive species.
- Burn green/garden waste either inside or outside any part of a house, garden or premises.

OPTIONS FOR DEALING WITH GREEN/GARDEN WASTE

- Use a compost bin or compost heap and compost in your own garden.
- Cut your grass regularly. If possible, invest in a mulching mower.
- Hire a shredder and shred hedge clippings and branches and make your own bark mulch.
- Bring your green waste to the closest green waste facility.
- For large quantities of green waste, hire a skip from a permitted waste contractor. The permitted contractor will ensure the green waste is composted or recovered.

GREEN WASTE FACILITIES

- Kilmallock Recycling Centre 063 98836
- Mungret Recycling Centre 061 305 720
- Newcastle West Recycling Centre 069 78610
- Gortadroma Waste and Recycling Centre 069 82339
- www.limerickrecyclingcentres.ie m:087 748 9130

Limerick City and County Council Customer Services on 061 496200 or customerservices@limerick.ie

ARE YOU FEEDING THE LOCAL RAT?



DID YOU KNOW THAT THE BROWN RAT

- Is the most successful mammal on the planet after humans!
- Normally lives where humans live particularly in urban areas.
- Can breed throughout the year if conditions are suitable, a female producing up to five litters a year.
- Has a pregnancy period of only 21 days and litters can number up to fourteen, (seven is common).
- Can breed from the age of 12 weeks!

If you are putting scraps of bread and other food scrapings from plates and saucapans out on green areas, footpaths and roads, you are supplying food for the local rat population.

DISPOSE OF FOOD WASTE CORRECTLY:

If living in a population area of greater than 1,500 or your collector provides you with a brown bin then you must dispose of your food waste in the brown bin provided or alternatively home compost your food waste. All other householders should compost their food waste or if this is not possible food waste may be placed in the general/landfill bin.



For further information on how to dispose of waste correctly contact Limerick City & County Council's Customer Services on 061-496200.

Segregate Your Waste!

The following wastes should be separated and placed in the relevant appropriate waste container.



FOOD/KITCHEN WASTE

Food Scraps
• Meat, Fish, Bones
• Kitchen Paper Towels

RECYCLABLE WASTE

Plastic
• Plastic Drink Bottles
• Paper & Cardboard
• Newspapers/Magazines

RESIDUAL WASTE

This is the fraction of waste remaining once dry recyclables and organic waste have been removed.

BURNING WASTE IS ILLEGAL!

Burning waste in your home or business is illegal and has a significant negative impact on the local environment and may also affect your health.

Did you know?

- It is illegal to burn household, garden or commercial waste either inside or outside any part of a house, garden or premises.
- Use of waste burners or other devices for burning household, garden or commercial waste is illegal.
- Burning of waste in stoves or any device attached to a chimney or flue, without a licence from the Environmental Protection Agency, is illegal.
- It is illegal to burn waste from all gardens, parks and cemeteries.



Fairtrade



Nov 2015 Limerick
Celebrated its 10th
Birthday as a FT City

Run a Christmas Card
Competition for Schools

Run a poster competition
for Fairtrade Fortnight

Limerick City Fairtrade
Group have registered for
TLC2

This year's Fairtrade Fortnight is 29th Feb – 13th March

Guest Fairtrade Speaker at DD Chamber on 2nd March

Gloves Bags Litter pickers

- Council supply Gloves, Bags and Litter Pickers for community clean ups.
- Litter collected is then picked up by the council for correct disposal.
- For both of these services please contact Limerick City & County Council's Customer Services **061-496200**

National Spring Clean 2016

- & Team Limerick Clean Up
 - All volunteers registered for the 2016 **TLC2** will be registered for National Spring Clean 2016 under the name Team Limerick Clean Up.
 - Groups may still register directly with an Taisce.
 - <http://www.nationalspringclean.org/>
 - Tel: 01 400 2219 E-mail: nsc@antaisce.org



www.teamlimerickcleanup.ie

Mr. BINMAN
Your Waste is Our Business

Limerick's Newspaper since 1880
LIMERICK LEADER

LIMERICK'S
LIVE 95am

Stats for TLC 2015



- 10,054 Volunteers
- 100 Tonnes of litter collected which equates to over 4,000 household wheelie-bins of waste
- 2,300Km covered covered by Mr Binman crews

Why TLC2 and your community work is so important



HOW LONG DOES LITTER LAST?

Littering is an offence under the Litter Pollution Act.

Limerick CITY & COUNTY COUNCIL

Reduce Reuse Recycle!

Disposable Nappies
450 years
Need we say more...

Chewing Gum
Indefinitely
Discarded gum is difficult and costly to remove. Please bin your gum when you're done.

Styrofoam
May be around forever
Use reusable travel mugs.

Take-Away Wrappers
3 months to 30 years
Depending on materials

Plastic Bags
1,000's of years
Bring reusable bags with you to the shops.

Leftovers
6 months +
Compost organic waste so that it can be reused

Dog Litter
1-6 months
Disgusting and can cause disease - Clean up after your dog. Use any bag and any public bin or your own bin.

Cigarette Butts
1-5 years
Please stub out and dispose of in a bin.

Aluminium Cans
200 years
Aluminium is a valuable metal and it is infinitely recyclable. Please recycle

Glass Bottles
1 million years
There's always been a tradition of recycling glass bottles. Its decomposition time is the best reason yet!

Plastic Bottles
450 years
Plastics account for 60% of all litter collected. Avoid one-use plastic bottles - invest in a reusable bottle.

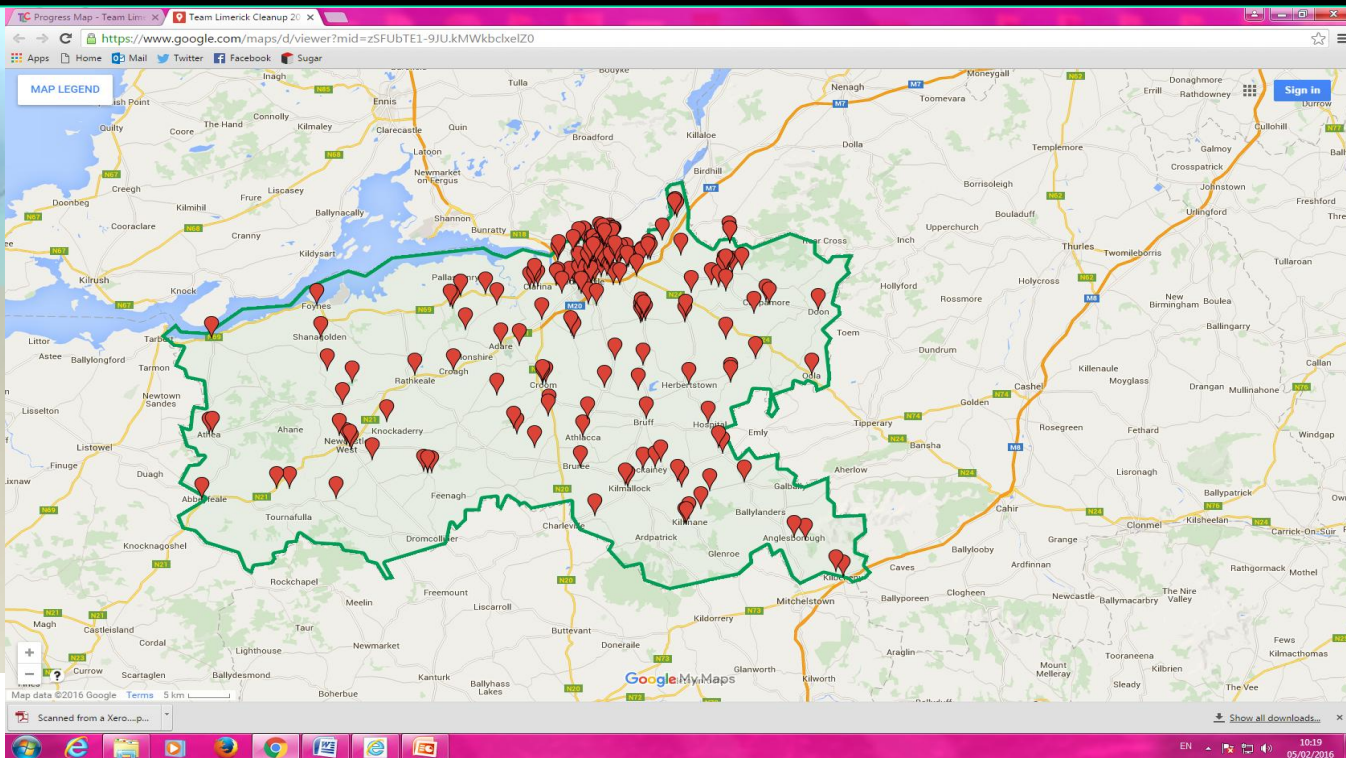
BE RESPONSIBLE SHOW LIMERICK THE TLC IT DESERVES - BIN YOUR LITTER!

REPORT LITTERING ON **1800 20 11 51** or customerservices@limerick.ie

For further information on how to dispose of waste correctly contact Limerick City & County Council's Customer Services on **061-496200** or customerservices@limerick.ie

JOIN THE CLEAN TEAM!

Good Friday, 25th March 2016



**Over 7,060
Volunteers
already
signed up**

www.teamlimerickcleanup.ie

Mr. BINMAN
Your Waste is Our Business

LIMERICK LEADER
Limerick's Newspaper since 1860

**LIMERICK'S
Live 95.5am**

JOIN THE CLEAN TEAM!

Good Friday, 25th March 2016



Day	Date	Time	Venue
Tues	2 Feb	7.15 pm	NCW - Ardagh Golf Club
Wed	10th Feb	11.00am	Dooradoyle Council Chamber
Tues	16 th Feb	7.15 pm	Woodlands Hotel Adare
Tues	23 rd Feb	7.15 pm	Deebert House Kilmallock
Tues	8 th March	11.00am	Dooradoyle Council Chamber

www.teamlimerickcleanup.ie

ME BINMAN
Your Waste Is Our Business

LIMERICK LEADER
Limerick's Newspaper since 1860

**LIMERICK'S
Live 95am**

JOIN THE CLEAN TEAM!

Good Friday, 25th March 2016



JOIN THE CLEAN TEAM!



Register on www.teamlimerickcleanup.ie

Facebook

Twitter

Instagram

Email teamlimerickcleanup@limerick.ie

Phone 061496200

www.teamlimerickcleanup.ie



Summary - help is available

- **Ballyhoura Tourism & Heritage Officer**
 - Amanda Slattery 06391741 aslattery@ballyhoura.org
 - Tus & RSS Co-ordinator
 - Barry Wilson 063- 91734 bwilson@ballyhoura.org
- **WLR RDP Project Officer**
 - Suzanne Rowley 069 79114 srowley@wlr.ie
 - Tom Wilmott 069 61540 [rswlr@eircom.net](mailto:rsswlr@eircom.net)
- **Limerick City & County Council, Environment Awareness Unit**
 - Sinead Mc Donnell, Environment Awareness Officer 496367 sinead.mcdonnell@limerick.ie
 - Jayne Power 496214 jayne.power@limerick.ie