



Limerick Digital Strategy (Draft)

# Building Ireland's First Digital City

Towards a Sustainable Smart Limerick  
City, Region and Communities

Limerick Hinterland Report

## Smart CCTV Pilot

P06-056CCTVSD

### Presentation to Councillors



# Limerick Hinterland Report

## Socio economic profile of 22 selected settlements

- explores the relationship between these settlements and the city on the basis of twenty-two key socio-economic indicators.
- Population increases since 2002
- Reduced unemployment trend
- Reduced crime levels in 2014 vs 2011
- Investment in infrastructure is needed

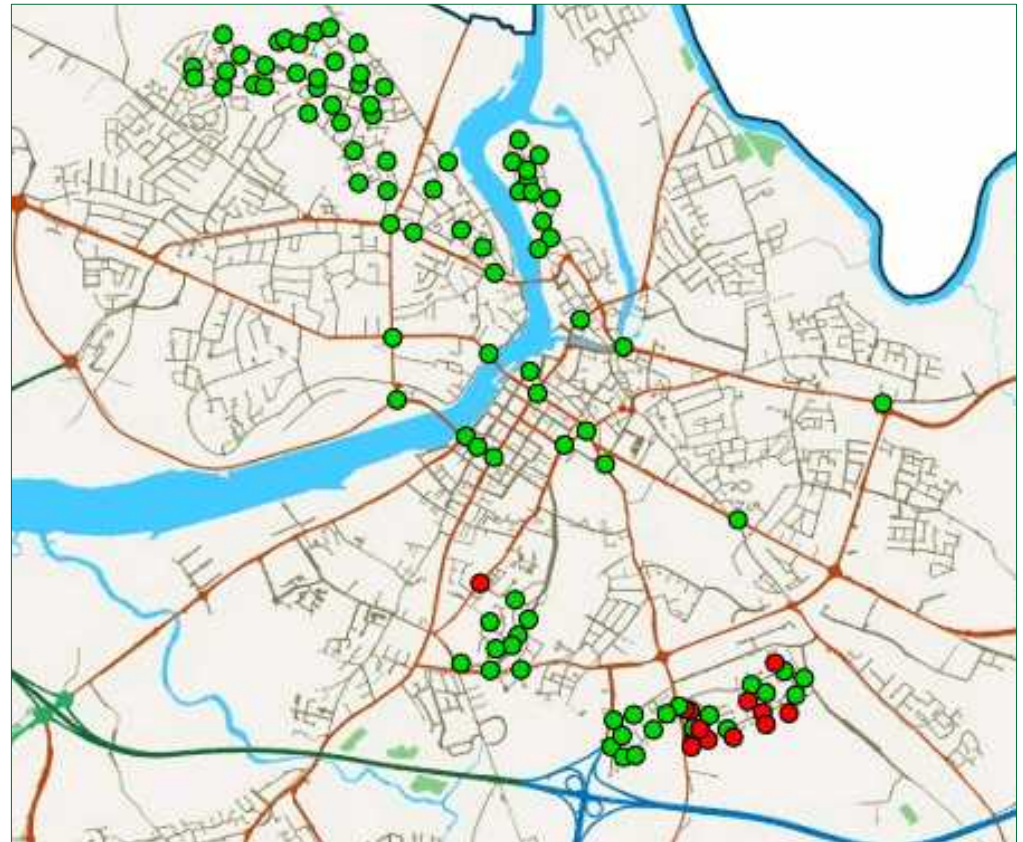
Smart CCTV for  
Safer communities



# Overview

Over 200 CCTV in  
City & County  
(estimated)

- Housing
- Traffic
- Environment
- Regeneration



## Monitoring

- Northside and Southside are monitored by Moyross CC
- Traffic CCTV is monitored by LCCC
- Remote Garda access to Northside and Traffic CCTV, Southside (work in progress)

# 3 Main Challenges

The Smart CCTV pilot aims to find solutions for

- Increased demand (>100 CCTV)
- Monitoring capability & Access to footage
- Maintenance and upgrades. Vandalism

**Effective**  
Smart CCTV

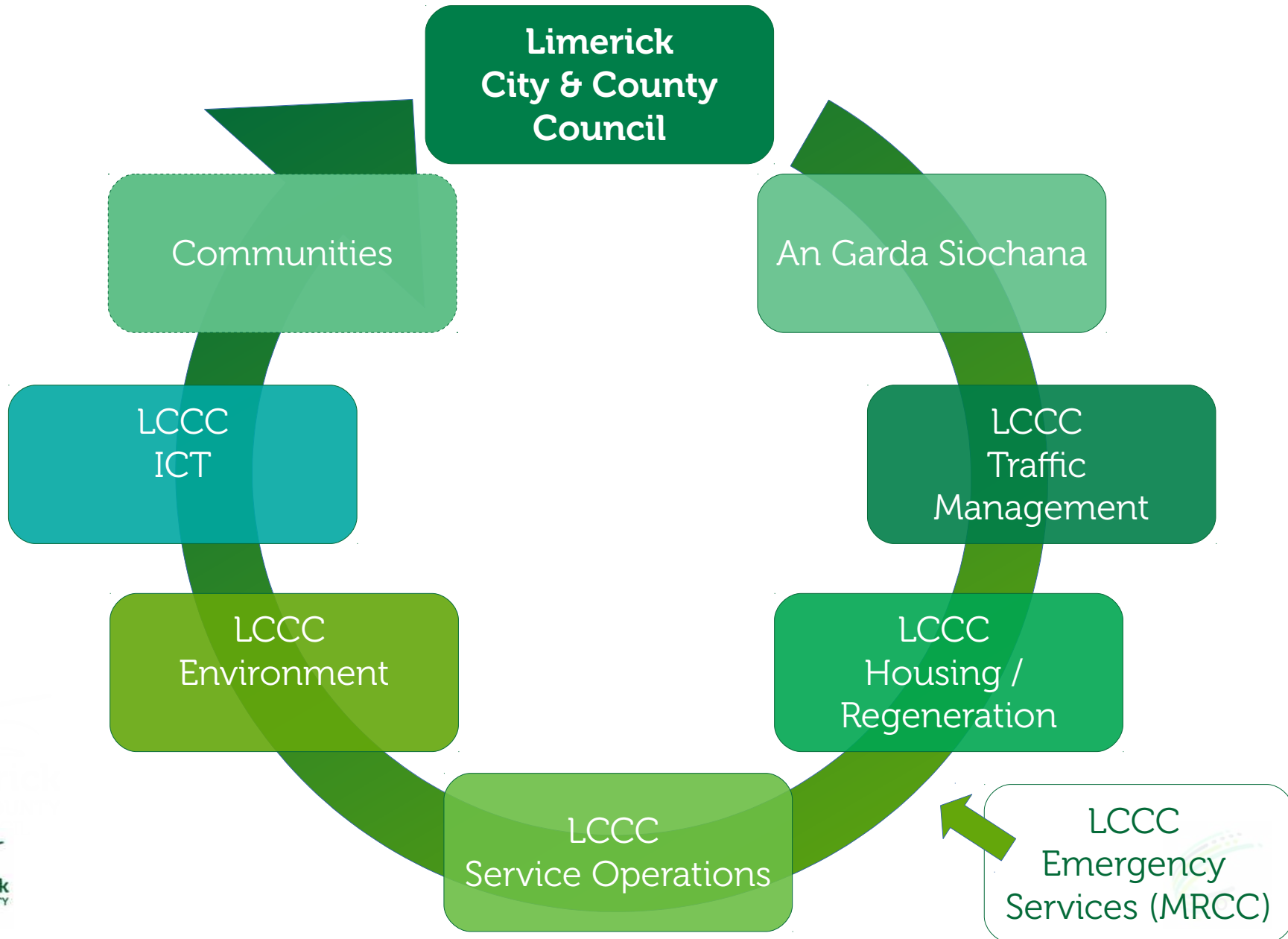


# Challenges

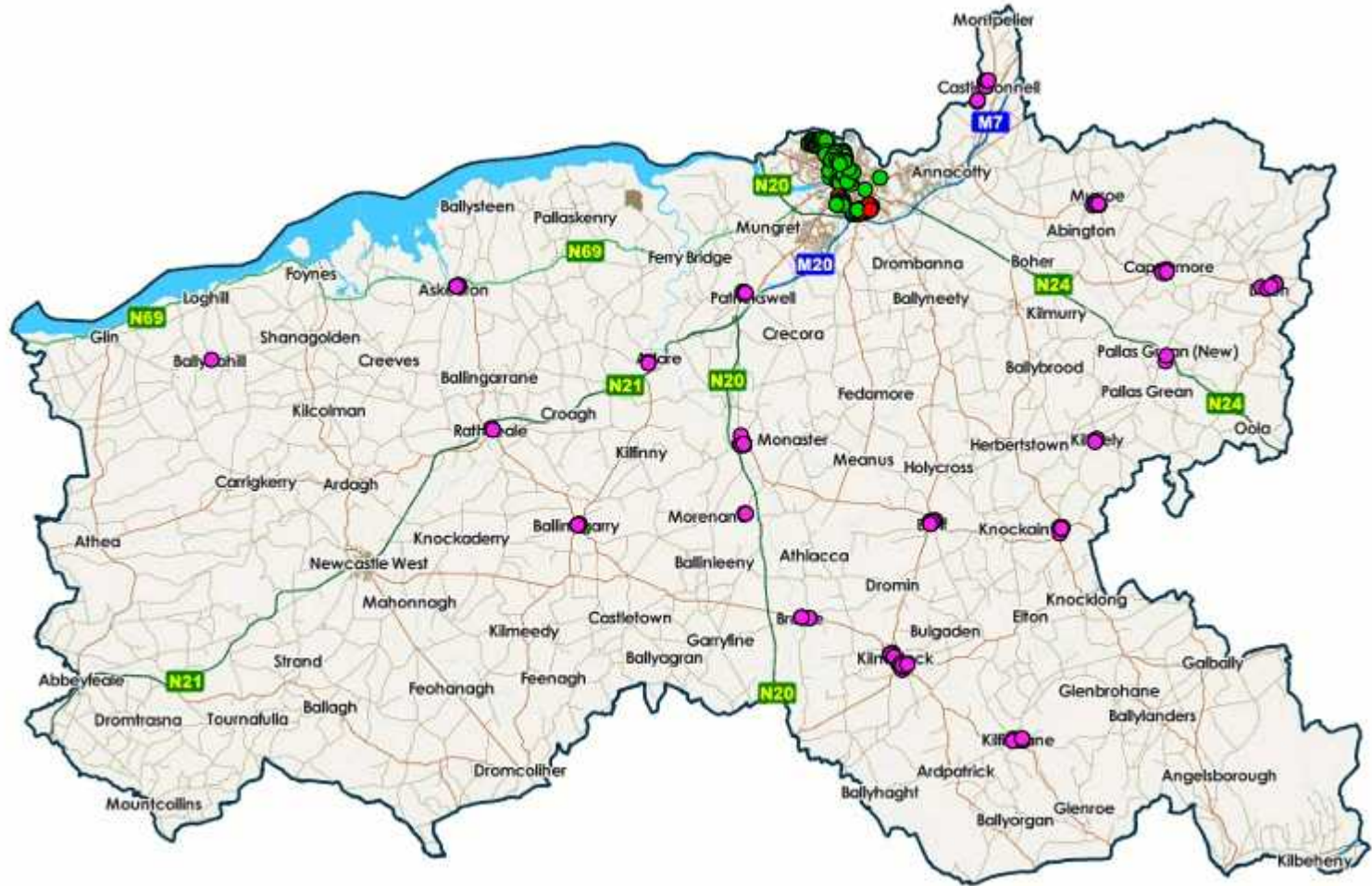
The Smart CCTV pilot aims to find solutions for

- Increased demand
  - Limerick City, New Castle West, Askeaton, Rathkeale
  - Regeneration Framework Implementation Plan
  - Hinterland Report (50 new cameras)
- Communications reliability and costs
- Maintenance and upgrades. Vandalism
- Monitoring capability & Access to live and recorded material
- Quality of images & effectiveness. Standards for CCTV
- Compliance with legal requirements (Data Protection)
- Procurement and supplier management
- Governance arrangements.
- Maximize social and operational benefits.

# Stakeholders



# CCTV Demand



Demand for 100 new cameras



# Hinterland Report – Decrease in crime in 2014

## CCTV Project Objectives

- Further reduce crime
- Reduce antisocial behavior
- Reduce damage to infrastructure & Properties
- Pilot Co-ordinated Enforcement
- Pilot use Smart CCTV
- Other uses (traffic mgmt, etc.)

Safer communities

Location	PPC 2011	PPC 2014
Limerick City	8	10
Askeaton	15	33
Newcastle West	17	22
Rathkeale	20	30
Kilmallock	25	35
Murroe	26	57
Caherconlish	26	47
Castleconnell	32	34
Abbeyfeale	33	35
Patrickswell	33	61
.....	....	
Adare	51	43

Population as of Census 2011



# Smart CCTV Pilot

## Proposal to DoHPCLG based on the Limerick Hinterland Report

- €500,000 Funding
  - €250,000 DoHPCLG
  - €250,000 LCCC
- Planned investment
  - €350,00 Capital Costs
  - €150,000 Operations costs for 3 years

## Integrated Project

- 4 Phases
  1. Technical Assessment
  2. Consultation with stakeholders
  3. Procurement
  4. Installation
- Delivery of 50 CCTV cameras by Q4-2017

# Integrated CCTV

