



Limerick Digital Strategy

Building Ireland's First Digital City

Towards a Sustainable Smart Limerick
City, Region and Communities

National Broadband Plan Limerick

Presentation to Councillors



Dr. Mihai Bilauca
Head of Digital Strategy



v.2.0 2017/04/20

National Broadband Plan

Objective: High Speed Broadband to every home, school and business in Ireland, no matter how remote, through:

- Investment by commercial telecoms companies
- State-funded market intervention - €275m

1.2m premises in Ireland now have access to High Speed Services of at least 30mbps. Investment continuing.

Procurement commenced to provide services to over 750k premises where investment by telecoms operators is unlikely

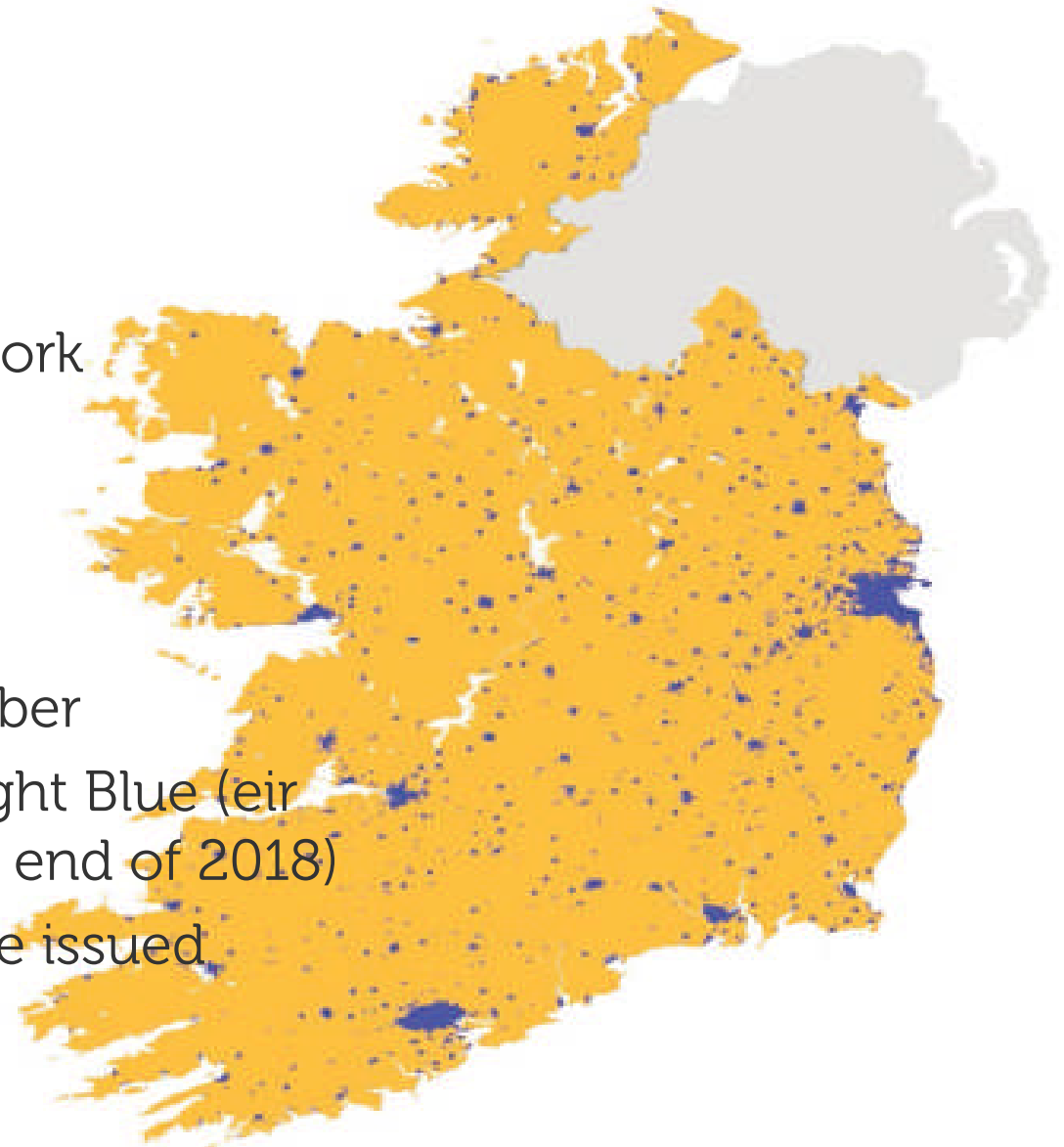
Intervention Area

September 2016

- 757,000 addresses (30%)
- 96% of land mass
- 100,000km of road network
- 1.8m citizens (38%)

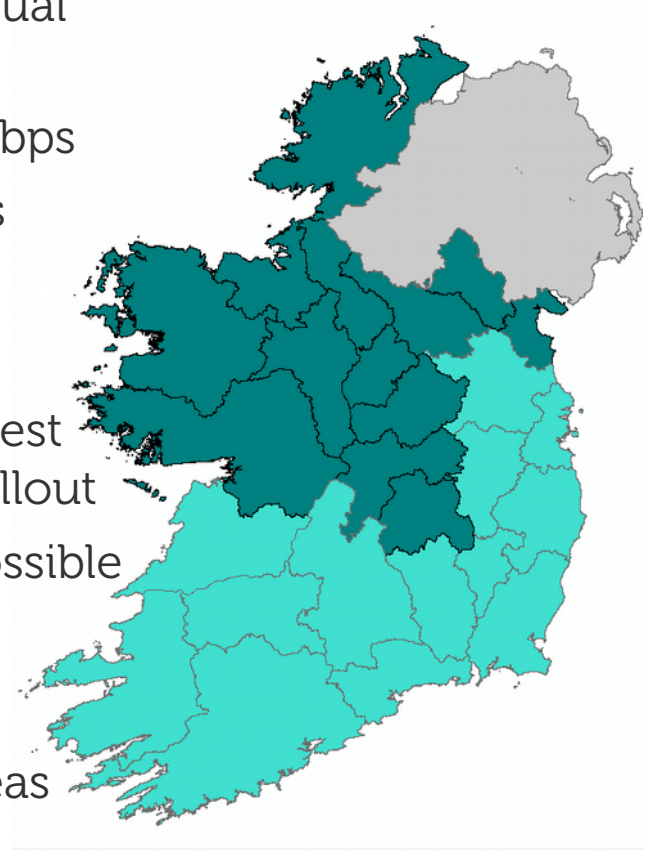
April 2017 Update

- +84,500 premises in amber
- -288,000 premises in Light Blue (eir committed to deliver by end of 2018)
- Quarterly updates will be issued



Key Elements

- Wholesale network available to all retailers, with equal access and separate branding
- Minimum download 30Mbps, Minimum upload 6Mbps
- Separate speeds and connection times for business
- Ownership - Commercial Stimulus Model
- Build-out within 3-5 years of contract award
- Prioritised deployment - maximum impact in shortest timeframe balanced with most efficient network rollout
- Sharing of bidders' existing infrastructure where possible
- Future-proofed network
- Technology neutral
- Retail prices in line with services in commercial areas
- 25 year contract
- 2 Procurement lots



Prioritisation

- It will take between 3 to 5 years to roll-out the network.
- Methods of providing access to high speed broadband in remote rural communities who maybe at the latter stages of deployment given their remote locations.
- Address this through:
 - Strategic Connection Points (SCPs) in Limerick
 - Strategic Community Access Hubs (SCAHs)
 - Demand Stimulation Initiatives – Micro Hubs, Digital Hubs to support Digital Strategies

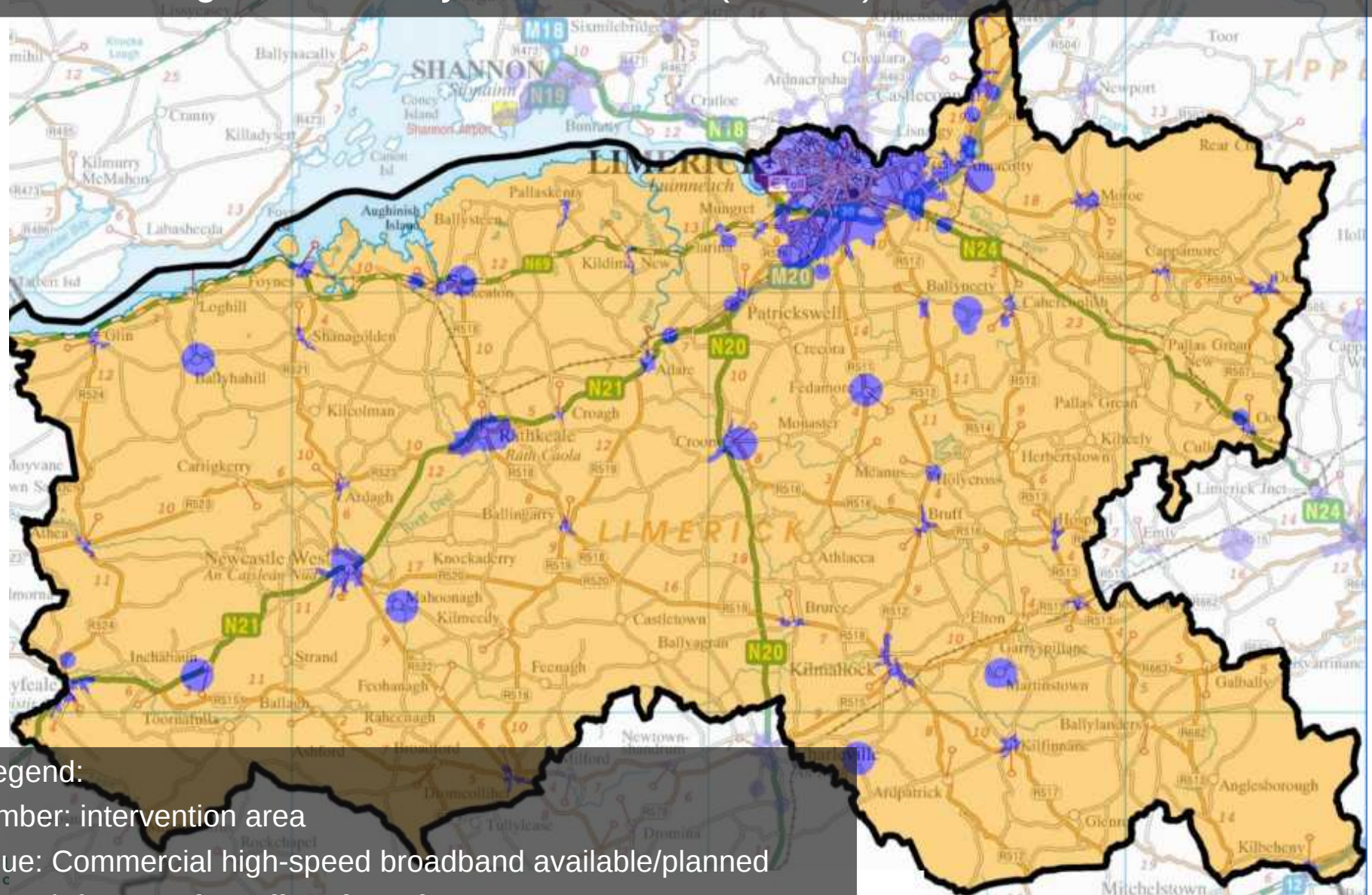
Strategic Community Access Hubs (SCAHs)

Five categories of SCAH connections have been identified:

- 1. Business Centre** – situated in a public building which provides business access to local businesses that may otherwise have to commute to access required broadband services or alternatively, relocate their business to remain solvent.
- 2. A hot-desk facility** - open business hours or on demand (within business hours).
- 3. A facility with access for members of the public**, such as a library or a Local Authority property.
- 4. A facility with limited public access** (i.e. might be open a couple of hours a day, and/or a few days a week).
- 5. A local Wifi** hub with 'always on' wifi (potentially linked to 1-4 above but available out of hours).

Limerick High Speed Broadband Map 2016

- 135 Strategic Connection Points (SCPs) identified in the amber areas
- 12 Strategic Community Access Hubs (SCAHs) selected in the amber areas



Legend:
Amber: intervention area
Blue: Commercial high-speed broadband available/planned
More info: www.broadband.gov.ie

Co-Development Programme

Type of projects that will facilitate NBP

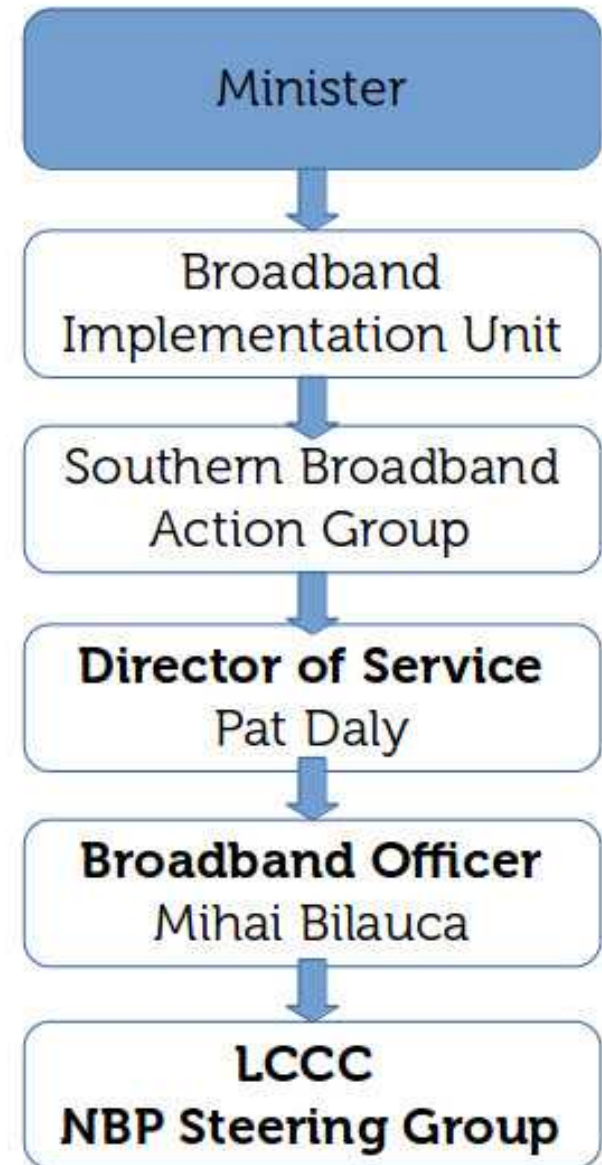
- Roadworks (new, upgrades or repairs)
- Works around rail corridors
- Construction of major sites like schools, hospitals, government buildings, bridges, new housing estates, etc...
- New or upgrades of gas, electricity, water, sewer or stormwater assets
- Streetscape work or footpath widening

Information required:

- What is the type and scope of the project works
- Where is the planned works located
- When are the planned works due to occur
- State of the current phase of the project i.e. planning, design, tender or construction

NBP Implementation Structure in Limerick CCC

- 1) Preparation – data sources high resource demand expected
- 2) Project Management Process – Timely roll-out
- 3) Communications Plan – Engage communities
- 4) Structure – Project Team in place



Community engagement plan

- Leadership
- Benefits of high speed broadband
- Impacts of the build phase
- Dissemination - targeted communication
- Local ads, PPN and other channels

FAQ (sample)

- **Where do I find information about broadband roll-out to my premises:** www.broadband.gov.ie using your eircode/address
- **I am in a BLUE area but can only get speeds of 2Mbps/cannot get High Speed Broadband?** If your premises cannot get high-speed broadband email the Department at broadband@dccae.gov.ie with your eircode and details of operators you have contacted.
- **I live in an AMBER area, when can I expect to receive a service through the State Intervention?** At this stage it is not possible to provide definitive timelines and it is very much dependent on the outcome of the current procurement process.
- **What does it mean if I am in a LIGHT BLUE area?** If your house is in a LIGHT BLUE area this means that you are within the new commercial deployment area and you may access high-speed broadband by end of 2018. Check www.openeir.ie for further information on commercial deployment plans.