



Limerick County Council
Comhairle Chontae Luimnigh

ANNUAL REPORT

TUARASCÁIL BHLIANTÚIL

2009





MISSION STATEMENT



TO ENHANCE THE LIVES OF THE PEOPLE OF COUNTY
LIMERICK THROUGH THE EFFICIENT DELIVERY OF
ACCESSIBLE QUALITY SERVICES WITH A FOCUS ON
SOCIAL INCLUSION AND THE PROMOTION OF
SUSTAINABLE BALANCED DEVELOPMENT

Limerick County Council
Comhairle Chontae Luimnigh

contents



Introduction by the Cathaoirleach / County Manager	2
---	---

Members of Limerick County Council4

Council Members and Meetings	6
Corporate Policy Group	8
Committees of the Council	8
Strategic Policy Committees	8
Representation on other Bodies	10

Civic Receptions 200912

Highlights 200913

Celebrating Community Events 200916

Service Reports22

Transportation and Water Services	23
Roads	23
Water Services	27

Housing31

Community and Enterprise, Human Resources and Corporate Services34

Community and Enterprise	34
Library	36
County Arts Office	38
Human Resources	38
Corporate Services	39
General Administration	39
Freedom of Information	39
Internal Audit	40
Workplace Partnership	40

Planning and Development41

Environment, Emergency Services and Consumer Affairs45

Environment	45
Emergency Services	47
Veterinary Services	47
Civil Defence	48

Corporate Projects	48
--------------------	----

Finance, Information Systems and Motor Taxation49

Finance	49
Information Systems	52
Motor Taxation	53

Area Office Development54

Adare/Castleconnell	55
Kilmallock	57
Newcastle West	59
Rathkeale	61

Limerick County Council Structure and Organisational Chart63

<i>Appendix 1</i>	
Conferences/Seminars attended by the Members in 2009	64

<i>Appendix 2</i>	
Statement of Election Expenses and Political Donations 2009	66

<i>Appendix 3</i>	
Contact Details for Limerick County Council	67

<i>Appendix 4</i>	
Principal Officers of Limerick County Council 2009	68

Introduction

By the Cathaoirleach and County Manager

We are delighted to introduce the Annual Report of Limerick County Council for the calendar year 2009. This report contains information about the many services provided by the Local Authority, its elected members and various departments.

The delivery of high quality services, tailored to meet the needs of all our customers, remains one of Limerick County Council's core objectives and is highlighted by the important work, which was carried out on behalf of the people of County Limerick during 2009.

The year was marked by the commencement, continuation and completion of numerous infrastructure projects throughout the County.

After more than three years of intensive work, the Shannon Tunnel Project entered its final phase. We are confident the scheduled opening date of September 2010 will be achieved or bettered. This project will bring significant economic and environmental benefits to Limerick City and County and the wider Mid-West region.

Significant progress also was made on a number of other road projects including the M7 Nenagh to Limerick, M20 Cork to Limerick, N21 Abbeyfeale to Adare and N21 Adare Bypass.

Limerick County Council opened its new 6 million euro Area Office and Regional Library – Áras Mainchín Seoighe – in late November. The centralising of principal services under one roof has enabled the Council to provide public services more efficiently and effectively in the Electoral Area. Meanwhile, construction commenced on a new Fire Station in Kilmallock, which represents a very positive development for Limerick County Fire and Rescue Service as well as the people who live in, work in and visit Kilmallock.

The investment in water and wastewater infrastructure continued with considerable progress being made on various water and sewerage schemes throughout the county.

2009 was marked by a number of significant and progressive developments in the area of housing. 54 houses were completed during the year with an additional 25 houses undergoing construction. Good progress was made regarding the implementation of the Traveller Accommodation Programme 2009-2013 along with the delivery of other services for members of the traveller community.

In the area of environment, electricity production from landfill gas at Gortadroma commenced in June following the installation of a 1 MW generator at the site.



David Naughton
Cathaoirleach



Ned Gleeson
County Manager

In November, Limerick County Council responded to flooding incidents in various parts of County Limerick along the lower River Shannon. A significant number of staff, both indoor and outdoor, participated in the emergency response and other members of staff provided invaluable support by managing the day-to-day operations of the Council during the flooding crisis.

The dramatic downturn in the economy led the Council to renew its efforts to assist and facilitate enterprises in contributing to the local economy. The Council established a new Business Support Unit aimed at maximising economic activity and employment opportunities in County Limerick. We also maintained our emphasis on promoting tourism activities.

Despite the financial constraints encountered as a result of the economic downturn, the Council maintained its core objective of providing a quality service to local communities across County Limerick. We implemented a number of community schemes during the year including the 'Community Playground Grant Scheme' and the 'Mini-Pitch Scheme', a joint project between the Council and the Football Association of Ireland. The County Limerick Sports Partnership also initiated a number of schemes aimed at increasing participation in sport and assisting the work of the county's many sporting organisations.

As Cathaoirleach and County Manager, we are pleased to confirm that significant progress was made by Limerick County Council in delivering on its various work programmes for 2009.

The coming year promises to be both challenging and exciting for Limerick County Council and its customers. In a period of immense change, dominated by new economic and social challenges, increasing public expectations, and an ever changing operating environment for local authorities, the need for leadership in the Local Government sector has never been as great.

We are confident that with an excellent team of staff, a supportive Council, and continued good relations with local communities and other agencies, our 2010 work programmes will allow for the continued economic, social and cultural development of County Limerick and the delivery of improvements in the quality of life of the customers we serve.

David Naughton
Cathaoirleach

Ned Gleeson
County Manager

Members of Limerick County Council

Cathaoirleach
2009 – 2010



**David
Naughton**

Leas Chathaoirleach
2009 – 2010



**William
O'Donnell**

Adare Electoral Area



Rose Brennan
14, Park Avenue,
Adare,
Co. Limerick (FG)



Richard Butler
Dooradoyle Road,
Dooradoyle,
Co. Limerick. (FG)



James Collins
Collins Bar,
Dooradoyle,
Co. Limerick. (FF)



Leonard Enright
Ballyanrahan,
Patrickswell,
Co. Limerick. (FF)



**Patrick C.
Fitzgerald**
Anhid, Croom,
Co. Limerick. (IND)



Tomás Hannon
4, Dromore Rise,
Raheen,
Co. Limerick. (LAB)



Leo Walsh
Lower Raheen,
Ballyneety,
Co. Limerick. (FG)

Castleconnell Electoral Area



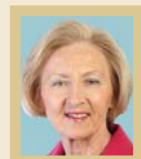
John Egan
Abington, Murroe,
Co. Limerick (FG)



Noel Gleeson
Cullenagh,
Cappamore,
Co. Limerick. (FF)



Mary Harty
Corelish West,
Pallasgrean,
Co. Limerick. (FG)



Mary Jackman
5 Newtown,
Castletroy,
Co. Limerick. (FG)



Michael Sheahan
'Sona Villa', Old
Schoolhouse Road,
Monaleen,
Co. Limerick. (FG)



Brigid Teeffy
Ballybricken,
Grange,
Co. Limerick. (IND)



Eddie Wade
Cahernorry,
Drombanna,
Co. Limerick. (FF)



Kilmallock Electoral Area



Mike Donegan
21 Millmount,
Kilmallock,
Co. Limerick. (FF)



James Heffernan
Main Street,
Kilfinane, Co.
Limerick. (LAB)



Mike Houlihan
Bresheen,
Kilmallock,
Co. Limerick. (FG)



William O'Donnell
(Leas-Chathaoirleach
2009/2010)
The Waterfall, Bruff,
Co. Limerick. (FG)



Eddie Ryan
Castlereagh,
Galbally,
Co. Limerick. (FF)

Newcastle Electoral Area



Michael Collins
Ballinvallig,
Newcastle West,
Co. Limerick. (FF)



Francis Foley
Elliswood,
Killarney Road,
Abbeyfeale,
Co. Limerick. (FF)



Liam Galvin
Ballagh,
Abbeyfeale,
Co. Limerick. (FG)



Patrick O'Donovan
Churchtown Road,
Newcastle West,
Co. Limerick. (FG)



Jerome Scanlan
Ballydonnell,
Feohanagh,
Co. Limerick. (FG)

Rathkeale Electoral Area



Stephen Keary
Clogh, Croagh,
Co. Limerick. (FG)



David Naughton
(Cathaoirleach
2009/2010)
Ballysteen, Askeaton,
Co. Limerick. (FG)



John Sheahan
Ballyguilteneane,
Glin, Co. Limerick.
(FG)



Kevin Sheahan
Cloonreask, Askeaton,
Co. Limerick. (FF)

COUNCIL MEMBERS AND MEETINGS

There are 28 members on the Council;

- 7 members in the Adare Electoral Area;
- 7 members in the Castleconnell Electoral Area;
- 5 members in the Kilmallock Electoral Area;
- 5 members in the Newcastle Electoral Area;
- 4 members in the Rathkeale Electoral Area.

Council Meetings are normally held on the fourth Monday of each month (except August when there is no meeting) in the Council Chamber at County Hall. The full Council met on 18 occasions (excluding committee meetings).



Council Members and Officials at the Annual Meeting of the Council held on 19th June 2009

LOCAL ELECTIONS 2009

Local Elections were held on the 5th June, 2009 to fill the 28 seats on Limerick County Council. The European Parliament Elections were also held on the same day. Nominations for the 2009 Local Elections were accepted from 10am on the 9th May, 2009 to 12 noon on the 16th May, 2009. Applications for inclusion in the Supplement to the Register of Electors were accepted up to and including the 18th May, 2009 and a total of 3136 names were added to the supplement in May 2009. The total Electorate eligible to vote in the Local Elections was 99,614 and the percentage poll was 60.74% which was a decrease on the 2004 figure of 62.21%.

Prior to the Local Elections a number of Councillors retired and indicated that they would not be seeking re-election; these included Councillors Noreen Ryan, Eddie Creighton, John Gallahue, James Houlihan, Patrick McAuliffe and Tom Neville.

Councillor Cormac Hurley contested the 2009 Local Election to Limerick City Council.

By order of the Minister for the Environment, Heritage and Local Government the 5 Local Electoral Areas in County Limerick were revised prior to the 2009 Local elections. This revision included the renaming of the Bruff Electoral Area as the Adare Electoral Area due to the fact that the electoral division of Bruff was transferred into the Kilmallock Electoral Area. The members are elected by the citizens of each local electoral area.

A total of 53 candidates went forward for election broken down among the five Electoral Areas. Details of the Electorate in each area and the actual turnout of voters in each case are set out in the adjoining table.

Electoral Area	No. of Candidates	No. of Seats	Total Electorate	Total Poll
Castleconnell	12	7	23,650	13,428
Kilmallock	11	5	18,995	12,528
Adare	11	7	22,155	11,828
Newcastle	10	5	19,218	12,350
Rathkeale	9	4	15,636	9,630

PRESENTATIONS TO RETIRING MEMBERS

At Meeting of the Council held on 25th May 2009, Certificates of Appreciation were presented to seven Members of the Council who were retiring and would not be contesting the Local Elections in June.



Presentation of Scroll to Councillor John Gallahue to honour his contribution and in appreciation of his 10 years' service as a public representative.



Presentation of Scroll to Councillor James Houlihan to honour his contribution and in appreciation of his 24 years' service as a public representative.



Presentation of Scroll to Councillor Tom Neville to honour his contribution and in appreciation of his 6 years' service as a public representative.



Presentation of Scroll to Councillor Eddie Creighton to honour his contribution and in appreciation of his 18 years' service as a public representative.



Presentation of Scroll to Councillor Noreen Ryan to honour her contribution and in appreciation of her 10 years' service as a public representative.



Presentation of Scroll to Councillor Pat McAuliffe to honour his contribution and in appreciation of his 10 years' service as a public representative.



Presentation of Scroll to Councillor Cormac Hurley to honour his contribution and in appreciation of his 10 years' service as a public representative.

CORPORATE POLICY GROUP

The Corporate Policy Group (CPG) is a Committee of the Council consisting of the Cathaoirleach of the Council and the Chairs of each of the Strategic Policy Committees. Membership is as follows:

Councillor David Naughton

Cathaoirleach

Councillor Liam Galvin

Chairperson of the Planning & Development SPC

Councillor Mary Jackman

Chairperson of the Environmental SPC

Councillor Tomás Hannon

Chairperson of the Housing SPC

Councillor Kevin Sheahan

Chairperson of the Social, Cultural and Community Development SPC

The CPG links the work of the different SPCs, acts as a type of cabinet and provides a forum where policy positions can be agreed for submission to the full Council which will retain the decision making authority. The CPG also monitors the performance of the local authority and plays a key role in preparing the budget. The CPG met on 4 occasions.

COMMITTEES OF THE COUNCIL

Strategic Policy Committees

Title	No. of Members	No. of Meetings
Housing	18	2
Transportation and Infrastructural	18	3
Planning and Development	18	0
Social, Cultural and Community Development	15	2
Environmental	15	2

Electoral Area Committees

Title	No. of Members	No. of Meetings
Adare Area	7	11
Castleconnell Area	7	6
Kilmallock Area	5	8
Newcastle Area	5	9
Rathkeale Area	4	9

Other Committees

Title	No. of Members	No. of Meetings
Traveller Accommodation Consultative Committee	12	2
Rural Water Committee	14	4
Audit Committee <i>December Meeting cancelled due to severe weather conditions – meeting held in January 2010</i>	5	3
Joint Policing Committee	27	4

STRATEGIC POLICY COMMITTEES

Each Strategic Policy Committee comprises of elected Councillors and Sectoral Representatives, working together in a more participative form of democracy, thereby providing a more effective policy focus on the functions and activities carried out by Limerick County Council. Each SPC is supported in its work by a Director of Services. While each SPC formulates and develops policy, the final decisions will rest ultimately with the full Council.

Planning & Development SPC

Chairperson	Councillor Liam Galvin
Members	Councillor Stephen Keary
	Councillor Mary Jackman
	Councillor Mary Harty
	Councillor Jerome Scanlan
	Councillor John Sheahan
	Councillor Patrick O'Donovan
	Councillor Patrick C. Fitzgerald
	Councillor Michael Collins
	Councillor Eddie Wade
	Councillor Noel Gleeson
	Councillor Kevin Sheahan

Sectoral Representatives

Agriculture/Farming:

Mr. Gerald Quain

Development/Construction & Business/Commercial:

Mr. Tony O'Shea

Environment:

Ms. Patti O'Neill

Community & Voluntary, including Conservation, Culture and Disadvantaged:

Ms. Ann Gill

Mr. Charles Richardson

Mr. Seamus Hunt

Environmental SPC

Chairperson	Councillor Mary Jackman
Members	Councillor Leo Walsh Councillor Richard Butler Councillor Mary Harty Councillor Stephen Keary Councillor John Egan Councillor James Heffernan Councillor James Collins Councillor Michael Collins Councillor Mike Donegan

Sectoral Representatives

Agriculture/Farming:

Mr. Eddie Scanlon

Development/Construction & Business/Commercial:

Mr. Liam Garvey,

Environment:

Mr. Patsy Peril

Community & Voluntary/ including Conservation, Culture and Disadvantaged:

Mr. Sean Hanley

Ms. Margaret Barkman

2 Environment SPC Meetings were held in 2009. Items discussed at the meetings included:

- Environmental Inspections Programme
- Report on Litter Management Activities for 2008
- IBAL Anti Litter League
- Draft Shannon River Basin Management Plan
- The 'Nitrates' Regulations
- Procedures for dealing with illegal dumping

Housing SPC

Chairperson	Councillor Tomás Hannon
Members	Councillor Rose Brennan Councillor Richard Butler Councillor William O'Donnell Councillor Mike Houlihan Councillor David Naughton Councillor John Sheahan Councillor Brigid Teefy Councillor Eddie Wade Councillor James Collins Councillor Francis Foley Councillor Eddie Ryan

Sectoral Representatives

Development/Construction & Business/Commercial:

Mr. Liam McArdle

Trade Union:

Mr. Mike McNamara

Community & Voluntary, including Conservation, Culture and Disadvantaged:

Ms. Caroline O'Callaghan

Ms. Alice McAuliffe

Mr. Jeremiah O'Connor

Ms. Ann Gill

The Housing SPC met on 2 occasions and items discussed included the following:

- Proposed leasing arrangements for Local Authority Housing
- Revised policy in relation to refusals of offers of accommodation
- Emergency housing policy

Social, Cultural and Community Development SPC

Chairperson	Councillor Kevin Sheahan
Members	Councillor Michael Sheahan Councillor Leo Walsh Councillor William O'Donnell Councillor John Egan Councillor David Naughton Councillor James Heffernan Councillor Patrick C. Fitzgerald Councillor Francis Foley Councillor Leonard Enright

Sectoral Representatives

Agriculture/Farming:

Mr. John Walsh

Development/Construction & Business/Commercial:

Mr. John Quinn

Community and Voluntary, including Conservation, Culture and Disadvantaged:

Ms. Bernie O'Sullivan

Mr. Seamus Ryan

Mr. Donal Thurlow

The Social, Cultural and Community Development SPC met on 2 occasions. Amongst the items on the work programme for 2009 were:

- Libraries
- Enterprise Strategy – Town Profiles
- Local Anti-Poverty Strategy
- Recreation Strategy and Action Plan
- Local Sports Partnership
- Soccer Development Officer

Transportation and Infrastructural SPC

Chairperson	Councillor Mike Houlihan
Members	Councillor Rose Brennan
	Councillor Liam Galvin
	Councillor Michael Sheahan
	Councillor Jerome Scanlan
	Councillor Patrick O'Donovan
	Councillor Tomás Hannon
	Councillor Brigid Teefy
	Councillor Leonard Enright
	Councillor Mike Donegan
	Councillor Eddie Ryan
	Councillor Noel Gleeson

Sectoral Representatives

Agriculture/Farming:

Mr. Aidan Gleeson

Development/Construction & Business/Commercial:

Mr. Seán Murtagh

Trade Union:

Mr. Mark Quinn

Environment:

Mr. John Dawson

Community & Voluntary, including Conservation, Culture and Disadvantaged:

Ms. Joan O'Shea

Ms. Elizabeth Stanley

The Transportation and Infrastructural SPC met on 2 occasions. Items discussed by the Committee included:

- Draft River Basin Management Plan for the Shannon Basin
- Strategic Water Plans
- Draft Burial Ground Bye-Laws
- Draft Burial Ground Maintenance & Development Strategy
- Water Services Programme

REPRESENTATION ON OTHER BODIES

Association of County and City Councils

(formerly General Council of County Councils)

Councillor Brigid Teefy

Councillor Michael Sheahan

Councillor Jerome Scanlan

County Limerick Vocational Education Committee

Councillor Eddie Wade

Councillor Eddie Ryan

Councillor Mary Jackman

Councillor Rose Brennan

Councillor Liam Galvin

Councillor Mike Houlihan

Councillor Michael Sheahan

Councillor Jerome Scanlan

Councillor James Heffernan

Mid-West Regional Authority

Councillor Mike Donegan

Councillor Noel Gleeson

Councillor John Egan

Councillor Leo Walsh

Councillor William O'Donnell

Councillor Stephen Keary

Councillor Richard Butler

Operational Committee of Mid-West Regional Authority:

Cathaoirleach - Councillor David Naughton

Councillor John Egan

Southern and Eastern Regional Assembly

Councillor Leo Walsh

Councillor Stephen Keary

Limerick Market Trustees

Cathaoirleach – Councillor David Naughton

Councillor James Collins

Councillor Eddie Wade

Councillor Mary Jackman

Councillor Michael Sheahan

Councillor Leo Walsh

Councillor Richard Butler

Councillor William O'Donnell

Councillor Tomás Hannon

Management Committee of Limerick Market Trustees:

Councillor Mary Jackman

Councillor Richard Butler

Shannon Foynes Port Company

Councillor David Naughton

Library Association of Ireland

Councillor Michael Sheahan

Irish Public Bodies Mutual Insurances:

Councillor Mike Houlihan

Local Authority Members' Association

Councillor Mary Jackman

National University of Ireland, Cork

– Governing Authority

Councillor Eddie Wade

University of Limerick - Governing Authority

Cathaoirleach - Councillor David Naughton

Advisory Committee, Graduate Medical School,

University of Limerick:

Cathaoirleach - Councillor David Naughton

Adare Heritage Trust Ltd.

Cathaoirleach – Councillor David Naughton

Limerick County Enterprise Board

Councillor Michael Collins

Councillor Mary Harty

Councillor David Naughton

Councillor Jerome Scanlan

West Limerick Resources Ltd.

Councillor Michael Collins
Councillor Jerome Scanlan
Councillor Patrick O'Donovan
Councillor Stephen Keary

Ballyhoura Development Limited

Councillor Noel Gleeson
Councillor William O'Donnell

RCCN (Rural Community Care Network)

Councillor Jerome Scanlan
Councillor Stephen Keary

Hunt Museums Trust

Councillor Mary Jackman

Regional Health Forum West

Councillor Kevin Sheahan
Councillor Rose Brennan
Councillor Richard Butler
Councillor Jerome Scanlan

Special Purpose Enterprise Company

Cathaoirleach – Councillor David Naughton
Councillor Mary Harty
Councillor Jerome Scanlan

Interagency Forum for Rathkeale Town

Councillor David Naughton
Councillor Stephen Keary

Limerick/Ballybrophy Rail Link Partnership Group

Councillor Mary Jackman
Councillor Michael Sheahan

County Rural Water Monitoring Committee

Councillor Eddie Ryan
Councillor William O'Donnell
Councillor Mary Harty

Audit Committee

Councillor Jerome Scanlan
Councillor David Naughton

Joint Policing Committee

Cathaoirleach - Councillor David Naughton
Councillor Kevin Sheahan
Councillor James Collins
Councillor Francis Foley
Councillor Mike Donegan
Councillor Patrick C. Fitzgerald
Councillor Leo Walsh
Councillor Mary Jackman
Councillor Jerome Scanlan
Councillor Liam Galvin
Councillor John Sheahan
Councillor Richard Butler
Councillor Stephen Keary
Councillor Patrick O'Donovan
Councillor Tomás Hannon

Local Traveller Accommodation Consultative Committee

Councillor Mary Jackman
Councillor David Naughton
Councillor Tomás Hannon
Councillor Francis Foley
Councillor Patrick C. Fitzgerald

County Development Board

Cathaoirleach – Councillor David Naughton
Councillor Liam Galvin
Councillor Mary Jackman
Councillor Tomás Hannon
Councillor Kevin Sheahan

Civic Receptions 2009



Councillor John Gallahue, Cathaoirleach, presenting the Scroll to Mrs. Gertie McDonnell, mother, and the family of the late Gerard McDonnell.

Limerick County Council hosted a Civic Reception at a Meeting held on 23rd March 2009, to bestow a posthumous Civic Honour on the late Mr Gerard McDonnell in recognition of his achievement for being the First Irish person to summit K2, the world's most dangerous mountain, and to acknowledge his selfless acts of courage, bravery and compassion shown to his fellow climbers during the tragic descent of K2.



Very Rev. Fr. John Leonard, P.P., Mr. Seamus Lordan, on behalf of Dromcollogher/Broadford GAA Club, Dr. Martin O'Donnell, on behalf of St. Joseph's Foundation, Mr. Simon Baker, Mr. Gerry Molyneux on behalf of Limerick Intermediate Hurling Team and Very Rev. Donal Canon McNamara, P.P.

A Civic Reception was also hosted at a Meeting held on 25th May 2009, to bestow Civic Honours on the following:

- Very Rev. Fr. John Leonard, P.P., in recognition for his meticulous scholarship and overwhelming generosity in donating his extensive Limerick collection to the University of Limerick Glucksman Library.
- Very Rev. Donal Canon McNamara, P.P., in recognition of his role as Pilgrimage Director with the Limerick Diocesan Pilgrimage to Lourdes and to honour his contribution, commitment and dedicated work for the people of County Limerick.
- St. Joseph's Foundation in recognition of the enormous contribution that St. Joseph's Foundation had made in helping people with disabilities for over 40 years.
- Simon Baker in recognition of his achievement in breaking the world record at the Dublin City Marathon for the fastest Marathon ever completed on crutches.
- Dromcollogher/Broadford GAA Club in recognition of winning the Munster Senior Club Football Championship 2008
- Limerick Intermediate Hurling Team in recognition of the achievement of winning the Munster Intermediate Hurling Championship 2008

Highlights 2009



View of St. Nessian's Road Overbridge – Limerick Southern Ring Road – Phase11



View of the Tunnel – Limerick Tunnel Project



View of the Dock Road Interchange – Limerick Southern Ring Road – Phase 11



View of Áras Mainchin Seoighe, Kilmallock.
(Picture courtesy of Christian Richter)



Official Opening of Áras Mainchin Seoighe on 23rd November 2009. L/R – Ned Gleeson, Co. Manager, Mrs. Mary Herlihy, sister of the late Mainchin Seoighe, Cllr. D. Naughton, Cathaoirleach and Cllrs. Donegan, O'Donnell, Houlihan and Ryan.



Councillors and Former Councillors for the Kilmallock Electoral Area at the Official Opening of Áras Mainchin Seoighe. Back Row L/R – M. Barry, Cllr. J. Heffernan, Cllr. M. Houlihan, Cllr. M. Donegan, B. Danaher, M. Callaghan, W. Sampson, Cllr. W. O'Donnell, Cllr. E. Ryan. Front Row L/R – E. Creighton, J. Gallahue, J. Houlihan and P. McAuliffe



Launch of the Inaugural "Contribution to Sport Award" in honour of the late mountaineer, Gerard McDonnell - L/R Cllr. D. Naughton, Cathaoirleach, J.J McDonnell, Gerard's brother, Gertie McDonnell, Gerard's mother and Phelim Macken, Co. Limerick Local Sports Partnership.



Delegation from Langonnet, France, on their visit to County Hall in August 2009



Delegation from Sioux Falls, South Dakota, on their visit to County Hall



Cllr. D. Naughton, Cathaoirleach, and Cllr. W. O'Donnell, Leas Chathaoirleach, at the Annual Meeting of the Council held on 19th June 2009.



Presentation of ISO 9001:2000 Certificate to Rathkeale Fire Station by Michael Kitt T.D., Minister of State at the Department of Environment, Heritage and Local Government



Signing of Contract for Kilmallock Fire Station

Celebrating Community Events 2009



Junior School Wardens – Ballylanders National School.



Participants in the Askeaton Men's Health and Fitness Programme organised by the County Limerick Local Sports Partnership.



Cllr. D. Naughton, Cathaoirleach, and Ned Gleeson, County Manager, at the Launch of the Department of Transport funded Smart Travel Project in Kilmallock.



Limerick County Civil Defence Team participating in National Exercise, Kilworth, Co. Cork.



Winners in the Burial Ground Competition - Cllr. D. Naughton, Cathaoirleach, Paul Crowe, Director and Cllr. P. Fitzgerald with members of the Anhid Burial Ground Committee, Winners of the Rathkeale Area – Ancient Category



Winners in the Burial Ground Competition - Caherelly Burial Ground: Annacotty Area and Overall Winner - Modern Category



Winners in the Burial Ground Competition - Ardagh Burial Ground: Newcastle West Area - Winner - Modern Category



Winners in the Burial Ground Competition - Ballinard Burial Ground: Kilmallock Area - Winner - Ancient Category



Safe enjoyment of canoeing at "The Sandy" on the Shannon at Plassey – September 2009



County Limerick Youth Theatre members filming 'The Voyage of the Orphans'



Christ the Saviour N.S., Ballingarry – Awarded a Green Flag at An Taisce Greenschool Award Ceremony held in Cork



Civil Defence on Duty at Milford Harvest Fair



Winners at the Awards Ceremony – Limerick in Bloom Competition 2009



Comhairle na nÓg in the Council Chamber, County Hall



Cllr. D. Naughton and Cllr. J. Sheahan try out the hoist on the new Fire Tender at Rathkeale Fire Station.



Limerick County Council Staff presenting a cheque to Sister Phyllis Donnelly, Milford Care Centre, - Limerick 2009 Women's Mini Marathon



Cllr. W. O'Donnell, Leas Chathaoirleach, presenting the Golden Mile Award 2009 to Michael Noonan, Secretary of the Crean Development Group, overall winners, in the presence of Ned Gleeson, County Manager.



Cllr. D. Naughton, Cathaoirleach, at the celebrations in the University of Limerick, on the occasion of the conferring of an Honorary Degree of Doctor of Science on Declan J. Kidney in September 2009



Environment Staff Gretta Purcell and Helen Rooney with shoppers at Tesco, Newcastle West, launching a series of anti-litter days.



Environment Staff – Helen Rooney and Gretta Purcell at the Gum Litter Task Campaign at the Crescent Shopping Centre, Dooradoyle



Lisnagry N.S. – Awarded a Green Flag at An Taisce Greenschool Award Ceremony held in Cork



Launch of Limerick Leader Women's Mini Marathon



Launch of Limerick Leader Women's Mini Marathon



Writer Judi Curtin meeting with children from Scoil Iosaf, Newcastle West.



Launch of the Mini Pitch Scheme – Abbeyfeale – May 2009



Buntús Soccer Teacher Training in Adare



Cllr. J. Gallahue, Cathaoirleach, planting an oak tree at Lough Gur to launch the Annual Tree Planting Week 2009, in the presence of Cllr. J. Houlihan and Staff from Limerick County Council.



SERVICE REPORTS



Transportation and Water Services	23
Housing	31
Community and Enterprise, Human Resources and Corporate Services	34
Planning and Development	41
Environment, Emergency Services and Consumer Affairs	45

Limerick County Council
Comhairle Chontae Luimnigh

Transportation and Water Services



Paul Crowe
Director of Transportation
and Water Services

Roads

To provide and maintain a safe and effective transportation network for all road users, incorporating the principles of sustainable development and social inclusion.

MAJOR ROAD SCHEMES

Limerick Tunnel Project

After more than three years of intensive work, the Tunnel Project has now entered its final phase. Confidence remains high that the scheduled opening date of September 2010 will be achieved or bettered.

By year end, all civil and building works on the tunnel itself had been completed, as had work on nine of the ten bridges and numerous other structures, with substantial progress also made on the two toll plazas and administration buildings. Road works on the south side of the river, i.e. from Rossbrien to the Dock Road, were 95% finished, which has then allowed significant resources to be deployed to the north side to speed up completion from Coonagh to Cratloe moyle and to Clonmacken.

With the civil works nearing completion, much of the focus has now switched to the installation of the mechanical, electrical, communications and tolling systems. The mechanical works in the tunnel include the ventilation systems, pumps and sumps to manage accidental spillages, fire fighting, water storage and distribution systems. The electrical works include standby power generation, the tunnel lighting, fire alarm, noxious gas detection, communications and warning systems.

This critical piece of infrastructure, after many years of planning, design and construction and, in which Limerick County Council has been so centrally involved, is about to be unveiled to the public within a few months and is set to bring significant economic and environmental benefits to Limerick city and county and the wider Mid-West region.



Bunlicky Lake and Causeway - Limerick Tunnel Project



Construction of Toll Plaza - Limerick Tunnel Project

M20 Cork to Limerick

2009 saw major strides in the progression of this scheme through the design phases and up to the preparation of the Motorway Order and Environmental Impact Statement. It is expected that these statutory procedures will be commenced early in 2010.

N21 Abbeyfeale to Adare

The project progressed through the route selection phase of the project. Route corridor options were developed and examined and a public consultation into the route selection process was also held in 2009. Environmental Consultants are engaged by Limerick County Council to advise in relation to environmental aspects of the project through its development. A preferred route for the project is expected to be identified in 2010.

N21 Adare Bypass

A revised route for the N21 Adare Bypass was identified in 2009. This route is to the south of Adare town. The scheme was progressed through the various design stages towards the finalisation of the Compulsory Purchase and Environmental Impact documentation. It is expected that the statutory procedures for this project will be commenced in 2010.

M7 Nenagh to Limerick Project

Work continued on this major infrastructural project through 2009, culminating in the opening of the first section of the overall project towards the end of 2009. Work will continue in 2010 to finalise the remaining sections of the Motorway which are expected to be fully open by Summer 2010. The new improved road, once complete, will enhance the daily commute from towns like Nenagh and Roscrea to Limerick for work and this in turn will attract more people to live in the region, thus benefiting all the local communities. Once completed and when coupled with adjacent schemes we will see a continuous Motorway / Dual Carriageway between Limerick and Dublin.



View of section of the M7 - Nenagh to Limerick Motorway



Monaleen Road

Smarter Travel

As part of the "Smarter Travel" initiative a cycleway retrofit was carried out on the Kilmurry Road Upper.

Specific Improvement Works

A grant of €1,670,000 was received for improvement works on Regional Roads in 2009. A major portion of this was expended in Remedial Works in West Limerick which arose as a result of major flood events concentrated around Newcastle West during July and August in 2008. These works were spread across that area generally and primarily involved:

- Bridge replacement and repairs
- Landslide remediation
- General road and drainage system repairs



Replacement bridge at Duncaha, Shanagolden

MAIN ROAD WORKS PROGRAMME 2009

- Resurfacing works were carried out on the following National Roads in 2009 including the N21 west of Templeglantine, N7 Daly's Cross and on the N69 west of the Askeaton By-Pass.
- Road Safety Remedial measures were carried out on N21 at Devon Cross.
- Traffic Calming measures were extended at Daly's Cross.
- Pedestrian Crossings were provided on N69 at Foynes and Glin.

Other Road Works completed in 2009

Monaleen Road Improvements

This involved provision of new footpaths, traffic calming measures, public lighting, traffic signals, pedestrian crossings, road overlay and improved road markings and signs. This work was funded from the Development Fund.



Landslide remedial works nearing completion at Rathcahill East, Newcastle West



Installation of replacement culvert at Bauraneag, Carrigerry

Low Cost Safety Improvements

A grant of €205,000 was received for Low Cost Safety Improvements at five locations in the County. The works involved road realignment, road markings and enhanced signage.



Low Cost Safety Measure in Rathkeale - Enhanced sight lines at junction of R518 and L1219

Surface Dressing and Reconstruction

The Council provided Surface Dressing on 15km of Regional Roads and 102km of Local Roads in 2009. In addition reconstruction works were carried out on 7.4km of Regional Roads and 57km of Local Roads in the same period.

Public Lighting

The number of public lights maintained by the Council is now 10,800. This is a significant increase over previous years and is due to a number of housing estates being taken in charge by the Council as well as improved lighting at junctions such as O'Rourke's Cross, Devon Cross, Fedamore Cross, Drombanna Cross, Nelson's Cross, Castleconnell and Bog Road Junction on the N7.

In December, 2009 a contract was signed with Airtricity for the maintenance of public lighting in the County. This will involve repairing defective lights and erection of new light poles where necessary. Previously this work was carried out by the ESB.

Regional Road Signposting

A grant of €173,600 was received towards the programme to

enhance Signage on Regional Roads in the County. Works during the year were concentrated on the following routes:

- R505 Doon – N24
- R506 Cappamore - Annacotty
- R512 Kilmallock - Limerick
- R513 Caherconlish - Mitchelstown

Flooding in Newcastle West

In co-operation with the OPW an early warning flood alert system has been installed at the North Quay, Newcastle West, which provides an audible alert in the form of a siren and also uses modern technology in the form of SMS messaging to any appropriate mobile phones.

Winter Maintenance

As a result of the prolonged period of freezing weather over the Christmas and New Year period, Council staff were on regular alert pre-treating all national route roads to keep them clear of ice. Considerable commitment was also given to maintaining Regional roads clear for commuting traffic. Snow clearance was carried out to maintain traffic clearance and also to facilitate local events and occasions where possible and available resources permitted.

ROAD SAFETY

Lifesaver Project

The Lifesaver project is a collaborative effort between An Garda Síochána, Limerick Ambulance Service, The H.S.E. Limerick City and County Fire Service and the Road Safety Departments of Limerick County and City Councils. The project is designed to provide the next generation of drivers with an appreciation of the consequences of road traffic accidents on the victims and their families and encourage safer driving among this age group.

As a result of the success of the Lifesaver Project in 2008 two presentations were made in 2009. One took place on 31st March at Limerick Institute of Technology which was aimed at 3rd level students at the various colleges/universities in Limerick. The second presentation took place at the Crescent Shopping Centre from 19th to 22nd October and was aimed at 2nd level students from schools in Limerick city and county. Both events were well attended.



Lifesaver accident re-enactment at Crescent Shopping Centre, Dooradoyle

Junior School Warden Scheme

In 2009 two schools in Rathkeale and one in Ballylanders continued to operate the Junior School Warden scheme. The successful operation of the scheme at these locations is a tribute primarily to the commitment of the pupils, but also of the teachers, parents and the Gardaí.

The Annual Junior School Warden Regional Finals were held in Cashel, Co. Tipperary in May 2009. The three schools from Limerick participated together with schools from Kerry, Tipperary, Clare and Waterford. The Limerick schools did exceptionally well with the Ballylanders team claiming first place in the competition and St. Mary's Girls School, Rathkeale coming in second place. Congratulations to the winning teams and well done to all who participated.

Cycling Safety Training

A total of 18 Primary Schools in County Limerick with 672 pupils participated in the Cycling Safety and Skills Programme in 2009. The programme provides children with an understanding of cycling safety theory, bicycle care and practical bicycle safety and skills training before they venture onto the public roads. This programme was subvented by Limerick County Council and also received support funding from the Road Safety Authority.

HORTICULTURE

National Tree Week 2009 took place from 2nd to 8th March and was again jointly sponsored by O2 and Coillte. Councillor John Gallahue, Cathaoirleach, Limerick County Council, launched the week by planting an oak tree in Lough Gur.

Community groups and schools were provided with 8,000 saplings to plant in various areas around the County during this week.

Grass/Hedgecutting

The grass-cutting programme continued with approximately 355 acres of grass cut during the year. This comprised mostly of large open space areas in Housing Estates. Grass/hedgecutting on the National Primary and National Secondary roads and the City Environs were carried out on two occasions during the year.

Weed Control

The Horticulture Section controls the use of Weedspraying chemicals by the Council. This has reduced the quantity used and only two of the most environmentally friendly chemicals are permitted. Examples of use of these chemicals included the control of Giant Hogweed on Plassey Walk and the supervision of Ragwort control on the Southern Ring Road Dual Carriageway/Motorway.



General Maintenance

The Council's Horticulture Section was responsible for ongoing maintenance of public parks and scenic areas in the County such as the Clare Glens, Lough Gur, Monaleen Park, Adare Town Park, the Demesne in Newcastle West and Plassey Walk, in addition to maintenance and planting on roundabouts throughout 2009.

The Horticulture Section also maintained the grounds of the Council Headquarters at County Hall as well as the Area Offices in Rathkeale, Kilmallock, Newcastle West and Annacotty.

Dangerous Trees

The section also dealt with a number of dangerous trees and supervised the inspection and cutting of same during the year.

Golden Mile

Despite lack of funding, 2009 contestants wished to go ahead with the competition. In the end private sponsorship for the prize fund was gratefully received from Cold Chon (Galway). This year the numbers were down but not the standards. Overall winner was Crean Development, this mile had the distinction of being in the competition from the very beginning in 2004. Category awards went to Broadford Development Association Ltd. for Communal Input, Croom Abu Walking Club for Hedges; Kilmeedy Community Development Group Ltd. for Trees and Structures; Kiltelly, Dromkeen Tidy Towns Committee for Litter and Road Safety. The awards ceremony was run in conjunction with the Burial Ground Awards and guest speaker on the night was John Murphy, Waxwing Wildlife Productions Ltd. who treated the audience to a dazzling array of slides of flora and fauna to be found in the trees and hedges of Co. Limerick.

Water Services

To ensure that the people of County Limerick have access to potable water, and to benchmark public water supplies against international standards.

To progress towards the improved delivery of a municipal sewerage service to the people of County Limerick, with a view to achieving compliance with relevant standards.

Limerick County Council's Water Services Department's aims are;

- To ensure, in as far as practicable, that each household shall have access to a potable water supply monitored in accordance with the provisions of the Drinking Water Regulations.
- To improve the wastewater infrastructure capacity throughout the County having regard to the requirements of the Water Framework Directive.
- To promote the Rural Water Programme through the provision and enhancement of water services infrastructure by private group schemes.
- To develop the provision of water services infrastructure consistent with the need for water conservation, sustainability and to meet the future demands in the County.
- To implement National and EU legislation including the Water Framework Directive.
- To develop initiatives for small towns and villages in order to accelerate the provision of Water Services infrastructure in these locations.

Whilst it is acknowledged that a need still remains to improve infrastructure in certain locations, these deficiencies are being addressed through the various capital programmes.

In association with the Health Service Executive, Limerick County Council continues to strictly monitor its water supplies through the regular testing of water samples and the daily site sampling by caretakers of water supplies. Drinking water monitoring data is now available to view from Limerick County Council's website where data for public water supplies and private group water schemes is provided.

MAJOR CAPITAL SCHEMES

The Council's aim is to provide water and wastewater services to existing settlements and also to ensure that infrastructural deficiencies do not hinder the growth of those settlements.

The Council receives grant assistance from the Department of the Environment, Heritage and Local Government, under the National Water Services Investment Programme towards the costs of major projects. However, the Council must fund a significant portion of the capital costs of the major schemes under this programme.

During 2009 Limerick County Council submitted a new Assessment of Needs in accordance with Department of Environment, Heritage and Local Government guidelines. In assessing priorities under the Assessment of Needs, account was taken not only of environmental imperatives to advance schemes but also the speed with which certain schemes would be advanced to construction. There are a number of schemes in County Limerick which could readily progress to construction, were adequate finance available.

Sewerage Schemes

- Significant progress has been made in relation to detailed design of schemes to serve Kilmallock, Mungret, Patrickswell and Adare. The Patrickswell Sewerage Scheme was tendered in late 2008. While the 'preferred tenderers' have been identified for both the Civil Contract and the Mechanical and Electrical Contract, the funding mechanism has to be finalised before contracts can be awarded. The Mungret Sewerage Scheme was also tendered in 2009, the tender report and recommendation to appoint a contractor is with the DOEHLG for their approval. The detailed design and contract documents for the Kilmallock Sewerage Scheme were completed in 2009 and are waiting DOEHLG approval. The pre-qualification process for determining a list of suitable contractors has also been completed. Tender documents will be issued to the pre-qualified contractors following DOEHLG approval.
- Preliminary Reports have been completed on projects to serve Askeaton, Foynes, Shanagolden, Glin, Athea, Dromcollogher, Hospital, Pallasgreen, Bruff and Montpelier. These Preliminary Reports have been submitted to the DOEHLG and approval is now awaited.

Water Schemes

- The Council, in co-operation with Limerick City Council, is continuing to progress the development of trunk water mains systems into County Limerick. This will be facilitated by the upgrade of the City Council's water treatment plant at Clareville. Construction of a further element of Trunk Watermain proceeded during 2009 with the completion of the Patrickswell- Mount Earl section.
- Planning is being progressed to serve areas of East Limerick such as Caherconlish, Cappamore, Pallasgreen, Doon and Oola. A Preliminary Report for this project was completed and submitted to the DOEHLG and approval is now awaited.
- The detailed design and contract documents for the Croom Trunkmain Scheme were progressed in 2009. The final design and contract documents will be submitted to the DOEHLG in 2010.

SMALL TOWNS AND VILLAGES INITIATIVE

The Small Towns and Villages Initiative adopted by the Council in 2003 promotes the economic development of the County's smaller population centre and is a partnership with the private sector. The developer provides water services infrastructure in excess of his/her development requirement, the Council then makes a financial contribution and grants the developer a specified period during which anybody else wishing to avail of a connection has to reimburse the developer on a pro rate basis depending on the number of connections. Thereafter the infrastructure is transferred to the ownership of the Council.

During the year new/upgraded plants were handed over to the Council at Cappamore, Kilmallock, Pallaskenry, Adare and Doon. A new Sewerage Collection System and Waste Water Treatment Plant were commissioned in Feenagh in conjunction with the Corrandeel Voluntary Housing Organisation.



Upgraded Sewerage Treatment Plant in Cappamore



New Sewerage Collection System and Wastewater Treatment Plant in Feenagh

WASTE WATER DISCHARGE REGULATIONS 2007

Limerick County Council has 47 Waste Water Treatment facilities. In accordance with the Waste Water Discharge Regulations 2007, it has made 24 applications to the Environmental Protection Agency (EPA) for Waste Water Discharge Licences and 23 applications for Certificates of Authorisation. All applications were made between December 2007 and December 2009 based on criteria set out in the Regulations. To date the EPA has granted 9 discharge licences and are assessing the remaining applications on an on-going basis.

WATER CONSERVATION PROJECT

The Water Conservation Project continues to have a considerable positive impact on the delivery of water to the people of County Limerick.

The installation of districting metering by direct labour in conjunction with the Area Offices is now substantially complete in Annacotty, Rathkeale, Newcastle West and Kilmallock Areas.

The expansion of telemetry across the County has kept pace with the meter installation programme which has allowed for a more rapid response to situations as they arise both in terms of leakage control and plant/scheme operations. In particular, data gathered and available to responders was extremely valuable in the decision making process during emergency situations experienced throughout the year.

RURAL WATER PROGRAMME

During 2009, a total block grant allocation of €3.04m was allocated to the Rural Water Programme from the Department of the Environment, Heritage and Local Government.

The following are the measures, which were progressed during 2009:

- **DBO Project for Group Water Supply Schemes**

The DBO Project is now in the Operation and Maintenance Phase and is operating successfully. A project on the installation of bulk meter telemetry was completed in 2009.

- **Variations to DBO Project for Group Water Supply Schemes**

A new source was commissioned on a scheme which had been experiencing nitrate problems on the original source. A cryptosporidium risk assessment was carried out on all 18 DBO Schemes. Schemes identified as either medium or high risk had U.V. Treatment installed on their supply. A total of €400,000 was invested in the above works.

- **Advance and Enabling Works for the DBO Project Bundle**

A total of €130,000 was invested in Advance DBO projects in 2009.

- **Refurbishment Grants to Existing and New Group Water Supply Schemes**

During 2009, €560,000 was invested in refurbishment/upgrade and €64,000 on new group water schemes.

- **Interim Works on Group Water Schemes**

Works such as the installation of additional treatment equipment and chlorine monitors/alarms on group water schemes were carried out. These works were designed to improve existing water quality in the short-term. A total of €94,000 was spent on these works.

- **Refurbishment and Takeover of Group Water Supply Schemes**

A total of €1.4m was spent on takeover projects during 2009. Also seven schemes were formally taken in charge during the year.

- **Small Capital Schemes**

Projects under this heading are part funded by the DOEHLG and part funded by Limerick County Council and works were undertaken on both small public water and sewerage schemes under this category. A total of €900,000 was spent on these works.

- **Subsidy to Group Water Supply Schemes towards operational costs**

The total value of grants paid under this action during the year amounted to €1,101,967.

- **Grants for Individual Well Supplies**

Grants to the total value of €148,000 were paid out during 2009.

- **Rural Water Monitoring Committee**

Four meetings of the committee took place during 2009 and this group plays an active role in monitoring the projects adopted under the rural water programme.



UV Treatment Equipment installed at Coshma/Killeen Group Water Scheme

BURIAL GROUNDS

The Council encourages the work of the local burial ground committees by means of a grant each year. Over 110 groups who look after 176 burial ground received the grant in 2009. An awards scheme to highlight and reward groups who have shown particular commitment and initiative in following best practice in their work, with a prize giving ceremony was held in County Hall on 14th December, 2009. Guest speaker on the evening, Mr. John Murphy, Birdwatch Ireland, Waxwing Wildlife Productions, former Biodiversity officer in Clare County Council.

The winners for the Burial Ground Competition under the category of Ancient were as follows: Annagh Burial Ground, Ballinard Burial Ground, Killeedy Burial Ground and Anhid Burial Ground. The overall winner of the Ancient Category was: Killeedy.

The winners of the Burial Ground Competition under the category of Modern were as follows: Caherelly Burial Ground, Kilfinane (New) Burial Ground, Ardagh Burial Ground and Reilig Mhuire Askeaton Burial Ground. The overall winner in the Modern Category was: Caherelly.

Housing

To ensure that all people of County Limerick have adequate accommodation appropriate to their needs



Jimmy Feane
Director of Housing



Housing Development at Lismakeera

A total of 54 houses were completed during 2009 at the following locations:

Location	No. Of Houses
Bruff	16
Tournafulla	7
Askeaton	21
Pallaskerry	10
Total	54

25 No. Houses are currently under construction in Rathkeale.
21 No. Houses were purchased in 2009.
5 No. Demountable Type Dwellings were provided in 2009.

The expenditure for the construction and purchase of houses for letting came to approximately €12.5m

At the 31st December 2009 there were 2,073 dwellings in Council stock.

APPLICATIONS FOR HOUSING ASSISTANCE

Scheme	Applications	Approvals	Total Value of Approvals
Shared Ownership Scheme	8	Nil	Nil
Affordable Housing (Part V)	17	10	Nil
House Purchase Annuity Loan	1	1	€150,000
Tenant Purchase Annuity Loan	7	Nil	Nil
House Improvement Loan	Nil	Nil	Nil
New Grants Scheme	181	128	€1,109,311
Caravan Loan	1	1	€5,787

AFFORDABLE HOUSING

Rental Accommodation Scheme (RAS)

This national scheme caters for the accommodation needs of persons in continuous receipt of long term rent supplement and who are also deemed to have a long term housing need.

It entails the medium to long-term rental of private rented accommodation and also rent payment support for eligible tenants in voluntary housing accommodation. The RAS Unit was established in late 2006 and at the 31st December 2009, a total of 275 clients had been transferred onto the RAS scheme in the County.

It is envisaged that as the slowdown in construction of Council housing continues, that RAS will play an ever-increasing role in meeting the social housing requirements of eligible clients in the years ahead.

Standards for Private Rented Accommodation

Local Authorities are responsible for the inspection and enforcement of minimum standards for private rented accommodation. During 2009, 245 inspections of private rented accommodation took place in County Limerick, representing a 30% increase in the amount of inspections over the 2008 figure.

Long Term Leasing Scheme

The Department of the Environment, Heritage and Local Government early in 2009 introduced this new leasing initiative for all housing authorities. It entails the long term leasing of housing units over a 10-20 year period to accommodate qualified applicants on a local authority's housing waiting list.

During 2009, Limerick County Council advertised on two separate occasions for expressions of interest from landlords/developers and work is ongoing in relation to the expressions of interest received.

VOLUNTARY HOUSING

The Voluntary Housing Forum met 4 times during 2009 and discussed a range of issues relating to the Voluntary Housing Sector's activities.

The Housing Services Company has been very active during the year in the delivery of a range of services to the members of the Voluntary Housing Association including: -

- Health & Safety Advice
- Housing Care and Development
- Development of Policy
- Support and Advice
- Housing Management

50 units of accommodation were provided by the Voluntary Sector during the year and a further 154 units were at various stages in planning.

Other statistics relating to the Housing Section's activities in 2009 were:

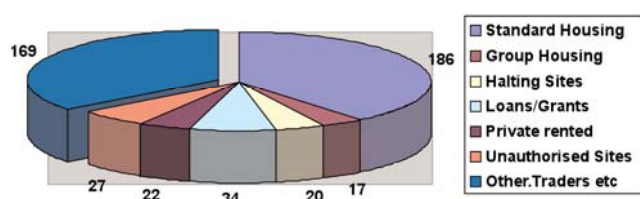
- There were 1,300 applicants on the Housing list at the end of 2009.
- There were 156 Housing Allocations made comprising newly constructed houses and casual vacancies.
- Rental income for the year amounted to €5,305,711. The average rent paid by Council tenants was €50 per week.
- The average all-in cost including land costs, fees, etc. varied between €151,000 for a two-bedroomed one storey unit and €168,000 for a three-bedroomed unit.
- 6 No. Units of Accommodation were improved under the Remedial Works Scheme.
- 55 No rural houses were refurbished under the Refurbishment of Rural Dwellings Programme.
- 5 No. Demountable Houses were provided for qualified applicants.
- 3 No. privately owned houses were refurbished under the Improvement Works in Lieu of Rehousing Scheme.
- 2 No. Local Authority dwellings were provided with extensions under the Extension to Local Authority houses programme.
- 16 No. Local Authority houses were modified under Adaptation Works to Local Authority houses programme.

TRAVELLER ACCOMMODATION

Implementation of the new Traveller Accommodation Programme 2009 -2013 commenced this year and 100% of the targets contained in the programme were achieved in year one. A new Local Traveller Accommodation Consultative Committee was also established in 2009. The new committee met on two occasions following its appointment. The committee consists of elected members and officials of the Council and members of the Traveller Community.

In November 2009, there were two hundred and forty three Traveller families living in accommodation provided by or acquired with assistance from Limerick County Council. There was an estimated one hundred and sixty seven Traveller trader families in the county in November 2009.

Annual Count of Traveller Families - November 2009.



Limerick County Council is committed to providing quality accommodation and accommodation related supports to members of the Traveller Community. The need for an integrated approach in the delivery of accommodation is critical and Limerick County Council is a key player in the delivery of the Integrated Strategy for the delivery of Traveller Services.

HOMELESS SERVICES

The provision of homeless services is a specialist housing provision and is a dedicated service for persons presenting as homeless. In 2009, one hundred and seventy nine cases presented as homeless or in danger of becoming homeless. Almost half of these (47%) contacted the homeless service as a result of eviction, domestic violence or family disputes. The homeless service, which is delivered in partnership with the Health Services Executive, responds to all homeless situations and was a critical service in the delivery of supports to families affected by flooding in November 2009.

The Homeless Forum for County Limerick met on 3 occasions in 2009 and this forum is comprised of representatives of appropriate voluntary and statutory agencies.

ESTATE MANAGEMENT

The provision of estate management supports and services is central in the delivery of Housing Services. The primary objective of estate management is to ensure that all residents in Local Authority estates enjoy the full benefits of their community and that issues of anti-social and criminal behavior are dealt with. Active resident participation is viewed as being critical in achieving this and supports are provided to assist residents establish resident associations. In addition to this resident participation is assisted in Newcastle West and Cappamore by the provision of two Community Houses, which facilitate the provision of community-based services. Funding was secured in 2009 to assist communities in selected estates to develop resident associations and develop a greater sense of community and ownership in their living environments. This project will commence in 2010.

A total of 148 new tenants were offered pre-tenancy training courses organised by the Housing Services Officer. These courses provide support and guidance for new tenants to ensure that all new tenants and existing estate residents achieve positive gains when housing is allocated.

Improvement works continue to be undertaken in some local estates in consultation with residents. In 2009, improvement works were completed in a number of areas including Ardagh, Cappamore, Murroe, Croom, Bruree and Rathkeale.

Limerick County Council is committed to providing quality services and supports to tenants and the involvement of tenants and other agencies is critical in the delivery of these services.

Community and Enterprise, Human Resources and Corporate Services



Josephine Cotter Coughlan
Director, Community and
Enterprise, Human Resources
and Corporate Services

Community and Enterprise

To promote the economic, social and cultural development of County Limerick and to support the implementation of the County Development Board's Strategy 'Working Together for a Better Future'

Business Support Unit

Limerick County Council has established a new Business Support Unit aimed at maximising economic activity and employment opportunities in County Limerick.

The Business Support Unit is to act as point of contact within Limerick County Council to facilitate and encourage economic and business development in County Limerick and ensure a quick and co-ordinated response to existing and prospective businesses by acting as an interface with local authority systems e.g. Planning, Water Services, Environment, Roads, etc.

The Unit also works in co-operation with a number of other public agencies such as the IDA, Enterprise Ireland, Limerick County Enterprise Board and Local Development Companies to assist and support projects and entrepreneurs in the county.

Links are being developed with local Chambers of Commerce, employers' groups, community enterprise groups and other interested parties to further develop Limerick as a business location and to promote and highlight the many advantages the County has to offer business, whether starting out, expanding or re-locating.

Annual Contribution Scheme

The Annual Contribution Scheme is administered by the Community and Enterprise Department and provides financial assistance towards the activities of various bodies. Requests are received on an ongoing basis for assistance from this fund. Some applicants have parent bodies at national or county level while others are specific to Limerick. Traditionally the scheme has been used to support a number of special interest tourism, arts or cultural projects/facilities in our towns as well as some facilities/services in the City and Environs which have a regional significance. Organisations involved in providing services to youth or in such areas as animal welfare, marine rescue, disability, conservation and recreation/amenity have all been previous beneficiaries from the fund.

The sum provided for operation of the scheme in 2009 was €150,000.

LIMERICK COUNTY DEVELOPMENT BOARD

Social Inclusion Measures Committee Activities

Joint City and County Integration Working Group

The Joint City and County Integration Working Group (IWG), consisting of statutory, community and voluntary agencies from Limerick City and County having identified an information gap concerning both the experiences of ethnic minorities in accessing local services and the current delivery of services locally, proceeded to develop an Integration Plan. In December 2009 the Integration Plan was in the final stages of editing and is due for publication in March 2010. The Integration Plan identifies key Actions for implementation by the various agencies who participate in the IWG.

Interagency Steering Committee for Delivery of Services to Travellers

In 2009 the Interagency Steering Committee for the Delivery of Services to Travellers met on 5 occasions and reviewed progress reports which had been submitted from the 4 Sub Groups. These 4 Sub Groups represent different areas in County Limerick as follows:

- Newcastle West / Abbeyfeale
- Askeaton / Rathkeale
- City Environs
- Kilmallock

Each of the 4 Sub Groups has representation from 2 members of the Travelling Community.

Funding had been granted by Pobal for a number of initiatives as follows:

1. Social Integration of Traveller Women and Children through physical activity and sport.
2. Support Local schools through School completion projects for placement of students from Transition Year and Leaving Cert Applied in work experience.
3. Information Sessions on Local Services.
4. Askeaton Community Relations Project.
5. Educational Development and Leadership in U.L.
6. Rathkeale Integration Initiative.
7. Multicultural Awareness Training.

All of these projects were completed in 2009

Disability Sub-Group

The Disability Sub Group although initially set up for 2008 continued working into 2009. The main focus of the Sub Group in 2009 was around the issue of Rural Transport and a special meeting was organised by Ms. Toni Gleeson of the Disability Federation of Ireland, where a considerable number of organisations took part. Participants gave details of the number of vehicles at their disposal that could be availed of by various organisations and a matrix of transport availability in Limerick City and County was compiled.

A Directory of Services for the Kilmallock area was also completed

COUNTY LIMERICK LOCAL SPORTS PARTNERSHIP

2009 saw the continued implementation of the Sports Strategy and full delivery of the Action Plan. The role of the County Limerick Local Sports Partnership (LSP) is based around information, education and implementation of programmes to key target groups. In 2009, the LSP completed the Buntús Play and Spóirt role out to 115 of the 118 primary schools. €81,000 in equipment, training and resources have been invested in these County Limerick schools. 350 coaches/leaders completed education programmes in Buntús Start, Ethics and Active Leadership. In addition, in excess of 500 coaches attended training/seminars on CPD throughout the year.

230 teenage girls from 8 post primary schools and 3 communities (Doon, Cappamore and Hospital) participated in a number of projects including a research project in partnership with UL based around participation in physical activity. This research will serve as a template for the provision of physical activity opportunities for teenage girls with a view to increasing participation numbers.

The LSP completed a number of programmes targeting disadvantaged youths to engage in meaningful physical activity in Askeaton, Kilmallock, Newcastle West, Abbeyfeale, Croom, Athea and Shanagolden. Examples of programmes include: First Tee Golf, Boxing, Gym and Pool sessions, Soccer, Martial Arts and Health & Wellness.

An extensive programme of activities was developed by the Sports Inclusion Development Officer (Siobhán O'Malley) in partnership with the City LSP for people with a disability across the County.

The LSP also supported older adult groups in education, training and sports fests with a view to increasing membership numbers and quality of programmes available to participants.

The LSP presented its inaugural "Contribution to Sport Award" in December 2009.



Getting the right balance for health and fitness – Active Girls' Programme in Hospital School



Sport – as competitive as ever!! Older Adults in Adare

Soccer in the Community Development Officer

Mr Conor Nestor FAI Development Officer for County Limerick continued his work in the county. This position is a joint initiative between Limerick County Council and the Football Association of Ireland.

COMMUNITY AND ENTERPRISE

Tourism Activities

The main focus of the County Limerick Tourism Forum in 2009 was the development of the website "Discover Limerick.ie". The Tourism Forum consists of Shannon Development and has representation from various members of the tourism trade and also Local Development Companies. Fee proposals were sought from a number of Website specialised providers and the contract was awarded to Digino. The cost of the development of the website is being met jointly by Limerick County Development Board and Shannon Development.

The Council was awarded capital funding under Fáilte Ireland's Tourism Product Development Scheme and developed a number of projects including:

- Lough Gur
- Great Southern Trail
- Ballyhoura Cycle Hub
- Glin Tourism Amenities

Tidy Towns

Two Tidy Towns initiatives which were launched in 2008 were also held in 2009.

- The Priming Grant to assist people with the cost of purchasing trees, shrubs, street furniture etc. Some 48 applications were received from local groups such as Residents' Associations, Tidy Towns Committees and various Action Groups. The amount of the grant had been reduced to ?100 in 2009 from ?500 in 2008 due to the economic climate.
- Limerick in Bloom Competition was organised with the concept of promoting community involvement in the improvement and enhancement of the local environment. Shannon Development sponsored this competition in which a total of 28 entries were received and prizes up to a cost of €1,500 were awarded at a special Awards Ceremony. The overall winners in 2009 were Adare Tidy Towns and Development Association.



Adare Tidy Towns and Development Association - Winners at the Awards Ceremony of Limerick In Bloom Competition

Playgrounds

A new playground was completed in Castleconnell in 2009. The Council also assisted in the development of a community playground at Glin.

Mini-Pitches

The 5 pitches at Abbeyfeale, Cappamore, Hospital, Rathkeale and Patrickswell were completed in 2009. The mini-pitches were launched in May 2009 at an official opening attended by the Football Association of Ireland and the Department of Arts, Sport and Tourism.

Pride of Place 2009

County Limerick continued its recent tradition of success in the Pride of Place competition with Glin winning its population category, and Broadford coming runner-up in its population category. Limerick was also represented by Bruff.

Comhairle na nÓg

The 2009 Comhairle na nÓg was held on November 20th 2009, the eighth Comhairle held in County Hall. A total of 65 representatives, 29 males and 36 females from 15 post-primary schools, 3 voluntary youth groups and 5 groups working with

hard to reach and seldom heard young people in County Limerick attended. The Comhairle provided a forum for young people aged 12 – 17 to discuss issues affecting their lives. This year the topics which were discussed were "Internet Safety and Social Networking Sites" and "Drug and Alcohol Misuse". Discussions took place in respect of these topics among the young people. Each group made a presentation of the key issues which were discussed to all members of Comhairle.

Limerick County Development Board, with the assistance of Limerick Youth Service and the Youth Officer for County Limerick VEC, decided to implement an enhanced Comhairle Programme in 2009 / 2010 and with this in mind 21 delegates were elected by their peers to a new Youth Council. The County Limerick Youth Council will meet frequently and will in turn elect 5 members to represent County Limerick at Dáil na nÓg 2010 which takes place on the 5th of March at Croke Park Conference Centre.

LIBRARY

Library Service: Highlights 2009

- Opening of new **Regional Library in Kilmallock**



Kilmallock Teenspace



Adult Study Area

- Launch of Dr. Matthew Potter's book **William Monsell of Tervoe** in Limerick Studies



William Monsell Book Launch



Limerick Studies Photo Archive

- Launch of **The Knights of Glin: seven centuries of change** edited by Tom Donovan in Limerick Studies



Tom Donovan speaking at Launch



Desmond Fitzgerald and Friends

- Significant additions to Limerick County Archives – **Monteagle Papers, Imbusch Photographic collection and Pathé Newsreels**
- **SMS Notification System** launched in all automated libraries
- **Exhibitions** by Dave Ryan, Suzanne Fox, Michael Vernon, Tom Ahern, Karen Playford and Pauline Sharpe amongst others
- **Quest Seekers Summer Reading Challenge** for children in Dooradoyle, Newcastle West and Adare
- **Seachtain na Gaeilge, Bealtaine and the GAA's 125th anniversary** celebrations
- Group visits included those by **Probus, Age Action Ireland, Butterfly Club, Ballyhoura Architectural Survey, EU Direct Intercultural Dialogue, Book Clubs and Schools**

Library Statistics

Registered Readers	19,054
Items Issued	373,975
Visitors <i>(Dooradoyle, Newcastle West, Adare, Abbeyfeale, Foynes, Rathkeale and Limerick Studies)</i>	348,267
Hours of Internet / WIFI use	42,129
Exhibitions	32
Cultural/Civic events	48
New titles added to stock	46,211

COUNTY ARTS OFFICE

The County Arts Office maps the county with a programme that promotes inclusiveness and active participation in a wide range of arts disciplines. Over four hundred young people on average are involved through this programme in any one week in a variety of art forms. Ongoing throughout the year and the county was a calendar of stimulating and entertaining activities and events that involved people in dancing, singing, drama, creative writing, classical music and appreciation of the built environment.

Arts in Our Primary Schools

Over one thousand children in eleven of the county's primary schools actively engaged in creative art activities facilitated by professional artists in the fields of music, craft, drama, visual arts, opera and dance. Forty primary schools participated in the Council's traditional music initiative 'Ceol sa Rang'. This initiative introduced children to traditional music, instruments and dance. Under the Poet in Residence programme over thirty primary schools engaged in exploring creative writing and poetry.

Arts and Our Young People

A year long programme exploring the themes of racism and migration led our young youth theatre members to making a film and devising a play. The County Limerick Youth Choir, an initiative of the Arts Office sang to great acclaim at a number of events and venues throughout the county. This youth choir comprising of young people ages 18 – 22 years draws its membership from all parts of the county. Transition groups from five post primary schools and UL PE students participated in an integrated dance programme with residents of Rathfredagh Cheshire Home and young people of the Irish Wheelchair Association. Four post primary schools participated in the poet in residence literature programme.

Éigse Michael Hartnett

The 10th Anniversary of this annual literary and arts festival was held the last week end in April in Newcastle West. A bumper programme of events featuring national and international poets, writers, musicians and performers were held through out the town. Highlights of the weekend were readings with Alice Taylor, the UK Poet Laureate Carol Ann Duffy, poet Paul Durcan and a spell binding concert with the singing group Anúna.



Anúna Performance at Éigse Michael Hartnett in Newcastle West

Limericks Built Heritage

This bi annual series of lectures explored the built heritage of Limerick from medieval times to the present day. Organised by the arts, archaeology, planning and community enterprise sections, the series of five lectures drew large audiences during the months of January to March.

Women's Voices ... Women's Stories

Was originally commissioned by the Arts Office to mark International Women's Day. This event, weaving between poetry, song and story proved so popular it resulted in a tour to five other venues in the county in November and December.

Other programmes in 2009 included ...

Wide ranging Classical Music Series, Fortnightly Poetry Readings, Arts in Health initiatives and Arts activities for mature adults, amongst others.

Human Resources

To create a working environment that encourages and supports staff in the achievement of the organisation's objectives

General

The Human Resources Department is tasked to enable, encourage and support staff in their pursuit to achieve corporate objectives and their own personal aspirations. In order to achieve this objective the Department has responsibility for the following key areas of activity within the Council;

- Staff Recruitment and Retention
- Staff Development and Training
- Staff Relations
- Work / Life Balance Initiatives
- Staff Support Services
- Pensions Administration
- Performance Management

At the end of December 2009 the Council employed 953 staff.

Life Long Learning

During 2009 the Council conducted a comprehensive training programme for its staff concentrating mainly on Health & Safety, and Fire Service initiatives.

Despite diminished resources available for training and development the Council's commitment to supporting the IPA Local Government Programmes continued in 2009.

Retirements

2009 saw the largest number of staff retire in any one year. Thirty eight staff members retired from the Council during the year. Many had given a lifetime of loyal and committed service to the Council and the citizens of the county. The Council owes a sincere debt of gratitude to these staff.

Work Life Balance Initiatives

The Council continues to offer a comprehensive range of schemes and initiatives designed to facilitate staff to balance their commitments inside and outside of work. These include - the operation of flexi time, work sharing, career breaks, term time, unpaid leave, study and exam leave, force majeure leave, adoptive leave, maternity and paternity leave, special leave etc.. 2009 also saw the introduction of two national incentivised schemes designed to reduce overall staffing numbers in the Council. They were the Incentivised Early Retirement Scheme and the Incentivised Career Break Scheme. The take up in each scheme was 5 and 10 respectively.

HR/Payroll/Superannuation System

Limerick County Council advanced the implementation of the new systems during the year. The Payroll and the Superannuation modules of the system went live during the year. In addition, the Time and Attendance module went live in a number of Departments on a pilot basis towards the end of the year. Plans to roll out the remaining modules during 2010 are well advanced.

Corporate Services

To support and enhance the democratic role of the Council and to develop, co-ordinate and promote a corporate culture and business ethos within the organisation.

The Corporate Services / General Administration sections cover a wide range of services in addition to providing Management Support Services. The sections deal with areas such as Higher Education Grants, Register of Electors, Freedom of Information, Customer Services, Purchasing and a wide variety of ancillary services relating to Council business.

GENERAL ADMINISTRATION

Register of Electors

The Register of Electors is updated and produced annually and comprises a list of all persons over the age of 18 years resident in the County who are entitled to vote in Elections to the Dáil, the European Assembly, Presidential and Local Elections and Referenda. The publication date for the Register of Electors is 1st February and the Register comes into effect on the 15th February each year. A Supplement to the Register of Electors 2009/2010 was compiled for the Local and European Elections in June 2009 and a further Supplement was compiled for the Referendum on the Lisbon Treaty in October 2009.

In 2008, the Minister for the Environment, Heritage and Local Government, Mr John Gormley, T.D., signed the County of

Limerick Local Electoral Areas Order which revised the 5 local electoral areas in the county. The 5 revised local areas were reflected in the 2009-2010 Register of Electors. The revised number of seats are outlined below. These came into effect for the Local-European Elections which were held in June 2009.

Adare	-	7 Seats
Castleconnell	-	7 Seats
Newcastle	-	5 Seats
Kilmallock	-	5 Seats
Rathkeale	-	4 Seats

In advance of the Local Elections in 2009, an Active Citizenship Event was organised in County Hall in April. This was attended by representatives of Doras Luimni, and Integrating Ireland and its aim was to raise voter awareness amongst the immigrant community.

The revised Dáil constituency boundaries will become effective for the next General Election. This will create 3 new Dáil constituencies in County Limerick where there are currently 2, Limerick East and Limerick West. The new constituencies are as follows and the number of Dáil Seats in each:

Limerick City	-	4 Seats
Limerick	-	3 Seats
Kerry North/ West Limerick	-	3 Seats

The Local Government Electorate stands at 96,478 on the Live 2009/2010 Register of Electors published in February 2009.

Adare	21,626
Castleconnell	23,132
Kilmallock	18,459
Newcastle	18,171
Rathkeale	15,090

The Dáil Electorate stands at 95,021 on the Live 2009/2010 Register of Electors as at February 2009 broken down as follows:

Limerick East	-	36,218
Limerick West	-	58,803

Members of the public can check if they are registered correctly on the Electoral Register on www.lcc.ie (Register of Electors Online Enquiries). If your details are incorrect or you are not registered, please apply for an application form to electoralregister@limerickcoco.ie

HIGHER EDUCATION GRANTS

Limerick County Council continues to administer the Higher Education Grant scheme. 456 new applications were received for the academic year 2008/2009 and in excess of 900 renewals were processed. Total expenditure amounted to over €4.1m and this includes an amount of €438,000 that was paid out as Special Rate of Maintenance Grants. A total of 156 students were awarded Special Rate of Maintenance Grants in 2008/2009.

FREEDOM OF INFORMATION (FOI)

During 2009 there were 37 FOI requests (36 valid and 1 withdrawn), 4 internal reviews and 2 appeals to the Information Commissioner.

Request outcomes 2009

- Total – 36
- Granted – 18
- Part-granted – 13
- Refused – 5

The policy of Limerick County Council is:

To give members of the public access to information held by this Authority, to the greatest extent possible, in accordance with the provisions of the Freedom of Information Acts 1997 & 2003 and consistent with the public interest and the right to privacy of the individual.

Further information and application form is available on the Councils website www.lcc.ie



INTERNAL AUDIT

The Internal Audit Section is an independent function that reviews the systems, procedures and internal controls in place throughout the Council. These reviews are carried out in order that management can have confidence in the systems and control procedures they have put in place.

The County Checker operates within the internal audit function and carries out a continuous audit of financial transactions in areas such as revenue collection, cash receipting and motor tax collection.

The Council's Audit Committee, which is comprised of three external members and two current/retired Councillors, maintains an overview of corporate governance on the organisation. A new Audit Committee was appointed in 2009 following the election of the new Council in June.

WORKPLACE PARTNERSHIP

Workplace Partnership has been ongoing throughout 2009 with progress on the Local Action Plan listed as follows:



- Handling Significant Change Forum and Work place Partnership Committee – met regularly throughout 2009.
- Projects funded by LANPAG and delivered locally included Train the Trainer programme for the Health and Safety Section and the publication of the quarterly Staff Newsletter. Return to Learning programme – There was an increased participation with courses delivered at Level 1 and Level 2. There were two educational programmes courses in Basic Computers commenced in 2009.
- 7 completed applications for the Adult Education Grant Scheme were received during 2009.
- 2009 marked the retirement of the Trade Union Joint Chair, Mr. Tom Lavery after more than 10 years involvement in the partnership process.
- The working group for Water Services – Staff Welfare Facilities met regularly and furnished an interim report on their findings.
- The remaining working groups Personal Protective Equipment and Public Private Partnership meetings held at regular intervals throughout 2009.

Planning and Development

To achieve balanced economic and social development and protection of the natural and built environment, through the proper planning and sustainable development of the County



Tom Enright
Director of Planning and
Development

The Planning Department plays a vital role in the physical, economic and social development of County Limerick. As well as its traditional roles of Development Plan preparation, Development Management, and Planning Enforcement, the Department is also involved in conservation, the preparation of Local Area Plans and works in partnership with other authorities in the development of strategic and regional plans.

The planning department's overall objective is to adopt a positive approach to balanced economic development through the proper planning and sustainable development of the County.

In this regard, the Planning and Development Department of Limerick County Council divides its resources amongst four main areas:

- Development Management;
- Forward Planning;
- Enforcement;
- Development Contributions.

The Planning Department has responsibility for implementing the provisions of the Planning & Development Acts 2000-2008 and the Planning & Development Regulations 2000-2008. This includes:

- The preparation and review of the County Development Plan/Local Area Plans and the subsequent implementation of the policies contained in these documents;
- The consideration of applications for planning permission;
- The control of development and the enforcement of planning legislation;
- Giving advice on planning matters to the public and other Council Departments.

The decline in economic activity countrywide was reflected in the continued decline in the number of planning applications received in 2009. There was a 35% decline in applications received in 2009 compared to 2008.

However, activity in other areas of planning such as enforcement, pre-planning and forward planning remained high.

Some of the highlights of 2009 included:

- New Development Contributions Scheme came into effect on 1st January 2009;
- 15 estates taken in charge during the year;
- Ongoing work on the Review of the County Development Plan;
- Continuing review and adoption of Local Area Plans - in 2009, new Local Area Plans were reviewed and adopted in respect of Adare, Askeaton, Castletroy, Croom, Fedamore, Montpelier and Patrickswell;
- Processing of 1,615 Planning applications;
- Holding of 650 pre planning meetings and reduction of waiting time to 6 days;
- Extension of the "over-the-counter" validation service from four to five days per week;
- Preparatory work for the installation of a new Planning Contribution Management System.

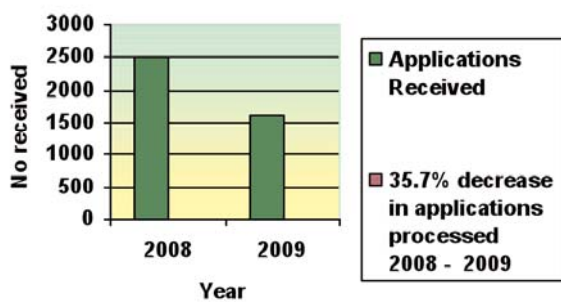
DEVELOPMENT MANAGEMENT

The Development Management Section is responsible for processing all planning applications in accordance with the Planning & Development Act 2000 -2008 and the Planning and Development Regulations 2000-2008.

During 2009 Limerick County Council's Planning Authority processed a total of 1,615 applications. This represented a 35.7% decrease in the number of applications received by the Planning Authority compared to 2008.

This mirrors the trend across other local authorities and reflects the continuing low level of construction activity in the economy.

Planning Applications 2008 - 2009



- 1,615 planning applications were received by Limerick County Council in 2009;
- 116 applications were deemed invalid in 2009 with a further 116 subsequently being deemed invalid as the site notice did not comply with regulatory requirements;
- Decisions were made in respect of 1,181 applications in 2009: 1,004 decisions to grant planning permission and 177 decisions to refuse, giving a grant rate of 85% and a refusal rate of 15%;
- 405 planning applications for individual houses and 57 applications for housing development were decided in 2009;
- Of the 405 decisions made in respect of individual houses, 78% were decisions to grant planning permission;
- Environmental Impact Statements were submitted with six applications;
- Of the 105 decisions by the Council appealed to An Bord Pleanála, 73 were upheld by the Board giving a confirmation rate of 69.5%.

CUSTOMER FOCUS

The Planning Department aims to provide an efficient, accessible, and transparent service to all our customers. The department continues to operate a number of customer-focused services and seeks to improve the services offered on an ongoing basis.

Counter Service

Planning Staff continued to provide the "over-the-counter" validation service saving valuable time for members of the public who availed of the service. In response to feedback from agents and applicants, this service has now expanded to five days per week. The "over-the-counter" validation service reduces the number of invalid applications as well as reducing costs and time delays to the applicant.

Pre-Planning

The demand for pre-planning meetings continues to be high. The reduction in the number of planning applications received has afforded the planning department the opportunity to focus on reducing the time that a prospective applicant is waiting for a preplanning meeting to occur. The average waiting time for such meetings now stands at six working days.

In 2009, 650 pre planning meetings were held to facilitate discussions with potential applicants on the issues associated with their proposals. Where appropriate, some of these meetings were held in area offices to facilitate customers.

Website

The planning website (www.lcc.ie/planning) provides a wide variety of useful information to the public in relation to planning matters. The website gives the customer the facility to check the progress of planning applications, to download documents of interest in respect of planning applications e.g. drawings, and view planning applications, zonings, etc on maps linked to the online planning enquiry system..

A fees calculator was added to the planning home page in 2009. This facility allows prospective applicants to calculate the correct fee to submit with a planning application and can be of benefit to a customer when submitting fees with a planning application.

In 2009 the Planning website received 237,643 "hits".

FORWARD PLANNING

Limerick County Development Plan Review

The statutory review of the 2005 Limerick County Development Plan commenced in February 2009. The review process takes approximately two years from commencement to completion. Pre-draft submissions were invited in February 2009. Following consultation with members of the public, stakeholders, and the elected members of Limerick County Council, a draft Limerick County Development Plan was prepared and presented to the Council for their approval in November, 2009 and subsequently the Draft County Development Plan 2010 to 2016 was placed on public display on 5th December, 2009 for a period of 10 weeks.

The draft plan sets out Limerick County Council's overall strategy for the proper planning and sustainable development of the County for the period 2010 – 2016

Variation to the County Development Plan 2005-2011

A variation to the County Development Plan was adopted in September, 2009 in order to facilitate the proposed N21 Adare by Pass.

Local Area Plans

In accordance with the Planning and Development Act 2000 – 2008 Local Area Plans must be reviewed every 6 years. The following Local Area Plans were reviewed and new plans adopted in 2009:

Adare, Askeaton, Castletroy, Croom, Fedamore, Montpelier and Patrickswell.

STRATEGIC PLANS

Limerick County Council continues to work in partnership with agencies and other local authorities to create strategic plans on a regional basis. In 2009 the following plans were progressed:

Strategic Planning, Land Use and Transportation Strategy for the Mid-West region (MWASP)

The preparation of a strategic Planning, Land Use and Transportation Strategy for the Mid-West region (MWASP) commenced in 2009. The study includes the County Councils of Limerick, North Tipperary and Clare and Limerick City Council. MWASP will provide for a comprehensive integrated Land Use Planning and Transportation plan for the Mid-West Region over the next 30 years.

Retail Strategy for the Mid West Region 2010-2016

A Retail Strategy for the Mid West Region commenced preparation in 2009 to cover the period 2010-2016. The strategy will outline policies and objectives in relation to retail development in Limerick City and Counties Limerick and Clare.

Joint Housing Strategy for the Administrative Areas of Limerick & Clare, 2009-2017

Part V of the Planning and Development Act 2000 places an onus on all Local Authorities to prepare a Housing Strategy for their areas. The Housing Strategy provides for housing for the existing and projected future populations of the development plan area in accordance with the principles of proper planning and sustainable development and aims to provide an equitable level of social and affordable housing. Limerick and Clare County Councils and Limerick City Council are currently preparing a Joint Housing Strategy for the period 2009-2017.

HERITAGE AND ARCHITECTURAL CONSERVATION

The planning department plays an active role in the areas of conservation and heritage.

Heritage

The Heritage Officer role continues to involve the integration of Strategic Environmental Assessment and appropriate assessment into the policy making functions of planning. In addition the heritage input into planning strategy documents such as Local Area Plans and County Development Plans continues. An expanding part of the heritage role is the facilitation of the preparation of Village Design Statements by local communities; an activity which leads to greater public involvement in the planning process.

Architectural Conservation

During the course of 2009 over €228,000 was awarded by the Council's Planning Department under the provisions of the Local Authority Conservation Grant Scheme. The total number of projects aided came to 29, giving an average award of in excess of €7,890 to the successful applicants. The range of buildings assisted varied from thatched houses to urban commercial premises and from country houses through to parish churches and community facilities. The level of awards ranged from €400 through to the maximum permitted of €25,000

DEVELOPMENT CONTRIBUTIONS

Section 48 of the Planning & Development Acts 2000 provides that when granting planning permission a local authority may, as a condition of that planning permission, require the payment of a contribution in respect of public infrastructure and facilities benefiting development in the area of the Planning Authority.

A New Development Contribution Scheme covering the period 2009 - 2013 was approved by the Council on the 24th of November 2008 and came into effect on the 1st of January 2009.

The Development Contribution Scheme 2009-2013 provided that the level of contributions remained the same as the existing 2003 Scheme, with the exception of the rates of contribution for 'Manufacturing Development' which are reduced by 50%.

A summary of collection and amounts outstanding on application which were granted in 2009 and which have commenced are summarised below.

Development Contribution Scheme 2003

<i>Monies Received in 2009 in accordance with Development Contribution Scheme</i>	€2,547,003.09
<i>Monies outstanding relating to applications which have commenced in 2009 in accordance with Development Contributions Scheme 2003</i>	€1,178,021
<i>Development Fund Expenditure 2009</i>	€7.86m

The projected income from development contributions was estimated at €5m for 2009.

Projects funded / Part funded from the Development Fund in 2009 included:

- Upgrade works on the Monaleen Road
- Plassey Park Road
- Lower Maiden Street, Newcastle West
- Feenagh Sewerage Scheme
- Community Sports and Cultural Grants Scheme
- Mini Pitch Programme
- Playgrounds

A full list of expenditure under the Scheme for 2009 will be available on the Planning website.



Abbeyfeale Mini Pitch

ENFORCEMENT

The level of activity in the enforcement area increased once again in 2009 with 757 complaints received. Some of this increase is due to the fallout from the downturn in the construction area, with complaints of unfinished estates and construction works as developers closed down works or were unable to meet commitments given to remedy problems associated with projects.

Limerick County Council used its enforcement powers to ensure that estates are completed in accordance with planning permission and took appropriate enforcement procedures for all unauthorised development. The table below sets out the enforcement action taken in 2009.

Complaints Received	757
Warning Letters Issued	476
Enforcement Notices Issued	461
Referred for Legal Action	42



Castleconnell Playground

Environment, Emergency Services and Consumer Affairs



Gerry Behan
Director of Environment,
Emergency Services and
Consumer Affairs

Environment

To protect, maintain and improve the natural environment and promote a sustainable built environment in County Limerick

WASTE MANAGEMENT

Regional Waste Management Office

The region published the third annual report on the Replacement Waste Management Plan for the Limerick/Clare/Kerry Region 2006-2011 in October 2009. There is a significant reduction in waste arising due to the decrease in generation of construction and demolition waste and packaging waste which is related to the economic downturn. The annual report reveals that bring banks and recycling centres are pushing up the regional household recycling rate to 30% just above the national average. Prevention awareness has further influenced waste generation with another reduction in waste arising per person to 364kgs per person. This office also processes Waste Collection Permit applications for the Limerick/Clare/Kerry Region. To date, the office has granted over 500 waste collection permits.

The Local Authority Prevention Network Project has commenced with EPA funding and projects involving waste prevention and resource conservation are underway at the following locations:

- Thomond Park
- Milford Hospice
- Killarney National Park
- The Cliffs of Moher

The annual forum in conjunction with Enterprise Ireland on the topic of 'Reducing costs through Environmental Improvement' attracted a wide variety of business and Industry in the region.

For 2009, the Green Hospitality Awards included awards for five Co. Limerick hospitality businesses.



Mary Healy-MD, Mary King-GM, Ger Lane-Catering Manager and Margaret Austin-Operations Manager of Corporate Catering Vistakon with the Green Hospitality Award pictured with James Hogan-Director Green Hospitality Award and Philippa King-Regional Waste Management Office, at the Green Hospitality Awards in February 2009, for excellence in Environmental Management.

Environmental Inspection and Monitoring Programme

Limerick County Council's Environment Section carries out an extensive programme of monitoring and inspections under 16 different pieces of environmental legislation. 187 inspections were made under Waste Regulations, 50 under Air and Noise Regulations, 430 under Water Pollution legislation and 1987 inspections were made for the purposes of sampling and auditing Drinking Water and Waste Water Treatment facilities and Surface Water quality monitoring.

In addition to this the Environment Section also deals with environmental complaints. It received 2130 complaints in 2009 compared with 2644 received in 2008. Despite staff losses and the embargo on recruiting staff, the Environment Section continued to investigate and resolve complaints in line with the Council's enforcement policy and the response times set out in its formal inspection plan (RMCEI Plan). All of the complaints were logged and acknowledged within 5 days of receipt. 2127 of the new complaints were investigated and of these 1821 were resolved, i.e. 85% of the total number of complaints received. In addition to this a further 1404 historic complaints were dealt with in 2009 and of these 715 complaints were resolved during the year.

A total of 657 enforcement procedures were undertaken on foot of the planned inspections and complaint investigations. Prosecutions were initiated in 57 cases during the year.

Radisson BLU Hotel Limerick	Limerick/Clare	Silver
Carlton Castletroy Park Hotel	Limerick	Silver
Fitzgeralds Woodlands House Hotel	Limerick	Silver
Corporate Catering Vistakon	Limerick	GH Award
Sodexo Limerick	Limerick	GH Award

ENVIRONMENT LABORATORY

The Environment Laboratory monitored the following in 2009: Public and Group Water Supplies; Urban Waste Water Treatment Plants; Rivers and Lake quality and Bathing water quality. This work was undertaken to comply with national legislation in terms of drinking water quality and in order to comply with legislation and EPA licensing requirements for waste water discharges.

In total in 2009, 40,125 tests were carried out and assessed.



Efficiency and Effectiveness

The laboratory continued to work closely with Water Services Section to refocus their work to address the needs/concerns of our customers and to comply with the drinking water regulatory requirements and the guidance of the Environmental Protection Agency for drinking water quality.

This efficiency and effectiveness drive in the laboratory saw major revisions to the working day on a voluntary basis, in order to optimise equipment usage. Budgets were cut by 10%. Increased automation and new technology allowed Limerick County Council to better meet its regulatory obligations, better protect the health of the public through water supply monitoring and better assist in protecting the aquatic environment.

The laboratory is involved in providing analytical data on the Limerick County Council web site to allow the public to access any data on drinking water quality. This project will continue and grow throughout 2010.

SHANNON INTERNATIONAL RIVER BASIN DISTRICT (IRBD)

Limerick County Council is the Co-ordinating Local Authority for the Shannon IRBD, as set out under the EC (Water Policy) Regulations, 2003 (SI 722 of 2003) which transposes the Water Framework Directive into Irish legislation and sets a new approach in relation to water management.

During 2009 the draft River Basin Management Plan (RBMP) for the Shannon IRBD (called "water matters – Help us plan!") was open for public consultation for a six month period until 22nd June 2009. In addition a number of public information events

were held during April and May to raise awareness and invite comment. Work on finalising the Plan taking account of issues raised during the consultation period was undertaken during the second part of the year.

The Shannon IRBD Advisory Council, made up of elected members from each of the 18 local authorities in the IRBD, and sectoral interest groups, such as farming, business, recreational and environmental NGOs, had two meetings during 2009.

LITTER MANAGEMENT

The Council's Litter Management team continued to tackle the serious threat to the environment posed by illegal dumping, fly tipping, unauthorised signage, etc through a combination of enforcement and awareness measures.

- A total of 1,726 complaints were investigated.
- Over 200 on-the-spot fines were issued to offenders.
- Legal proceedings were initiated under the Litter Pollution Acts in 6 cases.
- Clean-up works were undertaken at litter "Black Spots" and "No Dumping" signs were erected at sites prone to littering.
- National Spring Clean month was promoted and assistance (bags, gloves, litter pickers) was given to schools, residents' associations, community groups, etc. Over 2000 volunteers participated in 150 clean-up events throughout the County during the month of April.
- Waste collected during the campaign was disposed / recycled.
- Anti-litter awareness materials including car litter bags, pooper scoopers, re-usable shoppers, key rings, etc were distributed free by Environment Section staff at community events and agricultural shows.
- Staff participated in the third phase of the Gum Litter Task Force (GLT) National Awareness Campaign.
- A total of 6 County Limerick schools were awarded their first Green Flag and 19 schools renewed their flags at the An Taisce Green Schools Awards Ceremony in Cork.



Litter Bus

A specially designed 'Litter Bus' bearing a huge "Keep County Limerick Clean" message travelled to various towns and villages throughout the County in October, 2009.



New Fire Fighter Recruits appointed to Limerick County Council in 2009

FIRE SERVICE

Limerick County Fire and Rescue Service was accredited to the new international standard ISO9001:2008 for the Quality of its standard of Service Delivery. Over 1,000 individuals and organizations were surveyed as part of the process and the survey reported that the Fire and Rescue service enjoys the respect and appreciation of the general public and organizations that directly interface with the service and is considered a value for money service.

The major developments in the Fire Service in 2009 included:

Approval was received from the Department of the Environment, Heritage and Local Government to build 2 new water tankers. The service received delivery of a new fire appliance which cost €280,000 and is based in Rathkeale. Also the new Emergency Tender and Aerial Ladder Platform were put into operational use after fire fighters received the necessary training.

The Rathkeale Fire Station was extended to house the new aerial ladder platform. A preliminary design for costing was prepared for Cappamore Fire Station. Work commenced on building of the new fire station in Kilmallock.

11 fire fighters were recruited and trained to increase the staff complement in fire stations from 11 to 12. Fire fighters and officers were trained in 60 training courses during 2009 and the new national incident command system was implemented in County Limerick after fire fighters and officers received the necessary training.

The fire service trained 37 Limerick County Council staff on the new major emergency framework and the fit-out of the Local Co-Ordination Centre and Crisis Management Centre was completed.

VETERINARY SERVICES

The Veterinary Service is responsible for delivering Food Safety regulatory controls, in accordance with the terms of the contract between the Council and the Food Safety Authority of Ireland, in various meat processing establishments located within the county. During the year 1833 Cattle, 5282 Sheep, 196 Pigs and 1027 Horses were slaughtered in eleven abattoirs; each animal was inspected by a veterinarian pre and post slaughter. An important aspect of our work is to ensure that animal welfare rules within the abattoirs are fully complied with.

Our Dog Wardens continued to address the issue of stray and unwanted dogs during the year. They cover both Limerick county and city. A total of 752 Dogs were handled at our Shelter in Mungret. We succeeded in finding new homes for 144 dogs. We are continually seeking to re-home many beautiful dogs whose owners, for various reasons, can no longer care for them. Please check our website www.lcc.ie or telephone the shelter at 061-301604 if you think you might be interested.

The stray horse problem escalated alarmingly during 2009, particularly in the last quarter. A total of 134 strays were seized and impounded; this compares with 53 horses in 2008. A sharp decline in the market for all types of horses combined with a serious shortage of winter fodder gave rise to many horses not being adequately cared for with some being simply abandoned.

CIVIL DEFENCE

Limerick County Civil Defence had a very active year. Training continued throughout the County while Civil Defence personnel participated in Operational activities / Training Exercises and also provided numerous types of assistance to their local Communities.

Training Events Included:

Participation in National Exercise in Kilworth Camp, Co. Cork; Avian Flu Training – Mallow; Ex Clew Bay – (Boat Exercise Co. Mayo); Annual Training Camp Lisdoonvarna/Lahinch Camp, Co. Clare and Rescue Skills Weekend – Annacotty/Bruff



Students undergoing Power Boat Exam

Training Locations

First Aid, Auxiliary Fire Service (AFS), Rescue and Communication classes were carried out in the following locations:

Annacotty (Occupational First Aid, Rescue, Comms and AFS), Kilmallock (Occupational First Aid), Askeaton (Occupational First Aid), Rathkeale (Kayaking)
Doon (Occupational First Aid and AFS), and Killaloe (Boating)

Courses

- **Local** - Members completed courses and received certification in Occupational First Aid, Cardiac First Response, Power Boating and Coastal Navigation.
- **Civil Defence College** - Members attended courses and received certification in Rescue (Rope Rescue Instructor) and Casualty (Emergency Medical Technician).

Recruitment

Thirty six Recruits successfully completed their induction training and received certification in Occupational First Aid.

Community Events / Operations

Civil Defence provided assistance at numerous Local, National and International events including:

Searches for missing Persons
Ras Luimini Cycle Race
Assistance to HSE during Big Freeze
St Patrick's Parade Newcastle West
Flooding of nursing home Nenagh
Clonshire Equestrian Centre - Hunter Trials
Lough Gur Summer Festival
Milford Harvest Fair
Cappamore Agricultural Show
Dawn Mass Ard Patrick
Limerick Women's Mini Marathon
Manistar Spring Fair
Chernobyl Children Project
Athea Horse and Pony Races
Launch Special Olympics UL
Limerick Diocesan Pilgrimage
Crecora Show
River Festival Limerick
Ballingarry Charity Run
International Badminton Tournament – UL
Ballyhoura spook Cycle Race
Doon Vintage Show
Mary of Murroe Festival
Worlds End Triathlon Castleconnell
Desmond Cup Final Askeaton
Co Limerick VEC Sports Day

CORPORATE PROJECTS

- Kilmallock Area Office, Library and Courthouse Project, was completed in 2009. The Library and Area Office were officially opened in November and the Courthouse had its first sitting in September 2009.
- Construction commenced on the 3 Bay Fire Station in Kilmallock in November 2009.
- 2009 also saw the commencement of the design process for a new 3 Bay Fire Station in Cappamore to replace the existing 2 bay station there.

Finance, Information Systems and Motor Taxation



Oliver Killeen
Head of Finance and
Information Systems

FINANCE: *To provide relevant, timely and accurate financial information to assist in the making of informed decisions*

BALANCE SHEET AS AT 31ST DECEMBER 2009

	2009 €	2008 €
Fixed		
Operational	372,184,803	348,936,220
Infrastructural	1,941,096,295	1,947,663,380
Community	552,748	552,748
Non-Operational	14,728,233	11,461,336
	2,328,562,079	2,308,613,684
Work-in-Progress and Preliminary Expenses	480,420,274	403,907,357
Long Term Debtors	27,898,943	28,277,271
Current Assets		
Stock	255,079	301,641
Trade Debtors and Prepayments	19,060,678	22,816,496
Bank Investments	8,992,305	24,793,660
Cash at Bank	4,540,815	2,518,273
Cash in Transit	14,426	14,426
	32,863,303	50,444,496
Current Liabilities		
Creditors & Accruals	27,365,044	31,311,828
Urban Account	-	-
Finance Leases	355,089	437,808
	27,720,133	31,749,636
Net Current Assets / (Liabilities)	5,143,170	18,694,860
Creditors (Amounts greater than one year)		
Loans Payable	65,759,912	68,940,766
Finance Leases	502,975	802,888
Refundable Deposits	1,496,405	1,366,874
Other	-	-
	67,759,292	71,110,528
Net Assets / (Liabilities)	2,774,265,174	2,688,382,644
Financed By		
Capitalisation Account	2,328,562,080	2,308,613,684
Income WIP	474,601,142	395,073,160
Specific Revenue Reserve	384,904	384,904
General Revenue Reserve	81,220	70,449
Other Balances	(29,364,171)	(15,759,554)
Total Reserves	2,774,265,175	2,688,382,643

Prompt Payment of Accounts Interest – Total paid - €9,501.24

INCOME AND EXPENDITURE ACCOUNT STATEMENT

FOR YEAR ENDED 31st DECEMBER 2009

The Income and Expenditure Account Statement brings together all the revenue related income and expenditure. It shows the surplus/(deficit) for the year.

Expenditure by Division	Gross Expenditure 2009 €	Income 2009 €	Net Expenditure 2009 €	Net Expenditure 2008 €
Housing and building	10,026,360	9,747,443	278,917	1,166,880
Road transport & safety	25,204,271	15,715,110	9,489,160	10,605,681
Water services	21,006,932	10,099,489	10,907,443	10,784,604
Development management	7,717,461	2,133,223	5,584,238	5,023,068
Environmental services	20,135,809	13,578,144	6,557,665	10,763,447
Recreation and amenity	6,262,481	481,098	5,781,383	6,246,318
Agriculture, education, health & welfare	10,509,953	9,735,282	774,671	920,491
Miscellaneous services	8,807,254	3,928,768	4,878,486	5,484,227
Central management charges	-	-	-	-
Total Expenditure/Income	109,670,520	65,418,556		
Net Cost of Divisions to be funded from Rates and Local Government Fund			44,251,964	50,994,716
Pension related deduction			1,453,627	-
Local government fund			23,410,829	27,483,240
Commercial rates			26,570,796	26,811,171
Surplus/(Deficit) for Year before			7,183,288	3,299,696
Transfers from/(to) Reserves			(7,172,517)	(4,368,175)
Overall Surplus/(Deficit) for Year			10,771	(1,068,479)
General Reserve at 1st January			70,449	1,138,928
General Reserve at 31st December			81,220	70,449

SUMMARY OF CAPITAL EXPENDITURE AND INCOME

	2009	2008
	€	€
Expenditure (Net of Internal Transfers)*		
Housing & Building	20,433,791	20,572,463
Road Transportation & Safety	78,809,937	107,125,667
Water Supply & Sewerage	14,615,450	16,727,910
Development Incentives & Control	3,855,214	37,940,274
Environmental Protection	1,850,934	4,867,359
Recreation & Amenity	1,068,835	3,287,738
Agriculture, Education, Health & Welfare	-	-
Miscellaneous	6,066,526	4,197,755
	126,700,687	194,719,166
Income (Net of Internal Transfers)*		
Housing & Building	17,428,102	26,733,412
Road Transportation & Safety	75,009,732	98,426,943
Water Supply & Sewerage	7,812,820	19,357,047
Development Incentives & Control	4,153,187	43,134,460
Environmental Protection	1,738,134	1,663,219
Recreation & Amenity	189,472	47,500
Agriculture, Education, Health & Welfare	-	-
Miscellaneous	2,830,300	2,345,201
	109,161,747	191,707,783
Surplus/(Deficit) for year	(17,538,940)	(3,011,383)
Balance (Debit)/Credit @ 1st January	29,267,920	32,279,303
Balance (Debit)/Credit @ 31 December	11,728,979	29,267,920

* Excludes internal transfers, includes transfers to and from Revenue account

Information Systems

To maintain and progress a secure and reliable infrastructure of Information and Communications systems which will facilitate the management and operation of Limerick County Council

During 2009 the Information Systems section continued to support sections in achieving their objectives. Some of the main areas of activity were:

Virtualisation

During the year the I.S. continued to Virtualise Servers. Server virtualization allows the conversion of one physical server into many virtual Servers. There are many benefits achieved from Server Virtualisation, some of the main benefits are :-

- **Server consolidation:** The most often talked about benefit of virtualization. If applications running on separate computers do not utilize the computing resources of their computers, they can be consolidated onto a smaller number of servers using virtualization technology. It is estimated that distributed physical servers generally use only 20 percent of their capacity, and that by virtualizing those server environments, enterprises can boost hardware utilization to between 60 percent and 80 percent. In Limerick County Council it is expected to reduce the number of servers from 30 to 5, by the end of 2010.
- **Smaller footprint:** Virtualizing servers decreases the number of physical boxes that a company must use. This means a smaller datacenter, with the resulting decreases in cooling and electrical costs.
- **Hardware costs:** Because virtualization allows for greater utilization of existing resources, fewer physical servers are required, saving money both on upfront hardware costs and on maintenance costs.
- **Disaster Recovery\Business Continuity:** Virtualisation simplifies the introduction of Disaster Recovery and Business Continuity plans.

A trial of Virtual Desktops and Thin Clients commenced during 2009. These use similar technology to Virtual Servers and are used to replace the standard desktop P.C.

Several Virtual Desktops are created on a physical Server, these Virtual Desktops are then accessed using Thin Clients. The use of Virtual Desktop and Thin Clients have many benefits for deployment, management, and maintenance of desktops, and also reduce carbon footprint and save in power costs.

Storage Area Network

Limerick County Council purchased two Storage Area Networks (SAN's) during 2009. A SAN is a data storage and management architecture that provide a secure data storage infrastructure that can be centrally managed.

The centralisation of data storage simplifies the management and data. It is proposed to locate one SAN in County Hall, and the other in Lissanalta house, and implement data replication between the two SANs during 2010.

Open Source Software

Open Source software is software that is given away freely. But more than that, the source code to the software is also given away. That means not only that anyone can use the software, but anyone can see exactly how it works. And even more, anyone can take that software, change it, and redistribute it.

A trial of Open Source Software, Open Office was carried out during 2009, Open Office could replace Microsoft Office for some users, this would reduce software costs substantially in the future. It is proposed to test Server Open Source Software during 2010.

System Centre Configuration Manager

System Centre Configuration Manager is a systems management software product for managing large groups of Windows-based computer systems, and was installed in Limerick County Council during 2009.

Configuration Manager provides remote control, patch management, software distribution, operating system deployment, network access protection, and hardware and software inventory. SCCM allows a single or small group of system administrators to control all new software installation, security patch management, new operating system deployment and electronic computer inventory tracking from one central server.

Helpdesk\Systems Support

The I.S. section continued to provide a user Helpdesk during 2009, and supported and maintained end-user systems, including WEB sites throughout 2009.

Motor Taxation

Limerick County Motor Taxation Office is located in Lissanalta House, Dooradoyle, Co. Limerick. The building is situated 800 yards from County Hall and is accessible from all major routes into the city. There are 35 parking spaces available to the public. Opening hours are between the hours of 9.30 a.m. and 3.30 p.m. daily, including lunchtime.

Role of the Motor Tax Office

The Motor Taxation Section of Limerick County Council is responsible for a wide range of activities and services such as:

- Issuing of Vehicle Licences
- Issuing of Driving Licences
- Recording of Driving Licence Endorsements and Disqualifications
- Processing of Pre-January 1993 changes of vehicle ownership
- Issuing of Certificates of Roadworthiness for Heavy and Light Goods Vehicles.
- Issuing of Trade Plates to Motor Traders

There are now a number of options available to the general public to tax their vehicles:

- Tax on-line at www.motortax.ie. All you need to do this is a credit card or laser card, your motor insurance details, your PIN as supplied by the VRU in Shannon on your renewal notification. The Motor Tax classifications which are eligible to avail of the online service are: Private Cars, Agricultural Tractors, Excavators, Motor Cycles, Exempt (Disabled Drivers), Vintage/Veteran and Motor Caravans and first time taxing of new or imported vehicles.
- Through the post to Motor Taxation, Lissanalta House, Dooradoyle, Co. Limerick.
- At our Area Office located in Áras William Smith O'Brien, Newcastle West, Co. Limerick
- At our Headquarters located at Lissanalta House, Dooradoyle, Co. Limerick.

Availability of Motor Tax Online at Kilmallock Area Office

On the 23rd November 2009, Áras Mainchín Seoighe, Kilmallock, officially opened its doors to the public. The Kilmallock Area Office provides the public with an opportunity to tax their car online with the provision of a Motor Tax Kiosk. The kiosk provides a touch screen facility which allows the user to tax their car in six easy steps. The tax disc will be sent to the customer within four working days.





AREA OFFICE DEVELOPMENT

Adare/Castleconnell	55
Kilmallock	57
Newcastle West	59
Rathkeale	61

ADARE/CASTLECONNELL

Adare

Following the implementation of the County of Limerick Local Electoral Areas Order which revised the five local electoral areas in the county - the former Bruff Area has been renamed the Adare Electoral Area. A new Electoral Area Committee was elected in June and the Chairman is Councillor Richard Butler, who will hold the office for the first year of the Committee's five years. Eleven Committee Meetings were held and items discussed included the following:

- Ballykeeffe Neighbourhood Park, Traffic Calming and Management, Speed Limits;
- Adare and Bruff GAA and Bruff Camogie clubs were presented with Certificates to mark their achievements;
- Mungret GAA, made a presentation to the Committee in November.

Croom Area Office serves Adare Electoral Area for the purposes of Roads maintenance. It is possible to make payments for local authority services and also to the Revenue Collector at the Croom Office.

Adare Roads (Non-National) Budget for 2009 was €1,866,704, representing a reduction of 29% on 2008 figures, and again the challenge was to maintain a good service with reduced staffing and funds. Some of the major activities throughout the year were:

- Regional Road Reconstruction, 5,544 m² costing €116,724;
- Regional Road Surface Dressing, 18,800 m² costing €70,621;
- Local Roads Reconstruction, 21,870 m², costing €438,292;
- Local Roads Surface Dressing, 37,268 m², costing €254,064
- Local Roads Discretionary Improvements, (drainage) costing €34,056;
- Low Cost Safety Scheme at Ballygrennan Cross.

During 2009, the N20 was reclassified as the M20 – a Motorway. The Motorway status represents new challenges for the Croom and Annacotty Area Offices, under the heading of Health and Safety in particular. Assistance was given to the Adare Tidy Towns team, who were successful in achieving a Silver Medal in the Competition. A number of Housing Estates were taken over during the year including the following:

- Huntsfield, Dooradoyle;
- Oakfield, Fr. Russell Road;
- Church Hill Meadows, Raheen;
- May Park, Ballykeeffe.



Footpaths and 'Flight of the Earls' Mural in Bruff



Picturesque Croom

Castleconnell

The Castleconnell Area Committee has seven Members, and the Chairperson for the first year of the Committee's lifetime, (5 years), is Councillor Brigid Teefy. Six Meetings were held and items discussed included the following:

- Speed Limits, Extinguishment of Rights of Way, Road Repairs and Traffic Calming.
- Presentations were made by the Garda Superintendents of the area, Make a Wish Foundation and Aisling Annacotty AFC.

Castleconnell Electoral Area is attended to by the Annacotty Area Office delivering the services of:

- Housing – Maintenance and Pre-Letting Repairs;
- Housing Grants – Housing Aid for Older People, Housing Adaptation Grant for People With a Disability and Mobility Aids Grant;
- Water Services – Maintenance, Connections and Management;
- Burial Ground Maintenance and Improvements;
- Roads Services – Maintenance and Management;
- Taking in Charge of Estates - The Orchard, (Phase II), Roskeen, both in Castletroy;
- Playgrounds at Castletroy and Cappamore.

2009 has been a challenging year due to the economic downturn - with reductions in Budgets and the staffing complement.

November/December with its severe weather conditions, saw Annacotty Area Office on emergency response following the flooding of Castleconnell village, Mount Shannon and Montpelier. County Hall's Emergency Response Team, and Annacotty Area Office worked closely with other agencies in flood alleviation. Personnel from the Croom Office also assisted. Activities involved included:-

- Sandbagging – approximately 15,000 sandbags were used and 22,000 tonnes of sand;
- Relocating - assistance was given to persons to secure their property/homes and to relocate,
- 24 hour service provided for a period - at a critical time – with emergency line open for support and advice, requests for sand bags, assistance and Traffic Management;
- Castletroy Wastewater Treatment Plant - the integrity of the plant was a major concern and efforts were successful in ensuring no major flood damage was caused.
- Risk Identification – dangerous areas - because of flooding were identified and closed, i.e. Castleconnell and Plassey Park Pedestrian Bridges;
- Scanlon Park Estate – temporary pedestrian access was put in place for residents.

During the cold spell Annacotty Roads Team salted roads, cleared snow and ice and the Water Services Team attended to frozen water supply networks and burst pipes.

ROADS SERVICES

Activities throughout the year included:

- Regional Road Reconstruction, 5,000m² costing €150,000;
- Regional Road Surface Dressing, 36,700m² costing €137,353;
- Regional Road Specific Improvement costing €665,000 for R512 Friarstown and R503 Drominboy;
- Regional Road Discretionary Improvement, €18,000, (footpaths and drainage);
- Local Roads Reconstruction, 55,500m², costing €1,038,000;
- Local Roads Surface Dressing, 33,600m², costing €536,648;
- Local Roads Discretionary Improvements, footpaths and drainage, costing €53,552;
- Development Funds of €3m were allocated for Monaleen road project.

HOUSING AND WATER SERVICES

The main focus of the Housing Team was the maintenance of existing stock, preparation of vacant and purchased houses for tenanting, and some home improvements to address mobility and disability issues.

Cappamore and Doon, Wastewater Treatment Plants were upgraded in 2009, with EPA Licences obtained for their management and operation. Work continues on the upgrade of Castletroy Waste Water Treatment Plant to comply with regulations and EPA Licence.

The prudent use of water is a major concern for the Water Services team, who work closely with the Water Conservation Unit in this regard.

Grave Yard Improvements focused on development of further sections of Burial Grounds in Castlemungret and Doon.

Payments for Local Authority services can also be made in the Annacotty Office and there are also facilities to make other types of payments on line.



Flooding in Castleconnell



The Big Freeze - Pallasgrean

KILMALLOCK



NEW OFFICES/LIBRARY

Áras Mainchín Seoighe - Kilmallock Area Office and Library – was officially opened on 23rd November 2009.
(Picture courtesy of Christian Richter)

KILMALLOCK AREA

In the June Local Elections five new Councillors were elected for the Kilmallock area.

During the year Kilmallock Area Committee held eight meetings and Councillor Michael Houlihan is the Chairperson for the first year. The Committee received a delegation from Hospital Community Council at its November meeting.

HOUSING

During 2009, Kilmallock offices took over the maintenance of two new estates, Radharc Killeen, Kilfinane, and Brugh na nDeise, Bruff.

Energy Efficiency works were carried out on houses which became vacant after 1st January 2009.

Five rural cottages were refurbished under the Refurbishment of Rural Dwellings Scheme by Kilmallock Housing staff. Works were carried out on six Council houses by direct labour under the Housing Adaptation Scheme for County Council Houses.

WATER SERVICES

Funding was provided in 2009 under the Small Capital Schemes programme for the laying of a watermain between the Kilmallock and Garrienderk Water Schemes. Garrienderk had been formerly supplied from County Cork by the Charleville scheme.

Walls were repaired at Castletown and Shanavoha burial grounds. Footpaths were laid at Effin burial ground to facilitate access to a newly developed section.

ROADS

In the Kilmallock Roads Area the following works were carried out.

- Regional Road Reconstruction - 6,906m² at a cost of €145,035.
- Regional Road Surface Dressing - 31,185m² at a cost of €116,944.
- Regional Road Specific Improvement - €160,000 (Widening and reconstruction of a narrow section of the R663 Garryspillane to Galbally road).
- Regional Road Discretionary Improvement-€36,626 (footpaths and drainage).
- Local Roads Reconstruction - 65,314m² at a cost of €1,240,970.
- Local Roads Surface Dressing - 151,966m² at a cost of €486,291.
- Local Roads Discretionary Improvements - €46,922 (footpaths and drainage).

In addition a sum of €56,000 was allocated for Regional Road signposting on the R512 and R513 and signage was erected to promote cycle routes in conjunction with Ballyhoura Development.



R662 GARRYSPELLANE GALBALLY ROAD WIDENING

KILMALLOCK TOWN WALLS



Before and After

In 2009 two grants were received through the Irish Walled Towns Network (IWTN). The first, for vegetation control, concentrated on the east town wall. The second grant was to consolidate a 20m section of wall behind the car-park/children's playground off Sarsfield Street. Current best practice consolidates what is still standing rather than rebuilding missing elements, but in this instance the inner face of the wall had a significant overhang at its upper surviving levels, so it was decided to replace the interior face to the level of the overhang. The rebuilt face was recessed 50mm behind the original face to aid future identification as a later rebuilding. Above the overhang the core and the top of the wall have been weatherproofed by applying lime mortar. The outside of the wall has been cleaned and repointed. Further works were undertaken outside to replace a foundation course on the outer face over a 30m length.

The Kilmallock Local Action Team is very grateful to the IWTN for funding these two projects and to the householders who allowed us access. This is the beginning of a long journey to consolidate Kilmallock's wall for the next millenium.

NEWCASTLE WEST

Newcastle West Area Office provides a wide range of services which include Road Maintenance, Housing, Sanitary Services, Planning Clinics, Motor Tax Facilities and the operation of the Machinery Yard and Ballingrane Bitumen Depot.

ROADS

Expenditure on maintenance and improvement works in Newcastle West Roads Area in 2009 was financed by way of Government Grants, and the Council's own resources, with a total expenditure of approximately €3.8 million for the year. Works included road surface overlays, road strengthening, bridge repairs, upgrading of footpaths and general maintenance, including the following:

- Major road surface overlay on the N.21 at Templeglantine
- Road overlays at Tournafulla School and Killeline, Newcastle West
- Bridge widening at Ballintubrid, Newcastle West
- Junction safety improvements at Devon Cross
- Footpath upgrading at Newcastle West, and Tournafulla
- Local Improvement Schemes
- Informal pedestrian crossing and disability parking bays in Abbeyfeale
- Surface water drainage scheme at Cullinagh
- Road repairs including landslide remediation following 2008 flooding

Flooding in Athea

In September 2009, the village of Athea was subjected to serious flooding following heavy rains. Unfortunately, tree prunings had washed down a local stream and blocked a culvert across the main street, causing flooding to a number of houses.



Flooding in Athea

Flood Remediation in Newcastle West

During 2009, the Office of Public Works constructed a flood barrier at Rathina consisting of a reinforced culvert wall faced with natural stone. Due to river levels, work was discontinued in early December, but the Office of Public Works are due to return in 2010 to complete the project as far as Courtenay Bridge. A flood alarm system was also installed at North Quay, consisting of a siren, which will activate when the river reaches a specific level.

IBAL Anti-Litter League 2009

Newcastle West was selected by IBAL (Irish Business Against Litter) as one of 60 towns/cities throughout Ireland to take part in a National Litter Survey during 2009. To promote anti-litter in Newcastle West, a local Working Group was set up comprising representatives of County Council, Tidy Towns, Community Council, Schools, Garda Síochána, Newcastle West Chamber of Commerce, Newcastle West Business Association, and West Limerick Resources, chaired by Councillor Michael Collins. The group concentrated on an awareness campaign, and also organised several litter picks around the town. There was considerable satisfaction therefore when Newcastle West was adjudged to be 18th tidiest of the 60 towns, and deemed to be "Clean to European Norms".

HOUSING

Rural Remedial Works Scheme

Works were carried out on 6 No. Rural Cottages during 2009 at a cost of €225,000.

The following is a break down of the works carried out:

- Replacement of Windows and Doors
- Insulation
- New Kitchens (where applicable)
- Flooring
- Wiring
- Surfacing Driveway
- Fencing/Landscaping

Housing Disability Grant Scheme

48 No. applications were approved in 2009 at a cost of €318,000.

Graveyard Improvements

- €25,000 spent on drainage works and footpaths at Reilig Ide Naofa, Abbeyfeale.
- New Stone Wall and Entrance constructed at Calvary Graveyard, Newcastle West. The Local Graveyard Committee carried out this project with technical assistance from Limerick County Council.



New Stone Wall and Entrance constructed at Calvary Graveyard, Newcastle West

WATER SERVICES

Abbeyfeale Surface Water Scheme, Killarney Road, was completed May 2009, at a cost of €700,000.

Severe Weather December 2009

There were water restrictions in place in Abbeyfeale during the latter part of December, 2009, due to severe weather. This led to tankering water to Mouncollins, Tournafulla and Athea. The water service crew worked from St. Stephen's Day well into the New Year in adverse weather conditions to restore the supply and minimise the effects on the general public.

MACHINERY YARD 2009

Over the past five years, the Machinery Section has built up a very modern fleet that effectively services the Road Works Programme and other services.

In 2009, a new phase of the upgrading programme was due to commence but this had to be put on hold due to the economic downturn.

The section lost 25% of its staff which was very significant.

BALLINGRANE BITUMEN DEPOT

The Bitumen Depot in Ballingrane plays a central role in the Roads Works Programme as distribution of bitumen is done centrally. The output in 2009 was down approximately 33% on the 2008 figures due to cut backs. This output was reduced from 1,095,950 gallons in 2008 to 740,250 gallons in 2009.

MOTOR TAXATION SECTION

The Motor Taxation Section in Newcastle West held its own despite the downturn. Takings for 2009 were €6.4 million approximately the same as the 2008 takings but the number of transactions increased by 3,000 on the 2008 transactions.

RATHKEALE

The Rathkeale Office provides a range of engineering and administrative services to the Rathkeale Area, that includes road improvement and maintenance, water and waste-water services, housing and customer services.

Area Committee Meetings

The Committee held 9 meetings during 2009, with meetings taking place generally in the Council Offices, Rathkeale, and County Hall, Dooradoyle. The present Chairperson of the Area Committee is Councillor John Sheahan.

ROADS

Substantial improvement works were undertaken during the year to the Area roads network, with expenditure in excess of €4.1m. These works included road strengthening, surface dressing, macadam overlays, roadway lining, new and replacement signage, road drainage and general road maintenance. Extensive salting of roads was carried out during the winter months, particularly to the National Roads, N21 and N69, as well as the major Regional roads in the area.

Road strengthening and improvement works were completed on various Local Primary and Secondary roads during the year. Surface dressing works were completed on many Regional and Local roads as well during the year. A number of Local Improvement Schemes were completed on minor County roads. A major re-design and re-alignment of the access road to Glin Pier was completed, and new public lighting installed.

Structural improvement works were completed during the year to Ballysteen Pier, including re-pointing the quay walls, replacement of ships bollards and resurfacing.

HOUSING

The Council housing section carries out maintenance and improvement works to its stock of houses as well as maintenance works to the Council burial grounds and Libraries in the area.

A budget of approx €313,000 was allocated in 2009 for the maintenance of, and improvements to the Rathkeale Area's existing housing stock, and Residential Caravan site. The housing section also manages the construction of new houses as well as purchasing existing houses for Council tenants.

The Council also processes the various new Housing Aid Grants, ie Housing Adaptation Grant Scheme for People with a Disability; Housing Aid for Older People Scheme; and the Mobility Aids Grant Scheme.

WATER SERVICES

The Council operates and maintains numerous water and waste-water schemes throughout the area. Included in this is the Shannon Estuary Water Supply Scheme, which is the County's largest water supply scheme, producing in excess of 4 million gallons of potable water per day. This plant supplies water to the Aughinish Alumina Plant as well as the surrounding hinterland and operates to ISO Standard. The Council took in charge the new waste water treatment plants at Fedamore and Pallaskenry during the year. An overall budget of approx €2.0m was allocated to the operation and maintenance of these schemes in 2009.

BURIAL GROUNDS

The Council carries out maintenance and some improvement works to Burial Grounds in the Rathkeale area – significant improvement works were completed during the year to St. Joseph's Burial Ground, Rathkeale, and environmental improvement works completed at St. Nicholas's Burial Ground in Adare. These works included the removal of a number of dangerous trees and the cutting back of large overhanging branches from trees in adjoining lands as well as path repairs.

ENVIRONMENTAL SERVICES

Recycling facilities are located in the following towns and villages:

- Askeaton – Arena Car Park
- Ballingarry
- Foynes
- Loghill
- Pallaskenry – Copsewood College
- Rathkeale – New Line
- Shanagolden.

Facilities include the re-cycling of glass, bottles and jars, food and drink cans. Additionally some of these centres provided facilities for re-cycling of plastic bottles, newspapers and magazines. The Council undertakes street cleaning works at many towns and villages, with the use of a mechanical suction sweeper as well as manual cleaning. Major clean-ups are organised on a regular basis.

LIFEGUARD SERVICE

Temporary lifeguards and pier attendants were employed at both Glin and Killeary Piers during the 2009 summer bathing period.

PLAYGROUNDS AND PLAYING PITCHES

The Council are actively encouraging and financing the development of playgrounds and pitches throughout the County. In the Rathkeale area a new playground was operational in Askeaton, located adjacent to the swimming pool and another community playground was opened in Glin. A new all weather mini-pitch was constructed in Rathkeale town near Abbeycourt.

ARTS CENTRE

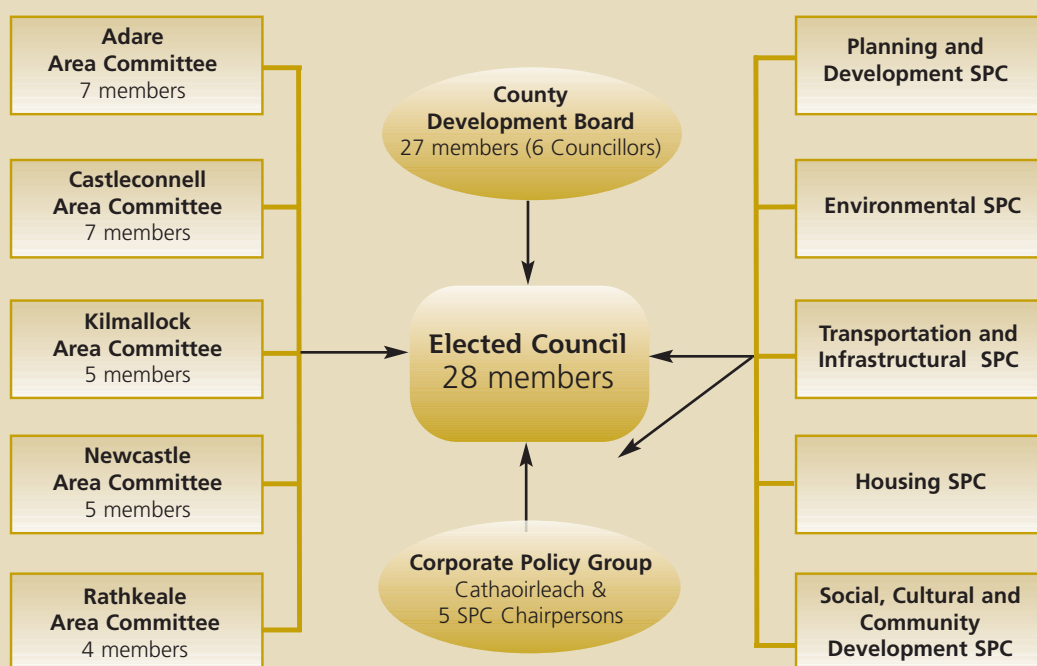
A new Arts Centre has been opened as part of the newly refurbished Rathkeale Area Headquarters, at "Áras Seán Finn", New Line Road, Rathkeale. This venue hosted many and varied arts related events during the year, including drama, painting exhibitions, music, etc. These events are booked and overseen by the Council Arts



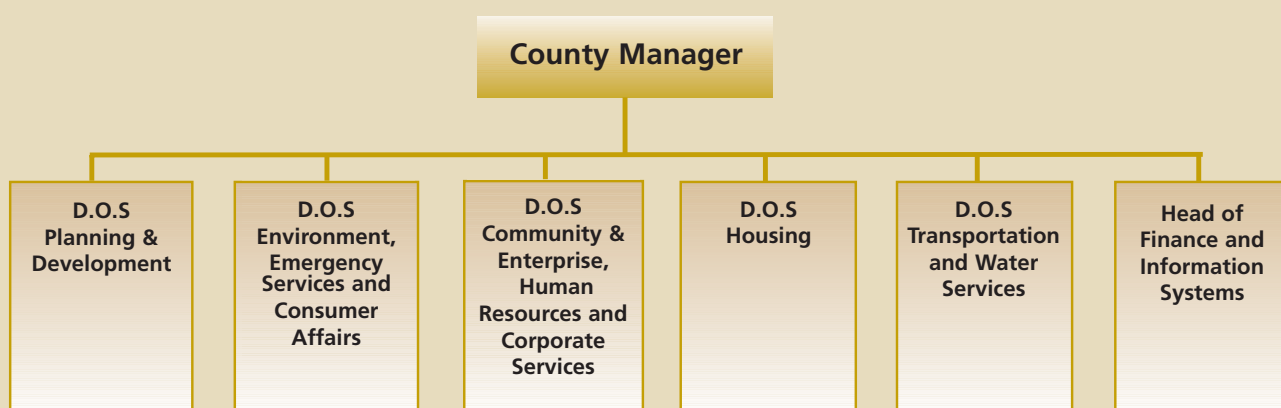
New all weather Mini Pitch in Rathkeale

LIMERICK COUNTY COUNCIL STRUCTURE AND ORGANISATIONAL CHART

ELECTED STRUCTURE



EXECUTIVE STRUCTURE



D.O.S (Director of Services)

Appendix 1

CONFERENCES/SEMINARS

Attended by Members of Limerick County Council in 2009

2nd to 4th January	Training Seminar "Irish Language Course for Councillors"	Furbo, Co Galway
9th to 11th January	Seminar "The Local Government Planning Services"	Westport, Co. Mayo,
16th to 18th January	Seminar "Effective Communication for Councillors"	Days Hotel, Waterford City
23rd & 24th January	Antrim Tourism Conference 2009	Dunadry, Co Antrim
23rd to 25th January	Training Seminar "Local Government Planning Services"	Granville Hotel, Waterford City
30th Jan to 1st February	Seminar "Effective Communication for Councillors"	Clonea, Dungarvan, Co Waterford
6th to 8th February	Seminar "Information & Communication Technologies for Councillors"	Glendalough, Co Wicklow
6th to 8th February	Merriman Winter School 2009	Meyrick Hotel, Galway
10th February	Dundalk Chamber " Sustainable Jobs for Dundalk & Beyond"	Dundalk, Co Louth
13th & 14th February	AMAI Spring Seminar 2009	Letterkenny, Co Donegal
15th to 17th February	Seminar "Renewable Energy – Planning the Future"	Sligo Park Hotel, Sligo
19th & 20th February	Mid-West Regional Authority 15th Annual Conference	Adare, Co Limerick
20th & 21st February	North/South Confederation of Councillors Conference	Castlebellingham, Louth
21st February	"Women of 1916" Conference	Enniscorthy, Co. Wexford
25th to 27th February	Training Seminar "Election 2009: The Challenges"	Ballsbridge, Dublin
26th to 28th February	Third Sector Forum "Maximising Your Vote"	Clondalkin, Dublin 22
27th & 28th February	Seminar "Understanding Hospital Radio & The Irish National War Memorial 1919-2009"	Green Isle Hotel, Dublin
27th February to 1st March	20th Colmcille Winter School 09	Letterkenny, Donegal
4th to 8th March	Rattoo Society – 17th Annual Kerry Environmental Conference	Ballybunion, Co Kerry
5th & 6th March	Ireland and Its People 2010-2015	Sligo Park Hotel, Sligo
6th to 8th March	Clonakilty Tourism Conference	Rosscarbery, Co Cork
20th March	Irish Rural Link Conference	Moate, Co Westmeath
20th to 22nd March	Seminar " Planning & Development Control"	Bushypark, Co Galway
26th & 27th March	Kerry Literary & Cultural Centre Annual Conference	Listowel, Co Kerry
27th March	The National Tidy Towns Conference	Westport, Co Mayo
27th & 28th March	Seminar " Civic Leadership & Local Government"	Edgeworthstown, Co. Longford
2nd April	BMW Regional Assembly	Roscommon
2nd & 3rd April	Association of County & City Councils Annual Conference	Kilkenny
3rd to 5th April	Seminar "Public Relations and the Media"	Letterkenny, Co Donegal
4th & 5th April	Seminar "Environmental Management: Challenges & Opportunities for Local Govrnmnt"	Kiilashee, Naas, Kildare
16th & 17th April	LAMA Annual Spring Seminar	Portlaoise, Co Laois
17th & 18th April	How to Run a Winning Campaign- The Democratic Party Way	Gormanstown, Meath
30th April to 3rd May	Third Sector Forum "Ireland at the Crossroads Economy, Europe and Emigrants - The Response of Local Government"	Kingsley Hotel, Victoria Cross, Cork
30th April to 3rd May	Tipperary Peace Convention	Tipperary Town
7th May	Respond Housing Association National Conference	Naas, Co Kildare
7th & 8th May	Sherkin Island Marine Station 25th Annual Conference	Carrigaline, Cork
14th to 16th May	Seminar "Retirement Planning for Councillors"	Castlebellingham, Louth
15th to 17th May	Seminar "Alcohol and Drug Abuse"	Glengarriff, Co Cork
22nd & 23rd May	Dungannon & South Tyrone Borough Council Conference "The Plantation in Ulster 400 Year on"	Fivemiletown, Co Tyrone

29th to 31st May	Seminar "Supporting Family Carers – Local Government Role"	Castlebellingham, Louth
26th to 28th June	15th Byrne Perry Summer Seminar	Gorey, Co Wexford
28th June to 3rd July	Synge Summer School 2009	Rathdrum, Co Wicklow
3rd to 5th July	Annual Baltimore Seminar	Skibbereen Co Cork
3rd to 5th July	Seminar "Planning Law & Practice"	Ballyconneely, Co Galway
9th July	Kilkenny Borough Council "Serving People - Preserving Heritage"	Kilkenny Castle, Kilkenny
10th to 12th July	Seminar " Effective Local Government Policy Making in the Current Recession"	Skibbereen, Co. Cork
15th to 17th July	Richard Cantillon Summer School	Ballyheigue, Co Kerry
19th to 24th July	29th Annual MacGill Summer School	Glenties, Co Donegal
24th – 26th July	Seminar "Planning & Building Energy Regulation"	Bunclody, Co Wexford
27th to 31st July	The John Hewitt Society Conference	Armagh
31st July to 2nd August	Training Seminar "Effective Communications"	Furbo, Co Galway
3rd to 7th August	William Carleton Summer School	Clogher, Co Tyrone
4th to 6th August	Seminar "Planning & the European Law"	Days Hotel, Waterford City
7th to 9th August	Seminar "Renewable Energy & Energy Conservation"	Carlton Hotel, Westport, Co Mayo
9th to 14th August	The Parnell Summer School 2009	Rathdrum, Co Wicklow
14th & 15th August	Seminar "The Role of Local Government in Protecting our Water Resource"	Furbo, Co Galway
16th to 22nd August	Merriman Summer School 2009	Ennis, Co Clare
20th to 23rd August	Humbert Summer School 2009	Lacen & Kilcummin, Mayo
28th to 30th August	Irish Language Course for Councillors	Gweedore, Co Donegal
4th to 6th September	Seminar " Planning and the European Law"	Days Hotel, Waterford
10th to 12th September	AMAI 96th Annual Conference 2009	Killarney, Co Kerry
10th to 13th September	8th Benedict Kiely Literary Weekend 2009	Strule Arts Centre, Omagh
15th to 17th September	ICSH Biennial Social Housing Conference	Athlone, Westmeath
18th September	Local Government Workshop	Dept of Government ,UCC, Cork
18th to 20th September	Seminar "The Planning & Development (Amendment) Bill 2009	The Kingsvalley Hotel, Galway City
18th to 20th September	Seminar for Elected Members	Clifden, Co Galway
24th to 26th September	Carlow 7th National Tourism Conference	The Talbot Carlow, Carlow
25th & 26th September	TJK Local Government Seminar	Patrick Punch Hotel, Limerick
1st October	The Irish Association of Suicidology Conference	Dunravan Arms Hotel, Adare, Co Limerick
8th & 9th October	Getting a Grip 2009 "Reducing Drug & Alcohol Related Harm"	Killarney, Co Kerry
9th October	Third Sector Forum Seminar	Killarney, Co Kerry
9th & 10th October	North /South Confederation of Councillors Seminar	Castlebellingham, Louth
16th to 18th October	Douglas Hyde Conference	Ballaghaderreen, Co.Roscommon
16th to 18th October	Challenged Local Authorities Promoting Community Development Seminar	Bushypark, Co Galway
30th October to 1st November	Seminar "Public Policy Making & the Councillors (Beyond Local Issues)	Carlton Hotel, Westport, Co Mayo
30th October to 1st November	Seminar "Health & Safety Issues in Local Government"	Carrick-on-Suir, Co.Tipperary
6th & 7th November	LAMA Annual Winter Seminar 2009	Carlton Hotel, Castletroy, Co Limerick
13th to 15th November	Seminar "Local Government Ethics in Public Life Your responsibility"	Sligo Park Hotel, Sligo
19th November	TSF Seminar "Business in the Environmental Goods and Services Industry"	Bewleys Hotel, Swords, Co Dublin
26th & 27th November	Clare Tourism Council "Promoting Partnership in Tourism	Ennistymon, Co Clare
27th to 29th November	Seminar "Finance Budget for 2010"	Bunclody, Wexford
1st to 3rd December	Seminar "Information & Communications Technologies for Councillors"	Edgeworthstown, Co Longford
8th & 9th December	Seminar "Representatives Entitlements – The Legal Basis"	Bushypark, Co Galway
11th to 13th December	Seminar "The Local Government Budget 2010"	Bunclody, Co Wexford
11th to 13th December	Seminar "Alternative Energy Improving Your Carbon Footprint	The Kingsvalley Hotel, Galway City
18th to 20th December	Seminar "Equality & Diversity in Modern Day Ireland"	West Hotel, Tralee, Co.Kerry

Appendix 2

STATEMENT OF ELECTION EXPENSES AND POLITICAL DONATIONS 2009

In accordance with the Local Elections (Disclosure of Donations and Expenditure Act) 1999, all candidates must submit a statement of election expenses and statutory declaration on the prescribed form to Limerick County Council.

For **successful candidates**
the following are the details:

Candidate	Expenses
	€
Brennan, Rose	4891.61
Butler, Richard	6663.83
Collins, James	8930.77
Collins, Michael	5999.80
Donegan, Mike	9095.76
Egan, John	5535.04
Enright, Leonard	2393.20
Fitzgerald, Patrick C.	5719.46
Foley, Francis	3574.27
Galvin, Liam	6427.11
Gleeson, Noel	5307.90
Hannon, Tomás	6047.88
Harty, Mary	5608.85
Heffernan, James	4406.39
Houlihan, Mike	5002.46
Jackman, Mary	8444.24
Keary, Stephen	7309.60
Naughton, David	3506.00
O'Donnell, William	4040.28
O'Donovan, Patrick	8919.63
Ryan, Eddie	9854.46
Scanlan, Jerome	6707.04
Sheahan, John	6662.70
Sheahan, Kevin	7025.60
Sheahan, Michael	3484.85
Teefy, Brigid	8261.00
Wade, Eddie	8000.00
Walsh, Leo	5361.96

Unsuccessful candidates are required to include details on their form of any donations (either a single donation or an aggregate of donations) received in excess of €634.87.

For **unsuccessful candidates**
the following are the details:

Candidate	Donations	Expenses
	€	€
Ahern, Seamus		4424.00
Burke, Mary		7790.00
Cavanagh, James		12175.55
Clifford, John		2869.39
Crehan, Richard		9625.51
Forde-Brennan, Trish		3897.10
Goulding, Stephen		6341.52
Hickey, Jim		10008.70
Hogan, Seamus	1000.00	4330.00
Keating, Seamus		1346.86
Lordan, Anne		4191.63
MacDomhnaill, Mike		2886.71
Meagher, Joseph		2474.80
Mitchell, Gerald		6571.15
Mulcair, Michael		4138.75
O Suilleabhain, Seamus		3395.00
O'Connor Kevin		1300.00
O'Doherty, Patrick		1059.00
O'Donoghue, Richard		6132.85
Secas, Elena	900.00	3703.99
Sheehan, Seamus	1000.00	3127.78
Stokes, Brian		6811.67
Wallace, Joe		7778.32
Young, Richard		1446.86

The following unsuccessful candidate did not return a statement:
Smith, Richie

Appendix 3

CONTACT DETAILS

Limerick County Council 2009

Address

Tel

Fax

Website

E-mail

County Hall, Dooradoyle, Co. Limerick

061 – 496000

061 – 496001

www.lcc.ie

secretar@limerickcoco.ie

Opening Hours: 9.30 a.m. – 4.30 p.m.

Section	Telephone	Fax	Opening Hours
Accounts Payable	061 496266	061 496013	9.30 a.m. - 4.30 p.m.
Arts Office	061 496498	061 496009	
Building Standards	061 496247	061 496014	
Civil Defence	061 358800	061 358048	
Community & Enterprise	061 496454	061 496011	
Environment	061 496264	061 496008	
Fire HQ	061 496270	061 496007	
General Administration/ Higher Ed. Grants	061 496291	061 496001	
Housing	061 496293	061 496012	
Housing Loans	061 496466	061 496001	
Human Resources	061 496331	061 496004	
Rates/Water Charges	061 496360	061 496001	
Roads	061 496233	061 496005	
Waste Collection Permits	061 496596	061 583955	
Water Services	061 496326	061 496010	
Planning	061 496347	061 496006	9.30 a.m. - 3.30 p.m.
Cash Office			9.30 a.m. - 4.00 p.m.
Motor Taxation <i>Lissanalta House, Dooradoyle</i>	061 496500	061 583933	9.30 a.m. - 3.30 p.m.
Mid West National Road Design Office, <i>Lissanalta House, Dooradoyle</i>	061 496800	061 583150	9.30 a.m. - 4.30 p.m.
Library HQ <i>Lissanalta House, Dooradoyle</i>	061 496526	061 583135	9.30 a.m. - 4.30 p.m.
AREA OFFICES			
Newcastle West <i>Motor Taxation</i>	069 – 62100 069 – 62100	069 62861 069 62861	9.30 a.m. - 4.30 p.m. 9.30 a.m. - 3.30 p.m.
Rathkeale	069 – 64129	069 63188	9.30 a.m. - 4.30 p.m.
Kilmallock	063 – 98019	063 98599	9.30 a.m. - 4.30 p.m.
Croom	061 – 397212	061 397438	9.30 a.m. - 4.30 p.m.
Annacotty	061 – 331544	061 336738	9.30 a.m. - 4.30 p.m.
Gortadroma Landfill Site	069 82339		
Mungret Civic Amenity Centre	061 305720		
Newcastle West Recycling Centre	069 78610		
Kilmallock Recycling Centre	063 98836		
Dog Warden Service	061 301604		

Appendix 4

PRINCIPAL OFFICERS

Limerick County Council 2009

County Manager	Ned Gleeson
Director of Environment, Emergency Services and Consumer Affairs	Gerry Behan
Director of Transportation and Water Services	Paul Crowe
Director of Community and Enterprise, Human Resources and Corporate Services	Josephine Cotter Coughlan
Director of Planning and Development	Tom Enright
Director of Housing	Jimmy Feane
Head of Finance and Information Systems	Oliver Killeen
County Secretary/SEO Corporate Services	Eugene Griffin
County Librarian	Damien Brady
Senior Engineer, Environment, Emergency Services and Consumer Affairs	Tom Tarpey
Senior Engineer, Transportation and Infrastructure	Pat O'Neill
Senior Engineer, Regional Road Design Office	Tim Fitzgerald
Senior Engineer, Water Services	Donal Brennan
Senior Engineer, Housing	Gerard Naughton
Senior Executive Officer, Housing	Mary Fogarty
Senior Executive Officer, Planning and Development	Christy O'Connor
Senior Executive Officer, Business Re-Engineering	Noreen Fahey
Senior Executive Officer, Human Resources	Pat Fitzgerald
Senior Executive Officer, Corporate Projects	Brian Kennedy
Head of Information Systems	Jim Dore
Senior Planner	Gerry Sheeran
Chief Fire Officer	Carmel Kirby
Veterinary Inspector	John McCarthy
Arts Officer	Joan MacKernan
Chief Technician	Michael O'Leary
Freedom of Information Officer/Customer Services Liaison Officer	Tina Knox
Partnership Facilitator/Staff Support Officer/Equality Officer	Louise Magner
Civil Defence Officer	Jos Kirby