



# 2008

Limerick County Council  
*Comhairle Chontae Luimnigh*

## Annual Report | Tuarascáil Bhliantúil





## **Mission Statement**

**“To enhance the lives of the people of County Limerick through the efficient delivery of accessible quality services, with a focus on social inclusion and the promotion of sustainable balanced development”**

# CONTENTS

<b>Introduction by the Cathaoirleach/County Manager</b>	<b>2</b>	Library	44
<b>Members of Limerick County Council</b>	<b>4</b>	County Arts Office	45
<b>Council Members and Meetings</b>	<b>6</b>	Human Resources	46
Corporate Policy Group	6	Corporate Services	46
Committees of the Council	6	General Administration	47
Strategic Policy Committees	7	Freedom of Information	48
Representation on other Bodies	10	Internal Audit	48
<b>Civic Reception 2008</b>	<b>12</b>	Workplace Partnership	48
<b>Highlights 2008</b>	<b>13</b>	Service Indicators	49
<b>Celebrating Community Events 2008</b>	<b>18</b>	<b>Planning and Development</b>	<b>50</b>
<b>Housing</b>	<b>22</b>	Service Indicators	54
Service Indicators	25	<b>Finance, Information Systems and Motor Taxation</b>	<b>56</b>
<b>Transportation and Water Services</b>	<b>26</b>	Finance	56
Roads	26	Information Systems	59
Water Services	30	Motor Taxation	60
Service Indicators	32	Service Indicators	61
<b>Environment, Emergency Services and Consumer Affairs</b>	<b>33</b>	<b>Area Office Development</b>	<b>63</b>
Environment	33	Bruff/Castleconnell	63
Emergency Services	35	Kilmallock	64
Veterinary Services	36	Newcastle West	65
Building Standards	36	Rathkeale	68
Civil Defence	37	<b>Limerick County Council Structure and Organisational Chart</b>	<b>70</b>
Water Safety	38	<b>Appendices</b>	
Corporate Projects	38	Appendix 1	
Service Indicators	39	Conferences/Seminars attended by the Members in 2008	71
<b>Community and Enterprise, Human Resources and Corporate Services</b>	<b>42</b>	Appendix 2	
Community and Enterprise	42	Contact Details for Limerick County Council	74
		Appendix 3	
		Principal Officers of Limerick County Council 2008	75

## INTRODUCTION BY THE CATHAOIRLEACH AND COUNTY MANAGER

We are delighted to introduce the Annual Report of Limerick County Council for the calendar year 2008. This report contains information about the many services provided by the Council, its elected members and departments.

The 2008 report reflects the commitment to delivering vital services by all our Members, Management and Staff, both indoor and outdoor. Their shared enthusiasm, commitment and teamwork is testament to the can-do culture that exists at Limerick County Council. Centred on quality, this inherent work ethos has enabled the Council to deliver positive changes to the day-to-day lives of the citizens of County Limerick.

The details of the Council's achievements in 2008 are set out under each Directorate's report but we would like to take this opportunity to highlight some of the important work, which was carried out on behalf of the people of County Limerick during the year.

2008 commenced with the completion of infrastructure projects that marked a milestone in the delivery of Local Government services in County Limerick. The Rathkeale Area Office, which is complemented by a Branch Library and Arts Centre, and Lissanalta House were officially opened at the start of the year. By providing key local authority services that are immediately accessible the Council has demonstrated its awareness of the need to deliver a modern and comprehensive system of Local Government.

The Council recognises also that services must be responsive to the changing needs of the people they serve. No more is this evident than in the advancement of numerous significant infrastructural projects cross the County.

Construction work on the Limerick Tunnel Project, the largest of its kind ever undertaken in the State, is well underway and is on course for completion by September 2010. Elsewhere, work is progressing on the N7 Nenagh-Limerick High Quality Dual Carriageway, which was awarded motorway status recently. Work is also continuing on the M20 Cork-Limerick Motorway scheme, which forms part of the proposed Atlantic corridor. The N21 Abbeyfeale-Adare Scheme, meanwhile, is progressing towards the identification of a route corridor.

The investment in water and wastewater infrastructure continued with considerable progress being made on various Water and Sewerage Schemes throughout the county. Minister John Gormley officially marked the completion of the DBO Project for Group Water Supply Schemes in March.

While the provision of infrastructure is essential for the development of our county, a number of advances were also made in improving the quality of life for communities. 2008 was a very positive year for Limerick County Council with the provision of many new sporting and recreational facilities and services, one of the core functions of Local Government.

In January, President Mary McAleese officially opened Askeaton Swimming Pool and Leisure Centre. The County Limerick Local Sports Partnership unveiled a multi-agency blueprint for the development of sport in County Limerick. County Limerick's most recent public park, along with a children's playground, skateboard park and bandstand area was opened at Castletroy in August. Elsewhere, playgrounds at Abbeyfeale and Askeaton were completed while the development of all weather mini-pitches commenced at various locations throughout the county.





**John Gallahue**  
*Cathaoirleach*



**Ned Gleeson**  
*County Manager*

2008 was also marked by a number of significant and progressive developments in the areas of housing and planning. Local Area Plans were adopted for Abbeyfeale, Caherconlish and Newcastle West. The Council adopted a new Taking in Charge of Estates Policy which provides for the take over of estates at an early stage during construction work, thereby ensuring that all works are completed satisfactorily and free from major defects. We also adopted a new Development Contribution Scheme, which finances various infrastructural projects throughout the county and provides finance for the Community, Sports and Cultural Grants Scheme.

Around the County a total of 59 housing scheme units were completed while construction commenced on a further 79 houses. The Council's "Tenant Support Document" was launched in April while a new Traveller Accommodation Programme for the period 2009-2013 was adopted in December.

In the area of environment, Limerick County Council participated in the drafting and publication of the second annual report on the Replacement Waste Management Plan 2006- 2011 for the Limerick/Clare/Kerry Region.

Despite the financial constraints it now faces as a result of the economic downturn, Limerick County Council remains committed to providing a quality service to the people of County Limerick. 'Serving the customer better' has been a key theme of the Local Government Modernisation Programme. Customer service improvements continue to be a major objective for the Council, under its Corporate Plan 2004-09, and in 2008 a number of service improvement initiatives continued.

As Cathaoirleach and County Manager, we are pleased to confirm that the results achieved during 2008 met and exceeded the expectations at the start of the year. We are confident that with an excellent team of staff, a supportive Council, and continued good relations with local communities and other agencies a great deal will be achieved on behalf of our customers, the citizens of County Limerick, during the coming year.

A handwritten signature in black ink, reading "John Gallahue".

**John Gallahue**  
*Cathaoirleach*

A handwritten signature in black ink, reading "Ned Gleeson".

**Ned Gleeson**  
*County Manager*

## MEMBERS OF LIMERICK COUNTY COUNCIL



*Cathaoirleach 2008-2009*  
**John Gallahue**



*Leas Chathaoirleach 2008-2009*  
**Francis Foley**

### BRUFF ELECTORAL AREA



**Rose Brennan**  
14, Park Avenue,  
Adare,  
Co. Limerick (PD)



**Richard Butler**  
Dooradoyle Road,  
Dooradoyle,  
Co. Limerick. (FG)



**James Cavanagh**  
Graigue,  
Adare,  
Co. Limerick (FF)



**John Clifford**  
Crean,  
Bruff,  
Kilmallock,  
Co. Limerick. (FF)



**Leonard Enright**  
Ballyanrahan,  
Patrickswell,  
Co. Limerick. (FF)



**Cormac Hurley**  
94, Sheelin Road,  
Caherdavin Park,  
Limerick. (FG)



**Tomás Hannon**  
4, Dromore Rise,  
Raheen,  
Limerick. (LAB)

### CASTLECONNELL ELECTORAL AREA



**Noel Gleeson**  
Cullenagh,  
Cappamore,  
Co. Limerick. (FF)



**Mary Harty**  
Corelish West,  
Pallasgrean,  
Co. Limerick. (FG)



**Mary Jackman**  
Newtown, Castletroy,  
Co. Limerick. (FG)



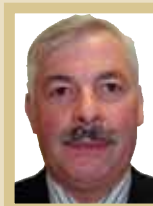
**Noreen Ryan**  
Lacka, Castleconnell,  
Co. Limerick. (FF)



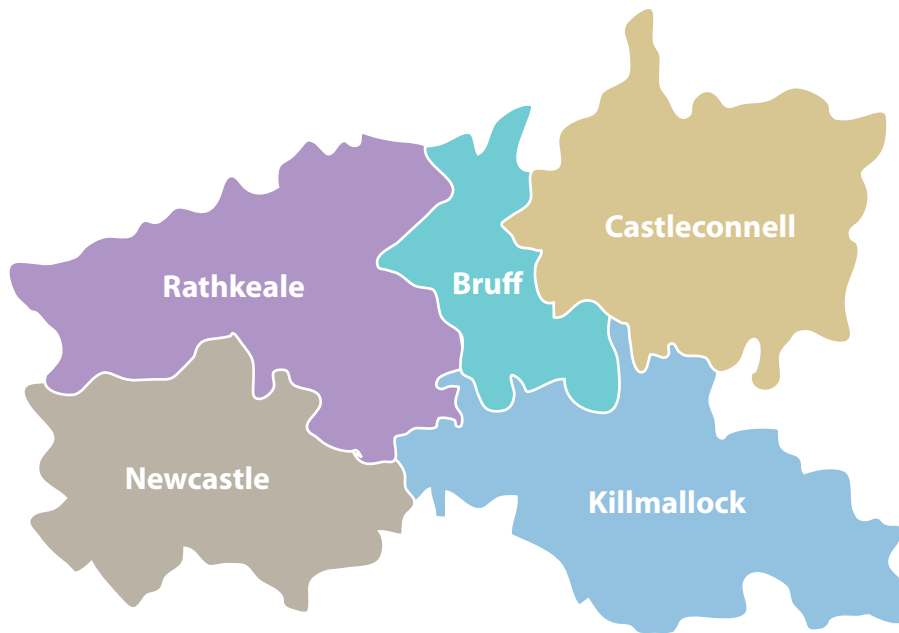
**Brigid Teefy**  
Ballybricken,  
Grange,  
Co. Limerick. (PD)



**Eddie Wade**  
Cahernorry,  
Drombanna,  
Co. Limerick. (FF)



**Leo Walsh**  
Lower Raheen,  
Ballyneety,  
Co. Limerick (FG)



## KILMALLOCK ELECTORAL AREA



**Eddie Creighton**  
9, St. Joseph's Terrace,  
Hospital,  
Co. Limerick. (PD)



**John Gallahue,**  
(Cathaoirleach 2008/2009),  
Main Street,  
Ballylanders,  
Co. Limerick. (FF)



**James Houlihan**  
Stylepark,  
Bruree,  
Co. Limerick. (FG)



**Patrick McAuliffe**  
Railway Road,  
Kilmallock,  
Co. Limerick. (FF)

## NEWCASTLE ELECTORAL AREA



**Michael Collins**  
Ballinvallig,  
Newcastle West,  
Co. Limerick. (FF)



**Francis Foley,**  
(Leas-Chathaoirleach  
2008/2009)  
2, Foxfield, Elliswood,  
Killarney Road, Abbeyfeale,  
Co. Limerick. (FF)



**Liam Galvin**  
Ballaugh,  
Abbeyfeale,  
Co. Limerick. (FG)



**Patrick O'Donovan**  
Churchtown Road,  
Newcastle West,  
Co. Limerick. (FG)



**Jerome Scanlan**  
Ballydonnell,  
Feohanagh,  
Co. Limerick. (FG)

## RATHKEALE ELECTORAL AREA



**Michael Mulcair**  
Ballyeagh,  
Croagh,  
Co. Limerick. (FF).



**David Naughton**  
Ballysteen,  
Askeaton,  
Co. Limerick. (FG)



**Tom Neville**  
Croagh, Rathkeale,  
Co. Limerick. (FG)



**John Sheahan**  
Ballyguiltanane,  
Glin,  
Co. Limerick. (FG)



**Kevin Sheahan**  
Cloonreask, Askeaton,  
Co. Limerick. (FF)

## COUNCIL MEMBERS AND MEETINGS

There are 28 members on the Council – 7 members in the Bruff and Castleconnell Electoral Areas, 5 members in the Newcastle and Rathkeale Electoral Areas and 4 members in the Kilmallock Electoral Area.



*Cllr. Kevin Sheahan outgoing Cathaoirleach congratulating Cllr. John Gallahue on his election as Cathaoirleach.*



*Cllr. Brigid Teefy outgoing Leas Cathaoirleach handing over the Chain of Office to Cllr. Francis Foley on his election as Leas Cathaoirleach*

Council Meetings are normally held on the fourth Monday of each month (except August when there is no meeting) in the Council Chamber at County Hall. The full Council met on 23 occasions (excluding committee meetings)

### CORPORATE POLICY GROUP

The Corporate Policy Group (CPG) is a Committee of the Council consisting of the Cathaoirleach of the Council and the Chairs of each of the Strategic Policy Committees. Membership is as follows:-

- Councillor John Gallahue, Cathaoirleach
- Councillor Tom Neville, Chairperson of the Housing SPC
- Councillor Rose Brennan, Chairperson of the Transportation and Infrastructural SPC
- Councillor John Clifford, Chairperson of the Planning and Development SPC
- Councillor Francis Foley, Chairperson of the Social, Cultural and Community Development SPC
- Councillor Pat O'Donovan, Chairperson of the Environmental SPC

The CPG links the work of the different SPCs; acts as a type of cabinet and provides a forum where policy positions can be agreed for submission to the full Council which will retain the decision making authority. The CPG also monitors the performance of the local authority and plays a key role in preparing the budget. The CPG met on 2 occasions.

### COMMITTEES OF THE COUNCIL

#### STRATEGIC POLICY COMMITTEES

Title	No. of Members	No. of Meetings
Housing	18	4
Transportation and Infrastructural	18	4
Planning and Development	18	4
Social, Cultural and Community Development	15	3
Environmental	15	4





Cllr. Kevin Sheahan, Cathaoirleach presenting Cllr. John Griffin with a Certificate of Appreciation on his Retirement to honour his contribution and in appreciation of his 29 years' service as a Public Representative.

## ELECTORAL AREA COMMITTEES

Title	No. of Members	No. of Meetings
Bruff Area	7	10
Castleconnell Area	7	9
Kilmallock Area	4	7
Newcastle Area	5	12
Rathkeale Area	5	21

## OTHER COMMITTEES

Title	No. of Members	No. of Meetings
Traveller Accommodation Consultative Committee	12	3
Rural Water Committee	9	4
Audit Committee	5	5
Joint Policing Committee	27	Established in November

## STRATEGIC POLICY COMMITTEES

Each Strategic Policy Committee comprises of elected Councillors and sectoral representatives, working together in a more participative form of democracy, thereby providing a more effective policy focus on the functions and activities carried out by Limerick County Council. Each SPC is supported in its work by a Director of Services. While each SPC formulates and develops policy, the final decisions will rest ultimately with the full Council.

## PLANNING AND DEVELOPMENT SPC:

<b>Chairperson</b>	Councillor J. Clifford
<b>Members</b>	Councillor N. Ryan Councillor K. Sheahan. Councillor E. Wade. Councillor M. Mulcair Councillor N. Gleeson. Councillor T. Hannon Councillor M. Jackman. Councillor J. Scanlan Councillor D. Naughton Councillor J. Sheahan Councillor L. Walsh

## SECTORAL REPRESENTATIVES

### Development/Construction and Business/Commercial

- Mr. Liam Ryan,
- Mr. Tony O'Shea,

### Community and Voluntary, including Environment, Conservation, Culture and Disadvantaged

- Ms. Ann Gill,
- Mr. Charles Richardson,
- Mr. Jeremiah O'Connor,

### Agriculture/Farming

- Mr. John Walsh,

## PLANNING AND DEVELOPMENT SPC

- There were a total of 4 SPC meetings held. Some of the main issues discussed included:-
- The draft Development Contribution Scheme
- The draft Take Over of Estates Policy
- Draft Rural Design Guidelines
- The Planning System and Flood Risk Management- Consultation Draft Guidelines, from DOELG dated September 2008.
- Variation to County Development Plan 2005-2011

## SOCIAL, CULTURAL AND COMMUNITY DEVELOPMENT SPC:

### Chairperson Members

Councillor F. Foley  
Councillor E. Creighton  
Councillor R. Brennan.  
Councillor Ml. Collins.  
Councillor P. McAuliffe.  
Councillor L. Enright.  
Councillor P. O'Donovan.  
Councillor C. Hurley.  
Councillor D. Naughton.  
Councillor L. Galvin.

### SECTORAL REPRESENTATIVES

#### Development/Construction and Business/Commercial

- Mr. John Quinn

#### Community and Voluntary, including Environment, Conservation, Culture and Disadvantaged

- Ms. Joan Dempsey
- Mr. Seamus Hunt
- Mr. Seamus Ryan

#### Agriculture/Farming

- Mr. Robert Ruttle

### SOCIAL, CULTURAL AND COMMUNITY DEVELOPMENT SPC

The SPC met on 3 occasions. Amongst the items on the work programme for 2008 were:

- Mini-Pitch Scheme
- Community Playground Grant Scheme
- Comhairle na nÓg
- Migrants Forum
- County Development Board Review/Indecon Report
- Recreation Strategy for Youth
- Libraries
- Enterprise Strategy
- Tourism Forum
- Disability Sub-Committee
- Local Anti-Poverty Strategy
- Social, Economic and Cultural Analysis Document

## TRANSPORTATION AND INFRASTRUCTURAL SPC:

### Chairperson Members

Councillor R. Brennan  
Councillor B. Teefy  
Councillor M. Collins  
Councillor P. McAuliffe  
Councillor J. Gallahue  
Councillor K. Sheahan  
Councillor L. Galvin  
Councillor J. Houlihan  
Councillor T. Neville  
Councillor M. Jackman  
Councillor J. Cavanagh  
Councillor L. Walsh

### SECTORAL REPRESENTATIVES

#### Development/Construction and Business/Commercial

- Mr. John McLnerney
- Mr. Peter Ryan

#### Community and Voluntary, including Environment, Conservation, Culture and Disadvantaged

- Mr. Sean Donovan
- Mr. Denis McAuliffe

#### Agriculture/Farming

- Mr. Aidan Gleeson

#### Trade Union

- Mr. Michael McNamara

### TRANSPORTATION AND INFRASTRUCTURAL SPC :

The SPC met on 4 occasions. Items discussed by the Committee included:

- Water Services Act 2007
- Drinking Water Regulations
- Waste Water Discharge
- Burial Ground Bye-Laws
- Burial Ground Review Strategy
- Road Safety Strategy
- Proposed Declaration of Motorways
- Disability Parking
- Safety Audits
- Take in charge of Estates
- Cycle to Work Scheme
- Private Business Signage Policy

## ENVIRONMENTAL SPC:

<b>Chairperson</b>	Councillor P. O'Donovan
<b>Members</b>	Councillor E. Creighton
	Councillor M. Mulcair
	Councillor L. Enright
	Councillor J. Gallahue
	Councillor T. Hannon
	Councillor M. Harty
	Councillor R. Butler.
	Councillor J. Houlihan.
	Councillor C. Hurley.

### SECTORAL REPRESENTATIVES

#### Development/Construction and Business/Commercial

- Mr. Trevor Montgomery

#### Community and Voluntary, including Environment, Conservation, Culture and Disadvantaged

- Mr. Michael Buckley
- Mr. Michael Ryan
- Mr. Joe Whelan

#### Agriculture/Farming

- Mr. Ger Quane

### ENVIRONMENTAL SPC

The SPC held 4 meetings. Three of the meetings were held in County Hall while the September meeting was held at Raheenagh Community Centre, West Limerick. Following that meeting, the members visited a nearby farm in order to view the Biomass Heating system in place there. (This was part of a chicken litter incineration project).

Items discussed at the meetings included -

- Household waste survey.
- Draft Noise Action Plan.
- The Farm Film Plastics Collection Scheme.
- End-of-Life Vehicles (Regulations).
- Draft Litter Management Plan 2008 - 2011
- The Home Energy Savings Scheme
- Biomass Heating Systems
- Annual Report on the Replacement Waste Management Plan 2006 –2011
- LAPD Plan.
- The Regulation of the Poultry Industry.

## HOUSING SPC:

<b>Chairperson</b>	Councillor T. Neville
<b>Members</b>	Councillor B. Teefy
	Councillor E. Wade.
	Councillor J. Clifford
	Councillor N. Ryan
	Councillor F. Foley
	Councillor N. Gleeson
	Councillor J. Scanlan
	Councillor R. Butler
	Councillor M. Harty
	Councillor J. Sheahan
	Councillor J. Cavanagh

### SECTORAL REPRESENTATIVES

#### Development/Construction and Business/Commercial

- Mr. Liam McArdle.

#### Community and Voluntary, including Environment, Conservation, Culture and Disadvantaged

- Ms. Alice McAuliffe.
- Mr. Larry Begley.
- Mr. Kevin Flynn.
- Mr. Seamus Lordan.

#### Trade Union

- Mr. Michael McNamara.

### HOUSING SPC

There were 4 meetings held. The following matters were discussed:

- Part V Social and Affordable Housing
- Tenant Stock Survey
- Traveller Accommodation Programme 2009-2013
- Tenant Support Policy
- New Grant Schemes
- New Home Choice Loan
- New Housing Bill 2008
- Draft Noise Regulations

## REPRESENTATION ON OTHER BODIES

### ASSOCIATION OF COUNTY AND CITY COUNCILS (FORMERLY GENERAL COUNCIL OF COUNTY COUNCILS)

Councillor David Naughton.  
Councillor Noreen Ryan.  
Councillor Rose Brennan.

### COUNTY LIMERICK VOCATIONAL EDUCATION COMMITTEE

Councillor Liam Galvin.  
Councillor Mary Jackman.  
Councillor John Sheahan.  
Councillor John Clifford.  
Councillor Michael Mulcair.  
Councillor Patrick McAuliffe.  
Councillor Rose Brennan.  
Councillor Brigid Teefy.  
Councillor Francis Foley.

### MID-WEST REGIONAL AUTHORITY

Councillor Cormac Hurley.  
Councillor James Houlihan.  
Councillor Leonard Enright.  
Councillor Eddie Creighton,  
Councillor Eddie Wade.  
Councillor Rose Brennan.  
Councillor Leo Walsh.

### Operational Committee of Mid-West Regional Authority

Cathaoirleach – Councillor John Gallahue  
Councillor Eddie Creighton.

### SOUTHERN AND EASTERN REGIONAL ASSEMBLY

Councillor Eddie Creighton.  
Councillor Leonard Enright.

### LIMERICK MARKET TRUSTEES

Cathaoirleach – Councillor John Gallahue  
Councillor Tomás Hannon.  
Councillor Mary Jackman.  
Councillor Brigid Teefy.  
Councillor Eddie Wade.  
Councillor Francis Foley.  
Councillor Michael Collins.  
Councillor James Cavanagh.  
Councillor Leo Walsh.

### Management Committee of Limerick Market Trustees

Councillor John Gallahue.  
Councillor James Cavanagh.

### SHANNON FOYNES PORT COMPANY

Councillor David Naughton.

### LIBRARY ASSOCIATION OF IRELAND

Councillor Kevin Sheahan.

### IRISH PUBLIC BODIES MUTUAL INSURANCES:

Councillor Noreen Ryan.

### LOCAL AUTHORITY MEMBERS' ASSOCIATION

Councillor Kevin Sheahan.

### NATIONAL UNIVERSITY OF IRELAND, CORK – GOVERNING AUTHORITY

Councillor Eddie Wade.

### UNIVERSITY OF LIMERICK - GOVERNING AUTHORITY

Cathaoirleach – Councillor John Gallahue

### Advisory Committee, Graduate Medical School, University of Limerick

Cathaoirleach – Councillor John Gallahue

### ADARE HERITAGE TRUST LTD.

Cathaoirleach – Councillor John Gallahue

### LIMERICK COUNTY ENTERPRISE BOARD

Councillor Mary Harty.  
Councillor Brigid Teefy.  
Councillor Michael Collins.  
Councillor Noreen Ryan.



**WEST LIMERICK RESOURCES LTD.**

Councillor Liam Galvin.  
Councillor Michael Collins.  
Councillor James Cavanagh.  
Councillor Patrick O'Donovan.

**BALLYHOURA DEVELOPMENT LIMITED**

Councillor James Houlihan.  
Councillor Noel Gleeson.

**RCCN (RURAL COMMUNITY CARE NETWORK)**

Councillor Francis Foley.  
Councillor Jerome Scanlan.

**LIMERICK/BALLYBROPHY RAIL LINK PARTNERSHIP GROUP:**

Councillor Mary Jackman.  
Councillor Eddie Wade.

**HUNT MUSEUMS TRUST**

Councillor Michael Mulcair.

**LOCAL TRAVELLER ACCOMMODATION CONSULTATIVE COMMITTEE**

Councillor Michael Mulcair.  
Councillor Mary Jackman.  
Councillor Pat McAuliffe.  
Councillor Francis Foley.  
Councillor Patrick O'Donovan.

**COUNTY RURAL WATER MONITORING COMMITTEE**

Councillor Michael Mulcair.  
Councillor John Gallahue.  
Councillor James Houlihan.

**RIVER BASIN DISTRICT ADVISORY COUNCILS:**

- (a) **Shannon River Basin District Advisory Council**  
Councillor Eddie Wade.  
Councillor Michael Mulcair.
- (b) **South-Eastern River Basin District Advisory Council**  
Councillor Eddie Creighton.  
Councillor Patrick O'Donovan.
- (c) **South-Western River Basin District Advisory Council**  
Councillor Mary Jackman.  
Councillor Kevin Sheahan.

**REGIONAL HEALTH FORUM WEST**

Councillor Noreen Ryan.  
Councillor Leonard Enright.  
Councillor Brigid Teefy.  
Councillor Richard Butler.

**INTERAGENCY FORUM FOR RATHKEALE TOWN**

Councillor Michael Mulcair.  
Councillor Tom Neville

**AUDIT COMMITTEE:**

Councillor John Gallahue.

**SPECIAL PURPOSE ENTERPRISE COMPANY**

Cathaoirleach – Councillor John Gallahue  
Councillor Kevin Sheahan.  
Councillor Mary Harty.

**JOINT POLICING COMMITTEE:**

Cathaoirleach – Councillor John Gallahue  
Councillor Mary Jackman  
Councillor Richard Butler  
Councillor Jerome Scanlan  
Councillor John Sheahan  
Councillor Liam Galvin  
Councillor Tomás Hannon  
Councillor Kevin Sheahan  
Councillor Michael Collins  
Councillor Eddie Wade  
Councillor Patrick McAuliffe  
Councillor John Clifford  
Councillor James Cavanagh.  
Councillor Michael Mulcair  
Councillor Eddie Creighton

**COUNTY DEVELOPMENT BOARD -**

Cathaoirleach – Councillor John Gallahue  
Councillor Tom Neville  
Councillor Rose Brennan  
Councillor John Clifford  
Councillor Francis Foley  
Councillor Pat O'Donovan

## CIVIC RECEPTION 2008

Limerick County Council hosted a Civic Reception at a meeting held on 16th June 2008 to bestow Civic Honours on the following:

- (a) Most Rev. Donal Murray, D.D., Bishop of Limerick, to mark the Silver Jubilee of his Episcopal Consecration and in recognition of his continuing service to the people of Limerick.
- (b) The Right Rev. Michael Mayes, to mark his retirement as Church of Ireland Bishop of Limerick, Killaloe and Ardfert after forty three years in the ordained ministry and in recognition of his service to the people of Limerick.
- (c) The Franciscan Order in recognition and commemoration of more than seven hundred and thirty years of service to the people of Limerick.



*L/R - Ned Gleeson, County Manager; Most Rev. Donal Murray D.D., Bishop of Limerick; Cllr. Kevin Sheahan, Cathaoirleach; The Right Rev. Michael Mayes, Retired Bishop of Limerick, Killaloe and Ardfert and Fr. Hugh McKenna, Vice Provincial of the Franciscan Order*

## HIGHLIGHTS 2008

**1/2.** Official Opening of Askeaton Pool and Leisure Centre by President Mary McAleese on 21st January 2008

**3.** Cllr. K. Sheahan, Cathaoirleach, making a presentation to President Mary McAleese at the Official Opening of Askeaton Pool and Leisure Centre

**4.** A view of Askeaton Pool and Leisure Centre

**5.** Cllr. J. Gallahue, Cathaoirleach and Gerry Behan, Director, Environment, Emergency Services and Consumer Affairs, at the Official Opening of Castletroy Park in August.





## HIGHLIGHTS 2008

6. *Signing of Contract for All Weather Mini Pitches in June*
7. *FAI and Local Authority playmakers join forces to appoint Conor Nestor as FAI Development Officer for County Limerick.*
8. *Official Function held in County Hall in April to mark the 50th Anniversary of the founding of the Irish League of Credit Unions*
- 9/10. *Mr. John Gormley T.D., Minister for the Environment, Heritage and Local Government at a ceremony held in the Heritage Centre, Lough Gur, for the completion of DBO Project for Group Water Supply Schemes*



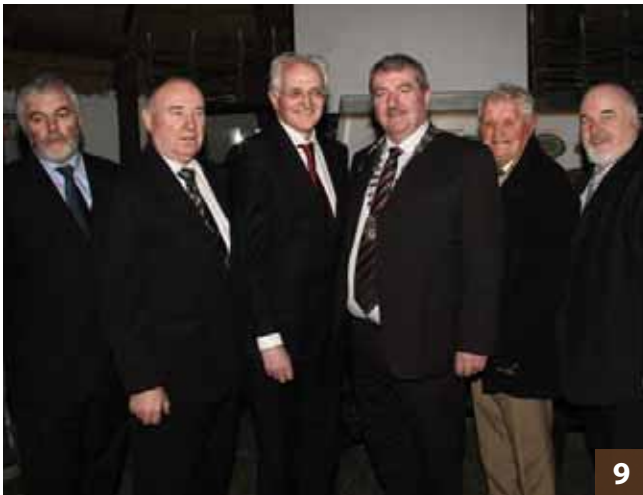
6



7



8



9



10



## HIGHLIGHTS 2008

11. Kilfinane Urban Renewal Nominated for UK National Transport Awards "Walking and Public Realm"
12. Signing of Contract for construction of Kilmallock Area Office, Library and Court House
13. Official Opening of Lissanalta House on 28th March 2008 – L/R Cllr. K Sheahan, Cathaoirleach, Mr. J. Gormley T.D., Minister for the Environment Heritage and Local Government and Ned Gleeson, County Manager
14. Cllr. K. Sheahan, Cathaoirleach, making a presentation to Minister J. Gormley at the Official Opening of Lissanalta House.
15. View of Lissanalta House, Dooradoyle



12



11



13



14



15

## HIGHLIGHTS 2008

16. Indian Ambassador's Visit to County Hall
17. Munster the European Rugby Champions 2008 – celebrating in Limerick the winning of the Heineken European Cup for the 2nd time
18. Launch of Tidy Towns Competition 2008
19. Visit by delegation from Gdansk, Poland, to County Hall in June 2008
20. Co-operation Ireland Pride of Place Competition where Cappamore won an award.



17



16



18



19



20



## HIGHLIGHTS 2008

21. A view of "Áras Seán Finn", Rathkeale

22/23. Cllr. John Griffin officially opening the New Rathkeale Electoral Area Headquarters "Áras Seán Finn" which included re-furbishment of the Carnegie Library Building and Arts Centre, on 28th January 2008

24. Limerick Tunnel Project - Tunnel Segment during float out process



21



22



23



24

## CELEBRATING COMMUNITY EVENTS 2008

1. Cllr. B. Teefy presenting First Prize to pupils from Our Lady's Abbey, Adare, at the Primary Schools Environmental Competition 2008 – Category - Best Kept School Grounds
2. Ballylanders Junior School Wardens – “In Action”
3. Pupils from Ballysteen and Shountrade N.S. attending the Sustainable Energy Ireland Workshops at Dooradoyle Library
4. At the opening of Castletroy Park - enjoying the facilities
5. At the opening of Castletroy Park - Cllr. J. Gallahue, Cathaoirleach, participating in the “fun and games”



1



2



3



4



5



## CELEBRATING COMMUNITY EVENTS 2008

6. Comhairle na nÓg in the Council Chamber in County Hall
7. Croom Spring Clean 2008
8. Winners at the Environmental Achievement Awards Ceremony on 30th September.
9. Castleconnell Area Committee Chairperson, Cllr. Mary Harty presenting a Certificate of Recognition of Achievement to Martin Wallace, Principal of Castletroy College, on 12th May, 2008, at County Hall, Dooradoyle, to mark the School's achievements at the Munster Schools Senior and Junior Rugby Cup, 2008 Competitions.
10. Cllr. B. Teefy with pupils from Ahane National School, Lisnagry, who were presented with a Certificate of Recognition at the Primary Schools Environmental Competition



6



7



8



9



10

## CELEBRATING COMMUNITY EVENTS 2008

11. *Presentation of Junior Achievement Ireland Certificates at Award Ceremony in June*
12. *Presentation to Sr. Theresa Murphy, Principal of O'Healy and O'Rourke NS in recognition of her assistance and support to the Junior School Warden Scheme in Kilmallock. The scheme ceased operation after 30 years of service to the pupils.*
13. *Scoil Mhuire NS, Murroe - Awarded Green Flag at An Taisce Greenschool Award Ceremony held in Cork*
14. *"Leading by example" – Limerick County and City join forces to launch another successful Mini Marathon*
15. *Cllr. K. Sheahan, Cathlaoirleach, opening the Motorhome Facility in Askeaton*





## CELEBRATING COMMUNITY EVENTS 2008

16. Launch of Co. Limerick Local Sports Partnership Strategic Plan 2008-2011 in November
17. "Keep the flame burning" – Limerick County Council recognises the contributions of thousands of volunteers to the Special Olympics programme.
18. Presentation of Certificates in County Hall to the Cappamore Set Dancers to mark their achievements at the All Ireland Scor na nÓg and Readoirí 2008 competitions.
19. Presentation of Certificates in County Hall to the Pallasgreen Ballad Group to mark their achievements at the All Ireland Scor na nÓg and Readoirí 2008 competitions
20. Presentation of Certificate in County Hall to Gillian Bourke in recognition of her achievements with the Irish Ladies Rugby Team 2008



16



17



18



19



20



## HOUSING

**Jimmy Feane**  
*Director of Housing*

### HOUSING

#### TO ENSURE THAT ALL PEOPLE OF COUNTY LIMERICK HAVE ADEQUATE ACCOMMODATION APPROPRIATE TO THEIR NEEDS

The main achievements during the year;

#### 79 houses under construction in the following towns and villages.

Location	No. of Houses
Bruff	16
Pallaskenry	10
Tournafulla	7
Rathkeale	25
Askeaton	21

#### 59 houses completed in the following locations

Location	No. of Houses
Mountcollins	8
Carrickerry	10
Newcastle West	22
Kilfinane	19



Coillte Corran Carrickerry

#### Houses purchased – 11

#### Demountable type dwellings provided – 5 applicants

- Expenditure for the construction and purchase of houses for letting came to approximately €16m.
- At the 31st December the Council owned 2,001 dwellings which were occupied by its tenants.

APPLICATIONS FOR HOUSING ASSISTANCE			
Scheme	Applications	Approvals	Total Value of Approvals
Shared Ownership Scheme	20	6	€717,000
Affordable Housing (Part V)	59	8 **	Nil
House Purchase Annuity Loan	1	1	€75,000
Tenant Purchase Annuity Loan	2	2	€126,000
House Improvement Loan	1	0	Nil
Disabled Persons Grant	0	30	€245,251.50
Essential Repairs Grant	0	16	€99,256.78
New Grants Scheme	455	146	€1,132,245.17
Caravan Loan	2	2	€12,260



**Affordable Housing** - The number of applicants appointed to affordable housing under Part V of the Planning and Development Acts was 8

**Rental Accommodation Scheme (RAS)** - 213 clients had been transferred onto the RAS scheme in the County.

**Standards for Private Rented Accommodation** - 188 inspections of private rented accommodation were carried out throughout the County.

**Voluntary Housing Forum** - met 4 times and discussed a range of issues relating to the Voluntary Housing Sector's activities.

**The Housing Services Company** has been set up to deliver a range of services to the members of the Voluntary Housing Associations to include :

- Health and Safety Advice
- Housing Management
- Housing Care and Development
- Development of Policy

10 No. Units of accommodation were provided by the Voluntary Sector during the year and a further 173 No. Units were at various stages in planning.

**Other statistics relating to the Housing Section's activities in 2008 are:**

- A Housing Needs Assessment carried out and 1,124 applicants were considered to be in need of Housing.
- 193 Housing Allocations made comprising newly constructed houses and casual vacancies.
- Rental income for the year amounted to €4,944,277. The average rent paid by Council tenants was €49 per week.
- The average all-in cost including land costs, fees, etc. varied between €151,000 for a two-bedroomed one storey unit and €168,000 for a three-bedroomed unit.
- 8 No. Units of Accommodation were improved under the Remedial Works Scheme.
- Tenders have been signed for the commencement of the Refurbishment works to Rural Cottages Scheme.
- 4 No. privately owned houses were refurbished under the Improvement Works in Lieu of Rehousing Scheme.

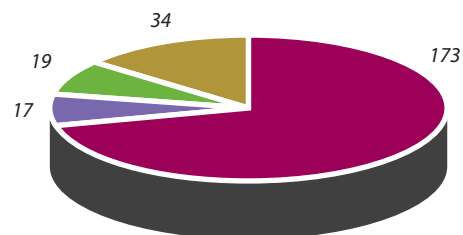
- Works were completed on 85 No. rented Local Authority Houses under the Installation of Central Heating/Smoke Alarms/Insulation Programme.

## TRAVELLER ACCOMMODATION

This year was the final year of the Traveller Accommodation Programme 2005-2008 and over 90% of the stated targets for the period of the plan were achieved.

- In November there were two hundred and forty three Traveller families living in accommodation provided by or acquired with assistance from Limerick County Council.

**Accommodation Provided by Limerick County Council to Traveller families.**



- ★ Standard Housing
- ★ Halting Sites
- ★ Group Housing
- ★ Loans / Grants

- A new Traveller Accommodation Programme for the period 2009-2013 was adopted in December and this sets out the policy, implementation strategy, assessed needs and annual targets for the period of the programme.
- The Local Traveller Accommodation Consultative Committee met on 3 occasions during the year.

## HOMELESS SERVICES

- 150 cases presented as homeless or in danger of becoming homeless in 2008. Almost half of these (47%) contacted the homeless service as a result of eviction, domestic violence or family disputes.
- The homeless service responded to emergency accommodation needs that arose following serious flooding in Newcastle West in August 2008.
- Financial assistance is provided to service providers who provide accommodation for Homeless persons in the County.
- New initiatives were put in place to address specific homeless issues and these include:
  - Provision of transitional accommodation in Newcastle West for a homeless person with mental health support needs
  - Engagement of Focus Ireland to work with specific families in private rented accommodation and with a family in RAS accommodation.

The Homeless Forum for County Limerick met on 3 occasions

## ESTATE MANAGEMENT.

- The Council's 'Tenant Support Document' was launched in April . This document was prepared in consultation with An Garda Siochana, The Health Services Executive and the elected representatives.
- A total of 158 tenants availed of pre-tenancy training courses.
- Improvement works continue to be undertaken in some local estates in consultation with residents. Improvement works were completed in Castleconnell Cappamore, Fedamore, Adare, Rathkeale, Abbeyfeale and Newcastle West .

The primary objective of estate management is to ensure that all residents in Local Authority estates enjoy the full benefits of their community and that issues of anti-social and criminal behaviour are dealt with. Active resident participation is viewed as being critical in achieving this and supports are provided to assist residents establish resident associations. In addition to this resident participation is assisted in NewcastleWest and Cappamore by the provision of two Community Houses which facilitates the provision of community based services.



*Launch of the  
Tenant Support  
Document*

## SERVICE INDICATORS

**H1: HOUSING VACANCIES**

A.	The total number of dwellings in local authority stock	1975.25
B.	The total number of dwellings, excluding those subject to major refurbishment projects	1973.25
C.	The overall percentage of dwellings that are empty (excluding those subject to major refurbishment projects)	4.02
D.	The percentage of empty dwellings unavailable for letting	92.11
E.	The percentage of empty dwellings available for letting	7.89

**H2: AVERAGE TIME TAKEN TO RE-LET AVAILABLE DWELLINGS**

A	The average time taken (in weeks) from the date of vacation of dwelling to the date when all necessary repairs are carried out which are deemed necessary to re-let the dwelling	27.12
B	The average time taken (in weeks) from the works (above) being completed to the date of the first rent debit	6.05

**H3: HOUSING REPAIRS**

A	Number of repairs completed as a percentage of the number of valid repair requests received	85.24

**H4: TRAVELLER ACCOMMODATION**

A	Total number of traveller families accommodated as a percentage of the targets set in the local traveller accommodation programme	35.16

**H5: ENFORCEMENT OF STANDARDS IN THE PRIVATE RENTED SECTOR**

A.	Total number of registered tenancies	5327
B.	Number of dwelling units inspected	178
C.	Number of inspections carried out	188
D.	Number of dwellings inspected as percentage of registered tenancies (i.e. B as percentage of A)	3.34

**H6: GRANTS TO ADAPT HOUSING FOR THE NEEDS OF PEOPLE WITH A DISABILITY**

A.	Average time taken (in weeks) to process applications under the Mobility Aids Grant Scheme, including any necessary inspection(s), from the date of receipt of a valid application to the date of decision on the application	21
B.	Average time taken (in weeks) to process applications under Housing Adaptation Grant for People with a Disability, including any necessary inspection(s), from the date of receipt, to the date of decision on the application	19.5

**H7: PRE-TENANCY FAMILIARISATION COURSES**

A.	Total number of new local authority tenants	194
B.	Percentage of new local authority tenants who have been offered pre-tenancy familiarisation courses	63.40



## TRANSPORTATION AND WATER SERVICES

**Paul Crowe**

*Director of Transportation and Water Services*

### ROADS

**“TO PROVIDE AND MAINTAIN A SAFE AND EFFECTIVE TRANSPORTATION NETWORK WITHIN THE COUNTY INCORPORATING THE PRINCIPLES OF SUSTAINABLE DEVELOPMENT, SOCIAL INCLUSION AND ENVIRONMENTALLY FRIENDLY WORK PRACTICES”**

#### MAJOR ROAD SCHEMES

##### Limerick Tunnel Project

Significant progress was made during the year on all elements of the Tunnel Project, including approach roads and bridges and, by year end, it remained very much on course for completion by the scheduled opening date of September 2010.

By far the most important milestone achieved was the completion of the casting of the five tunnel elements (each 100m long and weighing approximately 20,000 tonnes) in the

enormous casting basin located in Coonagh and their subsequent floating out and immersion beneath the river bed, which took place in September and October. The latter was regarded as the highest-risk phase of the works and its successful completion enables the next phase within the tunnel itself to commence on schedule i.e. installation of Mechanical, Electrical and ITS systems.

An open day was held on the 26th July to allow the public to view the tunnel elements prior to immersion and, in a clear indication of the interest that exists in this vital piece of infrastructure, an estimated crowd of 10,000 people attended on the day, surpassing all expectations.

##### N7 Nenagh to Limerick Project:

Work continued throughout 2008 on this major infrastructural project. During 2008 the Minister for Transportation designated this 36km project to motorway status. Once completed, this coupled with adjacent road schemes will constitute a continuous motorway between Limerick and Dublin.

##### M20 Cork to Limerick:

Consulting Engineers were appointed to this project in 2008 and are based in a designated project office situated in Mallow, Co Cork. A series of Public displays and consultations were held during the year culminating in a preferred route corridor for this scheme being identified. Works are continuing to develop this project towards the publication of the statutory procedures in 2009.

##### N21 Abbeyfeale to Adare:

Following the approval of the constraints study report for this project in 2008, the scheme progressed towards the identification of a number of potential route corridors. These corridors have been refined through the year. A procurement process to appoint Environmental Specialist to assist in the route selection process was also initiated.

##### Mid West National Road Design Office:

2008 saw the MWNRDO retain its prestigious CPD accreditation with Engineers Ireland and ISO 9001 accreditation with the NSAI.



*Tunnel Segment in flooded casting basin before float out*



Plassy Park Road

## MAIN ROAD WORKS PROGRAMME

### Resurfacing works carried out on the following National Roads

- Approximately 8.5kms of resurfacing works were carried out on the N21 at Abbeyfeale, N24 Grange Cross and N69 Glin to Loughill.

### Other Road Works completed in 2008

- Traffic Signals at the R521/R523 Junction at Ardagh.
- Improvements to the Junction at St. Ita's Hospital, Newcastle West.
- Improvements to the R503/R525 Newport Road
- Traffic Signals and Traffic Calming at the N24 Ballysimon Interchange with the N7 Dual Carriageway
- Plassey Park Road Improvements

## GREEN ROUTES

The R445 Dublin Road Green Route Phase I included the provision of a Green Route on the Dublin Road from Kilmurry Roundabout to the city boundary. The scheme included for a new inbound bus lane, cycle lanes, footpaths, road pavement overlay, public lighting, traffic signals, pedestrian crossings, road markings and signage.

The R445 Dublin Road Green Route Phase I has proven to be very successful to date providing safer provisions for pedestrian and cyclist and with the proposed construction of the R445 Dublin Road Green Route Phase II in 2009 the use of the Bus Corridor can be used to its full benefit.

## ROAD SAFETY REMEDIAL MEASURES

The Council provided improved road markings and signage at ten junctions on the N69 under the Road Safety Remedial Measures scheme at a cost of €60,000.

## SPECIFIC IMPROVEMENT WORKS

A grant of €3,216,000 was received for improvement works on Regional Roads.

### Low Cost Safety Improvements

A grant of €525,000 was received for Low Cost Safety Improvements at nine locations in the County. The works involved road realignment, road markings and enhanced signage.

### Surface Dressing and Reconstruction

The Council provided Surface Dressing on 22km of Regional Roads and 143km of Local Roads during the year. In addition reconstruction works were carried out on 10km of Regional Roads and 85km of Local Roads in the same period.

### Public Lighting

The number of public lights maintained by the Council is now 10,135. This is a reduction from previous years due to the transfer of the Caherdavin area to the City Council.

A sum of €100,000 was provided in 2008 from the Development Fund to upgrade existing lights and provide new lights around the county. Among the areas that improvements were carried out were, Castlemahon, Dromkeen Cross, Five Cross Roads, Murroe and Ballyagran.

### Regional Road Signposting

A grant of €250,000 was received towards the programme to enhance Signage on Regional Roads in the County which provided for signage on the R521 Newcastle West to Foynes and the R522 Newcastle West to Dromcollogher.

It is hoped to make further progress on other Regional routes in the coming year.





*Participants of the Lifesaver Project*

## ROAD SAFETY

### Lifesaver Project

The Lifesaver project is a collaborative effort between An Garda Síochána, Limerick Ambulance Service, The H.S.E. Limerick City and County Fire Service and the Road Safety Departments of Limerick County and City Councils. This programme is geared towards the senior cycle classes in all secondary schools and other appropriate groupings and is aimed at reducing the number and severity of road traffic collisions and to improve road safety awareness. All aspects of road safety were covered including, safety belts, drink and drug driving, speed, pedestrians, cyclists and fatigue.

Hundreds of secondary school students from across Limerick City and County attended the first Lifesaver event held in November 2008 and witnessed the full horror of a road crash to show them the human tragedy behind the statistics.

Actors, each portraying seriously injured traffic collision victims, were treated by emergency services during the demonstration.

Participants of The Lifesaver Project were also presented with hard-hitting road safety advertisements from around the world, personal accounts from people who have survived serious injury collisions and footage of the families of those who have died.

Emergency personnel also informed participants of their own first hand experiences at the scenes of accidents and also the follow on effects and how it changes people's lives forever.

### Cycling Safety Training

The Cycling Safety and Skills programme continued in 2008 with a total of 452 pupils participating from all over the County.

The programme includes cycling safety theory, bicycle care and practical bicycle safety and skills training.

This programme is subvented by Limerick County Council and also received support funding from the Road Safety Authority in 2008.



*Rathkeale Junior School Wardens*

### Junior School Warden Scheme

The Junior school warden scheme continued to operate successfully in Rathkeale and Ballylanders mainly due to the continued commitment from the pupils, teachers, Gardai and parents.

The Annual Junior School Warden Regional finals were held in Tarbert, Co Kerry in May 2008, with schools from Kerry, Tipperary, Clare, Limerick and Waterford taking part. Once again the Ballylanders team took second place with Kerry and Clare taking first and third places.

Congratulations to the winning teams and well done to all who participated.



*Cathaoirleach Cllr Kevin Sheehan and residents of Deel Manor planting an oak tree at Deel Manor Estate, Askeaton, Co. Limerick*

## HORTICULTURE

National Tree Week 2008 took place from 2nd to 8th March and was jointly sponsored by O2 and Coillte. Limerick County Council launched the week with the planting of an oak tree at Deel Manor Estate, Askeaton, Co. Limerick by Councillor Kevin Sheehan, Cathaoirleach. To promote this initiative, 8,000 saplings were delivered throughout the County to community groups and schools.

The Horticulture Section provided expert advice and guidance for Tidy Towns Committees and Community Councils around the County during the year. As part of this effort 30,000 bedding plants were distributed to community groups in early summer.

## GRASS CUTTING/WEED CONTROL

The grass-cutting programme continued with approximately 502 acres of open space areas cut 32 times during 2008 by the Council. This work has curtailed the spread of weeds as they are not left to go to seed.

## OTHER WORKS

In addition to the ongoing maintenance of the grounds around Council Offices, roundabouts and other public open space areas improvements were carried out at Lough Gur, Adare Park and Newcastle West Demense.

## GOLDEN MILE

The Golden Mile of Co. Limerick ran successfully again in 2008. This is sponsored by the Non National Roads Section of Limerick County Council. There were ten entries and this included two new groups. The overall winner was Knocklong Tidy Towns Association who were last year's runners up. This year's runners-up were Croom Walking Club and Crean Development. The competition was judged by Niell Foulkes, Hedgelaying Association. The awards ceremony was in December with guest

speaker Pat McAfee, expert stone mason and conservation consultant.

## HEALTH AND SAFETY

The staffing in Health and Safety was strengthened during the year. Closely working with Human Resources regarding provision of training, these new appointments facilitate the introduction and monitoring of the following national initiatives:-

- Signing, lighting and guarding of Roadworks, to ensure signage and guarding is carried out in all instances to a national regulatory standard.
- Safe System of Work Plan. A new initiative to ensure safety is properly addressed on each job prior to commencement.
- Roadworks Safety Management system for management of all aspects of safety on roadworks from planning to day to day operations.

In addition, the team provide services to ensure compliance with safety legislation in areas such as:-

- Training; In house training across an array of safety related issues for example, manual handling, on-line workstation safety training etc..
- Arranging presentations and training sessions by ESB on new code of practice, requirements for inoculations by medical specialist etc..
- Assistance in the review and updating of safety statements.
- Inspection and audit system.
- Development of procedures and checklists to make managing safety on a worksite easier and more straightforward.
- Facilitation of safety consultation and representation.
- Reporting to management on status of safety implementation throughout the organisation

## WATER SERVICES

### **“TO ENSURE THE PROVISION OF ADEQUATE WATER SUPPLIES AND WASTEWATER DISPOSAL FACILITIES IN A MANNER WHICH SAFEGUARDS THE ENVIRONMENT AND PUBLIC HEALTH AND UNDERPINS THE SUSTAINABLE DEVELOPMENT OF THE COUNTY”**

Limerick County Council's Water Services Department's aims are;

- To ensure, in as far as practicable, that each household shall have access to a potable water supply monitored in accordance with the provisions of the Drinking Water Regulations.
- To improve the wastewater infrastructure capacity throughout the County having regard to the requirements of the Water Framework Directive.
- To promote the Rural Water Programme through the provision and enhancement of water services infrastructure by private group schemes.
- To develop the provision of water services infrastructure consistent with the need for water conservation, sustainability and to meet the future demands in the County.
- To implement National and EU legislation including the Water Framework Directive.
- To develop initiatives for small towns and villages in order to accelerate the provision of Water Services infrastructure in these locations.

Whilst it is acknowledged that a need still remains to improve infrastructure in certain locations, these deficiencies are being addressed through the various capital programmes.

In association with the Health Service Executive, Limerick County Council continues to strictly monitor its water samples through the regular testing of water samples and the daily site sampling by caretakers of water supplies.

### **MAJOR CAPITAL SCHEMES**

The Council's aim is to provide water and wastewater services to existing settlements and also to ensure that infrastructural deficiencies do not hinder the growth of those settlements.

The Council receives grant assistance from the DEHLG under the National Water Services Investment Programme towards the costs of major projects. However, the Council must fund a significant portion of the capital costs of the major schemes under this programme.

### **SEWERAGE SCHEMES**

- Significant progress has been made in relation to detailed design of schemes to serve Kilmallock, Mungret, Patrickswell and Adare. The Patrickswell Sewerage Scheme was tendered in 2008 and it is anticipated that Contractors will be appointed in 2009. The Mungret Sewerage Scheme will be tendered in 2009 also.
- Preliminary Reports were completed during 2008 on projects to serve Askeaton, Foynes, Shanagolden, Glin, Athea, Dromcollogher, Hospital, Pallasgreen, Bruff and Montpelier. These Preliminary Reports have been submitted to the DOEHLG for approval.

### **WATER SCHEMES**

- The Council, in co-operation with Limerick City Council, is continuing to progress the development of trunk water mains systems into County Limerick. This will be facilitated by the upgrade of the City Council's water treatment plant at Clareville. Construction of a further element of Trunk Watermain proceeded during the year with the substantial completion of the Patrickswell-Mount Earl section.
- Planning is being progressed to serve areas of East Limerick such as Caherconlish, Cappamore, Pallasgreen, Doon and Oola. A Preliminary Report for this project was completed and submitted to the DOEHLG during 2008.

### **SMALL TOWNS AND VILLAGES INITIATIVE**

The Small Towns and Villages Initiative adopted by the Council in 2003 promotes the economic development of the County's smaller population centre and is a partnership with the private sector. The developer provides water services infrastructure in excess of his/her development requirement, the Council then makes a financial contribution and grants the developer a specified period during which anybody else wishing to avail of a connection has to reimburse the developer on a pro rate basis depending on the number of connections. Thereafter the infrastructure is transferred to the ownership of the Council.





*Upgraded Sewerage Treatment Plant in Cappamore.*

During the year short-term Operate and Maintenance Contracts are on-going at Pallaskenry, Adare and Doon and new upgraded Plants were constructed in Cappamore and Kilmallock.

## WATER CONSERVATION PROJECT

The Water Conservation Project continues to have a considerable positive impact on the delivery of water to the people of County Limerick, with 560 leaks repaired on the network in 2008.

The installation of districting metering by direct labour in conjunction with the Area Offices is now substantially complete in Annacotty and Newcastle West and is well underway in the Rathkeale and Kilmallock Areas.

The expansion of telemetry across the County has kept pace with the meter installation program which has allowed for a more rapid response to situations as they arise both in terms of leakage control and plant/scheme operations.

## RURAL WATER PROGRAMME

During 2008, a total block grant allocation of €4.786m was allocated to the Rural Water Programme from the Department of the Environment, Heritage and Local Government.

The following are the measures, which were progressed during 2008.

- **DBO Project for Group Water Supply Schemes**  
Minister for the Environment, Heritage and Local Government, Mr. John Gormley, T.D., officially marked the completion of the project at a ceremony held in the Heritage Centre at Lough Gur on the 28th March, 2008.

- **Advance and Enabling Works for the DBO Project Bundle**

A total of €302,000 was invested in Advance DBO projects during the year.

- **Refurbishment Grants to Existing and New Group Water Supply Schemes**

€714,000 was invested in refurbishment/upgrade works.

- **Refurbishment and Takeover of Group Water Supply Schemes**

A total of €1.9m was spent on takeover projects during the year. Also fifteen schemes were formally taken in charge during 2008.

## Subsidy to Group Water Supply Schemes towards operational costs

The total value of grants paid amounted to €620,879.

## Grants for Individual Well Supplies

Grants to the total value of €102,777 were paid.

## Small Capital Schemes

Projects under this heading are part funded by the DOE/HandLG and part funded by Limerick County Council. Works were undertaken on small public water and sewerage schemes.

## Rural Water Monitoring Committee

Four meetings of the committee took place and this group plays an active role in monitoring the projects adopted under the rural water programme.



Mr. Paul Crowe, Director, with Members of the Grange Burial Ground Committee who received an Award

## BURIAL GROUNDS

The Council encourages the work of the local burial ground committees by means of a grant each year. Over 110 groups who look after 169 burial ground received the grant in 2008. An awards scheme to highlight and reward groups who have shown particular commitment and initiative in following best practice in their work, with a prize giving ceremony was held in County Hall on 16th December 2008. Guest speaker on the evening, Mr. Patrick McAfee, author of "Irish Stone Walls", spoke about the need for conservation in graveyards.

### Annagh church

Limerick County Council with assistance from the DHELG Civic Structures Conservation Grant Scheme 2008 carried out extensive conservation works on Annagh church. In 2007 the west wall was propped to prevent further deterioration. The 2008 Works included the repointing, grouting and flaunching of the west wall and north and south west corners, the provision of stainless steel anchors and a local rebuild to southwest corner and north corner.



Mr. John Hayes, Kilcoleman Old Burial Ground Committee receiving an Award from Mr. Pat McAfee.



## SERVICE INDICATORS

### R1: ROAD RESTORATION PROGRAMME

#### Restoration Programme

Road Category	Restoration Improvement (Kms)	Restoration Maintenance (Kms)	Category Total (Kms)
Regional	10.12	22	32.12
Local	110	141	251
Works category total	120.12	163	
Restoration Programme Total (Kms)			283.12

#### Specific Improvement Grants

Length of Road constructed under Specific Improvement Grant 2009 (Kms)	9.5 Kms
--	---------



## ENVIRONMENT, EMERGENCY SERVICES AND CONSUMER AFFAIRS

**Gerry Behan**

*Director of Environment, Emergency Services and Consumer Affairs*

### ENVIRONMENT

**"TO PROTECT, CONSERVE AND ENHANCE THE NATURAL  
AND BUILT ENVIRONMENT OF COUNTY LIMERICK"**

#### POLLUTION CONTROL AND WATER QUALITY MANAGEMENT

The Pollution Control Division is responsible for the implementation of Local Government Environmental Legislation in the following areas: air, water, noise and nuisance. Specific activities undertaken by the section include enforcement of the European Communities (Good Agricultural Practice for Protection of Waters) Regulations 2006 (known as the Nitrates Regulations), investigation of water pollution incidents, implementation of the recommendations of the River Basin District Projects, licensing of discharges to waters and sewers, licensing of significant emissions to air, certification of dry cleaners, vehicle refinishing facilities and petrol stations under the Volatile Organic Solvents Regulations, enforcement of the Smokeless Fuels Regulations and assessing the environmental impacts of planning applications, particularly with regard to on site wastewater treatment systems. The table below summarises the activities of the section in 2008

Area of Activity	Level of activity
No. of Farms surveyed under Nitrates Regulations	362
No. of rivers sites where investigative monitoring was carried out under the water framework directive	118
No. of discharge licences issued under Water Pollution Act	8
No. of discharge licences audited	29
No. of certificates issued to vehicle refinishers, dry cleaners and petrol stations under various air pollution regulations	20
No. of Environmental Complaints investigated	85
No. of fuel outlets inspected under the smokeless fuels regulations	35
No. of planning permissions assessed for environmental impacts	654



*Eeghaun Stream, Templeglantine.*

#### ENVIRONMENT LABORATORY



*Waste water laboratory in Lissanalta House*

The Environment Laboratory monitored the following: Public and Group Water Supplies; Urban Waste Water Treatment Plants; Licensed Discharges; Rivers and Lake quality; Bathing water quality and also played a support role to Area Offices and the



Water Services Section in quality control at drinking water treatment plants.

In total, 7,160 samples were taken, analysed or assessed. In terms of our priority work area – Drinking Waters – the laboratory productivity increased by 52% with no increase in staff levels.

The laboratory worked closely with Water Services Section to refocus our work to address the needs/concerns of our customers and to comply with the drinking water regulatory requirements and the guidance of the Environmental Protection Agency for drinking water quality.

### SHANNON INTERNATIONAL RIVER BASIN DISTRICT (IRBD) PROJECT

Limerick County Council is the Contracting Authority for the Shannon IRBD Project, which was established with National Development Plan funding to assist the local authorities in the IRBD to meet the requirements of new European (Water Framework Directive) and Irish (Water Policy Regulations) legislation relating to water management.

During 2008 the main focus of the work was on the preparation and development of the draft River Basin Management Plan (RBMP) for the Shannon IRBD. The draft RBMP (called “water matters – Help us plan!”) was published on 22nd December 2008 and is open for public consultation for a six month period until 22nd June 2009. The draft plan and associated documents can be downloaded from the Project website

**www.shannonrbd.com**. Copies of the plan are also available from the Environment section of Limerick County Council or from libraries throughout the county. Also during 2008 a Digest of Responses to submissions received as part of the public consultation on the significant water management issues (called ‘water matters – Have Your Say’) in the Shannon IRBD, was published and is available to download from the Project website.

The Shannon IRBD Advisory Council was established under EC (Water Policy) Regulations, 2003 to allow for structured public participation in the development of the river basin management plan for the Shannon IRBD and is made up of elected members from each of the 18 local authorities in the IRBD, and sectoral interest groups, such as farming, business, recreational and environmental NGOs. There were five meetings of the Advisory Council held during 2008.

### LITTER MANAGEMENT

The Council’s Litter Management team continued to tackle the problems of illegal dumping, fly tipping, unauthorised signage, etc. through a combination of enforcement and awareness measures.

- A total of 1,538 complaints were investigated.
- Over 580 on-the-spot fines were issued to offenders.
- Legal proceedings were initiated under the Litter Pollution Acts in 13 cases.
- Clean-up works were undertaken at litter “Black Spots” and “No Dumping” signs were erected at sites prone to littering.
- National Spring Clean month was promoted and assistance (bags, gloves, litter pickers) were given to schools, residents’ associations, community groups, etc. Waste collected during the campaign was disposed / recycled.
- Anti-litter awareness materials including “car litter bags”, “pooper scoopers”, “re-usable shoppers”, “key rings”, etc were distributed free by Environment Section staff at community events and agricultural shows.
- Two “environmental” themed competitions were held – the “Environment Achievement Awards” and a “School Poster / Waste to Art” initiative.

### WASTE MANAGEMENT

#### Regional Waste Management Office

The region has now published the second annual report on the Replacement Waste Management Plan for the Limerick/Clare/Kerry Region 2006-2011 in October 2008. The annual report reveals that bring banks and recycling centres are pushing up the regional household recycling rate to 28% just above the national average. Prevention awareness has further influenced waste generation with another reduction in waste arising per person in the 2008 report. This office also processes Waste Collection Permit applications for the Limerick/Clare/Kerry Region. To date, the office has granted 480 waste collection permits.

The Local Authority Prevention Demonstration made continued progress in 2008 with the following diversion and prevention achievements:

- Paper consumption reduced by 15% in Limerick County Council and 32% in the University of Limerick since the project commenced in 2006.
- A 22% diversion of waste from landfill to recycling and a heightened level of awareness for tenants of the Riverpoint complex in Limerick City.

- The SkyCourt Shopping Centre is now diverting 15% of waste to compost and the recycling rate increased to 38% so now only 47% of their waste is landfilled.
- Kerry Airport are implementing a range of energy measures which will save up to 90 tonnes of greenhouse gases from being emitted and financial savings of €17k

The Local Authority Prevention Demonstration Programme will be completed by mid 2009

For 2008, the Green Hospitality Awards (formerly Green Fáilte) included silver awards for four Co. Limerick hospitality businesses.

#### OTHER HIGHLIGHTS FROM 2008:

- The forum 'Waste and Energy Minimisation – the Benefits for Business' was held on 20th May 2008.
- 'Reducing Business Waste' information brochure was published and circulated in 2008.

#### WASTE ENFORCEMENT

The Waste Enforcement Team received 558 No. waste complaints in 2008. Following investigation some complaints were resolved on site without the need to initiate enforcement action. 434 No. complaints were closed off, 213 No. warning letters and 40 No. statutory notices were issued during the reporting period. Limerick County Council successfully obtained 24 No. convictions for various offences under the Waste Management Acts 1996 - 2008.

There were 29 No. permitted sites in the County at the end of 2008. 18 No. waste permits were granted in respect of new facilities during 2008, and 18 No. permitted facilities. 14 No. permitted waste collectors were audited to ensure compliance with the conditions of their respective permits.

End of Life Vehicles continue to be a priority for the waste enforcement team. The team successfully prosecuted one of the County's biggest unauthorised operators, and prosecutions are ongoing in relation to other unauthorised sites. A total of 41 No. unauthorised sites were visited and 33 No. were closed. At the year end there were 2 No. new authorised treatment facilities in the County.

The waste enforcement team continues to target unauthorised waste activities, 3 No. aerial surveys, and 5 No. road checkpoints were carried out, in conjunction with the Gardai. 4 No. inspections were carried out in conjunction with the national TFS

office to ensure compliance with the transfrontier shipment of waste regulations. The team also worked closely with Galway County Council, Limerick City Council and Cork County Council and targeted specific unauthorised waste activities which involved out of hours surveillance. These initiatives were successful and further enforcement action and/or court proceedings are pending resulting from the combined enforcement actions.

#### FIRE SERVICE

Limerick County Fire and Rescue Service was re-accredited to the international standard ISO9001:2000 in 2008 for the Quality of its standard of Service, Delivery across all its areas of activity including fire prevention, fire and emergency operations and fire administration.

The Major Developments in the Fire Service in 2008 included:-

- the Staff Complement in all fire stations was increased from 10 to 11 (and will be increased to 12 in 2009),
- renovation to the Newcastle West Fire Station including a new roof and office extension,
- the service received delivery of a new Emergency Tender for dealing with road traffic accidents which will be based in Newcastle West and cost €400,000 to build and an aerial ladder platform used for fire fighting and rescue which will be based in Rathkeale and cost €600,000 to build,
- the Department of the Environment, Heritage and Local Government also announced a new fire station for Cappamore in its 2008 Capital Programme.



New aerial ladder platform based in Rathkeale Fire Station



New emergency tender based in Newcastle West Fire Station

- A new Major Emergency Plan was prepared for Limerick County Council in accordance with the new National Framework for Major Emergency Planning.

## VETERINARY SERVICES

Services provided by this department fall into two main categories; food safety regulatory controls and straying animals.

### FOOD SAFETY

Under contract to the Food Safety Authority of Ireland official food controls were provided in abattoirs and certain meat processing businesses located within the county. These controls included all aspects of animal welfare, food safety and animal by-product disposal as they related to the individual establishments concerned. The abattoirs processed 2,009 cattle, 6,178 sheep and 131 pigs in the course of the year. The Council worked closely with the Food Safety Authority, the Department of Agriculture, Fisheries and Food and the Environmental Health Service of the HSE during the dioxin contamination of pig-meat incident in December to ensure the immediate withdrawal of all potentially contaminated product and the certification of unaffected product back on the market.

### CONTROL OF DOGS

The dog control wardens dealt with 816 dogs; this figure includes both strays and unwanted dogs surrendered. New homes were found for 176 of these. The policy of micro-chipping all dogs being re-homed from our dog shelter during the year was continued. By agreement with Limerick City Council our wardens also provide the dog control service within the city bounds.

8,721 individual and 37 general dog licences were sold to dog owners resident in the county, and an on-line system for dog license renewal has been developed.

Nine convictions were secured following prosecutions in court for offences involving restricted breeds of dogs. These breeds include rottweilers, german shepherds, pit bull terriers and similar dogs, and are subject to special additional legal requirements.

### CONTROL OF HORSES

The horse control service seized and impounded 53 stray horses during the year. This figure includes horses found straying in a public place and also on lands owned by Shannon Development.

## BUILDING STANDARDS

The Building Standards section is responsible for enforcing the building regulations in County Limerick. Building regulations include matters such as insulation standards, access for people with disabilities and safety in a building's performance. Notable achievements in 2008 include successful enforcement action against two major builders involving over 250 houses, in which a serious public-safety issue was identified.

### DERELICT SITES

Enforcement action was continued in relation to Derelict Sites in the County. The number of movements on the register established under Section 8 of the Act was as follows:

Sites on the Register at 31st December 2007	47
Sites added during 2008	3
Sites removed during 2008	8
Sites on the Register at 31st December 2008	42

Two derelict sites were acquired compulsorily during 2008, and prosecutions were taken against owners found to be in breach of Section 11 Notices.

### CASUAL TRADING

Casual Trading is permitted at two designated areas in the County, in Newcastle West and Abbeyfeale. Trading is allowed under permit on certain prescribed days of the week in each location.





Civil Defence A.F.S. Team in training

## CIVIL DEFENCE

Limerick County Civil Defence had a very active year. Training continued throughout the County while Civil Defence personnel participated in Operational activities / Training Exercises and also provided numerous types of assistance to their local Communities.

### Training Events Included:

- Participation in National Exercise in Ringaskiddy , Co. Cork
- Avian Flu Training - Mallow
- Ex Derg – (Boat Exercise on Lough Derg)
- Annual Training Camp Lisdoonvarna /Lahinch Camp Co Clare
- Casualty Skills Weekend – Annacotty

### TRAINING LOCATIONS

First Aid, Auxiliary Fire Service (AFS), Rescue and Communication classes were carried out in the following locations: Annacotty (Occupational First Aid, Rescue, Comms and AFS), Kilmallock,(Occupational First Aid) Foynes, (Occupational First Aid) Ratkeale, (Kayaking) Doon (Auxiliary Fire Service) and Killaloe.(Boating)

### COURSES

- Local - Members completed courses and received certificates in Occupational First Aid, Intermediate and Advanced First Aid, Basic Life Support Health Care Provider, Heart Saver Automated External Defibrillator plus Marine VHF Communications.
- Civil Defence College - Members attended courses and received certification in Rescue and Casualty (Occupational First Aid (Instructors) and Emergency First Responder (Instructors), Heart Saver Automated External Defibrillator, Basic Life Support (Instructors) Health Care Provider).

### RECRUITMENT

Twelve Recruits successfully completed their Occupational First Aid Course throughout the year.

## COMMUNITY EVENTS / OPERATIONS

Civil Defence provided assistance at numerous Local, National and International events including:

Searches for missing Persons	Dawn Mass Ard Patrick
Irish Open Golf Adare	Manistar Spring Fair
All Ireland Corporate Games - UL	UL Vikings American Football
Oxygen 2008 - Punchestown	Co. Limerick VEC School Sports - UL
Oscar Traynor Cup Final - Askeaton	Go For Life Festival - UL
Heineken Cup Champions Homecoming	Ballybricken GAA- Opening New Facilities
Lough Gur Summer Festival	Athea Horse and Pony Races
Gerard McDonnell (K2 Mountaineer) Memorial Service	Limerick Diocesan Pilgrimage
Presidential visit to Askeaton	Castleconnell /Ahane Gymkhana
Cappamore Agricultural Show	Crecora Show
Limerick Women's Mini Marathon	Flooding Newcastle West
Chernobyl Children Project	Kilmallock Medieval Festival
Olympic Council Of Ireland fun day LIT	Tour of Ireland Cycle
Ras Luimini Cycle Race	Ballingarry Charity Run
St Patrick's Day Parade Askeaton	Boil Water Notice Adare
Clonshire Equestrian Centre - Hunter Trials	International Student Badminton Tournament - UL
All Ireland Horse Hunting Championships Clonshire	Milford Harvest Fair



*Civil Defence personnel on duty at The Irish Open Golf, Adare*

## WATER SAFETY

2008 was a year in which exceptionally poor weather was recorded during the summer months when outdoor bathing takes place. Nevertheless, lifeguards were employed at Glin Pier and Killeary Pier from June to September. Replacement of ringbuoys took place as required at all known hazards in the County. Assistance was provided to ensure the safety of the annual cross-river swim from Coleman's Castle in Clare to Glin Pier, which was won by Kevin Mc Hugh, a temporary lifeguard employed by the Council.



*Rough water at Glin Pier during August 2008*



*Castletroy Park*

## CORPORATE PROJECTS

- **Castletroy Park** - This 16 Acre park was completed in August 2008 and includes a children's playground, skateboard park, water pond with water feature and meandering footpaths.
- **Rathkeale Area Office - Library and Arts Office** was completed and officially opened at the end of January 2008.
- **Lissanalta House** - which houses the Mid West Road Design Office, Library HQ and Other Sections was also completed and opened in March 2008.
- **Newcastle West Fire Station and Library** - Refurbishment works were carried out. The works included installation of a new roof for the entire building and provision of new office space for the Fire Station.
- **Lough Gur** - 2008 saw the provision of new footpaths, viewing area, picnic benches and seats to the lake side area which enhances the visitor experience there.

## SERVICE INDICATORS

**E: ENVIRONMENTAL SERVICES****WATER****E.1 Unaccounted For Water**

A.	Unaccounted for water (UFW) as a percentage of total volume of water supplied under the water supply schemes that the local authority is responsible for	16.83

**E.2 Drinking Water Analysis**

A.	Percentage of drinking water analysis results in compliance with statutory requirements with regard to public schemes	-
B.	Percentage of drinking water analysis results in compliance with statutory requirements with regard to private schemes (where appropriate)	-

**WASTE MANAGEMENT****E.3 Waste Segregation**

A.	Percentage of households who receive a waste collection service and are provided with segregated waste collection for dry recyclables	99.76
B.	Percentage of households who receive a waste collection service and are provided with segregated waste collection for organics	0

**E4: Housing Waste Sent for Recycling**

A.	Percentage of household waste collected from kerbside, which is sent for recycling	23.14
B.	Tonnage of household waste collected from kerbside, which is sent for recycling	5825t
C.	Tonnage of household waste recycled, which arises from waste collected from recycling facilities (i.e. bring banks, civic amenity centres, transfer stations and other recycling facilities)	7445t

**E5: Household Waste Sent for Landfill**

A.	The percentage of household waste collected which is sent to landfill	66.05
B.	The tonnage of household waste collected which is sent to landfill	16625t

**E6: Recycling Facilities**

A.	The total number of Bring Sites in the local authority area	47
B.	The total number of Civic Amenity Centres in the local authority area	4

**Glass**

A.	The number of Bring Sites for recycling	47
B.	The number of Civic Amenity Centres for recycling	4
C.	The total number of facilities for recycling	51
D.	The number of locations for recycling per 5,000 of population	1.94



## SERVICE INDICATORS

**Cans**

E.	The number of Bring Sites for recycling	47
F.	The number of Civic Amenity Centres for recycling	4
G.	The total number of facilities for recycling	51
H.	The number of locations for recycling per 5,000 of population	1.94

**Textiles**

I.	The number of Bring Sites for recycling	19
J.	The number of Civic Amenity Centres for recycling	4
K.	The total number of facilities for recycling	23
L.	The number of locations for recycling per 5,000 of population	0.87

**Batteries**

M.	The number of Bring Sites for recycling	11
N.	The number of Civic Amenity Centres for recycling	4
O.	The total number of facilities for recycling	15
P.	The number of locations for recycling per 5,000 of population	0.57

**Oils**

Q.	The number of Bring Sites for recycling	0
R.	The number of Civic Amenity Centres for recycling	3
S.	The total number of facilities for recycling	3
T.	The number of locations for recycling per 5,000 of population	0.11

**Other materials**

U.	The number of Bring Sites for recycling	8
V.	The number of Civic Amenity Centres for recycling	4
W.	The total number of facilities for recycling	12
X.	The number of locations for recycling per 5,000 of population	0.46

**LITTER****E7: Litter Prevention and Enforcement**

A.	Number of full-time litter wardens	3
B.	Number of part-time litter wardens	18
C.	Number of litter wardens (both full- and part-time) per 5,000 population	0.80
D.	Number of on-the-spot fines issued	583
E.	Number of on-the-spot fines paid	304
F.	Number of prosecution cases taken because of non-payment of on-the-spot fines	13
G.	Number of prosecutions secured in cases taken because of non-payment of on-the-spot fines	4
H.	Number of notices issued (under sections 9, 15, 16, 17 and 20 of the Litter Pollution Act 1997)	0
I.	Total number of prosecutions taken (all prosecutions under the Litter Acts 1997 to 2003)	13
J.	Total number of prosecutions secured (all prosecutions under the Litter Acts 1997 to 2003)	4

## SERVICE INDICATORS

K.	Percentage of areas in the local authority that are unpolluted (i.e. litter-free)	-
L.	Percentage of areas in the local authority that are slightly polluted with litter	-
M.	Percentage of areas in the local authority that are moderately polluted with litter	-
N.	Percentage of areas in the local authority that are significantly polluted with litter	-
O.	Percentage of areas in the local authority that are grossly polluted with litter	-

### E8: Environmental Complaints and Enforcement

A.	Total number of cases subject to complaints concerning environmental pollution (relating to waste, litter, water pollution, noise pollution, air pollution)	2644
B.	Number of complaints investigated	2329
C.	Number of complaints resolved where no further action was necessary	1926
D.	Number of enforcement procedures taken	1298

### E9: Percentage of schools participating in environmental campaigns

A.	Percentage of primary schools participating in environmental campaigns	75.22
B.	Percentage of secondary schools participating in environmental campaigns	90.91

## F: FIRE SERVICE

### F1: Fire Service Mobilisation

A.	Average time taken, in minutes, to mobilise fire brigades in Full-Time Stations in respect of fire	-
B.	Average time taken, in minutes, to mobilise fire brigades in Part-Time Stations (retained fire service) in respect of fire	4.42 mins
C.	Average time taken, in minutes, to mobilise fire brigades in Full-Time Stations in respect of all other emergency incidents	-
D.	Average time taken, in minutes, to mobilise fire brigades in Part-Time Stations (retained fire service) in respect of all other emergency incidents	4.60 mins

### F.2 Percentage of attendances at scenes

A.	Percentage of cases in respect of fire in which first attendance is at the scene within 10 minutes	35.92
B.	Percentage of cases in respect of fire in which first attendance is at the scene after 10 minutes but within 20 minutes	45.98
C.	Percentage of cases in respect of fire in which first attendance is at the scene after 20 minutes	18.10
D.	Percentage of cases in respect of all other emergency incidents in which first attendance is at the scene within 10 minutes	37.70
E.	Percentage of cases in respect of all other emergency incidents in which first attendance is at the scene after 10 minutes but within 20 minutes	44.59
F.	Percentage of cases in respect of all other emergency incidents in which first attendance is at the scene after 20 minutes	17.70

### F.3 Fire Prevention

A.	Total number of fire safety certificate applications received	157
B.	Total number of fire safety certificate applications processed (including cases deemed invalid)	173
C.	Total number of applications deemed invalid	8



## COMMUNITY AND ENTERPRISE, HUMAN RESOURCES AND CORPORATE SERVICES

**Josephine Cotter Coughlan**

*Director of Community and Enterprise, Human Resources and Corporate Services*

### COMMUNITY AND ENTERPRISE

**“TO IMPROVE THE QUALITY OF LIFE OF THE PEOPLE OF LIMERICK THROUGH SUPPORTING THE PROVISION OF SOCIAL, COMMUNITY, CULTURAL AND RECREATIONAL INITIATIVES AND FACILITIES IN ORDER TO ENSURE A HEALTHY AND VIBRANT COMMUNITY”**

#### GRANT AND CONTRIBUTION SCHEMES

- provide financial assistance for the development of community, recreational, sporting, environmental and cultural facilities in the county
- Designed to encourage equal accessibility, the removal of barriers and provision of facilities

**Village Renewal Scheme and Community Sports and Cultural Grant Scheme** – assist community based clubs and voluntary organisations as well as providing an extra resource to the Council to assist in the provision of facilities that might not be otherwise funded.

Type of projects eligible for funding under the grant schemes are – specific facilities required by an organisation addressing the needs of disadvantaged groups; halls and meeting rooms; sports facilities; parks; amenity areas; arts projects.

#### ANNUAL CONTRIBUTION SCHEME

- Provides financial assistance towards the activities of various bodies
- Traditionally the scheme is used to support a number of special interest tourism, arts or cultural projects/facilities in our towns as well as some facilities/services in the City and Environs which have a regional significance.

Organisations involved in providing services to youth or in such areas as animal welfare, marine rescue, disability, conservation and recreation/amenity have all been previous beneficiaries from the fund. The amount provided for operation of the Scheme in 2008 was €210,000.

#### TWINNING

Throughout 2008 a number of twinning exchanges took place between Limerick County Council and some of its sister cities as follows:

- A delegation of 8 officials and representatives from Gdansk in Poland visited County Limerick from the 17th to 21st June 2008. The overall theme of the programmes was “Innovation”.
- From the 7th to 10th May 2008 a delegation of councillors and officials from Limerick County Council travelled to Hohenlohe County, Germany. This visit celebrated 20 years since the inaugural visit to Hohenlohe back in 1988.
- On the 1st May 2008 a delegation from New Brunswick, USA visited County Limerick. As part of the itinerary, the delegation met with Martin Wallace, Principal of Castletroy College, to discuss the possibility of future exchanges between Castletroy College and New Brunswick High School.

### LIMERICK COUNTY DEVELOPMENT BOARD

#### SOCIAL INCLUSION MEASURES COMMITTEE ACTIVITIES

##### Joint City and County Integration Working Group

A joint Integration Working Group was established and it identified an information gap concerning both the experiences of ethnic minorities in accessing local services and the current delivery of services. An Integration Plan was drafted to identify and document the issues, challenges and opportunities experienced in delivering services in Limerick City and County. The resulting Integration Plan will have recommendations and actions for implementation by various public agencies.

##### Interagency Steering Committee for Delivery of Services to Travellers

Funding was granted by Pobal for a number of initiatives including

1. Social Integration of Traveller Women and Children through physical activity and Sport.
2. Support Local Schools through School Completion Projects for placement of students from Transition Year and Leaving Certificate Applied.
3. Information Sessions on local services in Kilmallock, Newcastle West and Abbeyfeale.
4. Askeaton Community Relations Project.



5. Educational Development and Leadership.
6. Rathkeale Integration Initiative.
7. Multicultural Awareness Training.

## DISABILITY SUB-GROUP

- Disability Fairs were held in conjunction with the Disability Federation of Ireland, Limerick City and County Councils
- Directory of Services for the Kilmallock area was substantially completed.

## TOURISM ACTIVITIES

- A Tourism Forum established with Shannon Development/Representation from the tourism trade/local Development Companies. Brand name and logo developed and a new website domain name has been registered "Discover Limerick.ie"
- The Council was awarded capital funding under Fáilte Ireland's Tourism Product Development Scheme for a number of projects.

## TIDY TOWNS

Two new Tidy Towns initiatives were launched.

- Priming Grant – to assist people with the cost of purchasing trees, shrubs, street furniture etc.
- Limerick in Bloom Competition – sponsored by Shannon Development. Concept of promoting community involvement in the improvement and enhancement of the local environment.

## PLAYGROUNDS

- Two new playgrounds at Abbeyfeale and Askeaton were completed,
- Community Playground Grant Scheme launched

## MINI-PITCHES

Pitches at Abbeyfeale, Cappamore, Hospital, Rathkeale and Patrickswell were substantially complete by the end of the year.



*Concentration and teamwork is the name of the game*

## COUNTY LIMERICK LOCAL SPORTS PARTNERSHIP

- Local Sports Partnership Sports Strategy 2008-2011 and Action Plan for 2009 launched.
- Implementation of the Buntús training and equipment programme in 75 primary schools and also the Buntús Start programme in 55 childcare providers.
- Programmes were introduced aimed at increasing participation in physical activity for target groups i.e. teenage girls, older adults and disadvantaged communities.
- 600 coaches and volunteers attended numerous training and education courses throughout the year in Continuous Professional Development.
- Clubs and community groups availed of €15,000 in education and training grants



*Knocklong and Glenbrohane teachers are well equipped for play- courtesy of the LSP Buntus programme*

## PRIDE OF PLACE

Four communities represented County Limerick in the Co-Operation Ireland Pride of Place Competition. Cappamore won its population category, while Dawn Court Day Care Centre, Athlacca, came second in the Care of the Elderly category.

Eureka

## COMMUNITY, SPORTS AND CULTURAL FACILITIES AUDIT

Audit undertaken of community, sports and arts facilities in County Limerick on behalf of the Department of Environment, Heritage and Local Government and the Department of Arts, Sport and Tourism. Data was compiled on over 300 facilities in the county.

## COMHAIRLE NA nÓG

- Comhairle na nÓg was held in November – with a total of 55 representatives from secondary schools and youth groups in the county
- Topics discussed were “Anti-Social Behaviour in Young People” and “Health”
- The following five delegates elected to represent County Limerick at Dáil na nÓg 2009 - Jason Dundon, Séan Gardiner, James Hough, Sarah O’Meara and Orla Joyce.

## LIBRARY

### LIBRARY SERVICE: HIGHLIGHTS 2008

- Launch of extended and refurbished Rathkeale library
- Official opening of new Library HQ and Limerick Studies at Lissanalta House
- Summer Reading Challenge in Dooradoyle with over 400 children taking part.



Limerick Studies at Lissanalta House



- Series of Climate Change Workshops in conjunction with Sustainable Energy Ireland
- Eanna Ní Lamhna visit and Knockfierna Rambling House session in Newcastle West as part of Seachtain na Gaeilge in March
- Launch by Cathaoirleach, John Gallahue of the Library’s Assistive Technology Service, a range of hardware and software, which allows easier access to library services for those with disabilities



Noreen O'Neill, Executive Librarian, demonstrates the technology to Tristan Dryden and Kevin Donovan

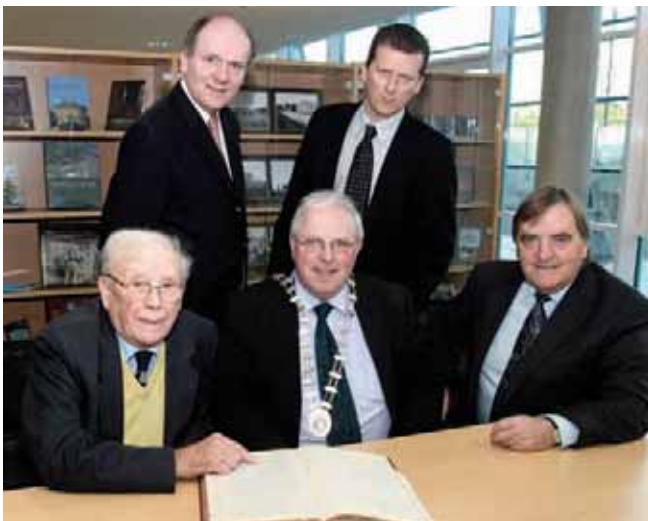
- Bealtaine Festival of Age and Opportunity hosted in Foynes, Newcastle West and Dooradoyle.
- Over 40 events countywide to celebrate Children’s Book Festival





*Turkish delegation at Dooradoyle Library*

- Visit of a delegation of Turkish Information Managers to the Europe Direct Service in Dooradoyle library
- Presentation of Limerick County Committee of Agriculture Archive to Limerick Studies



*Cathaoirleach, John Gallahue accepting a County Committee of Agriculture minute book from Fachtna O'Driscoll, CAO Teagasc. Also included are John McNamara former CAO, Teagasc, Damien Brady and Tony Storan*

## SERVICE INDICATORS 2008

Registered readers:	19,064
Books issued:	348,156
Visits to libraries:	353,721
(Dooradoyle, Newcastle West, Adare, Abbeyfeale, Rathkeale, Foynes, Limerick Studies)	
Hours of Internet use:	29,224
Exhibitions:	32
Cultural/Civic Events:	144
New titles added to stock:	41,095



*'Big Sing' poster designed by Ballybrown school Children)*

## COUNTY ARTS OFFICE

The County Arts Office programme maps the county with a programme that is inclusive in nature and wide ranging in arts discipline. Each week the County Arts Office organised on average 2 to 4 night time events and 3 to 4 day time projects and events some of which are highlighted below:

- **Integrated Dance Programme** – participants included residents of Rathfredagh Cheshire Home, Irish Wheelchair Association, transition groups from 5 schools and UL PE students.
- **Music Programme** - Spread across the county with women's community singing group in Foynes, classical concert series in Castleconnell and the County Limerick Youth Choir drawing young people from all over the county. The 'Big Sing' programme which was co organised by the Arts Office and the UL Concert Hall outreach programme involved 30 Primary Schools with approximately 1,000 children from 5th and 6th classes.
- **Literature Programme** – Included the hosting of Éigse Michael Hartnett Literary and Arts Festival now a national literary event. In our Poet in Residence programme, 12 primary schools, 4 post primary schools and 1 Youth



*Lough Gur branch of Youth Theatre on stage)*



Reach Centre participated. Also creative writing groups were hosted in Glenstal and Kildimo and fortnightly poetry evenings hosted in Newcastle West.

- **Youth Arts Programme** – Included the two branches of County Limerick Youth Theatre of Lough Gur and Abbeyfeale participating in national drama weekend in Cork and in Lough Gur Storytelling Festival.
- **Other programmes** - Included Arts for primary schools, arts intervention in the Regional Maternity Hospital, arts for older people, International Women's Day Centenary event, amongst others.

## HUMAN RESOURCES

**"TO ENABLE, ENCOURAGE AND SUPPORT OUR COUNCILLORS AND EMPLOYEES TO PERFORM, CONTRIBUTE AND DEVELOP TO THEIR FULL POTENTIAL"**



*Members of the Project Team - HR/Payroll/Superannuation System*

The main achievements in Human Resources during the year are as follows:-

### HR/Payroll/Superannuation System

- Project Team was assembled and work concentrated on clarifying organisation structure and data collection. The system went live with Organisation Structure Module in December 2008. Limerick County Council, jointly with Kerry County Council are now the lead authorities in the Superannuation Module which is due to go live in the 2nd quarter of 2009. Major reviews of policies and procedures were undertaken as part of the implementation process.

### Training and Development

- A sum of €600,000 was spent on the delivery of training to staff and councillors – major areas include Health and Safety, Emergency Services and Water Services etc.

### Organisational Change

- Staff redeployments, re-organisation of the water services business area, involvement of staff in community based initiatives e.g. Junior Achievement, school visitations by Fire Service personnel, dress code introduced,

## CORPORATE SERVICES

**"TO SUPPORT AND ENHANCE THE DEMOCRATIC ROLE OF THE COUNCIL AND TO DEVELOP, CO-ORDINATE AND PROMOTE A CORPORATE CULTURE AND BUSINESS ETHOS WITHIN THE ORGANISATION"**

The Corporate Services Department covers a wide range of services in addition to providing Management Support Services. The Department deals with areas such as Higher Education Grants, Register of Electors, Freedom of Information, Customer Services, Purchasing and a wide variety of ancillary services relating to Council business.

## GENERAL ADMINISTRATION

### HIGHER EDUCATION GRANTS

Limerick County Council continues to administer the Higher Education Grant scheme. 480 new applications were received for the academic year 2007/2008 and in excess of 900 renewals were processed. Total expenditure amounted to over €4m and this includes an amount of €442,123 that was paid out as Special Rate of Maintenance Grants. A total of 149 students were awarded Special Rate of Maintenance Grants in 2007/2008.

### REGISTER OF ELECTORS

The Register of Electors is updated and produced annually and comprises a list of all persons over the age of 18 years resident in the County who are entitled to vote in Elections to the Dáil, the European Assembly, Presidential and Local Elections and Referenda. The publication date for the Register of Electors is 1st February and the Register comes into effect on the 15th February each year. A Supplement to the Register of Electors 2008/2009 was compiled for the Referendum on the Lisbon Treaty in June 2008.

In 2008, the Minister for the Environment, Heritage and Local Government, Mr John Gormley signed the County of Limerick Local Electoral Areas Order which revised the 5 local electoral areas in the county. The 5 revised local areas will from the 2009-2010 Register of Electors be as follows, and the revised number of seats are outlined below. These will be in effect for the Local-European Elections in June 2009.

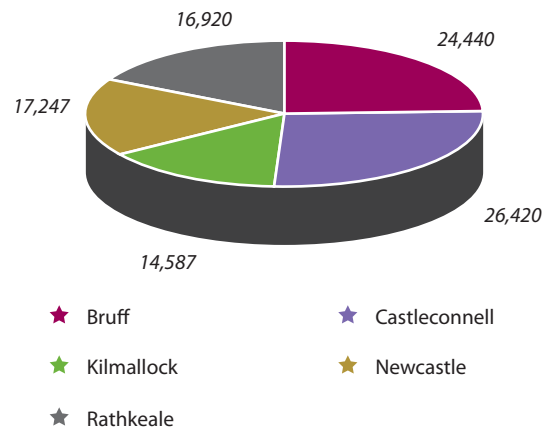
Adare	7 Seats
Castleconnell	7 Seats
Newcastle	5 Seats
Kilmallock	5 Seats
Rathkeale	4 Seats

The revised Dáil constituency boundaries will become effective for the next General Election. This will create 3 new Dáil constituencies in County Limerick where there are currently 2, Limerick East and Limerick West. The new constituencies are as follows and the number of Dáil Seats in each-

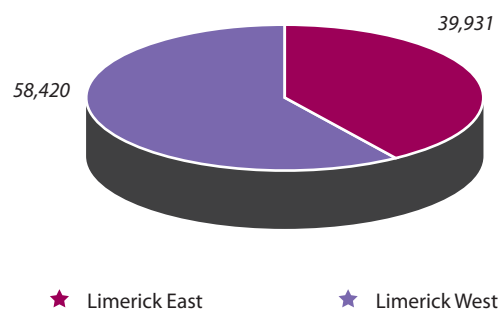
Limerick City	4 Seats
Limerick	3 Seats
Kerry North/West Limerick	3 Seats

### Local Government Electorate

The Local Government Electorate stands at 99,614 on the Live 2008/2009 Register of Electors published in February 2008.



The Dáil Electorate stands at 98,351 on the Live 2008/2009 Register of Electors as at February 2008 broken down as follows-



In March 2008, the Limerick City Boundary Alteration Order came into effect. This transferred 5,100 electors from the Limerick North Rural Electoral District comprising the townlands of: Clonmacken, Caherdavin, Knock, Shanabooley, Ballygrennan, Clonconane, Clondrinagh, Coonagh East and Coonagh West to the administrative area of Limerick City Council from Limerick County Council.

Members of the public can check if they are registered correctly on the Electoral Register on [www.lcc.ie](http://www.lcc.ie) (Register of Electors Online Enquiries). If your details are incorrect or you are not registered, please apply for an application form to [electoralregister@limerickcoco.ie](mailto:electoralregister@limerickcoco.ie).

## FREEDOM OF INFORMATION (FOI)

During 2008 there were 25 FOI requests (24 valid and 1 withdrawn) and 4 internal reviews.

The FOI Act 1997 as amended established three new statutory rights:

- for each person to access information held by public bodies.
- for each person to have official information relating to him/herself amended where it is incomplete, incorrect or misleading.
- to obtain reasons for decisions affecting oneself.

The Act gives right of access (subject to exemptions) to:

- all records created after commencement of this Act for Local Authorities i.e. 21st October 1998
- such records created before that date as may be required to understand records created after commencement of the Act.
- Personal records regardless of when created.
- In the case of staff members, personnel records created from a date 3 years before commencement of the Act.

A standard application fee of €15 must accompany an FOI request for a record or records containing non-personal information. A reduced fee of €10 applies if the person making such a request is covered by a medical card and supplies certain details.

The Freedom of Information Acts set out appeal mechanisms in the event of a refusal of a request, or in relation to deferral of access, charges, form of access etc., There are also fees payable in certain cases on appeal.

## INTERNAL AUDIT

The Internal Audit Section is an independent function that reviews the systems, procedures and internal controls in place throughout the Council. These reviews are carried out in order that management can have confidence in the systems and control procedures they have put in place.

The County Checker operates within the internal audit function and carries out a continuous audit of financial transactions in areas such as revenue collection, cash receipting and motor tax collection.

The Council's Audit Committee, which is comprised of 3 external members and 2 current/retired Councillors, maintain an overview of corporate governance on the organisation. The committee met 5 times during the year.



## WORKPLACE PARTNERSHIP

Workplace Partnership has been ongoing throughout 2008 with progress on the Local Action Plan listed as follows:

- Handling Significant Change Forum – established on the 4th November 2008.
- Projects funded by LANPAG and delivered locally included Customer Service Training, Health Screening – inoculation programme for employees in the Water Services Sector, Transitioning Back to the Workplace training for temporary staff, whose contracts were not being renewed in 2009.
- A dress code for all staff was circulated to all staff in December 2008 with an effective date of the 1st January 2009.
- A Draft Communication and Consultation Protocol was considered by the Council's Management and Trade Union representatives in December 2008.
- Formation of a new working group for the Water Services – Staff Welfare Facilities
- Working groups – Personal Protective Equipment and Public Private Partnership meetings held at regular intervals throughout 2008.
- Completion and submission of the Performance Verification Report (PVG) and participation in the Performance Verification Group Site visit in Cork on the 29th April 2008
- Training delivered to Trade Union Staff representatives in November 2008
- Return to Learning programme – is ongoing with Level 1, Level 2 and Supervisors course delivered in 2008

## SERVICE INDICATORS

**C: CORPORATE ISSUES****C.1 Working Days lost to Sickness**

A.	Percentage of working days lost to sickness absence through certified leave	3.19
B.	Percentage of working days lost to sickness absence through uncertified leave	0.45

**C.2 Staff Training and Development**

A.	Expenditure on Training and Development as a percentage of total payroll costs:	4.69

**L: LIBRARY SERVICES****L.1 Library Public Opening Hours**

A.	Average number of opening hours per week for full-time libraries	38
B.	Average number of opening hours per week for part-time libraries (where applicable)	11
C.	Percentage of full time libraries that have lunchtime openings	75
D.	Percentage of full time libraries that have evening openings	100
E.	Percentage of full time libraries that have Saturday openings	100

**L.2 Library Visits**

A	Number of visits to full time libraries per 1,000 population	2770.01
---	--	---------

**L.3 Library Stock**

A.	Annual expenditure on stock per head of population (county/city wide)	3.34
B.	Number of items issued per head of population (county/city wide) for books	2.49
C.	Number of items issued per head of population (county/city wide) for other items	0.16

**L.4 Internet Access through Libraries**

A	Number of Internet sessions provided per 1,000 population	26.45

**REC: RECREATIONAL SERVICES****Rec.1 Children's Playgrounds**

A.	Number of children's playgrounds per 1,000 population directly provided by the local authority	0.04
B.	Number of children's playgrounds per 1,000 population facilitated by the local authority	0

**Rec.2 Local Authority-Facilitated Leisure Facilities**

	Number of visitors to local authority-facilitated leisure facilities per 1,000 population	241.80
--	---	--------

**CP: COMMUNITY PARTICIPATION****CP.1 Participation in local Youth Council/Comhairle na n-Og scheme**

	Percentage of local schools and youth groups involved in the local Youth Council/ Comhairle na n-Og scheme	37.50
--	--	-------

**CP.2 Groups registered with the Community and Voluntary Forum**

	Number of groups registered with the Community and Voluntary Forum	1665
--	--	------





## PLANNING AND DEVELOPMENT

**Tom Enright**

*Director of Planning and Development*

### PLANNING AND DEVELOPMENT

The objective of Limerick County Council's Planning Department is to adopt a positive approach to balanced economic development through the proper planning and sustainable development of the County. The planning Department continues to place an emphasis on the development of lower density, high quality residential developments in larger towns and villages and to promote the provision of serviced residential sites.

The Planning Department aims to ensure that

- all developments permitted in County Limerick are designed to the highest quality standards thereby providing balance and sustainability within the County;
- to provide an efficient, accessible, and transparent service to all our customers.

#### CORE ACTIVITIES

The Planning Department has responsibility for implementing the provisions of the Planning and Development Act 2000-2007 and the Planning and Development Regulations 2000-2008. This includes:

1. The preparation and review of the Development Plans/ Local Area Plans
2. The consideration of applications for planning
3. The control of development and the enforcement of planning legislation
4. Giving advice on planning matters to the public and other Council Departments
5. The promotion of development in the county
6. The promotion of economic and tourist activity

#### HIGHLIGHTS IN 2008

- Adoption of a new Development Contribution Scheme
- Adoption of a new Taking in Charge of Estates Policy
- Preparatory work on the Review of the County Development Plan

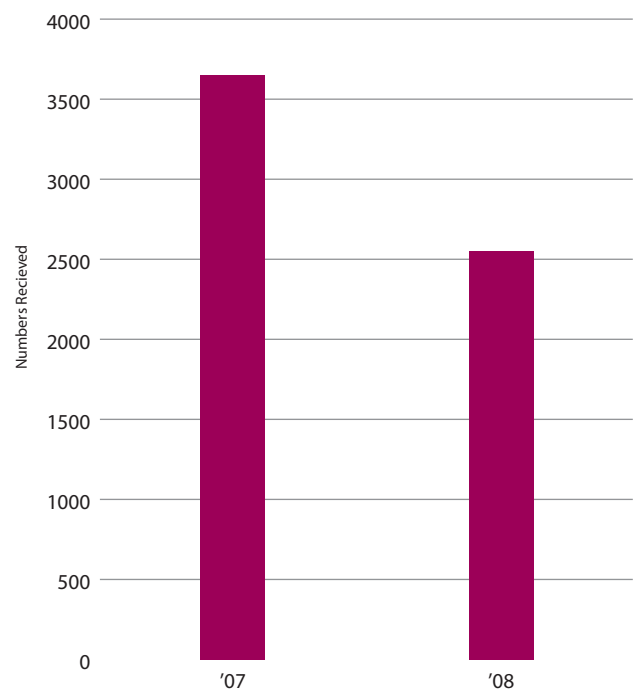
- Continuing review and adoption of Local Area Plans
- Processing of 2551 Planning applications
- Holding of 974 pre planning meeting and reduction of waiting time to 8 days.
- Publication of Brochure promoting Limerick County Council's Policy on Residential Serviced Sites in Towns and Villages

#### DEVELOPMENT MANAGEMENT

The Development Management Section is responsible for processing all planning applications in accordance with the Planning and Development Act 2000 -2007 and the Planning and Development Regulations 2000-2008.

During 2008 Limerick County Councils Planning Authority processed a total of 2551 applications, approx 48 applications per week.

**Planning Applications 2007-2008**



★ Applications Received

2008 saw a 31.2% decrease in the number of applications received by the Planning Authority on 2007 figures.

This mirrors the trend across all local authorities and reflects the downturn in construction activity in the economy.

## KEY PLANNING STATISTICS

- 2551 planning applications were received by Limerick County Council in 2008
- The number of applications granted was 1580 and the number of applications refused was 305, giving a grant rate of 83.82% and a refusal rate of 16.18%.
- 725 planning applications for one off houses and 81 housing development were decided in 2008
- An Environmental Impact Statement was submitted with 6 applications.
- Of the 78 decisions by the Council appealed to An Bord Pleanála, 58 were upheld by the Board giving a confirmation rate of 74%.

## COUNTER SERVICE

Planning Staff continued to provide the 'Over the Counter' validation service saving valuable time for members of the public who availed of the service. This service reduces the number of invalid applications as well as reducing costs and time delays to the applicant.

## PRE PLANNING

Pre planning consultations are an integral part of the Development Management process. These meetings are held to provide a higher quality and more transparent planning service to the general public. In 2008, 974 pre planning meetings were held to facilitate discussions with potential applicants on the issues associated with their proposals. This reflects a significant increase on the number of meetings held in 2007. Also the waiting time for these meetings was reduced to 8 calendar days in 2008.

## WEBSITE

The website provides a wide variety of useful information in relation to the planning process, including the facility to download forms and guidance notes etc. Also available on the website is the Planning Newsletter. Two Planning Newsletters were published in 2008 outlining the current planning issues for Planning Agents and the general public. In 2008 the Planning website received 308,387 hits.

## FORWARD PLANNING

### Limerick County Development Plan 2005-2011

The County Development Plan is a six year development plan for the county which sets out the overall strategy for the proper planning and sustainable development of the county for that period. As the County Development Plan is due to expire in 2011, preparatory work on the review of the plan commenced in late 2008.

### Variation to County Development Plan 2005-2011

A variation to the County Development Plan was adopted in December 2008 to provide for an amendment in relation to the M20 Cork to Limerick Motorway Scheme.

## Local Area Plans

In accordance with the Planning and Development Act 2000-2007 a Planning Authority may prepare Local Area Plans for any area within its functional area and must produce a plan for areas with a population of 2,000. The purpose of a Local Area Plan is to establish a framework for the planned, coordinated and sustainable development of the area in question. The plan outlines the planning policies and objectives for the area and all planning applications for this area will be measured against the contents of the plan. During 2008 local area plans for Abbeyfeale, Caherconlish, and Newcastle West were adopted. Reviews were also commenced for Adare, Askeaton, Castletroy, Fedamore, Kilmallock, Montpelier, and Patrickswell.

## Village Design Statement

A village design statement was prepared for Murroe in 2008. Whilst this is not a statutory document it will supply planning guidance for anyone wishing to develop in the village of Murroe.

## UK NATIONAL TRANSPORT AWARDS

Limerick County Council were shortlisted in the category "Walking and Public Realm" for the National Transport Awards Scheme for its Urban Renewal scheme at Kilfinane. Cllr Eddie Creighton, Gerry Sheeran, Senior Planner and Michael Griffin, Administrative Officer attended the awards ceremony at the Grosvenor House Hotel in London where the awards were presented by Ruth Kelly, MP, Secretary of State for Transport.

## TAKING IN CHARGE POLICY

The Council adopted a Policy on Taking in Charge of Residential Developments in July 2008.

- The policy sets out the procedures to be followed when making an application for the take over of estates and outlines the facilities to be taken in charge and the Council's policy in relation to maintenance of services.
- The policy provides for an "inspection as you go procedure" which was developed in consultation with the Construction Industry Federation.
- This new process will provide for the take over of estates at an early stage as the estates are completed and ensure that roads, services, open space, etc taken in charge are completed satisfactorily and free from major defects.

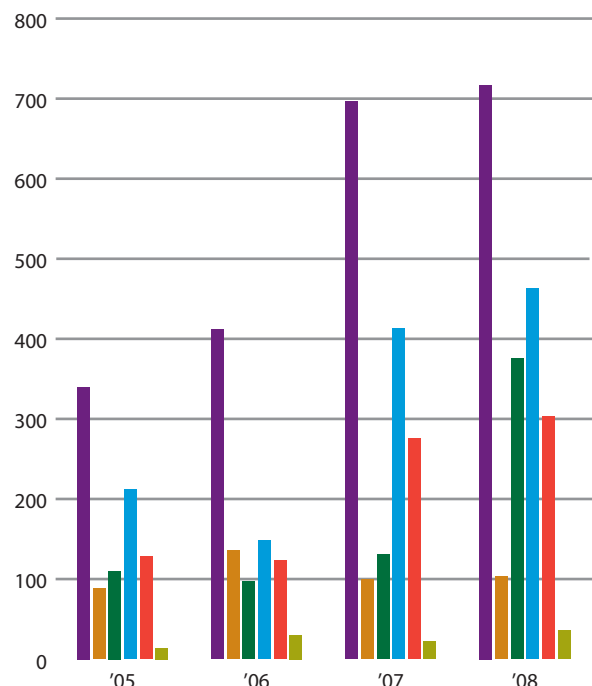
## ENFORCEMENT

In accordance with our statutory requirements under the Planning and Development Act 2000, the Planning Authority seek to ensure that all development is carried out in accordance with planning permission granted and to take the appropriate enforcement procedures for all unauthorised development. There was once again significant activity in this area in 2008 as highlighted by the following statistics.

- 717 complaints received
- 463 Warning Letters issued
- 303 Enforcement Notices
- 36 files were referred for legal action in 2008.

The following graph shows the activity in this area from 2005-2008.

Enforcement Activity 2005-2008



- ★ Complaints Received
- ★ Complaints Dismissed
- ★ Complaints Resolved
- ★ Warning Letters Issued
- ★ Enforcement Notices Issued
- ★ Prosecutions

## DEVELOPMENT CONTRIBUTIONS

A new Development Contribution Scheme covering the period 2009 - 2013 was approved by the Council on the 24th of November 2008 and came into effect on the 1st of January 2009.

The Development Contribution Scheme 2009-2013 provides that the level of contributions remain the same as the existing 2003 Scheme, with the exception of the rates of contribution for 'Manufacturing Development' which are reduced by 50%.



Abbeyfeale Playground

The following are a summary of changes to the Current Scheme:

- Rate of Contribution for Manufacturing Development has been reduced by 50%
- Rate for all remaining categories remain the same as the Current Rates

DEVELOPMENT CONTRIBUTION SCHEME 2003	
Monies Received in 2008 in accordance with 2003 Development Contribution Scheme	€12.9m
Actual Monies Outstanding relating to 2008 in accordance with Development Contributions Scheme 2003	€5,249,790
Development Fund Expenditure 2008	€20.27 million

Development Fund Allocations 2003 Scheme – 3 year multi annual programme approved for 2007-2009 . (2008 summary)

SUMMARY CHART ALLOCATIONS 2008			
No.	Programme	Total Allocation 2008 €m	Percentage Allocation
1(a) and (b)	Water Services and Small Towns and Village Initiatives	€6.600	30%
2	Community and Enterprise	€4.400	20%
3	Transportation	€11.000	50%
Total Allocation		€22.000	100%



St. Nessans Road, Dooradoyle.

The projects which received approval for funding from the Development Fund in 2007-2009 included :

- Clarina Sewerage Collection System € 0.5 m
- Ballyorgan STP € 0.175m
- Annacotty Newtown Scheme Phase 2 € 1.5 m
- Monaleen Road Phase 1 € 1.3 m
- Askeaton Swimming Pool € 0.4 m
- Kilmallock Sewerage Scheme € 1m
- Community Sport Cultural Grant Scheme € 1.6 m
- 300k per area for road schemes € 1.5 per annum

Projects which received funding from the Development Fund in 2008 included:

- Abbeyfeale Playground
- St. Nessans Road, Dooradoyle
- Castletroy Park.



Castletroy Park



## SERVICE INDICATORS -2008

**P: PLANNING****P.1 Planning Applications - Decision Making****Individual Houses**

A.	Number of applications decided	725
B.	Number of decisions in Column A which were decided within 8 weeks	243
C.	Number of decisions in Column A which required the submission of further information	450
D.	Number of decisions in Column A where an extension of time was agreed to by the applicant, under section 34(9) of the Planning and development Act 2000	33
E.	Average length of time taken (in days) to decide an application where further information was sought	80
F.	Percentage of applications granted	77.79
G.	Percentage of applications refused	22.21
H.	Percentage of cases where the decision was confirmed, with or without variations, by An Bord Pleanala	82.14
I.	Percentage of cases where the decision was reversed by An Bord Pleanala	17.86

**New Housing Development**

A.	Number of applications decided	81
B.	Number of decisions in Column A which were decided within 8 weeks	24
C.	Number of decisions in Column A which required the submission of further information	53
D.	Number of decisions in Column A where an extension of time was agreed to by the applicant, under section 34(9) of the Planning and development Act 2000	5
E.	Average length of time taken (in days) to decide an application where further information was sought	81
F.	Percentage of applications granted	65.43
G.	Percentage of applications refused	34.57
H.	Percentage of cases where the decision was confirmed, with or without variations, by An Bord Pleanala	83.33
I.	Percentage of cases where the decision was reversed by An Bord Pleanala	16.67

**Other: not requiring Environment Impact Assessment**

A.	Number of applications decided	1073
B.	Number of decisions in Column A which were decided within 8 weeks	619
C.	Number of decisions in Column A which required the submission of further information	442
D.	Number of decisions in Column A where an extension of time was agreed to by the applicant, under section 34(9) of the Planning and development Act 2000	14
E.	Average length of time taken (in days) to decide an application where further information was sought	78
F.	Percentage of applications granted	89.56
G.	Percentage of applications refused	10.44
H.	Percentage of cases where the decision was confirmed, with or without variations, by An Bord Pleanala	65.71
I.	Percentage of cases where the decision was reversed by An Bord Pleanala	34.29

**Other: requiring Environment Impact Assessment**

A.	Number of applications decided	6
B.	Number of decisions in Column A which were decided within 8 weeks	4
C.	Number of decisions in Column A which required the submission of further information	2
D.	Number of decisions in Column A where an extension of time was agreed to by the applicant, under section 34(9) of the Planning and development Act 2000	0
E.	Average length of time taken (in days) to decide an application where further information was sought	81.00
F.	Percentage of applications granted	33.33
G.	Percentage of applications refused	66.67
H.	Percentage of cases where the decision was confirmed, with or without variations, by An Bord Pleanala	66.67
I.	Percentage of cases where the decision was reversed by An Bord Pleanala	33.33

**P.2 Planning Enforcement**

A.	Total number of cases subject to complaints that were investigated	717
B.	Total number of cases subject to complaints that were dismissed	103
C.	Total number of cases subject to complaints that were resolved through negotiations	375
D.	Number of enforcement procedures taken through warning letters	463
E.	Number of enforcement procedures taken through enforcement notices	303
F.	Number of prosecutions	36

**P.3 Planning Public opening hours**

A	Average number of opening hours per week	33

**P.4 Pre-Planning Consultation**

A.	Number of pre-planning consultation meetings held	977
B.	Average length of time (in days) from request for consultation with local authority to actual formal meeting for pre-planning consultation	8

**P.5 New Buildings inspected**

A	Buildings inspected as a percentage of new buildings notified to the local authority	22.47

**P.6 Taking Estates in Charge**

A	The number of residential estates for which the planning permission has expired, in respect of which formal written requests for taking in charge (from residents or developers), were on hands at the beginning of the year	51
B	Number of estates that were taken in charge in the year in question	16
C	Number of dwellings in respect of column B	747
D	Percentage of estates in column A not completed to satisfaction of the planning authority in line with the planning permission	17.65
E	Number of estates in column D in respect of which enforcement action was taken in the year in question and/or the bond was called in	7
F	Number of estates in column D in respect of which works were undertaken by the authority to bring the estate to taking in charge standard	0



## FINANCE, INFORMATION SYSTEMS AND MOTOR TAXATION

**Oliver Killeen**

*Head of Finance and Information Systems*

### FINANCE

**"TO PROVIDE RELEVANT, TIMELY AND ACCURATE FINANCIAL INFORMATION TO ASSIST IN THE MAKING OF INFORMED DECISIONS"**

### BALANCE SHEET AS AT 31st DECEMBER 2008

	2008 €	2007 €
<b>FIXED</b>		
Operational	348,936,220	322,315,576
Infrastructural	1,947,663,380	1,953,225,643
Community	552,748	552,748
Non-Operational	11,461,336	11,734,177
	<b>2,308,613,684</b>	<b>2,287,828,144</b>
<b>Work-in-Progress and Preliminary Expenses</b>	<b>403,907,357</b>	<b>333,889,331</b>
<b>Long Term Debtors</b>	<b>28,277,271</b>	<b>25,944,164</b>
<b>CURRENT ASSETS</b>		
Stock	301,641	305,829
Trade Debtors and Prepayments	22,816,496	26,836,225
Bank Investments	24,793,660	35,167,345
Cash at Bank	2,518,273	4,154,870
Cash on Hand	14,426	13,780
	<b>50,444,496</b>	<b>66,478,049</b>
<b>CURRENT LIABILITIES</b>		
Creditors & Accruals	31,311,828	23,472,398
Urban Account	-	-
Finance Leases	437,808	93,881
	<b>31,749,636</b>	<b>23,566,279</b>
<b>Net Current Assets / (Liabilities)</b>	<b>18,694,860</b>	<b>42,911,770</b>
<b>CREDITORS (AMOUNTS GREATER THAN ONE YEAR)</b>		
Loans Payable	68,940,766	80,688,947
Finance Leases	802,888	65,242
Refundable Deposits	1,366,874	1,190,074
Other	-	-
	<b>71,110,528</b>	<b>81,944,263</b>
<b>Net Assets / (Liabilities)</b>	<b>2,688,382,644</b>	<b>2,608,629,146</b>
<b>Financed By</b>		
Capitalisation Account	2,308,613,684	2,287,828,144
Income WIP	395,073,160	336,357,679
Specific Revenue Reserve	384,904	384,904
General Revenue Reserve	70,449	1,138,928
Other Balances	(15,759,554)	(17,080,509)
<b>Total Reserves</b>	<b>2,688,382,643</b>	<b>2,608,629,146</b>

Prompt Payment of Accounts Interest – Total paid - €3,130.52

## INCOME AND EXPENDITURE ACCOUNT STATEMENT

### FOR YEAR ENDED 31st DECEMBER 2008

The Income and Expenditure Account Statement brings together all the revenue related income and expenditure. It shows the surplus/(deficit) for the year.

	<b>Gross Expenditure 2008 €</b>	<b>Income 2008 €</b>	<b>Net Expenditure 2008 €</b>	<b>Net Expenditure 2007 €</b>
<b>EXPENDITURE BY DIVISION</b>				
Housing and building	10,544,415	9,377,536	1,166,880	821,286
Road transport & safety	31,479,104	20,873,423	10,605,681	14,582,522
Water services	19,902,326	9,117,722	10,784,604	9,538,440
Development management	7,629,579	2,606,511	5,023,068	2,477,846
Environmental services	21,149,379	10,385,933	10,763,447	8,412,898
Recreation and amenity	6,852,706	606,387	6,246,318	4,490,929
Agriculture, education, health & welfare	8,791,416	7,870,926	920,491	1,013,828
Miscellaneous services	8,726,570	3,242,343	5,484,227	4,613,301
Central management charges	-	-	-	-
<b>Total Expenditure/Income</b>	<b>115,075,496</b>	<b>64,080,780</b>		
Net Cost of Divisions to be funded from Rates and Local Government Fund			50,994,716	45,951,050
Local government fund			27,483,240	26,151,406
Commercial rates			26,811,171	26,447,623
<b>Surplus/(Deficit) for Year before</b>			3,299,696	6,647,979
<b>Transfers from/(to) Reserves</b>			(4,368,175)	(6,536,304)
<b>Overall Surplus/(Deficit) for Year</b>			(1,068,479)	111,674
<b>General Reserve at 1st January</b>			1,138,928	1,027,254
<b>General Reserve at 31st December</b>			70,449	1,138,928



## SUMMARY OF CAPITAL EXPENDITURE AND INCOME

	2008 €	2007 €
<b>Expenditure (Net of Internal Transfers) *</b>		
Housing & Building	20,572,463	34,633,518
Road Transportation & Safety	107,125,667	75,039,287
Water Supply & Sewerage	16,727,910	14,530,910
Development Incentives & Control	37,940,274	3,517,907
Environmental Protection	4,867,359	11,519,111
Recreation & Amenity	3,287,738	3,027,401
Agriculture, Education, Health & Welfare	-	-
Miscellaneous	4,197,755	16,478,563
	<b>194,719,166</b>	<b>158,746,698</b>
<b>Income (Net of Internal Transfers) *</b>		
Housing & Building	26,733,412	27,247,665
Road Transportation & Safety	98,426,943	73,252,976
Water Supply & Sewerage	19,357,047	4,411,801
Development Incentives & Control	43,134,460	27,658,781
Environmental Protection	1,663,219	16,103,256
Recreation & Amenity	47,500	2,441,405
Agriculture, Education, Health & Welfare	-	-
Miscellaneous	2,345,201	22,567,345
	<b>191,707,783</b>	<b>173,683,230</b>
<b>Surplus/(Deficit) for year</b>	<b>(3,011,383)</b>	<b>14,936,532</b>
Balance (Debit)/Credit @ 1st January	32,279,303	17,342,771
<b>Balance (Debit)/Credit @ 31 December</b>	<b>29,267,920</b>	<b>32,279,303</b>

\* Excludes internal transfers, includes transfers to and from Revenue account

## INFORMATION SYSTEMS

### **“TO MAINTAIN AND PROGRESS A SECURE AND RELIABLE INFRASTRUCTURE OF INFORMATION AND COMMUNICATIONS SYSTEMS WHICH WILL FACILITATE THE MANAGEMENT AND OPERATIONS OF LIMERICK COUNTY COUNCIL”**

The Information Systems Section is continuously working on creating efficiencies within Limerick County Council. The main areas of activity in the I.T. section are as set out: -

#### **Business Continuity\Disaster Recovery**

Limerick County Council is highly dependant on I.T. Systems and the Data stored on servers. It is essential for Business Continuity that we have procedures in place to protect the Councils' Systems and Data.

- Disaster Recovery Room set up in Lissanalta House during 2008.
- Set up Redundant links between Lissanalta House and County Hall.
- Migrated a number of Major systems from Physical to Virtual Servers.
- Installed a Backup Server in Lissanalta House that can be used to run these Virtual Servers should those in the Live Environment fail.
- Work on Business Continuity\Disaster Recovery will continue during 2009, subject to adequate funding being available.

#### **Council WEB Site <http://www.lcc.ie>**

- Limerick County Councils' website provides a service to the citizens of County Limerick.
- Over 6 million hits during 2008.
- Following Web Sites are hosted by Limerick County Council.
- Limerick Clare Kerry Regional Waste Management - <http://www.managewaste.ie/>
- Limerick County Development Board - <http://www.limerickcdb.ie/>

- County Limerick Childcare Committee - <http://www.clcc.ie/>
- County Limerick Local Sports Partnership - <http://www.clisp.ie/>
- Limerick Clare Energy Agency - <http://www.lcea.ie/>
- Hosting the Limerick County Community and Voluntary Forum Web site from 2008, <http://www.lccvf.ie/>
- Developed and Implemented On-Line System for Re-Homing Dogs.
- Developed and implemented On-Line system for Purchasing and Renewing Dog Licences.

#### **Systems Development\Implementation.**

During 2008 the Information systems section developed, upgraded and implemented a number of systems that enabled user sections provide a more effective and efficient service to the citizens of County Limerick.





## MOTOR TAXATION

Limerick County Motor Taxation Office is located in Lissanalta House, Dooradoyle, Co. Limerick. This building is situated 800 yards from County Hall and is accessible from all major routes into the city. There are 35 parking spaces available to the public. Opening hours are between the hours of 9.30a.m. and 3.30p.m. daily, including lunchtime.

### ROLE OF THE MOTOR TAX OFFICE

The Motor Taxation Section of Limerick County Council is responsible for a wide range of activities and services such as: -

- Issuing of Vehicle Licences
- Issuing of Driving Licences
- Recording of Driving Licence Endorsements and Disqualifications
- Processing of Pre-January 1993 changes of vehicle ownership
- Issuing of Certificates of Roadworthiness for Heavy and Light Goods Vehicles.
- Issuing of Trade Plates to Motor Traders

There are now a number of options available to the general public to tax their vehicles:

- Tax on-line at **www.motortax.ie**. All you need to do this is a credit card or laser card, your motor insurance details, your PIN as supplied by the VRU in Shannon on your

renewal notification. The Motor Tax classifications which are eligible to avail of the online service are: Private Cars, Agricultural Tractors, Excavators, Motor Cycles, Exempt (Disabled Drivers), Vintage/Veteran and Motor Caravans and first time taxing of new or imported vehicles.

- Through the post to MotorTaxation, Lissanalta House, Dooradoyle, Co. Limerick.
- At our Area Office located in Áras William Smith O'Brien, Newcastle West, Co. Limerick
- At our Headquarters located at Lissanalta House, Dooradoyle, Co. Limerick.

### PROMOTION OF MOTOR TAX ONLINE

In 2008, Motor Tax office staff were available in the area offices around the County to promote Motor Tax Online to members of the public through information and demonstrations onsite. The Motor Tax Online facility has been available since 2004 and is a quick and easy way to tax your car online which can be done from your home or work where you have access to the internet. Limerick County Council's library service have internet facilities available to the general public at their local branch libraries.

The Motor Tax Office also circulated leaflets with step by step instructions on how to tax online and have tax/insurance/NCT disc holders for your windscreen available to the public free of charge which also advertises the online facility.

## SERVICE INDICATORS

**M: MOTOR TAXATION****M.1 Number of Motor Tax Transactions**

A.	Number of motor tax transactions which are dealt with over the counter	86827
B.	Number of motor tax transactions which are dealt with by post	31405
C.	Number of motor tax transactions which are dealt with in other ways (e.g. online, by telephone)	50331
D.	Percentage of motor tax transactions which are dealt with over the counter	51.51
E.	Percentage of motor tax transactions which are dealt with by post	18.63
F.	Percentage of motor tax transactions which are dealt with in other ways (e.g. online, by telephone)	29.86

**M.2 Time Taken to Process Motor Tax Postal Applications**

A.	Number of postal applications which are dealt with (i.e. disc issued) on the same day as receipt of the application	26245
B.	Number of postal applications which are dealt with (i.e. disc issued) on the second or third day from receipt of the application	4940
C.	Number of postal applications which are dealt with (i.e. disc issued) on the fourth or fifth day from receipt of the application	55
D.	Number of postal applications which are dealt with (i.e. disc issued) in over five days from receipt of the application	165
E.	Percentage of overall postal applications which are dealt with (i.e. disc issued) on the same day as receipt of the application	83.57
F.	Percentage of overall postal applications which are dealt with (i.e. disc issued) on the second or third day from receipt of the application	15.73
G.	Percentage of overall postal applications which are dealt with (i.e. disc issued) on the fourth or fifth day from receipt of the application	0.18
H.	Percentage of overall postal applications which are dealt with (i.e. disc issued) in over five days from receipt of the application	0.53

**M.3 Time Taken to Process Driving Licence Applications**

A.	Number of Driving Licence applications which are dealt with on the same day as receipt of the application	18439
B.	Number of Driving Licence applications which are dealt with on the second or third day from receipt of the application	1419
C.	Number of Driving Licence applications which are dealt with on the Fourth or fifth day from receipt of the application	62
D.	Number of Driving Licence applications which are dealt with in over five days from receipt of the application	56
E.	Percentage of overall driving Licence applications which are dealt with on the same day as receipt of the application	92.31
F.	Percentage of overall driving Licence applications which are dealt with on the second or third day from receipt of the application	7.10
G.	Percentage of overall driving Licence applications which are dealt with on the fourth or fifth day from receipt of the application	0.31
H.	Percentage of overall driving Licence applications which are dealt with in over five days from receipt of the application	0.28

**M.4 Public opening hours**

A	Average number of opening hours per week	30
---	--	----



**REV: REVENUE COLLECTION****Rev.1 House Rent**

A.	Amount collected at year end as a percentage of amount due from House Rent	92.78
B.	Percentage of arrears on House Rent that are 4-6 weeks old	11.30
C.	Percentage of arrears on House Rent that are 6-12 weeks old	17.23
D.	Percentage of arrears on House Rent that are more than 12 weeks old	62.00

**Rev.2 Housing Loans**

A.	Amount collected at year end as a percentage of amount due from Housing Loans	82.80
B.	Percentage of arrears on Housing Loans that are 1 month old	3.13
C.	Percentage of arrears on Housing Loans that are 2-3 months old	2.17
D.	Percentage of arrears on Housing Loans that are more than 3 months old	125.92

**Rev.3 Commercial Rates**

	Amount collected at year-end as a percentage of amount due from Commercial rates	94.74

**Rev.4 Refuse Charges**

	Percentage of households paying refuse charges (including waivers) at year end	No refuse service operated by Limerick County Council

**Rev.5 Non-Domestic Water Charges**

	Amount collected at year end as a percentage of amount due for Non-Domestic Water Charges	76.288
--	---	--------

## AREA OFFICE DEVELOPMENT

### BRUFF/CASTLECONNELL

#### BRUFF

In March, the Bruff Electoral Area lost the Electoral Division of Limerick North Rural, comprising of a number of townlands - including Caherdavin, Clonmacken and Coonagh to Limerick City Council following the boundary extension of Limerick City. This represented a population loss to the area of 7,251.

Councillor Deirdre Ní Chinneide resigned from the Council and was replaced by Tomás Hannon.

- The Bruff Area Committee has seven members and held ten committee meetings during the year
- The budget managed by the Bruff Area Office was €3.0 million
- A new footpath and public lighting was provided to the hurling field in Croom.
- A new footpath and drainage was provided at the upper end of Dooradoyle Road.
- A major scheme involving new watermain, footpaths, disabled parking and pedestrian crossings was substantially completed during the year in Bruff Town. The work also included undergrounding overhead power lines along the main street.



Gazebo in the Park in Adare

- Traffic calming measures were provided in Owenmore Drive, Churchill Meadows, and Sycamore Drive, Bruff.

#### CASTLECONNELL AREA

The Castleconnell Area Committee has seven members and held nine committee meetings during the year

- The budget managed by the Annacotty Area Office was €8.5 million.
- Traffic calming measures were provided in College Court, Elm Park and Kilbane, Castletroy, Gilmartin Park/Cois na Coille, Murroe and Mullally Grove, Cappamore.
- Major improvement works were carried out on the Newport Road consisting of 700 metres of road widening, strengthening, drainage and safety barrier in a cut-away bog area.
- New site security measures were provided to all water and waste-water treatment plants in the area.
- A new section of watermain was laid to improve supplies in the Oola/Carrigmore scheme.



Glenside Housing Estate, Castletroy



*Radharc Cillin, Kilfinane, allocated October 2008*

## KILMALLOCK

### KILMALLOCK AREA

During 2008 Kilmallock Area Committee held five meetings, and also two special meetings.

One meeting was to discuss route selection for the proposed M20. The second was a special meeting convened on 7th November to honour the memory of the late James O'Callaghan.S.E.E., Kilmallock Area Office.

In July Cllr. Eddie Creighton assumed the Chair for a period of 1 year.

#### Housing

- Kilmallock Area Office continued to maintain an increasing Housing Stock.
- 10 new Social Housing units were allocated at Glenview Drive, Hospital.
- 19 new units were allocated at Radharc Cillin, a new development at the Kilmallock Road, Kilfinane.

#### Roads

In the Kilmallock Roads area the following works were carried out.

- Regional Road Reconstruction-15,367m<sup>2</sup> at a cost of €400,600.
- Regional Road Surface Dressing-47,686m<sup>2</sup> at a cost of €178,820.
- Regional Road Specific Improvement-€301,000( Overlay on the R518 Kilmallock to Bruree road).



*Footpath at Knockainy school*

- Regional Road Discretionary Improvement-€75,162(footpaths and drainage).
- Local Roads Reconstruction-94,411m<sup>2</sup> at a cost of €1,699,400.
- Local Roads Surface Dressing-192,006.90m<sup>2</sup> at a cost of €614,422.
- Local Roads Discretionary Improvements-€91,332(footpaths and drainage).

In addition a sum of €300,000 was allocated from the Development Fund for footpaths at Kilbehenny Church, Knockainy Village, Glenroe Village, opposite Vale View, Kilfinane and Feenagh Road, Ballyagran.

#### Kilmallock Town Wall

Kilmallock has benefited greatly from its membership in the Irish Walled Towns Network. In 2008 work continued on the Public Realm Plan and the Kilmallock Town Walls Conservation and Management Plan both of which were grant aided by Network funding. Further funding enabled a programme of vegetation removal on the west wall which was carried out last autumn. This has revealed several previously unknown features in the town wall as well as the serious sections of collapse. Funding was also provided for preparatory works for a conservation project on the wall at the car-park.



*Kilmallock West wall before and after removal of vegetation November 2008*

## NEWCASTLE WEST

The Newcastle West Area provide a wide range of services which include road maintenance, housing, water services, maintenance of burial grounds, libraries, courthouses, planning clinics, and motor tax facility. The area is also responsible for the operation and maintenance of the Machinery Yard and the Bitumen Depot at Ballingrane.

### AREA COMMITTEE MEETINGS

The Newcastle Area Committee has five members and held twelve Area Committee Meetings. Francis Foley M.C.C., is the current chairman.

### ROADS

Expenditure on maintenance and improvement works in Newcastle West Roads Area in 2008 was €5.9 million, financed by way of Government Grants, Specific Improvement Grants and the Council's own resources. Works included road surface overlay, surface dressing, road strengthening, upgrading of bridge

parapets, junction improvements, upgrading of footpaths and general maintenance.

### DEVELOPMENT FUND PROJECTS

A sum of €300k was allocated to Newcastle West Area for specific projects in 2008, and the following works were carried out:

- (i) Castlemahon Village Renewal Scheme, comprising surface water drainage, footpaths, road surface and public lighting.
- (ii) Tournafulla – New footpath and public lighting link from school to village.
- (iii) St. Ita's Hospital – Junction improvements and pedestrian crossing for school.
- (iv) Pedestrian crossing at St. Mary's National School, Abbeyfeale.

### NATIONAL DISABILITY ACT GRANT WORKS

The following works were undertaken under this programme in 2008.

- Footpath, pedestrian crossing facilities, public lighting and disability parking at Ballintemple
- Replacement footpaths at Boherbui.
- New footpaths and pedestrian crossing facilities at:
  - (i) Bothar Na Plá
  - (ii) Road to Desmond Complex
  - (iii) Gortboy
  - (iv) Bishop Street
  - (v) St. Mary's Road.



## FLOODING IN THE NEWCASTLE WEST AREA

On the 31st July 2008, Newcastle West and its hinterland was severely damaged by flooding. Major infrastructural damage was caused to roads and bridges and a number of landslides occurred. Approximately €2m euros damage was caused to infrastructure as a result of the flooding. An estimated 200 homes and businesses were also damaged and a number of cars were swept from North Quay by the raging waters of the River Arra. The photographs show some of the damage caused.



*Damage to the N21 at South Quay where thirty metres of the road was undermined*



*A car that was lifted by the water from North Quay and entangled on the railings of the Courtenay Bridge*

## FLOODING IN ATHEA

Severe flooding also occurred in Athea when the river Galey burst its bank and a number of properties were flooded. Flooding occurred again on the evening of the 6th of August after further heavy rainfall.

## HOUSING

Phase 3 of the regeneration project in Castlevue/Sharwood Estates commenced in 2008 and is due to be completed in 2009 at a cost of €250,000, this includes landscaping, bollards etc.

Landscaping works were carried in the following estates in 2008:

- Assumpta Park, Newcastle West.
- Hillside Drive, Athea
- Marian Place, Glin
- Collins Park, Abbeyfeale
- Markievicz Park, Athea
- Radharc na Feile, Clash, Abbeyfeale.
- Footpaths upgrade in Assumpta Park, Newcastle West.
- 56 grants approved under the Housing Disability Grant Schemes.

## WATER SERVICES

A new watermain was constructed in Knockane, Newcastle West to improve supply to the Monagea area, this has been very successful and has eliminated the severe disruption to supply in this area experienced in recent years.

Abbeyfeale Surface Water Scheme, Killarney Road, commenced in 2008 and is due for completion April, 2009 at a cost of €700,000.

Tim Massey, Assistant Foreman Mechanical / Electrical Section retired after 51 years of service to Limerick County Council. Tim was based out of Newcastle West.



*New Thirty  
Two 7.5  
tonne  
lorries*

### MACHINERY YARD

Upgrading of the machinery stock continued in 2008 with the addition of Thirty Two 7.5 tonne lorries to replace the existing fleet that were leased over 5 years. These vehicles are of a very high specification to ensure compliance with the current Health and Safety Regulations.

- Additional features on the vehicles include -:
- ABS braking system
- Driver and passenger Air Bags
- Euro 5 specification engine, which ensures that they are environmentally friendly and affords the option to use Biofuels
- The tipping body has been specifically designed to allow the operator to discharge a load to either left/right or the rear of the vehicle

The GVW (Gross Vehicle Weight) of the vehicle allows the operator to carry a payload up 4,000Kg and also to tow an attachment up to 3,750K.

Major improvements have been carried out in the section over the past few years and we now have a state of the art machinery operation.

### GRAVEYARD IMPROVEMENTS

- Capped wall, railing provided at new entrance gate at St. Mary's graveyard, Abbeyfeale.
- Railing and new entrance gate installed at graveyard, Dromcollogher.
- Landscaping at graveyard, Tournafulla.

### PLANNING

Planning Clinics were held (by appointment) in the Area Office but Plan Map System is widely used.

### MOTOR TAX

The Motor Tax Section in Newcastle West deal with approximately 30% of the overall service.

### BITUMEN DEPOT

In addition to the above, the Machinery Yard Section operates a Bitumen Depot at Ballingrane, which had an output of approximately 1,250,000 gallons of various bitumen products in 2008. This service is used county wide to implement the Surface Dressing and general roads maintenance program.

### CASTLE DEMESNE

Enhancement works at the Demesne, Newcastle West's popular amenity park, continued in 2008, with the following works completed:

- Upgrading and macadam surfacing to car park to serve playground and G.A.A.
- Fencing and gates to overflow car-park.
- Removal of old derelict ditch, piping drains and landscaping area adjacent to playground.
- Completion of tree-lined avenue to Demesne from Town Entrance with mature lime trees.
- Macadam bases and surrounds, to facilitate wheelchair users, to all rest-benches, picnic areas.

At this stage, the trees planted from 2003 have matured very well indeed, with a very small failure rate. It is worth remembering that approximately 25,000 trees were planted by Limerick County Council in the Demesne since 2003.



*Áras Seán Finn, Rathkeale.*

## RATHKEALE

### RATHKEALE ELECTORAL AREA

The Rathkeale Office provides a range of engineering and administrative services to the Rathkeale Area, that include road improvement and maintenance, water and waste-water services, housing and customer services.

### AREA COMMITTEE MEETINGS.

The Committee held twenty one meetings during 2008, with meetings held generally in the Council offices, Rathkeale, and County Hall, Dooradoyle.

### NEW RATHKEALE AREA HEADQUARTERS

The new Rathkeale Electoral Area Headquarters, "Áras Seán Finn", and re-furbished Carnegie Library Building and Arts Centre, was officially opened on 28th January, 2008, by Councillor John Griffin in the presence of Councillor Kevin Sheahan, Cathaoirleach of Limerick County Council. Elected members, members of the clergy, a number of invited guests and Council staff attended the official opening.

### ROADS

Substantial improvement works were undertaken during the year to the Area roads network, with expenditure in excess of €4.8m. These works included road strengthening, surface dressing, macadam overlays, roadway lining, new and replacement signage, road drainage and general road maintenance. Extensive salting of roads was carried out during the winter months, particularly to the national roads, N21 and N69, as well as the major Regional roads in the area.

- Major road overlay works were completed on N69 on the Eastern approach to Glin, and on the Regional roads, R520 Bruff Line at Ballykevin and the R523 Reens-Ardagh road. Major overlay works were also completed on the Hegarty's Cross-Pallaskenry road using hot-rolled asphalt.
- Road strengthening and improvement works were completed on many other Local Primary and Secondary roads during the year. Surface dressing works were completed on many Regional and Local roads also during the year.
- Public lighting replacement and upgrading works were carried out in Pallaskenry, Ballingarry, Askeaton and Glin.
- Speed ramps were installed at the following locations : Clounreask, St Mary's Terrace and The Quay, Askeaton; St. Mary's Park, Rathkeale.
- A major re-design and re-alignment of the access road to Glin Pier was completed, and new public lighting installed, and provision made to incorporate a Playground in the area.
- Structural improvement works were completed during the year to Ballysteen Pier, with Grant assistance received from the Department of Agriculture, Fisheries and Food.
- Corbry Estate in Glin was taken-in-charge by the Council during the year and roads and footpaths within the estate were upgraded.

### HOUSING

- Maintenance and improvement works to its stock of houses as well as maintenance works to Council burial grounds and Libraries in the area.
- A budget of approx € 260,000 was allocated in 2008 for the maintenance of, and improvements to the Rathkeale Area's existing housing stock, and Residential Caravan site.
- The housing section also manages the construction of new houses as well as purchasing existing houses for Council tenants.
- Various new Housing Aid Grants processed i.e. Housing Adaptation Grant Scheme for People with a Disability; Housing Aid for Older People Scheme; and the Mobility Aids Grant Scheme.

## WATER SERVICES

- The Council operates and maintains numerous water and waste-water schemes throughout the area. Included in this is the Shannon Estuary Water Supply Scheme, which is the County's largest water supply scheme, producing in excess of 4 million gallons of potable water per day. This plant supplies water to the Aughinish Alumina Plant as well as the surrounding hinterland and operates to ISO Standard.
- The Council are currently in the process of taking in charge the new waste water treatment plants at Fedamore and Pallaskenry.
- An overall budget of approx €1.9m was allocated to the operation and maintenance of these schemes in 2008.

## BURIAL GROUNDS

The Council carries out maintenance and some improvement works to Burial Grounds in the Rathkeale area – significant improvement works were completed during the year to St. Joseph's Burial Ground, Rathkeale, and environmental improvement works completed at St. Nicholas's Burial Ground in Adare. These works included the removal of a number of dangerous trees and the cutting back of large overhanging branches from trees in adjoining lands as well as path repairs.

## ENVIRONMENTAL SERVICES.

Recycling facilities are located in the following towns and villages :

- Askeaton – Arena Car Park
- Ballingarry
- Foynes
- Loghill
- Pallaskenry – Copsewood College
- Rathkeale – New Line
- Shanagolden.



*Askeaton Playground*

Facilities include the re-cycling of glass, bottles and jars, food and drink cans. Additionally some of these centres provided facilities for re-cycling of plastic bottles, newspapers and magazines.

The Council undertakes street cleaning works at many towns and villages, with the use of a mechanical suction sweeper as well as manual cleaning. Major clean-ups are organised on a regular basis and one such clean-up was carried out in the town of Rathkeale in 2008, in the Abbeycourt and Fairhill areas primarily.

## LIFEGUARD SERVICE.

Temporary lifeguards and pier attendants were employed at both Glin and Killeary Piers during the summer bathing period.

## PLAYGROUNDS AND PLAYING PITCHES.

The Council are actively encouraging and financing the development of playgrounds and pitches throughout the County. In the Rathkeale area a new playground was opened in Askeaton, located adjacent to the swimming pool, in 2008, and another playground for Rathkeale town has gone to tender for construction in 2009.

A new all weather mini-pitch was constructed in Rathkeale town near Abbeycourt.

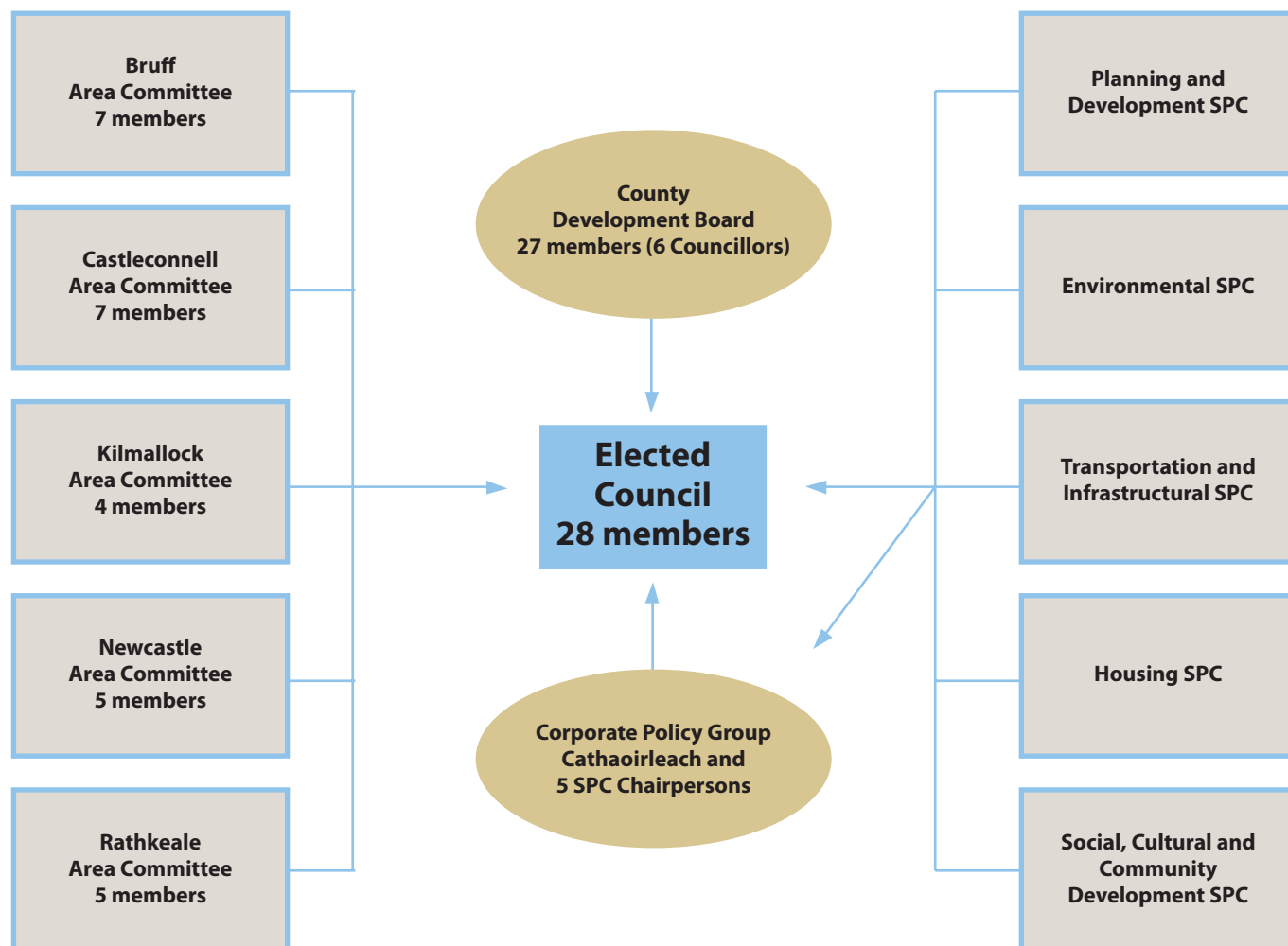
## ARTS CENTRE.

A new Arts Centre has been opened as part of the newly re-furbished Rathkeale Area Headquarters, at "Áras Seán Finn", New Line Road, Rathkeale. This venue hosted many and varied arts related events during the year, including drama, painting exhibitions, music, etc. These events are booked and overseen by the Council Arts Office.

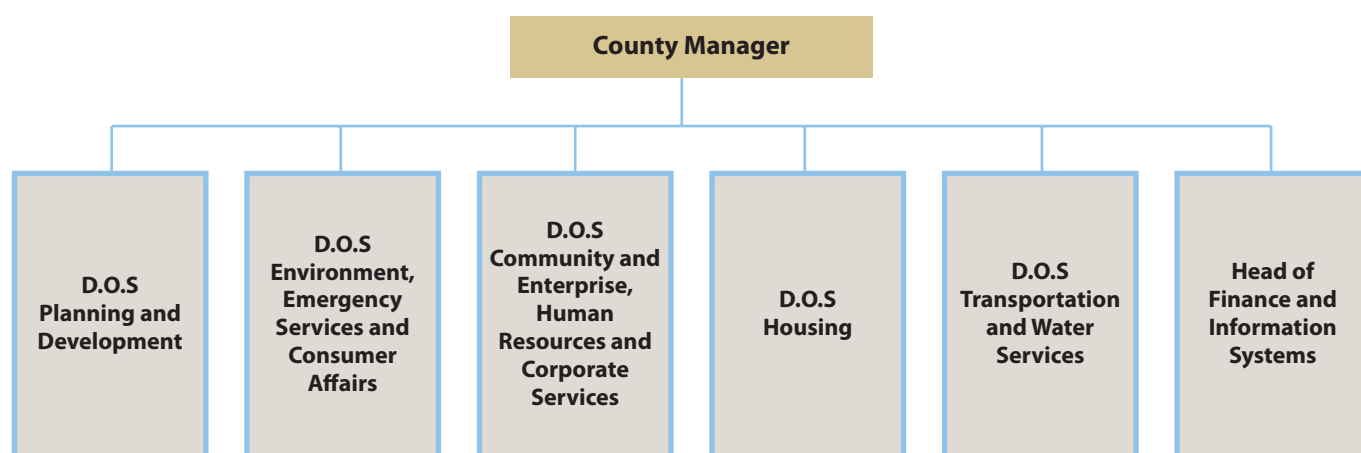


## LIMERICK COUNTY COUNCIL STRUCTURE AND ORGANISATIONAL CHART

### ELECTED STRUCTURE



### EXECUTIVE STRUCTURE



## APPENDIX 1

### CONFERENCES ATTENDED 2008

Date	Title	Venue
17th January	Fostering Co-Operation for Local and Regional Development through cross-border spatial planning	Armagh City Hotel, Friary Rd, Armagh, N.I.
1st and 2nd February	Antrim Tourism Conference "Forty Shades of Green",	Muckamore, Dunady, Co. Antrim
1st to 3rd February	The Local Government Planning Service	Clonea, Dungarvan, Co. Waterford
1st to 3rd February	Cumann Merriman Winter School 2008	Westport, Co Mayo
7th and 8th February	14th Mid West Regional Authorities "Planning for Renewable Energy"	Woodland Hotel, Adare, Co.Limerick
15th and 16th February	Association of Municipal Authorities of Ireland Spring Conference 2008	Trim Castle Hotel, Trim, Co. Meath
21st to 23rd February	Ireland Newest Immigrants, ensuring their participation in the 2009 European and Local Election	Sliver Tassie Hotel, Letterkenny, Co. Donegal
22nd and 23rd February	Training Seminar "Suicide Prevention: A Call to Action"	The City West Hotel, Dublin
29th Feb to 2nd March	19th Colmcille Winter School 2008	Gartan, Church Hill, Letterkenny, Co .Donegal
6th to 8th March	Association of County and City Councils Annual Conference	Roganstown Co. Club, near Swords, Dublin
7th to 9th March	The Annual Energy Training Seminar for Councillors	Raheen House Hotel, Clonmel, Co. Tipperary
11th March	Irish Rural Link – Social Partnership Consultation Day	Irish Rural Link, Bus. Park Moate, Co Westmeath
27th and 28th March	LAMA Annual Spring Conference	Knightsbrook Hotel, Trim
31st March	Chambers Ireland – All Island Vision	Crystal Hotel, Cavan
2nd to 6th April	16th Annual Kerry Environmental Recognition Conference	The Golf Hotel, Ballybunion, Co Kerry
3rd and 4th April	National Planning Conference "Sustainability- Are we really achieving it?"	Westport Plaza, Westport, Co. Mayo
4th to 6th April	Training Seminar - Effective Communications for Councillors	Silver Tassie Hotel, Letterkenny, Co.Donegal
9th April	Irish Rural Link – Where to now for Rural Housing?	Irish Rural Link, Moate, Co. Westmeath
17th and 18th April	Sherkin Island Marine Station 24th Annual Environment Conference	Carrigaline Court Hotel, Carrigaline, Co Cork
1st May	BMW Regional Assembly – Quality of Live: The Key to Successful Regions	Heritage Hotel, Portlaoise, Co Laois
8th and 9th May	The Role of Local Government in Community and Rural Development	Listowel Arm Hotel, Listowel, Co Kerry
14th and 15th May	Current Practice and Future Opportunities for Rural Community Transport in Rural Ireland	Brandon Hotel, Tralee, Co Kerry
15th and 16th May	Rural Sustainable Communities-Rhetoric, Pipe Dream or Reality?	The Charleville Pk Hotel, Charleville, Co Cork
16th May	Southern and Eastern Regional Assembly 9th Annual Conference	Newtownmountkennedy, Co. Wicklow
16th to 18th May	Seminar for Cllrs – Local Government and The Environment	Ballyvaughan Coast Hotel, Ballyvaughan, Co. Clare

Date	Title	Venue
16th to 18th May	The Cruachan School – Inspiration for the Next Generation	Cruachan Aí Heritage Cnt, Tulk, Co. Roscommon
5th June	Housing in a Changing Climate	Dunboyne, Co. Meath
5th June	Sustainable Development on the Edge of Europe- Options, Opportunities and Opinions	Ard Ri House Hotel, Tuam, Co Galway
6th and 7th June	How Local Economies North and South can Compete in the Global Marketplace	Portaferry Hotel, Portaferry, Co Down, N.I.
6th to 8th June	Seminar for Cllrs – The Local Government Housing Service	Bellingham Castle Hotel, Castlebellingham, Louth
12th and 13th June	Cross Border Cooperation as part of the Northern Irish Peace Process: Some Lessons for Europe	The Crowne Plaza Hotel, Dundalk
18th to 20th June	6th Carlow Nat.Conf. – Success on Your Doorstep-Managing your Local Environment for Tourism Growth	Ramada Hotel, Killerig, Co Carlow
27th to 29th June	14th Byrne Perry School – From Murder Machine to Modern Education	Christian Brothers School, Gorey, Wexford
29th June to 5th July	Synge Summer School 2008	Conference Centre Rathdrum, Co Wicklow
4th to 6th July	Seminar for Cllrs – The Local Government Planning Service	The West Cork Hotel, Skibbereen, Co Cork
5th to 12th July	13th Annual Dr. Douglas Hyde Summer School of Traditional Irish Music	Ballaghaderreen, Co. Roscommon
9th to 12th July	Alternative Enterprise, The Key to Sustaining the Rural Economy	Ballyconneely, Clifden, Co Galway
10th to 12th July	Ballymote Community Enterprise – Using our Heritage to its potential	Coach House Hotel, Ballymote, Co Sligo
12th to 19th July	MacGill Summer School 2008	Glenties, Co. Donegal
17th and 18th July	Irish Walled Town Network Conference	Athenry, Co. Galway
28th July to 1st August	The John Hewitt International Summer School – Let There be no Wall	The Market Place Theatre and Arts Centre, Armagh
30th July to 1st August	Seminar for Cllrs – The Role of Local Government in Sport	Connemara Gateway Hotel, Oughterard, Co. Galway
4th to 8th August	William Carleton Summer School 2008	Corick Hse Hotel, Clogher, Co. Tyrone
10th to 15th August	Parnell Summer School 2008 – Educating Ireland	Avondale House, Rathdrum, Co Wicklow
17th to 23rd August	From Brian Boru to Patrick Hillery: Continuity and Change in Irish Society	Glor Irish Music Centre, Ennis, Co. Clare
21st to 24th August	Humbert Summer School 2008	Ballina, Killala, Lacken and Kilcummin, Co Wicklow
22nd to 24th August	Seminar for Cllrs – Local Government and the Arts	Dooley's Hotel, Birr, Co Offaly
11th to 13th September	AMAI Association of Municipal Authorities of Ireland Annual Conf.	Sligo Park Hotel, Sligo
12th to 14th September	7th Benedict Kiely Literay Weekend – Make Straight for the Shore	Strule Arts Centre, Omagh
18th to 21st September	The Society for Folk Life Studies Annual Conference	Lake Hotel, Killarney, Co Kerry

Date	Title	Venue
19th to 21st September	Seminar for Cllrs – Energy Efficiency	Ballyconnelly, Clifden, Co Galway
23rd to 25th September	Local Government and Sustainable Economic Development	Bagenal Hotel, Leighlin Bridge, Co Carlow
25th and 26th September	Citizen First...using Technology to include all Citizens,	Ennis, Co Clare
3rd to 5th October	Greystones Town Council “The relationship between Local Authorities and the Business Sector – are there lessons to be learned?”	Charlesland Hotel, Greystones, Co Wicklow
9th to 12th October	Feile Frank McGann 3rd Annual Seminar	Strokestown, Co Roscommon
9th and 10th October	The Role of Local Government in Protecting our Water Resources	Oughterard, Co Galway
16th to 18th October	Third Sector Forum “ Local Authority Financing – A Crisis brewing, the challenge for Councillors”	Killarney Plaza Hotel, Kenmare Place, Co Kerry
17th to 19th October	21st Douglas Hyde “ Lost in Translation – A Mu in Aistriuchan”	Ballaghaderreen, Co Roscommon
24th and 25th October	North South Confederation of Councillors “ The Good Friday Agreement – 10years On”	Clifden Station Hotel, Clifden, Co Galway
26th to 29th October	Seminar for Cllrs – Irish Language Course for Councillors	Connemara Coast Hotel, Furbo, Co Galway
29th and 30th October	IREC – International Renewable Energy Conference and Exhibition 2008	Newcastle, Northern Ireland
31st October to 1st November	Seminar for Cllrs – The Local Government Budget 2009	Carlton Millrace Hotel, Bunclody, Co Wexford
31st October to 2nd Nov	Anti Social Behaviour and Associated Health and Safety Issues	The Carraigh Hotel, Carrick on Suir, Co Tipperary
4th and 5th November	Green Infrastructure – Connecting Nature, People and Places	Grand Hotel, Malahide, Co Dublin
6th to 8th November	AOIFE – Association of Irish Festival Events Conference 2008	Shearwater Hotel, Ballinasloe, Co Galway
7th November	Chamber Ireland – Constructive City and County Leadership Through BID's	Mount Wolseley Hilton Hotel, Tullow, Co. Carlow
13th November	All Island Public Consultation Conference - A Practical Approach	Croke Park Conference Centre, Dublin
14th to 16th November	Seminar for Cllrs - Public Relations and Communications Skills for Cllrs	Silver Tassie Hotel, Letterkenny, Donegal
20th November	Access and the City – Universally designed communications for ease of visiting and effective living in cities and towns	Guinness Storehouse, Dublin 8
21st to 23rd November	Seminar for Cllrs – Information and Communication Technologies for Cllrs	The Carlton Millrace Hotel, Bunclody, Wexford
26th and 27th November	LAMA Winter Seminar 2008	TF Royal Hotel, Castlebar, Co Mayo
27th November	The Heritage Council - Working Together Better for the Shannon	Radisson SAS, Athlone, Co Westmeath
27th to 29th November	Clare National Tourism Conference - “Co-Operation and Integration – The Key to Successful Tourism	Falls Hotel, Ennistymon, Co.Clare
5th and 6th December	Seminar for Cllrs – Homelessness in Ireland	The City West Hotel, Dublin
8th December	Older and Bolder- Nothing about us without us	The Gresham Hotel, O'Connell St, Dublin
12th to 14th December	Seminar for Cllrs – Effective Communications for Cllrs	Sligo Park Hotel, Sligo



## APPENDIX 2

### CONTACT DETAILS FOR LIMERICK COUNTY COUNCIL

**Address:** County Hall, Dooradoyle, Co. Limerick.

**Tel.** 061 – 496000; **Fax.** 061 – 496001; **Website:** [www.lcc.ie](http://www.lcc.ie); **E-mail:** [secretar@limerickcoco.ie](mailto:secretar@limerickcoco.ie)

**Opening Hours:** 9.30 a.m. – 4.30 p.m.

SECTION	TELEPHONE	FAX	Opening Hours
Accounts Payable	061 496266	061 496013	9.30 a.m. – 4.30 p.m.
Arts Office	061 496498	061 496009	
Building Standards	061 496378	061 496014	
Civil Defence	061 358800	061 358048	
Community and Enterprise	061 496454	061 496011	
Environment	061 496264	061 496008	
Fire HQ	061 496270	061 496007	
General Administration/ Higher Ed. Grants	061 496291	061 496001	
Housing	061 496293	061 496012	
Housing Loans	061 496466	061 496001	
Human Resources	061 496331	061 496004	
Rates/Water Charges	061 496360	061 496001	
Roads	061 496233	061 496005	
Waste Collection Permits	061 496596	061 583955	
Water Services	061 496326	061 496010	
<b>Planning</b>	061 496347	061 496006	9.30 a.m. – 3.30 p.m.
<b>Cash Office</b>			9.30 a.m. – 4.00 p.m.
<b>Motor Taxation</b>			
Lissanalta House, Dooradoyle	061 496500	061 583933	9.30 a.m. – 3.30 p.m.
<b>Mid West National Road Design Office,</b>			
Lissanalta House, Dooradoyle.	061 496800	061 583150	9.30 a.m. – 4.30 p.m.
<b>Library HQ</b>			
Lissanalta House, Dooradoyle.	061 496526	061 583135	9.30 a.m. – 4.30 p.m.
<b>Area Offices</b>	<b>Telephone</b>	<b>Fax:</b>	
Newcastle West	069 – 62100	069 62861	9.30 a.m. – 4.30 p.m.
Motor Taxation, Newcastle West	069 – 62100	069 62861	9.30 a.m. – 3.30 p.m.
Rathkeale	069 – 64129	069 63188	9.30 a.m. – 4.30 p.m.
Kilmallock	063 – 98019	063 98599	9.30 a.m. – 4.30 p.m.
Croom	061 – 397212	061 397438	9.30 a.m. – 4.30 p.m.
Annacotty	061 – 331544	061 336738	9.30 a.m. – 4.30 p.m.
Gortadroma Landfill Site	069 82339		
Mungret Civic Amenity Centre	061 305720		
Newcastle West Recycling Centre	069 78610		
Kilmallock Recycling Centre	063 98836		
Dog Warden Service	061 301604		

## APPENDIX 3

### PRINCIPAL OFFICERS OF LIMERICK COUNTY COUNCIL – 2008

County Manager	Ned Gleeson
Director of Environment, Emergency Services and Consumer Affairs	Gerry Behan
Director of Transportation and Water Services	Paul Crowe
Director of Community and Enterprise, Human Resources and Corporate Services	Josephine Cotter Coughlan
Director of Planning and Development	Tom Enright
Director of Housing	Jimmy Feane
Head of Finance and Information Systems	Oliver Killeen
County Secretary/SEO Corporate Services	Eugene Griffin
County Librarian	Damien Brady
Senior Engineer, Environment, Emergency Services and Consumer Affairs	Tom Tarpey
Senior Engineer, Transportation and Infrastructure	Pat O'Neill
Senior Engineer, Regional Road Design Office	Tim Fitzgerald
Senior Engineer, Water Services	Donal Brennan
Senior Engineer, Housing	Gerard Naughton
Senior Executive Officer, Housing	Mary Fogarty
Senior Executive Officer, Planning and Development	Christy O'Connor
Senior Executive Officer, Business Re-Engineering	Noreen Fahey
Senior Executive Officer, Human Resources	Pat Fitzgerald
Senior Executive Officer, Corporate Projects	Brian Kennedy
Head of Information Systems	Jim Dore
Senior Planner	Gerry Sheeran
Chief Fire Officer	Carmel Kirby
Veterinary Inspector	John McCarthy
Arts Officer	Joan MacKernan
Environmental Awareness Officer	Lorraine Power
Chief Technician	Michael O'Leary
Freedom of Information Officer/Customer Services Liaison Officer	Tina Knox
Partnership Facilitator/Staff Support Officer/Equality Officer	Louise Magner
Civil Defence Officer	Jos Kirby