



# 2007

{ annual report }  
tuarascáil bhliantúil



**Limerick County Council**  
Comhairle Chontae Luimnigh

# { contents }

**A Few Words from the Cathaoirleach  
and County Manager .....4**

**Members of Limerick County Council .....6**

**Council Members and Meetings .....8**

Corporate Policy Group .....8

Committees of the Council .....8

Strategic Policy Committees .....9

Representation on other Bodies .....11

**Civic Receptions 2007 .....13**

**Highlights of 2007 .....14**

**Community & Enterprise,  
Human Resources & Corporate Services ...18**

Community & Enterprise .....18

Library .....25

County Arts Office .....27

Human Resources .....28

Corporate Services .....29

General Administration .....34

Freedom of Information .....34

Internal Audit .....34

Workplace Partnership .....35

Service Indicators .....36

**Planning & Development .....37**

Service Indicators .....41

**Housing .....43**

Service Indicators .....46

**Transportation and Water Services .....47**

Roads .....47

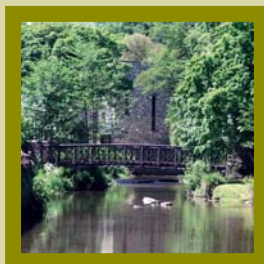
Water Services .....52

Service Indicators .....55

# 2007

## { Mission Statement }

To enhance the lives of the people of County Limerick through the efficient delivery of accessible quality services,  
with a focus on social inclusion and the promotion of sustainable balanced development.



## **Environment, Emergency Services and Consumer Affairs .....56**

Environment .....	56
Emergency Services .....	61
Building Standards .....	62
Veterinary Services .....	62
Civil Defence .....	63
Water Safety .....	64
Corporate Projects .....	65
Service Indicators .....	66

## **Finance, Information Systems & Motor Taxation .....68**

Finance .....	68
Information Systems .....	72
Motor Taxation .....	73
Service Indicators .....	74

## **Area Office Development .....75**

Bruff/Castleconnell .....	76
Kilmallock .....	77
Newcastle West .....	78
Rathkeale .....	80

## **Limerick County Council Structure and Organisational Chart .....82**

### **Appendices**

#### **Appendix 1 Conferences/Seminars attended by the Members in 2007 .....83**

#### **Appendix 2 Contact Details for Limerick County Council .....85**

#### **Appendix 3 Principal Officers of Limerick County Council 2007 .....86**



## A Few Words from the Cathaoirleach and the County Manager

It is with great pleasure that we introduce the Annual Report of Limerick County Council for 2007. This report contains information about the services provided by the Council, its elected members and departments.

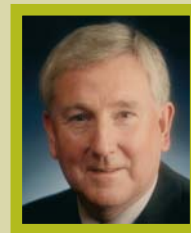
2007 was another very busy year for this Council during which we continued to work towards our goal to improve the economic, social and cultural life of our communities. The scale and diversity of the activities for the year reflect the ongoing development of Limerick as a vibrant and attractive County. The progress achieved is clearly visible from the various reports on the activities contained in this Annual Report.

During the year, the Council continued to implement an ambitious programme of modernisation in accordance with the principles established in "Better Local Government – A Programme for Change." The various policies and objectives as set out in the Corporate Plan 2004-2009 continued to provide a framework underpinning our activities.

National Service Indicators were introduced in 2004 and comparable figures are now available and published in this Annual Report for 2007 and 2006. Local Government is leading the way in publishing such indicators which reflects our commitment to being accountable for our performance. Customer consultation processes were undertaken to provide feedback etc. on our services so that we can ensure our response is tailored to meet the specific needs of our customers.

The details of the Council's achievements are set out under each Directorate's report but we would like to take this opportunity to highlight some of the very important work which was carried out on behalf of the people of County Limerick during the year. 2007 saw major progress in relation to the Council's Capital Building Programme. Several projects came to a very successful conclusion while several are continuing to go through statutory processes including detailed design and Part VIII processes. Completed projects included the Rathkeale Area Office, Library and dedicated Arts Centre; Lissanalta House, Dooradoyle and a new Civil Defence Building at Annacotty. Ongoing projects include the Kilmallock Area Office and Library and Kilmallock Fire Station. Both of these projects have gone through the Part VIII planning process. Limerick County Council is acutely aware of the need to deliver a modern and comprehensive system of local government. The construction of new area offices/public buildings forms part of the Council's ongoing efforts to provide services that are immediately accessible for members of the public throughout Limerick.

While the provision of infrastructure is essential for the development of our county, a number of advances were also made in the quality of life area, which are of equal importance. To mention but a few initiatives, we are delighted with the completion of work on the Askeaton Swimming Pool and Leisure Centre which opened its doors for business in August. Work also commenced on the new amenity park in Castletroy. As part of



the Council's Playground Scheme, a children's playground was developed in Cappamore and tenders for the upgrade of the children's playground at Abbeyfeale were also sought during the year. Other works carried out during the year included the construction of mountain bike trails in the Ballyhoura Mountains and upgrading of the facilities at Curragh Chase Forest Park.

During 2007 further progress on the Council's ambitious House Building Programme was achieved with the completion of 86 houses, the purchase of a further 34 at various locations throughout the County and the provision of 4 demountable type dwellings. Works were also progressed in the Traveller Accommodation, Homeless Services and Estate Management Programmes. 2007 also saw the setting up of County Limerick Housing Services Company. This pilot initiative will run for 3 years. It aims to deliver a variety of services to members of Voluntary Housing Associations in the County. Services will include Housing Management/Maintenance, Planned Maintenance and Housing Care & Development.

In the field of transportation and infrastructure work continues on a number of projects. Significant progress was made on the Limerick Southern Ring Road Phase II (Limerick Tunnel Project). This is one of the biggest civil engineering projects ever undertaken in the region and is scheduled for completion in 2010. Work also continued on the N7 Nenagh to Limerick High Quality Dual Carriageway and the Constraints Study for the N21 Abbeyfeale to Adare was progressed. Furthermore, the N24

Ballysimon to Pallasgreen Strategic Plan was finalised and submitted to the NRA for approval. The programme for the repair and improvement of non-national roads continues. We are conscious of the importance of these roads to the local communities they serve.

This is just a snapshot of some of the important work carried out on behalf of the people of County Limerick and a more detailed analysis is set out in the report itself.

The significant progress achieved during 2007 could not have been possible without the hard work, dedication and teamwork of our Members, Management and Staff-both indoor and outdoor, together with the many representatives of other state agencies, local community groups and the general public. The continued development of a modern, vibrant organisation, capable of providing a range of quality services to the people of County Limerick, is dependent on these partnerships. We look forward in the coming year to continuing our important work and to building our relationships with the citizens of County Limerick. We will continue to strive towards making County Limerick a unique and special place to live, work and visit with growing opportunities for everyone.

**Kevin Sheahan**, Cathaoirleach

**Ned Gleeson**, County Manager



Cathaoirleach  
2007 – 2008



Kevin Sheahan

Leas Chathaoirleach  
2007 – 2008



Brigid Teefy

## { Members of Limerick County Council }

### Bruff Electoral Area



**Rose Brennan**  
14, Park Avenue,  
Adare,  
Co. Limerick (PD)



**Richard Butler**  
Dooradoyle Road,  
Dooradoyle,  
Co. Limerick. (FG)



**John Clifford**  
Crean, Bruff,  
Kilmallock,  
Co. Limerick. (FF)



**Cormac Hurley**  
94, Sheelin Road,  
Caherdavin Park,  
Co. Limerick. (FG)



**James Cavanagh**  
Graigue,  
Adare,  
Co. Limerick. (FF)



**Leonard Enright**  
Ballyanrahan,  
Patrickswell,  
Co. Limerick. (FF)



**Deirdre Ni Chinnéide**  
7 Doonbeirne Drive,  
Ballingarry,  
Co. Limerick. (Lab)

### Castleconnell Electoral Area



**Noel Gleeson**  
Cullenagh,  
Cappamore,  
Co. Limerick. (FF)



**Mary Harty**  
Corelish West,  
Pallasgrean,  
Co. Limerick. (FG)



**Leo Walsh**  
Lower Raheen,  
Ballyneety,  
Co. Limerick. (FG)



Leas Chathaoirleach  
**Brigid Teefy**  
Ballybricken, Grange,  
Co. Limerick. (PD)



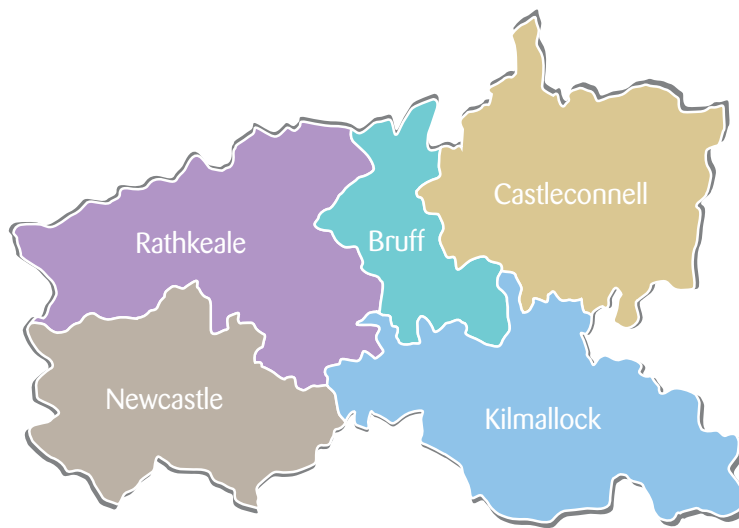
**Mary Jackman**  
Newtown,  
Castletroy,  
Co. Limerick. (FG)



**Noreen Ryan**  
Lacka, Castleconnell,  
Co. Limerick. (FF)



**Eddie Wade**  
Cahernorry,  
Drombanna,  
Co. Limerick. (FF)



### Kilmallock Electoral Area



**Eddie Creighton**  
9, St. Joseph's  
Terrace, Hospital,  
Co. Limerick. (PD)



**John Gallahue**  
Main Street,  
Ballylanders,  
Co. Limerick. (FF)



**Patrick McAuliffe**  
Railway Road,  
Kilmallock,  
Co. Limerick. (FF)



**James Houlihan**  
Stylepark, Bruree,  
Co. Limerick. (FG)

### Newcastle Electoral Area



**Michael Collins**  
Ballinvallig,  
Newcastle West,  
Co. Limerick. (FF)



**Francis Foley**  
2 Foxfield, Elliswood,  
Killarney Road,  
Abbeyfeale,  
Co. Limerick. (FF)



**Patrick O'Donovan**  
Churchtown Road,  
Newcastle West,  
Co. Limerick. (FG)



**Jerome Scanlan**  
Ballydonnell,  
Feohanagh,  
Co. Limerick. (FG)



**Liam Galvin**  
Ballaugh,  
Abbeyfeale,  
Co. Limerick. (FG)

### Rathkeale Electoral Area



**John Griffin**  
Main Street,  
Rathkeale,  
Co. Limerick. (FF)



**David Naughton**  
Ballysteen,  
Askeaton,  
Co. Limerick. (FG)



**John Sheahan**  
Ballyguilteneane,  
Glin,  
Co. Limerick. (FG)



Cathaoirleach  
**Kevin Sheahan**  
Cloonreask, Askeaton,  
Co. Limerick. (FF)



**Tom Neville**  
Croagh, Rathkeale,  
Co. Limerick. (FG)



Cllr. E. Creighton handing over the Chain of Office to Cllr. K. Sheahan on his election as Cathaoirleach



Cllr. N. Gleeson outgoing Leas Chathaoirleach congratulating Cllr. B. Teefy on her election as Leas Chathaoirleach.

## Council Members and Meetings

There are 28 members on the council - 7 members in the Bruff and Castleconnell Electoral Areas, 5 members in the Newcastle and Rathkeale Electoral Areas and 4 members in the Kilmallock Electoral Area.

Council Meetings are normally held on the fourth Monday of each month (except August when there is no meeting) in the Council Chamber at County Hall. The full Council met on 16 occasions (excluding committee meetings).

## Corporate Policy Group

The Corporate Policy Group (C.P.G.) is a Committee of the Council consisting of the Cathaoirleach of the Council and the Chairs of each of the Strategic Policy Committees. Membership is as follows:

- Councillor Kevin Sheahan, Cathaoirleach
- Councillor Tom Neville, Chairperson Housing SPC
- Councillor Rose Brennan, Chairperson Transportation and Infrastructural SPC
- Councillor John Clifford, Chairperson Planning and Development SPC
- Councillor Francis Foley, Chairperson Social Cultural and Community Development SPC
- Councillor Pat O'Donovan, Chairperson Environmental SPC

The C.P.G. links the work of the different SPC's; acts as a type of cabinet and provides a forum where policy positions can be agreed for submission to the full Council which will retain the decision making authority. The C.P.G. also monitors the performance of the local authority and plays a key role in preparing the budget. The C.P.G. met on 2 occasions.

## Committees of the Council

### Strategic Policy Committees

Title	No. of Members	No. of Meetings
Housing	18	5
Transportation and Infrastructural	18	4
Planning and Development	18	5
Social, Cultural and Community Development	15	4
Environmental	15	4

### Electoral Area Committees

	No. of Members	No. of Meetings
Bruff Area	7	12
Castleconnell Area	7	11
Kilmallock Area	4	7
Newcastle Area	5	12
Rathkeale Area	5	14

### Other Committees

	No. of Members	No. of Meetings
Traveller Accommodation Consultative Committee	12	1
Rural Water Committee	9	4



## Strategic Policy Committees

Each Strategic Policy Committee comprises of elected Councillors and sectoral representatives, working together in a more participative form of democracy, thereby providing a more effective policy focus on the functions and activities carried out by Limerick County Council. Each SPC is supported in its work by a Director of Services. While each SPC formulates and develops policy, the final decisions will rest ultimately with the full Council.

### Planning & Development SPC

Chairperson:	Councillor J. Clifford
Members:	Councillor N. Ryan
	Councillor K. Sheahan
	Councillor E. Wade
	Councillor J. Griffin
	Councillor N. Gleeson
	Councillor D. Ní Chinnéide
	Councillor M. Jackman
	Councillor J. Scanlan
	Councillor D. Naughton
	Councillor J. Sheahan
	Councillor L. Walsh

### Sectoral Representatives

#### Development/Construction & Business/Commercial:

- Mr. Liam Ryan, Managing Director, BMS Ireland, Ballysimon Road, Limerick.
- Mr. Tony O'Shea, Knock Estates, 12A Knockhill, Ennis Road, Limerick.

#### Community & Voluntary, including Environment, Conservation, Culture and Disadvantaged:

- Ms. Ann Gill, Patrickswell Community Council, Knockanes, Patrickswell, Co. Limerick.
- Mr. Charles Richardson, Knockcarron Community Council, c/o Moanmore, Emly, Co. Tipperary.
- Mr. Jeremiah O'Connor, Athea GAA Club, "Dalcon", Upper Athea, Athea, Co. Limerick.

#### Agriculture/Farming:

- Mr. John Walsh, Cloughnadromin, Ballysimon, Co. Limerick.

### Planning & Development SPC

Councillor Noreen Ryan was Chairperson of the Planning & Development Strategic Policy Committee up to 25th June 2007. The Committee is now chaired by Councillor John Clifford. This committee which comprises 12 Councillors and 6 sectoral representative met on 5 occasions. Policy items discussed included:

- Draft Rural Housing Design Guidelines
- Update on Development Contribution Scheme.
- Part V Social and Affordable Housing

- Variation to Limerick County Development Plan on proposed inclusion of new Clar Areas and the electoral divisions of Askeaton East, Iveruss and Loghill as new Structurally Weak under the County Development Plan.
- Proposed Variation to Limerick County Development Plan regarding key restrictions to persons within key towns of Kilmallock and Newcastle West qualifying to build a house within the Area of Strong Agricultural Base.

### Social, Cultural and Community Development SPC

Chairperson:	Councillor F. Foley
Members:	Councillor E. Creighton
	Councillor R. Brennan
	Councillor Ml. Collins
	Councillor P. McAuliffe
	Councillor L. Enright
	Councillor P. O'Donovan
	Councillor C. Hurley
	Councillor D. Naughton
	Councillor L. Galvin

### Sectoral Representatives

#### Development/Construction & Business/Commercial:

- Mr. John Quinn, Quinn Savage Smyth Architects, 12, Barrington St., Limerick.

#### Community & Voluntary, including Environment, Conservation, Culture and Disadvantaged:

- Ms. Joan Dempsey, Bruff Social Services, Ballyreesode, Bruff, Co. Limerick.
- Mr. Seamus Hunt, St. Vincent de Paul, c/o Dromindeel, Newcastle West, Co. Limerick.
- Mr. Seamus Ryan, Kilfinane and Coshlea Historical Society, Low Bridge, Kilfinane, Co. Limerick.

#### Agriculture/Farming:

- Mr. Robert Ruttle, Kilbreedy, Kildimo, Co. Limerick.

### Social, Cultural and Community Development SPC

The Social, Cultural and Community Development SPC met on 4 occasions. The Work Programme included the following:

- Playground Scheme and Policy for Provision of Playgrounds
- Recreation Facilities and Recreation Policy for Young People
- Migrant Issues
- Integrated Strategy for the Provision of Public Services in Rathkeale
- Soccer in the Community Development Officer
- Tidy Towns/Limerick In Bloom/Village Enhancement

### Transportation and Infrastructural SPC

**Chairperson:** Councillor R. Brennan

**Members:** Councillor B. Teefy  
Councillor M. Collins  
Councillor P. McAuliffe  
Councillor J. Gallahue  
Councillor K. Sheahan  
Councillor L. Galvin  
Councillor J. Houlihan  
Councillor T. Neville  
Councillor M. Jackman  
Councillor J. Cavanagh  
Councillor L. Walsh

### Sectoral Representatives

#### Development/Construction & Business/Commercial:

- Mr. John McInerney, PJ Hegarty & Sons Ltd., Mount Kennett Place, Limerick.
- Mr. Peter Ryan, Director, Argosea Services, 25 William Street, Limerick.

#### Community & Voluntary, including Environment, Conservation, Culture and Disadvantaged:

- Mr. Sean Donovan, Loughill Community Development Association, Loughill West, Co. Limerick.
- Mr. Denis McAuliffe, Great Southern Trail Ltd., Meenoline South, Templeglantine, Co. Limerick.

#### Agriculture/Farming:

- Mr. Aidan Gleeson, Coolaemy, Ballyorgan, Co. Limerick.

#### Trade Union:

- Mr. William Davoren, SIPTU, Doon House, Elm Park, Clarina, Co. Limerick.

### Transportation & Infrastructural SPC

The Council's Transportation & Infrastructural Committee met on 4 occasions. Items discussed by the Committee include:

- Sourcing of potential lands for Burial Grounds
- Burial Ground 'Bye-Laws
- Water Services Investment Programme
- Drinking Water Regulations 2007
- Availability of the Council's Reservoirs to facilitate delivery of Broadband countywide especially in the rural areas.
- Taxi Ranks
- Road Signage Policy
- Parking in Housing Estates

### Environmental SPC

**Chairperson:** Councillor P. O'Donovan

**Members:** Councillor E. Creighton  
Councillor J. Griffin  
Councillor L. Enright  
Councillor J. Gallahue  
Councillor D. Ní Chinnéide  
Councillor M. Harty  
Councillor R. Butler  
Councillor J. Houlihan  
Councillor C. Hurley

### Sectoral Representatives

#### Development/Construction & Business/Commercial:

- Mr. Trevor Montgomery, Senior Environment Engineer, Aughinish Alumina, Askeaton, Co. Limerick.

#### Community & Voluntary, including Environment, Conservation, Culture and Disadvantaged:

- Mr. Michael Buckley, Recycling for a Better Future, Main Street, Ballylanders, Co. Limerick.
- Mr. Michael Ryan, Oola Tidy Towns, "Bwthyn Mihangel", Chapel Lane, Oola, Co. Limerick.
- Mr. Joe Whelan, Askeaton Community Council, Clounreask, Askeaton, Co. Limerick.

#### Agriculture/Farming:

- Mr. Ger Quane, Creggane, Charleville, Co. Cork.

### Environmental SPC

The Environmental SPC met on 4 occasions. The meeting in February was held at the New Civic Amenity site in Mungret and included a tour of the new dog shelter, which is based at the same site. Items discussed at the meetings included:-

- Control of Dogs Service
- Farm Film Plastics Scheme/Collection update
- Implementation of the New National Framework for Major Emergency Planning
- Water Safety
- Election Posters displayed on poles on the N 69
- Limerick Clare Energy Agency
- Refuse Disposal in areas currently not serviced by permitted waste collectors
- Recycling facilities in the vicinities of supermarkets
- Litter Pollution Acts

### Presentations were made on

- Shannon River Basin District Significant Water Management Issues
- Implementation of the Fire Service Business Plan 2006 to 2010
- IFFPG Collection Scheme
- Site Assessment System

## Housing SPC

Chairperson:	Councillor T. Neville
Members:	Councillor B. Teefy
	Councillor E. Wade.
	Councillor J. Clifford
	Councillor N. Ryan
	Councillor F. Foley
	Councillor N. Gleeson
	Councillor J. Scanlan
	Councillor R. Butler
	Councillor M. Harty
	Councillor J. Sheahan
	Councillor J. Cavanagh

## Sectoral Representatives

### Development/Construction & Business/Commercial:

- Mr. Liam McArdle, Custom Construction, Foxfield, Dooradoyle Road, Limerick.

### Community & Voluntary, including Environment, Conservation, Culture and Disadvantaged:

- Ms. Alice McAuliffe, Dromin & Athlacca Housing Project, "Shalom", Athlacca, Kilmallock, Co. Limerick.
- Mr. Larry Begley, Mountcollins Development Association, Mountcollins, Co. Limerick.
- Mr. Kevin Flynn, West Limerick Independent Living Limited, c/o Leahys, Foynes, Co. Limerick.
- Ms. Angela Quilligan, Desmond's Women's Group, Knockane, Newcastle West, Co. Limerick.

### Trade Union:

- Mr. Michael McNamara, Building and Allied Trades' Union, Mechanics Institute, Hartstone Street, Limerick.

## Housing SPC

The Housing Strategic Policy Committee met on 5 occasions and discussed a range of issues including:

- Draft Policy of Housing Application and Transfers
- Draft Housing Strategy
- Update on Central Heating Programme
- Discussion Document on Anti Social Behaviour
- Disabled Persons Grants
- Essential Repairs Grants
- Mortgage Allowance Scheme
- Improvement Works in Lieu of Rehousing
- Extension to Local Authority Housing in lieu of Rehousing
- Social and Affordable Housing Review
- Draft Homeless Strategy & Action Plan
- Presentation on New Housing Services Company
- Provision of Ramps to facilitate Disabled in Council Housing Estates
- Role of Limerick/Clare Energy Agency

## REPRESENTATION ON OTHER BODIES

### Association of County and City Councils (formerly General Council of County Councils)

Councillor David Naughton.  
Councillor Noreen Ryan.  
Councillor Rose Brennan.

### County Limerick Vocational Education Committee

Councillor Liam Galvin.  
Councillor Mary Jackman.  
Councillor John Sheahan.  
Councillor John Clifford.  
Councillor John Griffin.  
Councillor Patrick McAuliffe.  
Councillor Rose Brennan.  
Councillor Brigid Teefy.  
Councillor Francis Foley.

### Mid-West Regional Authority

Councillor Cormac Hurley.  
Councillor James Houlihan.  
Councillor Leonard Enright.  
Councillor Eddie Creighton,  
Councillor Eddie Wade.  
Councillor Rose Brennan.  
Councillor Leo Walsh.

### Operational Committee of Mid-West Regional Authority:

Cathaoirleach - Councillor Kevin Sheahan  
Councillor Eddie Creighton.

### Southern and Eastern Regional Assembly

Councillor Eddie Creighton.  
Councillor Leonard Enright.

### Limerick Market Trustees

Cathaoirleach - Councillor Kevin Sheahan  
Councillor Deirdre Ní Chinnéide.  
Councillor Mary Jackman.  
Councillor Brigid Teefy.  
Councillor Eddie Wade.  
Councillor Francis Foley.  
Councillor Michael Collins.  
Councillor James Cavanagh.  
Councillor Leo Walsh.

### Management Committee of Limerick Market Trustees:

Councillor Kevin Sheahan.  
Councillor James Cavanagh.

### Shannon Foynes Port Company

Councillor David Naughton

#### Library Association of Ireland

Councillor Kevin Sheahan

#### Irish Public Bodies Mutual Insurances

Councillor Noreen Ryan.

#### Local Authority Members' Association

Councillor Kevin Sheahan.

#### National University of Ireland, Cork – Governing Authority

Councillor Eddie Wade.

#### University of Limerick - Governing Authority

Cathaoirleach - Councillor Kevin Sheahan

#### Advisory Committee, Graduate Medical School, University of Limerick:

Cathaoirleach – Councillor Kevin Sheahan

#### Adare Heritage Trust Ltd.

Cathaoirleach – Councillor Kevin Sheahan

#### Limerick County Enterprise Board

Councillor Mary Harty.

Councillor Brigid Teehy.

Councillor Michael Collins.

Councillor Noreen Ryan.

#### West Limerick Resources Ltd.

Councillor Liam Galvin.

Councillor Michael Collins.

Councillor James Cavanagh.

#### Ballyhoura Development Limited

Councillor James Houlihan.

Councillor Noel Gleeson.

#### RCCN (Rural Community Care Network)

Councillor Francis Foley.

Councillor Jerome Scanlan.

#### Tipperary Leader Group

Councillor Noel Gleeson.

#### Limerick/Ballybrophy Rail Link Partnership Group

Councillor Mary Jackman.

Councillor Eddie Wade.

#### Hunt Museums Trust

Councillor John Griffin.

#### Local Traveller Accommodation Consultative Committee

Councillor John Griffin.

Councillor Mary Jackman.

Councillor Pat McAuliffe.

Councillor Francis Foley.

Councillor Patrick O'Donovan.

#### County Rural Water Committee

Councillor John Griffin.

Councillor John Gallahue.

Councillor James Houlihan.

#### River Basin District Advisory Councils

##### Shannon River Basin District Advisory Council:

Councillor Eddie Wade.

Councillor John Griffin.

##### South-Eastern River Basin District Advisory Council:

Councillor Eddie Creighton.

Councillor Patrick O'Donovan.

##### South-Western River Basin District Advisory Council:

Councillor Mary Jackman.

Councillor Kevin Sheahan.

#### Regional Health Forum West

Councillor Noreen Ryan.

Councillor Leonard Enright.

Councillor Brigid Teehy.

Councillor Richard Butler.

#### Interagency Forum for Rathkeale Town

Councillor John Griffin

Councillor Tom Neville

#### Audit Committee

Councillor John Gallahue.

#### County Development Board

Cathaoirleach – Councillor Kevin Sheahan

Councillor Tom Neville

Councillor Rose Brennan

Councillor John Clifford

Councillor Francis Foley

Councillor Pat O'Donovan



## { Civic Receptions held during 2007 }



1



2



3



4

1 Garryowen Football Club were honoured at a Civic Reception held in September for the Club's achievements in Rugby Football during the 2006/2007 Season.

2 Limerick County Council honour World-Beating Limerick Sailor, Ger O'Rourke and his crew, on winning the Rolex Fastnet Yacht Race 2007

3 Cllr. Kevin Sheahan, Cathaoirleach, presents Arthur Quinlan with a Scroll, at a Civic Reception held in November, to recognise his extraordinary contribution and dedication to journalism for over fifty years.

4 The Limerick Senior Camogie Team were honoured at a Civic Reception held in November to mark their success in winning their first ever Senior B All Ireland Camogie Championship Title.



# { Highlights 2007 }



1



2



3



4

1 Opening of New Civil Defence Headquarters in Annacotty

2 Presentation of Pride of Place Award to Dromcollagher and District Respite Care Centre

3 Group of Students from Desmond College, Newcastle West, on their visit to County Hall

4 Taking Pride in their Area – Barna National School with their School's Green Flag

5 Construction work on St. Nessan's Bridge over Railway Mainline and Ballinacurra Creek as part of Limerick Southern Ring Road Phase 2

6 Launch of Castletroy Slí na Sláinte

7 Presentation of Pride of Place Award to Cappamore Community Council

8 Fire Recruits Course in Foynes



# { Highlights 2007 }





# { Highlights 2007 }



9



10



11

- 9 The Cathaoirleach, Cllr. E. Creighton, opening the Dog Shelter in Mungret
- 10 Presentation of Green Fáilte Awards
- 11 County Manager, Ned Gleeson, congratulating Cllr. Kevin Sheahan on his election as Cathaoirleach
- 12 Limerick County Council participated in the Inaugural Annual EPA – Prevention Conference
- 13 Presentation of 02 Ability Award to Limerick County Council



12



13



# { Service Reports }

Community & Enterprise, Human Resources and Corporate Services .....	18
Planning & Development .....	37
Housing .....	43
Transportation and Water Services .....	47
Environment, Emergency Services and Consumer Affairs .....	56
Finance, Information Systems and Motor Taxation ...	68

# Community & Enterprise, Human Resources and Corporate Services



**Josephine Cotter Coughlan**  
Director of Community & Enterprise, Human Resources and Corporate Services



## Community & Enterprise

*To improve the quality of life of the people of Limerick through supporting the provision of social, community, cultural and recreational initiatives and facilities in order to ensure a healthy and vibrant community*

### Community, Sport & Cultural Grants Scheme

The Community, Sport & Cultural Grants Scheme established by Limerick County Council in 2005 provides financial assistance for the development of community, recreational, sporting, environmental and cultural facilities in the county. The scheme is intended to assist community based clubs and voluntary organisations as well as providing an extra resource to Limerick County Council to assist in the provision by it of facilities that might not be otherwise funded.

As well as seeking to increase the facilities available in the county, the scheme is also designed to encourage those providing facilities to endeavour to ensure equal access by all and to examine ways in which barriers might be removed. It is also designed to ensure that environmental improvement is encouraged as an element of all developments assisted through the scheme.

The scheme has also been designed to recognise the more limited resources available to some communities and voluntary groups and to give additional assistance where it is clear that an area or organisation has a low level of facilities and cannot improve matters without special assistance.

Finally, the scheme is designed to assist those projects that are receiving funding elsewhere or where no other source of funding is available. Applicants will, therefore be expected to have sought funding from other available sources before being assisted by the scheme.

#### Examples of Projects Eligible for Funding

- Specific facilities required by an organisation addressing the needs of disadvantaged groups
- Halls and meeting rooms
- Sports facilities
- Parks
- Amenity areas
- Arts projects

#### Types & Levels of Assistance

##### Technical Assistance

This fund permits community-based clubs or voluntary organisations to apply for financial assistance towards the cost of preparing a development plan or feasibility study.

##### Capital Assistance

Assistance under this fund is available to new projects or refurbishments of existing facilities. Funding will be allocated at a variable rate based on criteria. The variable rate is designed to give a higher level of grant assistance to communities and organisations that are most in need and that have least capacity to improve their situation.



## Community Sports and Cultural Grant Scheme 2007

### Successful Applicants

APPLICANT / CLUB	GRANT AWARDED
	€
Teach na Feile Community Centre	20,000
Mountcollins GAA Club	20,000
Athea GAA Club	20,000
Dromcollogher Community Hall	20,000
Tournafulla GAA	20,000
Broadford Community Sportsfield	20,000
Springfield Basketball Club	5,000
Ballybricken GAA Club	20,000
Castleconnell Boat Club	20,000
Cappamore Celtic FC	20,000
Cappamore GAA Club	20,000
Aisling Annacotty AFC	20,000
Castleconnell Scout Group	20,000
Castleconnell Community Centre	5,000
Ballingarry Park Development Group	25,000
Cappagh Handball Club	15,000
Dromore District Anglers	20,000
Askeaton AFC	30,000
Dohyle Development Committee	20,000
Shanagolden Community Council	20,000
Bruree Rockhill Dev. Assoc.	40,000
Friars Gate Theatre Kilmallock	10,000
Hospital Community Council	15,000
Castletown GAA	30,000
Croom United AFC	30,000
Mungret St Paul's CLG	20,000
Bruff Youth Club	5,000
Croom ABU Walking Club	5,000
Thomond RFC	30,000
<b>TOTAL</b>	<b>565,000</b>

## Limerick County Development Board

Limerick County Development Board has responsibility for the implementation of a Strategy for Economic, Social & Cultural Development of County Limerick and to ensure co-ordination between various agencies and organisations at a local level.

The work of the board and its sub-structures is supported by the Director and staff of Community & Enterprise. In 2007 the CDB focused on the delivery of priority actions as part of its current 3-year implementation plan. Some of the areas addressed include:

### Social Inclusion Measures Activities

**A Joint County and City Forum for Migrants** has been established to look at meeting the needs of new immigrant communities and dealing with anti-racism. It is working to develop a Joint City and County Integration Plan.

**The County Limerick Interagency Committee for Travellers** was granted funding by Pobal to run an Employment Training Programme for Traveller men in Kilmallock and to run a Multi-Cultural Training Programme for agency and local development staff.

**Croom Partnership Group** reviewed its Action Plan for the town and public consultation meetings were held to devise new initiatives. A number of projects funded in the area including estate management work, school's research project and development of youth facilities.

### Tourism Development

The **Ballyhoura Mountain Biking** project was supported and substantial progress has been made in developing the 97km 3-looped mountain biking trails, with all loops operational at year end. Further work on trail head activities is being progressed and marketing of this tourism product is also being undertaken.

**Curraghchase Forest Park** received funding from the Council and other agencies to upgrade a number of walking and cycling routes in the park, improve access and provide extra amenities including children's playground and better picnic and barbeque facilities.

A number of **festivals and cultural events** were supported such as the Fleadh Cheoil na Mumhan, Lough Gur Story Fest, Athea Motorcycle Project, Foynes Aviation Museum and the "Walking in County Limerick" brochure.

### Community Development

A **Volunteer Support Service** was developed with resources from the Cohesion Funds and the Local Development Companies. The service provided dedicated support staff, training and other supports to volunteers across the county.

**Integrated Community Planning**, which involved staff from many agencies engaging in public consultation and planning, was undertaken in a number of communities including Rathkeale, Kilfinnane and Caherconlish.

## Enterprise Development

The promotion of improved broadband coverage is one of the aims of the CDB and through the work of Shannon Broadband Ltd and Limerick County Council funding was secured and work commenced on the installation of metropolitan areas networks (MANS) in Newcastle West and Abbeyfeale.

A number of local partnership committees involving public agencies and community representatives are operating in the county to address local economic and social issues. Partnership groups that Limerick CDB participates in and supports include:

**West Limerick Enterprise Action Group** was established as a result of the job losses in the poultry industry in the area. The group has been actively engaging with local interests and progress has been made in getting replacement businesses in the Kantoher area and funding has also been secured from Enterprise Ireland towards the costs of a new enterprise unit.

**Kilmallock Partnership's** primary focus is on the development of new industry in the area and to support the promotion of the town as a tourism and heritage destination. Funding for a new enterprise unit was secured from Enterprise Ireland and the Kilmallock Festival and other cultural events were also supported.

**Bruff Partnership** was established in 2007 to address the issue of job losses in the area and the group is engaging with business interests and the community to develop new enterprise opportunities in the area.

## The County Limerick Local Sports Partnership

The County Limerick Local Sports Partnership (LSP) which is a sub-committee of Limerick County Development Board was granted formal recognition and operational funding by the Irish Sports Council in 2007 in order to co-ordinate, plan, promote and deliver sport and physical activity opportunities locally. A co-ordinator was appointed to assist in the delivery of the main objectives of the LSP which are:

- To provide quality opportunities for education and training at local level, provide training courses targeting volunteers, provide access to sports specific courses through the National Governing Bodies of Sport;
- To establish a consultative forum, initiate research, compile a sports directory & database, and identify needs and resources to form the basis of local planning;
- To develop and implement a strategic plan for local sport, increase the impact of national programmes delivered locally, market and promote sport.



Go For Life Festival 2007



Go For Life Festival 2007

## Twinning

On the 24th April 2007 a delegation of 27 people from Hohenlohe, Germany visited County Limerick for 3 days. The group included a number of Councillors; Mr. Helmut Jahn, County Manager; a member of a Hohenlohe Newspaper among others. During their visit the delegation travelled to the Cliffs of Moher & Interpretive Centre, visited the Burren and travelled along the coast to stop off at one of the beautiful beaches before enjoying the medieval banquet in Bunratty. Also during their stay they enjoyed a presentation and tour of Plassey Technological Park, before attending a special meeting in County Hall. An evening of entertainment was also arranged for the group in Gallahues, Galbally, which was enjoyed by all. Links between Hohenlohe and County Limerick continue to grow and we look forward to progressing our workplacement and school exchanges further.

On the 20th February 2007 a group of 20 from the Ivory Coast, which included Mr. Diby Koffi Charles, Minister of Economy & Finance and Mme. Coffi Studer Martin, Minister of Communication, travelled to County Limerick with a view to establishing future areas of co-operation. As part of their visit the group heard presentations from Enterprise Agencies such as Limerick County Enterprise Board, Shannon Development & IDA. They also visited the University of Limerick and Limerick Institute of Technology. The group were also taken to Dublin to visit the Dail, where they had meetings with Government Ministers and Senators.



Group from the Ivory Coast on their Visit to County Hall in February

A delegation of elected members and officials from Limerick County Council, together with a group of local musicians and representatives from the Irish Polish Business Association visited Gdansk in Poland between the 3rd to the 7th August 2007. The visit coincided with the "St. Dominic's Fair" in Gdansk and "The International Festival of Unique Instruments". A number of meetings / presentations were held between both local authority representatives to discuss the sharing of experiences in relation to Economy and Business and Leader Programmes.

On the 15th to 18th October 2007 a group of 23 musician/dancers, a chef from the Woodlands House Hotel and a number of councillors and officials from Limerick County Council travelled to Debrecen, Hungary, as part of a cultural exchange under the International Relations Programme. As part of the visit officials from the Council gave a lecture at the University of Debrecen on Local Government in Ireland and the role of Irish Politics in the EU. The itinerary involved musicians performing in a number of venues with Hungarian musicians. The chef also cooked some Irish dishes in a restaurant, which the Hungarians thoroughly enjoyed. Also, as part of the visit, the official twinning agreement between Limerick County and Debrecen was signed.

### Town Twinning

Askeaton, Co. Limerick, Ireland and Montbron, France, officially signed a Twinning Declaration in March 2007. Strong links have been established between both communities with a delegation of forty from Askeaton having visited Montbron for the St. Patrick's weekend this year. The delegation was made up of 40 people varying in ages from six to sixty. Both communities intend strengthening this partnership further through sports, cultural and student exchanges.



Group from Pelplin, Poland, on their visit to County Hall

Newcastle West town have also established a formal town twinning agreement with Pelplin, a town sixty kilometres south of Gdansk in the north of Poland. For St. Patrick's weekend a delegation from Pelplin visited Newcastle West. The delegation was warmly welcomed in song, dance and banter by staff and students in several schools in Newcastle West. A meeting was arranged with elected and executive members of Limerick County Council and a reception with Newcastle West Community Council and Chamber of Commerce. Additionally, the delegates attended the St. Patrick's Day Mass in the town concelebrated by Irish and Polish clergy.

The coordinating group intends to explore other ways of enhancing interculturalism in Newcastle West. They have agreed to host a number of students from Pelplin from the 15th to 22nd January 2008.



## Approved Village Renewal Grant Scheme

GROUP/LOCATION	DESCRIPTION OF WORKS	APPROVED GRANT
		€
Ardagh Dev Association	Imrpove Rough Area / Landsaping	3,000
Ballybrown Clarina Comm Council	Car Park Development	10,000
Ballylanders Village Group	Development of Recreational Park	7,000
Caherelly Sportsfield Co-Op	Painting of Hall	3,000
Camogue Rovers GAA Club	Provide Walkway around GAA Pitch	5,000
Cappagh Community Council	Area behind Community Centre & Fencing	5,000
Castlemahon Dev Association	Tiling Entrance of Village Hall	3,000
Castletown Dev Assoc	Develop Plan to explore Development potential	3,000
Corrandeel Voluntary Housing	General Landscaping	3,000
Donoughmore/Knockea/Roxboro	Improvement Works to Courthouse	4,000
Fedamore Community Council	Repainting & General Landscaping	5,000
Feenagh Development Tidy Towns	General Landscaping & Wheelchair Access at GAA Pitch	10,000
Garryspillane Tidy Towns	Amentiy Development Works	3,000
Granagh Dev Assoc	Improvements to Community Centre	6,000
Herbertstown Comm Group	Dev Works to Amenity Area	7,000
Killeedy Community Council	Kerbing/Landscaping & Renovation Works	3,000
Kilteely Tidy Towns	Painiting of Parish Hall	2,000
Knockainey Historical Society	Development work at St. John's Church	7,000
Loughill Community Dev Assoc	Building Stone Wall	5,000
Oola Tidy Towns	General Landscaping	2,000
Pallaskenry Comm Council	New Secondary Lighting System	6,000
Tournafulla Dev Association	Fencing around Community Centre	5,000
<b>TOTAL GRANTS APPROVED</b>		<b>107,000</b>

## Recreation and Amenity

### Playground Scheme

#### Cappamore Children's Playground

As part of the ongoing Council Playground Scheme, a children's playground was developed in Cappamore. The site for the playground was donated by the Cappamore Development Association. At approximately 420 sq m. the playground, which is divided into two sections, caters for the age groups 0-6 and 7-12, and is situated beside the Community Centre in Cappamore. The installers were Play and Leisure Services Ltd, Carrowdore, Co. Down.

#### Abbeyfeale Children's Playground

Tenders for the upgrade of the children's playgrounds at Pairc Cois Féile, Abbeyfeale were advertised in late 2007. Work on the refurbishment should commence in early 2008.



Cappamore Children's Playground



## Askeaton Pool and Leisure Centre

Construction of the €5.66M swimming pool and leisure centre at Askeaton was completed in July. The centre opened its doors for business in August.

The project, consists of an indoor 25m swimming pool, kiddies pool, sauna and steam room, changing village and gym facility on the site of a pre-existing outdoor pool, on the west bank of the Deel river in Askeaton.

The project is being managed by a special purpose company, Askeaton Pool and Leisure Ltd, which is made up of Limerick County Council and Askeaton Swimming Club.

Funding for the development of the centre was secured from the Department of Arts, Sport and Tourism Swimming Pool Grant Scheme and Sports Capitals Grant Scheme; from Limerick County Council Development Contribution Scheme and from Askeaton Swimming Club fundraising/sponsorship.

A design team headed by Holohan Architects, and including Erinaceous Quantity Surveyors, Michael Punch and Partners, Consulting Engineers and Don O'Malley and Partners, Consulting Engineers were responsible for designing the new centre. M. Fitzgibbon (Builders) Ltd. was the lead contractor in the development of the centre.



The centre is being managed and operated by Coral Leisure on behalf of Askeaton Pool and Leisure Ltd. The centre aims to promote health, fitness and well being amongst the population of west Limerick. The centre builds on Askeaton's strong traditions of swimming and water sports.



## Contribution Scheme 2007

	€
University Concert Hall Ltd.	30,000
Foynes Aviation & Maritime Museum	25,000
Hunt Museum, Limerick	10,000
Irish Chamber Orchestra	10,000
Adare Heritage Trust Ltd.	15,000
Belltable Arts Centre, Limerick	9,000
Friarsgate Theatre, Kilmallock	9,000
Palatine Museum, Rathkeale	5,000
Askeaton Civic Trust Heritage Centre	10,000
Abbeyfeale Search & Rescue	5,000
Centre for Independent Living, Newcastle West	7,000
St Mary's Cathedral, Limerick	5,000
St John's Cathedral, Limerick	5,000
Comhaltas Ceoltóirí Éireann	10,000
to include Co. Fleadh Cheoil & Munster Fleadh Cheoil	
Community Games	6,000
Athea Motorcycle Project	6,000
Limerick Marine Rescue Service	5,000
Limerick Youth Services, Limerick	4,000
Limerick S.P.C.A	4,000
<b>SubTotal</b>	<b>180,000</b>

In addition an allocation of €25,000 was made available in respect of Christmas Lighting under the Tidy Towns Budget. It was agreed to contribute €5,000 per Electoral Area to meet the cost of insurance and electricity.

## Pride of Place

Limerick County had four participating communities in this year's Pride of Place Competition. This is an all-island competition, run by Co-Operation Ireland and facilitated by local authorities, that allows communities to showcase the elements of their localities that they have shaped and have pride in.

### This year's participating communities were:

- Cappamore (Category: Town with a population 1,000-2,000)
- Dromcollagher and District Respite Care Centre (Single Issue Entry – Third Age Care)
- The Desmond Complex, Newcastle West (Single Issue Entry – Community Facility)
- Rathkeale Community Council (Single Issue Entry – Community Facility)

Adjudication took place in July, with the awards being announced in Westport, County Mayo in November.

### County Limerick received two awards at the ceremony:

- Dromcollagher and District Respite Care Centre won its category – Third Age Care;
- Cappamore finished runners up in its category – Town with a population 1,000-2,000.



Presentation of Pride of Place Award to The Desmond Complex, Newcastle West.



Presentation of Pride of Place Award to Rathkeale Community Council

## Comhairle na nÓg2007



Comhairle na nÓg in the Council Chamber in County Hall.

The 2007 Comhairle na nÓg was held in County Hall on November 16th 2007. A total of 50 representatives from Secondary Schools and youth groups in County Limerick attended. The Comhairle provided a forum for young people aged 12-17 to discuss issues affecting their lives and also provided the opportunity to elect five young people to represent County Limerick at the Dáil na nÓg in February 2008, which will be held in the Croke Park Conference Centre.

The topics discussed by the delegates were "Drug and Alcohol Misuse" and "Are Young Peoples Voices Heard?". A report on the Comhairle was compiled and was presented to members of the Community, Social & Cultural SPC and was also copied to all secondary schools and youth groups in County Limerick.

The five delegates elected to attend the Dáil na nÓg 2008 were:

- Brian Murphy, Abbeyfeale
- Mary Long, Newcastle West
- John O'Brien, Newcastle West
- Shane Carroll, Emly
- Christine Ryan, Pallasgreen

## Library

### Library HQ Move from O'Connell Street to Lissanalta House

The major library project which reached completion during the year was the move of County Library HQ from 58, O'Connell Street to state-of-the-art premises at Lissanalta House.

Limerick Studies, Schools Service, Branch Exchange Bookstore and Library Administration have all relocated to Lissanalta House. Lunchtime opening has been introduced and students and researchers now have increased access to the local history services on offer.



Lissanalta House - View towards Limerick Studies Department

Two major innovations in the **Limerick Studies Department** were the development of a searchable place-name index for the 1901 and 1911 Census for County Limerick and the launch of the Irish Times Newspaper Archive, which is available online and allows keyword searching of all editions back to 1859.

The **Refurbishment of Rathkeale Library** reached fit-out and stocking stage with a re-launch date due early next year.



### Celebrating Reading and Writing

The county's branch library network continued to celebrate reading with a varied programme of author visits, writing workshops and storytelling sessions. Róisín Meaney, Malachy Doyle, John W. Sexton, Judy Curtin, Sarah Webb and Ré Ó Laighléis all visited County Limerick during the year to do readings and run workshops.

Adare and Dooradoyle libraries ran Summer Reading Programmes during the school holidays to celebrate the importance of leisure reading. Children who took part all received certificates of achievement and a bumper prize draw took place at the end of the project.



Helping to launch Children's Book Festival at Dooradoyle Library

**Children's Book Festival** ran throughout October with events ranging from Arran Towers' Madcap Scientist sessions to the National Print Museum's printing workshops to Chef Ciaran O'Callaghan's European Day of Healthy Eating demonstration.

### Cultural Events

Cultural events hosted included the Estonian Ambassador's visit to Newcastle West library in February, where the West Limerick Estonian community got together for the day and met their local Councillors as well as members of Newcastle West's business and educational sectors.

The Polish community also held a celebration of their culture in Newcastle West library, which included a photographic exhibition of a tour through Poland.



The Estonian Ambassador meets local Councillors in Newcastle West

Do **Sheachtain na Gaeilge**, eagraíodh imeachtaí éagsúla timpeall an chontae. I Leabharlann Fhainge, mar shampla, cuireadh Maidin Bingo agus Seisiún Peannaireachta ar siúl, chomh maith le h-Oíche Ghaelach le Comhaltas Naomh Seanáin, agus Taispeántas Leabhar Gaeilge

### Social Inclusion & Lifelong Learning:

The Library Service continues to respond to the needs of its users in an inclusive manner. In January, Dooradoyle library hosted an exhibition of artwork from the HSE Rehabilitation Unit entitled **Artability**. Another exhibition in May showcased the work of members from a variety of retirement groups in the locality. Among the 16 exhibitions held in Newcastle West library this year was one of paintings from St. Ita's Hospital and one of work by the teenagers from Sharwood Estate in Newcastle West.



At the launch of Artability 2007

**Bealtaine Festival** for older people in May included art and craft sessions and a workshop on "The lost art of letter writing".



Enjoying Bealtaine Festival at Foynes Library

### Information Technology:

In 2007, the Library Service upgraded the Library Management System Server. In addition, the Library Management System network was upgraded from leased line to a high speed secured broadband system.

### Key Performance Indicators

18,275	Registered Readers
323,503	Books Issued
328,172	Recorded visits to Dooradoyle, Newcastle West, Adare, Abbeyfeale, Foynes and Local Studies Department
35,905	New titles added to stock
146	Cultural/Civic events hosted
47	Exhibitions
30,946	Hours of public internet usage

## County Arts Office

Vibrant and varied were the words underpinning Limerick County Council's arts programme in 2007. The programme targeted all age groups from young children in schools to the older generation, encouraging participation in a wide range of creative art activity.

The County Council's Arts in Health programme expanded this year to the Regional Maternity Hospital where expectant moms were introduced to and enthusiastically enjoyed a variety of art and craft classes facilitated by artists Barbara Hartigan and Ber Bourke.



Ante Natal Art Class in progress



Dancing with and without wheels

An exciting new development for the Council's integrated dance programme "Dancing With and Without Wheels" was the introduction of integrated dance to Mary Immaculate College with

students and young members of The Irish Wheelchair Association coming together to create and perform dance. This dance programme has been innovatively designed by dancer Mary Hartney.

An expanded Bealtaine programme for our senior citizens included music, dance, and art workshops culminating in a whole celebration of creativity in venues throughout the county.



A very active - active age celebration

Music in all its forms featured very strongly in the annual programme with a highly successful Schubert series hosted in the lovely All Saints' Church Castleconnell and the establishment by the Arts Office of Allundé, a women's community singing group. Allundé sang at our International Women's Day Art Event, at Éigse Michael Hartnett and at the Lough Gur Summer Solstice Festival. Allundé sing music from all round the world creating a wonderful energy with their singing which is very aptly described in the following words by one of its members 'We meet every week to sing, we come with our hands empty, we leave with our hands empty, but so uplifted'.



Leas Chathaoirleach Cllr Brigid Teefy, His Excellency, the Austrian Ambassador Herr Walter Hagg with tenor Paul McNamara and Philip Mayers at our Schubert Concert Series

### Arts Grants and Bursaries

Under the 2007 Art Bursaries 3 Arts Organisations were awarded grants varying in amounts from €2,600 to €2,000 and 4 individuals were awarded bursaries varying in amounts from €1,000 to €400. Under our Arts Act Grant €10,000 in total were awarded to 10 individuals/organisations with amounts varying from €2,300 to €300.



## Human Resources

*To enable, encourage and support our Councillors and Employees to perform, contribute and develop to their full potential.*

### General

The Human Resources is tasked to enable, encourage and support staff in their pursuit to achieve corporate objectives and their own personal aspirations. In order to achieve this objective the Department has responsibility for the following key areas of activity within the Council;

- Staff Recruitment & Retention
- Staff Development & Training
- Staff Relations
- Work / Life Balance Initiatives
- Staff Support Services
- Pensions Administration
- Performance Management

At 31st December 2007 the Council employed 969 staff.

### Recruitment

Seventy-nine separate recruitment competitions were held during the year with 1009 candidates interviewed over 106 interview days. New requirements regarding note taking were introduced for all competitions during the year.

### Life Long Learning

During 2007 the Council conducted a comprehensive training programme for its staff and Strategic Policy Committee members. In total 1,293 training days were delivered across all disciplines of the organisation ranging from Fire Fighter Recruitment Courses, Procurement Training, Customer Service Training, Safe Pass Training etc.

The Council's commitment to supporting the IPA Local Government Programmes continued in 2007 with fifteen staff members commencing a year-long study Certificate in Local Government Programme and eleven staff members commencing the Diploma Programme in the same area. Four staff members completed the Certificate in Management Development, two staff members undertook the Degree Programme in Local Government Studies. Also, two staff members completed Corporate Masters in Business Administration Programmes at Dublin City University.

Limerick County Council expended €1.6m on Training and Development during the year representing 4.4% of payroll costs.

### Work Life Balance Initiatives

The Council continue to offer a comprehensive range of schemes and initiatives designed to facilitate staff with regard to balancing their commitments inside and outside of work. These include; the operation of flexi time, work sharing, career breaks, term time, unpaid leave, study and exam leave, force majeure leave, adoptive leave, maternity and paternity leave, special leave etc.

### Retirement Function

The Fifth Annual Retirement Function was held on 27th November in County Hall, Dooradoyle. Twenty-three staff members retired during the year.



Group at Retirement Function held in November

The retirees and their families were present at the function. Colleagues of the retired staff were also invited to the function. The Cathaoirleach made a presentation of a scroll and gift to each retired staff member and acknowledged their contribution to Council activities over many decades. A great night of celebration was enjoyed by all.

### O2 Awards

Limerick County Council was recognised for best practice in five categories in the O2 Ability Awards in a ceremony in Dublin in April 2007. Awards were received in the following areas; Customer Service, Environmental Accessibility, Leadership, Learning Development and Progression, and, Staff Retention and Well Being. The County Manager and the Leas Cathaoirleach, Cllr. Noel Gleeson accepted the awards on behalf of the Council at the Awards Ceremony.

### HR/Payroll/Superannuation System

Limerick County Council was chosen as a National Validation site for the introduction of a new Human Resources / Payroll / Superannuation system due to go live during 2008. Preparatory work for the project commenced in 2007 with the establishment of the Project Team and the project Steering Committee.

## Corporate Services

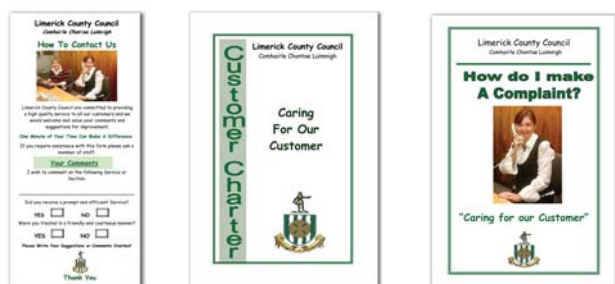
*To support and enhance the democratic role of the Council and to develop, co-ordinate and promote a corporate culture and business ethos within the organisation*

The Corporate Services Department covers a wide range of services in addition to providing Management Support Services. The Department deals with areas such as Higher Education Grants, Register of Electors, Freedom of Information, Purchasing and a wide variety of ancillary services relating to Council business.

### Quality Customer Service Initiatives

The delivery of high quality services, tailored to meet the needs of all our customers, is one of Limerick County Council's core objectives – this quality service includes not only the level and quality of service given to our customers, but also the quality of our decision making processes, the efficiency and effectiveness of our operations, the standard of our facilities and our ability to adapt in an ever-changing and increasingly complex environment. During 2007, Limerick County Council introduced three new Customer Service Initiatives as follows:

- Customer Charter
- Customer Complaints Procedure
- Comment Card System



### Customer Charter

Limerick County Council aims to successfully fulfill and exceed our customers' needs and expectations. Whether business is conducted in person, by telephone or by correspondence the Council will seek to ensure that a person is treated:

- promptly and in a courteous manner
- with due regard to privacy and confidentiality,
- by friendly and helpful staff.

The charter sets out the standards of service that a person may expect from Limerick County Council.

### Customer Complaints Procedure

Limerick County Council recognises that complaints may sometimes arise in regard to the manner in which it carries out its business. The Council has put in place a customer complaints procedure which aims to ensure that such complaints are dealt with in a consistent, fair and transparent manner. Customer complaints will be investigated by the Customer Services Liaison Officer who is responsible for the implementation of our Customer Complaints Procedure.

### Comment Card System

Comment Cards are now available at all the Council's reception areas and online. The Council is asking all customers for their input into how we conduct our business and what changes, if any, should be made to our Customer Service. Full details on our Customer Service Initiatives are available on the Council website at [www.lcc.ie](http://www.lcc.ie). Copies are also available at County Hall, Dooradoyle and at all Local Area Offices.

### Limerick County Council Opened its Doors to Students

Secondary School Students from across the County were offered a unique opportunity to take a tour through the halls of Local Government power in 2007.

Limerick County Council issued an invite to all secondary school students to visit the Council's offices in Dooradoyle. This initiative was very well received by schools and in excess of 150 students accepted the invitation and visited County Hall throughout the year. The purpose of the visits was twofold: to increase awareness of the Local Authority's role in providing vital services in the community in addition to providing advice on careers within the Local Government System.

This programme of visits will continue in 2008.



Group of Students from Hazelwood College, Dromcollogher, on their visit to County Hall.

## ANNUAL PROGRESS REPORT ON CORPORATE PLAN 2004-2009

Section 134 of the Local Government Act 2001, requires preparation and submission of an Annual Progress Report on the Corporate Plan to the Elected Members. Each Directorate produced a progress report on their Operational Plan and these reports were put before the Members at the March 2007 Monthly Meeting.

The following is a report on some of the main outcomes contained in the Annual Progress Report.

### SOCIAL INCLUSION

Implementation Team established to draft an Implementation Plan to give effect to objectives contained in the Sectoral Plan under the Disability Act.

Croom Partnership Group reviewed its three-year Action Plan. A number of projects were funded including estate management, schools research project and Croom Playground development.

Ten meetings of the Interagency Traveller Group were held during the year. Funding for the following three projects was approved by the Department of Justice, Equality and Law Reform:

- Traveller Employment
- Cultural Awareness Training
- Study of Traveller Horses

Under the Library Service, considerable works were carried out in Dooradoyle and Abbeyfeale Libraries to provide full physical accessibility. Induction Loops for the hearing impaired have been provided in 21 Libraries and an Auditorium Loop and P.A. System provided in five Main Branches.

### QUALITY OF LIFE

Participation is ongoing in the Adult Literacy Referral Network. Fifty delegates participated in Comhairle na n-Óg hosted in County Hall. Thirteen Secondary Schools out of a total of twenty-one in the county attended, as did seven Youth Clubs. Thirteen members of staff participated in the Junior Achievement Initiative Programme in primary and secondary schools in the county.

Under the Local Sports Partnership Action Plan, a Sports Co-Ordinator and Partnership Administrator appointed. A budget has been secured, programmes developed and Tutors recruited and trained. FAI Development Officer position approved by the Council. Progress was achieved on the FAI Mini-Pitch Initiative with a budget of €650,000 secured and locations and designs agreed in Cappamore, Abbeyfeale, Patrickswell, Hospital and Rathkeale.

A database of voluntary groups in the county was established and over 2,000 voluntary and community groups' details entered on the database.

Funding of €500,000 was allocated to 29 community projects under the Community, Sports and Cultural Grant Scheme. Askeaton Pool and Leisure Limited project completed. Twenty-two community projects were allocated a total of 100,000 under the annual Village Renewal Grants Scheme.

Funding of €150,000 under the Social and Community Facilities Capital Scheme 2007 was approved for five projects -

- Croom Scouts
- Spina Bifida Facilities
- Desmond Complex
- Kilmallock People's Hall
- Glin Development Association

Funding of €100,000 was allocated for a project at Gortboy, Newcastle West, as part of the aim to engage with Limerick Youth Service in relation to provision of youth services in the county. Playgrounds in Kilmallock and Cappamore completed and a Playground Policy was progressed with the SPC in 2007.

Participation in the Rural Transport Initiative has seen a new plan submitted to the Department of Transport. The project is to receive mainstream funding from 2007 and over 40 services are in place.

Support was provided to twenty-two Tourism Projects and initiatives such as Adare Heritage Centre and Foynes Flying Boat Museum. Funding was allocated to develop and upgrade facilities in Curraghchase Forest Park and the works were completed in November 2007.

Development of Ballyhoura Mountain Biking Centre was supported as part of a partnership of agencies with funding allocated to develop 95 km of purpose-built mountain bike trail.

The Library Service advanced the new Library Headquarters and Archive at Lissanalta House to completion. A stock of library books was provided to primary schools.

## HOUSING

The target of 114 units of accommodation to be completed and 10 units to be purchased was achieved. 21 suitable housing units were provided for elderly applicants in new housing schemes as set out in the Building Programme, slightly exceeding the set target.

Under the Refurbishment Programme, Phase 2 of the programme for Sharwood (Castleview), Newcastle West was completed. The refurbishment of Glenma, Croom, was commenced, as has the process to agree a strategy for refurbishment of Council estates.

New halting sites for travellers were provided at Lansdowne Bridge and Kilmallock. The target for provision of traveller accommodation as set out in the Traveller Accommodation Programme was met.

The delegation to Area Offices of the Disabled Persons Grants and Essential Repairs Grants was completed and 230 grants were approved.

The Rental Accommodation Scheme introduced in 2006 was advanced and 177 units of accommodation were transferred from the Health Services Executive, exceeding the target of 100 units. A Tenant Support Policy was prepared, presented to the Housing Strategic Policy Committee and adopted by the Council.

The Voluntary Housing Sector continues to be an area of considerable activity and 21 housing units were commenced in 2007. The Council also facilitated the development of Local Voluntary Bodies through the Voluntary Housing Forum and the target of four meetings was achieved. A Housing Association was developed and a Manager recruited for the new Company.

## TRANSPORTATION

### Limerick Southern Ring Road Phase II

Significant progress was made on the Limerick Southern Ring Road Phase II (Limerick Tunnel Project). This is one of the biggest civil engineering projects ever undertaken in the region.

### N7 Nenagh to Limerick High Quality Dual Carriageway

Work continued through 2007 on important elements, including earthworks, drainage and structures and the widening of the existing Nenagh By-Pass to Dual Carriageway cross-section.

### N21 Abbeyfeale to Adare

2007 saw the progression of the Constraints Study for this 42 km approx. project. A public consultation process was held in November and December 2007.

### N24 Ballysimon to Pallasgreen Strategic Plan

The N24 Strategic Plan was finalised and submitted to the NRA for approval in 2007. Tender documents were being prepared to procure Engineering Consultants to progress this project.

A total of €4,163,040 was spent on National Primary Improvement Works on the N24 Oola to Brooks Bridge, N24 Beary's Cross to Killonan, N20 Rockhill Cross to Hynes Cross, N21 Cregan's Cross to Newcastle West and N21 Templeglantine to Abbeyfeale.

Under the National Secondary Improvements Works, €704,640 was spent on 3 km of the N69 Glin to Loghill. The Development Fund provided funding of €1,093,410 for works completed on Lower Maiden Street, Newcastle West.

### Road Maintenance – Non National Roads

A total of €1,130,000 was spent on discretionary maintenance on surface dressing, surface restoration, pothole repairs, general maintenance and bridge repairs.

All 128 schemes were completed under the Restoration Maintenance Programme with 195 kms restored through spending of €3,269,181.

As part of the restoration improvement programme, all 101 schemes were completed covering a length of 115 kms, with expenditure of €8,297,168.

### Public Lighting

The Council maintained the current stock of 10,500 public lights at a cost of €1,235,225 for energy and maintenance charges.

A total of 42 Local Improvement Schemes were completed with a further 8 completed under the CLÁR Programme.

21 County Primary Schools participated in the Cycling Safety Skills Programme with a total of 534 pupils completing the programme.

A cinema advertising campaign aimed at raising Road Safety Awareness in relation to the consequences of speeding was undertaken during 2007.

Kilfinane Urban Renewal Scheme was completed at a cost of €835,948.



## WATER SERVICES

Under the Water Services Investment Programme, significant progress was made on detailed design of public Sewerage Schemes to serve Kilmallock, Patrickswell and Adare. Planning commenced on projects to serve Askeaton, Foynes, Shanagolden, Glin, Athea, Dromcollogher, Hospital, Pallasgreen and Bruff.

In relation to Water Schemes, a contract was signed for Patrickswell Trunk Watermain and work began on upgrading Castleconnell Watermains. Planning progressed on trunk watermains extensions to serve Caherconlish, Cappamore, Pallasgreen, Doon and Oola.

As part of the Small Towns and Villages Initiative, construction of new plants was completed in Adare, Bruree, Caherconlish, Doon and Pallaskenry.

The Water Conservation Project continues to have a considerable positive impact on delivery of water to the people of the county. In 2007, 734 leaks were identified in the network.

A sum of €1.1 million was invested in the Design, Build and Operate Project in which 18 privately sourced schemes are participating.

Investment of €534,000 in Advance Design, Build and Operate Works for Group Water Supply Schemes included the following projects:

- Booster Pumps Construction completed at Granagh and Kilfinny.
- Reservoir construction completed at Carnane.
- Pipeline construction completed at Kilfinny, Ballybricken and Glenstal.

Watermains refurbishment works were carried out on Group Water Schemes in Ballinvreena, Kilfinny, Cappagh, Kileedy, Clovers and Stumble at a cost of €1 million.

Upgrading works on Group Water Schemes were undertaken on Inch St. Laurence, Ashroe, Feenagh, Glenastar, Ballyshonick/Kilcornan. Five schemes were formally taken in charge: Scart/Highmount, Killinure/Brittis, Elton, Coolcappa and Templebredon.

Grants of €787,763 were paid to Group Water Schemes to assist in meeting annual operational expenses.

Grants of €170,903 were paid to individual houses to upgrade their private well sources.

## PLANNING & ECONOMIC DEVELOPMENT

A Local Area Plan for Caherconlish was prepared and adopted. The Castleconnell Local Area Plan was reviewed. A total of 2,681 planning decisions were made in accordance with the

statutory deadlines and the number of pre-planning meetings held was 556. Following a review, a new planning application form and guidance notes were introduced in May 2007. The total number of cases subject to complaint regarding planning enforcement that were investigated was 96.

An amount of €14,100,000 development contributions was collected under the 2003 Development Contribution Scheme. A three-year multi-annual programme adopted by the Council in 2007 for the period 2007-2009 approved support funding from the Development Fund of €32,000,000 for Transportation and €19.2 million for Water Services and Small Towns and Villages Schemes over the 3 year period. A further €5.7 million was approved for advancement of the Public Parks Programme.

As part of the strategy of encouraging meaningful public participation in the planning process, fifteen public consultation meetings were held during the preparation, monitoring and review of Local Area Plans. The Planning and Development website was reviewed and a total of 355,000 website hits were received during 2007. The number of website hits in connection with the preparation/review of Local Area Plans was 6,233.

## ENVIRONMENT

A total of 769 complaints were received under Waste Management legislation. Warning letters issued came to 362 and 67 Statutory Notices were issued. There were 9 successful prosecutions and 21 cases waiting to be heard.

The number of complaints from members of the public relating to litter pollution was 1,329 with 1,039 complaints resolved. 380 on-the-spot fines were issued, 136 Warning Letters and 7 prosecutions taken.

Complaints relating to Water, Air and Noise Pollution recorded were 219. A total of 59 Statutory Notices were served under pollution legislation and 13 prosecutions were taken.

The number of applications for Waste Collection Permits received was 110. 101 new Waste Collection Permits were issued and 97 Review Waste Collection Permits issued. Thirty Audits were conducted to ensure compliance with Waste Collection Permit conditions.

There is a considerable level of activity in relation to aims to promote public awareness on Waste Reduction, Recycling and Litter Prevention. Some of the initiatives undertaken were promotion of awareness through the educational system at primary, secondary and third level institutions. Promotion of awareness at household/community level through a programme of talks, workshops and advice clinics. Attending pre-tenancy training courses to advise new Council tenants of their obligations regarding litter and waste.

In relation to the Fire Service aim of improving response levels, 35% of incidents were attended within 10 minutes of alert and 80% within 20 minutes. The average time to mobilise brigades was 4.49 minutes. To improve customer awareness of Fire Safety, the National Fire Safety Programme was delivered to all 3rd class students in Abbeyfeale, Cappamore and Newcastle West areas. Under a pilot installation programme, 67 houses were fitted with smoke alarms by firefighters.

Under Food Safety, 100% of all slaughtered animals were inspected. 22 audits and 90 inspections of establishments were conducted.

## HUMAN RESOURCES

75 separate recruitment competitions completed, with 1,009 candidates interviewed over 106 interview days.

A total of 1,293 training days were delivered to staff. The Corporate Training Committee met on two occasions and revised training policy documents were published.

A two-day Managing your Career Programme was undertaken by 12 staff and a two-day Pre-Retirement Course was held for 14 participants. 4 staff participated in the IPA's Certificate in Management Development. Two-day Equality Team Training provided. Corporate Retirement Function held.

Electronic Annual Leave and Travel Claim Systems introduced.

Awarded O2 Ability Awards under the following headings:

- Customer Service
- Environmental Accessibility
- Leadership
- Learning Development
- Progression, Retention and Well Being.

## INFORMATION SYSTEMS

An Environmental Web Complaints System was developed and implemented by first quarter of 2007.

The Council Web Site was maintained for Accessibility at Double A Standard in line with Web Content Accessibility Guidelines. Two Web Users' Surveys were undertaken and implementation of findings where considered appropriate. The Website is increasingly being used as part of public consultation processes.

All necessary works to enable occupation of Lissanalta House were completed.

## FINANCE

Completion of the Annual Financial Statement was achieved by the second quarter of 2007 in format agreed by the Local Government Auditor.

The Annual Audit was completed on target as determined by External Audit Schedule. Preparation of Budget for consultation with the Corporate Policy Group and submission to Council achieved within the statutory timeframe. Target in relation to Treasury Management achieved through the monitoring of cash movement through i business banking to ensure maintenance of adequate cash levels. Target of 90% of Trade Suppliers to transfer to Electronic Fund Transfer achieved. New On-Line Travel Claim System introduced.

Motor Taxation service examined work practices and initiatives to facilitate continued improvement in staff expertise and increase efficiency in terms of service provision.

## CORPORATE SERVICES

Annual Progress Report on the Corporate Plan provided to the Members. Co-ordination and reporting on corporate performance against National Service Indicators completed within the required deadlines. Annual Report produced within the necessary statutory timeframes.

Irish Language Scheme for Limerick County Council confirmed by the Minister for Community, Rural and Gaeltacht Affairs.

An independent procedure was set up to handle complaints from customers and a Complaints Co-Ordinator nominated. A Draft Customer Charter was prepared setting out service standards which customers can expect when conducting business with the Council.

# General Administration

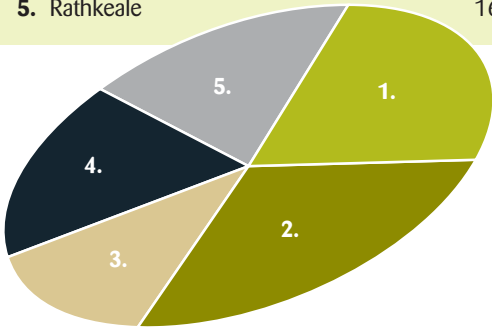
## Higher Education Grants

Limerick County Council received 451 new applications for the academic year 2006/2007 and in excess of 800 renewals were processed. Total expenditure amounted to over €3.3m and an additional €398,037 was paid out as Special Rate of Maintenance Grants. A total of 152 students were awarded Special Rate of Maintenance Grants in 2006/2007, which was slightly down on last years figure.

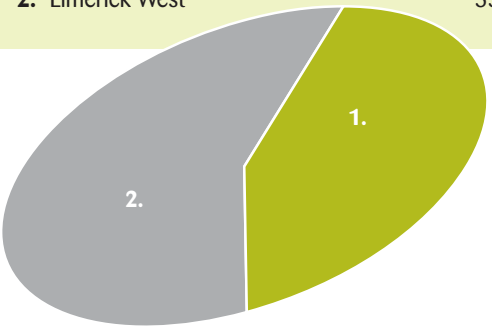
## Register of Electors

The Register of Electors is updated and produced annually and comprises a list of all persons over the age of 18 years resident in the County who are entitled to vote in Elections to the Dail, the European Assembly, Presidential and Local Elections and Referenda. The publication date for the Register of Electors is 1st February and the Register comes into effect on the 15th February each year. A Supplement to the Register of Electors 2007/2008 was compiled for the General Election in May 2007.

<b>The Local Government Electorate stands at</b>		<b>98,404</b>
1. Bruff		23,982
2. Castleconnell		25,992
3. Kilmallock		14,436
4. Newcastle West		17,212
5. Rathkeale		16,782



<b>The Dail Electorate stands at</b>		<b>97,346</b>
1. Limerick East		42,004
2. Limerick West		55,342



Members of the public can check if they are registered correctly on the Electoral Register on [www.lcc.ie](http://www.lcc.ie) (Register of Electors Online Enquiries). If your details are incorrect or you are not registered, please apply for an application form to [electoralregister@limerickcoco.ie](mailto:electoralregister@limerickcoco.ie).

## Freedom of Information (FOI)

During 2007 there were 27 FOI requests (25 valid and 2 invalid) and 3 internal reviews.

### The FOI Act 1997 as amended established three new statutory rights:

- for each person to access information held by public bodies
- for each person to have official information relating to him/herself amended where it is incomplete, incorrect or misleading
- to obtain reasons for decisions affecting oneself

### The Act gives right of access (subject to exemptions) to:

- all records created after commencement of this Act for Local Authorities i.e. 21st October 1998.
- such records created before that date as may be required to understand records created after commencement of the Act.
- personal records regardless of when created.
- in the case of staff members, personnel records created from a date 3 years before commencement of the Act.

A standard application fee of €15 must accompany an FOI request for a record or records containing non-personal information.

A reduced fee of €10 applies if the person making such a request is covered by a medical card and supplies certain details.

The Freedom of Information Acts set out appeal mechanisms in the event of a refusal of a request, or in relation to deferral of access, charges, form of access etc., There are also fees payable in certain cases on appeal.

## Internal Audit

The Internal Audit Section is an independent function that reviews the systems, procedures and internal controls in place throughout the Council. These reviews are carried out in order that management can have confidence that the systems and procedures they have put in place:-

- Safeguard the assets of the Council
- Safeguard staff
- Promote high standards of accountability
- Help guard against fraud
- Promote effective service delivery



The ongoing work of the Internal Audit Section involves the following activities:-

- Review and implement Audit Plan.
- Review County Checker Procedures.
- Work with external auditors.
- EU audit requirements.
- Review performance indicators.
- Co-ordinate value for money studies.

The County Checker operates within the internal audit function and carries out a continuous audit of financial transactions in areas such as revenue collection, cash receipting and motor tax collection.

## Workplace Partnership



Some changes took place in 2007 of personnel involved in Workplace Partnership. 2007 marked the departure of Mr. Pat Mulcahy, Partnership Facilitator. The workplace partnership committee extended their best wishes to Pat on his retirement.

Mr. Mulcahy has been replaced by Louise Magner, who shall work to raise the profile of partnership throughout the Council. Ms. Anne Haugh, management representative, left the Council during 2007. Ms. Josephine Cotter Coughlan, Director of Service for Community & Enterprise, Human Resources and Corporate Services has taken her place.

### Progress on the 2006 – 2008 Action Plan

Actions that have been progressed during 2007, include the following

- Formation of working groups for public private partnership, Information & Consultation agreement.
- Completion and submission of the Performance Verification Report (PVG)
- Training delivered to new working group members in November 2007

### Return to Learning

The Council continues to support its' commitment to the Life Long Learning in the Local Government Sector, which is documented in the Ten Year Framework Towards 2016, Social Partnership Agreement (Life Cycle Commitments).

Two programmes were delivered in partnership with County Limerick VEC during 2007. A course, aimed at improving numeracy and literacy skills, was provided to enable staff members to work towards achieving Level 1 and Level 2, FETAC certification.

More advanced training in IT Skills, presentation skills and improved communication was completed by 6 supervisors. The success of both programmes is evident in the participation levels to date.

### Personal Protective Equipment (PPE)

The committee met 5 times during 2007. The tender was prepared and awarded in October 2007. This working group will remain in place and will work to achieve continued improvements in the annual provision of PPE to staff.

### Machinery Yard

This group had a final meeting in November 2007. The group carried out a review of the adopted 5 year machinery plan. The members were delighted to note, that the recommendations were exceeded in many areas.



### Public Private Partnership Working Group

The inaugural meeting was held on the 13th November. There are 10 members in the group – the breakdown is as follows: 3 from SIPTU, 2 Impact, 1 Lapo, 1 Amicus and 4 Management Representatives.

The working groups' brief includes the examination of the delivery of the universal metering project in County Limerick and reporting on the implementation of any Design, Build and Operate projects that may be delivered by the Water Services Section of the Council.

### Information & Consultation Agreement

The EU Directive 2002/14/EC of March 2002 was transposed into national Irish legislation in the "Employees (Provision of Information and Consultation) Act 2006". Together, they set out the basis and obligations for organisations to put in place procedures, processes and practices to enable effective information sharing and consultation between employers and employees' representatives.

A sub-group of the main workplace partnership committee has been established to examine the formal introduction of the agreement within the Council.

## Service Indicators

<b>C:</b>	<b>Corporate Issues</b>	<b>2005</b>	<b>2006</b>	<b>2007</b>
<b>C.1:</b>	<b>Percentage of working days lost to sickness absence through</b>			
	certified leave	3.87	2.67	3.46
	uncertified leave	0.38	0.43	0.37
<b>C.2:</b>	<b>Expenditure on Training and Development as a percentage of total Payroll costs</b>	5.31	5.28	4.46
<b>L:</b>	<b>Library Services</b>			
<b>L.1:</b>	<b>Public opening hours</b>			
	average number of opening hours per week for full-time libraries	36.5*(a)	38	37
	average number of opening hours per week for part-time libraries (where applicable)	12.0*(b)	9*(d)	9.25
<b>L.2:</b>	<b>Number of registered library members as a percentage of the local population</b>	15.5	<b>Total Number</b> 18804	18275
<b>L.3:</b>	<b>Number of items issued per head of population (county/city wide) for:</b>		<b>Total Number</b>	
	(a) Books	2.85	335836	315865
	(b) Other Items	0.07	6879	7638
<b>L.4:</b>	<b>Percentage of libraries that offer Internet access to the public</b>	70.37*(c)	79.1	98
<b>L.5:</b>	<b>Number of Internet sessions provided per 1,000 population</b>	275	30996*(e)	30946
<b>A&amp;C:</b>	<b>Arts and Cultural Services</b>			
<b>A&amp;C.1</b>	<b>Arts Grants</b>			
	number of arts grants paid	12	11	18
	total value of arts grants paid per 1,000 population	€131.93	€16,000	€20,000
			<b>(Total value)</b>	
<b>R:</b>	<b>Recreational Services</b>			
<b>Rec: 1</b>	<b>Number of children's playgrounds per 1,000 population</b>			
	directly provided by the local authority	0.01	1	3
	facilitated by the local authority	0.01	2	1
<b>Rec: 2</b>	<b>Number of visitors to local authority facilitated swimming facilities Per 1,000 population</b>	0	0*(f)	16417
<b>C.P:</b>	<b>Community Participation &amp; Co-operation – Your Local Authority</b>			
<b>C.P:1</b>	<b>Percentage of local schools involved in the local Youth Council/ Comhairle na n-Óg scheme</b>	67	71*(g)	61.9

\*(a) Lunchtime opening was introduced in Glin and Adare Libraries in 2005

\*(b) Includes 15 part-time, 2 mobiles and 5 centres – Note: Rathkeale library is temporarily closed due to renovations.

\*(c) 9 New Internet sites were added in late 2005

\*(d) Applying the revised methodology for unscheduled closures has resulted in a decrease in opening hours for part-time libraries.

\*(e) Decrease in the number of internet sessions by 2,330 hours due to closures for refurbishment works as part of the disability strategy.

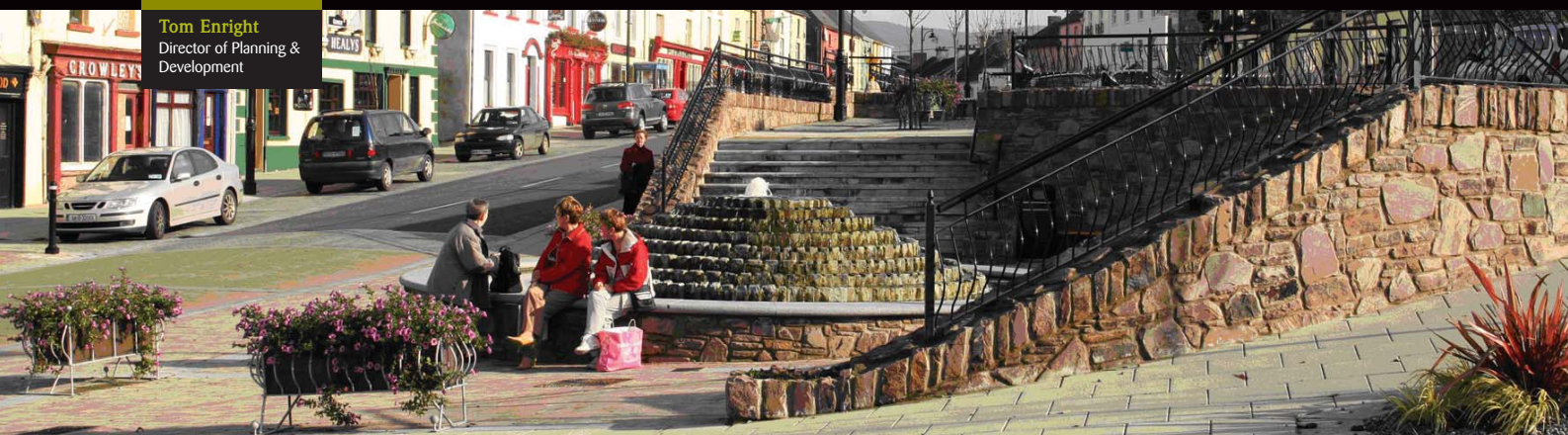
\*(f) Limerick County Council does not have swimming facilities at present

\*(g) Limerick County Council invite participants from all second level schools, youth groups and training centres in County Limerick (21 in all) . The figure of 71% is based on the second level schools, youth groups and training centres who sent participants on the day.



**Tom Enright**  
Director of Planning &  
Development

## Planning & Development



## Planning & Development

*To adopt a positive approach to balanced economic development through the proper planning and sustainable development of the County.*

The Planning Department aims to ensure that all developments permitted in County Limerick are designed to the highest quality standards thereby providing balance and sustainability within the County. It also aims to provide an efficient, accessible, and transparent service to all our customers.

In order to achieve our objectives the Planning and Development Section of Limerick County Council divides its resources amongst four main areas -

- **Development Management**
- **Forward Planning**
- **Enforcement**
- **Development Contributions**

## Development Management

The Development Management Section processes all planning applications for the County in accordance with the Planning and Development Acts 2000 -2006 and the Planning and Development Regulations of 2001 - 2007.

During 2007 Limerick County Council's Planning Authority processed a total of 3649 applications, in excess of 70 applications per week.

2007 saw a 12% decrease in the number of applications received by the Planning Authority on 2006 figures.

The number of applications granted was 2,351 and the number of applications refused was 330, giving a grant rate of 88% and a refusal rate of 12%.

Of the 110 decisions by the Council appealed to An Bord Pleanála, 77 were upheld by the Board giving a confirmation rate of 77%.

### Planning Application Form

The Department of Environment , Heritage and Local Government introduced a new prescribed standardised application form in 2007. Each planning authority has its own development plan , which sets out local development policies and objectives for its own areas. Limerick County Council may need supplementary information in order to confirm whether the application conforms with the development plan and may request this on a supplementary application form. In accordance with Section 38 of the Planning and Development Act 2000, Limerick County Council makes all copies of applications available for inspection at our planning offices and on the internet site [www.lcc.ie](http://www.lcc.ie).

### Counter Service

Planning Staff continued to provide the 'Over the Counter' validation service in a bid to reduce the number of invalid application received by the Authority. An electronic information screen was installed at the counter to inform members of the public visiting the office of planning policy and procedures.

### Pre Planning

This initiative seeks to improve the quality of subsequent planning applications, avoids the necessity of seeking further information where possible and in some cases spares the costs which an applicant would incur on a planning application. 556 pre-planning meetings were held during the year.



### Website

The website provides a wide variety of useful information in relation to the planning process, including the facility to download forms and guidance notes etc. In 2007 the website was updated to include the new application form and supplementary application form. In 2007 the Planning website received 355,505 hits.

### Agents Seminar

A seminar for planning agents was held during the year. There was a large turnout and the content of the seminar reflected issues of concern and importance for all parties in the planning process.

### Finger Post Licences

Under the Planning and Development Regulations a Finger Post Licence is required if you wish to place or maintain a finger post sign on a public roadway. The purpose of the licence is to regulate the amount of directional signs being erected on our public roads. Limerick County Council received 13 new applications and renewed 25 existing applications during the year.

## Forward Planning

The Forward Planning section deals with the preparation of Development Plans, Local Area Plans and other policy documents.

### Limerick County Development Plan 2005 – 2011

In February 2007, the Elected Members were presented with the Manager's Report outlining progress achieved in securing the objectives of the Limerick County Development Plan 2005 – 2011. This was in accordance with the statutory requirement as contained in Section 15 (2) of the Planning and Development Act 2000.

Two variations to the County Development Plan were adopted, amendments to policies SP25 (Settlement Strategy) and SP26 (Extended Structurally Weak Areas) -

- **SP25** (Settlement Strategy) Criteria for persons living in the key towns of Newcastle West and Kilmallock to qualify to build a single house within the Area of Strong Agricultural Base
- **SP26** (Structurally Weak Areas) This includes the new CLAR areas in the County and the electoral divisions of Askeaton East, Iveruss and Loghill as new Structurally Weak Areas in the Settlement Strategy of the Plan.

### Local Area Plans

A Planning Authority may prepare Local Area Plans for any area within its functional area. Plans must be made for areas with a population of 2,000 and a Local Area Plan shall be consistent with the objectives of the Development Plan. During the year Local Area Plans for Kilfinane, Rathkeale and Castleconnell were adopted.

### Conservation Office

During the course of the year 54 Certificates of Provisional Approval for works under the Conservation Grant Scheme were issued.

In Autumn, in association with the Irish Georgian Society and the Heritage Council, Limerick County Council co-hosted the Annual Traditional Building and Conservation Skills in Action Exhibition. The two-day exhibition was officially opened in the Village Hall, Adare by the Cathaoirleach, Cllr. Kevin Sheahan on Saturday, September 8th. A notable feature of the week-end of activities were outdoor demonstrations by craftsmen, such as masons and a black-smith, plasterers and stuccadores, a thatcher and the Council's own specialist crew from the Kilmallock Depot who demonstrated the art of constructing a swept valley on a traditional slate roof.



Cathaoirleach Opening the Annual Traditional Building and Conservation Skills in Action Exhibition



Kilmallock Depot Crew demonstrating the art of constructing a swept valley on a traditional slate roof.

At year's end the Record of Protected Structures contained over 1,500 entries. In addition a number of additional buildings, located in towns and villages where Local Area Plans were being prepared, were being assessed for entry.

### Heritage

The major heritage projects that are in place for the year 2007 were those of the Conservation and Management Plan for the Town of Kilmallock and the Public Realm Plan for the town. These plans are being prepared in order to safeguard the Medieval town walls of Kilmallock and are expected to inform the content of the Local Area Plan for the town which is due to be reviewed shortly. These plans owe much to the sterling work of the County Archaeologist Sarah McCutcheon and indicate the benefits of partnership approach to heritage issues within the county.

## Enforcement

It is the responsibility of the Enforcement Section of the Council to ensure that all development is carried out in accordance with the requirements of the Planning and Development Acts and with the conditions of the relevant planning permission granted. The enforcement section ensure that all identified unauthorised developments are eliminated or regularised as quickly as possible through appropriate enforcement procedures.

There was a significant increase in the number of unauthorised developments that came to the attention of the Council in 2007 with a total of 696 complaints being investigated. These investigations resulted in 413 Warning Letters and 276 Enforcement Notices being issued. Comparative figures for 2006 are outlined below. The Council also prosecuted 20 cases in this period.

	2006	2007
Warning Letters issued	148	413
Enforcement Notice issued	123	276
Prosecutions	30	20

## Development Contributions

Section 48 of the Planning & Development Acts 2000 provides that when granting planning permission a local authority may, as a condition of that planning permission, require the payment of a contribution in respect of public infrastructure and facilities benefiting development in the area of the Planning Authority. The Development Contribution Scheme for Limerick County Council was adopted on 19th December 2003 for a period of 5 years. This scheme is now due for review and this review has been initiated with a view to having a new scheme in place by early 2009.

During 2007 a 3 year multi annual programme of expenditure was approved from 2007-2009 in the sum of €64m for spending on a variety of projects throughout the county. This programme allows for a more long term strategy to be put in place. Some of the projects will take a number of years to complete and so may require additional funding in the coming years. The overall objective is to ensure that projects are advanced and delivered in a timely and cost effective manner in line with the 3 year programme.

In the allocation of funding the approved strategy for expenditure is generally on the same basis as the contributions were calculated in the first instance i.e. 50% to Transportation, 30% Water Services and 20% to Community Enterprise Projects.

As can be seen from the table a total of €14.1m was collected in 2007 under the Development Contribution Scheme 2003. A sum of €7.1m is currently outstanding. However, agreements have been made with developers for the payment of some of the monies due and in cases where the contribution is not paid and agreements have not been made for payment, enforcement action will be taken for the recovery of the monies outstanding. It is important to note that while contributions are levied at the time that the decision to grant planning permission is made, the levy does not fall due for payment until the development is about to commence. As there may be a lead in of a number of years in some cases, payment of the contribution will not be made until around the time the development is commenced.

It is the ultimate aim that the funds raised through this scheme are re-invested in the county to provide very necessary public infrastructure and to enhance the quality of life for those living and working in County Limerick.

### Development Contribution Scheme 2003

Monies Received in 2007 in accordance with Development Contribution Scheme 2003	€14,198,924.32
Actual Monies Outstanding in 2007 in accordance with Development Contributions Scheme 2003	€7,143,626

## Development Fund Allocations 2003 Scheme – 3 Year Multi Annual Programme approved for 2007-2009

### Summary Chart Allocations 2007-2009

No.	Programme	Total Allocation 2007	Total Allocation 2008	Total Allocation 2009	Overall Total Allocation 2007 -2009	% Allocation
1(a) & (b)	Water Services & Small Towns & Village Initiatives	€5.4m	€6.6m	€7.2m	€19.2m	30%
2	Community & Enterprise	€3.6m	€4.4m	€4.8m	€12.8m	20%
3	Transportation	€9m	€11m	€12m	€32m	50%
<b>Total Allocation</b>		<b>€18m</b>	<b>€22m</b>	<b>€24m</b>	<b>€64m</b>	<b>100%</b>
<b>OVERALL TOTAL ALLOCATION 2007 - 2009</b>			<b>€64m</b>			

Set out below are a sample of projects approved under the above:

#### The projects which received approval for funding from the Development Fund in 2007 included:

Hospital Water Supply Augmentation	€1.2 m
Ballingarry Sewerage	€1 m
Castletroy Public Park	€2.5 m
Caherdavin Public Park	€1.5 m
Croom Distributor Road	€1.2 m
Castletroy Distributor Road Phase 2	€5.8 m
Newcastle West Distributor Road	€2.1 m
Askeaton Swimming Pool	€0.4 m
Kilmallock Sewerage Scheme	€1m
Community Sport Cultural Grant Scheme	€1.6 m
300k per area for road schemes	€1.5 per annum

**Photo of project which was completed in 2007 and funded through the Development Fund:**



Maiden Street, Newcastle West - BEFORE



Maiden Street, Newcastle West - AFTER



## Service Indicators

	2005	2006	2007
<b>P: Planning and Building Control</b>			
<b>P 1: Planning Applications - Decision Making</b>			
<b>INDIVIDUAL HOUSES</b>			
No. of applications decided	1047	755	886
No. of decisions decided within 8 weeks	367	212	274
No. of decisions which required the submission of further information.	598	502	568
No. of decisions where an extension of time was agreed to by the applicant, under Section 34(9) of the Planning and Development Act 2000	70	40	32
Average length of time taken (in days) to decide a case where further information was sought	80.16	80.92	80
% of grants	77.36	79.07	77.09
% of refusals	22.64	20.93	22.91
% of cases where the decision was confirmed, with or without variations, by An Bord Pleanala	83.78	84.21	77.42
% of cases where the decision was reversed by An Bord Pleanala	16.22	15.79	22.58
<b>NEW HOUSING DEVELOPMENT</b>			
No. of applications decided	140	123	108
No. of decisions decided within 8 weeks	34	31	35
No. of decisions which required the submission of further information.	103	89	72
No. of decisions where an extension of time was agreed to by the applicant, under Section 34(9) of the Planning and Development Act 2000	5	6	2
Average length of time taken (in days) to decide a case where further information was sought	81.55	81.17	84
% of grants	78.57	82.11	68.52
% of refusals	21.43	17.89	31.48
% of cases where the decision was confirmed, with or without variations, by An Bord Pleanala	73.33	66.67	66.67
% of cases where the decision was reversed by An Bord Pleanala	26.67	33.33	33.33
<b>OTHER: NOT REQUIRING EIA</b>			
No. of applications decided	1137	1424	1680
No. of decisions decided within 8 weeks	768	934	1190
No. of decisions which required the submission of further information.	325	469	484
No. of decisions where an extension of time was agreed to by the applicant, under Section 34(9) of the Planning and Development Act 2000	22	11	4
Average length of time taken (in days) to decide a case where further information was sought	81.91	79.12	79
% of grants	94.72	95.08	94.52
% of refusals	5.28	4.92	5.48
% of cases where the decision was confirmed, with or without variations, by An Bord Pleanala	73.33	76	68.85
% of cases where the decision was reversed by An Bord Pleanala	26.67	24	31.15

## Service Indicators

	2005	2006	2007
<b>OTHER: REQUIRING EIA</b>			
No. of applications decided	7	3	7
No. of decisions decided within 8 weeks	1	2	3
No. of decisions which required the submission of further information.	6	1	4
No. of decisions where an extension of time was agreed to by the applicant, under Section 34(9) of the Planning and Development Act 2000	0	0	0
Average length of time taken (in days) to decide a case where further information was sought	104.67	103	87
% of grants	100	33.33	85.71
% of refusals	0	66.67	14.29
% of cases where the decision was confirmed, with or without variations, by An Bord Pleanala	0	100	100
% of cases where the decision was reversed by An Bord Pleanala	0	0	0
<b>P2 - PLANNING ENFORCEMENT</b>			
Total number of cases subject to complaints that are investigated	340	412	696
Total number of cases subject to complaints that are dismissed	88	136	99
Total number of cases subject to complaints that were resolved through negotiations	237	97	131
Number of enforcement procedures taken through warning letters	212	148	413
Number of enforcement procedures taken through enforcement notices	128	123	276
Number of prosecutions	15	30	18
<b>P3 - PUBLIC OPENING HOURS</b>			
Average number of opening hours per week	33.33	33.33	33.33
<b>P4 - CONSULTATIONS</b>			
Number of pre-planning consultation meetings held	520	912	556
Average length of time (in days) from request for consultation with local authority planner to actual formal meeting for pre-planning consultation.	19	43	46
<b>P5 - BUILDINGS INSPECTED AS A PERCENTAGE OF NEW BUILDINGS NOTIFIED TO THE LOCAL AUTHORITY</b>			
	22.55	15.25	16



**Jimmy Feane**  
Director of Housing

# Housing



## Housing

*To ensure that all people of County Limerick have adequate accommodation appropriate to their needs.*

The year 2007 was the fourth year of the 5 year Housing Action Plan and the following are the works undertaken.

**A total of 102 houses were under construction in the following towns and villages at 31st December, 2007:**

Location	No. of Houses
Carrickerry	10
Newcastle West	22
Mountcollins	8
Kilfinane	19
Bruff	16
Caherconlish	10
Pallaskenry	10
Tournafulla	7
<b>Total</b>	<b>102</b>

Another 34 houses were purchased at various locations around the County and demountable type dwellings were provided for 4 applicants.

**A total of 86 houses were completed in the following locations and made available for letting:**

Location	No. of Houses
Pallasgreen	21
Kilmallock	6
Abbeyfeale	11
Murroe	20
Castleconnell	1
Castleview, Newcastle West	4
Ballingarry	4
Templeglantine	8
Hospital	10
Rural House Coonagh	1
<b>Total</b>	<b>86</b>



Fr. Casey Close, Abbeyfeale



## Applications for Housing Assistance

Scheme	Applications	Approvals	Total Value of Approvals
			€
Shared Ownership Scheme	8	0	895,000
Affordable Housing (Part V)	84	11	Nil
House Purchase Annuity Loan	0	0	Nil
Tenant Purchase Annuity Loan	8	3	239,900
House Improvement Loan	1	0	Nil
Disabled Persons Grant	360	355	2,090,325
Essential Repairs Grant	112	85	533,814
Caravan Loans	2	2	12,093

Design works are ongoing on the provision of 50 housing units in various locations for 2008. Total expenditure for the construction and purchase of houses for letting together with the provision of traveller accommodation came to approximately €27m.

At the 31st December 2007 the Council owned 1,954 dwellings which were occupied by its tenants.

## Voluntary Housing

During 2007, the following units of accommodation were provided by the Voluntary Housing Sector.

Location	No. of Houses
Doon (Brothers of Charity)	12
Kilmeedy	2
Ballylanders (St. Josephs)	11
Athea	2
Knockong	3
<b>Total</b>	<b>30</b>
Cluid Newcastle West	42
	<hr/>
	72

Works in progress, including pre-construction was ongoing on the following schemes:

Location	No. of Houses
Croom	8
Cappamore	10
Newcastle West (St Vincent de Paul)	6
Doon	9
Oola	27
Ballylanders	10
Bruree/Rockhill	6
Feohanagh (Brothers of Charity)	9
Bruff (Brothers of Charity)	4
Caherdavin (Brothers of Charity)	1
Abbeyfeale (Cluid)	12
Newcastle West (Cluid)	13
<b>Total</b>	<b>115</b>

The Community & Voluntary Housing Forum met 4 times and discussed a range of matters relating to the Voluntary Housing Sector's activities.

This year also saw the setting up of County Limerick Housing Services Company. Ms. Louise Kennedy was appointed as manager. This pilot initiative will run for 3 years. It aims to deliver a variety of services to the member Voluntary Housing Associations in Co. Limerick. Services will include:

- Housing Management/Maintenance.
- Planned Maintenance.
- Housing Care & Development.

Other statistics relating to the Housing Section's activities in 2007 are:

- 944 housing applications were considered to be in need of Council housing.
- There were 204 Housing Allocations made comprising newly constructed houses and casual vacancies.
- Rental income for the year came to €4,403,707. The average rent paid by Council tenants is €45 per week.
- The total cost of maintenance of housing stock was €938,000.
- The average all-in cost including land costs, fees, etc. varied between €151,000 for a two-bedroomed one storey house and €168,000 for a 3 bedroomed unit.
- 3 No. privately owned houses were refurbished under the Improvement Works in Lieu of Rehousing Scheme.
- 11 No. Affordable Houses were provided in private developments at Dooradoyle, Castletroy and Newcastle West. These houses were provided in accordance with Part V of the Planning & Development Act, 2000.
- Works were completed on 135 rented Local Authority Houses under the installation of Central Heating/Smoke Alarm/Insulation Programme at a cost of over €1,083,019.

### Traveller Accommodation

The delivery of Traveller Accommodation is a key activity of the Housing Department and further progress was made in meeting the targets set out in the Traveller Accommodation Programme for County Limerick. An additional 22 Traveller families were provided with permanent accommodation during the year.

The Accommodation Programme for the Traveller Community 2005-2008 was reviewed during the year and no amendments were made to the plan. Since the adoption of the programme in 2005 three Halting Sites have been constructed including a site in Kilmallock which was completed in 2007.

Seventeen families were provided with housing in a new housing development in Rathkeale and families were also provided with housing in Abbeyfeale, Askeaton and Newcastle West. Social Work and other housing supports, including pre-tenancy training were provided in 2007.

The Council is also actively involved in an inter-agency plan for the delivery of all services to Travellers which should ensure that all services are provided in a co-ordinated manner. It is envisaged that this approach will lead to better outcomes, improve access and participation for Travellers.

### Homeless Services

Two specialist staff provide support and services to persons presenting as Homeless in County Limerick. During the year, one hundred and eighty families sought assistance from the Homeless Unit and ongoing support is provided for persons who are either homeless or potentially homeless. Research indicates that the main reasons for homelessness in the county are alcohol/addiction, family disputes, eviction from private rented

accommodation and mental health issues.

Financial assistance is provided to service providers who provide accommodation for Homeless persons in the County and the role of the voluntary sector is recognized and supported in this area.

The Homeless Forum for County Limerick met on 4 occasions in 2007 and working groups were established in 2007 to assist in the implementation of the Homeless Strategy.

The strategy outlines the needs of homeless persons and contains specific actions that will address these needs. It considers all aspects of homelessness, including accommodation and care needs. The provision of care and support services are essential if the needs of homeless persons are to be fully addressed and to achieve targets set out in the strategy.

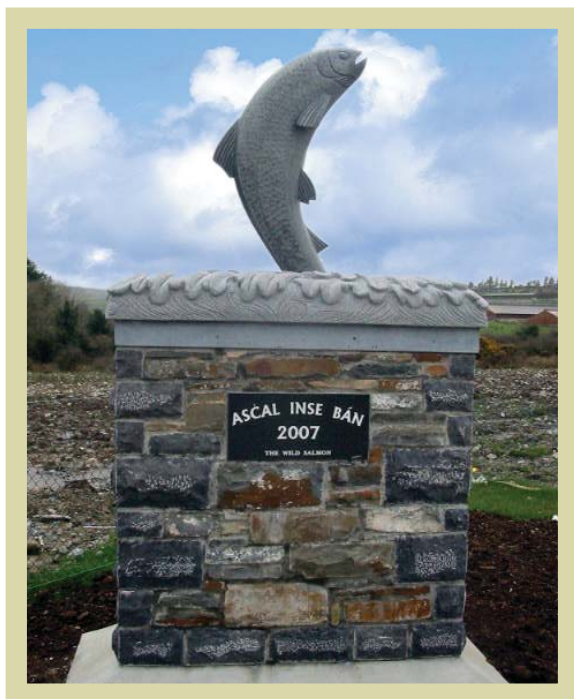
### Estate Management

The Housing Services Officer met with several groups of tenants and residents throughout 2007. A total of 7 Pre-Tenancy courses were delivered by the Housing Services Officer to over seventy families throughout the county, explaining their rights and responsibilities as tenants and the responsibilities of the Council as a Landlord. All new tenants are visited after a settling in period. Tenants are encouraged to have a sense of pride in the place they live and the Council supports the formation of Residents' Associations.

A Tenant Support Policy Document was drafted by The Housing Services Officer and this document, was considered by the Housing Policy Committee, the HSE and the Gardai prior to being adopted by the full Council at the December meeting. The objective of the newly adopted 'Tenant Support Policy' is to support local authority tenants by upgrading estates, improving facilities and tackling incidences of anti-social behaviour. To this end the 'Tenant Support Policy' puts the appropriate structures in place to work with tenants on a partnership basis so that sustainable communities are created.



Ascal Inse Bán, Templeglantine



Artistic Feature - Ascal Inse Bán, Templeglantine

The regeneration of Sharwood / Castleview was progressed with phase 11 completed in 2007. A Sustainability Forum was formed which includes members of the Housing Social Inclusion Unit as well as Area Staff, Environment Staff, The Local Community, Gardaí and Residents of both Estates. The Forum meets every second month to discuss progress and issues with regard to both the estates and the residents therein. The Committee Members of the Forum, together with the Housing Services Officer went on a trip to view a football pitch on another County Council Estate, which is to form part of the Phase 111 of the on-going development at Sharwood / Castleview.

A community house provided by the Council in the estate provides residents the opportunity to partake in community based activities. In 2007 a wide range of community based activities were provided by different agencies and this has been very successful.

Other capital works undertaken in 2007 include works in Abbeyfeale, Glin, and Croom.

## Service Indicators

		2007	2006	2005
<b>H;</b>	<b>HOUSING</b>			
<b>H.1</b>	<b>Housing Vacancies</b>			
	Total Number of dwellings in local authority stock	1916	1860	1734
	Overall % of dwellings that are let	96.60	97.10	98.10
	Overall % of dwellings that are empty	3.40	2.90	1.90
	% of empty dwelling subject to major refurbishment schemes	4.52	5.56	24.24
	% of empty dwellings unavailable for letting	91.89	96.3	32
	% of empty dwellings available for letting	3.59	3.70	68
<b>H.2</b>	<b>Average time taken to re-let dwellings available for letting</b>	5.37 weeks	12 weeks	4.5 weeks
<b>H.3</b>	<b>Number of repairs completed as a percentage of the number of valid repair requests received</b>	80.425	85	85
<b>H.4</b>	<b>Average time taken to inform applicants of Local authority's decision on applications for</b>			
	- the shared ownership housing scheme	8.4 days	9 days	14 days
	- housing loans schemes	4.8 days	5 days	14 days
	- local authority housing	66 days	76 days	34 days
<b>H.5</b>	<b>Traveller Accommodation</b>			
	Total number of traveller families accommodated			
	As a percentage of the targets set in the local Traveller Accommodation Programme	92	166	78





**Paul Crowe**  
Director of  
Transportation and  
Water Services

# Transportation and Water Services



## Roads

*To provide and maintain a safe and effective transportation network within the County incorporating the principles of sustainable development, social inclusion and environmentally friendly work practices.*

### Major Roads Schemes

#### Limerick Southern Ring Road Phase 2

Work on one of the biggest civil engineering projects ever undertaken in the region, the Limerick Southern Ring Road Phase II (also now more commonly known as the Limerick Tunnel Project), commenced in August 2006 and is scheduled for completion in September 2010.

In addition to a 675m long tunnel across the River Shannon, the Project also includes the construction of 9.75km of dual carriageway, 2.3km of single carriageway, four major interchanges, a 750m long causeway across Bunlicky Lake, 11 over bridges, 6 underpasses, eight culverts and two toll plazas. Very significant progress has been made to date including: the placement of over 3 million cubic metres of road embankment fill material (i.e. approx. 270,000 truck loads), construction of the tunnel casting basin (600m in length), the casting of three complete tunnel elements (each element is 100m long, 8.5m high, 25m wide & weighs 20,000 tonnes), preparation of south cut & cover cofferdam and advancement of a number of the Bridge structures.

The Tunnel Project is the final piece of the jigsaw which will ensure that traffic coming from any national road can by-pass the city. On completion, the capacity will be there to remove up to 40,000 vehicles per day, freeing up existing routes suffering from the gridlock now experienced by many on a daily basis. This will bring obvious environmental and commercial benefits to Limerick City and suburbs and will also lead to significant economic advantages for the entire Mid-West Region.



Limerick Tunnel Project

### **N7 Nenagh to Limerick High Quality Dual Carriageway**

The proposed N7 will form part of the Dublin to Limerick National Primary Route and covers the section of the N7 between the existing Nenagh Bypass and the Newport Junction on the Limerick Southern Ring Road. This 36km long scheme consists of the construction of 29 principal structures and the upgrade of a further 11 structures on the Nenagh Bypass. It also includes for the construction of 4 grade separated interchanges and a further 14 at grade junctions. The contract was awarded in November 2006 to the Consortium Bothar Hibernian.

Work continued through 2007 on important elements including Earthworks, Drainage and Structures and the widening of the existing Nenagh Bypass to Dual Carriageway cross section.

Following the completion of this major project, and the adjacent Nenagh to Castletown scheme scheduled to start in 2008, a continuous Motorway/High Quality Dual Carriageway will connect Limerick and Dublin.

### **N21 Adare Bypass**

This scheme is currently under consideration by the NRA and is scheduled to undergo a peer review in 2008.

### **N21 Abbeyfeale to Adare**

This project includes for the identification of a preferred route from the county bounds with Kerry to the western terminus of the proposed N21 Adare Bypass.

2007 saw the progression of the Constraints Study for this 41 km long project. A public consultation process was held in late 2007 and the Final Constraints Study report is scheduled to be submitted to the NRA for approval early in 2008.

### **N20 Croom to Patrickswell**

This project forms part of the Atlantic Corridor route as identified in the Government's Transport 21 Strategy.

A procurement process to appoint engineering consultants commenced in 2007 and culminated in the invitation of five firms to tender for the project in December 2007.

## **Mid West National Road Design Office**

2007 saw the Mid West National Road Design Office achieve CPD accreditation with Engineers Ireland. CPD stands for Continuous Professional Development and is designed to support life long learning by stimulating and recognising good organisational practice in the areas of Professional Development for Engineer and Technical staff. This scheme has received formal backing from the Department of Enterprise Trade and Employment.

This accreditation complements the office's ISO 9001:2001 accreditation with the NSAI. The achievement and retention of both of these industry recognised standards has involved the co-operation and support of both management and staff.

November 2007 saw the Mid West National Road Design Office move to new premises at Lissanalta House, Dooradoyle. The office had been based for the previous seventeen years in Mungret College.

## **Main Road Works Programme**

The following schemes were completed in 2007:

### **1. N20 Road Improvements**

This Scheme included for the road pavement overlay of approximately 2.6kms of the N20 from Hynes Cross to O'Rourke's Cross.

### **2. N21 Road Improvements**

This Scheme included for the road pavement overlay of approximately 5.6kms of the N21 from Cregans Cross to Newcastle West & Templeglantine to Goulbourn Bridge (Devon Cross).

### **3. N24 Road Improvements**

This Scheme included for the road pavement overlay of approximately 3.4kms of the N24 from Oola to Brooks Bridge and from Beary's Cross to Kishiquirk.

### **4. N69 Road Improvements**

This scheme included for the road pavement overlay of 2.1kms of the N69 from Glin East towards Loughill and another section at Clarina Cross. This Scheme also included for the installation of new traffic signals at Clarina Cross.

### **5. N21 Abbeyfeale Traffic Calming**

This Scheme included for the construction of footpaths, traffic islands, traffic signals, road markings, and signals on the eastern approach to Abbeyfeale.

### **6. Low Cost Remedial Scheme**

Low cost remedial schemes consisting of new road markings and signage, were completed at 10 no. junctions on the N69 and 2 no. junctions on the N24. New public lighting was erected on the N20 at O'Rourke's Cross.

### **7. Kilfinane Urban Renewal**

This Scheme included for the improvement of the town square works included a split-level centrepiece, footpaths, road reconstruction, public lighting, service diversions, landscaping, signage and road markings.

### **8. R445 Ennis Road Improvements**

This Scheme included for the construction of an inbound bus lane from Coonagh Roundabout to Caherdavin Cross. Works also included for footpaths, cycle lanes, traffic signals, public lighting, road markings and signage.

### 9. Lower Maiden Street, Newcastle West

This Scheme included for road pavement reconstruction, footpaths, service diversions, public lighting, drainage, ducting, road markings and signage.



Lower Maiden Street, Newcastle West

### The following Schemes commenced construction in 2007:

#### 1. N7/N24 Ballysimon Interchange Improvements

This Scheme includes for the construction of traffic calming measures on the N24 and the installation of traffic signals at the junction of the N24 and N7 Limerick Southern Ring Road on/off ramps. This scheme is due to be completed in March 2008.



N7/N24 Ballysimon Interchange Improvements

#### 2. Croom Distributor Road

This Scheme includes for the construction of 550m approximately of new road at Skagh, Croom. Works include for footpaths, cycle lanes, public lighting, water-mains and drainage. Scheme to be completed in March 2008.



### EU Co-Funded Specific Improvement Schemes

The Council received over three million euro between the Department of the Environment, Heritage and Local Government and EU Structural Funds in 2007 to carry out a number of road schemes which included:-

#### LP1117/1118 Plassey Park Road Improvements

This Scheme included for improvement works on approximately 1.2kms of Plassey Park Road from its junction at Milford Road to the Kilmurry Road and form part of the original scheme carried out in 2006. Works include for road reconstruction/overlay, footpaths, cycle-ways, public lighting, service diversions, road markings, and signage. Scheme to be completed in April 2008.

#### Cork Road Bridge

This scheme included for construction of a new bridge adjacent to the "Bridge of Tears", the construction of a new roundabout and realignment of the Regional Roads R522 and R520.

#### R503 Limerick to Thurles

This scheme included for widening of the existing road embankment over soft ground. Works include for earthworks, drainage (including vertical drainage) service diversions and road pavement reconstruction.

### Low Cost Accident Remedial Measures

Low Cost Accident Remedial Schemes were carried out at 8 junctions in the National Routes. Works typically included for improved road markings and signage. Works were carried out at the following locations:-

#### Non – National Roads

The non national roads budget, excluding public lighting, was €22.425 million. This comprised of a Department of Transport allocation of €17.573m and €4.852m from Councils own resources. Works carried out included:

Type of Road	Surface Dressing	Road Re-Construction
Regional	28.24 kms	19.12 kms
Local	167 kms	96 kms

The grant allocation for Specific Improvement Grant schemes was €3.13m in 2007 and nine projects received funding under this scheme. These grants were concentrated on the upgrade of important Regional Roads in a number of different areas of the County.

#### Public Lighting

The present stock of 10,500 public lights in Co. Limerick cost €1,235,225 between associated energy and maintenance charges.



## Low Cost Safety Improvements

A grant of €352,005 was allocated for Low Cost Safety Improvements on Regional and Local Roads and improvement measures were carried out or commenced at a number of different locations throughout the County. These works typically included road realignment with enhanced road markings and signage. Works were carried out at the following locations:

- **R513** - Wards Cross;
- **R523** - Clonagh, Ardagh;
- **R521/R523** - Ardagh village;
- **R511** - Glenogra Bridge, Fedamore;
- **R512** - Tullabracky, Bruff;
- **R526** - Patrickswell;
- **L1144** - Derrybeg Crossroads,
- **L1209/1210** - Chawke's Cross, Granagh.

## Road Safety Education

### Cycling Safety Training

2007 proved once again to be a very successful year for the Cycling Safety & Skills programme with a total of 534 pupils from twenty one national schools participating from all over the County.

This programme includes cycling safety theory, bicycle care and practical bicycle safety and skills training. The course is conducted over a six to seven week period on school grounds and is planned to work into the Physical Education timetable.

This programme is subvented by Limerick County Council and also received support funding from the Road Safety Authority in 2007.

Feedback from teachers, pupils and parents continued to be extremely positive and encouraging during the year. Limerick County Council is delighted to be associated with this initiative which has such a beneficial impact on road safety for school children and would hope that this programme will continue to be received with such enthusiasm during 2008.

### Junior School Warden Scheme

Junior School Wardens in Rathkeale, Kilmallock, Ballylanders all continued to provide safe crossing facilities for their fellow schoolmates in 2007. Over the years there has been huge commitment from teachers, pupils, Gardai and parents to ensure the success of the scheme, which has been in operation throughout the County since 1975.

In October, 2007 the Junior School Warden Scheme in Kilmallock ceased operation after some thirty years of service to the pupils of O'Healy & O'Rourke National School. Sincere thanks to the principal Sr. Theresa Murphy for her assistance and support of the scheme over the last decade.

The annual regional Junior School Warden final was held in Ballylanders, Co. Limerick in May 2007. Schools from Kerry, Limerick, Clare, South Tipperary and Waterford participated.

The boys and girls from Ballylanders National School took first place in the competition, once again in 2007 with schools from Kerry and Tipperary taking second and third place. Congratulations to the winning teams and well done to all who participated.



Kilmallock Junior School Wardens

## Horticulture

National Tree Week 2007 took place from 4th to 11th March and was jointly sponsored by O2 and Coillte. Limerick County Council launched the week with the planting of an oak tree in the grounds of Presentation Close, Hospital, Co. Limerick by Cllr. Eddie Creighton, Cathaoirleach.



Cathaoirleach Cllr. Eddie Creighton planting an oak tree in the grounds of Presentation Close Hospital with members & residents of Presentation Close & staff of Limerick County Council

7,000 saplings were delivered throughout the County to community groups and schools.

The section also dealt with a number of dangerous trees and supervised the inspection and cutting of same during the year. This included the removal of 180 Columbian Poplars on N24 which will be replaced with 180 Alders (*Alnus Glutinosa Imperialis*).

Cyprus Laylandii trees were removed from Desmond Drive, Adare and replaced with Lime Trees.

30,000 bedding plants were distributed to community groups in early summer. The Horticulture Section provided expert advice and guidance for Tidy Towns Committees and Community Councils around the County during the year.

#### **Grass/Hedgecutting**

The grass-cutting programme continued with approximately 502 acres of grass cut 32 times during the year. Grass/hedgecutting on the National Primary, National Secondary roads and the City Environs has curtailed the spread of weeds as they are prevented from going to seed.

The Horticulture Section control the use of weedspraying chemicals by the Council. This has reduced the quantity used and only two of the most environmentally friendly chemicals are permitted.

#### **SPECIFIC PROJECTS UNDERTAKEN INCLUDE:**

##### **Clare Glens**

On going maintenance and repairs were carried out on bridges and steps.

##### **Lough Gur**

Maintenance of the green areas was undertaken throughout the year, including grass cutting and pruning of trees.

##### **Adare Town Park**

The Horticulture Section carried out routine maintenance of green areas, shrubs and borders. The Riverbank Walk was widened to 2 metres and tarmacked to allow wheelchair access. Two kissing gates and 12 seats were installed.

##### **Newcastle West**

Maintenance work and tree pruning was undertaken in the Demesne, Newcastle West. A new car park was created and paths tarmacked. The avenue at the entrance was extended and tarmacked and new mature trees planted.

##### **General Landscaping**

- St Paul's Park, St Nessian's Road.
- Mungret Recycling Centre.
- Tree Replacement at Cement Factory
- Landscaping Approach road to Abbeyfeale.
- Landscaping Approach road to Newcastle West.
- Planting & landscaping at Askeaton Swimming Pool
- Tree planting in The Square, Kilfinane.
- Tree planting at Kilmallock playground.
- Shrub planting at Mulcair Drive, Annacotty.

##### **Roundabouts**

Trees were planted and bark mulch laid at 9 roundabouts and a total of 20 roundabouts maintained. Tree replacement was also carried out on 4 additional roundabouts which were damaged in car accidents.

#### **Golden Mile**

Introduced in 2004 the Golden Mile competition is sponsored by the Non National Roads Section of Limerick County Council. The purpose of the competition is to foster pride in the country road-scapes. Competitors are asked to select an interesting, safe mile and are judged on a variety of aspects, including Trees, Hedges, Communal input, Structures, Litter and Safety.

There were 10 entrants in 2007. The runners-up were Knocklong Tidy Towns Association and Croom Walking Club. Broadford Community Development Association were worthy winners in 2007, they have entered their mile since the start of the competition and each year they have made significant improvements along the route.



## Health and Safety

The Council is required by statute to provide for the health and safety of its staff and persons affected by County Council activities. In this regard, a number of services are co-ordinated by the Health and Safety Section.

### Review and dissemination of Safety Statements and Procedures to comply with Regulations

A complete review of the Safety Statements and regulatory compliance documents was undertaken to take into account the Safety Health and Welfare at Work Act 2005 and the General Application Regulations 2007.

### Introduction of the 'Guidance for the Control and Management of Traffic at Roadworks'

One of the main developments in 2007 was the introduction of the new document 'The Guidance for the Control and Management of Traffic at Roadworks'. This will see significant changes in the management of traffic at roadworks. Early in 2008/2009 the relevant Construction Skills Certification Scheme training (CSCS) for Signing, Lighting and Guarding at Roadworks will be carried out as well as other new training requirements as outlined in the Safety Health and Welfare at Work Construction Regulations 2006.

### Internet Health and Safety Training Programme

The internet Health and Safety training programme was upgraded in 2007 and it is proposed that it will be fully implemented in 2008.

An online Safety Management System is also in place.

#### Health and Safety training carried out in 2007

- Induction training for new personnel
- Fas Safe Pass Training
- CSCS Training
- Signing Lighting and Guarding at Roadworks
- Other relevant Training



Road Safety Management System Exercise – Rathkeale Area

## Water Services

*To ensure the provision of adequate water supplies and wastewater disposal facilities in a manner which safeguards the environment and public health and underpins the sustainable development of the County*

The major business objective of the Water Services Department is to ensure the provision of adequate water supplies and wastewater disposal facilities in a manner which safeguarded the environment and public health and which underpinned the sustainable development of the County and this was substantially delivered during 2007.

It is acknowledged that a need still remains to improve infrastructure in certain locations and these deficiencies are being addressed through the various capital programmes.

Limerick County Council during 2007 disbursed over €787,763 in operational subsidies to Group Water Schemes to permit these groups to provide water to their members. Individuals were assisted to upgrade their private well sources through the paying of €170,903 in grants.

In association with the Health Services Executive, Limerick County Council continues to strictly monitor its water supplies through the regular testing of water samples and the daily site sampling by caretakers of water supplies. The introduction of the SCADA system has also allowed for remote access to the sites at County Hall and the Area Offices creating a more efficient system of monitoring and control.

### Major Capital Schemes

The Council's aim is to provide water and wastewater services to existing settlements and also to ensure that infrastructural deficiencies do not hinder the growth of those settlements.

To progress this aim, the announcement by the Department of Environment, Heritage and Local Government of the investment of €113 million over the period 2007-2009 is to be welcomed. Limerick County Council acquired this funding through the compilation and submission of an Assessment of Needs. This Assessment enables Limerick County Council to develop 'an overall strategic investment plan for the medium to long term and to set out a programme of works to meet the identified water services needs'. The overall estimated value of the schemes identified in the latest Assessment by Limerick County Council is €163 million.



## Sewerage Schemes

In recent years new public sewerage schemes have been constructed to serve the villages of Castleconnell, Fedamore and Croagh. Under the Water Services Investment Programme, significant progress has been made in relation to detailed design of schemes to serve Kilmallock, Patrickswell and Adare and it is anticipated that preparations will be in place to allow all, excluding Adare, to proceed to construction during 2008. In addition planning has commenced on projects to serve Askeaton, Foynes, Shanagolden, Glin, Athea, Dromcollogher, Hospital, Pallasgreen and Bruff. The completion of these schemes in the coming years will help achieve one of the major aims of the County Development Plan i.e. the revitalisation and rejuvenation of the County's towns and villages.

## Water Schemes

The Council, in co-operation with Limerick City Council, is continuing to progress the development of trunk water mains systems into County Limerick. This will be facilitated by the planned upgrade of the City Council's water treatment plant at Clareville and for which a contractor has now been appointed. Elements of these trunk mains have already been constructed in conjunction with major road projects in the city environs. Construction of further elements to serve Croom is likely to proceed during 2008 and planning is being progressed on a separate extension of the system to serve areas of East Limerick such as Caherconlish, Cappamore, Pallasgreen, Doon and Oola. A Contract has been signed for the Patrickswell Trunk Watermain and work began in 2007 for the upgrading of the Castleconnell Watermains.

Approval was secured in 2006 from the Department of Environment Heritage and Local Government for a dedicated project team to accelerate the advancing of the major capital schemes programme and staff were duly appointed in 2007.

## Small Towns and Villages Initiative

The Small Towns and Villages Initiative adopted by the Council in 2003 has proved to be a very useful instrument in delivering new and improved water services infrastructure. It promotes the economic development of the County's smaller population centre and is a partnership with the private sector. The developer provides water services infrastructure in excess of his/her development requirement. In return the Council make a financial contribution and grants the developer a specified period during which anybody else wishing to avail of a connection has to reimburse the developer on a pro rata basis depending on the number of connections. Thereafter the infrastructure is transferred to the ownership of the Council. The small towns and villages benefit from new or improved infrastructure, the funding of which would be low in the DOELG priority list. There is no priority list and the scheme is developer led.

Construction of new plants in Caherconlish, Bruree, Pallaskenry, Adare and Doon was completed during 2007.



Caherconlish New Waste Water Treatment Plant

## Water Conservation Project

The Water Conservation Project continues to have a considerable positive impact on the delivery of water to the people of County Limerick. Approximately, 734 leaks were identified in the network during the year.

The installation of district metering commenced by direct labour in conjunction with the Area Offices. The majority of the works were carried in the Newcastle West Area and Annacotty Area. In the Newcastle West Area, some of these meters now provide information, e.g. flow rates etc, on the Abbeyfeale Water Supply System via telemetry, to the treatment plant in Abbeyfeale.

In total 78 no. meters were installed at various locations across the county by the Area Offices at end of 2007.

## Non Domestic Metering

The non-domestic metering project was undertaken by Limerick County Council, in accordance with the National Water Services Pricing Policy, which requires that all non-domestic customers be charged for water and wastewater services on the basis of metered consumption.

A contract was signed between Limerick County Council and Treatment Systems Services Ltd. (TSSL), a division of Coffey Construction, in November 2006 for the installing of meters, developing a database of non-domestic users and integrating the metering systems into the existing billing structure within the County. This contract has progressed greatly during the year and is now nearing completion.



Carnane New Reservoir (capacity 100,000 gals)



Carnane New Water Treatment Plant

## Rural Water Programme

A total block grant allocation of €7.1m was allocated to the Rural Water Programme from the Department of the Environment, Heritage & Local Government. The following are the measures, which were progressed during the year: -

### DBO Project for Group Water Supply Schemes

In Limerick, 18 privately sourced schemes are participating in the Design Build and Operate project for the provision of modern treatment water facilities, which will enable the groups to comply with the requirements of the Drinking Water Regulations. The contract for the project was signed in October, 2005 and the construction phase of the project was completed for the majority of schemes in 2007. The schemes have now entered the Operation and Maintenance Phase of the project. During 2007, €1.1m was invested in the project.

### Advance and Enabling Works for the DBO Project Bundle

Limerick County Council recognised that a considerable amount of work was needed to ensure that the infrastructure of the group water schemes participating in the DBO project, was upgraded to operate in the most efficient and cost effective manner prior to the completion of the main DBO project. Works involved critical watermains refurbishment, reservoir replacement and universal metering in order to promote water conservation in private schemes. During 2007, €534,000 was invested in Advance DBO works and included the following projects:

- Booster pumps construction completed at Granagh and Kilfinny
- Reservoir construction completed at Carnane
- Pipeline construction completed at Kilfinny, Ballybricken and Glenstal

### Refurbishment Grants to Existing & New Group Water Supply Schemes

Watermains refurbishment works were carried out on Ballinvreena, Kilfinny, Cappagh, Kileedy, Clovers and Stumble. During the year €1m was invested in refurbishment/upgrade works.

### Refurbishment and Takeover of Group Water Supply Schemes

Upgrading works were undertaken on Inch St. Laurence, Ashroe, Feenagh, Glenastar and Ballyshonick/Kilcornan.

### Five schemes were formally taken in charge during 2007

Scart/Highmount, Killinure/Brittis, Elton, Coolcappa and Templebraden.

### Subsidy to Group Water Supply Schemes

The Council continues to provide grant aid to private group water schemes to assist them in meeting their annual operational expenses. The total value of grants paid under this action in 2007, amounted to €787,763.

### Grants for Individual Well Supplies

The processing of well grant applications also continued and grants to the total value of €170,903 were paid.

### Small Capital Schemes

Grants in the amount of €750,000 were received from the Department of the Environment, Heritage & Local Government and were invested in a programme of improvement works on the both public water supply and sewerage schemes. This grant aid of 75% with a contribution of funding by Limerick County Council of 25% allows resources to be invested, ensuring that the water services infrastructure is improved and upgraded on an ongoing basis. A two year rolling programme of projects was prepared and submitted to both the Rural Water Monitoring Committee and to a full meeting of the Council.

Examples of works undertaken include ph treatment on the Galbally water supply, well drilling at Banogue and Ballyagran, pump replacement at Clareville and the provision of aluminium sludge holding tank at Abbeyfeale Waste Water Treatment Plant.

### Rural Water Monitoring Committee

Four meetings of the committee took place. This group plays an active role in monitoring the projects adopted under the rural water programme and help to assist private schemes to meet the challenges presented by new national policy and legislation.

### Website

The Water Services website was upgraded during the year. All the relevant forms in relation to the Rural Water Programme are now available electronically on the website.

### Burial Grounds

The focus again this year was in implementing the key recommendations of the Burial Ground Maintenance and Development Strategy which was adopted by the Council in 2003, specifically under three headings: (a) Capital Grants to the Community Groups providing new facilities (b) increased maintenance grants to voluntary groups and (c) identification of areas within old burial grounds for use/re-use as burial plots. This five year strategy is coming to an end and will be reviewed in 2008.

The Council encourages the work of the local burial ground committees by means of a grant each year. Over 106 groups who look after 164 burial ground received the grant in 2007. Community led Burial Grounds which were completed during the year include Ballingarry, Mountcollins and Oola.

At the end of 2007 Draft Burial Ground Bye Laws were presented to the Transportation & Infrastructural Strategic Policy Committee and were to be discussed further in 2008. The aim of these Bye Laws is to act as a support document for caretakers and others involved in the proper management of burial grounds, providing them with a modern support management code to regulate the use of their burial grounds and to educate all with the different traditions of the multi cultural society in which we now live, regarding burial of their deceased. These Bye Laws also aim to provide clarity around the erection of monuments, planting of trees, playing of music etc.

An important part of the Burial Grounds section is also the maintaining of records. In 2007 it was undertaken to transfer manual data from records registers to electronic format and to date the records of five burial grounds have been transferred.

## Service Indicators

		2005	2006	2007
<b>R:</b>	<b>ROADS</b>			
<b>R1:</b>	Local Roads Surface Dressed (Sq. Mt.)	679,693 m <sup>2</sup>	711,652 m <sup>2</sup>	723,395 m <sup>2</sup>
	Regional Roads Surface Dressed (Sq. Mt.)	148,515 m <sup>2</sup>	178,777 m <sup>2</sup>	178,742 m <sup>2</sup>
	% Local Roads Surface Dressed	6.5%	5.7%	5.7%
	% Regional Roads Surface Dressed	5%	6%	5.9%



# Environment, Emergency Services and Consumer Affairs



**Gerry Behan**  
Director of  
Environment,  
Emergency Services and  
Consumer Affairs



## Environment

*To protect, conserve and enhance the natural and built environment of County Limerick*

This Directorate is responsible for a diverse range of functions and services. The principal divisions within the Section are as follows:

- Pollution Control and Water Quality Management
- Shannon International River Basin District
- Litter Management
- Waste Management
- Derelict Sites
- Energy Agency and Conservation
- Fire and Emergency Services
- Building Standards
- Veterinary Services
- Civil Defence
- Water Safety
- Corporate Projects

### Pollution Control and Water Quality Management

The Pollution Control Division is responsible for the implementation of Local Government Environmental Legislation in the following areas: air, water, noise and nuisance. It also has a general water quality monitoring and management role. Specific activities undertaken by the section include the investigation of water pollution incidents, licensing of discharges to waters and sewers, licensing of significant emissions to air, certification of dry cleaners and crash repair facilities under the Volatile Organic Solvents Regulations, monitoring of drinking water, urban waste water plants, rivers and lakes and carrying out farm surveys under the Nitrates Regulations.

### Water Quality Management

Water pollution is a major concern in County Limerick. Therefore much of the work of the pollution control section is devoted to this matter. Only 46% of rivers in County Limerick are classed as unpolluted, compared to a national figure of 62%. In addition, the Rivers Maigue and Deel, which drain the majority of the County, are the most polluted rivers in the Country, in terms of Phosphorous loading. Under the Phosphorous Regulations, 1998 the Council is obliged to achieve a significant improvement in river water quality by 2013. To this end, the Council has established a team consisting of an Agricultural Scientist and two Field Inspectors, with administrative and technical support to undertake a comprehensive programme of farm inspections and general pollution investigations. The team also undertakes investigative river monitoring, in accordance with the requirements of the Water Framework Directive, using the Small Streams Risk Score system.

Since the team was established in November 2002, farm surveys have been completed in the River Deel catchment and extended to other areas of the county where there are particular problems with water quality. In total, over 2800 farm visits have been carried out along with inspections of septic tanks, industrial and commercial premises and sewage treatment plants. The team works in close co-operation with individuals and community groups with a view to addressing the problems identified.

### The European Communities (Good Agricultural Practice for Protection of Waters) Regulations, 2006 & 2007

Also known as The Nitrates Regulations, this legislation specifies the manner in which certain farming activities are to be carried out in order to minimise the risk of water pollution.

These regulations are far more prescriptive than previous water pollution legislation and the primary responsibility for the enforcement rests with local authorities.

Farm yards are surveyed to assess compliance with the regulations and increasingly enforcement action is being taken under these regulations rather than under general water pollution legislation.

#### **Water Pollution**

Enforcement of Water Pollution Legislation is an important element in ensuring good water quality. In 2007, the Environment Section received 84 complaints relating to water issues, which resulted in 13 prosecutions under the Water Pollution Acts 1977 to 2007.

#### **Air Pollution**

In 2007, 33 complaints relating to air pollution or odour were investigated (excluding complaints relating to the burning of waste).

The Council is responsible for enforcement of The Volatile Organic Solvents Regulations 2002, which requires certain facilities, including dry cleaners, to register with the Council and to obtain a certificate of compliance with the regulations.

The Council is also responsible for enforcement of The Decorative Paints Regulations 2007. These regulations require all paint products placed on the market to comply with certain requirements with respect to solvent content and labelling. In addition, all crash repair or other vehicle refinishing facilities are required to register with the Council and to obtain a certificate of approval.

Both sets of regulations take effect from March 2007. In 2007, a register of facilities was established and advertisements were placed in the local press informing dry cleaners and vehicle refinishing facilities of their obligations under the regulations.

#### **Public health**

The Environment Section is responsible for public health issues covered by the Public Health Ireland Act 1878. Complaints relating to public health mainly involve problems such as overflowing septic tanks, rat infestations and dead animals.

#### **Noise Nuisance**

In 2007, 30 noise complaints were received. Under the Environmental Protection Agency Act 1992, the Council has the powers to serve abatement notices or take a prosecution in relation to noise nuisance. In one particularly serious case, legal action was initiated and is ongoing.

#### **Site Suitability Assessments**

Since June 2005, all site assessments for one off housing planning applications must be carried out in accordance with "Treatment Systems for Single Houses" (EPA 2000). A panel of approved assessors was set up by the Environment Section and only Site Characterisation Reports (SCR's) prepared by approved assessors are accepted for planning purposes.

All SCR's submitted with planning applications are reviewed by staff in the Pollution Control section and recommendations made to the planning section. To date over 2000 reports have been reviewed. The Pollution Control Section is also responsible for the regulation of the approved panel.

### **Environment Laboratory**

The Environment Laboratory is responsible for the following areas of work:

#### **Management Plan for Drinking Water Quality**

The laboratory monitors drinking water to ensure that the quality is legally compliant and fit for consumption by our customers and for group water scheme users. The laboratory also provides technical assistance as requested. In 2007, a total of 756 scheduled samples were taken. 3028 additional samples were taken as part of water supply quality incident investigation and resolutions and HSE monitoring.

#### **Management Plan for Urban Waste Water Treatment Plants**

This management plan ensures Limerick County Council's compliance with the requirements of the Environmental Protection Agency Act 1992 (Urban Waste Water Treatment) Regulations 1994 S.I. 419. In 2007 596 samples were taken, analysed and assessed from 44 discharge points.

#### **Management Plan for Surface Waters for Abstractions.**

The management plan includes the legal classification of drinking water treatment plants with surface water sources in the County and the legal quality standards that the raw water for these plants should meet. The plan sets out sampling frequencies and analysis required. This plan was complied with in 2007.

#### **Management Plan for Licensed Activities**

Limerick County Council licenses both discharges to waters and sewers in accordance with the Local Government (Water Pollution) Acts 1977 & 1990 and the associated Regulations. The laboratory is involved in the following way:

- License Review Programme
- Industry sampling programme
- Licensing Audit Programme

#### **Monitoring programme for river catchments and lakes**

Fifteen river catchments and two lakes were monitored in 2007 to assess compliance with the relevant regulations. In total, 696 samples were taken at monitoring stations throughout the County during the year.

In addition to the work outlined above the Limerick County Council Environment Laboratory moved into a purpose built new laboratory facility in Lissanalta House in 2007.

### **Shannon International River Basin District (IRBD) Project**

Limerick County Council is the Contracting Authority for the Shannon IRBD Project, which has been established with National Development Plan funding to assist the local authorities in the IRBD to meet the requirements of new European (Water Framework Directive) and Irish (Water Policy Regulations) legislation relating to water management. Ireland has been divided into eight river basin districts covering the whole of the island of Ireland, of which the Shannon (with a total area of 18,000 km<sup>2</sup>) is the largest - covering the natural drainage area of the River Shannon and the associated coastal areas of Clare, Limerick and Kerry. It extends into the functional area of eighteen

local authorities, with Limerick County Council identified in the Irish legislation as the Co-ordinating Local Authority for the Shannon IRBD. It is also an international RBD as a small portion of County Fermanagh in Northern Ireland drains underground to where the source of the Shannon rises (at the 'Shannon Pot') in County Cavan.

During 2007 the main focus of the work was on the publication of a report outlining the significant water management issues in the Shannon IRBD, and on the subsequent public consultation. This report (called 'Water Matters – Have Your Say') was launched on 21st June 2007 in an easily readable booklet form by the Shannon IRBD Advisory Council\*. The public consultation period ran until 22nd December, during which a number of public consultation events were held throughout the IRBD. Other work in which the Project was involved related to technical aspects such as further development and refinement of the WFD monitoring programme, particularly groundwater and hydrological aspects, lake typology work and the national Freshwater Morphology Programme of Measures and Standards study. Further information is available from the Project website at [www.shannonrbd.com](http://www.shannonrbd.com) or by contacting the Environment section of Limerick County Council.

\* The Shannon IRBD Advisory Council was established under EC (Water Policy) Regulations, 2003 to allow for structured public participation in the development of the river basin management plan for the Shannon IRBD and is made up of elected members from each of the 18 local authorities in the IRBD, and sectoral interest groups, such as farming, business, recreational and environmental NGOs.

## Litter Management

The Council continued to tackle the problems of littering, fly posting and illegal dumping through its strategy of encouraging behavioural change amongst members of the public who continue to engage in this anti-social activity. A combination of awareness / enforcement measures in tandem with other environmental activities including recycling, composting, etc are consistently being used to stem the trend of illegal waste disposal activity in the County.

The Council's three Environmental Control Officers investigated a total of 1335 litter related complaints, i.e. illegal dumping, abandoned vehicles, unauthorised signage, backyard burning, etc. The Council's clean-up crews arranged for the collection / disposal of waste deposited in public places, the erection of "No-Dumping" signs and the maintenance of the Council's bring banks.

The on the spot fine for litter offences increased to €150 on 30th September, 2007. A total of 380 fines were issued by Council staff in 2007. Legal proceedings were initiated in 5 cases under the Litter Pollution Acts and a further 34 cases under the Waste Management Acts. CCTV technology was used to detect and deter illegal dumping practices at the Council's bring bank facilities.

Once again the Council worked in tandem with An Taisce to promote National Spring Clean and worked closely with community groups, residents associations, etc.

by co-ordinating clean ups, supplying bags, gloves, litter pickers, etc. and arranging for the disposal / recycling of all waste collected. The Council appreciates the work of all volunteers in improving the appearance of their local environment.

The Environment Section organised two anti-litter awareness events aimed at young people in Castlevue and Sharwood Estates, Newcastle West in August 2007. Benny, the Council's anti litter mascot was on hand to meet the children and parents and helped with "fun litter picks", "anti-litter games", "environment tips", etc. Both events were a resounding success and were publicised in the local press afterwards.

## Environmental Awareness Activities

- The Environmental Awareness Officer visited approx 27 schools
- 3 workshops on home composting were held
- An open day was held at the recycling centre
- There was a real nappy day event
- Regional leaflet distributed on facts about recycling and preventing waste
- Supported National spring clean and promoted awareness of local campaign
- Assistance provided for Dell recycling campaign
- Regional business hazardous waste leaflet produced and household leaflet distributed
- Schools participated in energy awareness workshops organised by Sustainable Energy Ireland.
- A Christmas Clean Up Newsletter was produced with ideas on reducing waste at Christmas, details of recycling centres, information about waste legislation and waste enforcement activities and litter awareness.
- There were 13 visits to schools with talks given on the green school themes of waste, litter, energy and water. 2 of these visits were attended by the ECOs.
- 2 school assessments for the green flag
- There was an advert in the local press about the recycling centre at Mungret with a focus on the new reuse schemes available for paint and bulky items.
- The Environmental Achievement Awards were promoted, judged and awarded - 108 winners in 2007.
- A joint (Limerick City & Limerick County) green schools seminar was held on the 29th November 2007 to advise and support teachers in implementing the green school programme in their schools.
- A joint (Limerick City & Limerick County) attendance at LIT Science week to promote general awareness about waste issues amongst national school students.
- An Eco-Unesco Energy Watchers workshop for teachers was held on the 29th November 2007. Also, an Eco-Unesco workshop held for young people at St. Josephs Secondary School in Doon.
- Various awareness activities were carried out within Limerick County Council to encourage staff to reduce the use of paper for the LAPD project i.e. paper wall, paper prevention pledge, team meetings and paper saving tips via email. There was also an article in the staff newsletter "Council Chat" about paper saving tips.



- The Environmental Awareness Officer met with a residents group to discuss composting possibilities for their estate and other waste issues.
- Approx 230 compost cones were sold to members of the public through the area offices and recycling centres.
- Various recycling containers and collections were provided to schools to assist them with their green school activities i.e. book bins, battery bins, composters etc.
- Twelve groups were awarded funds totalling €18,246 from the joint Limerick County Council/DoEHLG Local Agenda 21 Environmental Partnership Fund.
- Scoop the Poop leaflet re-designed and supply of pooper scoopers ordered for distribution through offices and libraries.

## Waste Management

### Regional Waste Management Office

As lead authority for the implementation of the Limerick/Clare/Kerry Regional Waste Management Plan, the Council administers the Regional Waste Office which moved to Lissanalta House, Dooradoyle in 2007. The region published the first annual report on the Replacement Waste Management Plan 2006-2011 in September 2007. The annual report reveals that bring banks and recycling centres are pushing up the regional recycling rate to 23% just above the national average. Prevention awareness is beginning to take effect with a reduction in waste arising per person in 2007. The office has co-ordinated many regional awareness campaigns during 2007 finishing with Waste Watchers guide to slimming your bin in December 2007.

Significant progress on the Local Authority Prevention Demonstration Programme funded by the EPA was made during the last year. A project co-coordinator was appointed and took up post in February. Progress on the four initiatives in this programme could not have been possible without the co-operation of our external project partners, these are: The University of Limerick, John Sisk & Partners, the SkyCourt Shopping Centre and Kerry Airport.

The Deans Council in the University of Limerick have brought about a sweeping change by deciding to request students to submit coursework, final year projects and theses double-sided thus reducing the amount of paper consumed in this process in half. Limerick County Council also made great strides by reducing its paper consumption by 13% during 2007.

The construction of the Marriott Hotel, retail units and apartments at the Savoy Complex Bedford Row Limerick, was completed by John Sisk & Sons towards the end of 2007 and findings in relation to waste prevention at mixed use construction developments is now being compiled.

An improved collection system for dry recyclables and organic waste at the SkyCourt Shopping centre in Shannon was rolled out in August. The system is working very well and an additional 27% of waste has been diverted from landfill.

Kerry Airport's programme of reducing energy and water consumption is now underway, water usage has decreased from 20 cubic metres a week to 7 cubic metres and potential energy

savings of 90 tonnes of greenhouse gases have been identified. A new waste management system to prevent and recycle waste was designed and approved by the airport during 2007.

An extensive awareness raising campaign was held throughout the year to encourage Limerick County Council staff to become more resource efficient. To assist the delivery of the paper prevention initiative a cross-directorate team was established and they meet regularly to exchange ideas on waste prevention. Limerick County Council has achieved a 13% reduction in paper consumption during 2007 in comparison to 2006 figures – the overall target is a 20% reduction by the end of 2008 and considerable effort will be made in future months to ensure this target is reached.

The Local Authority Prevention Demonstration Programme is now entering its final year.

This office also processes Waste Collection Permit applications. To date, the office has received over 500 Waste Collection Permit applications, of which 480 have been granted. The office will process over 450 Annual Environmental Reports for Waste Movements in 2007. The office also co-ordinates concerted waste enforcement in the region in conjunction with the EPA's Enforcement Network and organised regional checkpoints during 2007.

The office has implemented the Green Failte Awards Scheme for the hospitality sector in 2007 in conjunction with hospitality solutions. This scheme ensures this sector implements best practice in energy, water and waste management. At the first awards ceremony in December 2007 which was sponsored by Shannon Development's Regional Tourism Authority 14 Hotels and restaurants received awards. The Regional Waste Management office is continuing to promote, prevention, minimisation and reuse of waste through the green Mentor programme and networking with other organisations

### Waste Enforcement

The Environment Section received 2331 pollution complaints, 2184 of which related to Waste and Litter, 62% of these relating to litter and 38% to waste. Following investigation, most of these complaints were resolved without recourse to the issuing of warning letters, formal notices or legal proceedings. Statutory notices were issued and / or prosecutions were initiated in respect of the remainder.

The following is a breakdown of the of warning letters and notices issued under the Waste Management Acts 1996 - 2005 (WMA's)

- No. of Warning Letters issued = 265
- No. of Section 15 notices issued under the WMAs = 1
- No. of Section 18 Notices issued under the WMAs = 21
- No. of Section 55 Notices issued under the WMA's = 45
- No of notices (article 11(3) and 12(1)) under Waste Permit Regs = 27
- No. of Article 34 notices under the ELV Regs = 24
- No of Article 22 notices under the Packaging Reg's = 3

Out of the 851 waste related complaints received during 2007 a total 576 were resolved by the end of the year. Limerick County Council successfully obtained 11 convictions for offences under the Waste Management Acts for various offences.

#### **Permit Regulation**

The Council received 35 applications during 2007. A total of 17 Waste Permits were granted in respect of new facilities, 19 sites expired or were closed off bringing the total number of current permitted facilities in the county to 34 at the end of 2007. 28 applications were under assessment at the end of the year. The Council visited 48 Waste Permitted Facilities during the year, this number included facility audits, visits to sites where the permit had expired/lapsed and C&D site inspections.

The RWMO issued/reviewed 37 applications during 2007. A total of 16 were revoked or lapsed during the reporting period bringing the total number of waste collection permit holders with their principal office based in County Limerick to 79 at the end of the year. The Council audited 29 Waste Collectors during the year to ensure compliance with their Waste Collection Permit.

#### **End of Life Vehicle Regulations**

The Council issued 22 certificates of registration to producers under the Regulations. 2 permitted car dismantlers were issued with reviewed permits as their sites met the ATFs status as set out in the Minimum Technical Requirements under the ELV Reg's. The Council pursued 8 car dismantlers with the view to upgrading their existing permitted facilities to meet the minimum technical requirements of the ELV Reg's and reach ATF status. Out of the approx. 90 known sites that hold crashed cars/End of Life Vehicles (ELVs), 82% were visited during 2007 and written to advising them of their obligations under the Regulations. 36% have cleaned their sites, with over 100 ELV's being removed from unauthorized sites during 2007; about 16% of those are going to regularize their sites, i.e. make an application for a waste permit to store and or dismantle cars.

#### **Packaging Regulations**

The Council continues to inspect major producers of packaging waste in order to assess compliance with the Packaging Regulations. Four concerns have opted for Self-Registration. The remaining producers are members of REPAK. 51 site inspections were carried out in 2007 on premises to assess their requirements under the packaging regulations.

#### **WEEE Regulations**

86 Producers registered with the Council in 2007. 20 inspections were carried out of premises supplying WEEE during the reporting period to ensure compliance with the Regulations.

#### **Other enforcement action**

2 road checkpoints were carried out in conjunction with the Gardai outside Council business hours, one was a regional enforcement exercise carried out in the City environs targeting waste movements in the Cratloe area and the second was carried out by the Council in the Abbeyfeale area. One aerial survey was conducted in the Rathkeale area of the County to identify unauthorised waste activities. 10 random construction sites were visited to determine their waste management procedures on site and compliance with planning conditions.

#### **Farm Plastics**

The Council tendered for a once off waste farm plastic collection scheme at 4 special collection points (Abbeyfeale, Rathkeale, Kilmallock and Ballyneety). The Department of Environment, Heritage & Local Government provided the funding for the Scheme. The contract was awarded in October to FRS for the site management, collection, temporary storage, baling, loading, transportation and recycling of Farm Film Plastics collected from the 4 Special Collection Points in County Limerick. A total of 1866 tonnes of waste farm plastic was collected from the 4 collection points over the 8 collection days and sent for recycling.

#### **Recycling Facilities**

At present, there are fifty Bring Bank facilities around the county offering collections for glass, steel, aluminium cans and textiles. Of these sites twenty two of them offer a facility for the collection of textiles. There are currently four recycling centres located within the county environs, these being located at Kilmallock, Newcastle West, Gortadroma and Mungret. There is also a facility in Mungret providing for the composting of green waste, which can be used as a soil enhancer. In return users of the recycling centre in Mungret, now have the facility to take away some free compost product if they so desire. Also at Mungret CAC, two reuse areas came into operation during the year, the first of these being a paint reuse scheme whereby any partially full cans of paints are set aside to be used by community groups or members of the public.

The second reuse area which is also in operation provides for the storage of unwanted items/pieces of equipment left by members of the public. These are stored in a marked off area and can be taken away by users of the centre, for their own use. Examples of items which are stored here include bicycles, furniture items, exercising equipment etc. This area operates on the principle that if the relevant items are not taken for reuse by a member of the public, they can still be recycled, if the items cannot be recycled, they will not be accepted at the reuse centre.

#### **Derelict Sites**

The provisions of the Derelict Sites Act 1990 continued to be enforced during 2007 and a number of prosecutions under that Act were taken.

The Derelict Sites Register was maintained and continually updated in 2007, two sites were added to it and three removed from it.

The Derelict Sites Register is a statutory register established under Section 8 of the Derelict Sites Act, 1990. It is available for public inspection in the Environment Directorate, during normal business hours.

## Energy Agency and Conservation

The mission statement for the agency is:

‘The Limerick Clare Energy Agency aims to provide energy solutions for sustainable development in the region. The agency will provide energy services to all economic sectors and the general public, promoting and facilitating efficiency & sustainability in the production and consumption of energy’.

The priorities for the Agency are:

- Energy & Emissions Balance for Limerick & Clare
- Climate Change Strategy for Limerick & Clare
- Energy efficiency benchmarking of local authority facilities
- Energy auditing of community facilities
- Energy efficiency & renewable energy training for community groups
- Implement the Energy Performance Buildings Directive
- Promote an Indigenous energy supply
- Promote increased use and understanding of renewable energy technologies
- Provide energy management services
- Establish a Fuel Poverty Programme for Limerick & Clare
- Promote an energy efficient transport strategy for Limerick & Clare.

## Emergency Services

Limerick County Fire Department aims to maintain and improve the quality of response to fire and emergency incidents, to ensure the fire safety of planned and existing buildings in accordance with the relevant legislation and Codes of Practice and to promote public awareness of Fire Safety. The Department maintained its ISO9001 2000 Quality Award in 2007 following external surveillance audits.

Good progress has been made on projects included in the Five-year Business Plan 2006 – 2010. The Business Plan, in conjunction with the Corporate Plan for Limerick County Council, sets out the Fire Authority’s objectives for five years in order to meet the needs of customers, staff and statutory obligations and represents a structured approach to planning the Authority’s activities.

### Operations

The County’s operational response is provided by 6 Fire Stations located at Abbeyfeale, Cappamore, Foynes, Kilmallock, Newcastle West and Rathkeale. Limerick City Fire Service is retained to provide fire cover in the City Environs. These brigades responded to 781 incidents in County Limerick in 2007.

Approval was granted in 2007 to increase the number of fire fighters in each station from 10 to 11.

The roll-out of the new Incident Command System, introduced as part of the Fire Service Change Programme to improve Health & Safety management of incidents, commenced in 2007.

Funding was secured in 2007 for one new fire appliance and two second hand appliances. These vehicles will raise the age profile of the fleet and allow older vehicles to be retired.

Funding of €206,000 was also secured for replacing the roof and adding an office extension to Newcastle West Fire Station.

Tenders were received in 2007 for the building of a new fire station in Kilmallock.

An application for capital funding was completed and sent to the DoE in 2007 for the refurbishment of Cappamore Fire Station.

Money was set aside in 2007 for the purchase of a new bar coding system for equipment used in the Fire Service; this will provide an improved method of managing the maintenance of all equipment and vehicles.

New computers were provided in each station in County Limerick to aid communication between HQ and fire fighters.



Hazardous Materials Course, Foynes 2007

### Fire Prevention

The Fire Prevention Department processed a total of 237 Fire Safety Certificate applications in 2007. An assessment was made of 461 referrals from the Planning Department in line with the Fire Services and Planning Acts in respect of new developments. 327 inspections were carried out under the Fire Service Existing Building Inspection Programme.

A new software package was purchased in 2007 to help manage all the process involved in Fire Prevention work.

### Community Fire Safety

Fire officers visited a total of 47 schools in 2007 representing 37% of all primary schools in County Limerick to educate children about home fire safety. These visits are part of the National Fire Services Change Programme “Safety Team – Primary Schools Project” aimed at third class children and delivered to all primary schools throughout the County.

Smoke alarms were installed in a total of 108 homes in County Limerick in 2007, with 127 homes being visited to ensure a working smoke alarm was installed.



6 public talks to community groups were delivered in 2007. 12 pre-tenancy talks on fire safety in the home were given to new tenants of Local Authority Housing.

A new Demonstration trailer was delivered in 2007 which allows the fire service to graphically demonstrate to the public fire risks in the home.



BA Refresher Course 2007

### Training and Development

The Fire Service's commitment to training was reflected by fire-fighters and officers attending 52 training courses including a Recruits Course. These courses ranged in duration from 1 day to 2 weeks and were held both at home and abroad.

The development of a Training and Development Plan for fire fighters was completed in 2007. The Plan, along with the roll out of PMDS, will identify the training needs of fire fighters and will provide a 'road map' of training for new recruits joining the service.

### Fire Safety week

Fire Safety in the home was promoted during Fire Safety Week 2007 through radio interviews, home fire safety advertisements, public information stands in Shopping Centres and supermarkets throughout the County and visits to Fire Stations by local schools. The week culminated in an Open Day in Rathkeale Fire Station which was visited by over 300 people. The public had an opportunity to see the fire station and the equipment in use by the Fire Service. The activities included a chip-pan fire demonstration by fire fighters. A public information stand on home fire safety was also provided.

### Major Emergency Management

As part of the governments' Major Emergency Development Programme 2006-2008, the fire service has helped develop risk assessments for all potential major emergencies for the County. It has also identified a location for the local co-ordination group for major emergencies in Lissanalta House, Dooradoyle.

As part of the Local Authorities' requirements under the European Sevseo directive the fire service has ensured

completion of an external emergency plan and a table-top exercise for one of the two Seveso sites located within the County.

## Building Standards

The Building Control system applies to the design and construction of new buildings, extensions and material alterations to and certain changes of use of existing buildings. The purpose of the Building Standards section is to promote quality in building standards through a combination of inspections, advice & enforcement of the appropriate legislation. Powers of enforcement relate to a wide range of matters including structural stability, fire safety, materials, workmanship heating, insulation, ventilation and access for people with disabilities.

### The Building Control Act 1990

#### Building Control Regulations 1997

A Commencement Notice must be submitted to the Building Control Section prior to the commencement of work on any development. The information in the notice forms the basis of site inspections of the work in progress. Where issues arise in relation to construction, efforts are first made to resolve the matter through discussion and co-operation. However, in some instances, enforcement measures are necessary.

#### Building Control Act 2007

This Act amends and extends the Building Control Act 1990 and includes provisions to strengthen the enforcement powers of Local Building Control Authorities.

#### The Act

- introduces revised procedures for the issue of Fire Safety Certificates.
- provides for Disability Access Certificates (DAC)
- widens the right of Building Control Authorities to seek injunctions from the High Court and Circuit Court
- provides options for authorities to bring summary prosecution for all building code offences in the District Court and increases penalties for offences.

The Building Standards section received approximately 1200 Commencement Notices relating to approximately 2200 buildings in 2007. A total of 61 Warning Letters were issued. 4 Enforcement Notices were served and 9 prosecutions were initiated during this period.

## Veterinary Services

### Food Safety

The main body of work undertaken by Veterinary Services in 2007 related to the delivery of food safety regulatory services under contract to the Food Safety Authority of Ireland (FSAI)

11 low-throughput abattoirs in the county were approved for the processing of animals intended for human consumption and production in these establishments was closely monitored, particularly in relation to hygiene and animal welfare. Through-put in these abattoirs in 2007 was: Cattle 2220; Sheep 7353; Pigs 117. Each animal was inspected by a veterinary inspector before and after slaughter and all carcasses passed fit for human consumption were health marked. As part of the monitoring process, carcase swab samples were submitted from time to time for microbiological analysis to verify that appropriate operational hygiene standards were being maintained. All samples analysed during the year proved to be satisfactory. In addition, 14 samples requisitioned by the FSAI under the National Residue Monitoring Plan were forwarded to the Central Meat Control Laboratory; all samples proved negative for prohibited substances.

This department also had responsibility for the supervision of 8 approved meat processing establishments located within the county; these included plants producing cut fresh meats, cured meats and premises producing various meat products, both cooked and uncooked. A comprehensive programme of hygiene inspections and audits, as agreed with the FSAI, was implemented for these establishments during 2007.

Contact was maintained with other food safety agencies in the region, such as the Department of Agriculture and Food and the Health Services Executive through regular meetings of the Regional Zoonoses Group at which ongoing and emerging food safety issues of mutual concern were considered.

A number of meetings were held with the FSAI during the year to review progress with the programme of work and monthly reports were also submitted to the Food Authority.

### Animal Control

This department, under an agreement with Limerick City Council, operates the dog control service for both the city and county. The new Dog Shelter located within the Civic Amenity Centre at Mungret was officially opened at the beginning of the year. This provided much improved kennelling facilities for dogs and enabled the delivery of an enhanced service to the public. The shelter opening hours are 9.30am to 12.30pm Monday to Friday, Telephone No. 061-301604.

The shelter handled 1155 dogs during the year. Of these, 218 were successfully re-homed. All dogs being re-homed were micro-chipped. This facilitates the accurate identification of every dog and who its owner is. Such information can prove very useful in the event of the dog being lost or abandoned in the future.

All dogs by law must be licenced and kept under control. 9500 individual licences and 35 general licences (permitting the keeping of any number of dogs at the one location) were purchased in 2007 by dog owners residing in the county. An individual dog licence costs €12.70 (general licence €254) and may be purchased at County Hall, Dooradoyle, any of the Area Offices, on line at [www.limerickcoco.ie](http://www.limerickcoco.ie) or at any post office.

In relation to stray horses, 92 animals were impounded during the year. The collection and impounding of stray horses has been contracted out to a private company for the past number of years. All reclaimed horses were micro-chipped before release for identification purposes.



Hazardous Materials Course, Foynes 2007

### Civil Defence

Limerick County Civil Defence had a very active year. Training continued throughout the County while Civil Defence personnel participated in Operational activities / Training Exercises and also provided assistance to their local Communities.

#### Training Events Included

- Participation in Regional Rescue (Glengarriff), Auxiliary Fire Service (Mallow) and Welfare (Clane) Competitions
- Participation in National Exercise in Arklow
- Ex Foynes – (Boat Exercise with Limerick City)
- Annual Training Camp Lisdoonvarna / Lahinch Co Clare

#### Training Locations

First Aid, Auxiliary Fire Service, Rescue and Welfare classes were carried out in the following locations:

Anacotty	Life Saving First Aid, Rescue and Aux Fire Service
Kilmallock	Life Saving First Aid
Glin	Life Saving First Aid and Welfare
Rathkeale	Kayaking
Doon	Auxiliary Fire Service
Killaloe	Boating

### Courses

**Local** - Members completed courses in Lifesaving First Aid and Kayak training to level 2 (Irish Canoe Union).

**Civil Defence School** - Members attended courses and received certificates in Technical Rescue, Media, Induction and Casualty (Casualty Instructors Upgrade, Heart Saver Automated External Defibrillator, Basic Life Support Instructors, Basic Life Support Health Care Provider courses).

### Recruitment

Fourteen Recruits successfully completed their Lifesaving First Aid Course throughout the year.

### Community Events / Operations

Civil Defence provided assistance at numerous Local, National and International events including:

- Searches for Missing Persons
- Irish Open Golf Adare
- FACE 2007 (First Aid Convention In Europe)
- Munster Senior Cross Country Championships
- Volunteer Fair Newcastle West
- Clonshire Show jumping event
- Alan Kerins African Project
- Chernobyl Children Project
- Terry Fox Run-Irish Cancer Society
- Diocesan Pilgrimage
- Bilboa A.C.10 k Road Race
- Limerick Cycle Race Fedamore
- Lough Gur Summer Festival
- Go For Life Festival UL
- James King Memorial Bruff
- Cappamore Agricultural Show
- Kildimo Charity Event
- Adare Two Day Cycle Race
- Limerick 100 Classic Cycle Tour
- Brothers of Charity Bawnmore
- Milford Harvest Fair
- Terry Fox Run Ballingarry
- Irish Student Badminton Tournament UL

### Civil Defence HQ Annacotty

Refurbishment works at Annacotty were completed during the year. The Minister for Defence Willie O'Dea, TD and Cllr Kevin Sheahan, Cathaoirleach officially opened the new Limerick County Council Civil Defence Headquarters in Annacotty on 14th September. The state-of-the-art facility includes a training room, offices, stores ablutions and a garage. This facility is a great asset to the organisation and is much appreciated by the volunteers.



### Water Safety

#### Summer Lifeguard Service

Five lifeguards and one pier attendant were employed for the Summer 2007 bathing season at Glin and Kiltetry piers. This allowed for seven-day cover at these venues, in response to public demand. An in-service course was organised for the lifeguards, all of whom qualified to the national Beach Lifeguard Standard.

#### Improved Facilities

New toilet facilities were provided at Kiltetry Pier in 2007, for staff and the visiting public.

#### Lifebelts

Lifebelts are provided and maintained at all known bathing areas, riverbanks and water-related hazards in the County.

#### The Maritime Safety Act, 2005

One incident involving a person who was detected using a small boat in Bleach Lough without wearing a lifejacket was investigated during 2007.

#### Marine VHF Radio Course

A course to qualify and license staff to use Marine VHF radio was organised in 2007 for lifeguards and staff from the Environment & Emergency Services Directorate. Limerick County Council is the only local authority to have all lifeguards licensed and qualified to use marine radio.

#### Rigid Inflatable Boat

The Council's training boat was used to provide safety cover for sailing events in the Shannon Estuary run by Foynes Yacht Club, and for the historic Glin Castle Yacht Race held in Glin in August, 2007 and organised by the Western Yacht Club, Kilrush. Driver training for staff who are qualified to drive a powerboat was provided in co-operation with Foynes Yacht Club, with emphasis on recovering casualties from pleasure craft while under way.





Leisure Boats on the Shannon Estuary

### Irish Water Safety

The Council's Water Safety Development Officer, Mr. John Considine, is a member of the Council of Irish Water Safety, which is the official national body with responsibility for water safety in Ireland, established under S.I. No. 389 of 2006. He is also Vice-Chairman of the National Lifeguard Commission and Hon. Secretary of the Irish Water Safety Development Officers' Association.

## Corporate Projects

*To embed the principle of social inclusion in all policies, practices and service delivery, in recognition of the diversity, equality and right to inclusion of all people*

### National Disability Strategy and Local Government Sectoral Plan

People with disabilities have not gained from the improved employment situation in recent years, with an estimated 80% of people with disabilities in Ireland being unemployed. A key element in the Government's overall strategy for people with disabilities is the mainstreaming of services. It places clear obligations and requirements on service providers to ensure that their systems, services and products are accessible to all. Creating a more inclusive society by alleviating social exclusion, poverty and deprivation is one of the major challenges facing Ireland. Social Inclusion is a core issue identified in the Local Government Act 2001 and Limerick County Council recognises that the meeting of needs of local people is one of its core tasks.

According to the 2002 census of population there were 9,230 people with a disability in County Limerick which represents 8.5% of the total population of the County.

County Limerick is characterised by a large number of small centres of population with 71% of the population living in centres below 1,500. The majority of people with disabilities (approx 77%) do not have mobility impairments, they may however have impaired vision, hearing intellectual impairments or mental health difficulties and cross the whole life cycle spectrum.

To address this issue Limerick County Council submitted a funding proposal to the Department of the Environment, Heritage and Local Government in 2007 to continue on the initiatives that were implemented in 2006. The works provided were divided into Revenue Projects and Capital Works Projects.

### Revenue Projects

The Revenue Projects concentrated on issues such as training and public awareness, in conjunction with improvement in IS accessibility and providing equipment for people with disabilities. The main initiatives we carried out under this scheme are:

- Provision of height adjustable chairs for all Libraries
- Installation of automatic doors to Adare Heritage Centre
- Installation of Playground Equipment in Cappamore
- Provision of Disability enabled PCs in Rathkeale Library

### Accessibility Improvement Works

The Capital Works programme concentrated on physical works to footpaths in towns, villages and parks to improve accessibility. The areas targeted in this regard included:

- Footpath and access improvement works to Adare
- The Demesne Park in Newcastle West
- Dooradoyle Library
- Castlemahon

### Capital Building Programme

2007 saw major progress in relation to the Capital Building Programme. Several projects came to a very successful conclusion while several are continuing to go through statutory processes including detailed design and Part VIII processes.

#### Completed Projects

- Rathkeale Area Office, Library and Arts Centre
- Lissanalta House, Dooradoyle which houses the new Road Design, Library and Motor Tax Offices
- Machinery Yard Kilmallock
- Civil Defence Building, Annacotty

#### Ongoing Projects

- Kilmallock Area Office, Library and Court House completed the Part VIII process in 2007 and it is hoped to commence construction in mid 2008.
- Kilmallock Fire Station completed Part VIII and detailed design in 2007 and works there should be completed in Dec 08
- The new amenity park in Castletroy commenced on site in 2007 and the expected completion date is Summer 2008.

## Service Indicators

E:	Environmental Services	2005	2006	2007
<b>E1:</b>	<b>Water</b>			
	% of River Channel			
	Unpolluted	45.7	*	*
	Slightly polluted	25.6	*	*
	Moderately Polluted	27.1	*	*
	Seriously Polluted	1.6	*	*
<b>E2:</b>	<b>Percentage of Drinking Water analysis results in compliance with statutory requirements with regard to:</b>			
	Public Schemes	99.01	*	*
	Private Schemes	93.9	*	*
<b>E3:</b>	<b>Fire Services</b>			
	Average time in minutes, to mobilise Fire Brigades in			
	Time in minutes to mobilise Firebrigades in Full Time Stations	n/a	n/a	n/a
	Time in minutes to mobilise Firebrigades in Part Time Stations	4.43	4.27	4.46
<b>E4:</b>	<b>Percentage of attendances at scenes where</b>			
	First attendance is at scene within 10 minutes	43.38%	38.73%	29.14%
	First attendance is at scene after 10 minutes but within 20 minutes	43.08%	44.12%	44.79%
	First attendance is at scene after 20 minutes	13.54%	17.15%	26.07%
<b>E5:</b>	<b>Fire Prevention - Total number of fire safety certificate applications</b>			
	Received	200	236	237
	Processed	205	225	241
<b>E6:</b>	<b>Waste Management</b>			
	% of households provided with segregated waste collection	n/a	n/a	99.4
<b>E7:</b>	<b>Household waste collected which is sent for recycling</b>			
	Tonnage	4542	4330	5031
	% of household waste collected	14.9	14.8	18.4
<b>E8:</b>	<b>Household waste collected which is sent to landfill</b>			
	Tonnage	21046	20458	19402
	% of household waste collected	69.30%	70.10%	71.0%
<b>E9:</b>	<b>Recycling Facilities</b>			
	<b>Bring Banks Number of Facilities</b>			
	Glass	47	49	50
	Cans	47	49	49
	Textiles	10	12	18
	Batteries	0	0	11
	Oils	0	0	0
	Others	44	48	10
	<b>Civic Amenity Sites Number of Facilities</b>			
	Glass	4	4	4
	Cans	4	4	4
	Textiles	3	4	4
	Batteries	3	4	4
	Oils	3	4	4
	Others	4	5	4

\* EPA/LGCSB Input

## Service Indicators

	2005	2006	2007
<b>Total Number of Facilities (Bring Banks and Civic Amenity Sites)</b>			
Glass	51	53	54
Cans	51	53	53
Textiles	13	16	22
Batteries	3	4	15
Oils	3	4	4
Others	48	53	14
<b>Bring Banks No of Locations</b>			
	per 5,000 of population	Total Number	Total Number
Glass	2.1	53	54
Cans	2.1	53	53
Textiles	0.53	16	22
Batteries	0.12	4	15
Oils	0.12	4	4
Others	1.98	53	14
<b>Tonnage of Waste collected for recycling</b>			
	per 5,000 of population	Tonnage	Tonnage
Glass	48.25	1333.11	1676
Cans	5.09	147.98	155
Textiles	6.44	274.01	258
Batteries	2.65	61.4	71
Oils	0.32	10.42	20.2
Others	74.30	4028.44	5052
<b>E10: Litter Prevention and Environmental Enforcement</b>			
<b>Litter - Number of Litter Wardens</b>			
Total Number of Full-time Litter Wardens	3	3	3
Total Number of Part-time Litter Wardens	2	2	2
Number of Litter Wardens (both full & part-time) per 5,000 population	0.2	(Total) 5	(Total) 5
Number of Spot Fines issued	112	362	380
Number of Prosecutions due to non-payment of on-the-spot fines	1	7	5
Number of Prosecutions Secured	0	0	1
<b>% of Areas within the local authority that are</b>			
Unpolluted (i.e. Litter free)	7.9	20.9	*
Slightly polluted with litter	33.7	52.2	*
Moderately polluted with litter	47.2	22.4	*
Significantly polluted with litter	10.1	4.5	*
Grossly polluted with litter	1.1	0	*
<b>E11: Environmental Complaints and Enforcement</b>			
Total number of cases subject to complaints concerning environmental pollution (relating to waste, litter, water pollution, noise pollution, air pollution)	2,282	2383	2331
Number of Complaints investigated	2,209	2210	1992
Number of enforcement procedures taken	366	276	215
<b>E12: % of Schools participating in environmental campaigns</b>			
Primary Schools	49	56	74
Secondary Schools	76	85	87

\* TES Supplied



# Finance, Information Systems and Motor Taxation



Oliver Killeen  
Head of Finance and  
Information Systems

## Finance

*To provide relevant, timely and accurate financial information  
to assist in the making of informed decisions*

## Balance Sheet as at 31st December 2007

	€ 2007	€ 2006
<b>Fixed</b>		
Operational	322,315,576	296,655,939
Infrastructural	1,953,225,643	1,963,252,715
Community	552,748	552,748
Non-Operational	11,734,177	12,037,849
	<b>2,287,828,144</b>	<b>2,272,499,251</b>
<b>Work-in-Progress and Preliminary Expenses</b>	<b>333,889,331</b>	<b>249,196,819</b>
<b>Long Term Debtors</b>	<b>25,944,164</b>	<b>27,898,154</b>
<b>Current Assets</b>		
Stock	305,829	255,822
Trade Debtors and Prepayments	26,836,225	14,096,408
Bank Investments	35,167,345	31,644,656
Cash at Bank	4,154,870	-
Cash on Hand	13,780	13,360
	<b>66,478,049</b>	<b>46,010,246</b>
<b>Current Liabilities</b>		
Bank Overdraft	-	54,398
Creditors & Accruals	23,472,398	27,898,324
Urban Account	-	-
Finance Leases	93,881	93,881
	<b>23,566,279</b>	<b>28,046,603</b>
<b>Net Current Assets / (Liabilities)</b>	<b>42,911,770</b>	<b>17,963,643</b>
<b>Creditors (Amounts greater than one year)</b>		
Loans Payable	80,688,947	59,632,884
Finance Leases	65,242	153,742
Refundable Deposits	1,190,074	1,144,656
Other	-	-
	<b>81,944,262</b>	<b>60,931,282</b>
<b>Net Assets / (Liabilities)</b>	<b>2,608,629,146</b>	<b>2,506,626,585</b>
<b>Financed By</b>		
Capitalisation Account	2,287,828,144	2,272,499,251
Income WIP	336,357,679	249,219,688
Specific Revenue Reserve	384,904	384,904
General Revenue Reserve	1,138,929	1,027,254
Other Balances	(17,080,509)	(16,504,512)
<b>Total Reserves</b>	<b>2,608,629,147</b>	<b>2,506,626,585</b>

Prompt Payment of Accounts Interest - Total paid - € 10,900.76



## Income and Expenditure Account Statement for Year Ended 31st December 2007

The Income and Expenditure Account Statement brings together all the revenue related income and expenditure. It shows the surplus/(deficit) for the year.

	€	€	€	€
	Gross Expenditure	Income	Net Expenditure	Net Expenditure
	2007	2007	2007	2006
<b>Expenditure by Programme Group</b>				
Housing & building	8,956,100	8,134,814	821,286	1,093,715
Road transportation & safety	36,251,813	21,669,291	14,582,522	13,415,075
Water supply & sewerage	17,030,517	7,492,077	9,538,440	8,768,596
Development incentives & control	5,598,847	3,121,001	2,477,846	2,533,122
Environmental protection	17,540,274	9,127,377	8,412,898	3,469,855
Recreation & amenity	5,093,877	602,948	4,490,929	4,140,365
Agriculture, education, health & welfare	7,585,562	6,571,734	1,013,828	1,372,530
Miscellaneous	7,268,010	2,654,708	4,613,301	4,367,390
Support services	-	-	-	-
Sundry debtors	-	-	-	-
<b>Total Expenditure/Income</b>	<b>105,324,999</b>	<b>59,373,949</b>		
Net Cost of Programmes to be funded from Rates and Local Government Fund			45,951,050	39,160,648
Local government fund			26,151,406	24,160,987
Commercial rates			26,447,623	23,948,427
<b>Surplus/(Deficit) for Year before</b>			6,647,979	8,948,766
<b>Transfers from/(to) Reserves</b>			(6,536,304)	(8,348,683)
<b>Overall Surplus/(Deficit) for Year</b>			<b>111,675</b>	<b>600,083</b>
<b>General Reserve at 1st January</b>			<b>1,027,254</b>	<b>427,171</b>
<b>General Reserve at 31st December</b>			<b>1,138,929</b>	<b>1,027,254</b>



## Summary of Capital Expenditure and Income

	€ 2007	€ 2006
<b>Expenditure (Net of Internal Transfers) *</b>		
Housing & Building	34,633,518	28,866,048
Road Transportation & Safety	75,039,287	107,726,330
Water Supply & Sewerage	14,530,910	16,000,046
Development Incentives & Control	3,517,907	5,215,169
Environmental Protection	11,519,111	7,135,406
Recreation & Amenity	3,027,401	2,164,126
Agriculture, Education, Health & Welfare	-	-
Miscellaneous	16,478,563	4,969,519
	<b>158,746,698</b>	<b>172,076,644</b>
<b>Income (Net of Internal Transfers) *</b>		
Housing & Building	27,247,665	30,128,887
Road Transportation & Safety	73,252,976	100,348,859
Water Supply & Sewerage	11,286,801	13,785,446
Development Incentives & Control	27,658,781	16,094,202
Environmental Protection	9,228,256	6,954,665
Recreation & Amenity	2,441,405	1,967,188
Agriculture, Education, Health & Welfare	-	-
Miscellaneous	22,567,345	3,103,021
	<b>173,683,230</b>	<b>172,382,267</b>
<b>Surplus/(Deficit) for year</b>	<b>14,936,532</b>	<b>305,624</b>
<b>Balance (Debit)/Credit @ 1st January</b>	<b>17,342,771</b>	<b>17,037,147</b>
<b>Balance (Debit)/Credit @ 31 December</b>	<b>32,279,303</b>	<b>17,342,771</b>

\* Excludes internal transfers, includes transfers to and from Revenue account

## Information Systems

*To maintain and progress a secure and reliable infrastructure of Information and Communications systems which will facilitate the management and operations of Limerick County Council*

The main areas of activity in the I.T. section are as set out: -

### Council WEB Site - <http://www.lcc.ie>

- Over 6 million hits during 2007.
- Maintained Double A Accessibility in line with international Web Content Accessibility Guidelines (WCAG).
- Implement G.I.S. based On-Line Planning Enquiry System.
- 8 Sections now updating their own Web pages using Microsoft Content Management Server.
- Maintained Double A Accessibility in line with international Web Content Accessibility Guidelines (WCAG) on Web Sites hosted by Limerick County Council.
  - Limerick Clare Kerry Regional Waste Management - <http://www.managewaste.ie/>
  - Limerick County Development Board - <http://www.limerickcddb.ie/>
  - County Limerick Childcare Committee - <http://www.clcc.ie/>
  - County Limerick Local Sports Partnership - <http://www.clsp.ie/>
  - Limerick Clare Energy Agency - <http://www.lcea.ie/>
- Developed & Implemented On-Line Environmental WEB Complaints System.

### Systems Development\Implementation

- Implemented eDirect contact management system in Housing Directorate for tracking public representations.
- Implemented Intranet Leave system.
- Implemented Intranet Expenses system.
- Upgraded Intranet to Microsoft Office Sharepoint Server 2007.
- Developed Utility to copy historical Planning files to WEB Site.
- Developed & Implemented SQL Reporting for Planning.

### Wide Area Network

Lissanalta House was connected to the wide area network using a high-speed fibre link during 2007. This high-speed line will facilitate the implementation of Limerick County Council's disaster recovery plan.

Improvements were made to Members links to County Hall during 2007, with 13 Members now using DSL Broadband, 13 using 3G Modems, and 2 using wireless broadband.

The bandwidth of the Council's connection to the Government VPN was increased from 2 to 50mb, during 2007. This connection is used for the following :-

- Sending and receiving email
- Internet Access
- Hosting Web sites in Limerick County Council
- Access to other agencies
- Remote user access

### I.S. Helpdesks

- Three Staff Assigned to I.S. Helpdesk.
- 5,885 calls logged with the helpdesk during 2007.
  - 3,323 Logged by email.
  - 2,562 Logged by telephone.
- Average of 23 Calls per day

### Intranets Project

The introduction of Microsoft Office Sharepoint Server 2007 provides Limerick County Council with a single, integrated platform to manage intranet and extranet applications across the enterprise. It enables the provision of centralised access to business critical information by centrally storing, managing and accessing documents across the organisation. Each section has a homepage which gives users a dedicated site to store, present, view, and manage, content, information, and applications in a controlled fashion.

### Staff Development

Members of staff participated in the following training courses during 2007.

Course.	No. of Participants.
P.M.D.S. Line Manager Training	6
M. Sc. In Software & I.S.	1
MapGuide Workshop	2
AutoCAD Fundamentals 2008	1
MCSE	1
A+	1
Dell Hardware Maintenance	1
Fundamentals of Forensics	1
FME	1

# Motor Taxation

## Office Relocation from Lower Mallow Street to Dooradoyle

On the 27th November 2007, Limerick County Motor Tax office opened its doors to the public at its new location at Lissanalta House, Dooradoyle, Co. Limerick. The building is situated 800 yards from County Hall and is accessible from all major routes into the city. The circular motor tax office was developed as a stand alone pavilion type building. The 35 parking spaces have been installed in grasscrete to soften the impact of the building form and the entire site has been suitably landscaped to integrate the structure with its surroundings.

## Role of the Motor Taxation Section

The Motor Taxation Section of Limerick County Council is responsible for a wide range of activities and services such as: -

- Issuing of Vehicle Licences
- Issuing of Driving Licences
- Recording of Driving Licence Endorsements and Disqualifications
- Processing of Pre-January 1993 changes of vehicle ownership
- Issuing of Certificates of Roadworthiness for Heavy and Light Goods Vehicles.
- Issuing of Trade Plates to Motor Traders

There are now a number of options available to the general public to Tax their vehicles:

- Tax on-line at [www.motortax.ie](http://www.motortax.ie). All you need to do this is a credit card or laser card, your motor insurance details, your PIN as supplied by the VRU in Shannon on your renewal notification. The Motor Tax classifications which are eligible to avail of the online service are: Private Cars, Agricultural Tractors, Excavators, Motor Cycles, Exempt (Disabled Drivers), Vintage/Veteran and Motor Caravans and first time taxing of new or imported vehicles.
- Through the post to Motor Taxation, Lissanalta House, Dooradoyle, Co. Limerick.
- At our Area Office located in Áras William Smith O'Brien, Newcastle West, Co. Limerick
- At our Headquarters located at Lissanalta House, Dooradoyle, Co. Limerick, between the hours of 9.30a.m. to 3.30p.m. daily, including lunchtime.

In addition to the services provided, the Motor Taxation Section facilitates other Government Agencies by providing members of the public with information on the National Car Test (N.C.T.): The Driver Theory Test and the Driving Test.

The office liaises regularly with the Gardaí, the Revenue Commissioners and the Department of the Environment, Heritage and Local Government and Department of Transport regarding Vehicle & Driver Licensing issues.

## Statistical Data

	2006	2007
Total Receipted	€22,046,595	€22,360,102.50
No of overall Transactions	140,107	143,387
No. of Tax Discs Issued	103,954	103,863
Arrears Receipted	7,382	8,666
* No Of Driving Licence Issued	18,666	19,922
** Other Transactions **	10,105	10,936
*** Motor Tax Online	31,716	40,877

## Newcastle West

	2006	2007
No Of Tax Discs Issued (Including Arrears)	44,240	43,268
Arrears Receipted	2,069	2,544

## Lissanalta House

	2006	2007
No Of Tax Discs Issued (Including Arrears)	67,093	69,261
Arrears Receipted	5,313	6,122

## \* Driving Licences

Applicants for Driving Licences must apply to: Motor Tax  
Limerick County Council,  
Lissanalta House,  
Dooradoyle,  
Co. Limerick.

## \*\* Other Transactions

Other miscellaneous transactions include issuing of replacement registration books, vehicle testing, trade plates, miscellaneous receipts etc.

## \*\*\* Online Taxing

Motor Tax online is managed and operated by the Vehicle Registration Unit in Shannon, Co. Clare, who issues a unique pin number with the Motor Tax Renewal Notice, thus, allowing access to the service. Once the online transaction is completed the tax disc will be issued by the VRU directly to the applicant. The website is [www.motortax.ie](http://www.motortax.ie) or [www.motarchain.ie](http://www.motarchain.ie) (as Gaeilge).



## Service Indicators

		2005	2006	2007
<b>M.</b>	<b>Motor Taxation</b>			
<b>M.1</b>	<b>Number of Motor Tax transactions which</b>			
	are dealt with over the counter	93,286	95,417	99,603
	are dealt with by post	39,410	40,368	39,128
	are dealt with in other ways (e.g. online, by telephone)	*	31,716	*
	*Supplied by VRU			
	<b>Percentage of Motor Tax Transactions which</b>			
	are dealt with over the counter	70.43	56.97	71.8
	are dealt with by post	29.57	24.1	28.2
	are dealt with in other ways (e.g. online, by telephone)	*	18.93	*
	*Supplied by VRU			
<b>M.2</b>	<b>Number of postal applications which are dealt with (i.e.disc/driver licence issued) from receipt of the application</b>			
	(a) on the same day	35,586	29,742	33,078
	(b) on the third day or less	2,676	6,870	5,672
	(c) on the fifth day or less	697	2,583	90
	(d) over 5 days	451	1,173	288
	<b>Percentage of overall postal applications which are dealt with (i.e.disc/driver licence issued) from receipt of the application</b>			
	(a) on the same day	90.88	75.00*(a)	84.54
	(b) on the third day or less	6.45	16.00*(b)	14.50
	(c) on the fifth day or less	1.64	6	0.23
	(d) over 5 days	1.04	3	0.73
<b>M.3</b>	<b>Public Opening hours</b>			
	Average number of opening hours per week	30	30	30
<b>REV</b>	<b>Revenue Collection</b>			
<b>REV.1</b>	<b>House Rent</b>			
	(a) Amount collected at year end as a percentage of amount due	96.72	96.00	93.00
	(b) Percentage of arrears			
	(i) 4 - 6 weeks old	13.00	16.79	10.00
	(ii) 6 - 12 weeks old	20.00	14.32	22.00
	(iii) more than 12 weeks old	42.00	45.78	45.00
<b>REV.2</b>	<b>House Loans</b>			
	(a) Amount collected at year end as a percentage of amount due	76.00	78.00	79.00
	(b) Percentage of arrears			
	(i) 1 month old	3.00	3.00	3.00
	(ii) 2 - 3 months old	2.00	1.00	2.00
	(iii) more than 3 months old	93.00	93.00	92.00
<b>REV.3</b>	<b>Commercial Rates</b>			
	Amount collected at year end as a percentage of amount due	98.00	96.00*(c)	97.00
<b>REV.4</b>	<b>Refuse Charges</b>			
	Percentage of households paying refuse charges at year end	0	0*(d)	0
<b>REV.5</b>	<b>Non Domestic Water Charges</b>			
	Amount collected at year end as a percentage of amount due	87.00	90.00	91.00

\*(a) From July to Year end Licences taken in over the counter and subsequently returned by post were recorded as post for the purpose of Service Indicator

\*(b) Decrease in same day return % was impacted on by the introduction of a pilot project of dealing with licences in back office - we have now reverted to issue of licence over counter

\*(c) Procedure for dealing with write offs was amended and strengthened in 2006

\*(d) Private operator - No Council Provision

# { Area Office Development }

Bruff/Castleconnell .....	76
Kilmallock .....	77
Newcastle West .....	78
Ratlkeale .....	80

## BRUFF/CASTLECONNELL

The Bruff/Castleconnell Electoral Area encompasses the urban areas of Caherdavin, Raheen/Dooradoyle and Castletroy/Annacotty plus the rural areas of north-east Limerick. It serves a population of 67,000 people from two offices in Annacotty and Croom. A total staff compliment of 118 managed an overall budget of just over €9.58m.

### Bruff

The Bruff Area Committee has seven members and held twelve area committee meetings during the year

The budget managed by the Bruff Area Office was €2.8m

During the year several meetings took place in relation to the Adare Local Area Plan which is now almost ready to go on public display.

Part 8 Approvals were granted for new disability works and water supply improvements in Bruff. Works are due to commence in early 2008 for both schemes.

A contract commenced on the upgrade of 11 old housing estates in the Caherdavin and Raheen areas that had been taken in charge.

Significant assistance was provided to the Adare Festival that took place during the same week as the Irish Open Golf Championship. This assistance included the provision of new litter bins, a major clean up of the town and its approaches and increased street cleaning operations during and after the festival.

Following the demolition of Treacy's Bar at the corner of Main Street and Hospital Road, Bruff, improvements to the junction were carried out to facilitate vehicles, especially HGV's, in manoeuvring through this junction.



The Visiting Centre at Lough Gur

### Castleconnell

The Castleconnell Area Committee has seven members and held eleven area committee meetings during the year.

The budget managed by the Annacotty Area Office was €6.3m.

Work commenced on the construction of the Neighbourhood Park in Castletroy.

Works carried out during the year included the following –

The pumps supplying water to Knockbrack Reservoir from Clareville were replaced with more efficient higher capacity pumps at a cost of €60,000.

New sewerage treatment plants were provided in Caherconlish, Cappamore and Doon in conjunction with private developers.

The provision of a Children's Playground in Cappamore at a cost of €20,000



View of Worrells End, Castleconnell



# KILMALLOCK

## Kilmallock Area Committee

During the year Kilmallock Area Committee held seven meetings, and also one special meeting to consider Area Plans for the town of Kilfinane.

In July 2007 Cllr. James Houlihan assumed the Chair for a period of 1 year.

At the January meeting, which was held in the Council Chamber, the committee made a presentation to Bruree G.A.A. Club on their victory in the 2006 County Senior Hurling Championship. Important Part 8 developments which were approved during the year include Kilmallock Sewerage Scheme and Kilmallock Area Office, Library and Courthouse.

## Housing

Three new social housing developments, at Station Close, Knocklong, Church Glen, Ballylanders and Deebert Close, Kilmallock were added to the maintenance stock of Kilmallock Area Office.

Work commenced on the construction of 16 no. Social Housing units at Bruff, and construction of 19 houses at Kilfinane was ongoing. Construction was completed on 10 housing units at Hospital.

Under the Voluntary Housing Scheme 11 units were completed by St. Joseph's Foundation at Ballylanders at a cost of €1,480,619.

The scheme for the installation of Central Heating in Co. Council houses continued through 2007.

2 families were accommodated in a new Halting Site at Deebert, Kilmallock in December 2007

## Roads

In the Kilmallock Roads area the following works were carried out:

- Regional Road Reconstruction - 24,750m<sup>2</sup> at a cost of €420,750.
- Regional Road Surface Dressing - 48,702m<sup>2</sup> at a cost of €170,458.
- Regional Road Specific Improvement - €120,000( Footpath and accommodation works as a follow on from the replacement of Knocklong railway bridge in 2006).
- Regional Road Discretionary Improvement - €78,000(footpaths and drainage).

- Local Roads Reconstruction - 99,397m<sup>2</sup> at a cost of €1,537,558.
- Local Roads Surface Dressing - 195,161m<sup>2</sup> at a cost of €585,485.
- Local Roads Discretionary Improvements - €88,248(footpaths and drainage).

In addition a sum of €300,000 was allocated from the development fund for footpaths and car parking opposite Kilbehenny Church, footpaths at Knocklong road, Hospital and sight line improvement works and accommodation works at Uregare Cross, Bruff. Works at Uregare Cross are in progress and the other works are yet to commence. Also approx. 3.00km of the N20 was overlaid with asphalt.

The new Kilmallock Machinery Yard at Gotoon Kilmallock, was completed in 2007.

Urban Renewal works costing €1.5 m. were completed at The Square, Kilfinane.



Development Fund Project Footbridge over the Mahore River at Hospital



New Kilmallock Area Depot opened in 2007



Kilfinane Urban Renewal - Refurbishment of cast iron fountain in the Square. Stone base constructed and dressed by direct labour.

### Water Services

A Small Capital Scheme was completed in Ballyagran. This comprised the development of a new borehole, and pump installation.

### Kilmallock Walled Town

As a member of the Irish Walled Towns Network, Kilmallock, represented by Limerick County Council was granted funding in 2007 from the Heritage Council for specific projects.

These projects are the production of (a) A Conservation and Management Plan for Kilmallock Town Walls, and (b) A Kilmallock Walled Town Public Realm Plan. It is hoped that both plans will be completed early in 2008.

## NEWCASTLE WEST

The Newcastle West Area Office provides a wide range of engineering and administrative services to the Newcastle Electoral Area. These include road maintenance, housing, water services, and maintenance of burial grounds, libraries, courthouses, planning clinics, and motor tax facility. The area is also responsible for the operation and maintenance of the Machinery Yard and the Bitumen Depot at Ballingrane. The facilities are used countywide in the delivery of services.

### Area Committee Meetings

The Newcastle Area Committee has five members and held twelve Area Committee Meetings and one Expanded Area Committee Meeting. Members met three deputations. Michael Collins, M.C.C., is the current chairman.

### Roads

Expenditure on maintenance and improvement works in Newcastle West Roads Area in 2007 was €8.6 million, financed by way of Government Grants, E.U. Co-Financed Grants and the Council's own resources.

Under the E.U. Co-Financed Program, the following projects were advanced:

- Major road re-surfacing works on the R.522 Dromcollogher Road from Castlemahon Cross to Bunoke Bridge.
- Completion of works on the Cork Road Bridge.

Other works included:

- Major road surface overlays on the N.21 from Abbeyfeale to Templeglantine and Cregan's Cross to Newcastle West.
- A large number of road strengthening and surface dressing schemes.
- 17 number Local Improvement Schemes.

### Development Fund Projects

A major development fund project was carried out at Maiden Street Newcastle West. The works included the development of a one-way traffic system, new footpaths and street surface, traffic calming, ducting and decorative lighting.

Other development fund projects included work at Broadford, Tournafulla, Cullinagh, and a village enhancement scheme in Castlemahon.

### Housing

Phase 2 of the regeneration project in Castlevue/Sharwood Estates was completed in 2007 at a cost of €2million. Works included construction of a new entrance to Castlevue Estate from the N21. Phase 3 to commence Mid-2008, subject to funding.

Construction of four new houses was completed as part of the project.

CCTV cameras were installed in both estates and upgrading of footpaths and roads and installation of new ornate lighting.

Regeneration works have commenced in Marian Place, Glin. Works include new roadway, walls, landscaping, overlay and fencing.



New Entrance to Castlevue Estate

### Water Services

A Supervisory Control and Data Analysis Project (SCADA) for Water Services is currently being piloted in the Newcastle West Area. The contract for the installation of the computerised system in the Abbeyfeale water treatment plant and surrounding watermain network at Athea, Templeglantine, Tournafulla and Mountcollins was awarded in 2006, and will be commissioned mid 2008. When completed, the system will feed valuable data to computers/mobiles in picture and text form showing the running of the entire network. The system will facilitate an immediate reaction from repair/maintenance staff, where problems arise.

Construction work was completed on connecting Tobergal spring source to Newcastle West water treatment plant, thereby, augmenting the supply. This will reduce dependency on the Deel.

### Planning

A small number of Planning Clinics were held (by appointment) in the Area Office during the year. However, the Plan Map System is widely used. A number of meetings to consider the review of the Newcastle West and Abbeyfeale Local Area Plans were held during 2007. The Draft Plans are currently on Public Display.

### Motor Tax

The Motor Tax service in Newcastle West has proven very popular with customers from the area and beyond. In 2007, a total of €6.999 million was collected and 43,268 transactions were carried out. This represents in excess 30% of the overall transactions of the County Motor Tax.

### Machinery Yard

Upgrading of the Plant continued in 2007 with the addition of: -  
- Three new trucks to the Surface Dressing Fleet,  
- Two service vans for the Fitter/ Mechanics.

The 2007 procurements compliment the existing fleet and ensure that Limerick County Council maintains a modern and efficient fleet to carry out its works programme.

A contract was awarded for the purchase of 32 Tipper Lorries. Delivery is scheduled for early 2008.



The Five New Plant Items procured by the Machinery Yard in 2007.

### Bitumen Depot

In addition to the above the Machinery Yard Section operates a Bitumen Depot at Ballingrane, which had an output of approximately 1,250,000 gallons of various bitumen products in 2007. This service is used county wide to implement the Surface Dressing and general roads maintenance program.



## Castle Demesne

Progress in the upgrading of the Castle Demesne Amenity Park in Newcastle West continued during 2007. A new car park was developed adjacent to Newcastle West A.F.C., finally bringing to an end, public trafficking within the Demesne. Access from the Town Entrance was also greatly improved with new footpaths, macadam surface, and public lighting. Traffic calming ramps were also included at this location.

Improvements were also effected at the Cullinagh Entrance, with new macadam surfacing to the approach public road (Killoughteen Road), and public lighting linking to the Town public lights on the Killarney Road.

Following on from the improvements to this public amenity over the past number of years, the popularity and usage of the Demesne for recreational purposes by the public has increased dramatically and, indeed, reflects well on Limerick County Council.

Funding for the 2007, works was provided from:

- (i) Department of the Environment Grants under the National Disability Act.
- (ii) Development Funding (Roads and Parks).

## RATHKEALE

### Rathkeale Electoral Area

The Rathkeale Office provides a range of engineering and administrative services to the Rathkeale area, that include Road Maintenance and re-construction, Housing, Sanitary, Water, and customer services.

### Area Committee Meetings

The Rathkeale Area Committee met fourteen times during 2007, with Meetings held in Rathkeale, and County Hall Dooradoyle.

### Roads

Substantial improvement works were undertaken during the year to the Area roads network, with expenditure in excess of €4.8m. These works included road strengthening, surface dressing, macadam overlays, roadway lining, new and replacement signage, roadway drainage, and general roads maintenance.

## New Rathkeale Area Headquarters

The construction of the New Rathkeale Electoral Area Headquarters, "Áras Seán Finn", re-furbishment of the Carnegie Library Building and Arts Centre, was completed in October, 2007, at a cost of €2.7m, with the Area Office transferring operations from the porta-cabin accommodation immediately. The completed fit-out and stocking of the Library Area, and Arts Centre is scheduled for early January, 2008, with the Official Opening in late January.



Macadam overlay works between Rathkeale/Askeaton to Cragmore (R518), Kilmihiill to Lee's Cross (R518), Bruff Line, Liston's Cross to Ballykevin (R520), Pallaskenry junction at Grand gates, Rathkeale Burial Ground Parking Area, Public Car Park and The Square, Rathkeale, Mussell Lane and roadways servicing the Askeaton Swimming Pool Complex.

Further improvement works were undertaken during the year at Kilteery Pier, with grant assistance received from the Department of Communications, Marine and Natural Resources. These improvement works included installation of kerbed "green areas" adjacent to the swimming points, and the laying of an asphalt "blacktop" surface, ramping to the remaining section of the pier, with seating to be fitted in early 2008.

The following works were commenced during 2007 under the Rathkeale Electoral Area Development Fund Allocation :-

- Upgrading and provision of new Public Lighting at :
  - St. Joseph's Burial Ground, Rathkeale,
  - Public Car Park, Rathkeale,
  - Roadway servicing G.A.A. Pitch at Adamswood, Croagh,
  - Enniscoush, Rathkeale,
  - Mussell Lane and roadways servicing Swimming Pool Complex, Askeaton.
- Footpath replacement and improvements at: Askeaton, Ballingarry, Ballyhahill, Glin, Rathkeale.

## Housing

The following is a breakdown of Houses completed/purchased/commenced during the year in the Rathkeale Area:

New Houses completed	Ballingarry	4
Houses Purchased	Foynes	1
New Houses Commenced/ under Construction	Pallaskenry	10

A sum of €230,000 was allocated in 2007 for the maintenance of, and improvements to the Rathkeale Area's existing housing stock, and Residential Caravan site. Central Heating was provided to the remaining local authority dwellings in the Rathkeale Housing Area during 2007, under the Council's Central Heating Programme.

## Water Services

A number of Small Capital Schemes were undertaken during the year and included the following :

- Upgrading works to borehole and filtration at Banogue.

- Re-furbishment of the Croom Water Works Treatment Plant.
- Development of Water Supply Scheme sources at Ballingarry.
- Development of borehole at Duckstown for the Rathkeale Water Supply Scheme.
- Improvement works to the Fanningstown Scheme.
- Upgrade of Sludge Handling facilities at the Askeaton Waste Treatment Plant.

## Sewerage Scheme

Ongoing maintenance and operation of the Sewerage Treatment Plants servicing the Area.

## Burial Ground Improvement Works

Improvement works were carried out at St. Joseph's Burial Ground, Rathkeale, that included replacement of the Cross in the central walkway, removal and re-planting of trees to the northern side of the entrance, a macadam overlay to the car parking area, provision and erection of new entrance barriers, new public lighting on the roadway, hedgecutting, general maintenance including grasscutting and edging of the walkways

Operation and maintenance of water schemes in the Rathkeale area, including the County's largest Water Supply Scheme at Aughinish, that operates to ISO standard.

## Environmental Services

Recycling facilities are located in the following towns and villages:

- Askeaton – Arena Car Park
- Ballingarry
- Foynes
- Loghill
- Pallaskenry – Copsewood College
- Rathkeale – New Line
- Shanagolden

All these facilities provide for the re-cycling of glass, bottles and jars, food and drink cans. Additionally, some of these centres provide facilities for plastic bottles, newspapers and magazines.

## Lifeguard Service

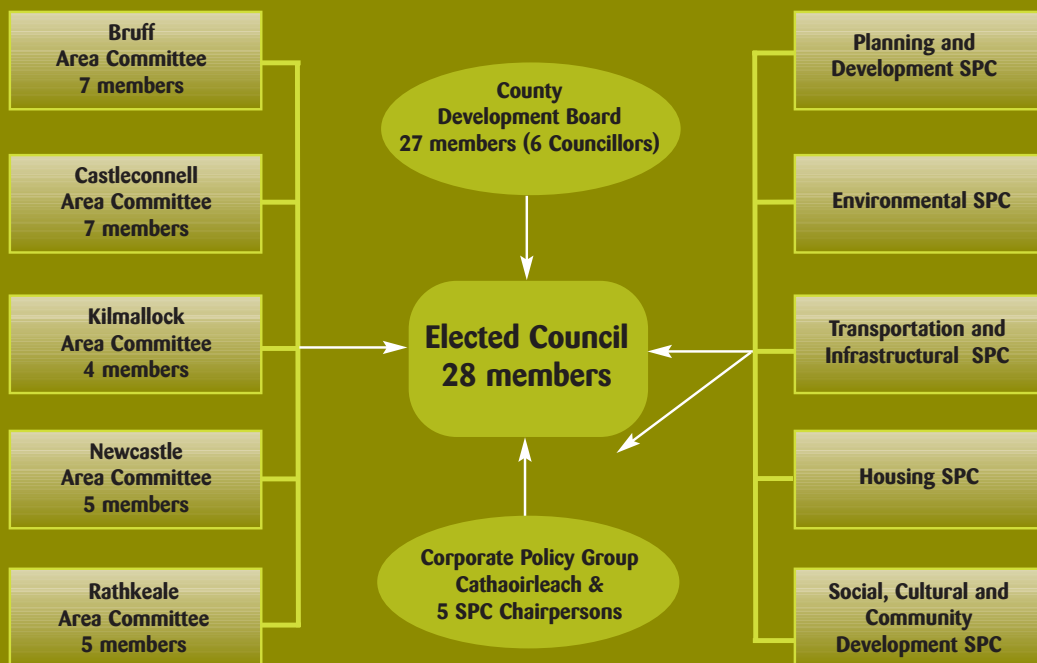
Temporary Lifeguards and pier attendant were employed at both Glin and Kilteery Piers during the summer bathing period.

## Planning

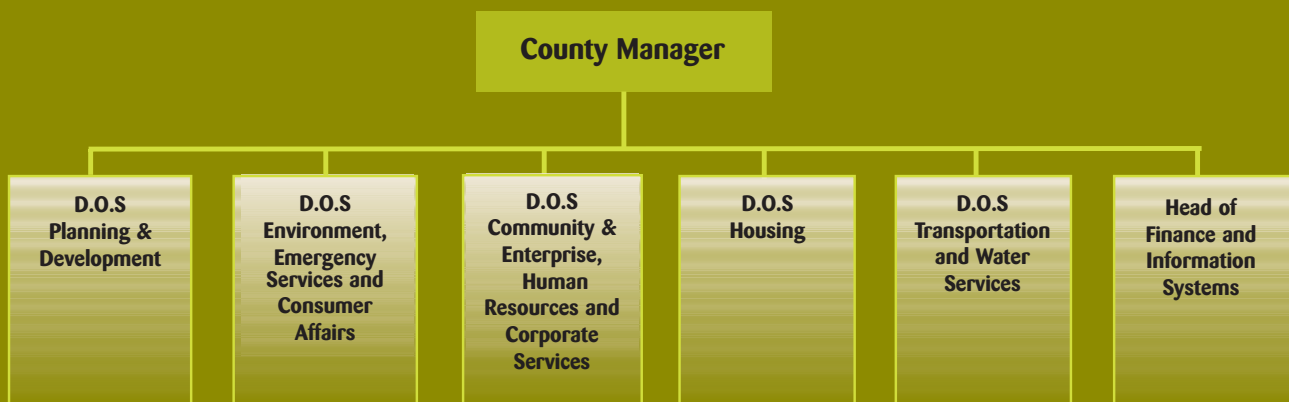
Planning Clinic services, by appointment, operate from the Rathkeale Office on the first Tuesday of each month, between 10.00.a.m. and 12.00. noon. This service continues to be a valuable and much availed of local service for members of the public.

# Limerick County Council Structure and Organisational Chart

## ELECTED STRUCTURE



## EXECUTIVE STRUCTURE



D.O.S (Director of Services)



# Conferences/Seminars Attended by Members in 2007

DATE	TITLE	VENUE
18th January	UCC 25th Silver Jubilee Business Conference	Clarion Hotel, Cork
26th to 28th January	Merriman Winter School 2007	Westport, Co. Mayo,
1st to 3rd February	Training Seminar -The Local Government Planning Service	Dungarvan, Waterford
2nd - 3rd February	Antrim Tourism Conference 2007	Dunadry Hotel, Muckamore, Dunadry
9th - 10th February	AMAI Spring Seminar, 2007.	Tralee, Co Kerry
16th February	Mid West Regional Authority 13th Annual Conference	Adare, Co Limerick
16th -17th February	Planning Seminar for Councillors	Earl of Desmond Hotel, Tralee, Co Kerry
21st – 22nd February	Wicklow County Tourism Annual & International Tourism Conference	Newtownmountkennedy, Co. Wicklow
23rd February	CEC - The Role of Local Authority in Building Peace & Reconciliation	Dundalk, Co Louth
23rd –25th February	18th Colmcille Winter School Conference.	The Colmcille Heritage Centre, Letterkenny
28th Feb to 2nd March	History Conference on the Flight of the Earls	East Tyrone College, Dungannon
2nd-3rd March	Rural & Regional Development Conference	Killybegs, Co Donegal
2nd – 4th March	Energy & the Development Plan, Sustainable, Renewable, Efficient	Clonmel, Co Tipperary
8th – 10th March	Association of County & City Councils Annual Conference	Dungarvan, Co Waterford
9th – 10th March	Celebrating 70 years foe Muintir Na Tire	Ballykisteen, Co Tipperary
23rd March	Threshold Conference – The Future of the Private Rented Sector in Ireland	Dublin Castle, Dublin
25th – 27th March	Transforming the Irish Housing Environment: Policy & Implementation	Santry, Dublin
29th March	On Message – Communicating the Political Campaign	University College Cork
28th March – 1st April	Rattoo Society – 15th Annual Kerry Environmental Conference	Ballybunion, Co Kerry
29th – 30th March	5th Annual Tourism Conference- Tourism: Fostering Local & Regional Regeneration	Carlow
29th – 30th March	Sherkin Island 23rd Annual Environmental Conference	Carrigaline, Co Cork
30th – 31st March	Effective Communication for Councillors	Sligo
3rd April	Anti-Social Behaviour – Tackling it Together	Mermaid, Co Wicklow
12th – 13th April	LAMA – Meeting the Challenge-Providing The Solution	Killarney, Co Kerry
13th – 15th April	National Association of Cllrs – Public Services - Improvement and Accoutability	Scarborough, UK
18th – 20th April	Irish Rural Dweller Association -Last Call for Rural Planning	Killarney, Co Kerry
20th – 23rd April	Coláiste Uladh Centenary.	The Irish College, Gortahork, Donegal
20th April	Southern & Eastern Regional Assembly 8th Annual Conference	Naas, Co Kildare
24th – 26th April	LAI/CILIP – Inspiring Progress – Good Practice & New Initiatives	Portlaoise, Co Laoise
27th April	CEC Seminar - Building the Platform for Peace & Prosperity	Letterkenny, Co Donegal
27th – 29th April	The Local Government Housing Service	Letterkenny, Co Donegal
27th – 29th April	Tipperary International Festival of Peace	Ballysteen, Co Tipperary
10th – 11th May	Irish Link – Access to Rural Service – Who Decides?	Cavan, Co Cavan
5th June	Cork Environmental Forum National Seminar	Lukes, Cork
8th – 10th June	Effective Communication for Councillors	Castlebellingham, Co Louth
8th – 10th June	Eco-Tourism: Getting the Balance	Portafeery, Co Down
13th June	Renewable Energy – A Role for the Regions	Carlingford, Co Louth
21st June	Your Place or Mine...Place...the Key to Investment	Croke Park Conference Centre, Dublin
29th June – 1st July	13th Byrne/Perry Summer School	Gorey, Co Wexford
29th June – 1st July	Breaking Down the Barriers to Local Government Equality & Opportunity	Scarborough, UK
1st – 7th July	Synge Summer School	Rathdrum, Co Wicklow
5th – 7th July	Local Government Planning Service	Baltimore, Co Cork
15th – 20th July	MacGill Summer School & Arts Week	Glenties, Co Donegal
23rd – 27th July	The John Hewitt International Summer School	Armagh, N.I.
6th – 10th August	William Carleton Summer School	Clogher, Co Tyrone
12th – 17th August	The Parnell Society - Continuity & Change in Irish Culture, Society & Politics	Rathdrum, Co Wicklow

DATE	TITLE	VENUE
19th – 25th August	Merriman Summer School – Change Utterly? Ireland 1967-2007	Lisdoonvarna, Co Clare
23rd – 26th August	General Humbert Summer School – Post election Ireland: A New Constitution for a New Ireland	Ballina, Killala, Lacken & Kilcummin, Co Mayo
24th – 26th August	Training Seminar – Local Government & the Arts	Birr, Co Offaly
28th August – 1st September	IAS – Preventing Suicide Across the Lifespan: Dreams & Realities	Killarney, Co Kerry
6th - 7th September	IFPRA 21st World Congress – Parks: A Celebration of Diversity	RDS, Dublin
6th - 7th September	Kilkee Waterworld – Rural tourism 2007-2013	Kilkee, Co Clare
6th - 7th September	Kerry Literary & Cultural Centre – Developing Local Heritage for Tourism Purposes	Listowel, Co Kerry
6th - 7th September	3rd National Renewable Energy Heating – Knowledge for a Renewable Future	L.I.T., Limerick
7th - 8th September	The Fr.William Casey Centenary 1907-2007	Templeglantine, Co Limerick
7th – 9th September	Thatching Symposium: A Galway Perspective	Aran Island, Co Galway
13th – 15th September	AMAI 94th Annual Conference	New Ross, Co Wexford
13th – 14th September	CitizenFirst Project – Putting the Citizen First: How Technology can help	Leper, Belgium
14th September	ASA National Conference – New World New Order New Agri-Food Sector	Trim, Co Meath
14th – 16th September	6th Benedict Kiely Literary Weekend - The Waves Behind Us	Omagh, Co Tyrone
16th – 18th September	ASPO 6th Annual International Conference - Time to React?	City Hall, Cork
17th September	IPA - Successful Apartment Living: Combating Urban Sprawl	Dublin
25th – 26th September	Training Seminar - Rural Development & the Development Plan	Tullamore, Co Offaly
28th – 30th September	2007 La Touche Legacy – The Changing Ireland: Are Local Authorities Prepared?	Greystones, Co Wicklow
28th - 30th September	Tipperary Remembrance Trust – Remembrance Weekend	Excel Heritage Centre, Tipperary Town
2nd – 3rd October	Dun Laoghaire/ Rathdown- Active Citizenship Conference	Dun Laoghaire, Co Dublin
4th – 5th October	Getting a Grip 2007 – Winning or Losing? The battle against Substance & Alcohol Misuse	Killarney, Co Kerry
5th – 6th October	17th KIMO International Conference & AGM	Gorey, Co Wexford
5th – 8th October	A Journey of Remembering – Pathfinding Conference in Flanders and the Somme	Leper, Belgium
11th – 12th October	Planning & Design for Heritage & Development: Projects, Policies & Practice Beyond Either/Or	Dun Laoghaire, Co Dublin
11th – 12th October	Developing Competitive Knowledge-based Regional Economies	Kilkenny
12th – 13th October	TJK Conference: Planning Seminar for Councillors	Tralee, Co Kerry
12th – 14th October	Great Blasket Commemoration – The Vikings/the Scandinavian influence on Ireland	Dun Choin, Co Chiarrai
16th October	UCC Research – Issues in Financial Exclusion & Over-indebtedness in Ireland	University College Cork, Cork
17th October	Chambers Ireland – Local Economic Development	Athlone, Co Westmeath
19th October	Association of Irish Regions 10th Annual Conference	Killarney, Co Kerry
20th October	The Dyslexia Association of Ireland – Dyslexia: Challenge & Achievement	Dublin City University, Dublin 9
26th –27th October	Training Seminar – Health & Safety in Local Government	Carrick-on-Suir, Tipperary
26th – 28th October	Dr. Douglas Hyde Annual Conference	Ballaghaderreen, Roscommon
6th – 7th November	Tracking the Tiger – A Decade of Change	Ennis, Co Clare
7th –8th November	Comhar SDC – Making it Happen: Towards a Sustainable Ireland	St. Helen's Hotel, Dublin
8th November	Local Government Anti-Poverty Learning Network – An Inclusive Approach to the integration of New Communities	Tullamore, Offaly
8th – 10th November	AOIFE 14th Annual Conference – 007 Licence to Thrill	Ballinasloe, Co Galway
9th & 10th November	LAMA Annual Winter Conference	Carlow
13th November	National Conference on Local Food – Exploring the Opportunities	Mullingar, Co Westmeath
14th November	Shannon Development – The Live/Work Economic Development Solution in Action	Tarbert, Co Kerry
16th – 18th November	National Association of Councillors – Power to the people: Working with Local Communities	Belfast, N.I.
16th – 18th November	Training Seminar– Effective Communications for Councillors	Letterkenny, Co Donegal
22nd – 24th November	Clare Tourism – Tourism for Changing Lifestyles	Ennistymon, Co Clare
24th – 25th November	Drogheda Cross Border Focus – Moving Forward	Drogheda, Co Louth
1st December	Training Seminar – The Local Government Budget 2007	Bunclody, Co Wexford
1st December	Pathfinding Conference – A Journey of Remembering	Regency Hotel, Dublin
6th – 7th December	Nuclear Free Local Authority AGM & Irish & UK Local Authorities Standing Conference on Nuclear Hazard	Central Hotel, Dublin
7th December	CEC Winter Seminar – Tackling Poverty & Social Need in Ireland, North & South	Enniskillen, Co Fermanagh

## Appendix 2

### Contact Details for Limerick County Council

Address  
Tel  
Fax  
Website  
E-mail

County Hall, Dooradoyle, Co. Limerick  
061 – 496000  
061 – 496001  
www.lcc.ie  
secretar@limerickcoco.ie

Section	Telephone	Fax	Opening Hours
Accounts Payable	061 496266	061 496013	9.30 a.m. – 4.30 p.m.
Arts Office	061 496498	061 496009	
Building Standards	061 496378	061 496014	
Civil Defence	061 358800	061 358048	
Community & Enterprise	061 496454	061 496011	
Environment	061 496264	061 496008	
Fire HQ	061 496270	061 496007	
General Administration/Higher Ed. Grants	061 496291	061 496001	
Housing	061 496293	061 496012	
Housing Loans	061 496466	061 496001	
Human Resources	061 496331	061 496004	
Rates/Water Charges	061 496360	061 496001	
Roads	061 496233	061 496005	
Waste Collection Permits	061 496596	061 583955	
Water Services	061 496326	061 496010	
<b>Planning</b>	061 496347	061 496006	9.30 a.m. – 3.30 p.m.
<b>Cash Office</b>			9.30 a.m. – 4.00 p.m.
<b>Motor Taxation</b>			
Lissanalta House, Dooradoyle	061 496500	061 583933	9.30 a.m. – 3.30 p.m.
<b>Mid West National Road Design Office</b>			
Lissanalta House, Dooradoyle	061 496800	061 583150	9.30 a.m. – 4.30 p.m.
<b>Library HQ</b>			
Lissanalta House, Dooradoyle.	061 496526	061 583135	9.30a.m. – 4.30 p.m.

#### Area Offices

<b>Newcastle West</b>	069 – 62100	069 62861	9.30 a.m. – 4.30 p.m.
Motor Taxation, Newcastle West	069 – 62100	069 62861	9.30 a.m. – 3.30 pm
<b>Rathkeale</b>	069 – 64129	069 63188	9.30 a.m. – 4.30 p.m.
<b>Kilmallock</b>	063 – 98019	063 98599	9.30 a.m. – 4.30 p.m.
<b>Croom</b>	061 – 397212	061 397438	9.30 a.m. – 4.30 p.m.
<b>Annacotty</b>	061 – 331544	061 336738	9.30 a.m. – 4.30 p.m.
<b>Gortadroma Landfill Site</b>	069 82339		
<b>Mungret Civic Amenity Centre</b>	061 305720		
<b>Newcastle West Recycling Centre</b>	069 78610		
<b>Kilmallock Recycling Centre</b>	063 98836		
<b>Dog Warden Service</b>	061 301604		



### Appendix 3

## Principal Officers of Limerick County Council – 2007

County Manager	Ned Gleeson
Director of Environment, Emergency Services & Consumer Affairs	Gerry Behan
Director of Transportation & Water Services	Paul Crowe
Director of Community & Enterprise, Human Resources and Corporate Services	Josephine Cotter Coughlan
Director of Planning & Development	Tom Enright
Director of Housing	Jimmy Feane
Head of Finance and Information Systems	Oliver Killeen
County Secretary/SEO Corporate Services	Eugene Griffin
County Librarian	Damien Brady
Senior Engineer, Environment, Emergency Services & Consumer Affairs	Tom Tarpey
Senior Engineer, Transportation & Infrastructure	Pat O'Neill
Senior Engineer, Regional Road Design Office	Tim Fitzgerald
Senior Engineer, Water Services	Donal Brennan
Senior Engineer, Housing	Gerard Naughton
Senior Executive Officer, Housing	Mary Fogarty
Senior Executive Officer, Planning & Development	Christy O'Connor
Senior Executive Officer, Business Re-Engineering	Noreen Fahey
Senior Executive Officer, Human Resources	Pat Fitzgerald
Senior Executive Officer, Corporate Projects	Brian Kennedy
Head of Information Systems	Jim Dore
Senior Planner	Gerry Sheeran
Chief Fire Officer	Carmel Kirby
Veterinary Inspector	John McCarthy
Arts Officer	Joan MacKernan
Environmental Awareness Officer	Lorraine Power
Chief Technician	Michael O'Leary
Freedom of Information Officer / Customer Services Liaison Officer	Tina Knox
Partnership Facilitator / Staff Support Officer / Equality Officer	Louise Magner
Civil Defence Officer	Jos Kirby





## **Limerick County Council**

Comhairle Chontae Luimnigh

County Hall, Dooradoyle, Co. Limerick.

**Tel** 061 49 60 00  
**Fax** 061 49 60 01  
**Email** [secretar@limerickcoco.ie](mailto:secretar@limerickcoco.ie)  
**Web** [www.lcc.ie](http://www.lcc.ie)