

CHIEF EXECUTIVE'S REPORT



45
**Community
Groups**
honoured for
**Limerick in
Bloom**

**BEST
Public Park
Nomination
CASTLETROY**



€6
million
Funding Announced for
New Footbridge

Vision

- That the people of Limerick are supported by a professional, proactive and accessible local government structure at the heart of a wider public service.
- That Limerick is acknowledged for its inclusive participation of all its citizens in the development of their community.
- That Limerick is the desired location for business development, cultural enrichment and educational opportunity.
- That Limerick and the Mid-West will compete with other European destinations in terms of business, tourism, living and investment.

Strategy

1. Empowering the citizen to participate in the development of their community, both rural and urban.
2. An environment for real economic development and job creation.
3. A new model of local governance and service delivery.

CHIEF EXECUTIVE'S REPORT

Empowering the Citizen

1. Home and Social Development
2. Libraries/Archives Update
3. Environmental Improvements
4. Festivals Tender
5. LCDC Update
6. Establishment of Public Participation Networks (PPNs)
7. Limerick City of Culture
8. Arts Office Update
9. Sports
10. Fire Service

Economic Development and Planning

1. Economic Development
2. Limerick Marketing
3. Forward Planning
4. Development Management
5. Roads Update
6. ICT Update

Organisational Development

1. Customer Services
2. Innovation Award

Financial Matters

1. Revised Provisional LPT allocation
2. Budget 2015
3. Draft Income and Expenditure Account
4. Collection Figures

CHIEF EXECUTIVE'S REPORT

Empowering the Citizen

1. Home and Social Development

Approved Applicants for Social Housing Support and Areas	Approved Applicants to the 31st of October 2014
Metropolitan District of Limerick	3,410
Municipal District of Adare	
- Rathkeale	283
Municipal District of Cappamore	
- Kilmallock	308
Municipal District of Newcastle West	
West	314
Total	4,315

Home Improvement Schemes

Private Housing Grant Aid	Number of Grants paid at the 31st of October 2014	Euro Amount
MAGS (Mobility Adaptation Grant Scheme)	129	573,049
HAGS (Housing Adaptation Grant Scheme)	62	441,170
HOPS (Housing Aid for Older Persons Grant Scheme)	203	878,654

Stock Management and Construction

Voids Housing Stock 2014 Euro Allocation	Total Units	Completed at the 31st of October 2014
1,071,650	96	70

Name of Programme	Number of Units for 2014	Number of Units Completed at the 31st of October 2014
Energy Efficiency Programme	469	189
SEAI Programme (Sustainable Energy Authority of Ireland)	904	904

Rent Collection - Limerick City & County Council

(The aged debt report is not yet available but it is anticipated that it will be available for November 2014 Report)

Opening Balance @01/01/2014	Accrued Income	Total for collection	Receipts	Closing balance @31/08/2014	% Collection
1,477,480	9,827,670	11,305,150	9,340,995	1,964,155	82.62

CHIEF EXECUTIVE'S REPORT

2. Libraries Update

- The Granary Library hosted a free poetry reading with Richard Blanco, inaugural poet for President Barack Obama. Mr Blanco was chosen to serve as the fifth inaugural poet of the US.
- The Library Service hosted a series of Literacy and Numeracy Summer camps in conjunction with the Library Development Unit of the Local Government Management Agency (LGMA). This project was piloted in Limerick in 2013 and due to its success has been rolled out as a national initiative.
- The RTE String Quartet Contempo commenced the first of a series of lunchtime concerts in the Granary Library. The programme consists of a concert per month from September 2014- June 2015.

Archives

- The Archives service organised a major exhibition on 1970s Limerick which was launched in September with a new website featuring 25,000 images of Limerick from limerickwithlove.limerick.ie

3. Environmental Improvements

Limerick in Bloom Competition and Awards 2014

- 45 community groups from throughout County Limerick were honoured for their participation in the annual Limerick in Bloom competition at an awards ceremony held on Thursday, 23rd October 2014 at the Woodlands House Hotel, Adare. The Council, in conjunction with sponsor JP McManus Foundation, once again hosted this year's competition. Athea Tidy Towns was the Overall Winner of Limerick in Bloom
- **Population 0-300**
(1st) Ardpatrick Tidy Towns, Joint (2nd) Anglesboro Tidy Towns and Kilmeedy Community Development (3rd) Killeely Tidy Towns Association.
- **Population 301-700**
(1st) Athea Tidy Towns (2nd) Kilfinane Tidy Towns (3rd) Galbally Tidy Towns.
- **Population 700+**
(1st) Hospital Tidy Towns (2nd) Kilmallock Tidy Towns, (3rd) Castleconnell Tidy Towns.
- **Housing Estate**
(1st) Slugaíre Residents Association (Dooradoyle) (2nd) Joint) Cappamore Estates Committee and the Village Residents Association (Adare) (3rd) Forest View residents Kilfinane.

- **Community Supported Residential**
(1st) St Ita's Voluntary Housing Association, Abbeyfeale (2nd) Glin Homes for the Elderly (3rd) Killeely / Dromkeen Housing Association.

In addition prizes were awarded to the best performing towns and villages under a number of categories from the National 2014 Tidy Towns Competition.

- Overall Marks - Adare Tidy Towns.
- Tidiness & Litter Control - Feenagh / Corrandeel Voluntary Housing Association.
- Sustainable waste and Resource Management - Kilmallock Tidy Towns.
- Landscaping - Ardpatrick Tidy Towns.
- Wildlife and Natural Amenities - Broadford Development Association.
- Community Involvement and Planning - Galbally Tidy Towns
- Limerick Senior Hurling Manager TJ Ryan attended the award ceremony as guest speaker and to lend his support for Team Limerick Clean-up (TLC), which is scheduled to take place on Good Friday April 3rd, 2015. TLC is a major initiative in the anti - litter campaign, and is supported by the Council and the McManus Benevolent Fund with the main aim of getting as many people as possible across the City and County involved in clean up's on the morning of Good Friday 3rd April 2015. More details are available from www.teamlimerickcleanup.ie

Dog Littering Awareness Campaign

- The Environment Dept in conjunction with and An Garda Síochána have launched a joint campaign aimed at encouraging dog owners to clean up after their animals who foul in public areas. The campaign commenced in the city centre in mid October and is being extended to a number of towns around the county during the month of November.

Cemeteries

- Mount St Lawrence Extension - The Council has invited tenders for the development of 1 acre site extension to Mt St. Lawrence Cemetery. Seven tenders have been received and are being assessed. It is expected that a contractor will be appointed shortly and development works will commence in the coming months.

Parks and Playgrounds

- A successful Halloween Spooktacular event was held over 10 days in Arthur's Quay Park.
- Castletroy Neighbourhood Park has been nominated for best Public Park in the LAMA Community Council

CHIEF EXECUTIVE'S REPORT

Awards 2015.

- Croom Park and Playground - The final touches were put to a new 15 acre park and a children's playground at Croom. The park and playground was developed by Croom Development Association at a cost of circa €1.5m and will be open for use from the start of November.
- Mungret Neighbourhood Park - Detailed design for the new park at Mungret is currently underway. It is hoped to go to tender for the works here in early Spring.

Veterinary

- The issue of stray horses continues to remain a challenge with the total number of strays seized to date at 358. The establishment of a pilot urban horse project in the city is under active consideration and discussions are taking place with An Garda Síochána in relation to measures to tackle the on-going horse stray horse problem.
- Dog Pound - The public opening hours at the dog pound located in the Civic Amenity Centre, Mungret have recently been extended. The pound is now open 10a.m - 2p.m. Mondays, Tuesdays, Thursdays, and Fridays and 3p.m. - 4.45p.m. on Wednesdays.
- Food Safety Official Controls continue to be delivered in abattoirs and other meat processing establishments under contract to the Food safety Authority of Ireland.

Waste Management

- A multi agency raid was recently carried out on an illegal waste storage site in Clondrinagh. Follow up enforcement action will be taken in respect of this site.
- Following action taken in the High Court by the Council, Greyhound Recovery and Recycling have completed the removal of circa 3,600 tonnes of waste from their site at the Galvone Industrial Estate.
- Cadence EnvironPower will give a presentation to Adare-Rathkeale Councillors on the proposed gasification project at Gortadroma landfill at their November meeting.

Recycling

- The Environment Department, won the Every Can Count's Award at the 2014 Repak Recycling More awards on Friday, 17th October 2014. The award was for "active involvement in having " Every Can Counts" bins located in a variety of locations throughout the area.

4. Festivals Tenders

Invitations to Tender were issued in October with the closing date for tenders 21 November, 2014. Three separate lots were advertised (large festivals, small/medium festivals, one-off events). It is anticipated that tenders will be evaluated before the end of November with a view to appointing a successful tenderer(s) in late December 2014. The contract will be for an initial 12 month period with a option to extend for a further two 12 month periods.

5. LCDC Update**Social Inclusion Unit**

- The Social Inclusion Officer is currently liaising with the Human Resources Department to incorporate comprehensive training on social inclusion, human rights and equality into LCCC's 2015 Training Procedure. A small number of awareness-raising events will take place in LCCC during November/December 2014 in advance of this more structured process for 2015.

Local Community Development Committee

- The fourth meeting of Limerick LCDC will take place on Tuesday, 11th November, 2014. To date significant background research has been undertaken to gather baseline data for the community element of the six year Local Community Development Plan which is due to be completed by mid-2015. This will complement work already undertaken by the economic development and forward planning unit as it prepares the economic portion of the plan. Both elements will be brought together in an overall plan which will require Council approval.
- Stage 2 of the procurement process for the Social Inclusion and Community Activation Programme, (SICAP): 2015 – 2017 has commenced. Stage 1 was undertaken by POBAL. Under Stage 2, Limerick LCDC is procuring for 3 lots, one each for the metropolitan area and the east and west of the county. The closing date for receipt of tenders is 19th December, 2014.
- The LCDC will be required to submit a single Expression of Interest in respect of the Rural Development Programme (LEADER) 2014 – 2020. Discussions are ongoing with the relevant local development companies with regard to same.

CHIEF EXECUTIVE'S REPORT

6. Establishment OF PPNs (Public Participation Networks)

- A Working Group has been set up to assist with the planning and establishment of the PPNs. It is made up of internal local authority staff and outside expertise in the establishment and operation of participative democratic structures. It is anticipated that registration will commence week beginning Monday 10th November and will run through until early January 2015. A series of information meetings has been set for November and early December to promote registration and raise awareness of the role of the PPN.

7. Limerick City of Culture

- Last quarter brochure issued with over 100 events from October to December 2014
- Visit of Minister for Arts, Heritage and the Gaeltacht Heather Humphries to Culture House
- Visit of the national theatre, the Abbey, to Limerick for production of Sive at Lime Tree Theatre
- Film Limerick have commissioned two new productions in October using Limerick as a film location

8. Arts

- Small refurbishment works have begun in the former Sarsfield Credit Union at 69 O'Connell Street to make the area available as a resource space for arts organisations and small festivals complementing the existing theatre facilities next door.
- Castleconnell Autumn Concert Series at All Saints' Church, Castleconnell - National and international musicians performing at the location with two concerts completed and one more in the current series.
- Lunchtime Concert Series at Granary Library - Two concerts completed, one more concert left in current series.
- Cappamore Library and Art Studios - Bursary announced for Cappamore Arts Studios. One Studio occupied, call out to occupy the other three. Bursary will cover half the cost of the monthly licence charge for each unit, usually €100, now €50.
- Community Voice singing - Drombanna singing group under the tutorage of Fran Garry, weekly singing workshops.
- County Limerick Youth Choir - Fifteen young people under the tutorage of Máire Keary Scanlon, weekly rehearsals held in County Hall.

- County Limerick Youth Theatre - Sixty young people under the tutorage of Fiona Quinn, weekly workshops in Honey Fitz theatre, Lough Gur.
- Integrated Dance programme - Eight groups of approximately twenty five Transition Year students from six different schools are taking part in this programme for the 2014/2015 academic year along with the residents from Rathfredagh Chehsire Home and the Brothers of Charity. Current schools participating are Coláiste Íde agus Joseph, Abbeyfeale and Coláiste na Trocáire, Rathkeale.
- Visual art, new training programme offered in partnership with City of Culture Visual Art Legacy and Commissioning.

9. Sports

- Tender being finalised in respect of procurement of operator for Rathbane Golf Course. It is expected that tender will be advertised shortly.

10. Fire

Keeping Communities Safe

- Each fire authority which maintains a fire brigade is required to prepare what is termed in the legislation a 'Fire and Emergency Operations Plan' which sets out how it meets its statutory duties. Limerick City and County Council fire service will undertake a review of its current services in light of the approaches and the targets of 'Keeping Communities Safe' and prepare an updated / revised statutory Section 26 Plan in 2014.

Adoption of the Section 26 Plan is a reserved function and the target for completion of this stage is in advance of the next round of Local Authority Corporate Plans due in December 2014.

The new Section 26 Plan will set out the individual service's overall approach to delivering the approaches and targets of this policy.

It will be complemented by Annual Service Development Plans which set priorities and targets for change on a year-by-year basis. Progress with the targets and objectives will be reported by individual authorities and collated by the National Directorate into annual reports.

The fire authority is currently preparing a report for the next meeting of the External Validation Group. This will be followed by the preparation of a draft Section 26 Plan shortly thereafter.

CHIEF EXECUTIVE'S REPORT

Economic Development and Planning

1. Economic Development

Progress continues on the delivery of the Limerick 2030 key strategic sites and with the City's development plans around a number of projects. The Council has secured 'in principle' agreement on the re-location of the Revenue Commissioners to the Opera Site which once confirmed by Government will allow the 'Expressions of Interest' tender to be published on eTenders/EUOJ.

Cleeves: The Cleeves' site working paper and due diligence report is in preparation.

Hanging Gardens: The purchase, project planning and completion of the 'Hanging Gardens' site is underway.

Arthur's Quay: The Arthur's Quay CPO is in preparation. Discussions with Government Departments are ongoing.

Footbridge: The Shannon River Footbridge Project has secured €6m in funding from Government(2015/16).

Colbert Station: Project planning continues in partnership with Irish Rail.

UL to City Centre Public Transport Link: ARUP's report completed and ready for circulation.

Property: Property interest Register(PIR) initial consultations with directorates commencing. Survey of City/Town Centre vacancy rates and footfall levels underway.

2. Limerick Marketing

Limerick Marketing is working in partnership with the Limerick City Business Association to promote Limerick's 2014 Christmas offer. Key campaign messages include Limerick's magical and compelling calendar of events and the excellent retail and hospitality mix on offer over the festive season.

3. Forward Planning

- Adoption of the part 8 for Mungret Neighbourhood Park.
- Preparation of the Patrickswell & Askeaton Local Area plan underway.
- Preparation of Strategic Environmental Assessment (SEA) for proposed variation to Limerick City Development Plan for incorporation of the 2030

Economic Plan.

- Closing date for the sales for Mungret College and Lands is the 7th November and contracts are being drafted for disposal of sites to the Department of Education.

4. Development Management

- CPL Fuels - PA 14/603 - alterations and extension to the existing industrial building and erection of new buildings (EIS submitted) - Granted.
- Vistakon - PA 14/1015 - construction of a new utility block - Granted.

5. Roads

Killarney Pole to Barnagh Phase 2 Project:

- Engineering Consultants have been appointed for the construction phase and a recommendation to appoint the Main Works Contractor is currently with the National Roads Authority for approval.
- Tenders have been received and are currently being assessed for the Dromkeen Traffic Calming Scheme
- Tenders for the Munster Bridges contract 2 have been received and tenders for Munster Bridges Contract 3 are due on 5th November.

Limerick Smarter Travel

- Works are substantially complete on Route 3, University of Limerick to Rhebogue/Parkway.

The following schemes are on display at Part 8 planning stage:

- Rhebogue Neighbourhood Greenway;
- Route 4, Cyclelanes, junction improvements (at Ballysimon, Castletroy, Newtown);
- Route 2, Park Road and Park Bridge Improvements.
- A request for further information has been received from An Bord Pleanála in respect of Route 2: University of Limerick to Canal/Guinness Bridge,
- The National Transport Authority has approved funding for the preparation, by the Limerick Smarter Travel team, of a Limerick Metropolitan Cycle Network Plan.
- Construction work is due to commence 2nd week in November on the Raheen / Patrickswell cycle lanes project.
- Consultants have been appointed to examine potential cycle routes connecting the City centre with both Limerick Institute of Technology and Mary Immaculate College.
- The Limerick Smarter Travel team are continuing work

CHIEF EXECUTIVE'S REPORT

in Community Engagement and Workplace, Campus and Schools Travel Planning.

- The updated Limerick Smarter Travel website is available at www.limericksmartertravel.ie.
- A scheme of incentivised parking for the Christmas period has been launched for Limerick City and the towns of Newcastlewest, Abbeyfeale and Kilmallock. Details at www.limerick.ie/Christmas
- A Winter maintenance plan has also been developed

6. ICT Update**Electronic Council Meetings & Representations**

- All Members have been now issued with iPads with initial training being carried out. A process has been implemented to upload all meeting documentation to our Alfresco Extranet, this has facilitated the introduction of electronic meetings.

Web Governance

- A WEB Governance Group for Limerick.ie was established at the September meeting and the first meeting of the group was held 16th October. Agreed to process WEB feedback through Customer Services and Sugar CRM, timelines to be agreed. Sub-Group to be established to progress development of online services, decision taken to commence with Environment.

Fibre Connectivity

- Fibre in place to 8, Patrick Street, The Granary, and the Art Gallery, Pery Square. Link Merchants Quay to Dooradoyle well advanced, with completion planned for late December.

Systems Merger

- All major systems merged. There are still in the region of 50% of the systems to be merged, this will be facilitated by additional resources in the Business Systems area.

Organisational Redevelopment**1. Customer Services**

- From Monday, 3rd November, all general Environment queries received via the counter, e mail, telephone or twitter in Dooradoyle, Merchant's Quay, Kilmallock, Newcastle West and Rathkeale are now officially being handled by Customer Services.
- Work has been ongoing for some time between Customer Services and the Environment Department with a view to integrating all frontline Environment Services into Customer Services in the 5 locations of Dooradoyle, Merchants Quay, Kilmallock, Newcastle West, and Rathkeale.
- Sugar CRM is the Customer Relationship Management (CRM) system that is being used by Customer Services and Environment to manage all service requests. This system is currently being used for tracking all political representations received by Customer Services. On a phased basis, the Sugar CRM will subsequently be used for tracking all Council interactions with citizens and organisations.
- We are piloting this process with Environment. Service Requests and queries received are being answered in line with 'first point of contact resolution' where possible.
- Also, a detailed document called an Operation Level Agreement has been signed between Customer Services and Environment. This document outlines in detail the responsibilities of each area around the delivery of the Service.
- There will be a further phase of the Environment integration with Customer Services coming shortly where Customer Services will be carrying out front line services to a greater extent on behalf of Environment. Following the integration of Environment, Housing Frontline Services will be integrated into Customer Services and work has commenced already on this.

2. Shortlisted for Innovation Award

Limerick City and County Council has been shortlisted for a Local Authority Innovation Award by the Chambers Ireland's Excellence in Local Government Awards 2014 for the following Project:

Project Name: Creating a new agile public governance model through the merger of Limerick City Council and Limerick County Council.

CHIEF EXECUTIVE'S REPORT

Project Description: Limerick City and County Council is creating a new agile public governance model to provide opportunity for public sector innovation, through the merger of Limerick City Council and Limerick County Council. Limerick City Council and Limerick County Council are not just merging but creating a new organisation for local government using an innovative change portfolio that that will change the design and delivery of local government services for the future.

Absenteeism

Absenteeism has dropped from 4.26% at the end of July to 4.15% at the end of October.

Financial Matters**1. Revised Provisional Local Property Tax allocation to Limerick City & County Council in 2015**

Circular Fin 17/2014 was issued re Provisional Local Property Tax Allocations 2015 and revised Variation Notification. It stated that as Limerick City & County Council has notified the Minister of the passing of a resolution to vary the basic rate of local property tax downwards by 3% for 2015, this will have the effect of reducing the amount of the provisional 2015 LPT allocation to €14,139,276 (a reduction of € 485,883 from the original allocation of € 14,625,159 pre-variation).

2. Budget 2015

Further to the Local Government Act 2001, as amended, the Local Government (Financial and Audit Procedures) Regulations 2014 and Circular Fin 05/2014, direction by the Minister for the Environment, Community and Local Government to the 2015 Budget meeting and the prescribed periods that apply for the holding of 2015 Budget meetings are as follows:

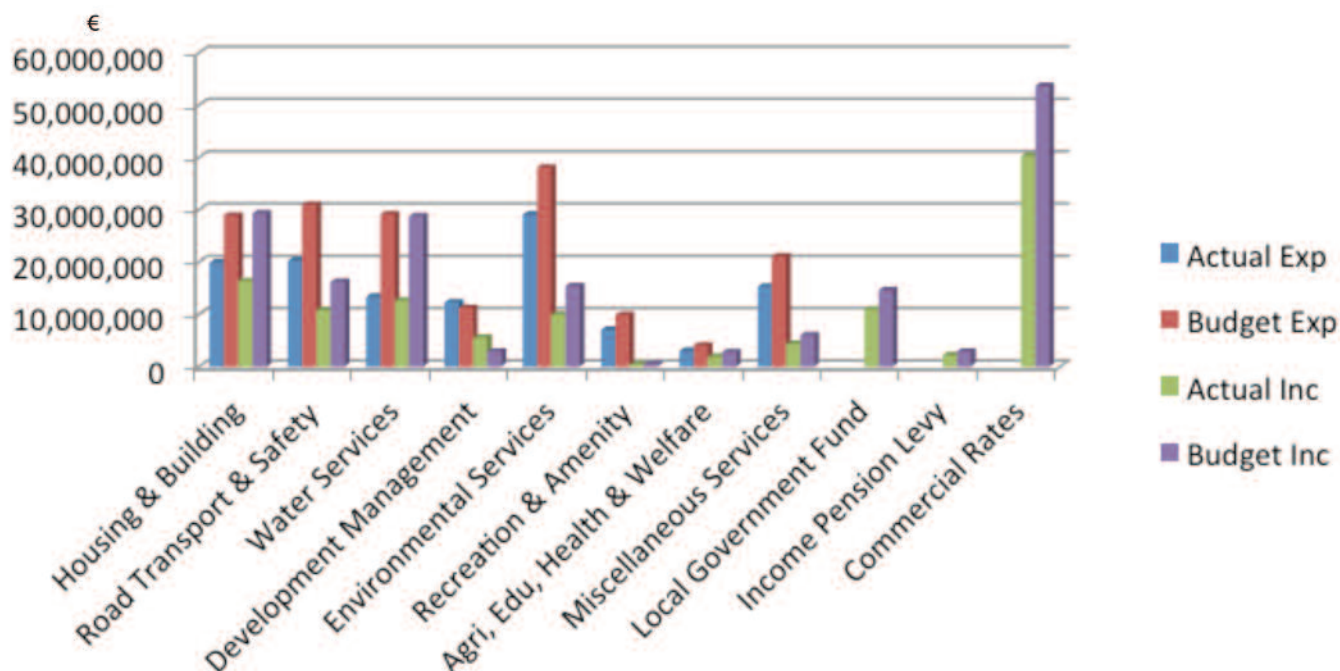
Limerick City and County Council: 1 January 2015 to 24 January 2015 and all other local authorities and joint bodies: 1 November 2014 to 24 November 2014.

CHIEF EXECUTIVE'S REPORT

Limerick City and County Council Draft Income & Expenditure Account for period end 30/09/2014

Division	Expenditure			% Spent	Income		% Spent	Variance	
	Actual	Budget			Actual	Budget		Actual	Budget
Housing & Building	€19,918,776	€28,851,857	69%		€16,375,103	€29,277,184	56%	€3,543,673	-€425,327
Road Transport & Safety	€20,276,475	€30,947,152	66%		€10,820,021	€16,221,554	67%	€9,456,454	€14,725,598
Water Services	€13,367,861	€29,141,154	46%		€12,599,849	€28,769,087	44%	€768,012	€372,067
Development Management	€12,291,272	€11,209,616	110%		€5,557,365	€2,909,041	191%	€6,733,907	€8,300,575
Environmental Services	€29,083,466	€38,047,049	76%		€9,959,965	€15,406,295	65%	€19,123,501	€22,640,754
Recreation & Amenity	€7,030,469	€9,882,158	71%		€425,729	€515,123	83%	€6,604,740	€9,367,035
Agri, Edu, Health & Welfare	€3,020,038	€4,045,592	75%		€1,890,468	€2,815,637	67%	€1,129,570	€1,229,955
Miscellaneous Services	€15,298,830	€21,031,610	73%		€4,348,903	€6,041,186	72%	€10,949,927	€14,990,424
Local Government Fund					€10,957,500	€14,610,000	75%	-€10,957,500	-€14,610,000
Income Pension Levy					€2,166,854	€2,914,231	74%	-€2,166,854	-€2,914,231
Commercial Rates					€40,257,638	€53,676,850	75%	-€40,257,638	-€53,676,850
Total Expenditure /Income	€120,287,186	€173,156,188	69%		€115,359,395	€173,156,188	67%	€4,927,792	€0

CHIEF EXECUTIVE'S REPORT



The draft Income & Expenditure Accounts for the nine months up to Sept 2014 showed a deficit of €4.928M. This was due mainly to unanticipated expenditure with regard to flood and storm damage in the first quarter of the year. We are continuing to pursue the Department on the issue of flood funds as promised earlier in the year. The Council is also contributing towards Limerick's successful year as National City of Culture. In addition, due to economic circumstances, a number of income streams are falling short of budget and this is evident in divisions such as Housing and Environment. We are continually working to ensure that we maintain a balanced outturn by year end.

Collection Figures

Collection Rates 2014	Opening Balance 1 Jan €	Accruals €	To Collect €	Receipts €	Arrears €	%
As at 31 October	25,505,113	50,641,894	76,147,007	38,359,975	37,787,032	50

Collection Loans 2014	Opening Balance 1 Jan €	Accruals €	To Collect €	Receipts €	Arrears €	%
As at 31 October	598,023	1,331,343	1,929,366	1,451,967	477,399	75